

Data Path : Z:\pestpcbsrv\HPCHEM1\ECD_D\Data\PD062223\
 Data File : PD076009.D
 Signal(s) : Signal #1: ECD1A.ch Signal #2: ECD2B.ch
 Acq On : 21 Jun 2023 20:35
 Operator : AR\AJ
 Sample : PB153470BS
 Misc :
 ALS Vial : 35 Sample Multiplier: 1

Integration File signal 1: autoint1.e
 Integration File signal 2: autoint2.e
 Quant Time: Jun 21 22:29:00 2023
 Quant Method : Z:\pestpcbsrv\HPCHEM1\ECD_D\Method\PD062223CLP.M
 Quant Title : GC Extractables
 QLast Update : Wed Jun 21 16:21:29 2023
 Response via : Initial Calibration
 Integrator: ChemStation

Volume Inj. : 1 µl
 Signal #1 Phase : ZB-MR2 Signal #2 Phase: ZB-MR2
 Signal #1 Info : 30M x 0.32mm x0.5 Signal #2 Info : 30M x 0.32mm x 0.25µm

	Compound	RT#1	RT#2	Resp#1	Resp#2	ng/ml	ng/ml

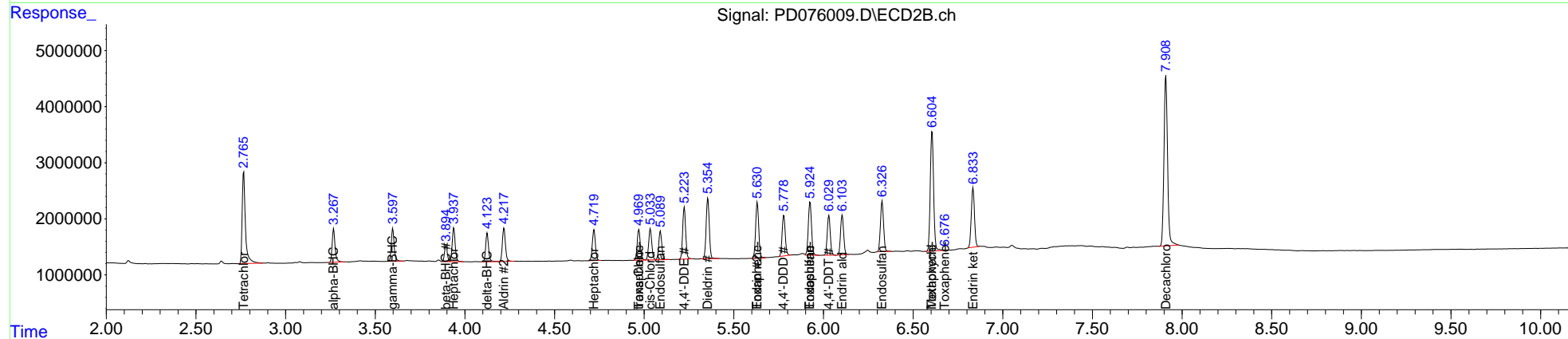
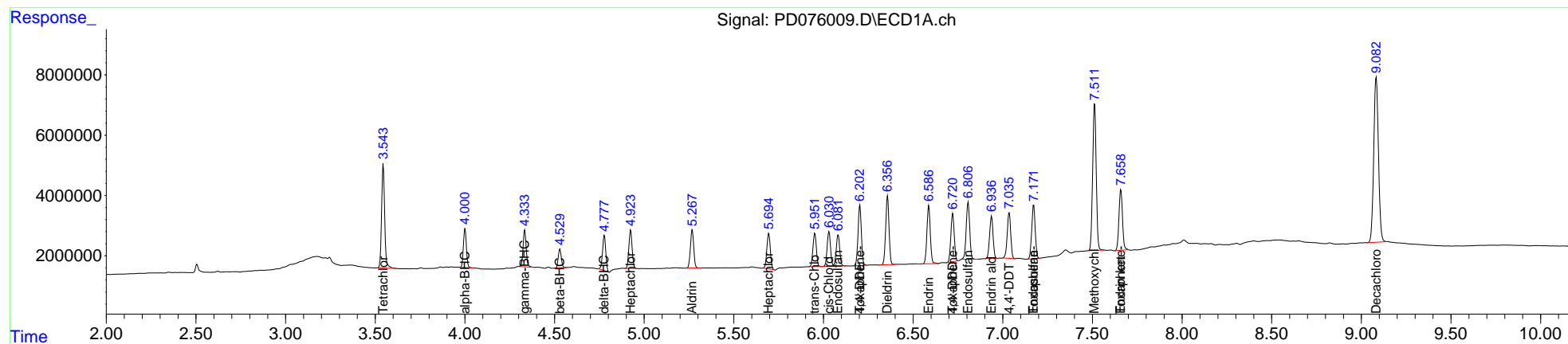
System Monitoring Compounds							
1)	SA Tetrachlo...	3.545	2.766	40882329	20490572	19.501	19.149
27)	SA Decachlor...	9.083	7.910	100.4E6	42431460	41.758	40.499
Target Compounds							
2)	A alpha-BHC	4.001	3.268	14976533	6774701	4.344	4.389
3)	MA gamma-BHC...	4.334	3.598	14604522	6539839	4.521	4.497
4)	MA Heptachlor	4.925	3.938	16246670	6960305	4.822	4.689
5)	MB Aldrin	5.268	4.218	16389383	7070258	5.048	4.889
6)	B beta-BHC	4.530	3.895	7435733	3130118	5.118	4.586
7)	B delta-BHC	4.778	4.125	14332306	5689564	4.853	3.908
8)	B Heptachlo...	5.695	4.720	15719247	6514471	5.348	4.811
9)	A Endosulfan I	6.082	5.091	13920076	6049235	5.048	4.916
10)	B trans-Chl...	5.952	4.971	14413687	6557894	4.936	4.967
11)	B cis-Chlor...	6.031	5.034	15019935	6740297	4.956	4.909
12)	B 4,4'-DDE	6.203	5.224	25768802	10794278	9.254	9.368
13)	MA Dieldrin	6.358	5.355	29195108	13207852	9.476	9.474
14)	MA Endrin	6.587	5.631	25045917	12113822	9.606	9.798
15)	B Endosulfa...	6.807	5.926	25549486	11791977	9.979	10.000
16)	A 4,4'-DDD	6.721	5.779	20721331	8846747	9.605	9.662
17)	MA 4,4'-DDT	7.036	6.030	20501190	8438369	9.357	9.106
18)	B Endrin al...	6.938	6.105	18845031	8503684	9.847	9.830
19)	B Endosulfa...	7.173	6.327	23981959	10942901	9.944	9.966
20)	A Methoxychlor	7.513	6.606	67002539	27722166	50.733	51.438
21)	B Endrin ke...	7.659	6.834	27652422	12959949	10.226	10.356
22)	Toxaphene-1	6.203f	4.971	25768802	6557894	1207.459	920.959
23)	Toxaphene-2	0.000	5.631f	0	12113822	N.D.	1606.924
24)	Toxaphene-3	6.721f	5.926f	20721331	11791977	1071.849	1320.392
25)	Toxaphene-4	7.173	6.606	23981959	27722166	409.329	1157.776 #
26)	Toxaphene-5	7.659f	6.678f	27652422	94670	655.516	2.660 #

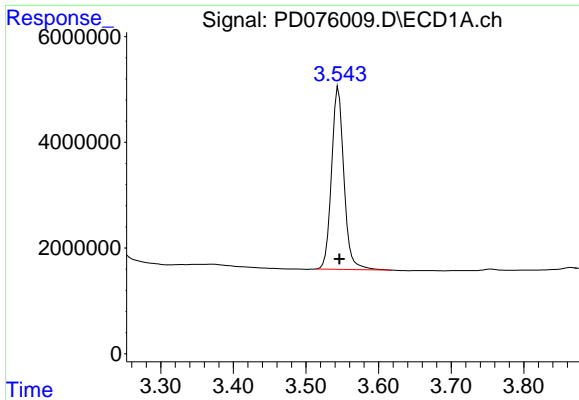
(f)=RT Delta > 1/2 Window (#)=Amounts differ by > 25% (m)=manual int.

Data Path : Z:\pestpcbsrv\HPCHEM1\ECD_D\Data\PD062223\
 Data File : PD076009.D
 Signal(s) : Signal #1: ECD1A.ch Signal #2: ECD2B.ch
 Acq On : 21 Jun 2023 20:35
 Operator : AR\AJ
 Sample : PB153470BS
 Misc :
 ALS Vial : 35 Sample Multiplier: 1

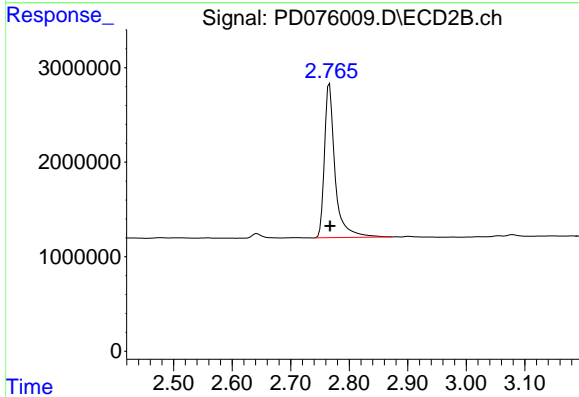
Integration File signal 1: autoint1.e
 Integration File signal 2: autoint2.e
 Quant Time: Jun 21 22:29:00 2023
 Quant Method : Z:\pestpcbsrv\HPCHEM1\ECD_D\Method\PD062223CLP.M
 Quant Title : GC Extractables
 QLast Update : Wed Jun 21 16:21:29 2023
 Response via : Initial Calibration
 Integrator: ChemStation

Volume Inj. : 1 µl
 Signal #1 Phase : ZB-MR1 Signal #2 Phase: ZB-MR2
 Signal #1 Info : 30M x 0.32mm x0.5 Signal #2 Info : 30M x 0.32mm x 0.25µm

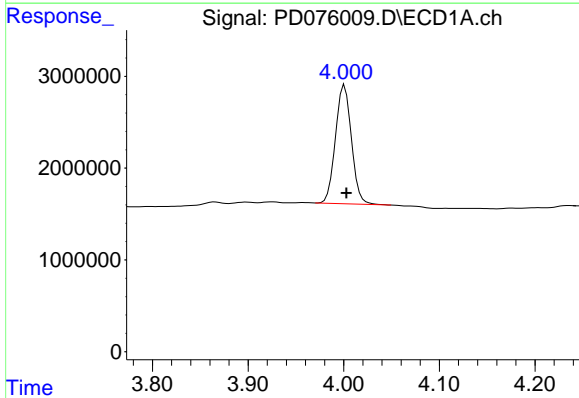




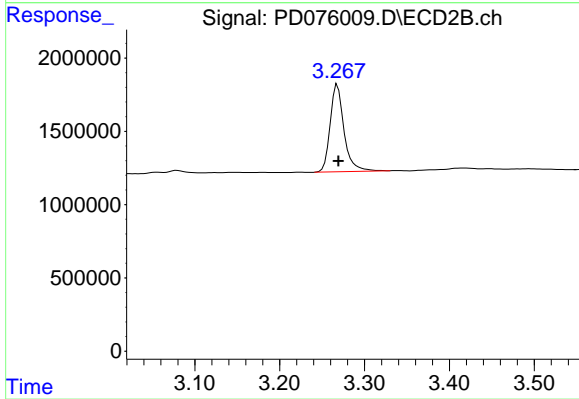
#1 Tetrachloro-m-xylene
R.T.: 3.545 min
Delta R.T.: -0.001 min
Response: 40882329
Conc: 19.50 ng/ml



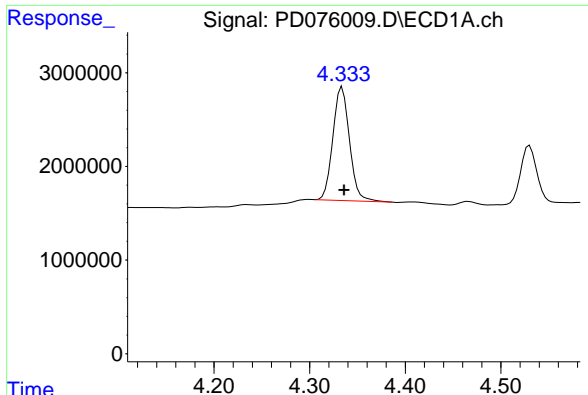
#1 Tetrachloro-m-xylene
R.T.: 2.766 min
Delta R.T.: 0.000 min
Response: 20490572
Conc: 19.15 ng/ml



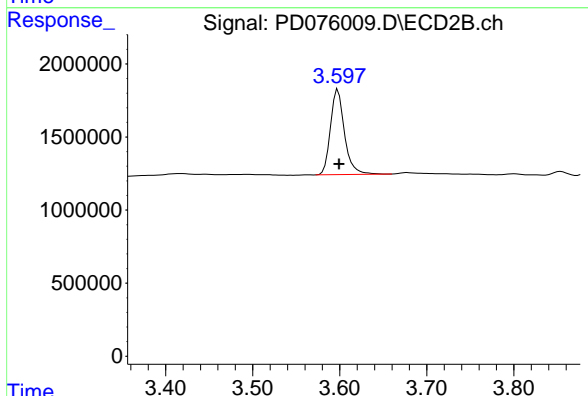
#2 alpha-BHC
R.T.: 4.001 min
Delta R.T.: -0.002 min
Response: 14976533
Conc: 4.34 ng/ml



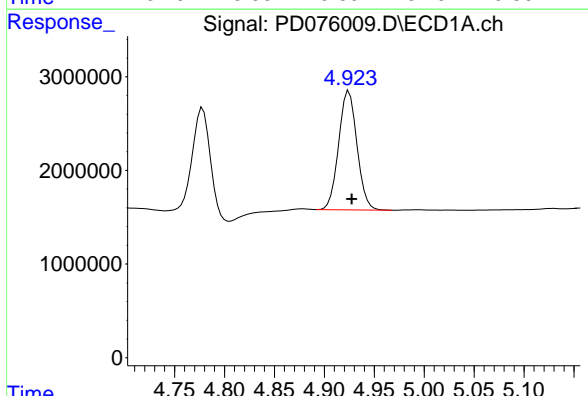
#2 alpha-BHC
R.T.: 3.268 min
Delta R.T.: 0.000 min
Response: 6774701
Conc: 4.39 ng/ml



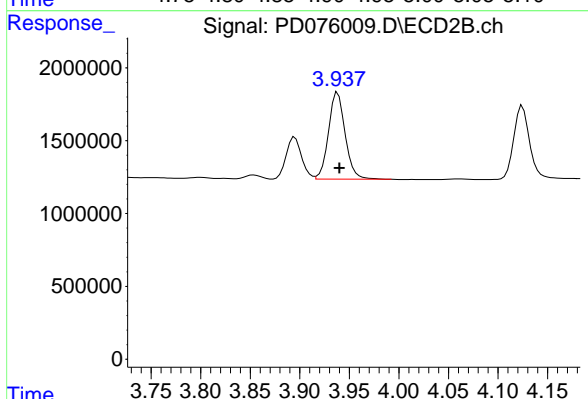
#3 gamma-BHC (Lindane)
 R.T.: 4.334 min
 Delta R.T.: -0.002 min
 Response: 14604522
 Conc: 4.52 ng/ml



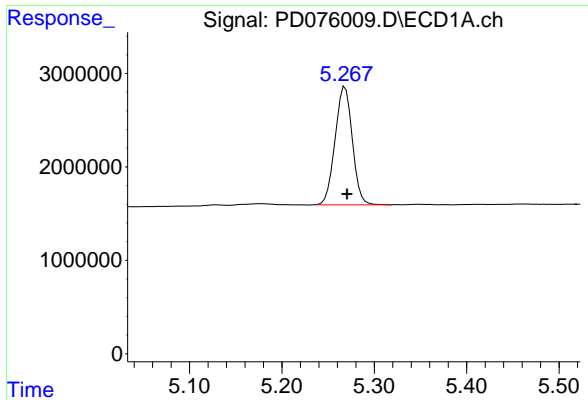
#3 gamma-BHC (Lindane)
 R.T.: 3.598 min
 Delta R.T.: -0.001 min
 Response: 6539839
 Conc: 4.50 ng/ml



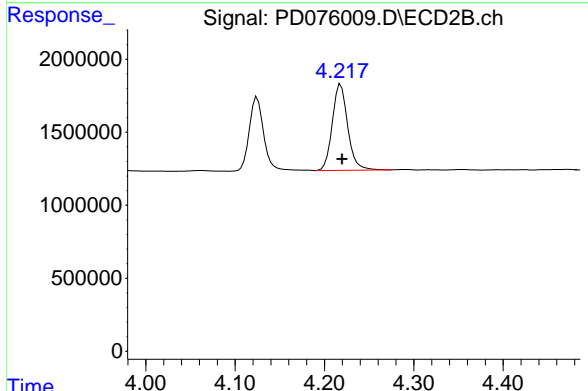
#4 Heptachlor
 R.T.: 4.925 min
 Delta R.T.: -0.003 min
 Response: 16246670
 Conc: 4.82 ng/ml



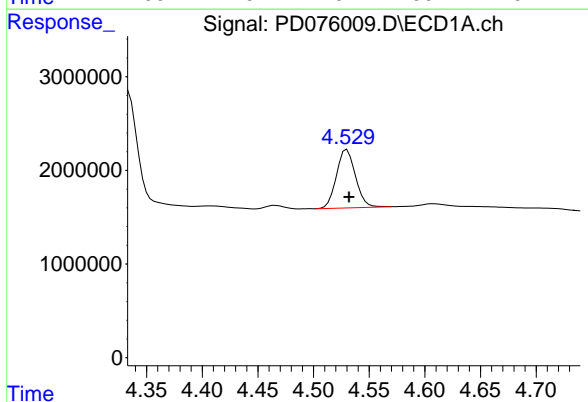
#4 Heptachlor
 R.T.: 3.938 min
 Delta R.T.: -0.002 min
 Response: 6960305
 Conc: 4.69 ng/ml



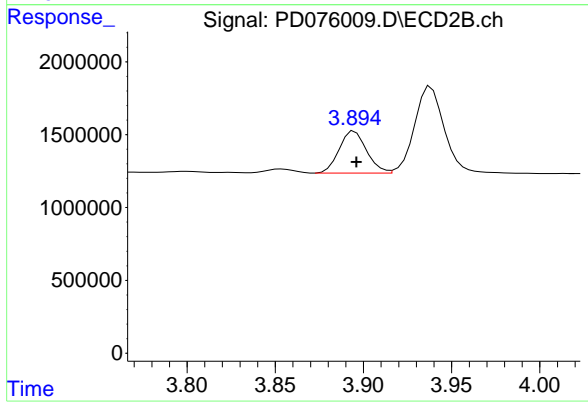
#5 Aldrin
 R.T.: 5.268 min
 Delta R.T.: -0.002 min
 Response: 16389383
 Conc: 5.05 ng/ml



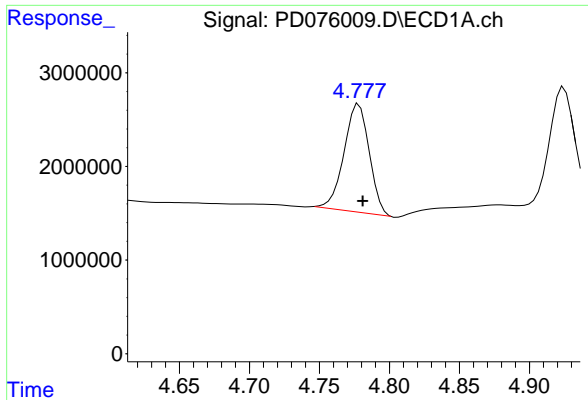
#5 Aldrin
 R.T.: 4.218 min
 Delta R.T.: -0.001 min
 Response: 7070258
 Conc: 4.89 ng/ml



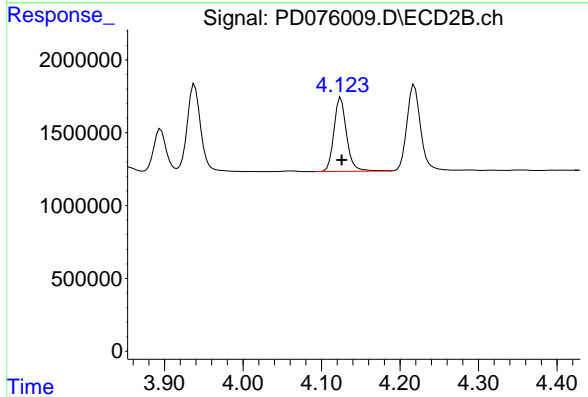
#6 beta-BHC
 R.T.: 4.530 min
 Delta R.T.: -0.002 min
 Response: 7435733
 Conc: 5.12 ng/ml



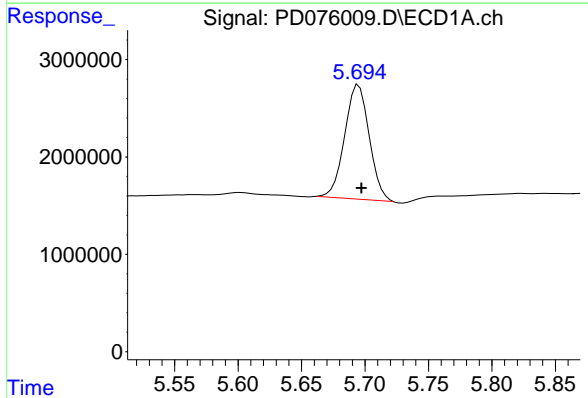
#6 beta-BHC
 R.T.: 3.895 min
 Delta R.T.: 0.000 min
 Response: 3130118
 Conc: 4.59 ng/ml



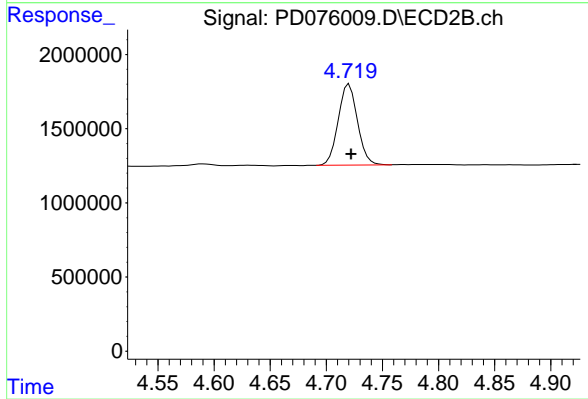
#7 delta-BHC
R.T.: 4.778 min
Delta R.T.: -0.003 min
Response: 14332306
Conc: 4.85 ng/ml



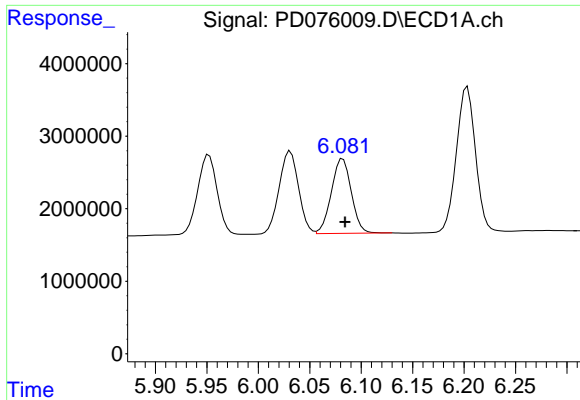
#7 delta-BHC
R.T.: 4.125 min
Delta R.T.: -0.001 min
Response: 5689564
Conc: 3.91 ng/ml



#8 Heptachlor epoxide
R.T.: 5.695 min
Delta R.T.: -0.002 min
Response: 15719247
Conc: 5.35 ng/ml

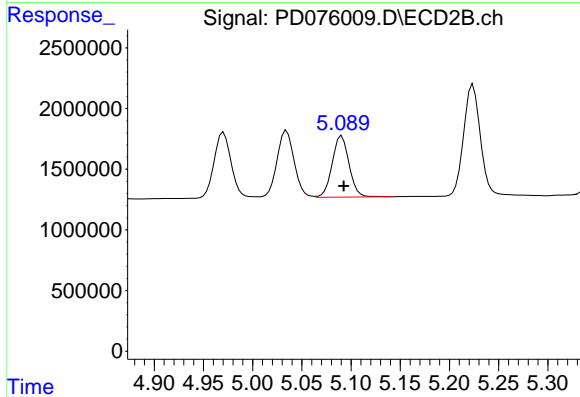


#8 Heptachlor epoxide
R.T.: 4.720 min
Delta R.T.: -0.002 min
Response: 6514471
Conc: 4.81 ng/ml



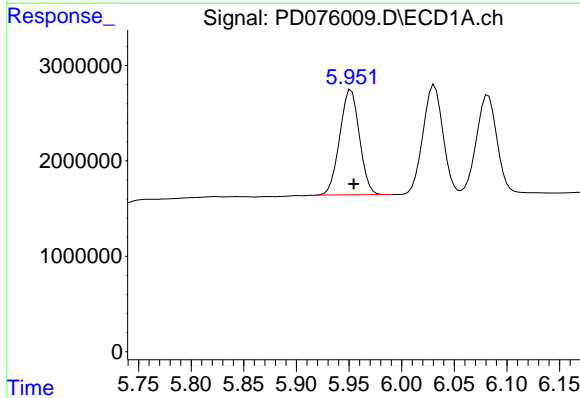
#9 Endosulfan I

R.T.: 6.082 min
 Delta R.T.: -0.002 min
 Response: 13920076
 Conc: 5.05 ng/ml



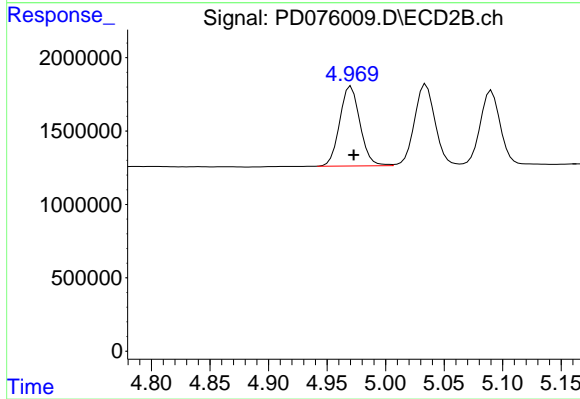
#9 Endosulfan I

R.T.: 5.091 min
 Delta R.T.: -0.002 min
 Response: 6049235
 Conc: 4.92 ng/ml



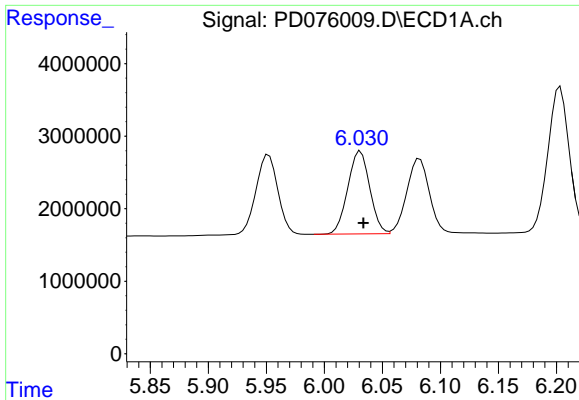
#10 trans-Chlordane

R.T.: 5.952 min
 Delta R.T.: -0.002 min
 Response: 14413687
 Conc: 4.94 ng/ml



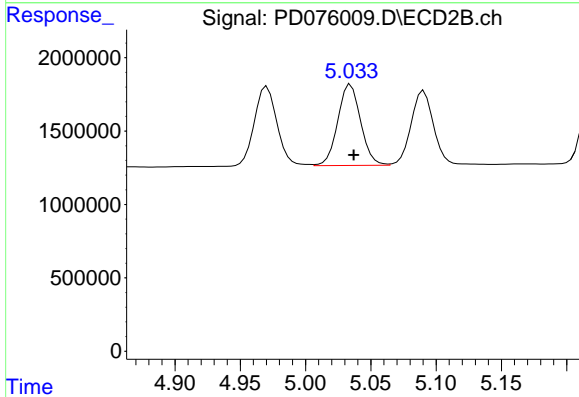
#10 trans-Chlordane

R.T.: 4.971 min
 Delta R.T.: -0.002 min
 Response: 6557894
 Conc: 4.97 ng/ml



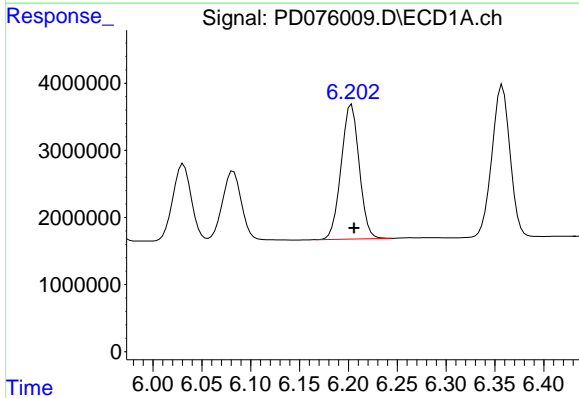
#11 cis-Chlordane

R.T.: 6.031 min
Delta R.T.: -0.003 min
Response: 15019935
Conc: 4.96 ng/ml



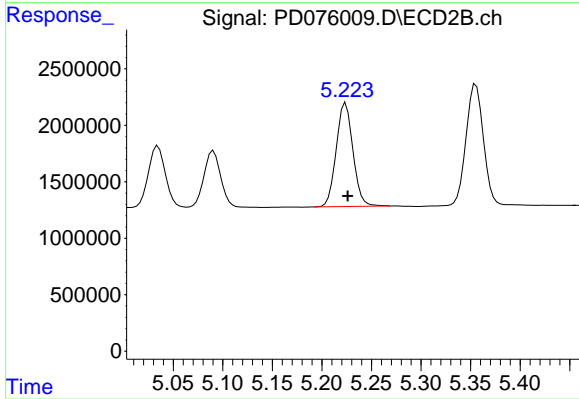
#11 cis-Chlordane

R.T.: 5.034 min
Delta R.T.: -0.002 min
Response: 6740297
Conc: 4.91 ng/ml



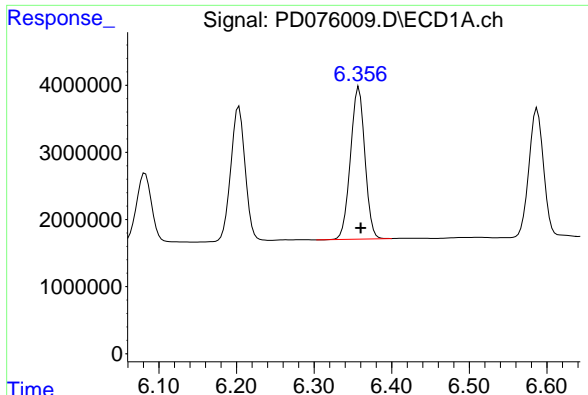
#12 4,4'-DDE

R.T.: 6.203 min
Delta R.T.: -0.003 min
Response: 25768802
Conc: 9.25 ng/ml



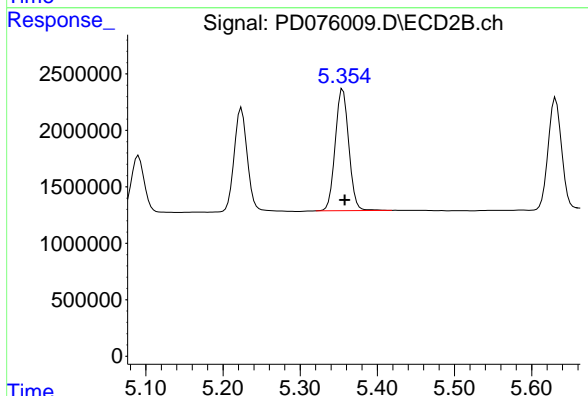
#12 4,4'-DDE

R.T.: 5.224 min
Delta R.T.: -0.002 min
Response: 10794278
Conc: 9.37 ng/ml



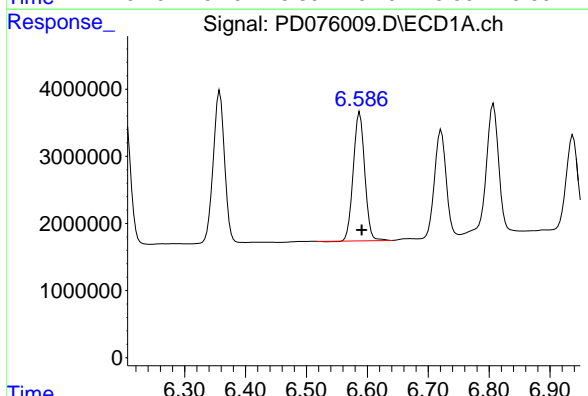
#13 Dieldrin

R.T.: 6.358 min
Delta R.T.: -0.002 min
Response: 29195108
Conc: 9.48 ng/ml



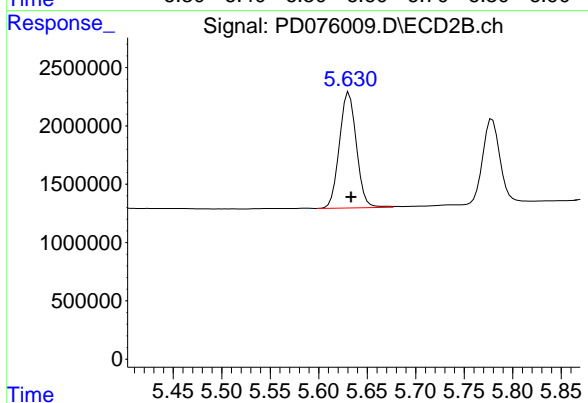
#13 Dieldrin

R.T.: 5.355 min
Delta R.T.: -0.002 min
Response: 13207852
Conc: 9.47 ng/ml



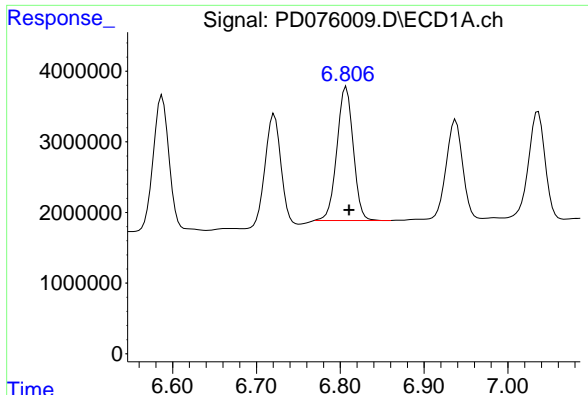
#14 Endrin

R.T.: 6.587 min
Delta R.T.: -0.003 min
Response: 25045917
Conc: 9.61 ng/ml



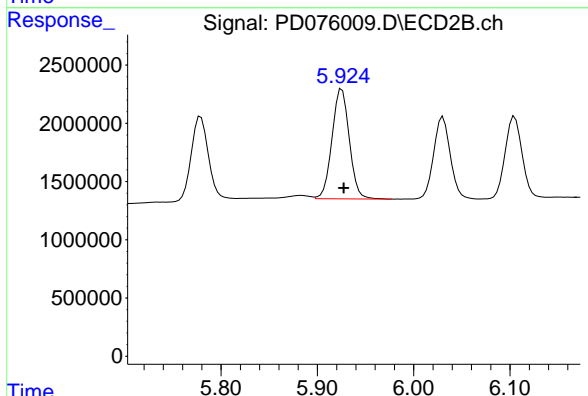
#14 Endrin

R.T.: 5.631 min
Delta R.T.: -0.002 min
Response: 12113822
Conc: 9.80 ng/ml



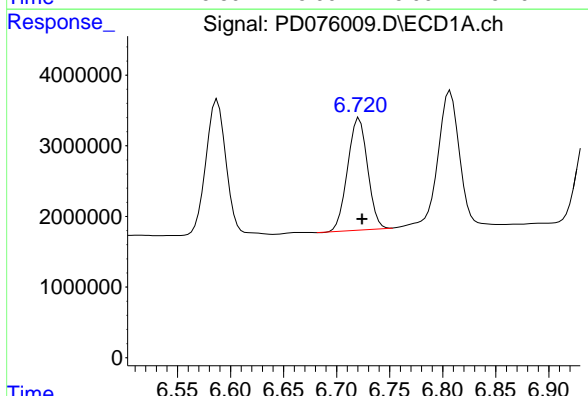
#15 Endosulfan II

R.T.: 6.807 min
 Delta R.T.: -0.003 min
 Response: 25549486
 Conc: 9.98 ng/ml



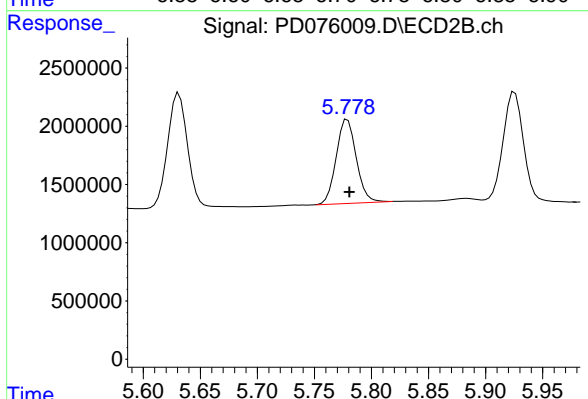
#15 Endosulfan II

R.T.: 5.926 min
 Delta R.T.: -0.002 min
 Response: 11791977
 Conc: 10.00 ng/ml



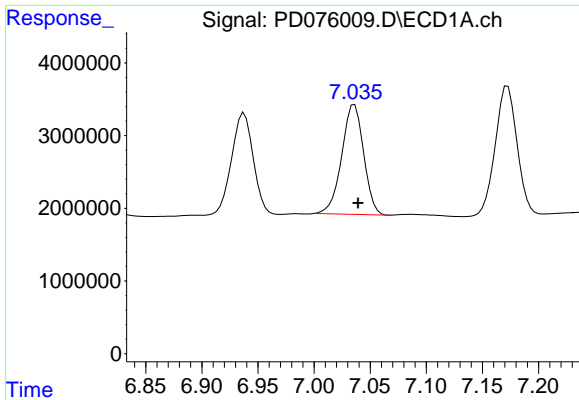
#16 4,4'-DDD

R.T.: 6.721 min
 Delta R.T.: -0.003 min
 Response: 20721331
 Conc: 9.60 ng/ml

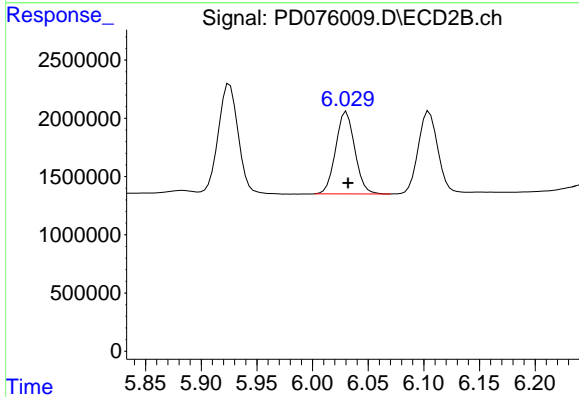


#16 4,4'-DDD

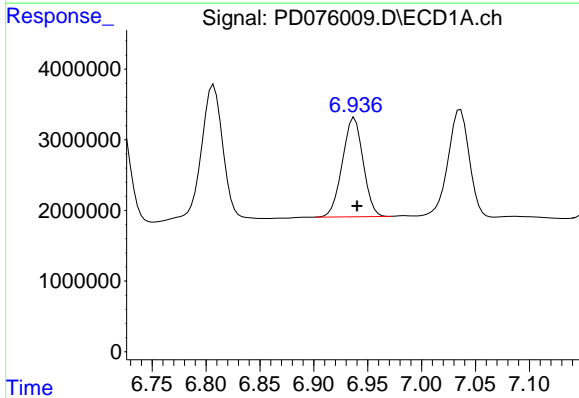
R.T.: 5.779 min
 Delta R.T.: -0.002 min
 Response: 8846747
 Conc: 9.66 ng/ml



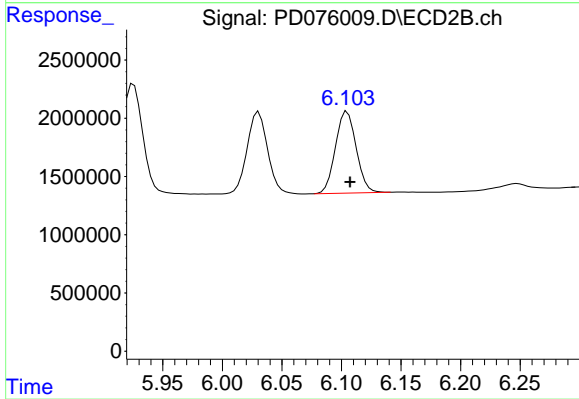
#17 4,4'-DDT
 R.T.: 7.036 min
 Delta R.T.: -0.003 min
 Response: 20501190
 Conc: 9.36 ng/ml



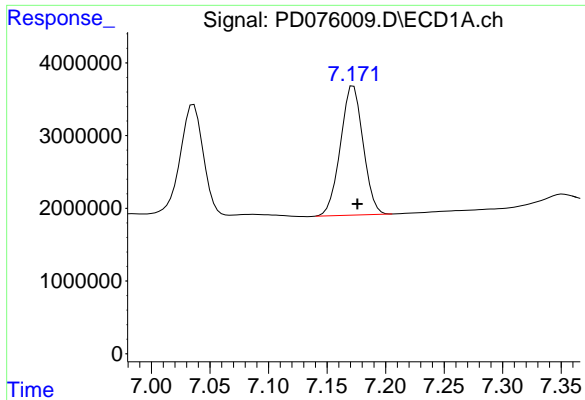
#17 4,4'-DDT
 R.T.: 6.030 min
 Delta R.T.: -0.002 min
 Response: 8438369
 Conc: 9.11 ng/ml



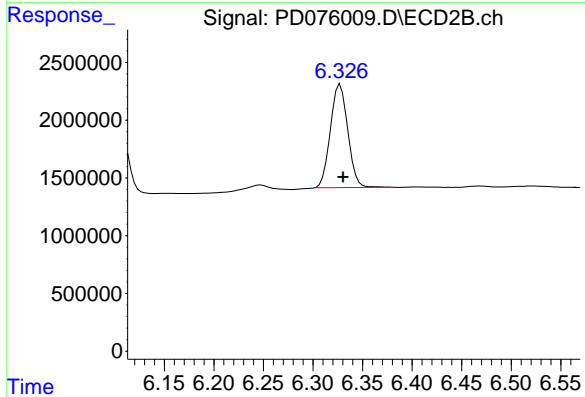
#18 Endrin aldehyde
 R.T.: 6.938 min
 Delta R.T.: -0.002 min
 Response: 18845031
 Conc: 9.85 ng/ml



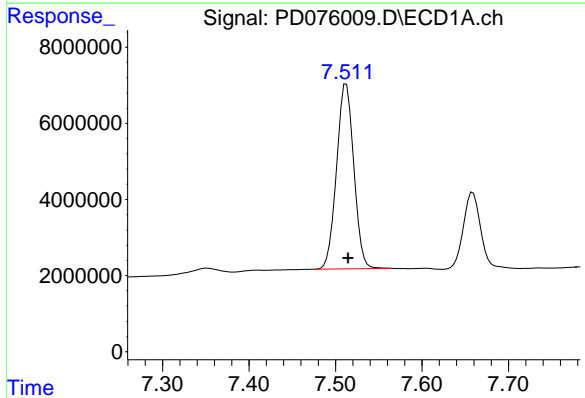
#18 Endrin aldehyde
 R.T.: 6.105 min
 Delta R.T.: -0.002 min
 Response: 8503684
 Conc: 9.83 ng/ml



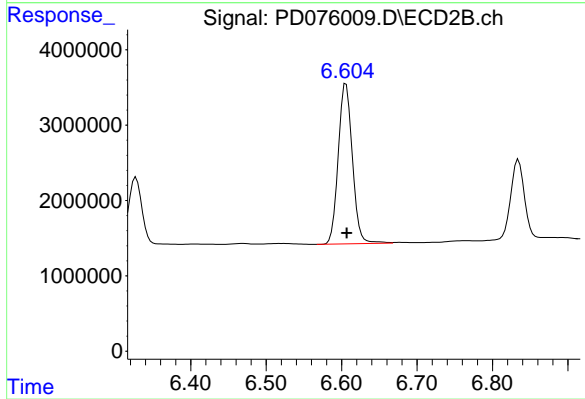
#19 Endosulfan Sulfate
 R.T.: 7.173 min
 Delta R.T.: -0.003 min
 Response: 23981959
 Conc: 9.94 ng/ml



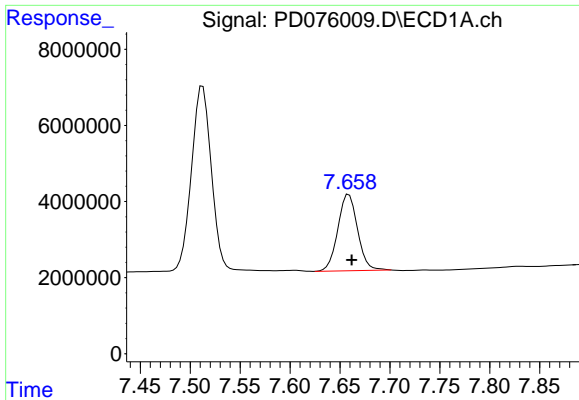
#19 Endosulfan Sulfate
 R.T.: 6.327 min
 Delta R.T.: -0.003 min
 Response: 10942901
 Conc: 9.97 ng/ml



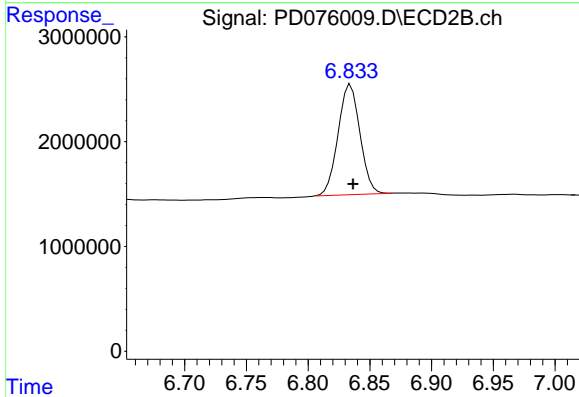
#20 Methoxychlor
 R.T.: 7.513 min
 Delta R.T.: -0.002 min
 Response: 67002539
 Conc: 50.73 ng/ml



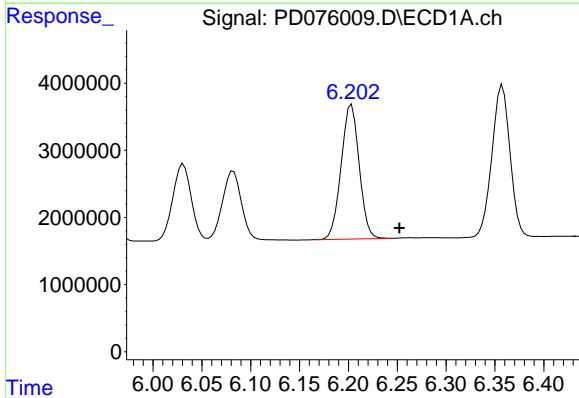
#20 Methoxychlor
 R.T.: 6.606 min
 Delta R.T.: 0.000 min
 Response: 27722166
 Conc: 51.44 ng/ml



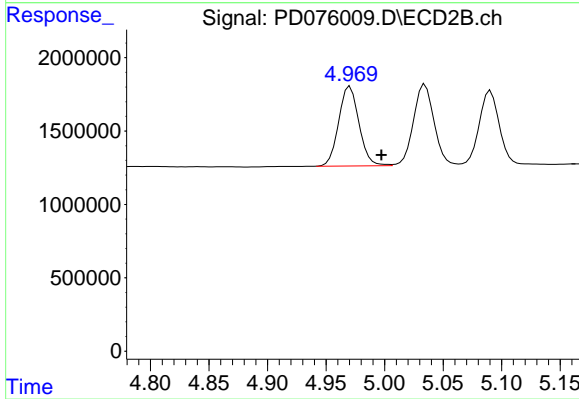
#21 Endrin ketone
 R.T.: 7.659 min
 Delta R.T.: -0.003 min
 Response: 27652422
 Conc: 10.23 ng/ml



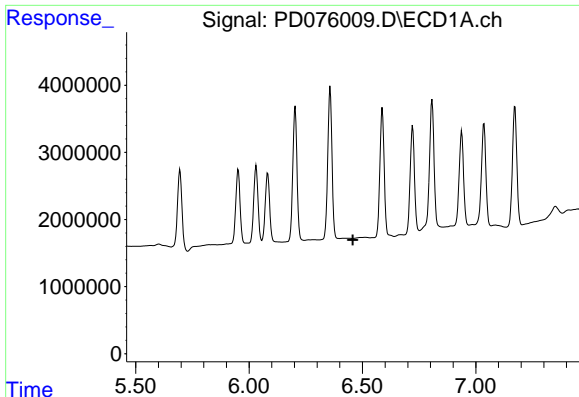
#21 Endrin ketone
 R.T.: 6.834 min
 Delta R.T.: -0.002 min
 Response: 12959949
 Conc: 10.36 ng/ml



#22 Toxaphene-1
 R.T.: 6.203 min
 Delta R.T.: -0.049 min
 Response: 25768802
 Conc: 1207.46 ng/ml

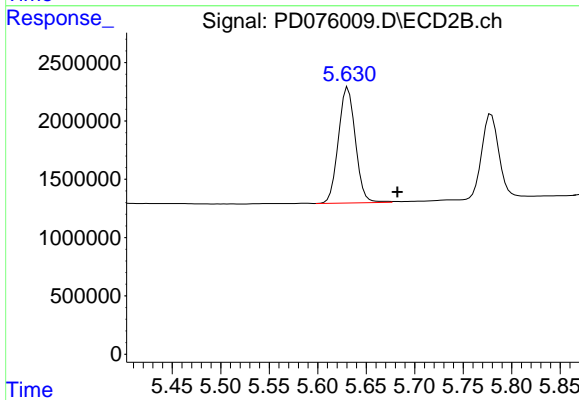


#22 Toxaphene-1
 R.T.: 4.971 min
 Delta R.T.: -0.027 min
 Response: 6557894
 Conc: 920.96 ng/ml



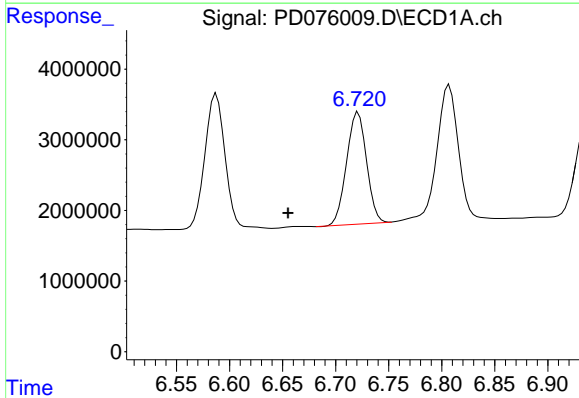
#23 Toxaphene-2

R.T.: 0.000 min
 Exp R.T. : 6.457 min
 Response: 0
 Conc: N.D.



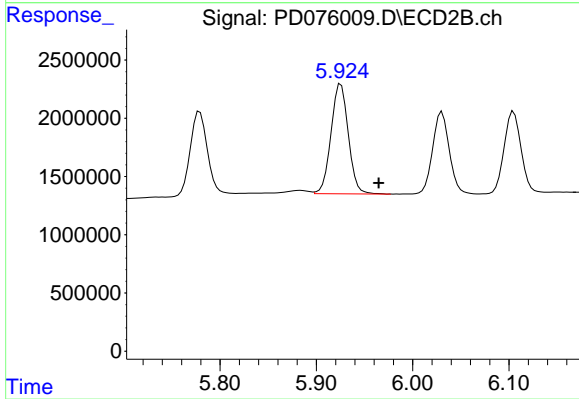
#23 Toxaphene-2

R.T.: 5.631 min
 Delta R.T.: -0.051 min
 Response: 12113822
 Conc: 1606.92 ng/ml



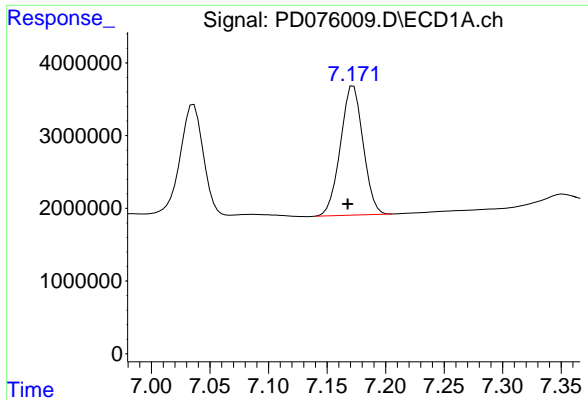
#24 Toxaphene-3

R.T.: 6.721 min
 Delta R.T.: 0.066 min
 Response: 20721331
 Conc: 1071.85 ng/ml

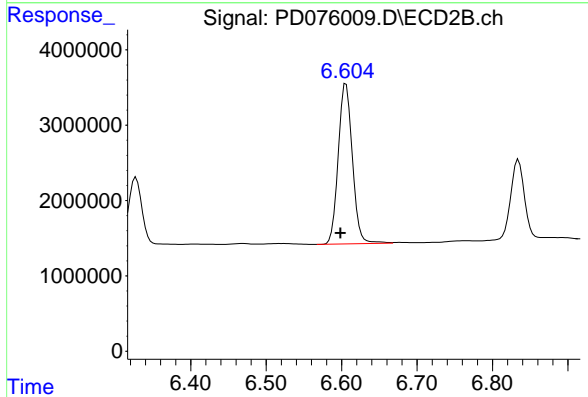


#24 Toxaphene-3

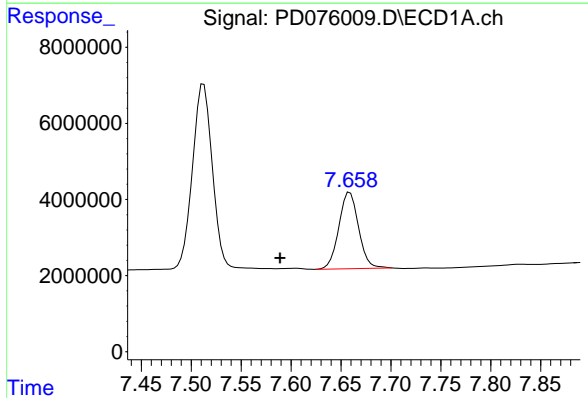
R.T.: 5.926 min
 Delta R.T.: -0.039 min
 Response: 11791977
 Conc: 1320.39 ng/ml



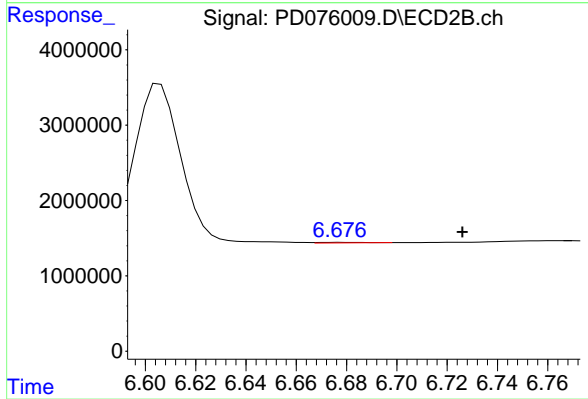
#25 Toxaphene-4
 R.T.: 7.173 min
 Delta R.T.: 0.005 min
 Response: 23981959
 Conc: 409.33 ng/ml



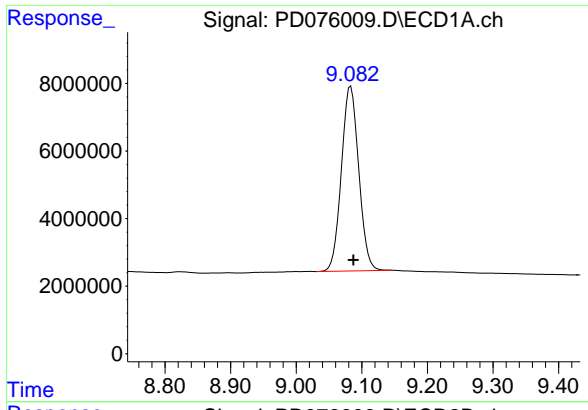
#25 Toxaphene-4
 R.T.: 6.606 min
 Delta R.T.: 0.008 min
 Response: 27722166
 Conc: 1157.78 ng/ml



#26 Toxaphene-5
 R.T.: 7.659 min
 Delta R.T.: 0.070 min
 Response: 27652422
 Conc: 655.52 ng/ml

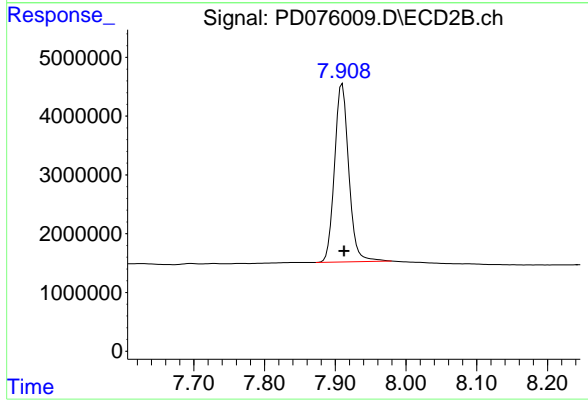


#26 Toxaphene-5
 R.T.: 6.678 min
 Delta R.T.: -0.048 min
 Response: 94670
 Conc: 2.66 ng/ml



#27 Decachlorobiphenyl

R.T.: 9.083 min
Delta R.T.: -0.004 min
Response: 100374274
Conc: 41.76 ng/ml



#27 Decachlorobiphenyl

R.T.: 7.910 min
Delta R.T.: -0.002 min
Response: 42431460
Conc: 40.50 ng/ml