

Data Path : Z:\pestpcbsrv\HPCHEM1\ECD\_D\Data\PD062321\  
 Data File : PD063944.D  
 Signal(s) : Signal #1: ECD1A.ch Signal #2: ECD2B.ch  
 Acq On : 23 Jun 2021 08:51  
 Operator : AR\AJ  
 Sample : PIBLK28  
 Misc :  
 ALS Vial : 2 Sample Multiplier: 1

Instrument :  
 ECD\_D  
 ClientSampleId :

Integration File signal 1: autoint1.e  
 Integration File signal 2: autoint2.e  
 Quant Time: Jun 24 04:06:50 2021  
 Quant Method : Z:\pestpcbsrv\HPCHEM1\ECD\_D\Method\PD061421CLP.M  
 Quant Title : GC Extractables  
 QLast Update : Mon Jun 21 04:24:00 2021  
 Response via : Initial Calibration  
 Integrator: ChemStation

Volume Inj. : 1 µl  
 Signal #1 Phase : ZB-MR2 Signal #2 Phase: ZB-MR1  
 Signal #1 Info : 30M x 0.32mm x0.2 Signal #2 Info : 30M x 0.32mm x 0.50µm

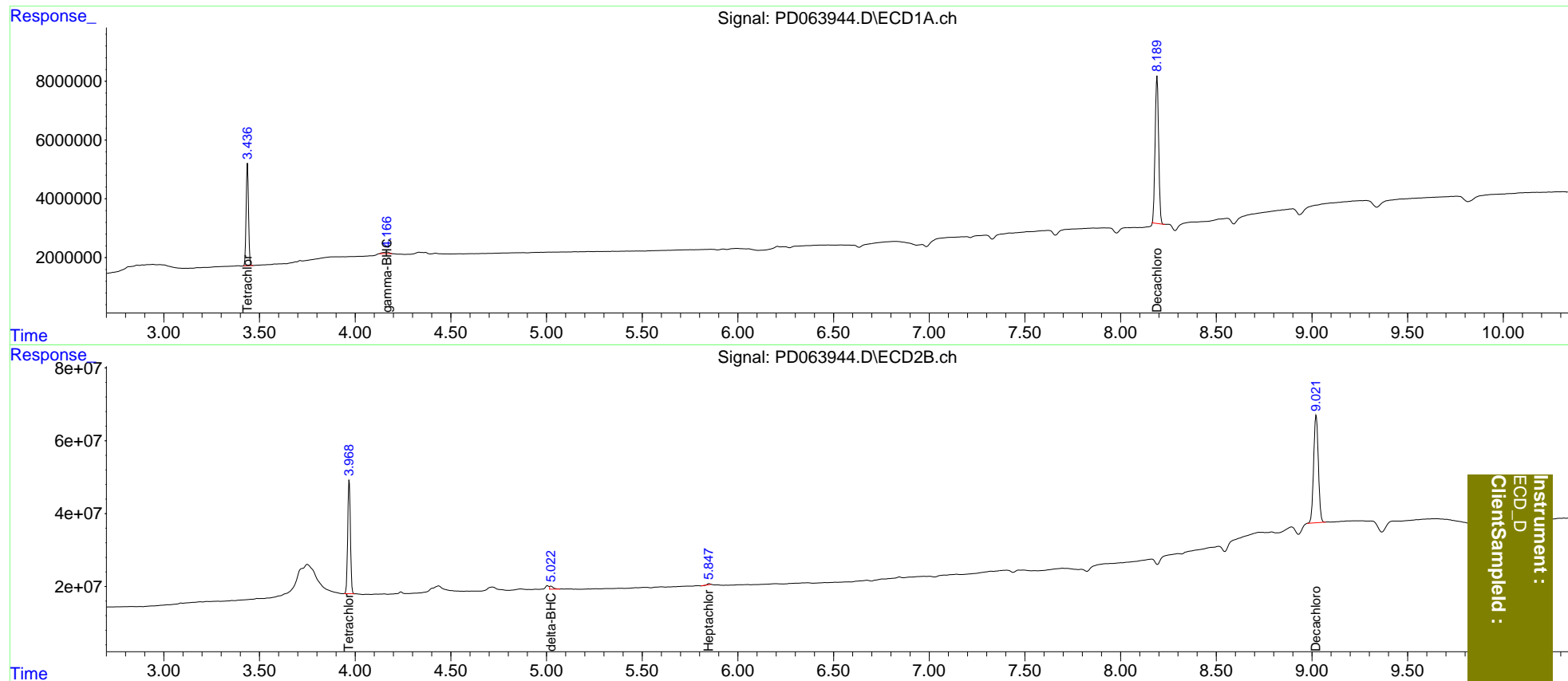
Compound	RT#1	RT#2	Resp#1	Resp#2	ng/ml	ng/ml
-----						
System Monitoring Compounds						
1) SA Tetrachlo...	3.438	3.969	30083481	306.0E6	19.352	19.322
27) SA Decachlor...	8.191	9.022	64318781	506.5E6	37.158	36.521
Target Compounds						
3) MA gamma-BHC...	4.167	0.000	1248404	0	0.549	N.D. #
7) B delta-BHC	0.000	5.024	0	11483845	N.D.	0.490
8) B Heptachlo...	0.000	5.849	0	2891488	N.D.	0.141
-----						

(f)=RT Delta > 1/2 Window (#)=Amounts differ by > 25% (m)=manual int.

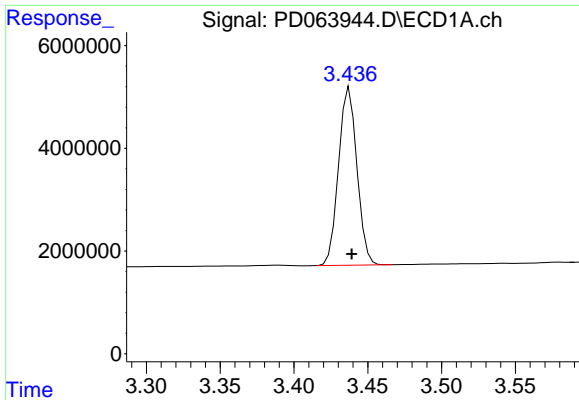
Data Path : Z:\pestpcbsrv\HPCHEM1\ECD\_D\Data\PD062321\  
 Data File : PD063944.D  
 Signal(s) : Signal #1: ECD1A.ch Signal #2: ECD2B.ch  
 Acq On : 23 Jun 2021 08:51  
 Operator : AR\AJ  
 Sample : PIBLK28  
 Misc :  
 ALS Vial : 2 Sample Multiplier: 1

Integration File signal 1: autoint1.e  
 Integration File signal 2: autoint2.e  
 Quant Time: Jun 24 04:06:50 2021  
 Quant Method : Z:\pestpcbsrv\HPCHEM1\ECD\_D\Method\PD061421CLP.M  
 Quant Title : GC Extractables  
 QLast Update : Mon Jun 21 04:24:00 2021  
 Response via : Initial Calibration  
 Integrator: ChemStation

Volume Inj. : 1 µl  
 Signal #1 Phase : ZB-MR2 Signal #2 Phase: ZB-MR1  
 Signal #1 Info : 30M x 0.32mm x0.2 Signal #2 Info : 30M x 0.32mm x 0.50µm

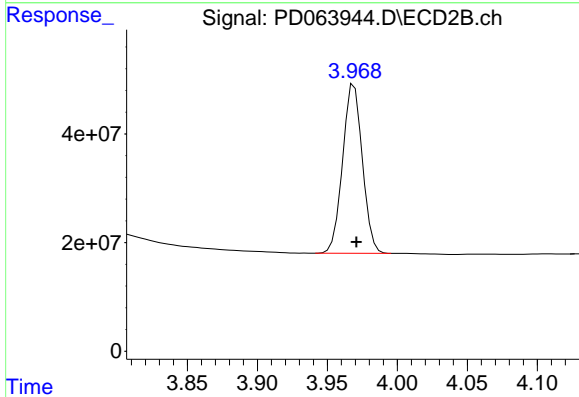


Instrument :  
 ECD\_D  
 ClientSampleId :

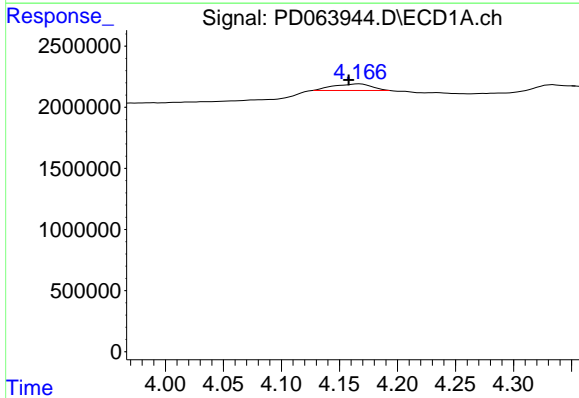


#1 Tetrachloro-m-xylene  
 R.T.: 3.438 min  
 Delta R.T.: -0.001 min  
 Response: 30083481  
 Conc: 19.35 ng/ml

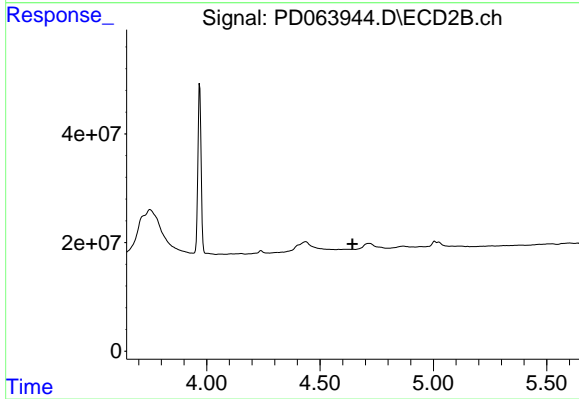
Instrument :  
 ECD\_D  
 ClientSampled :



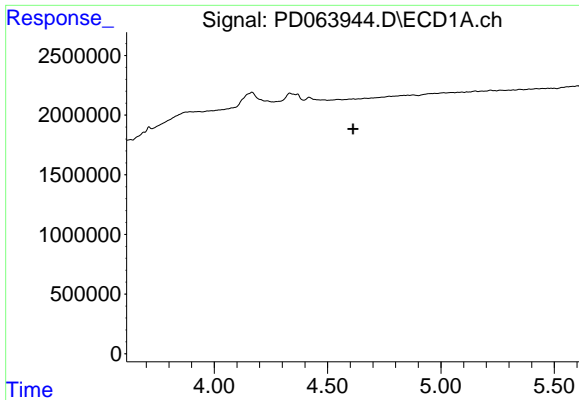
#1 Tetrachloro-m-xylene  
 R.T.: 3.969 min  
 Delta R.T.: -0.002 min  
 Response: 306018549  
 Conc: 19.32 ng/ml



#3 gamma-BHC (Lindane)  
 R.T.: 4.167 min  
 Delta R.T.: 0.009 min  
 Response: 1248404  
 Conc: 0.55 ng/ml



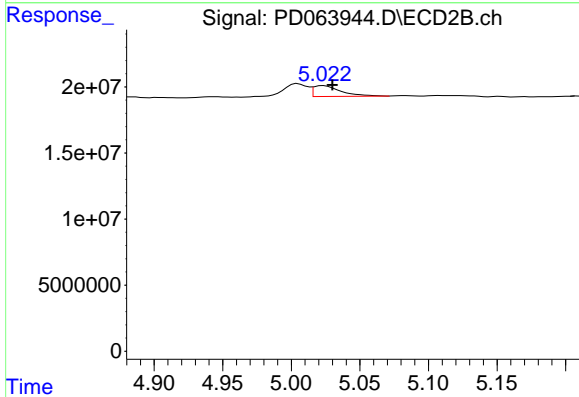
#3 gamma-BHC (Lindane)  
 R.T.: 0.000 min  
 Exp R.T. : 4.644 min  
 Response: 0  
 Conc: N.D.



#7 delta-BHC

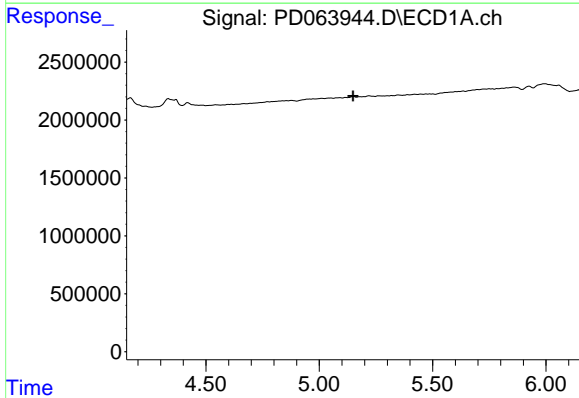
R.T.: 0.000 min  
 Exp R.T. : 4.613 min  
 Response: 0  
 Conc: N.D.

Instrument :  
 ECD\_D  
 ClientSampleId :



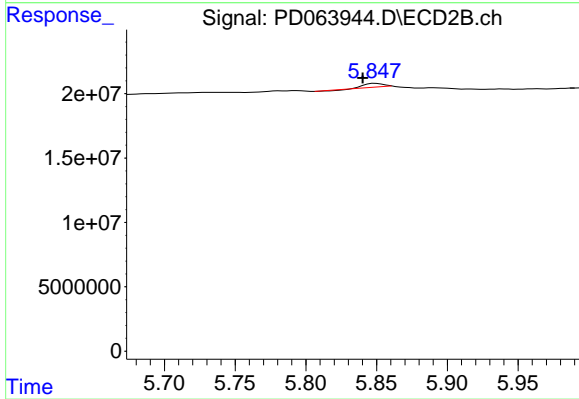
#7 delta-BHC

R.T.: 5.024 min  
 Delta R.T.: -0.006 min  
 Response: 11483845  
 Conc: 0.49 ng/ml



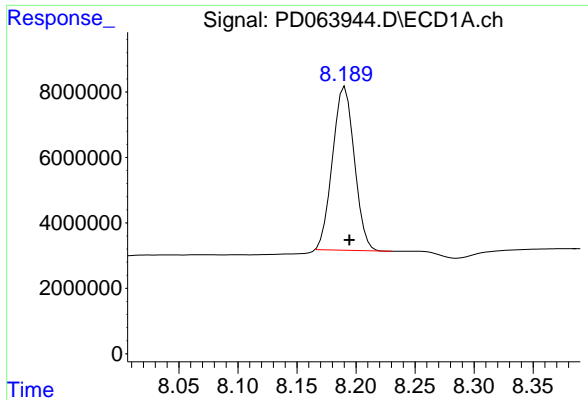
#8 Heptachlor epoxide

R.T.: 0.000 min  
 Exp R.T. : 5.149 min  
 Response: 0  
 Conc: N.D.



#8 Heptachlor epoxide

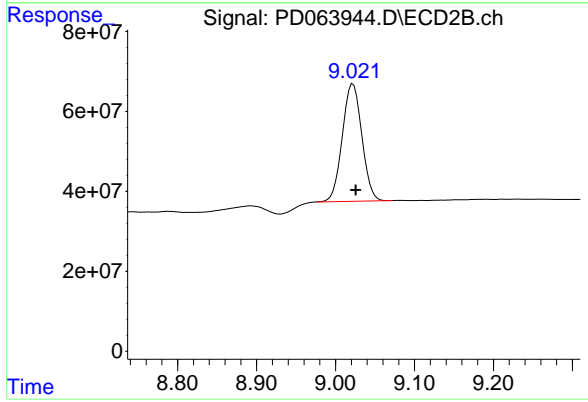
R.T.: 5.849 min  
 Delta R.T.: 0.009 min  
 Response: 2891488  
 Conc: 0.14 ng/ml



#27 Decachlorobiphenyl

R.T.: 8.191 min  
Delta R.T.: -0.004 min  
Response: 64318781  
Conc: 37.16 ng/ml

Instrument :  
ECD\_D  
ClientSampleId :



#27 Decachlorobiphenyl

R.T.: 9.022 min  
Delta R.T.: -0.003 min  
Response: 506475029  
Conc: 36.52 ng/ml