

Data Path : Z:\pestpcbsrv\HPCHEM1\ECD_D\Data\PD062421\
 Data File : PD063984.D
 Signal(s) : Signal #1: ECD1A.ch Signal #2: ECD2B.ch
 Acq On : 24 Jun 2021 12:00
 Operator : AR\AJ
 Sample : INDA315
 Misc :
 ALS Vial : 9 Sample Multiplier: 1

Instrument :
 ECD_D
ClientSampled :
 INDA3015

Manual Integrations
APPROVED
 Ankita
 6/25/2021 11:06:56 AM

Integration File signal 1: autoint1.e
 Integration File signal 2: autoint2.e
 Quant Time: Jun 25 08:47:51 2021
 Quant Method : Z:\pestpcbsrv\HPCHEM1\ECD_D\Method\PD061421CLP.M
 Quant Title : GC Extractables
 QLast Update : Mon Jun 21 04:24:00 2021
 Response via : Initial Calibration
 Integrator: ChemStation

Volume Inj. : 1 µl
 Signal #1 Phase : ZB-MR2 Signal #2 Phase: ZB-MR1
 Signal #1 Info : 30M x 0.32mm x0.2 Signal #2 Info : 30M x 0.32mm x 0.50µm

Compound	RT#1	RT#2	Resp#1	Resp#2	ng/ml	ng/ml

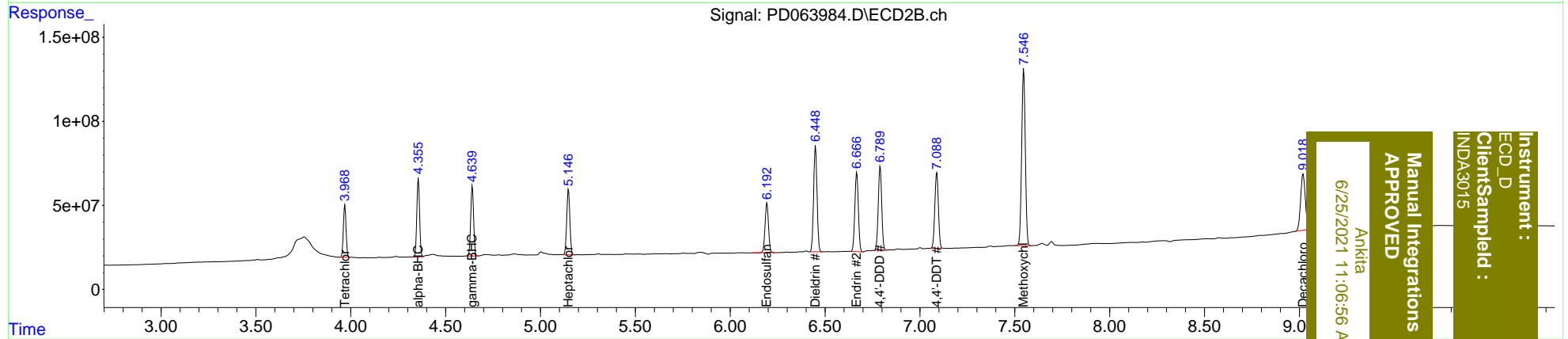
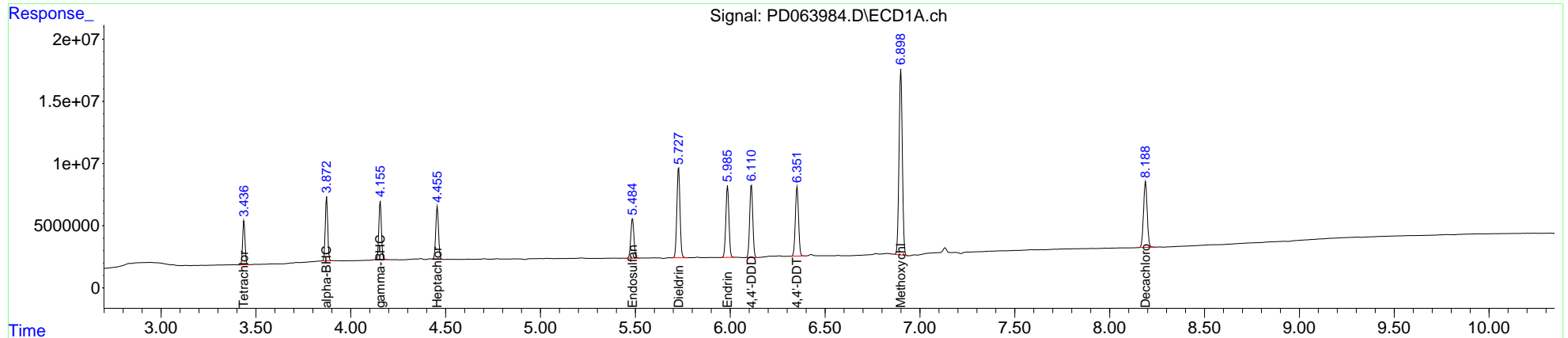
System Monitoring Compounds						
1) SA Tetrachlo...	3.437	3.969	30763569	304.8E6	19.790	19.246
27) SA Decachlor...	8.190	9.020	70462544	568.4E6	40.707	40.984
Target Compounds						
2) A alpha-BHC	3.873	4.357	46106358	475.6E6	19.712	19.143
3) MA gamma-BHC...	4.156	4.641	44380919	437.6E6	19.501	19.178
4) MA Heptachlor	4.456	5.148	43559169	446.3E6	19.952	19.156
9) A Endosulfan I	5.485	6.194	36526058	372.9E6	19.961	18.823
13) MA Dieldrin	5.729	6.450	83325249	786.2E6	39.816	37.580
14) MA Endrin	5.986	6.668	65418924	606.9E6	36.173	34.687
16) A 4,4'-DDD	6.112	6.789	66643121	630.7E6	40.364	37.466m
17) MA 4,4'-DDT	6.353	7.089	64820651	589.4E6	38.515	35.802
20) A Methoxychlor	6.900	7.547	180.9E6	1396.5E6	196.223	180.505

(f)=RT Delta > 1/2 Window (#)=Amounts differ by > 25% (m)=manual int.

Data Path : Z:\pestpcbsrv\HPCHEM1\ECD_D\Data\PD062421\
 Data File : PD063984.D
 Signal(s) : Signal #1: ECD1A.ch Signal #2: ECD2B.ch
 Acq On : 24 Jun 2021 12:00
 Operator : AR\AJ
 Sample : INDA315
 Misc :
 ALS Vial : 9 Sample Multiplier: 1

Integration File signal 1: autoint1.e
 Integration File signal 2: autoint2.e
 Quant Time: Jun 25 08:47:51 2021
 Quant Method : Z:\pestpcbsrv\HPCHEM1\ECD_D\Method\PD061421CLP.M
 Quant Title : GC Extractables
 QLast Update : Mon Jun 21 04:24:00 2021
 Response via : Initial Calibration
 Integrator: ChemStation

Volume Inj. : 1 µl
 Signal #1 Phase : ZB-MR2 Signal #2 Phase: ZB-MR1
 Signal #1 Info : 30M x 0.32mm x0.2 Signal #2 Info : 30M x 0.32mm x 0.50µm



Instrument : ECD_D
 Client Sample Id : INDA3015
 Manual Integrations APPROVED
 Ankitia
 6/25/2021 11:06:56 AM