

Data Path : Z:\pestpcbsrv\HPCHEM1\ECD\_D\Data\PD062523\  
 Data File : PD076144.D  
 Signal(s) : Signal #1: ECD1A.ch Signal #2: ECD2B.ch  
 Acq On : 24 Jun 2023 03:20  
 Operator : AR\AJ  
 Sample : PSTDCCC050  
 Misc :  
 ALS Vial : 4 Sample Multiplier: 1

Instrument :  
 ECD\_D  
 ClientSampleId :

Integration File signal 1: autoint1.e  
 Integration File signal 2: autoint2.e  
 Quant Time: Jun 26 05:38:15 2023  
 Quant Method : Z:\pestpcbsrv\HPCHEM1\ECD\_D\Method\PD061523.M  
 Quant Title : GC Extractables  
 QLast Update : Fri Jun 16 10:43:19 2023  
 Response via : Initial Calibration  
 Integrator: ChemStation

Volume Inj. : 2 µl  
 Signal #1 Phase : ZB-MR1 Signal #2 Phase: ZB-MR2  
 Signal #1 Info : 30M x 0.32mm x0.5 Signal #2 Info : 30M x 0.32mm x 0.25µm

	Compound	RT#1	RT#2	Resp#1	Resp#2	ng/ml	ng/ml
-----							
System Monitoring Compounds							
1)	SA Tetrachlo...	3.546	2.767	101.2E6	50600757	47.491	46.640
28)	SA Decachlor...	9.084	7.911	105.5E6	45387331	41.661	46.418
Target Compounds							
2)	A alpha-BHC	4.002	3.269	177.7E6	76477186	48.118	47.806
3)	MA gamma-BHC...	4.336	3.599	163.0E6	71068615	48.450	48.233
4)	MA Heptachlor	4.926	3.939	165.2E6	70674417	46.046	46.531
5)	MB Aldrin	5.270	4.219	165.0E6	73268005	47.100	49.134
6)	B beta-BHC	4.532	3.896	67845188	30987456	47.189	48.615
7)	B delta-BHC	4.780	4.126	163.9E6	73480716	49.310	50.712
8)	B Heptachlo...	5.696	4.721	150.4E6	64972168	46.669	47.299
9)	A Endosulfan I	6.084	5.091	138.3E6	58522598	46.114	45.785
10)	B gamma-Chl...	5.953	4.972	152.5E6	66553199	47.325	48.504
11)	B alpha-Chl...	6.033	5.036	149.7E6	65733355	46.313	47.919
12)	B 4,4'-DDE	6.205	5.225	135.9E6	60310057	47.533	54.033
13)	MA Dieldrin	6.359	5.357	144.1E6	66060309	46.103	48.964
14)	MA Endrin	6.590	5.632	113.8E6	55797004	42.553	45.848
15)	B Endosulfa...	6.808	5.926	113.9E6	53115396	44.095	49.233
16)	A 4,4'-DDD	6.723	5.780	112.7E6	52666685	49.528	59.762
17)	MA 4,4'-DDT	7.038	6.031	104.1E6	46113147	45.863	56.769
18)	B Endrin al...	6.938	6.106	57400456	42205133	28.606	48.764 #
19)	B Endosulfa...	7.174	6.328	113.5E6	54314478	45.038	50.263
20)	A Methoxychlor	7.513	6.606	55596293	26041678	42.952	56.265 #
21)	B Endrin ke...	7.660	6.835	130.5E6	62515406	46.829	51.455
22)	Mirex	8.135	7.017	92312467	48564154	43.085	46.330
24)	Chlordane-2	5.270f	4.352	165.0E6	4445618	1254.096	83.852 #
25)	Chlordane-3	5.953	4.972	152.5E6	66553199	293.562	448.294 #
26)	Chlordane-4	6.033	5.036	149.7E6	65733355	237.573	447.903 #
27)	Chlordane-5	0.000	5.926	0	53115396	N.D.	1098.164 #

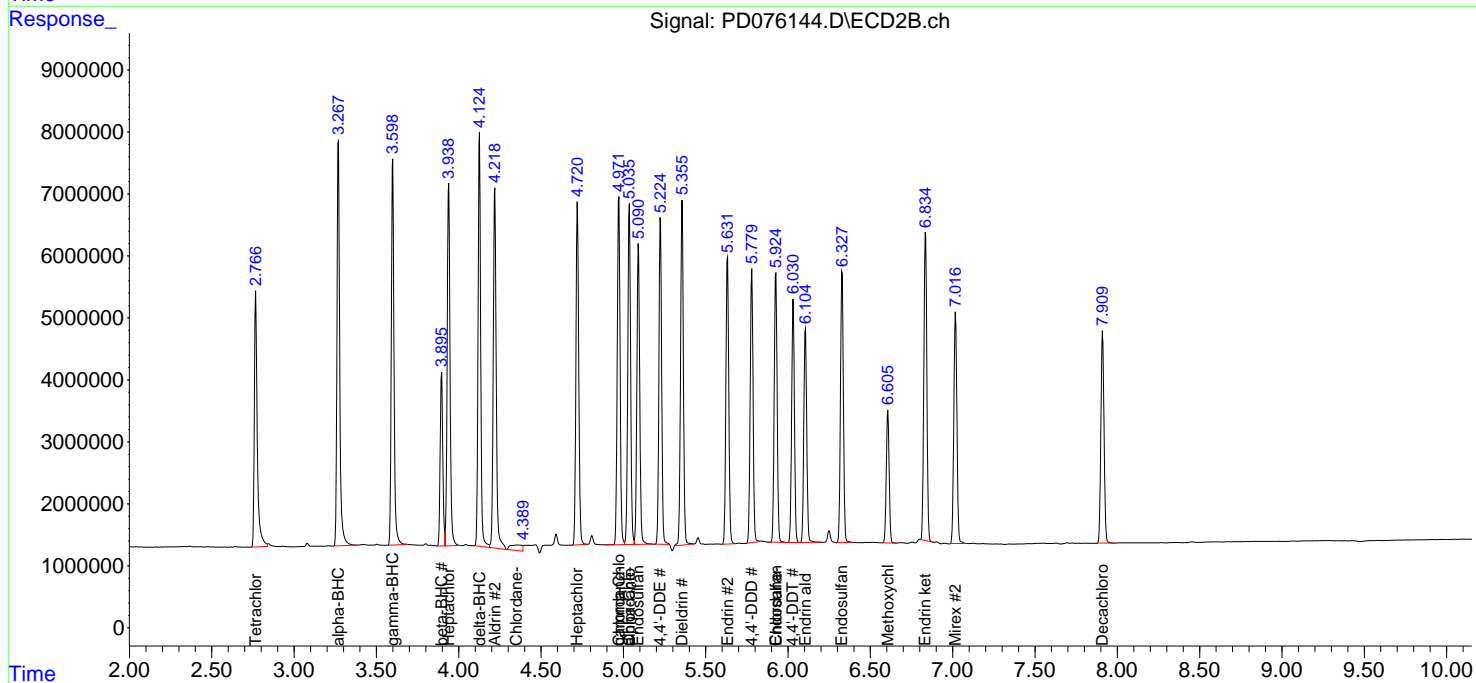
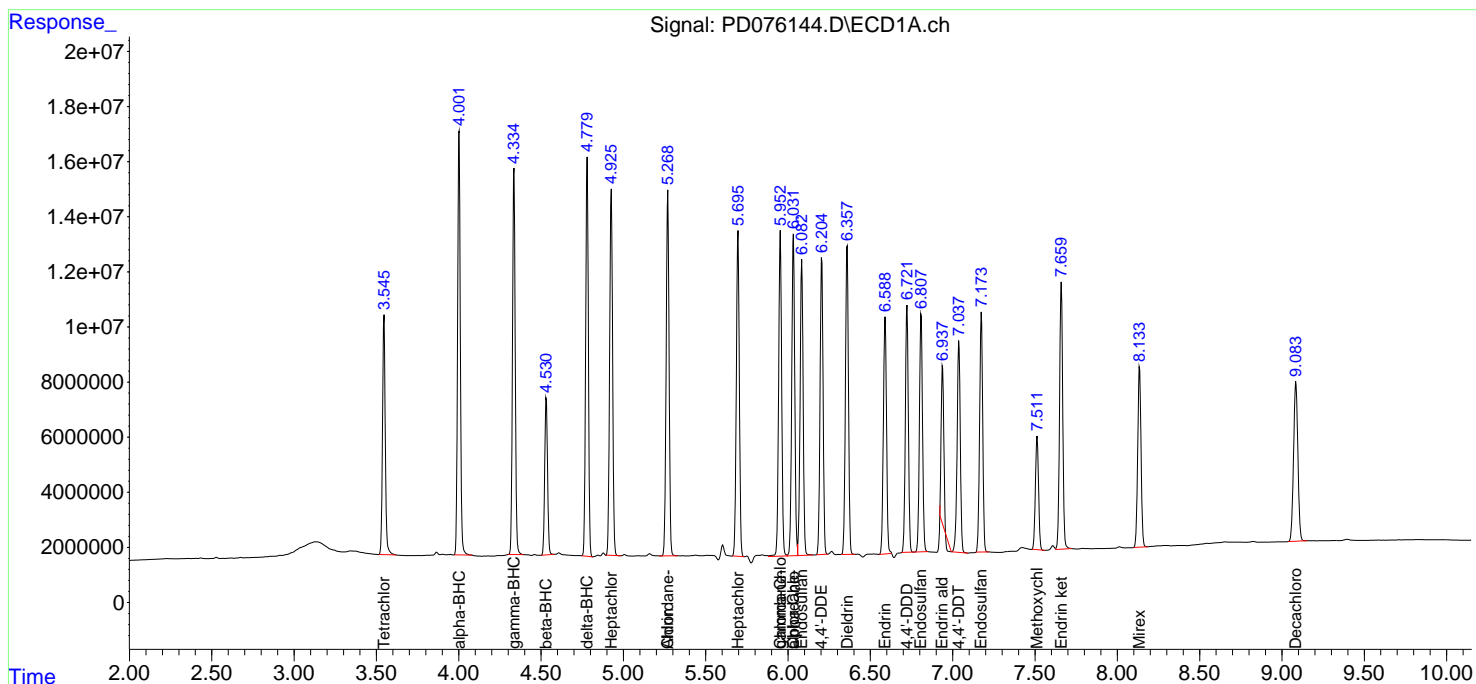
(f)=RT Delta > 1/2 Window (#)=Amounts differ by > 25% (m)=manual int.

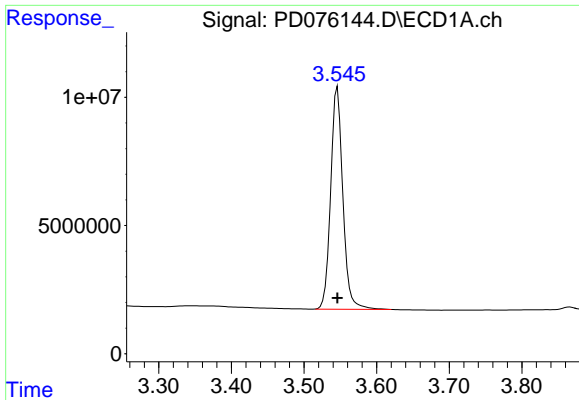
Data Path : Z:\pestpcbsrv\HPCHEM1\ECD\_D\Data\PD062523\  
 Data File : PD076144.D  
 Signal(s) : Signal #1: ECD1A.ch Signal #2: ECD2B.ch  
 Acq On : 24 Jun 2023 03:20  
 Operator : AR\AJ  
 Sample : PSTDCCC050  
 Misc :  
 ALS Vial : 4 Sample Multiplier: 1

Instrument :  
 ECD\_D  
 ClientSampleId :

Integration File signal 1: autoint1.e  
 Integration File signal 2: autoint2.e  
 Quant Time: Jun 26 05:38:15 2023  
 Quant Method : Z:\pestpcbsrv\HPCHEM1\ECD\_D\Method\PD061523.M  
 Quant Title : GC Extractables  
 QLast Update : Fri Jun 16 10:43:19 2023  
 Response via : Initial Calibration  
 Integrator: ChemStation

Volume Inj. : 2 µl  
 Signal #1 Phase : ZB-MR1 Signal #2 Phase: ZB-MR2  
 Signal #1 Info : 30M x 0.32mm x0.5 Signal #2 Info : 30M x 0.32mm x 0.25µm

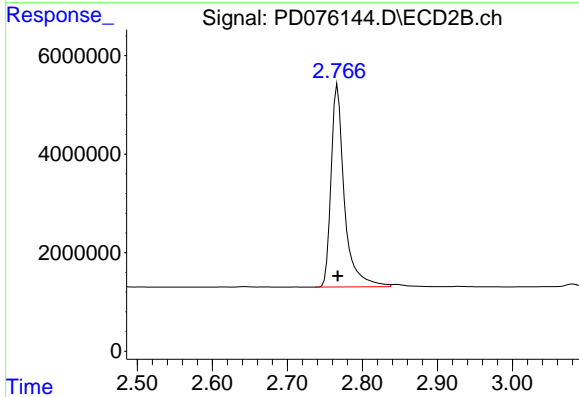




#1 Tetrachloro-m-xylene

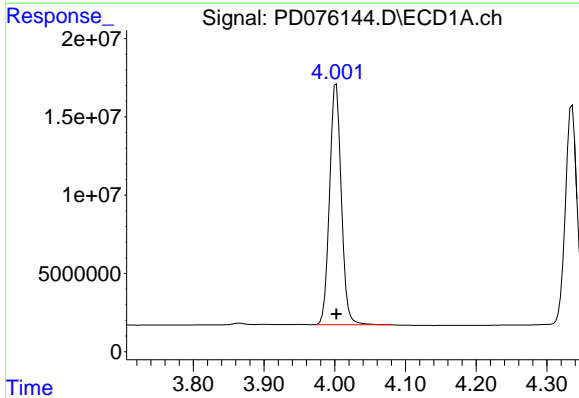
R.T.: 3.546 min  
 Delta R.T.: 0.000 min  
 Response: 101161419  
 Conc: 47.49 ng/ml

Instrument :  
 ECD\_D  
 ClientSampleId :



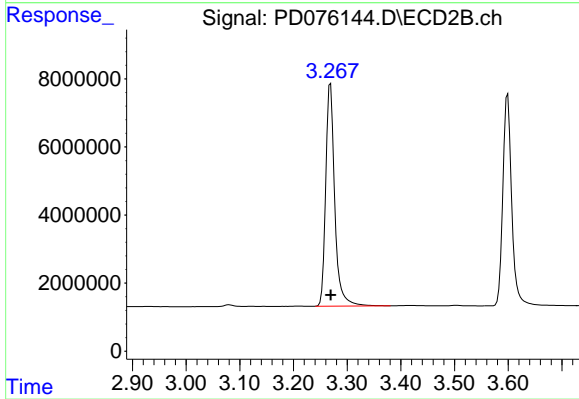
#1 Tetrachloro-m-xylene

R.T.: 2.767 min  
 Delta R.T.: 0.000 min  
 Response: 50600757  
 Conc: 46.64 ng/ml



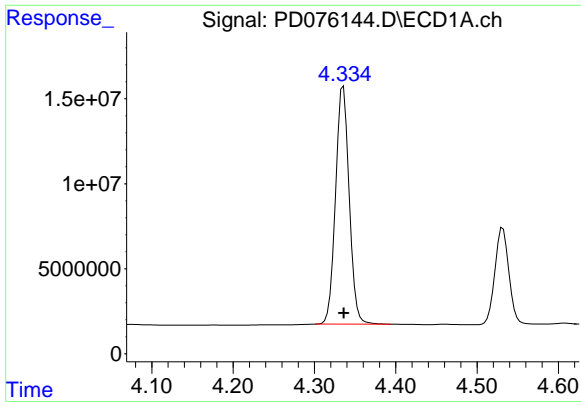
#2 alpha-BHC

R.T.: 4.002 min  
 Delta R.T.: 0.000 min  
 Response: 177655590  
 Conc: 48.12 ng/ml



#2 alpha-BHC

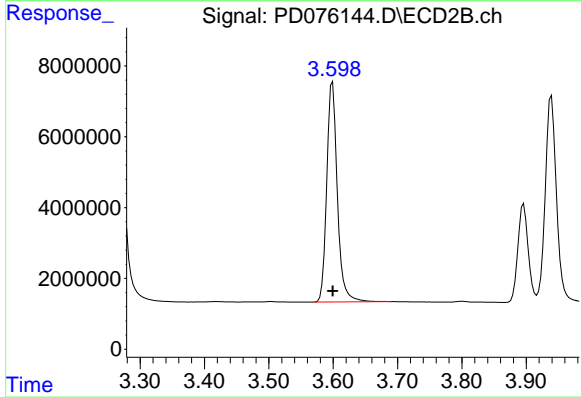
R.T.: 3.269 min  
 Delta R.T.: 0.000 min  
 Response: 76477186  
 Conc: 47.81 ng/ml



#3 gamma-BHC (Lindane)

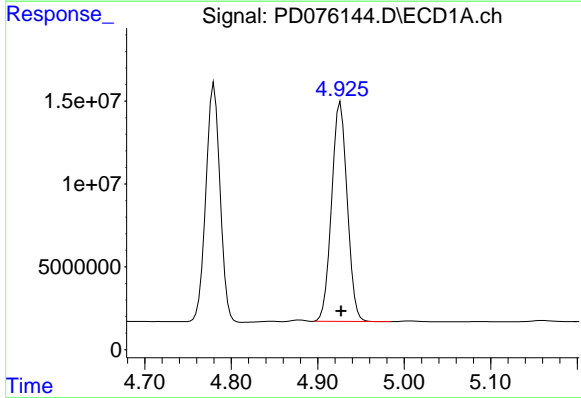
R.T.: 4.336 min  
 Delta R.T.: 0.000 min  
 Response: 163030309  
 Conc: 48.45 ng/ml

Instrument :  
 ECD\_D  
 ClientSampleId :



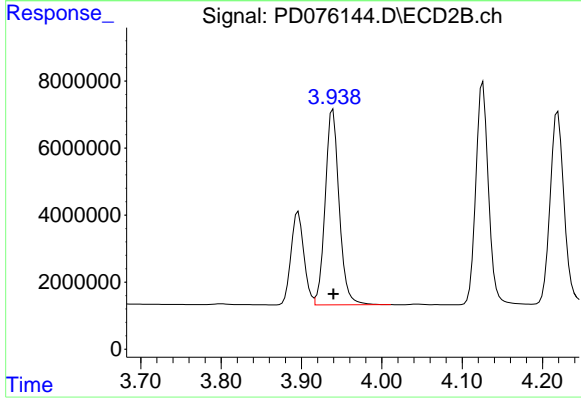
#3 gamma-BHC (Lindane)

R.T.: 3.599 min  
 Delta R.T.: 0.000 min  
 Response: 71068615  
 Conc: 48.23 ng/ml



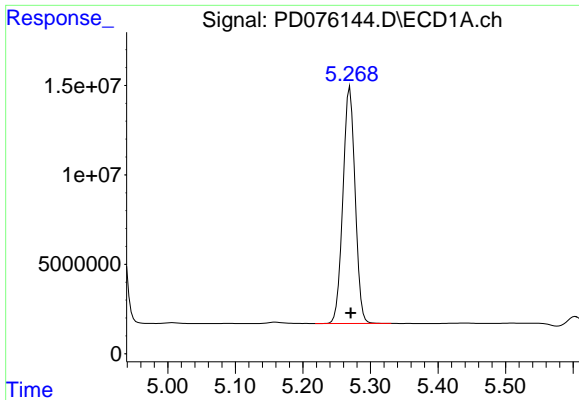
#4 Heptachlor

R.T.: 4.926 min  
 Delta R.T.: 0.000 min  
 Response: 165150178  
 Conc: 46.05 ng/ml



#4 Heptachlor

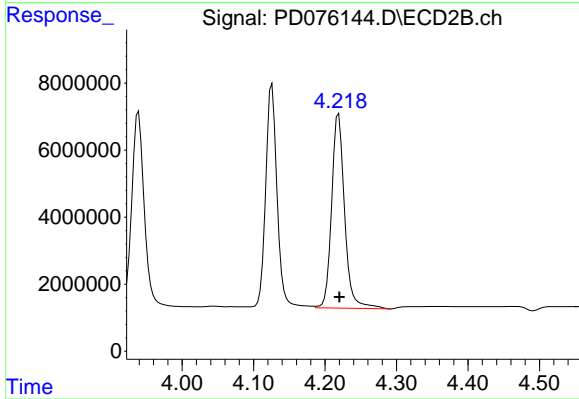
R.T.: 3.939 min  
 Delta R.T.: 0.000 min  
 Response: 70674417  
 Conc: 46.53 ng/ml



#5 Aldrin

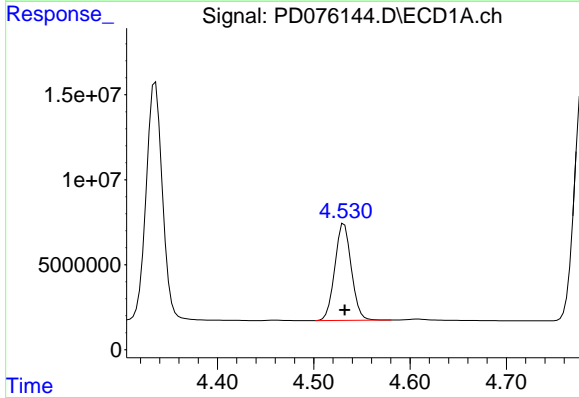
R.T.: 5.270 min  
 Delta R.T.: 0.000 min  
 Response: 165049601  
 Conc: 47.10 ng/ml

Instrument :  
 ECD\_D  
 ClientSampleId :



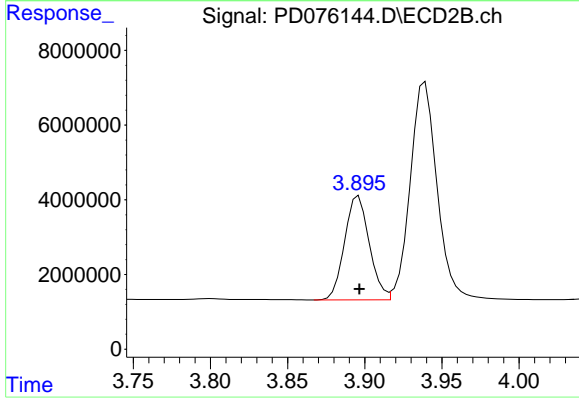
#5 Aldrin

R.T.: 4.219 min  
 Delta R.T.: -0.001 min  
 Response: 73268005  
 Conc: 49.13 ng/ml



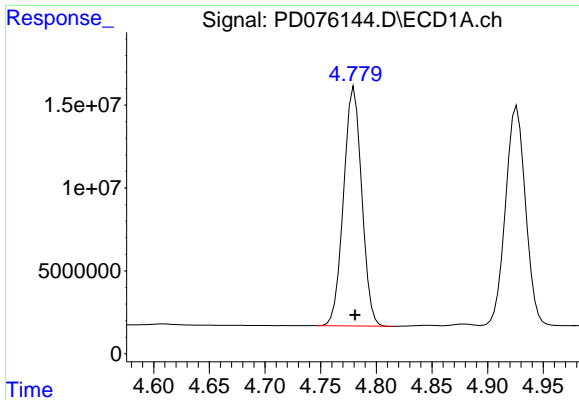
#6 beta-BHC

R.T.: 4.532 min  
 Delta R.T.: 0.000 min  
 Response: 67845188  
 Conc: 47.19 ng/ml



#6 beta-BHC

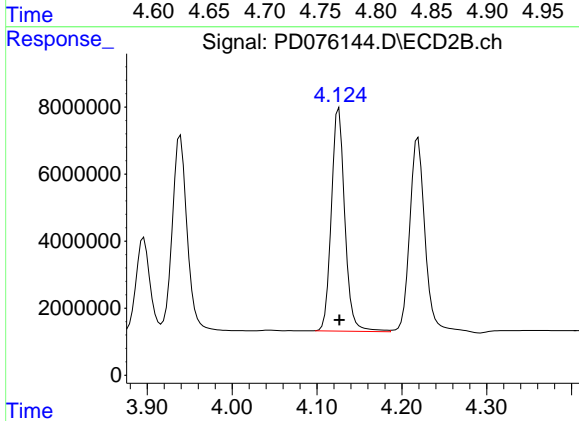
R.T.: 3.896 min  
 Delta R.T.: 0.000 min  
 Response: 30987456  
 Conc: 48.61 ng/ml



#7 delta-BHC

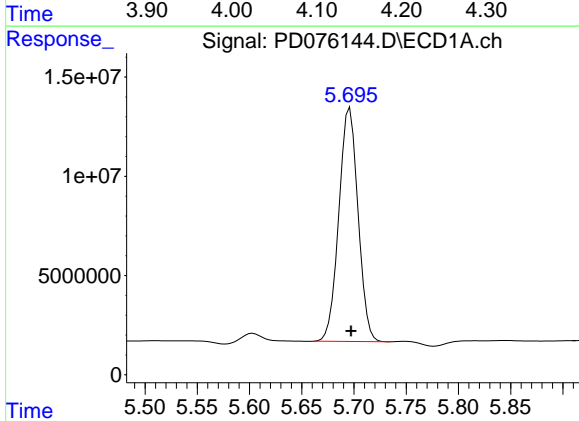
R.T.: 4.780 min  
 Delta R.T.: 0.000 min  
 Response: 163889944  
 Conc: 49.31 ng/ml

Instrument :  
 ECD\_D  
 ClientSampleId :



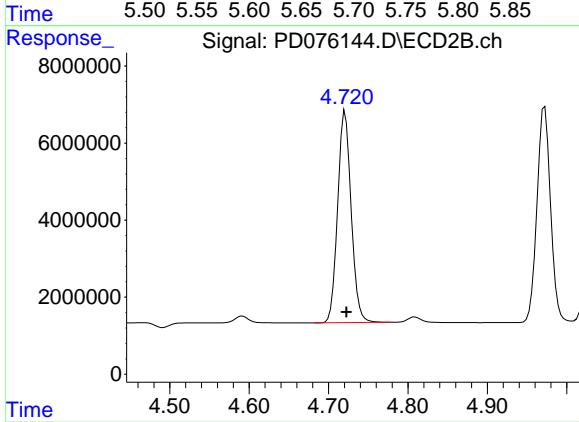
#7 delta-BHC

R.T.: 4.126 min  
 Delta R.T.: 0.000 min  
 Response: 73480716  
 Conc: 50.71 ng/ml



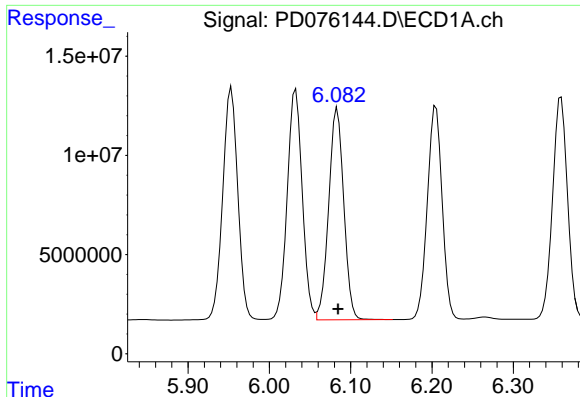
#8 Heptachlor epoxide

R.T.: 5.696 min  
 Delta R.T.: -0.001 min  
 Response: 150381165  
 Conc: 46.67 ng/ml



#8 Heptachlor epoxide

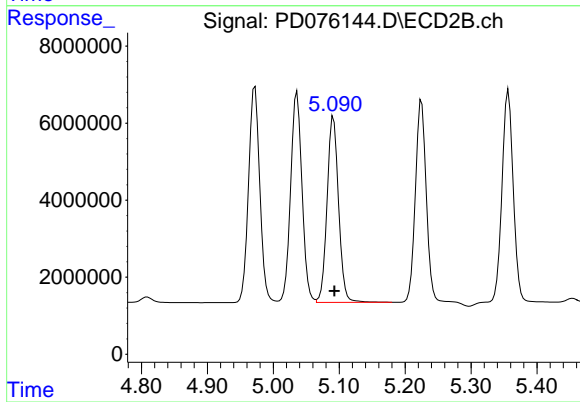
R.T.: 4.721 min  
 Delta R.T.: -0.002 min  
 Response: 64972168  
 Conc: 47.30 ng/ml



#9 Endosulfan I

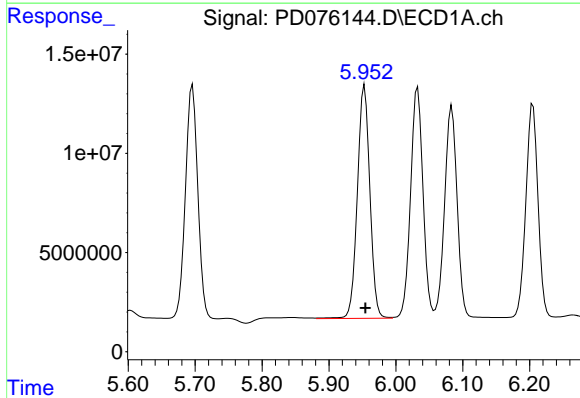
R.T.: 6.084 min  
 Delta R.T.: -0.001 min  
 Response: 138319565  
 Conc: 46.11 ng/ml

Instrument :  
 ECD\_D  
 ClientSampleId :



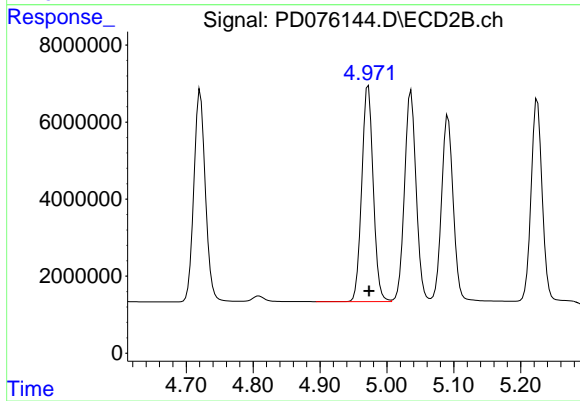
#9 Endosulfan I

R.T.: 5.091 min  
 Delta R.T.: -0.001 min  
 Response: 58522598  
 Conc: 45.78 ng/ml



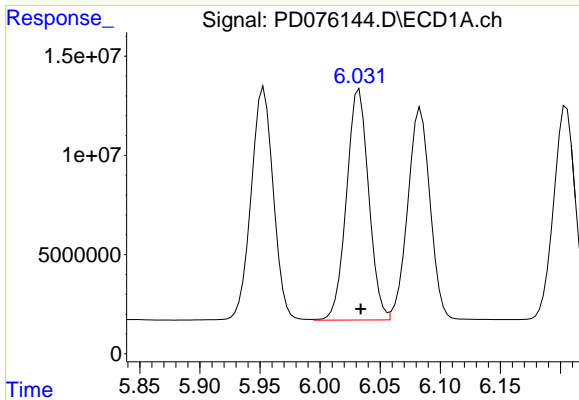
#10 gamma-Chlordane

R.T.: 5.953 min  
 Delta R.T.: -0.001 min  
 Response: 152450013  
 Conc: 47.33 ng/ml



#10 gamma-Chlordane

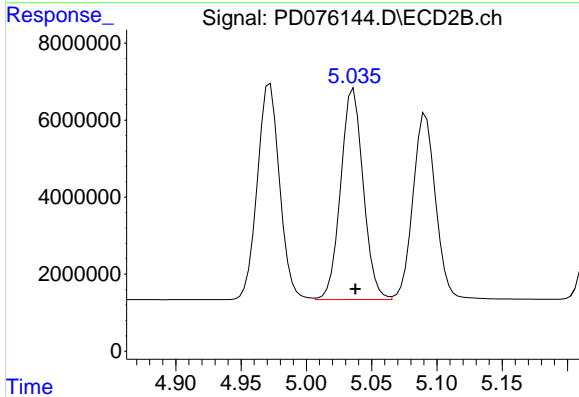
R.T.: 4.972 min  
 Delta R.T.: 0.000 min  
 Response: 66553199  
 Conc: 48.50 ng/ml



#11 alpha-Chlordane

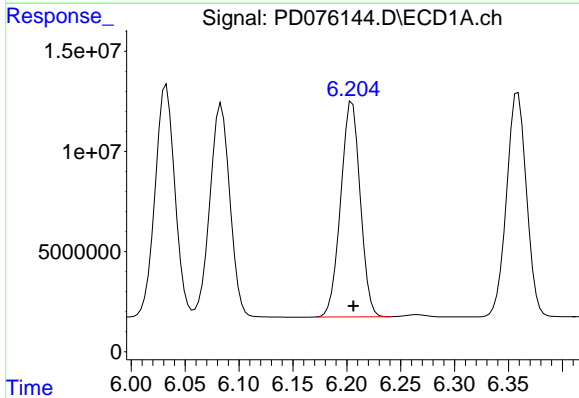
R.T.: 6.033 min  
 Delta R.T.: -0.001 min  
 Response: 149723479  
 Conc: 46.31 ng/ml

Instrument :  
 ECD\_D  
 ClientSampleId :



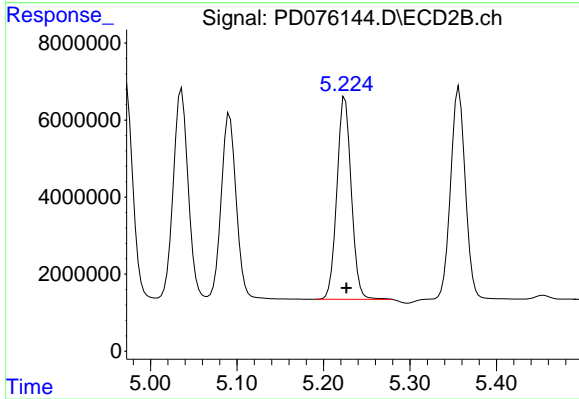
#11 alpha-Chlordane

R.T.: 5.036 min  
 Delta R.T.: -0.001 min  
 Response: 65733355  
 Conc: 47.92 ng/ml



#12 4,4'-DDE

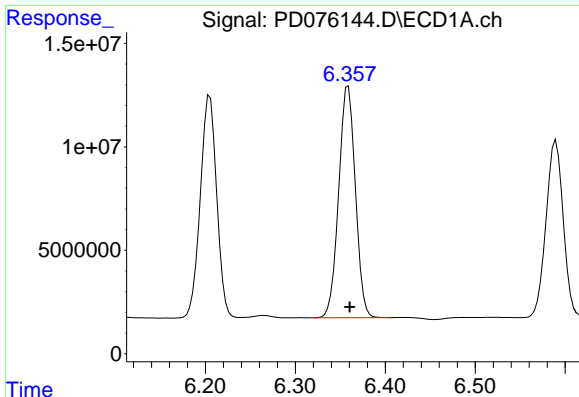
R.T.: 6.205 min  
 Delta R.T.: -0.001 min  
 Response: 135855394  
 Conc: 47.53 ng/ml



#12 4,4'-DDE

R.T.: 5.225 min  
 Delta R.T.: -0.002 min  
 Response: 60310057  
 Conc: 54.03 ng/ml

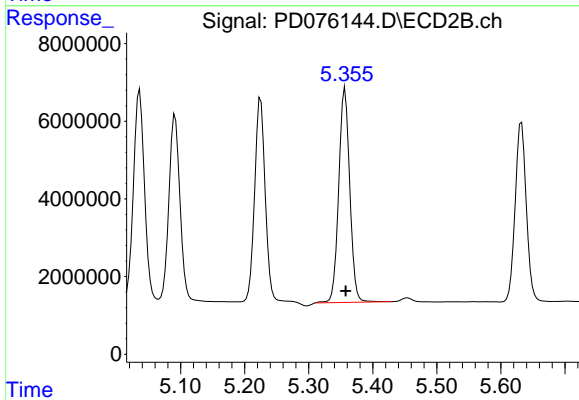




#13 Dieldrin

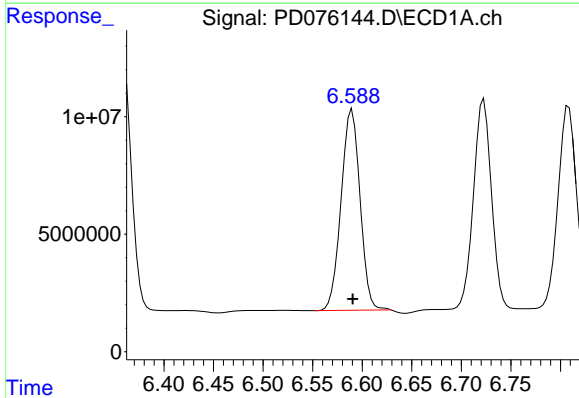
R.T.: 6.359 min  
 Delta R.T.: -0.002 min  
 Response: 144070327  
 Conc: 46.10 ng/ml

Instrument :  
 ECD\_D  
 ClientSampleId :



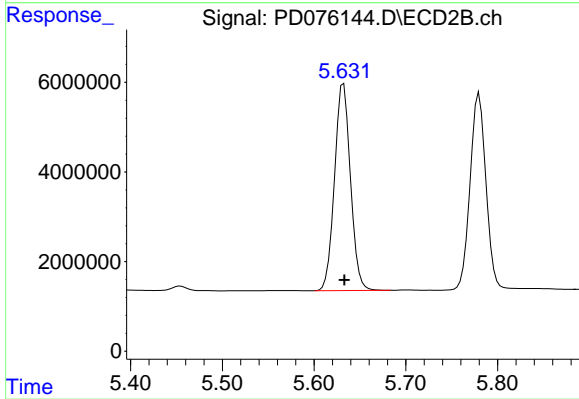
#13 Dieldrin

R.T.: 5.357 min  
 Delta R.T.: -0.001 min  
 Response: 66060309  
 Conc: 48.96 ng/ml



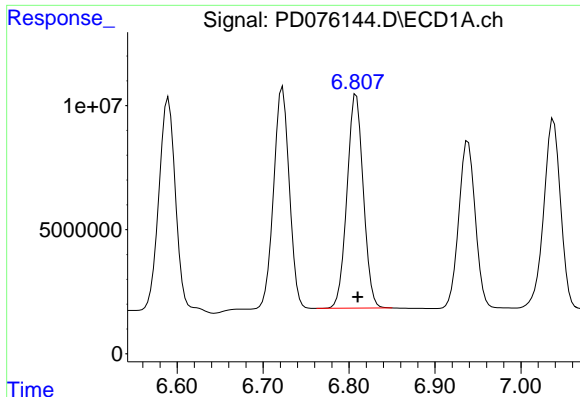
#14 Endrin

R.T.: 6.590 min  
 Delta R.T.: 0.000 min  
 Response: 113800090  
 Conc: 42.55 ng/ml



#14 Endrin

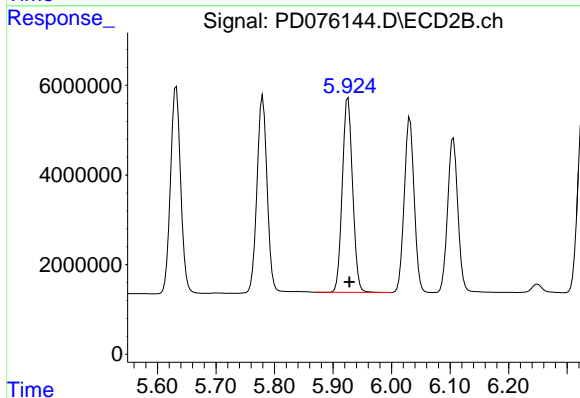
R.T.: 5.632 min  
 Delta R.T.: -0.001 min  
 Response: 55797004  
 Conc: 45.85 ng/ml



#15 Endosulfan II

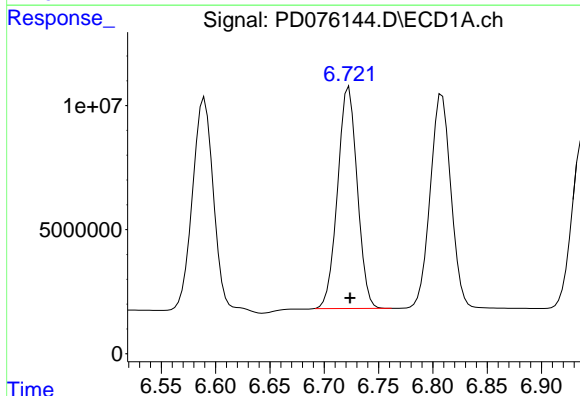
R.T.: 6.808 min  
 Delta R.T.: -0.002 min  
 Response: 113924729  
 Conc: 44.09 ng/ml

Instrument :  
 ECD\_D  
 ClientSampleId :



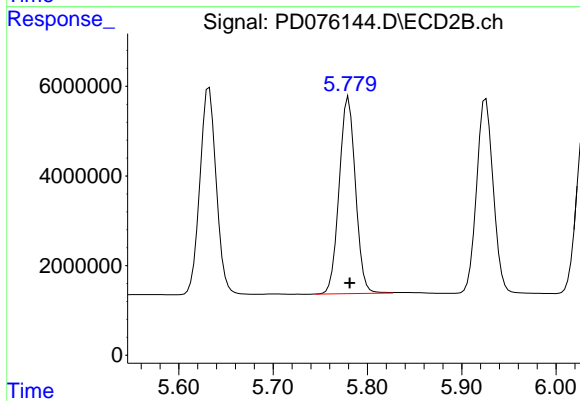
#15 Endosulfan II

R.T.: 5.926 min  
 Delta R.T.: -0.002 min  
 Response: 53115396  
 Conc: 49.23 ng/ml



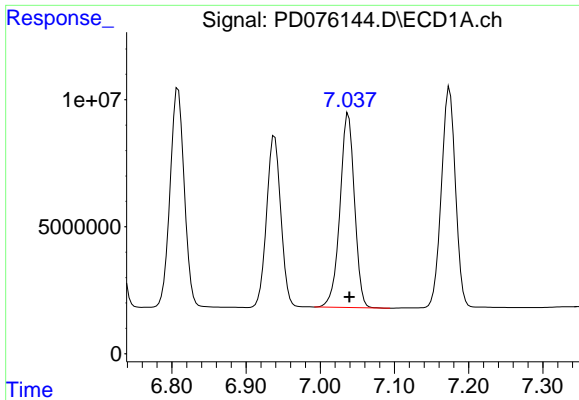
#16 4,4'-DDD

R.T.: 6.723 min  
 Delta R.T.: -0.001 min  
 Response: 112707625  
 Conc: 49.53 ng/ml



#16 4,4'-DDD

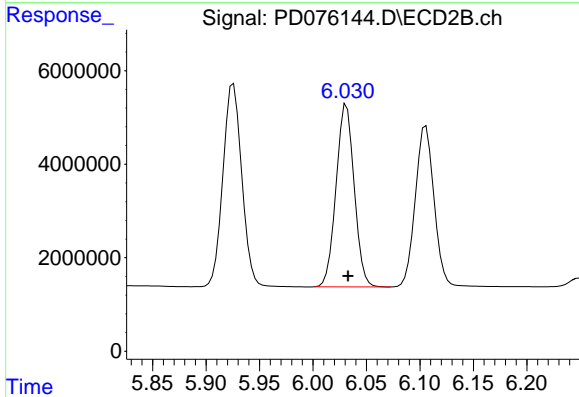
R.T.: 5.780 min  
 Delta R.T.: -0.001 min  
 Response: 52666685  
 Conc: 59.76 ng/ml



#17 4,4'-DDT

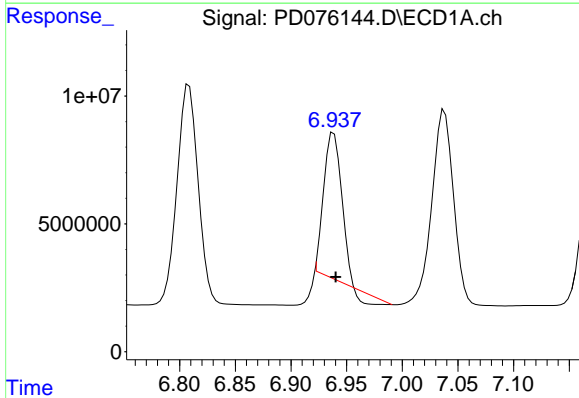
R.T.: 7.038 min  
 Delta R.T.: -0.002 min  
 Response: 104075034  
 Conc: 45.86 ng/ml

Instrument :  
 ECD\_D  
 ClientSampleId :



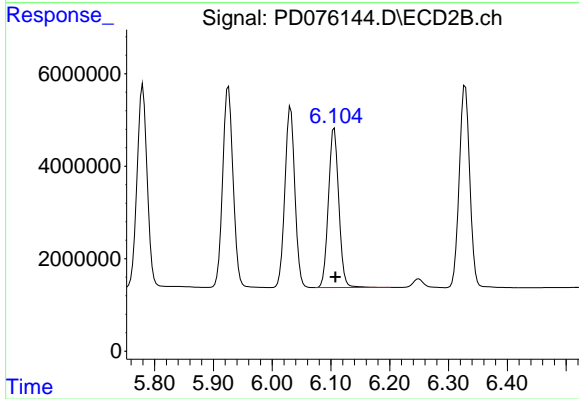
#17 4,4'-DDT

R.T.: 6.031 min  
 Delta R.T.: -0.002 min  
 Response: 46113147  
 Conc: 56.77 ng/ml



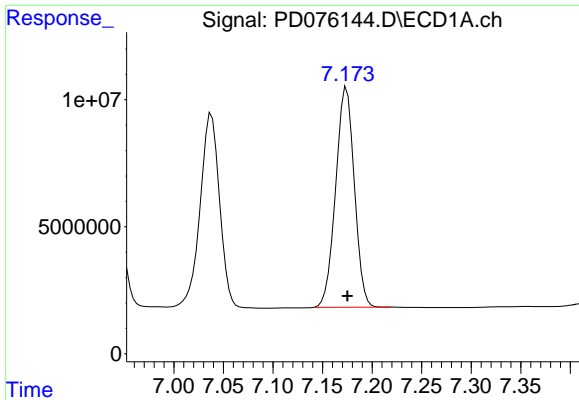
#18 Endrin aldehyde

R.T.: 6.938 min  
 Delta R.T.: -0.002 min  
 Response: 57400456  
 Conc: 28.61 ng/ml



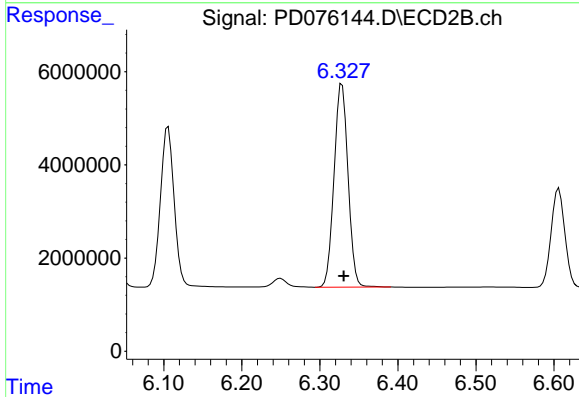
#18 Endrin aldehyde

R.T.: 6.106 min  
 Delta R.T.: -0.002 min  
 Response: 42205133  
 Conc: 48.76 ng/ml

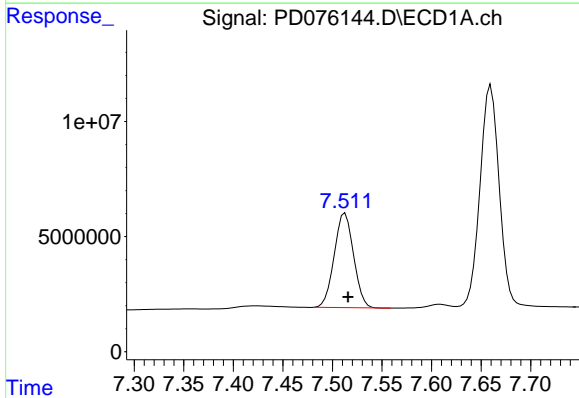


#19 Endosulfan Sulfate  
 R.T.: 7.174 min  
 Delta R.T.: 0.000 min  
 Response: 113466417  
 Conc: 45.04 ng/ml

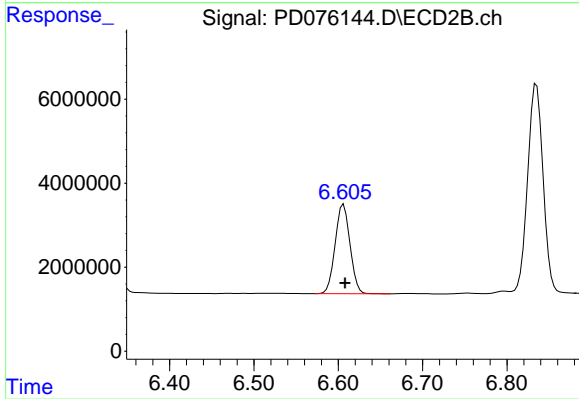
Instrument :  
 ECD\_D  
 ClientSampleId :



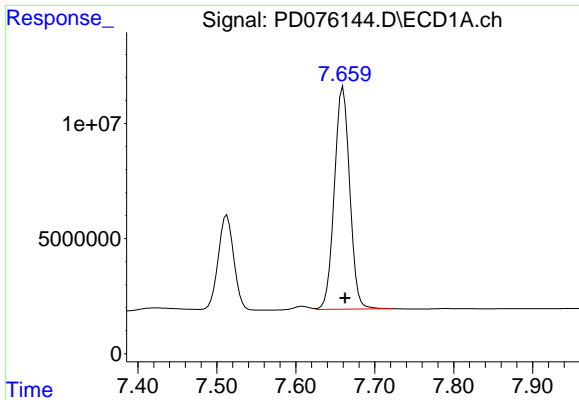
#19 Endosulfan Sulfate  
 R.T.: 6.328 min  
 Delta R.T.: -0.002 min  
 Response: 54314478  
 Conc: 50.26 ng/ml



#20 Methoxychlor  
 R.T.: 7.513 min  
 Delta R.T.: -0.003 min  
 Response: 55596293  
 Conc: 42.95 ng/ml



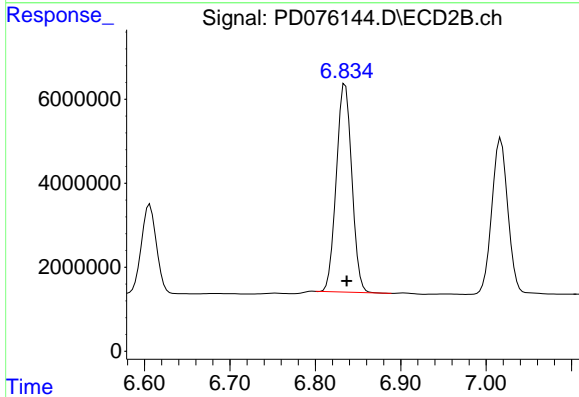
#20 Methoxychlor  
 R.T.: 6.606 min  
 Delta R.T.: -0.002 min  
 Response: 26041678  
 Conc: 56.26 ng/ml



#21 Endrin ketone

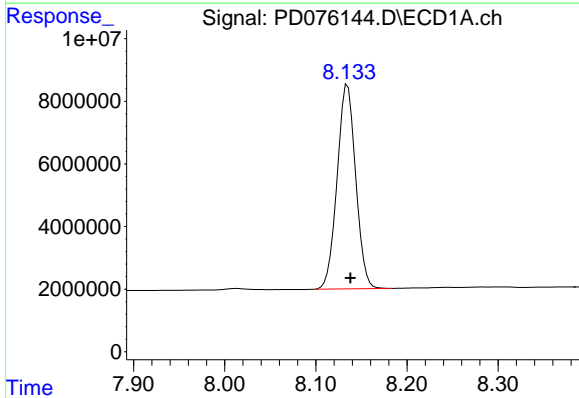
R.T.: 7.660 min  
 Delta R.T.: -0.003 min  
 Response: 130463466  
 Conc: 46.83 ng/ml

Instrument :  
 ECD\_D  
 ClientSampleId :



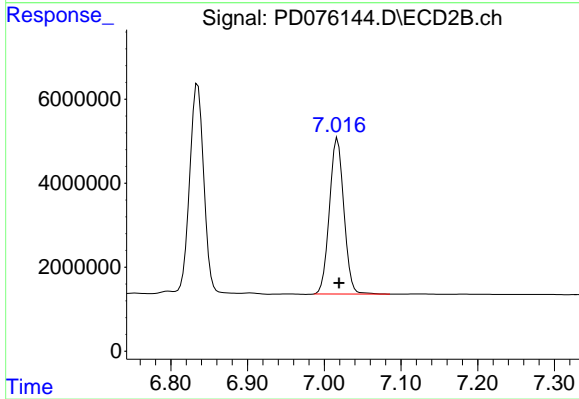
#21 Endrin ketone

R.T.: 6.835 min  
 Delta R.T.: -0.002 min  
 Response: 62515406  
 Conc: 51.46 ng/ml



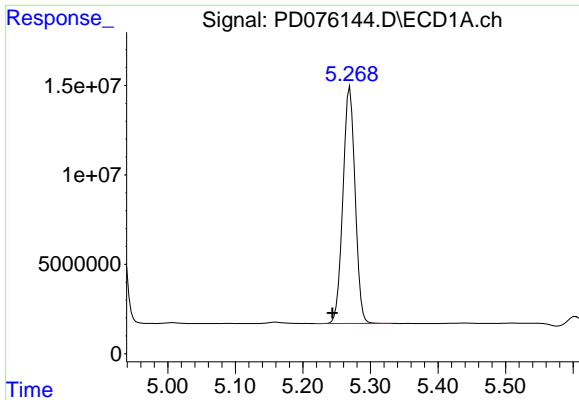
#22 Mirex

R.T.: 8.135 min  
 Delta R.T.: -0.003 min  
 Response: 92312467  
 Conc: 43.09 ng/ml



#22 Mirex

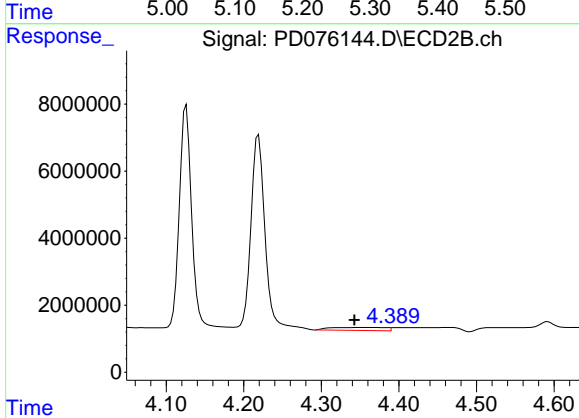
R.T.: 7.017 min  
 Delta R.T.: -0.002 min  
 Response: 48564154  
 Conc: 46.33 ng/ml



#24 Chlordane-2

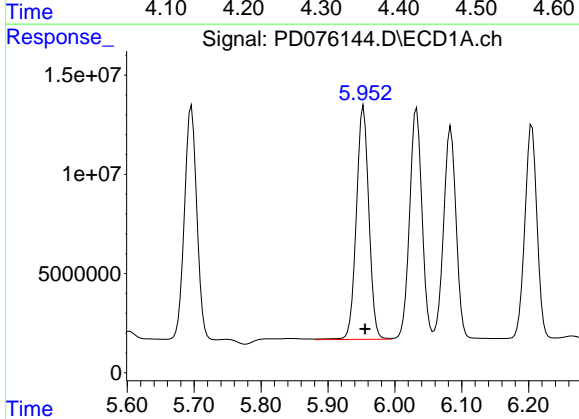
R.T.: 5.270 min  
 Delta R.T.: 0.026 min  
 Response: 165049601  
 Conc: 1254.10 ng/m

Instrument :  
 ECD\_D  
 ClientSampleId :



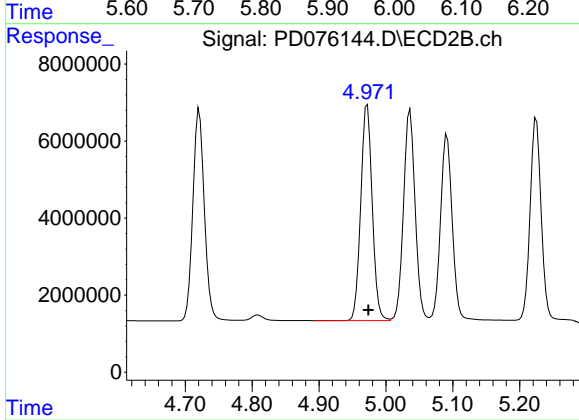
#24 Chlordane-2

R.T.: 4.352 min  
 Delta R.T.: 0.009 min  
 Response: 4445618  
 Conc: 83.85 ng/ml



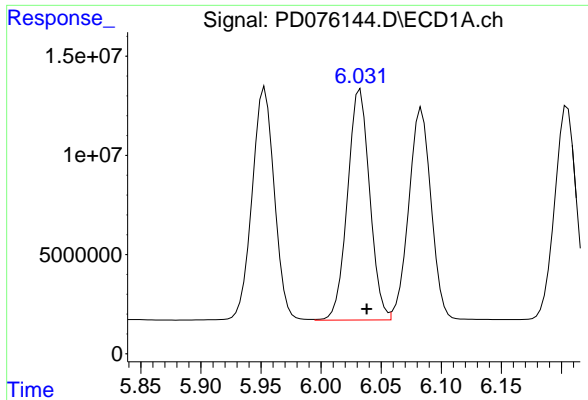
#25 Chlordane-3

R.T.: 5.953 min  
 Delta R.T.: -0.002 min  
 Response: 152450013  
 Conc: 293.56 ng/ml



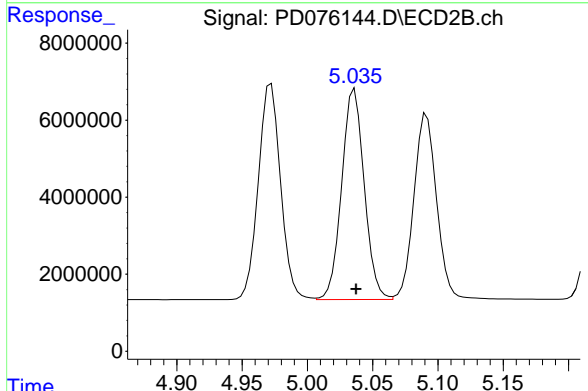
#25 Chlordane-3

R.T.: 4.972 min  
 Delta R.T.: -0.001 min  
 Response: 66553199  
 Conc: 448.29 ng/ml

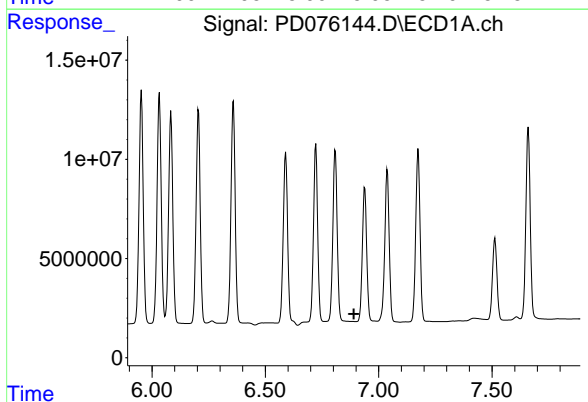


#26 Chlordane-4  
 R.T.: 6.033 min  
 Delta R.T.: -0.005 min  
 Response: 149723479  
 Conc: 237.57 ng/ml

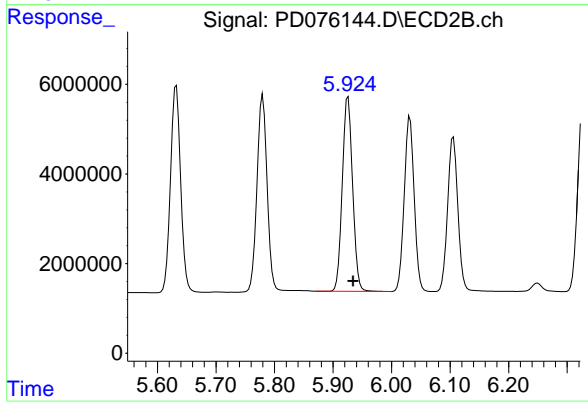
Instrument :  
 ECD\_D  
 ClientSampleId :



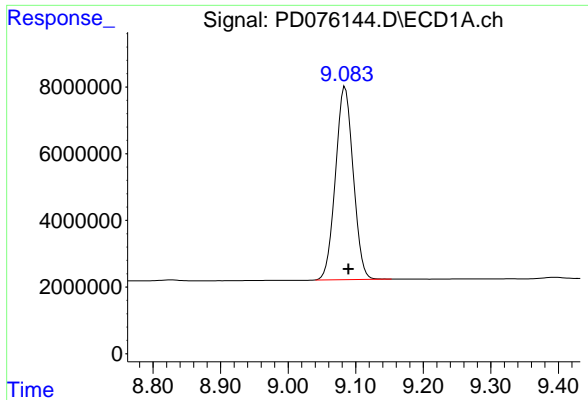
#26 Chlordane-4  
 R.T.: 5.036 min  
 Delta R.T.: -0.001 min  
 Response: 65733355  
 Conc: 447.90 ng/ml



#27 Chlordane-5  
 R.T.: 0.000 min  
 Exp R.T. : 6.890 min  
 Response: 0  
 Conc: N.D.



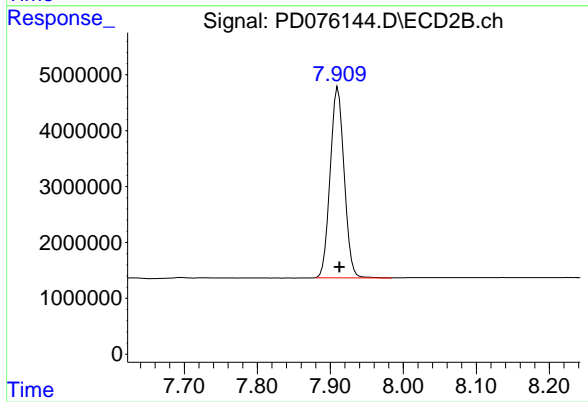
#27 Chlordane-5  
 R.T.: 5.926 min  
 Delta R.T.: -0.009 min  
 Response: 53115396  
 Conc: 1098.16 ng/ml



#28 Decachlorobiphenyl

R.T.: 9.084 min  
Delta R.T.: -0.005 min  
Response: 105543247  
Conc: 41.66 ng/ml

Instrument :  
ECD\_D  
ClientSampleId :



#28 Decachlorobiphenyl

R.T.: 7.911 min  
Delta R.T.: -0.002 min  
Response: 45387331  
Conc: 46.42 ng/ml