

Data Path : Z:\pestpcbsrv\HPCHEM1\ECD_D\Data\PD062623\
 Data File : PD076150.D
 Signal(s) : Signal #1: ECD1A.ch Signal #2: ECD2B.ch
 Acq On : 25 Jun 2023 16:07
 Operator : AR\AJ
 Sample : PB153790BL
 Misc :
 ALS Vial : 5 Sample Multiplier: 1

Instrument :
 ECD_D
 ClientSampleId :
 PB153790BL

Integration File signal 1: autoint1.e
 Integration File signal 2: autoint2.e
 Quant Time: Jun 26 01:19:31 2023
 Quant Method : Z:\pestpcbsrv\HPCHEM1\ECD_D\Method\PD061523.M
 Quant Title : GC Extractables
 QLast Update : Fri Jun 16 10:43:19 2023
 Response via : Initial Calibration
 Integrator: ChemStation

Volume Inj. : 2 µl
 Signal #1 Phase : ZB-MR2 Signal #2 Phase: ZB-MR2
 Signal #1 Info : 30M x 0.32mm x0.5 Signal #2 Info : 30M x 0.32mm x 0.25µm

Compound	RT#1	RT#2	Resp#1	Resp#2	ng/ml	ng/ml

System Monitoring Compounds						
1) SA Tetrachlo...	3.551	2.765	41814633	21291033	19.630	19.624
2) SA Decachlor...	9.095	7.914	46660044	21183953	18.418	21.665
Target Compounds						
7) B delta-BHC	4.780	0.000	2510696	0	0.755	N.D. #
8) B Heptachlo...	5.698	0.000	1227215	0	0.381	N.D. #
9) A Endosulfan I	6.062f	0.000	89867	0	0.030	N.D. #
10) B gamma-Chl...	5.926f	0.000	751282	0	0.233	N.D. #
11) B alpha-Chl...	6.062f	0.000	89867	0	0.028	N.D. #
14) MA Endrin	6.586	5.651f	112350	408518	0.042	0.336 #
15) B Endosulfa...	6.817	0.000	347657	0	0.135	N.D. #
19) B Endosulfa...	0.000	6.342	0	115992	N.D.	0.107 #
21) B Endrin ke...	7.679f	0.000	3373167	0	1.211	N.D. #
22) Mirex	8.162f	7.043f	224626	402738	0.105	0.384 #
25) Chlordane-3	5.926f	0.000	751282	0	1.447	N.D. #
26) Chlordane-4	6.062f	0.000	89867	0	0.143	N.D. #

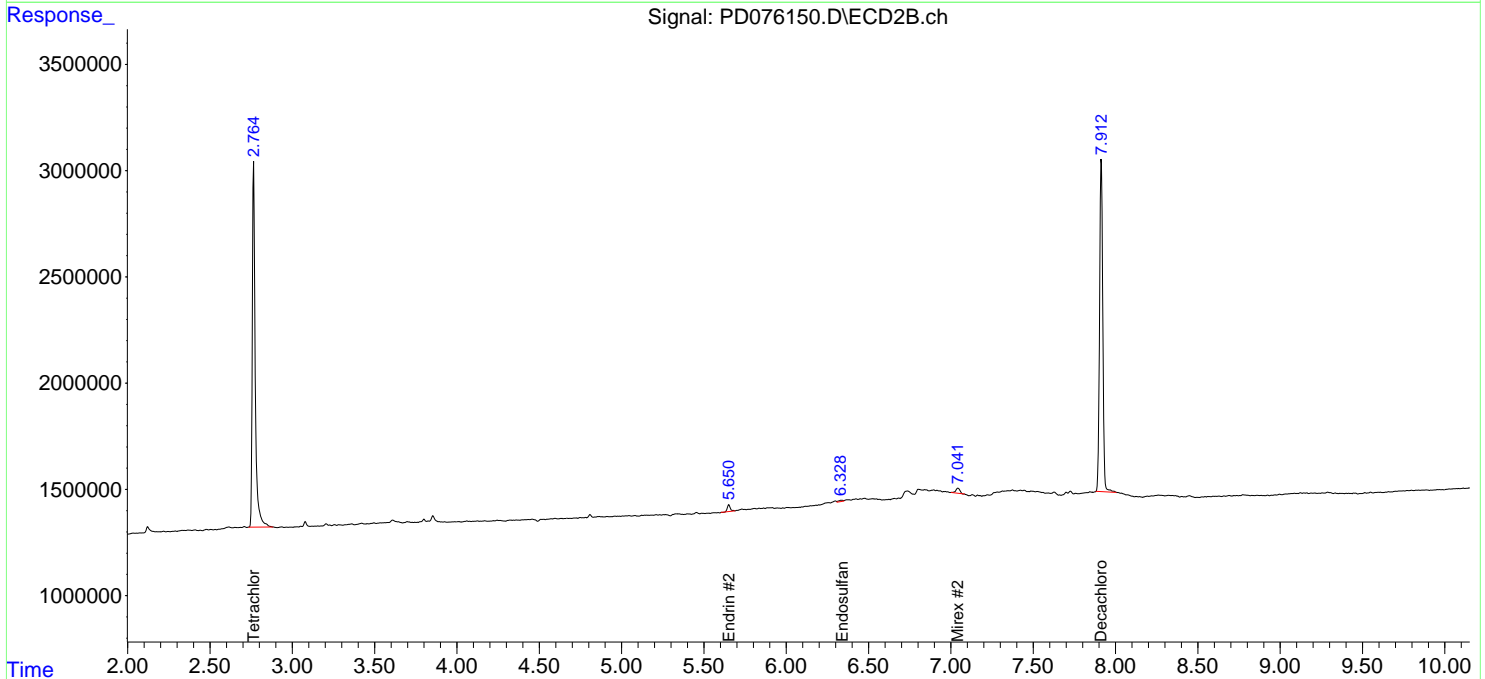
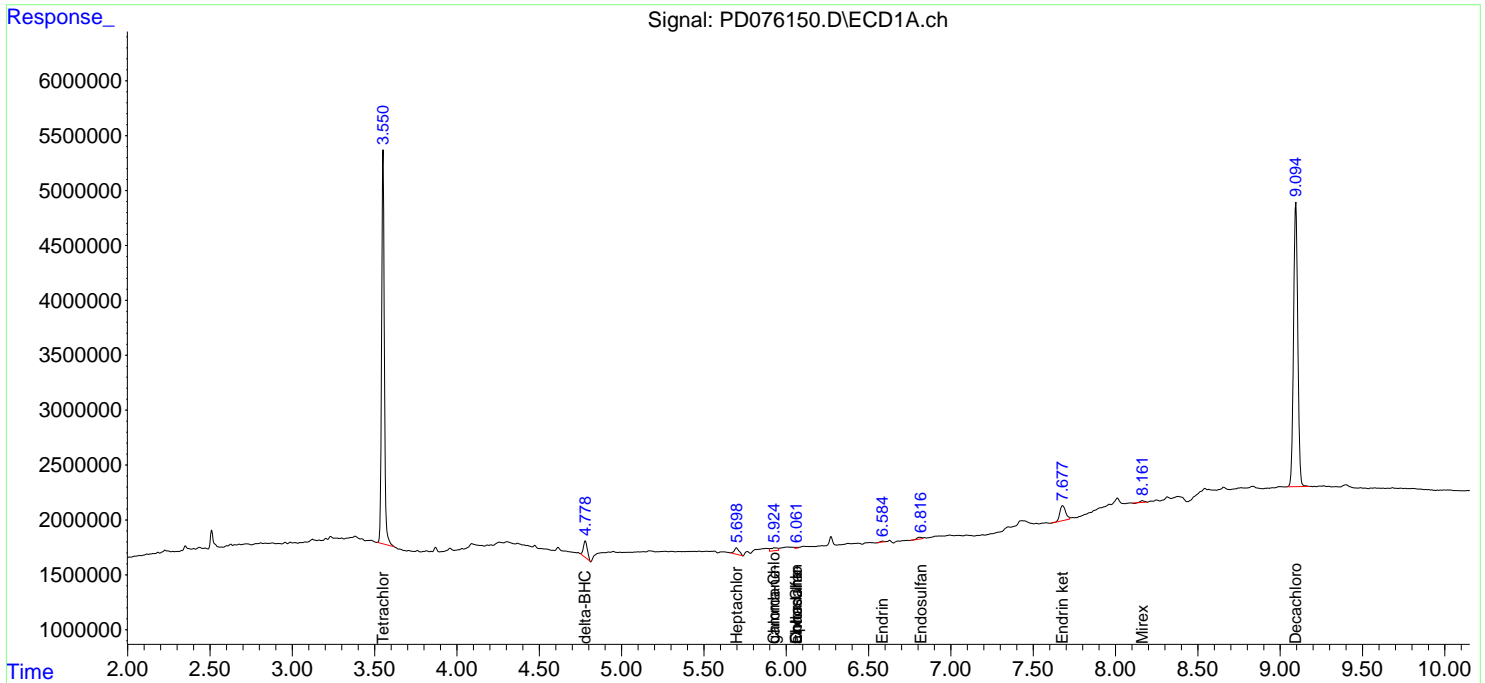
(f)=RT Delta > 1/2 Window (#)=Amounts differ by > 25% (m)=manual int.

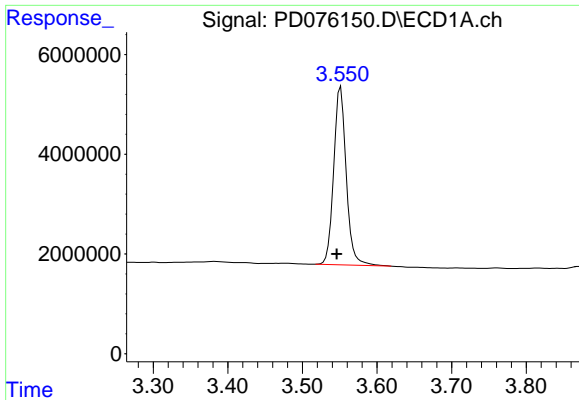
Data Path : Z:\pestpcbsrv\HPCHEM1\ECD_D\Data\PD062623\
 Data File : PD076150.D
 Signal(s) : Signal #1: ECD1A.ch Signal #2: ECD2B.ch
 Acq On : 25 Jun 2023 16:07
 Operator : AR\AJ
 Sample : PB153790BL
 Misc :
 ALS Vial : 5 Sample Multiplier: 1

Instrument :
 ECD_D
 ClientSampleId :
 PB153790BL

Integration File signal 1: autoint1.e
 Integration File signal 2: autoint2.e
 Quant Time: Jun 26 01:19:31 2023
 Quant Method : Z:\pestpcbsrv\HPCHEM1\ECD_D\Method\PD061523.M
 Quant Title : GC Extractables
 QLast Update : Fri Jun 16 10:43:19 2023
 Response via : Initial Calibration
 Integrator: ChemStation

Volume Inj. : 2 µl
 Signal #1 Phase : ZB-MR1 Signal #2 Phase: ZB-MR2
 Signal #1 Info : 30M x 0.32mm x0.5 Signal #2 Info : 30M x 0.32mm x 0.25µm

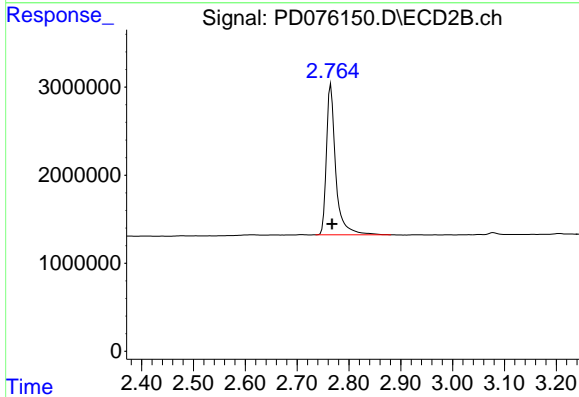




#1 Tetrachloro-m-xylene

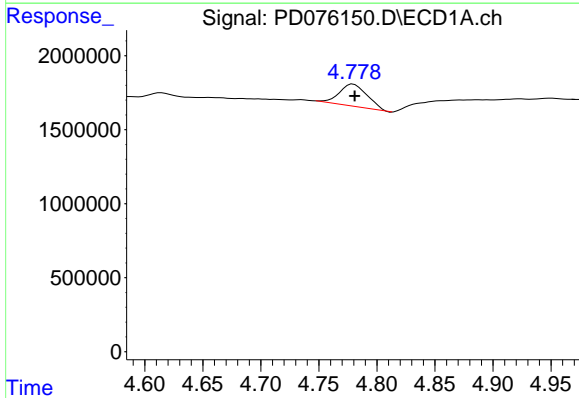
R.T.: 3.551 min
 Delta R.T.: 0.005 min
 Response: 41814633
 Conc: 19.63 ng/ml

Instrument :
 ECD_D
 ClientSampleId :
 PB153790BL



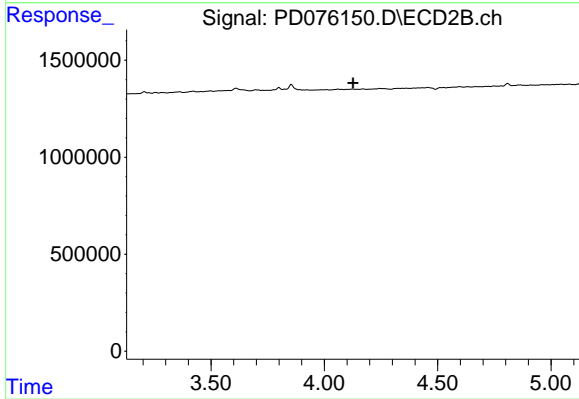
#1 Tetrachloro-m-xylene

R.T.: 2.765 min
 Delta R.T.: -0.002 min
 Response: 21291033
 Conc: 19.62 ng/ml



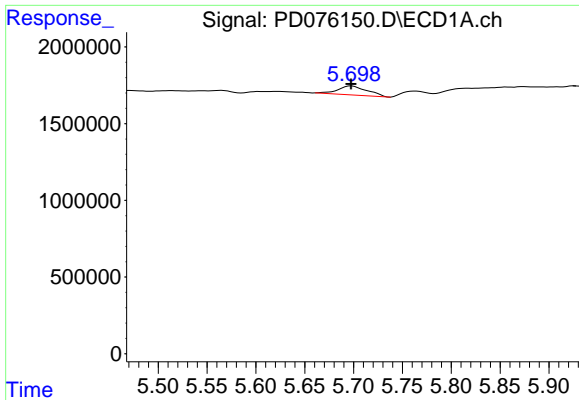
#7 delta-BHC

R.T.: 4.780 min
 Delta R.T.: -0.001 min
 Response: 2510696
 Conc: 0.76 ng/ml



#7 delta-BHC

R.T.: 0.000 min
 Exp R.T. : 4.127 min
 Response: 0
 Conc: N.D.

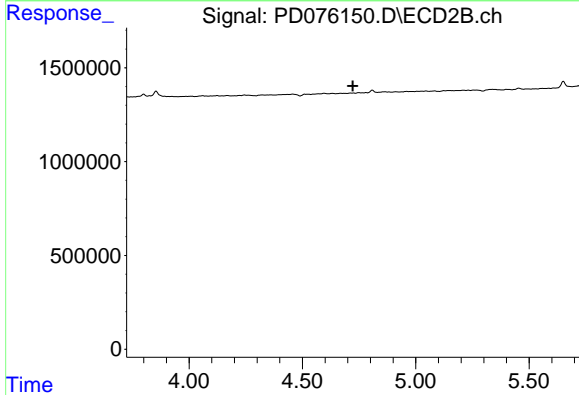


#8 Heptachlor epoxide

R.T.: 5.698 min
 Delta R.T.: 0.000 min
 Response: 1227215
 Conc: 0.38 ng/ml

Instrument :
 ECD_D
 ClientSampleId :
 PB153790BL

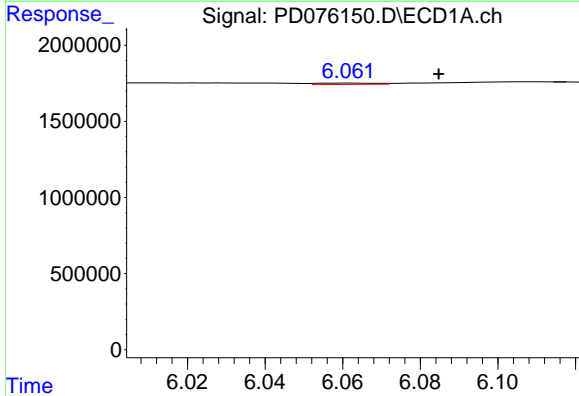
Time 5.50 5.55 5.60 5.65 5.70 5.75 5.80 5.85 5.90



#8 Heptachlor epoxide

R.T.: 0.000 min
 Exp R.T. : 4.723 min
 Response: 0
 Conc: N.D.

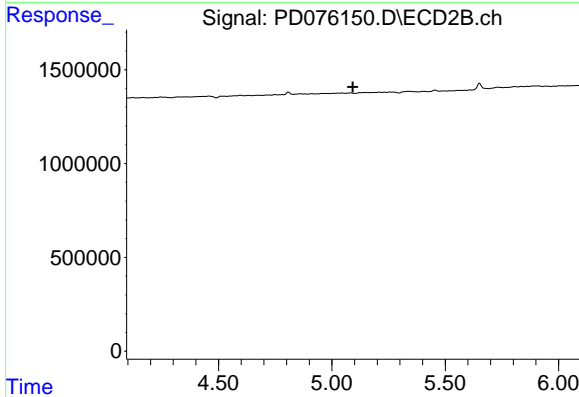
Time 4.00 4.50 5.00 5.50



#9 Endosulfan I

R.T.: 6.062 min
 Delta R.T.: -0.023 min
 Response: 89867
 Conc: 0.03 ng/ml

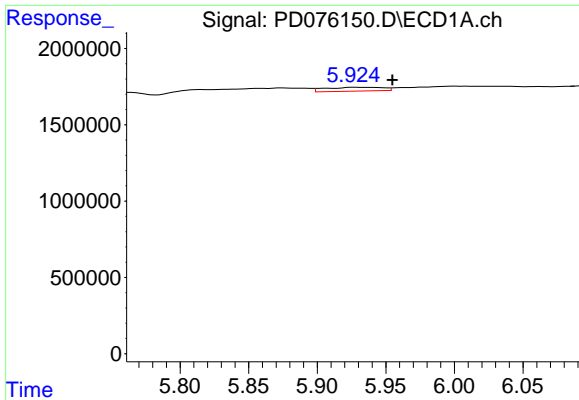
Time 6.02 6.04 6.06 6.08 6.10



#9 Endosulfan I

R.T.: 0.000 min
 Exp R.T. : 5.093 min
 Response: 0
 Conc: N.D.

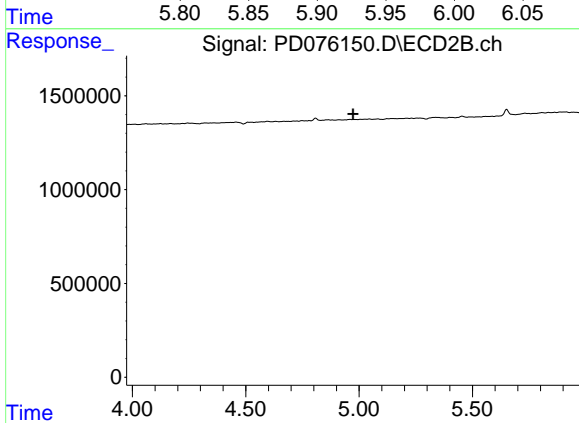
Time 4.50 5.00 5.50 6.00



#10 gamma-Chlordane

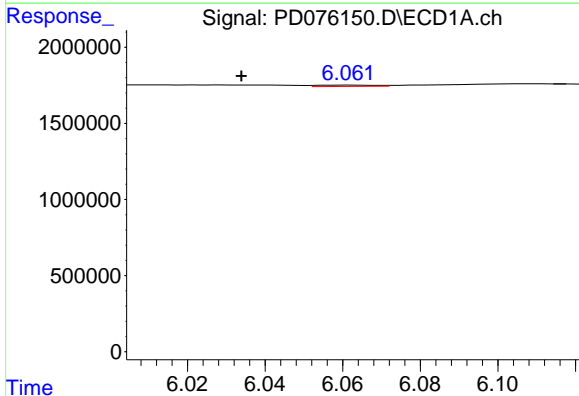
R.T.: 5.926 min
 Delta R.T.: -0.029 min
 Response: 751282
 Conc: 0.23 ng/ml

Instrument :
 ECD_D
 ClientSampleId :
 PB153790BL



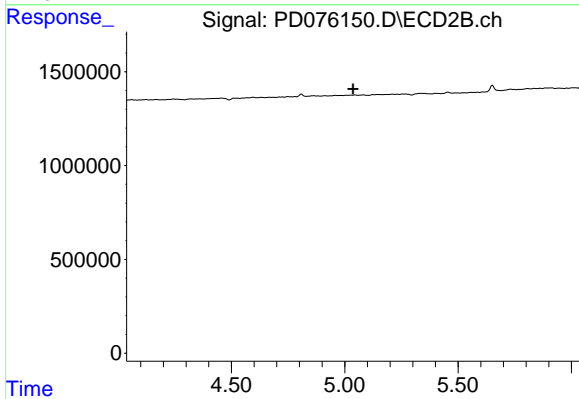
#10 gamma-Chlordane

R.T.: 0.000 min
 Exp R.T. : 4.973 min
 Response: 0
 Conc: N.D.



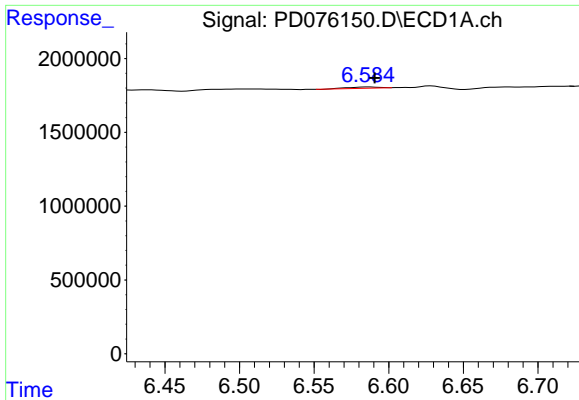
#11 alpha-Chlordane

R.T.: 6.062 min
 Delta R.T.: 0.028 min
 Response: 89867
 Conc: 0.03 ng/ml



#11 alpha-Chlordane

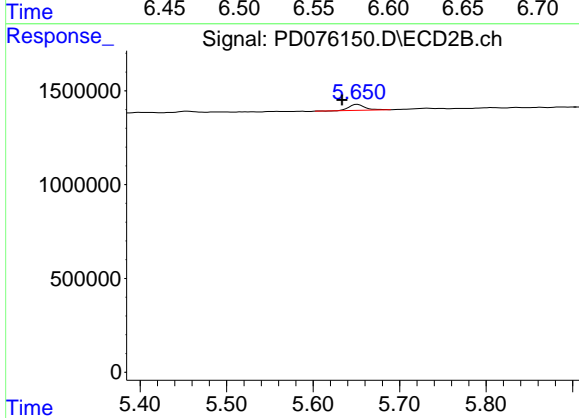
R.T.: 0.000 min
 Exp R.T. : 5.037 min
 Response: 0
 Conc: N.D.



#14 Endrin

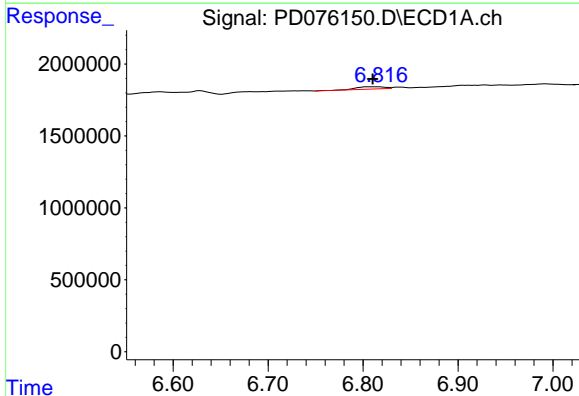
R.T.: 6.586 min
 Delta R.T.: -0.004 min
 Response: 112350
 Conc: 0.04 ng/ml

Instrument :
 ECD_D
 ClientSampleId :
 PB153790BL



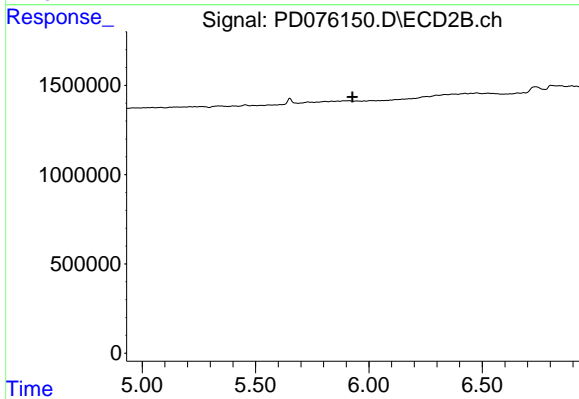
#14 Endrin

R.T.: 5.651 min
 Delta R.T.: 0.018 min
 Response: 408518
 Conc: 0.34 ng/ml



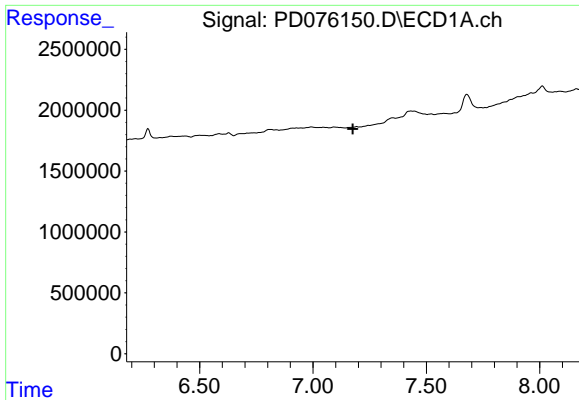
#15 Endosulfan II

R.T.: 6.817 min
 Delta R.T.: 0.007 min
 Response: 347657
 Conc: 0.13 ng/ml



#15 Endosulfan II

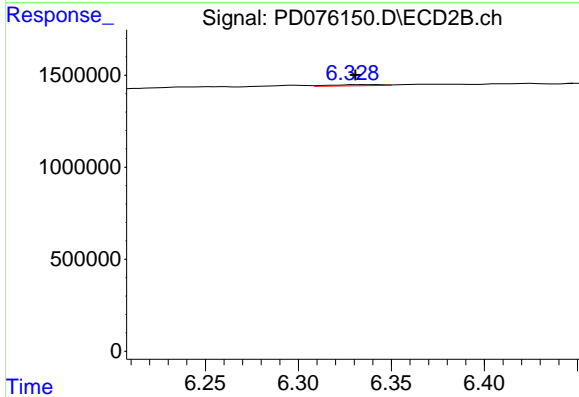
R.T.: 0.000 min
 Exp R.T. : 5.928 min
 Response: 0
 Conc: N.D.



#19 Endosulfan Sulfate

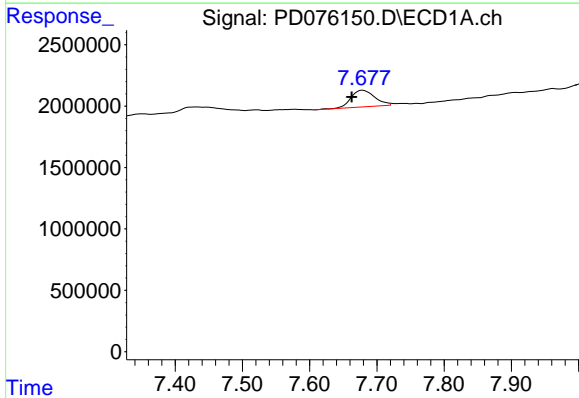
R.T.: 0.000 min
 Exp R.T.: 7.175 min
 Response: 0
 Conc: N.D.

Instrument :
 ECD_D
 ClientSampleId :
 PB153790BL



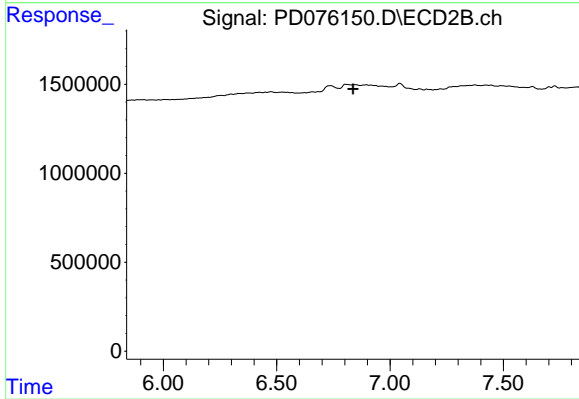
#19 Endosulfan Sulfate

R.T.: 6.342 min
 Delta R.T.: 0.011 min
 Response: 115992
 Conc: 0.11 ng/ml



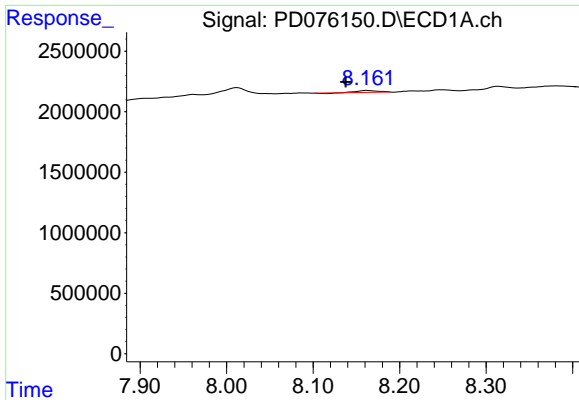
#21 Endrin ketone

R.T.: 7.679 min
 Delta R.T.: 0.016 min
 Response: 3373167
 Conc: 1.21 ng/ml



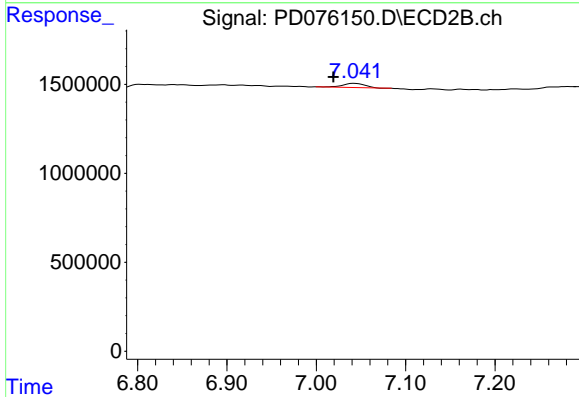
#21 Endrin ketone

R.T.: 0.000 min
 Exp R.T.: 6.837 min
 Response: 0
 Conc: N.D.

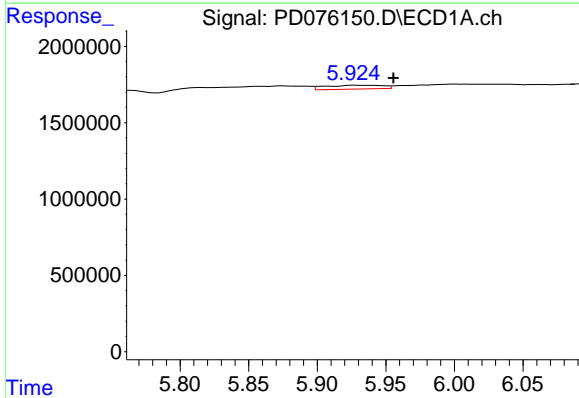


#22 Mirex
 R.T.: 8.162 min
 Delta R.T.: 0.025 min
 Response: 224626
 Conc: 0.10 ng/ml

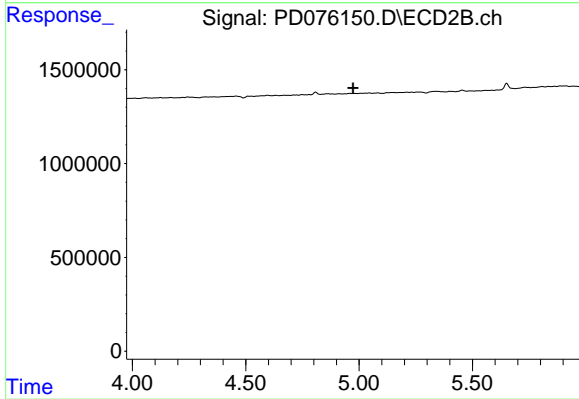
Instrument :
 ECD_D
 ClientSampleId :
 PB153790BL



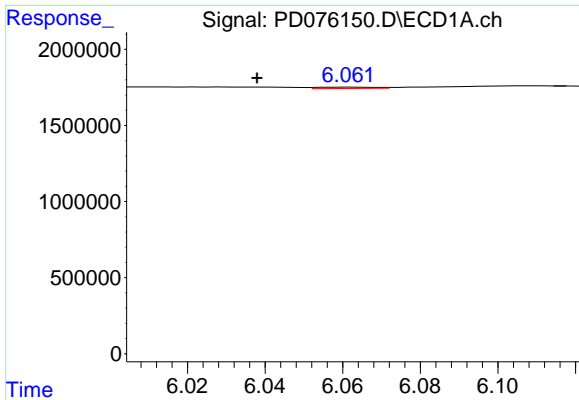
#22 Mirex
 R.T.: 7.043 min
 Delta R.T.: 0.024 min
 Response: 402738
 Conc: 0.38 ng/ml



#25 Chlordane-3
 R.T.: 5.926 min
 Delta R.T.: -0.030 min
 Response: 751282
 Conc: 1.45 ng/ml



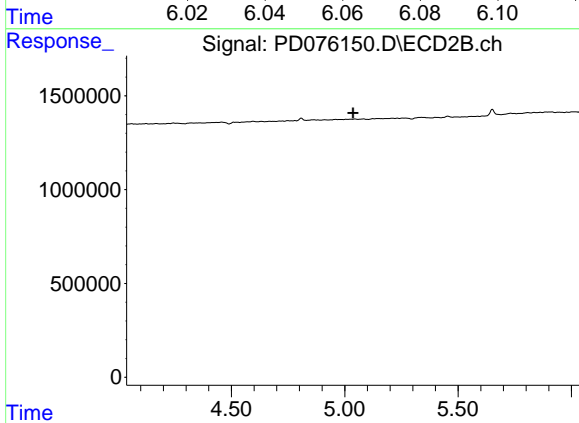
#25 Chlordane-3
 R.T.: 0.000 min
 Exp R.T. : 4.974 min
 Response: 0
 Conc: N.D.



#26 Chlordane-4

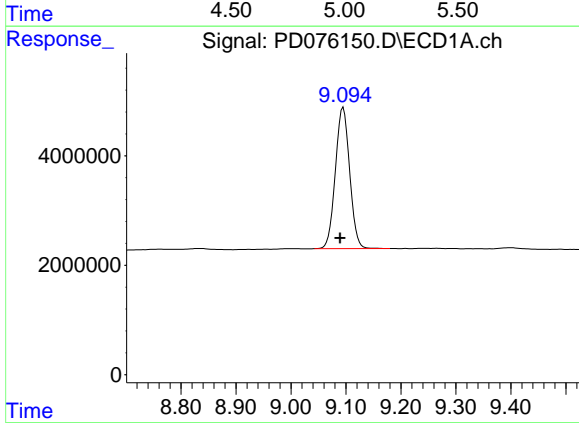
R.T.: 6.062 min
 Delta R.T.: 0.024 min
 Response: 89867
 Conc: 0.14 ng/ml

Instrument :
 ECD_D
 ClientSampleId :
 PB153790BL



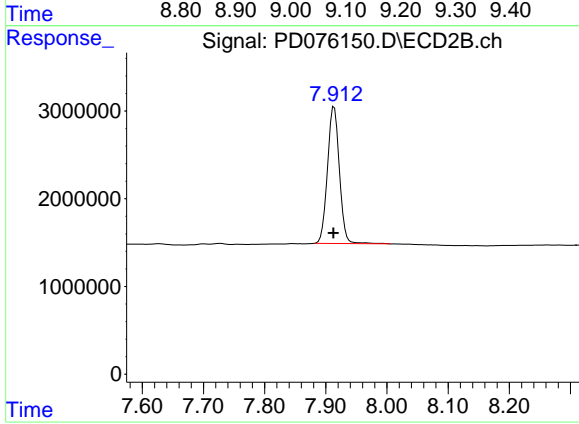
#26 Chlordane-4

R.T.: 0.000 min
 Exp R.T. : 5.037 min
 Response: 0
 Conc: N.D.



#28 Decachlorobiphenyl

R.T.: 9.095 min
 Delta R.T.: 0.006 min
 Response: 46660044
 Conc: 18.42 ng/ml



#28 Decachlorobiphenyl

R.T.: 7.914 min
 Delta R.T.: 0.000 min
 Response: 21183953
 Conc: 21.66 ng/ml