

Data Path : Z:\pestpcbsrv\HPCHEM1\ECD_D\Data\PD062724\
 Data File : PD083833.D
 Signal(s) : Signal #1: ECD1A.ch Signal #2: ECD2B.ch
 Acq On : 27 Jun 2024 14:03
 Operator : AR\AJ
 Sample : PEM129
 Misc :
 ALS Vial : 3 Sample Multiplier: 1

Instrument :
 ECD_D
ClientSampleId :
 PEM044

Manual Integrations
APPROVED
 Reviewed By :Abdul Mirza 06/28/2024
 Supervised By :Ankita Jodhani 06/28/2024

Integration File signal 1: autoint1.e
 Integration File signal 2: autoint2.e
 Quant Time: Jun 27 19:06:46 2024
 Quant Method : Z:\pestpcbsrv\HPCHEM1\ECD_D\Method\PD062724CLP-TCLP.M
 Quant Title : GC Extractables
 QLast Update : Thu Jun 27 19:01:18 2024
 Response via : Initial Calibration
 Integrator: ChemStation

Volume Inj. : 1 µl
 Signal #1 Phase : ZB-MR2 Signal #2 Phase: ZB-MR1
 Signal #1 Info : 30M x 0.32mm x0.2 Signal #2 Info : 30M x 0.32mm x 0.50µm

Compound	RT#1	RT#2	Resp#1	Resp#2	ng/ml	ng/ml

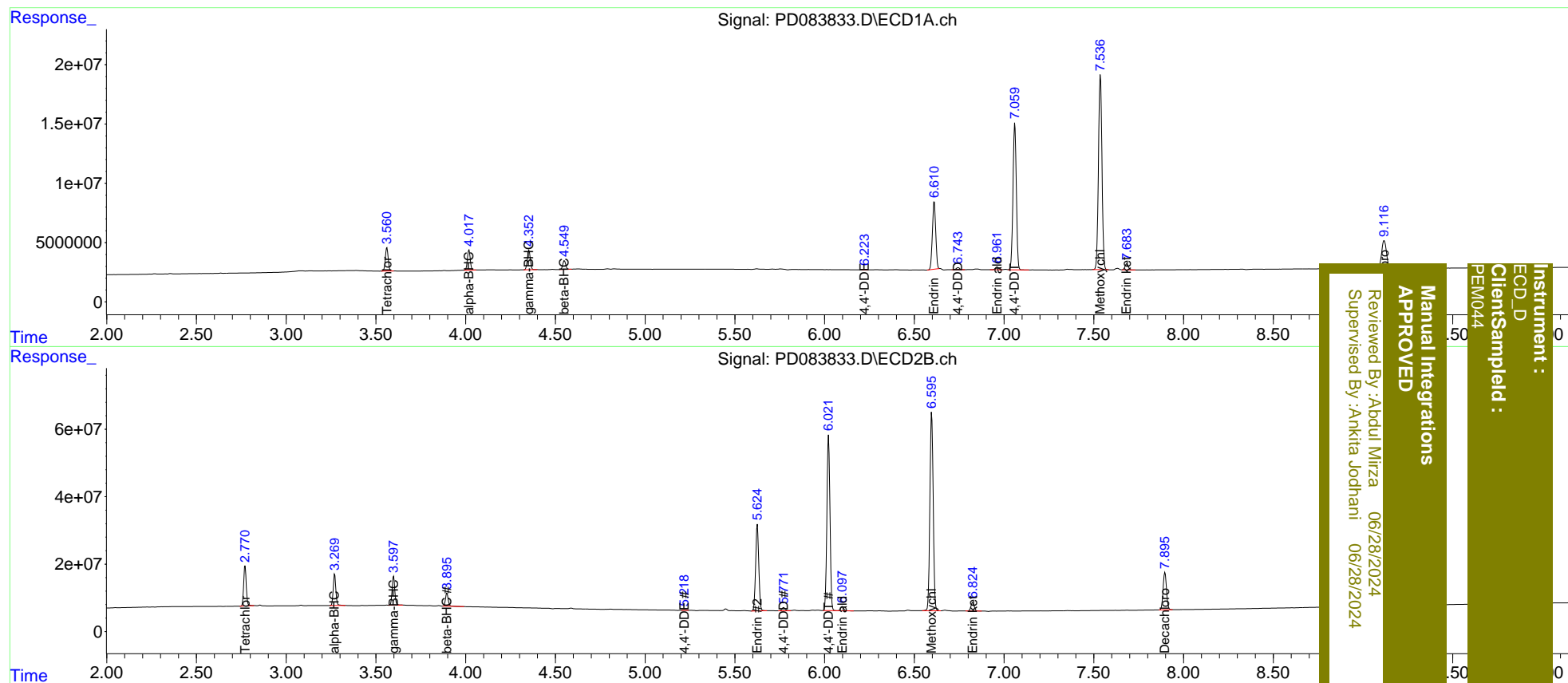
System Monitoring Compounds						
1) SA Tetrachlo...	3.562	2.771	21823072	120.5E6	21.992	21.774
27) SA Decachlor...	9.118	7.897	44600705	145.4E6	21.594	22.369
Target Compounds						
2) A alpha-BHC	4.019	3.270	18755890	95769274	9.822	10.602
3) MA gamma-BHC...	4.353	3.599	18875167	88545475	10.112	10.465
6) B beta-BHC	4.550	3.896	8502854	41498687	10.705	10.847
12) B 4,4'-DDE	6.223	5.218	194158	1139700	0.101m	0.156m#
14) MA Endrin	6.611	5.626	73539167	310.7E6	47.358	50.128
16) A 4,4'-DDD	6.744	5.772	2297264	12273042	1.568	2.046 #
17) MA 4,4'-DDT	7.060	6.022	160.1E6	625.0E6	108.130	109.389
18) B Endrin al...	6.962	6.099	3049202	15168681	2.321	3.151 #
20) A Methoxychlor	7.537	6.597	223.4E6	750.4E6	265.823	274.723
21) B Endrin ke...	7.684	6.826	6668241	31610751	3.532	4.720 #

(f)=RT Delta > 1/2 Window (#)=Amounts differ by > 25% (m)=manual int.

Data Path : Z:\pestpcbsrv\HPCHEM1\ECD_D\Data\PD062724\
 Data File : PD083833.D
 Signal(s) : Signal #1: ECD1A.ch Signal #2: ECD2B.ch
 Acq On : 27 Jun 2024 14:03
 Operator : AR\AJ
 Sample : PEM129
 Misc :
 ALS Vial : 3 Sample Multiplier: 1

Integration File signal 1: autoint1.e
 Integration File signal 2: autoint2.e
 Quant Time: Jun 27 19:06:46 2024
 Quant Method : Z:\pestpcbsrv\HPCHEM1\ECD_D\Method\PD062724CLP-TCLP.M
 Quant Title : GC Extractables
 QLast Update : Thu Jun 27 19:01:18 2024
 Response via : Initial Calibration
 Integrator: ChemStation

Volume Inj. : 1 µl
 Signal #1 Phase : ZB-MR2 Signal #2 Phase: ZB-MR1
 Signal #1 Info : 30M x 0.32mm x0.2 Signal #2 Info : 30M x 0.32mm x 0.50µm



Instrument : ECD_D
 Client/Sample : PEM044
 Manual Integrations APPROVED
 Reviewed By : Aboul Mirza 06/28/2024
 Supervised By : Ankita Jodhani 06/28/2024