

Data Path : Z:\pestpcbsrv\HPCHEM1\ECD_D\Data\PD062918\
Data File : PD048242.D
Signal(s) : Signal #1: ECD1A.CH Signal #2: ECD2B.CH
Acq On : 29 Jun 2018 8:07
Operator : UA/AJ
Sample : HEXANE
Misc :
ALS Vial : 1 Sample Multiplier: 1

Instrument :
ECD_D
ClientSampleId :
HEXANE

Integration File signal 1: autoint1.e
Integration File signal 2: autoint2.e
Quant Time: Jun 29 22:47:02 2018
Quant Method : Z:\PESTPCBSRV\HPCHEM1\ECD_D\Method\PD062818CLP.M
Quant Title : GC Extractables
QLast Update : Fri Jun 29 16:27:50 2018
Response via : Initial Calibration
Integrator: ChemStation 6890 Scale Mode: Large solvent peaks clipped

Volume Inj. : 1 µl
Signal #1 Phase : ZB-MR2 Signal #2 Phase: ZB-MR1
Signal #1 Info : 30M x 0.32mm x0.2 Signal #2 Info : 30M x 0.32mm x 0.50µm

Compound	RT#1	RT#2	Resp#1	Resp#2	ng/ml	ng/ml
----------	------	------	--------	--------	-------	-------

System Monitoring Compounds

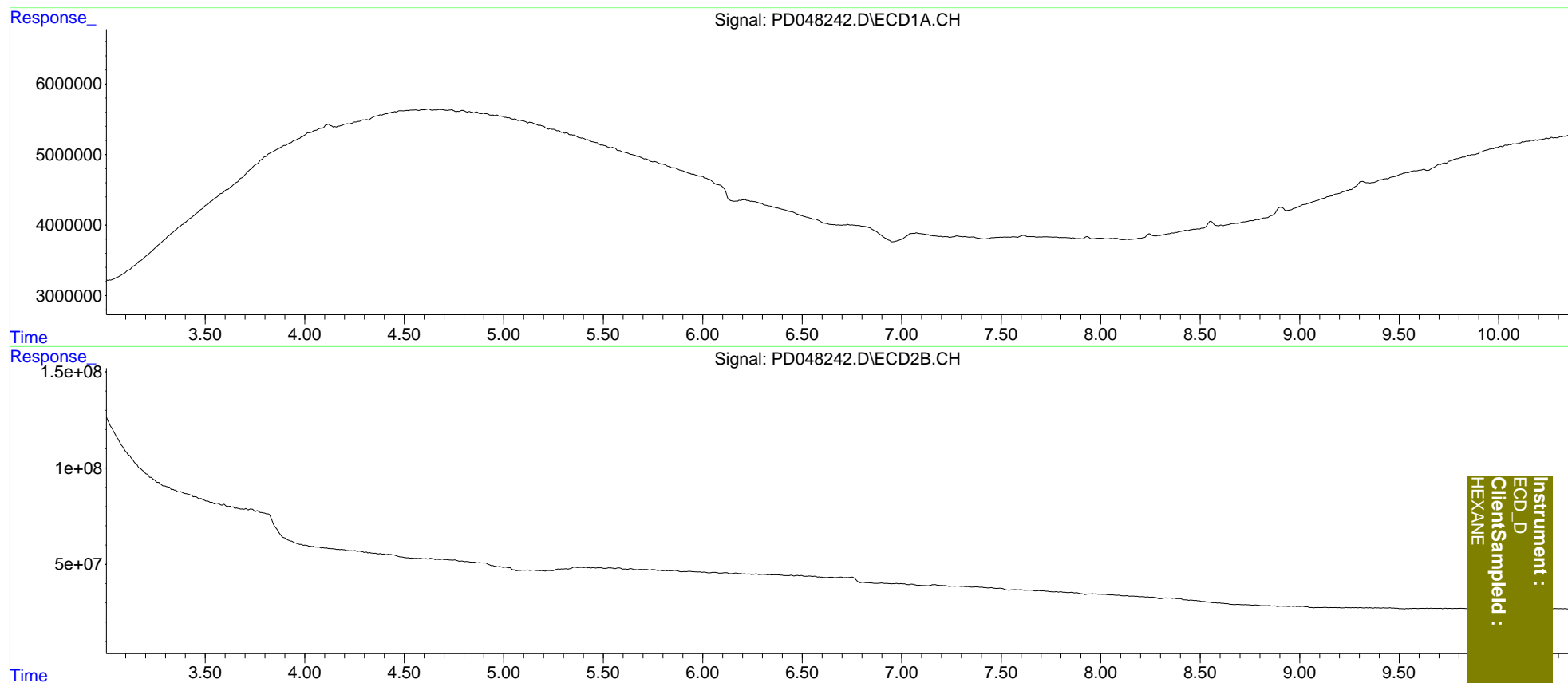
Target Compounds

(f)=RT Delta > 1/2 Window (#)=Amounts differ by > 25% (m)=manual int.

Data Path : Z:\pestpcbsrv\HPCHEM1\ECD_D\Data\PD062918\
Data File : PD048242.D
Signal(s) : Signal #1: ECD1A.CH Signal #2: ECD2B.CH
Acq On : 29 Jun 2018 8:07
Operator : UA/AJ
Sample : HEXANE
Misc :
ALS Vial : 1 Sample Multiplier: 1

Integration File signal 1: autoint1.e
Integration File signal 2: autoint2.e
Quant Time: Jun 29 22:47:02 2018
Quant Method : Z:\PESTPCBSRV\HPCHEM1\ECD_D\Method\PD062818CLP.M
Quant Title : GC Extractables
QLast Update : Fri Jun 29 16:27:50 2018
Response via : Initial Calibration
Integrator: ChemStation 6890 Scale Mode: Large solvent peaks clipped

Volume Inj. : 1 μ l
Signal #1 Phase : ZB-MR2 Signal #2 Phase: ZB-MR1
Signal #1 Info : 30M x 0.32mm x 0.2 Signal #2 Info : 30M x 0.32mm x 0.50 μ m



Instrument :
ECD_D
ClientSampleId :
HEXANE