

Data Path : Z:\pestpcbsrv\HPCHEM1\ECD_D\Data\PD062918\
 Data File : PD048245.D
 Signal(s) : Signal #1: ECD1A.CH Signal #2: ECD2B.CH
 Acq On : 29 Jun 2018 9:26
 Operator : UA/AJ
 Sample : J3661-04
 Misc :
 ALS Vial : 6 Sample Multiplier: 1

Instrument :
 ECD_D
 ClientSampleId :
 X2D22

Integration File signal 1: autoint1.e
 Integration File signal 2: autoint2.e
 Quant Time: Jun 29 22:47:40 2018
 Quant Method : Z:\PESTPCBSRV\HPCHEM1\ECD_D\Method\PD062818CLP.M
 Quant Title : GC Extractables
 QLast Update : Fri Jun 29 16:27:50 2018
 Response via : Initial Calibration
 Integrator: ChemStation 6890 Scale Mode: Large solvent peaks clipped

Volume Inj. : 1 µl
 Signal #1 Phase : ZB-MR2 Signal #2 Phase: ZB-MR1
 Signal #1 Info : 30M x 0.32mm x0.2 Signal #2 Info : 30M x 0.32mm x 0.50µm

Compound	RT#1	RT#2	Resp#1	Resp#2	ng/ml	ng/ml

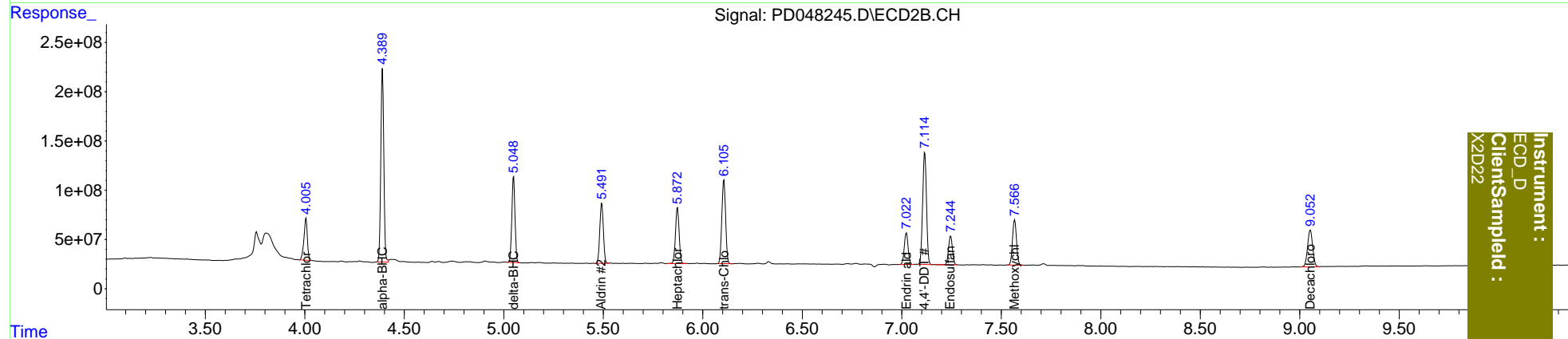
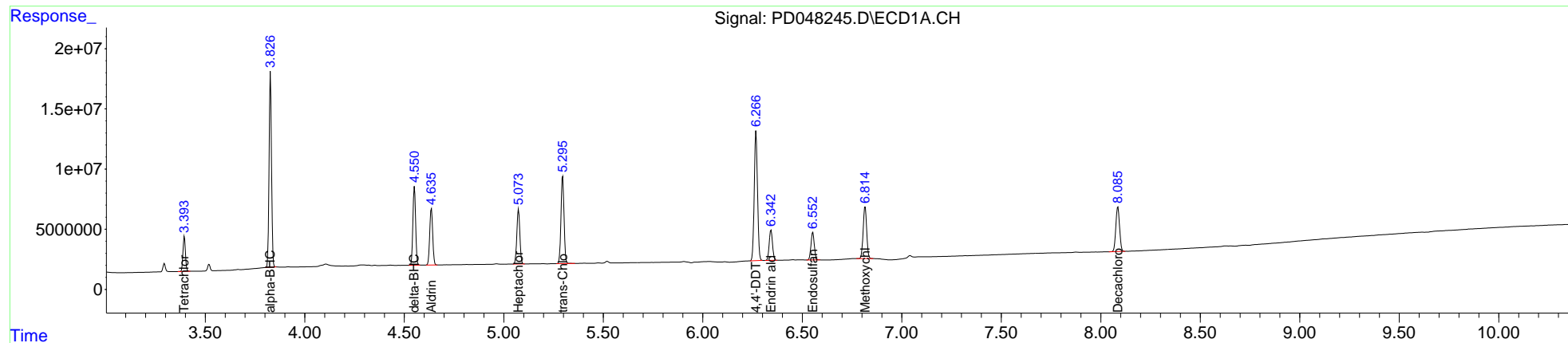
System Monitoring Compounds						
1) SA Tetrachlo...	3.395	4.006	25198245	510.7E6	20.853	25.086
2) SA Decachlor...	8.086	9.053	48007503	659.7E6	35.912	37.230
Target Compounds						
2) A alpha-BHC	3.828	4.391	138.7E6	2056.4E6	72.906	63.980
5) MB Aldrin	4.636	5.492	48788134	759.1E6	28.350	27.270
7) B delta-BHC	4.551	5.049	62170407	967.9E6	33.544	31.424
8) B Heptachlo...	5.074	5.873	47549839	724.7E6	29.656	28.231
10) B trans-Chl...	5.296	6.106	77736843	1111.3E6	47.970	42.929
17) MA 4,4'-DDT	6.268	7.116	123.1E6	1520.9E6	85.026	79.325
18) B Endrin al...	6.343	7.023	28961242	430.9E6	23.560	24.518
19) B Endosulfa...	6.553	7.246	27036080	397.2E6	19.458	19.726
20) A Methoxychlor	6.816	7.567	52844754	642.6E6	69.839	75.889

(f)=RT Delta > 1/2 Window (#)=Amounts differ by > 25% (m)=manual int.

Data Path : Z:\pestpcbsrv\HPCHEM1\ECD_D\Data\PD062918\
 Data File : PD048245.D
 Signal(s) : Signal #1: ECD1A.CH Signal #2: ECD2B.CH
 Acq On : 29 Jun 2018 9:26
 Operator : UA/AJ
 Sample : J3661-04
 Misc :
 ALS Vial : 6 Sample Multiplier: 1

Integration File signal 1: autoint1.e
 Integration File signal 2: autoint2.e
 Quant Time: Jun 29 22:47:40 2018
 Quant Method : Z:\PESTPCBSRV\HPCHEM1\ECD_D\Method\PD062818CLP.M
 Quant Title : GC Extractables
 QLast Update : Fri Jun 29 16:27:50 2018
 Response via : Initial Calibration
 Integrator: ChemStation 6890 Scale Mode: Large solvent peaks clipped

Volume Inj. : 1 µl
 Signal #1 Phase : ZB-MR2 Signal #2 Phase: ZB-MR1
 Signal #1 Info : 30M x 0.32mm x0.2 Signal #2 Info : 30M x 0.32mm x 0.50µm



Instrument :
 ECD_D
 ClientSampleId :
 X2D22