

Data Path : Z:\pestpcbsrv\HPCHEM1\ECD_D\Data\PD062918\
 Data File : PD048247.D
 Signal(s) : Signal #1: ECD1A.CH Signal #2: ECD2B.CH
 Acq On : 29 Jun 2018 9:53
 Operator : UA/AJ
 Sample : PB110706BS
 Misc :
 ALS Vial : 8 Sample Multiplier: 1

Instrument :
 ECD_D
 ClientSampled :
 PLCS06

Manual Integrations
 APPROVED

mohammad
 7/2/2018 11:16:29 AM

Integration File signal 1: autoint1.e
 Integration File signal 2: autoint2.e
 Quant Time: Jun 29 22:48:08 2018
 Quant Method : Z:\PESTPCBSRV\HPCHEM1\ECD_D\Method\PD062818CLP.M
 Quant Title : GC Extractables
 QLast Update : Fri Jun 29 16:27:50 2018
 Response via : Initial Calibration
 Integrator: ChemStation 6890 Scale Mode: Large solvent peaks clipped

Volume Inj. : 1 µl
 Signal #1 Phase : ZB-MR1 Signal #2 Phase: ZB-MR1
 Signal #1 Info : 30M x 0.32mm x0.2 Signal #2 Info : 30M x 0.32mm x 0.50µm

Compound	RT#1	RT#2	Resp#1	Resp#2	ng/ml	ng/ml

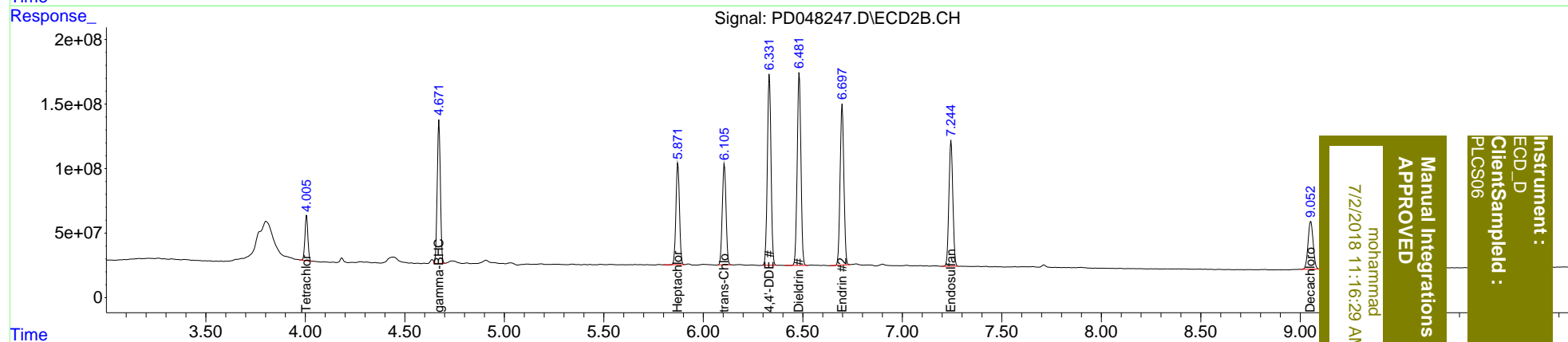
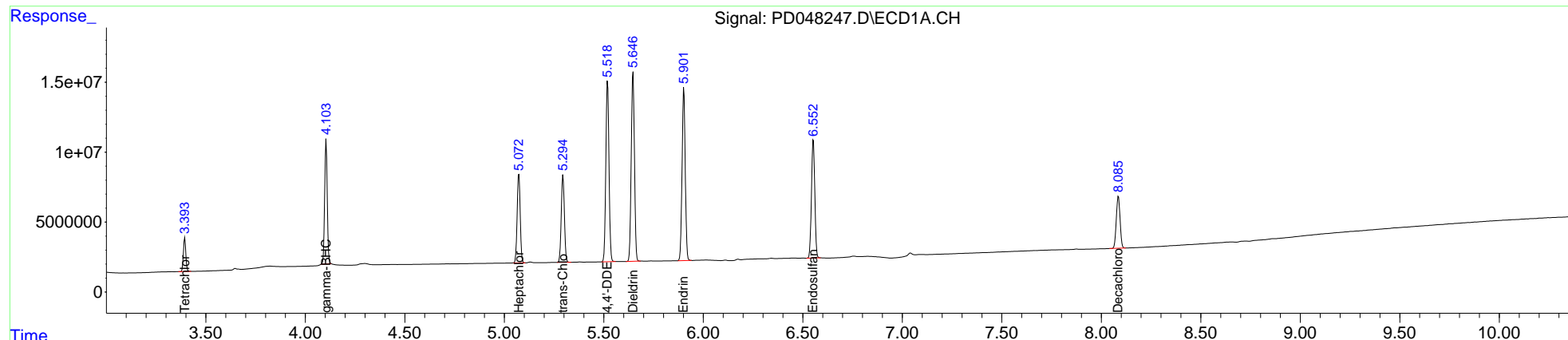
System Monitoring Compounds						
1) SA Tetrachlo...	3.395	4.007	20889996	364.0E6	17.287	17.881
27) SA Decachlor...	8.086	9.053	48622376	658.2E6	36.372	37.144
Target Compounds						
3) MA gamma-BHC...	4.105	4.670	80660529	1210.2E6	43.015	41.719m
8) B Heptachlo...	5.073	5.873	67877090	976.3E6	42.334	38.035
10) B trans-Chl...	5.295	6.106	68578651	1012.7E6	42.319	39.120
12) B 4,4'-DDE	5.519	6.332	141.9E6	1884.9E6	85.062	78.863
13) MA Dieldrin	5.647	6.483	150.0E6	1945.7E6	86.767	80.630
14) MA Endrin	5.902	6.698	137.3E6	1645.6E6	91.190	83.326
19) B Endosulfa...	6.553	7.245	99464703	1337.6E6	71.586	66.418

(f)=RT Delta > 1/2 Window (#)=Amounts differ by > 25% (m)=manual int.

Data Path : Z:\pestpcbsrv\HPCHEM1\ECD_D\Data\PD062918\
 Data File : PD048247.D
 Signal(s) : Signal #1: ECD1A.CH Signal #2: ECD2B.CH
 Acq On : 29 Jun 2018 9:53
 Operator : UA/AJ
 Sample : PB110706BS
 Misc :
 ALS Vial : 8 Sample Multiplier: 1

Integration File signal 1: autoint1.e
 Integration File signal 2: autoint2.e
 Quant Time: Jun 29 22:48:08 2018
 Quant Method : Z:\PESTPCBSRV\HPCHEM1\ECD_D\Method\PD062818CLP.M
 Quant Title : GC Extractables
 QLast Update : Fri Jun 29 16:27:50 2018
 Response via : Initial Calibration
 Integrator: ChemStation 6890 Scale Mode: Large solvent peaks clipped

Volume Inj. : 1 µl
 Signal #1 Phase : ZB-MR2 Signal #2 Phase: ZB-MR1
 Signal #1 Info : 30M x 0.32mm x0.2 Signal #2 Info : 30M x 0.32mm x 0.50µm



Instrument : ECD_D
 Client Sample Id : PLCS06
 mohammad
 7/2/2018 11:16:29 AM
 Manual Integrations
 APPROVED