

Data Path : Z:\pestpcbsrv\HPCHEM1\ECD_D\Data\PD062918\
 Data File : PD048251.D
 Signal(s) : Signal #1: ECD1A.CH Signal #2: ECD2B.CH
 Acq On : 29 Jun 2018 11:18
 Operator : UA/AJ
 Sample : J3704-07
 Misc :
 ALS Vial : 12 Sample Multiplier: 1

Instrument :
 ECD_D
 ClientSampleId :
 PEST-GPC-BLANK-SPIKE

Integration File signal 1: autoint1.e
 Integration File signal 2: autoint2.e
 Quant Time: Jun 29 22:49:04 2018
 Quant Method : Z:\PESTPCBSRV\HPCHEM1\ECD_D\Method\PD062818CLP.M
 Quant Title : GC Extractables
 QLast Update : Fri Jun 29 16:27:50 2018
 Response via : Initial Calibration
 Integrator: ChemStation 6890 Scale Mode: Large solvent peaks clipped

Volume Inj. : 1 µl
 Signal #1 Phase : ZB-MR2 Signal #2 Phase: ZB-MR1
 Signal #1 Info : 30M x 0.32mm x0.2 Signal #2 Info : 30M x 0.32mm x 0.50µm

Compound	RT#1	RT#2	Resp#1	Resp#2	ng/ml	ng/ml

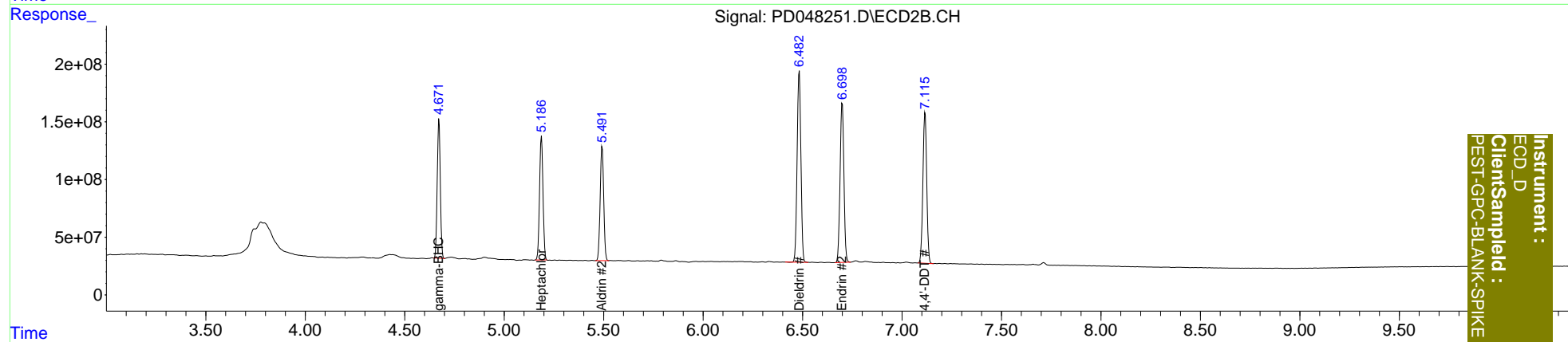
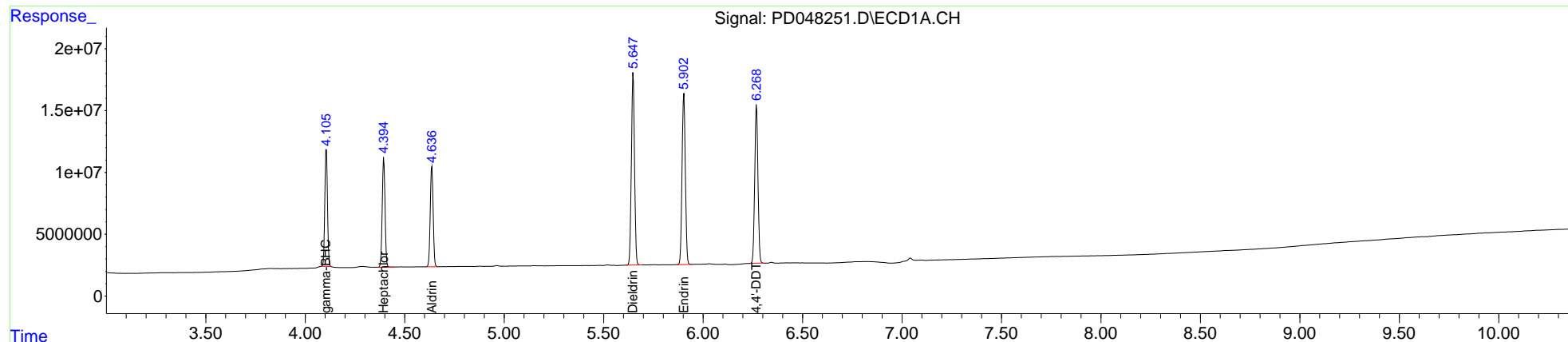
System Monitoring Compounds						
Target Compounds						
3) MA gamma-BHC...	4.106	4.673	87992210	1299.6E6	46.925	44.802
4) MA Heptachlor	4.395	5.188	87144340	1281.7E6	49.255	44.302
5) MB Aldrin	4.637	5.493	82817921	1215.7E6	48.125	43.673
13) MA Dieldrin	5.649	6.484	171.5E6	2172.9E6	99.185	90.043
14) MA Endrin	5.904	6.700	157.6E6	1854.4E6	104.700	93.898
17) MA 4,4'-DDT	6.269	7.116	145.4E6	1751.1E6	100.417	91.333

(f)=RT Delta > 1/2 Window (#)=Amounts differ by > 25% (m)=manual int.

Data Path : Z:\pestpcbsrv\HPCHEM1\ECD_D\Data\PD062918\
 Data File : PD048251.D
 Signal(s) : Signal #1: ECD1A.CH Signal #2: ECD2B.CH
 Acq On : 29 Jun 2018 11:18
 Operator : UA/AJ
 Sample : J3704-07
 Misc :
 ALS Vial : 12 Sample Multiplier: 1

Integration File signal 1: autoint1.e
 Integration File signal 2: autoint2.e
 Quant Time: Jun 29 22:49:04 2018
 Quant Method : Z:\PESTPCBSRV\HPCHEM1\ECD_D\Method\PD062818CLP.M
 Quant Title : GC Extractables
 QLast Update : Fri Jun 29 16:27:50 2018
 Response via : Initial Calibration
 Integrator: ChemStation 6890 Scale Mode: Large solvent peaks clipped

Volume Inj. : 1 µl
 Signal #1 Phase : ZB-MR2 Signal #2 Phase: ZB-MR1
 Signal #1 Info : 30M x 0.32mm x0.2 Signal #2 Info : 30M x 0.32mm x 0.50µm



Instrument :
 ECD_D
 ClientSampleId :
 PEST-GPC-BLANK-SPIKE