

Data Path : Z:\pestpcbsrv\HPCHEM1\ECD\_D\Data\PD062921\  
 Data File : PD064022.D  
 Signal(s) : Signal #1: ECD1A.ch Signal #2: ECD2B.ch  
 Acq On : 29 Jun 2021 20:42  
 Operator : AR\AJ  
 Sample : M2808-07  
 Misc :  
 ALS Vial : 21 Sample Multiplier: 1

Instrument :  
 ECD\_D  
 ClientSampleId :

Integration File signal 1: autoint1.e  
 Integration File signal 2: autoint2.e  
 Quant Time: Jun 30 04:04:01 2021  
 Quant Method : Z:\pestpcbsrv\HPCHEM1\ECD\_D\Method\PD061421CLP.M  
 Quant Title : GC Extractables  
 QLast Update : Mon Jun 21 04:24:00 2021  
 Response via : Initial Calibration  
 Integrator: ChemStation

Volume Inj. : 1 µl  
 Signal #1 Phase : ZB-MR2 Signal #2 Phase: ZB-MR1  
 Signal #1 Info : 30M x 0.32mm x0.2 Signal #2 Info : 30M x 0.32mm x 0.50µm

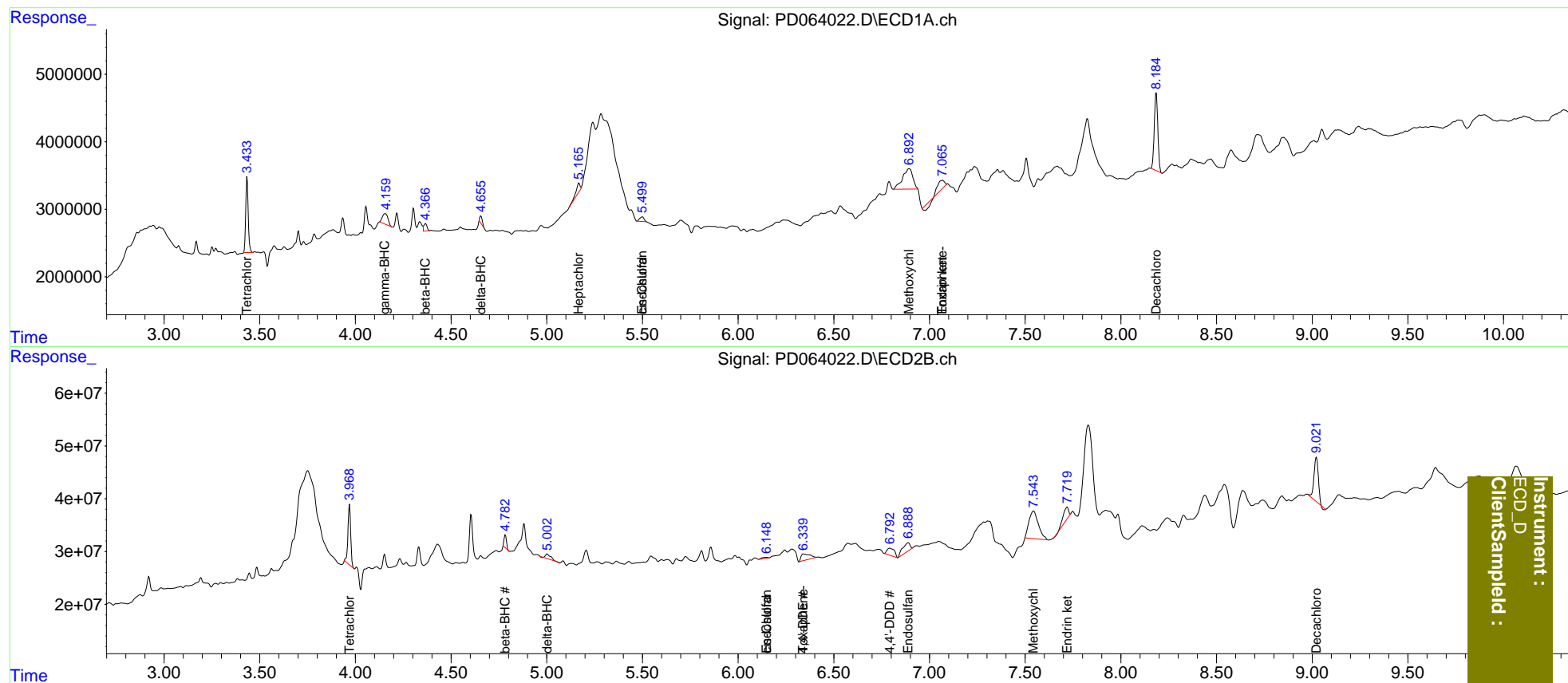
	Compound	RT#1	RT#2	Resp#1	Resp#2	ng/ml	ng/ml
-----							
System Monitoring Compounds							
1)	SA Tetrachlo...	3.434	3.969	10120555	112.9E6	6.510	7.131
2)	SA Decachlor...	8.185	9.022	14863998	127.3E6	8.587	9.181
Target Compounds							
3)	MA gamma-BHC...	4.155	4.655	3140693	-2193756	1.380	N.D. #
6)	B beta-BHC	4.367f	4.784f	1296219	21144981	1.335	2.168 #
7)	B delta-BHC	4.655f	5.003f	868348	15172744	0.402	0.648 #
8)	B Heptachlo...	5.168	0.000	1903902	0	1.004	N.D. #
9)	A Endosulfan I	5.500	6.149f	821279	4303395	0.449	0.217 #
11)	B cis-Chlor...	5.500f	6.149	821279	4303395	0.432	0.214 #
12)	B 4,4'-DDE	0.000	6.341f	0	38194992	N.D.	1.890
13)	MA Dieldrin	5.782f	0.000	59522	0	<MDL	N.D. #
15)	B Endosulfa...	6.208f	6.890	-1400862	44998096	N.D.	2.781
16)	A 4,4'-DDD	0.000	6.792	0	36023094	N.D.	2.140
20)	A Methoxychlor	6.893	7.544	11317607	178.5E6	12.276	23.068 #
21)	B Endrin ke...	7.068f	7.720	1654275	44801888	0.872	2.823 #
22)	Toxaphene-1	0.000	6.341	0	38194992	N.D.	438.158
26)	Toxaphene-5	7.068	0.000	1654275	0	46.426	N.D. #

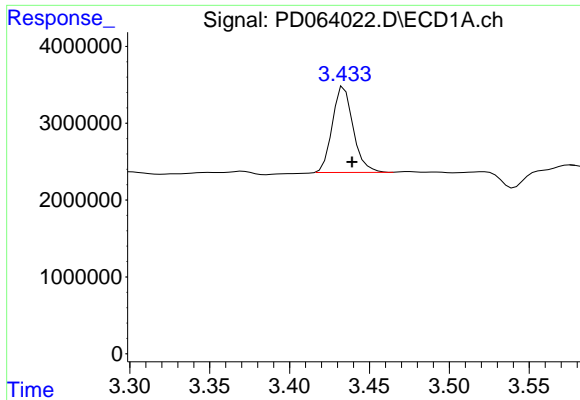
(f)=RT Delta > 1/2 Window (#)=Amounts differ by > 25% (m)=manual int.

Data Path : Z:\pestpcbsrv\HPCHEM1\ECD\_D\Data\PD062921\  
 Data File : PD064022.D  
 Signal(s) : Signal #1: ECD1A.ch Signal #2: ECD2B.ch  
 Acq On : 29 Jun 2021 20:42  
 Operator : AR\AJ  
 Sample : M2808-07  
 Misc :  
 ALS Vial : 21 Sample Multiplier: 1

Integration File signal 1: autoint1.e  
 Integration File signal 2: autoint2.e  
 Quant Time: Jun 30 04:04:01 2021  
 Quant Method : Z:\pestpcbsrv\HPCHEM1\ECD\_D\Method\PD061421CLP.M  
 Quant Title : GC Extractables  
 QLast Update : Mon Jun 21 04:24:00 2021  
 Response via : Initial Calibration  
 Integrator: ChemStation

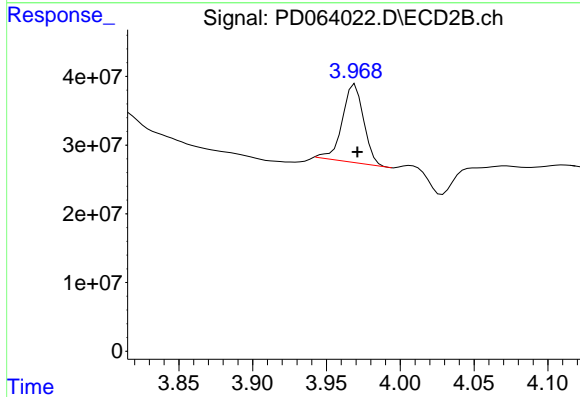
Volume Inj. : 1 µl  
 Signal #1 Phase : ZB-MR2 Signal #2 Phase: ZB-MR1  
 Signal #1 Info : 30M x 0.32mm x0.2 Signal #2 Info : 30M x 0.32mm x 0.50µm



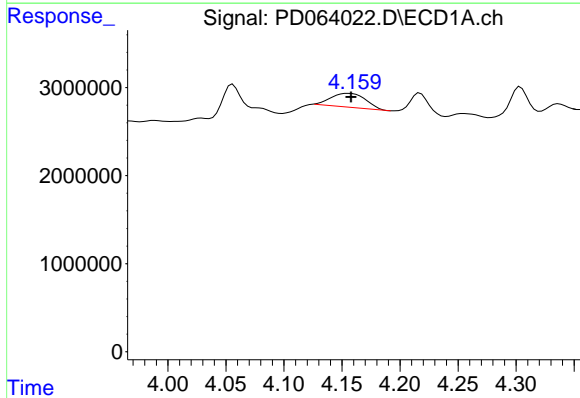


#1 Tetrachloro-m-xylene  
 R.T.: 3.434 min  
 Delta R.T.: -0.005 min  
 Response: 10120555  
 Conc: 6.51 ng/ml

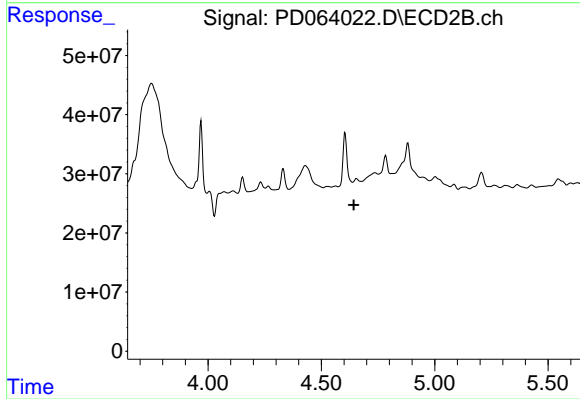
Instrument :  
 ECD\_D  
 ClientSampled :



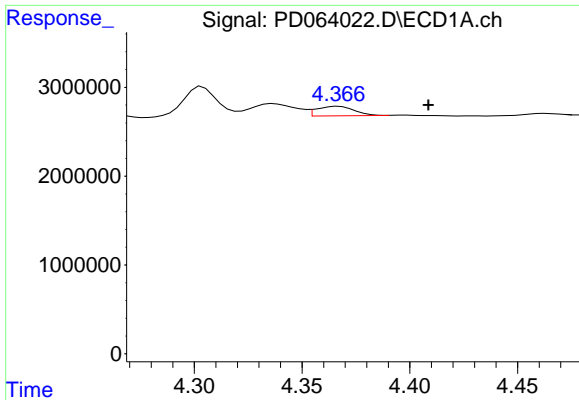
#1 Tetrachloro-m-xylene  
 R.T.: 3.969 min  
 Delta R.T.: -0.001 min  
 Response: 112940186  
 Conc: 7.13 ng/ml



#3 gamma-BHC (Lindane)  
 R.T.: 4.155 min  
 Delta R.T.: -0.002 min  
 Response: 3140693  
 Conc: 1.38 ng/ml

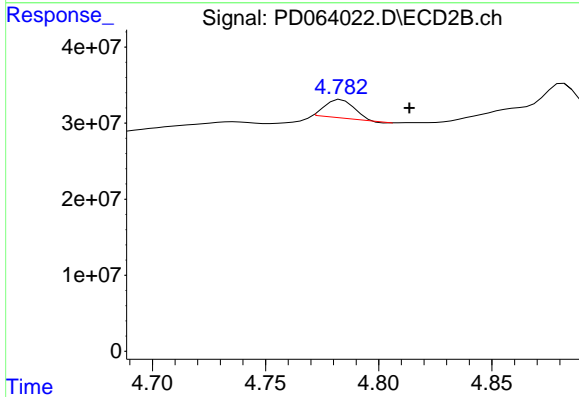


#3 gamma-BHC (Lindane)  
 R.T.: 4.655 min  
 Delta R.T.: 0.011 min  
 Response: -2193756  
 Conc: N.D.

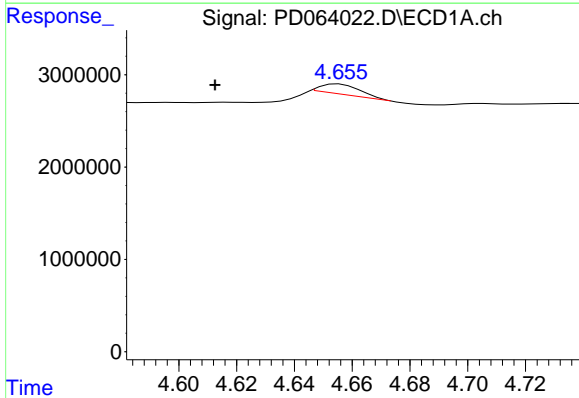


#6 beta-BHC  
 R.T.: 4.367 min  
 Delta R.T.: -0.042 min  
 Response: 1296219  
 Conc: 1.33 ng/ml

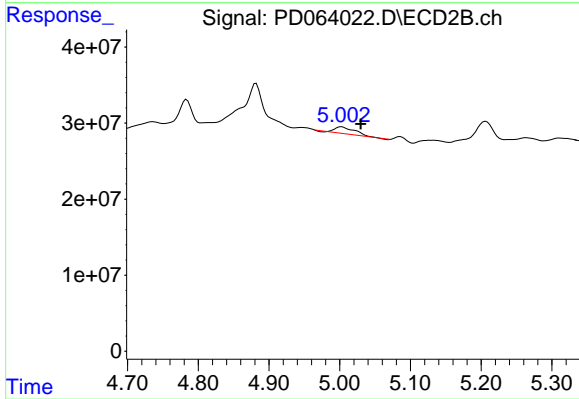
Instrument :  
 ECD\_D  
 ClientSampleId :



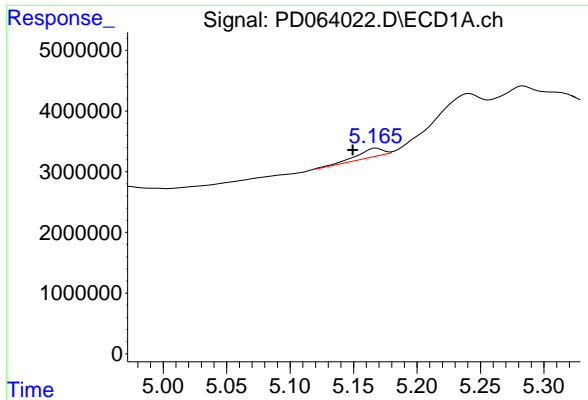
#6 beta-BHC  
 R.T.: 4.784 min  
 Delta R.T.: -0.030 min  
 Response: 21144981  
 Conc: 2.17 ng/ml



#7 delta-BHC  
 R.T.: 4.655 min  
 Delta R.T.: 0.043 min  
 Response: 868348  
 Conc: 0.40 ng/ml

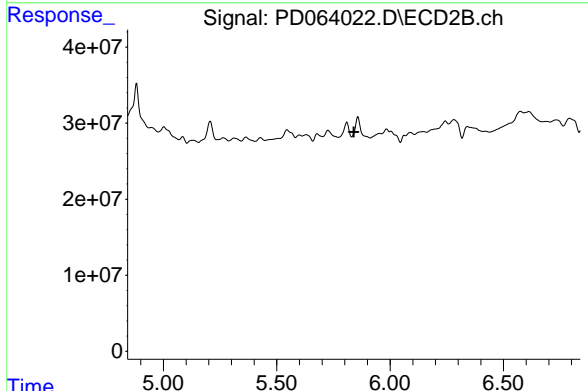


#7 delta-BHC  
 R.T.: 5.003 min  
 Delta R.T.: -0.027 min  
 Response: 15172744  
 Conc: 0.65 ng/ml

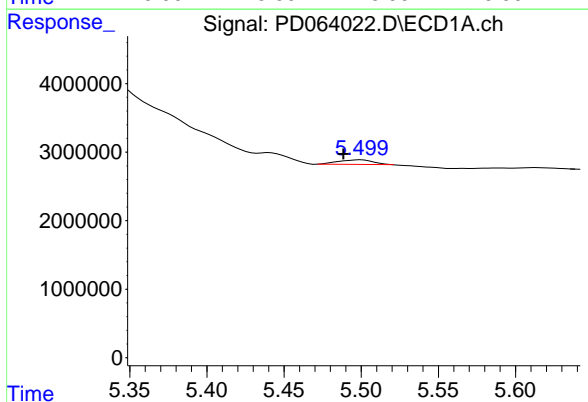


#8 Heptachlor epoxide  
 R.T.: 5.168 min  
 Delta R.T.: 0.019 min  
 Response: 1903902  
 Conc: 1.00 ng/ml

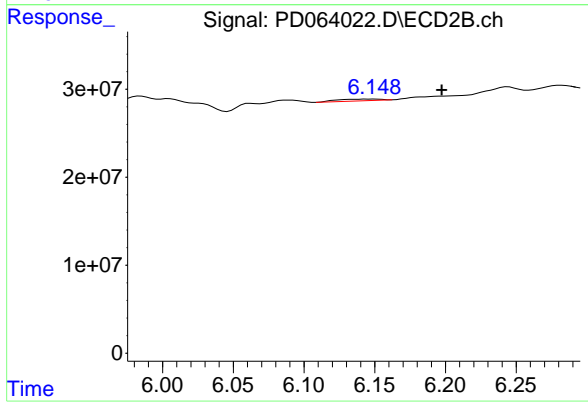
Instrument :  
 ECD\_D  
 ClientSampleId :



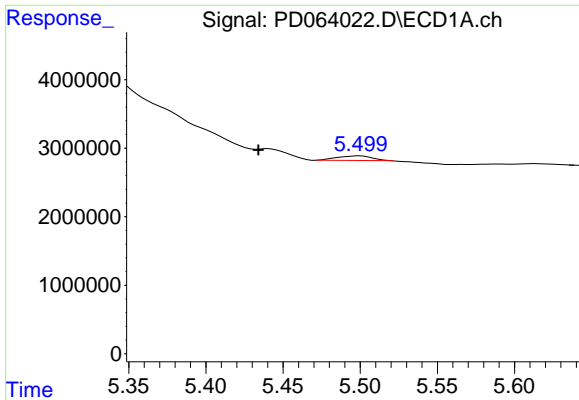
#8 Heptachlor epoxide  
 R.T.: 0.000 min  
 Exp R.T. : 5.840 min  
 Response: 0  
 Conc: N.D.



#9 Endosulfan I  
 R.T.: 5.500 min  
 Delta R.T.: 0.011 min  
 Response: 821279  
 Conc: 0.45 ng/ml

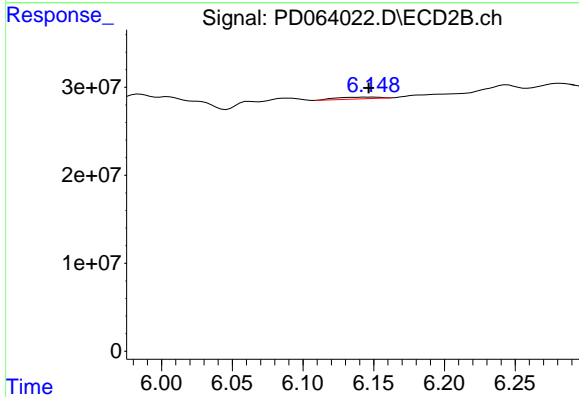


#9 Endosulfan I  
 R.T.: 6.149 min  
 Delta R.T.: -0.048 min  
 Response: 4303395  
 Conc: 0.22 ng/ml

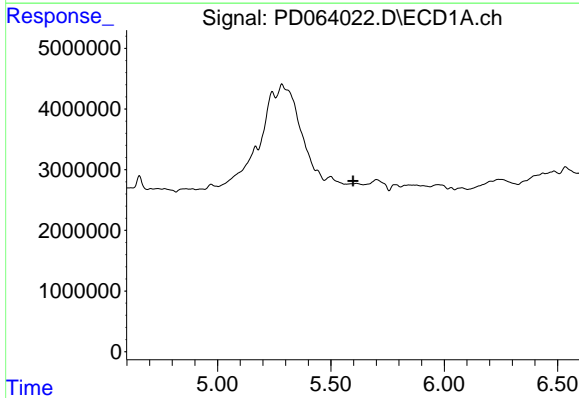


#11 cis-Chlordane  
 R.T.: 5.500 min  
 Delta R.T.: 0.066 min  
 Response: 821279  
 Conc: 0.43 ng/ml

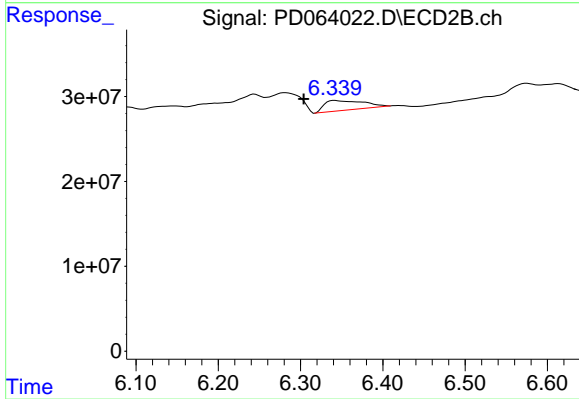
Instrument :  
 ECD\_D  
 ClientSampled :



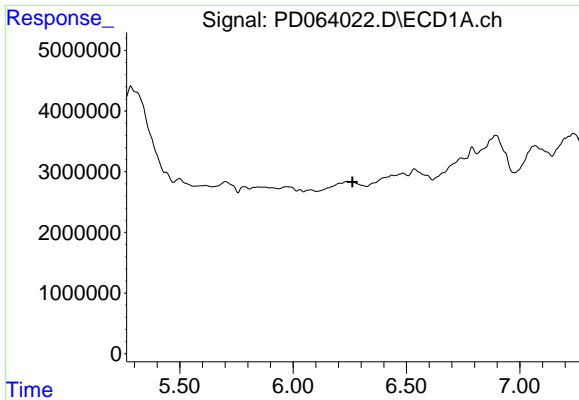
#11 cis-Chlordane  
 R.T.: 6.149 min  
 Delta R.T.: 0.002 min  
 Response: 4303395  
 Conc: 0.21 ng/ml



#12 4,4'-DDE  
 R.T.: 0.000 min  
 Exp R.T. : 5.598 min  
 Response: 0  
 Conc: N.D.



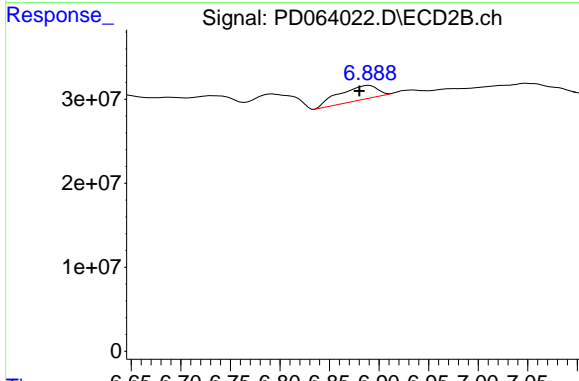
#12 4,4'-DDE  
 R.T.: 6.341 min  
 Delta R.T.: 0.038 min  
 Response: 38194992  
 Conc: 1.89 ng/ml



#15 Endosulfan II

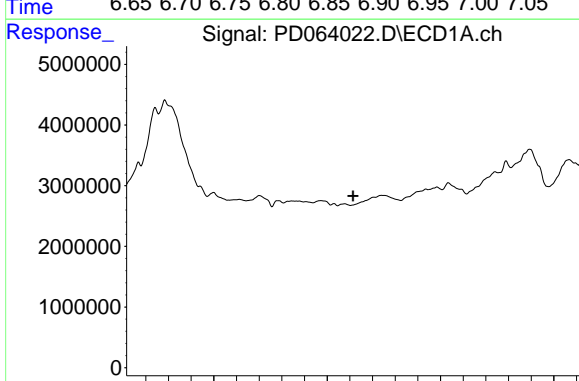
R.T.: 6.208 min  
 Delta R.T.: -0.054 min  
 Response: -1400862  
 Conc: N.D.

Instrument :  
 ECD\_D  
 ClientSampled :



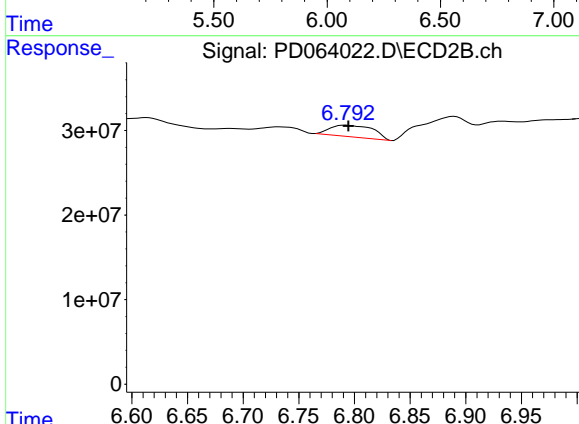
#15 Endosulfan II

R.T.: 6.890 min  
 Delta R.T.: 0.010 min  
 Response: 44998096  
 Conc: 2.78 ng/ml



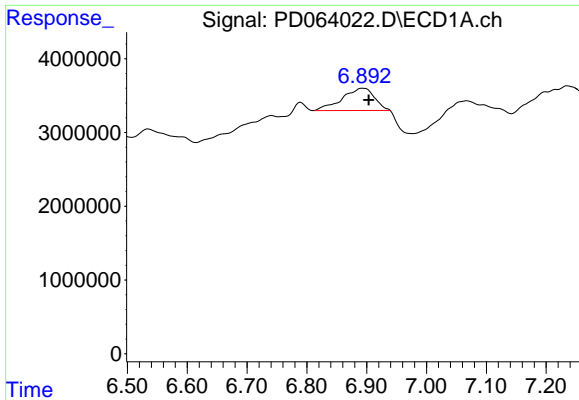
#16 4,4'-DDD

R.T.: 0.000 min  
 Exp R.T. : 6.115 min  
 Response: 0  
 Conc: N.D.



#16 4,4'-DDD

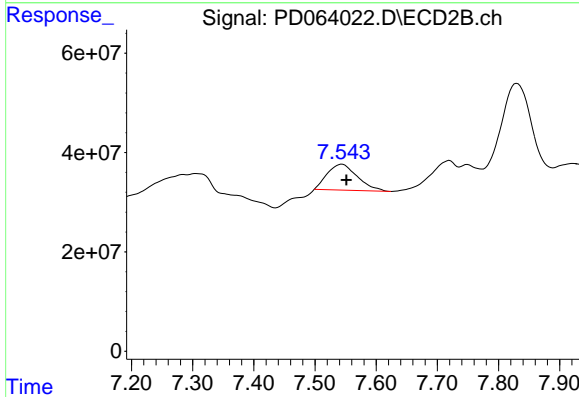
R.T.: 6.792 min  
 Delta R.T.: -0.002 min  
 Response: 36023094  
 Conc: 2.14 ng/ml



#20 Methoxychlor

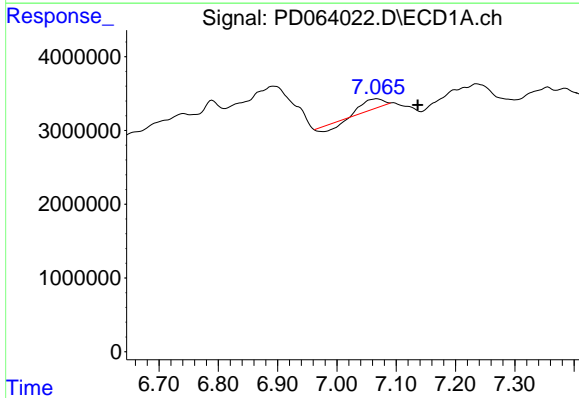
R.T.: 6.893 min  
 Delta R.T.: -0.010 min  
 Response: 11317607  
 Conc: 12.28 ng/ml

Instrument :  
 ECD\_D  
 ClientSampleId :



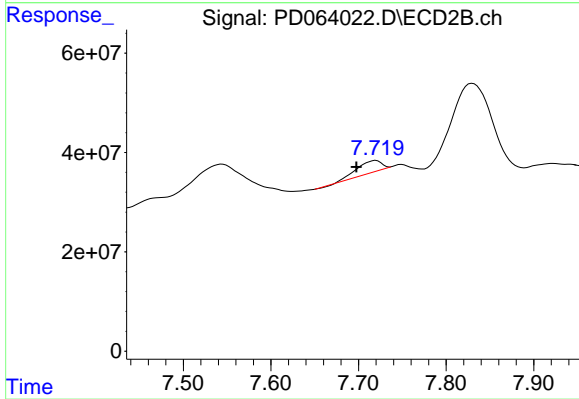
#20 Methoxychlor

R.T.: 7.544 min  
 Delta R.T.: -0.007 min  
 Response: 178467385  
 Conc: 23.07 ng/ml



#21 Endrin ketone

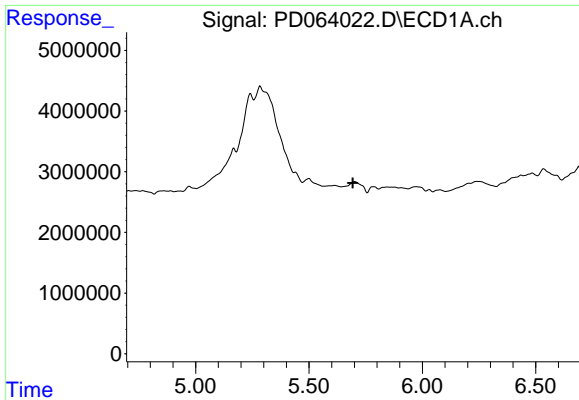
R.T.: 7.068 min  
 Delta R.T.: -0.069 min  
 Response: 1654275  
 Conc: 0.87 ng/ml



#21 Endrin ketone

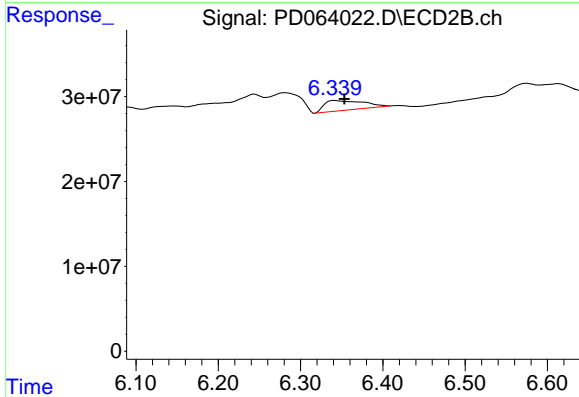
R.T.: 7.720 min  
 Delta R.T.: 0.022 min  
 Response: 44801888  
 Conc: 2.82 ng/ml



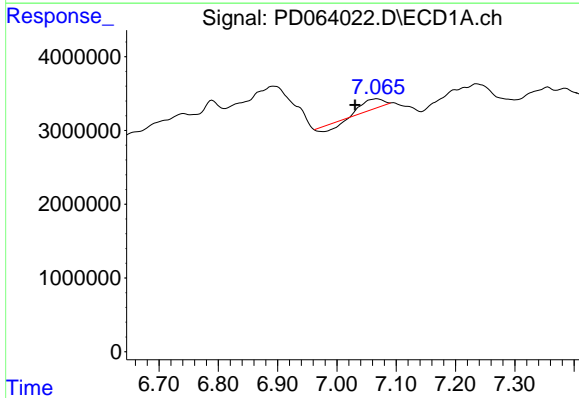


#22 Toxaphene-1  
 R.T.: 0.000 min  
 Exp R.T.: 5.694 min  
 Response: 0  
 Conc: N.D.

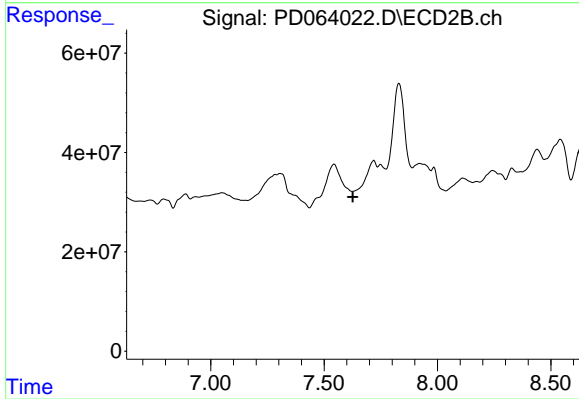
Instrument :  
 ECD\_D  
 ClientSampleId :



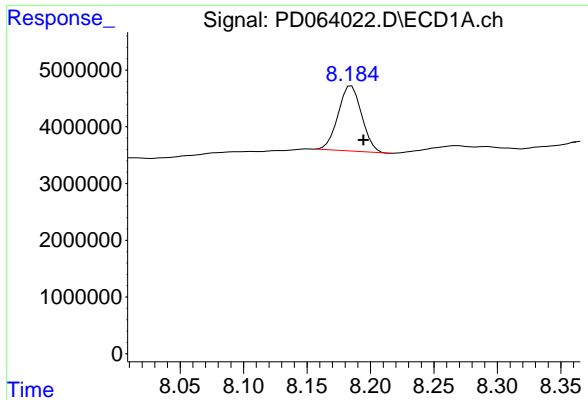
#22 Toxaphene-1  
 R.T.: 6.341 min  
 Delta R.T.: -0.012 min  
 Response: 38194992  
 Conc: 438.16 ng/ml



#26 Toxaphene-5  
 R.T.: 7.068 min  
 Delta R.T.: 0.038 min  
 Response: 1654275  
 Conc: 46.43 ng/ml



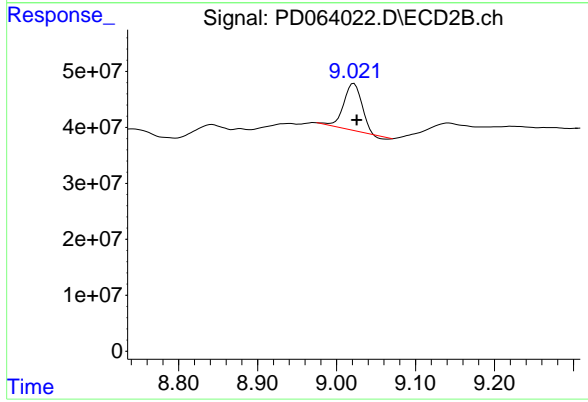
#26 Toxaphene-5  
 R.T.: 0.000 min  
 Exp R.T.: 7.626 min  
 Response: 0  
 Conc: N.D.



#27 Decachlorobiphenyl

R.T.: 8.185 min  
Delta R.T.: -0.009 min  
Response: 14863998  
Conc: 8.59 ng/ml

Instrument :  
ECD\_D  
ClientSampleId :



#27 Decachlorobiphenyl

R.T.: 9.022 min  
Delta R.T.: -0.004 min  
Response: 127330379  
Conc: 9.18 ng/ml