

Data Path : Z:\pestpcbsrv\HPCHEM1\ECD_D\Data\PD062921\
 Data File : PD064034.D
 Signal(s) : Signal #1: ECD1A.ch Signal #2: ECD2B.ch
 Acq On : 29 Jun 2021 23:28
 Operator : AR\AJ
 Sample : M2808-19
 Misc :
 ALS Vial : 33 Sample Multiplier: 1

Instrument :
 ECD_D
 ClientSampleID :

Integration File signal 1: autoint1.e
 Integration File signal 2: autoint2.e
 Quant Time: Jun 30 04:07:32 2021
 Quant Method : Z:\pestpcbsrv\HPCHEM1\ECD_D\Method\PD061421CLP.M
 Quant Title : GC Extractables
 QLast Update : Mon Jun 21 04:24:00 2021
 Response via : Initial Calibration
 Integrator: ChemStation

Volume Inj. : 1 µl
 Signal #1 Phase : ZB-MR2 Signal #2 Phase: ZB-MR1
 Signal #1 Info : 30M x 0.32mm x0.2 Signal #2 Info : 30M x 0.32mm x 0.50µm

	Compound	RT#1	RT#2	Resp#1	Resp#2	ng/ml	ng/ml

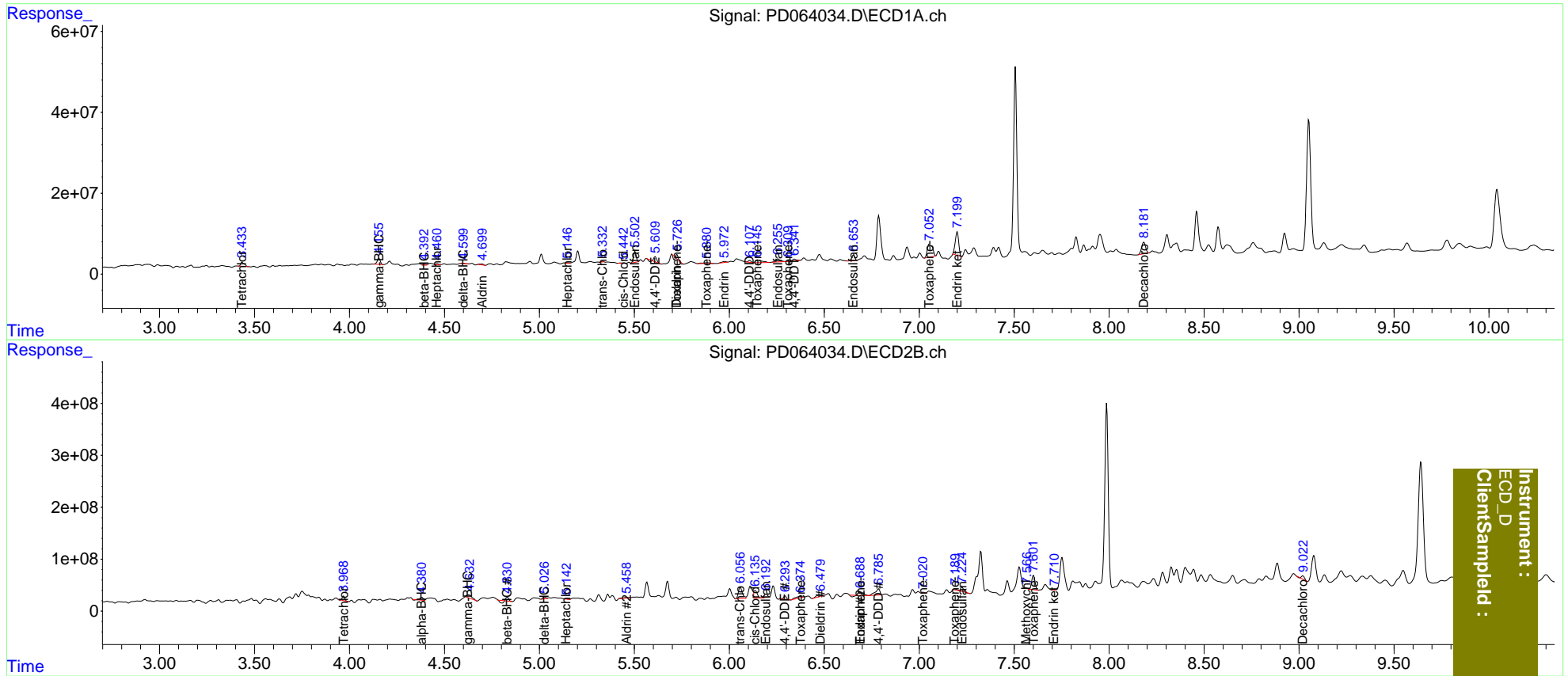
System Monitoring Compounds							
1)	SA Tetrachlo...	3.435	3.969	12686232	75565476	8.161	4.771 #
27)	SA Decachlor...	8.183	9.020	41334759	75315006	23.880	5.431 #
Target Compounds							
2)	A alpha-BHC	3.892	4.381	-516582	54108681	N.D.	2.178
3)	MA gamma-BHC...	4.156	4.624	17076495	119.1E6	7.503	5.222 #
4)	MA Heptachlor	4.462	5.142	2827773	18903383	1.295	0.811 #
5)	MB Aldrin	4.699	5.459	3157736	28872339	1.558	1.311
6)	B beta-BHC	4.394	4.831	3076876	26766597	3.169	2.744
7)	B delta-BHC	4.601	5.027	603949	41396615	0.280	1.767 #
9)	A Endosulfan I	5.504	6.194	26311100	74572959	14.379	3.764 #
10)	B trans-Chl...	5.333f	6.058	1414544	307.8E6	0.727	14.632 #
11)	B cis-Chlor...	5.443	6.136	1822903	183.4E6	0.959	9.106 #
12)	B 4,4'-DDE	5.610	6.294	10652045	66889757	5.395	3.311 #
13)	MA Dieldrin	5.725	6.481	1115856	65973929	0.533	3.154 #
14)	MA Endrin	5.975	6.689	3590609	93685857	1.985	5.355 #
15)	B Endosulfa...	6.256	6.875	11466981	-21932348	7.017	N.D. #
16)	A 4,4'-DDD	6.108	6.787	4628805	205.8E6	2.804	12.224 #
17)	MA 4,4'-DDT	6.343	0.000	5047784	0	2.999	N.D. #
19)	B Endosulfa...	6.654	7.226	14089042	84355723	9.076	5.126 #
21)	B Endrin ke...	7.200f	7.712	72733781	9569805	38.340	0.603 #
22)	Toxaphene-1	5.725	6.376	1115856	71044392	93.972	814.993 #
23)	Toxaphene-2	5.882	6.689	6015014	93685857	499.942	872.848 #
24)	Toxaphene-3	6.147	7.021	14317578	10678200	1046.894	77.506 #
25)	Toxaphene-4	6.312	7.188	489765	18138159	15.468	43.968 #
26)	Toxaphene-5	7.053	7.602	61022843	336.8E6	1712.559	1971.907

(f)=RT Delta > 1/2 Window (#)=Amounts differ by > 25% (m)=manual int.

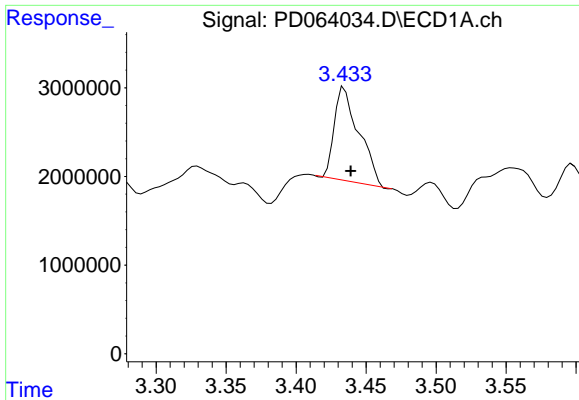
Data Path : Z:\pestpcbsrv\HPCHEM1\ECD_D\Data\PD062921\
 Data File : PD064034.D
 Signal(s) : Signal #1: ECD1A.ch Signal #2: ECD2B.ch
 Acq On : 29 Jun 2021 23:28
 Operator : AR\AJ
 Sample : M2808-19
 Misc :
 ALS Vial : 33 Sample Multiplier: 1

Integration File signal 1: autoint1.e
 Integration File signal 2: autoint2.e
 Quant Time: Jun 30 04:07:32 2021
 Quant Method : Z:\pestpcbsrv\HPCHEM1\ECD_D\Method\PD061421CLP.M
 Quant Title : GC Extractables
 QLast Update : Mon Jun 21 04:24:00 2021
 Response via : Initial Calibration
 Integrator: ChemStation

Volume Inj. : 1 µl
 Signal #1 Phase : ZB-MR2 Signal #2 Phase: ZB-MR1
 Signal #1 Info : 30M x 0.32mm x0.2 Signal #2 Info : 30M x 0.32mm x 0.50µm

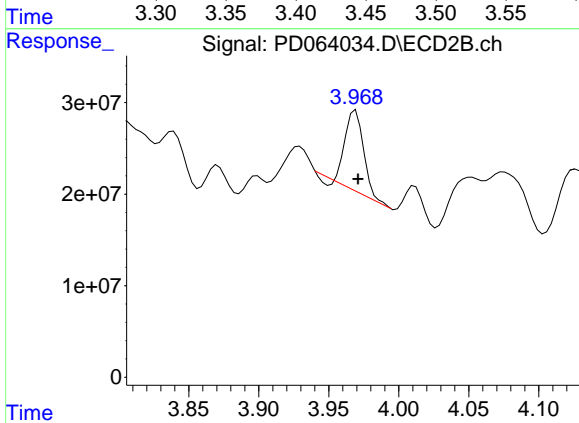


Instrument :
 ECD_D
 ClientSampleId :

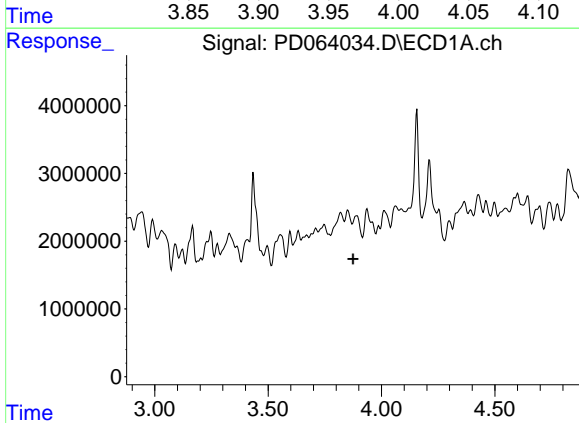


#1 Tetrachloro-m-xylene
 R.T.: 3.435 min
 Delta R.T.: -0.004 min
 Response: 12686232
 Conc: 8.16 ng/ml

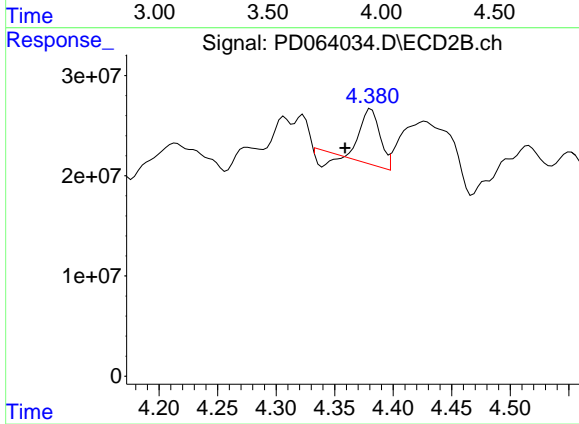
Instrument :
 ECD_D
 ClientSampleId :



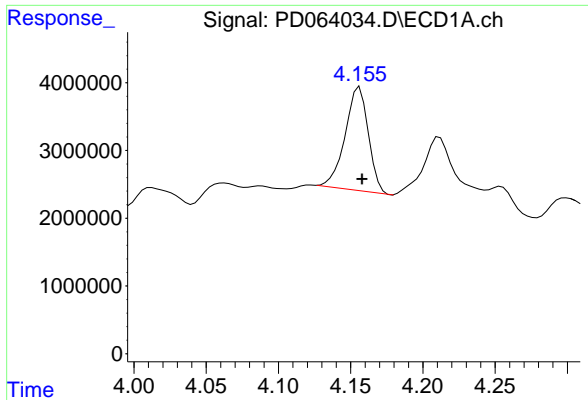
#1 Tetrachloro-m-xylene
 R.T.: 3.969 min
 Delta R.T.: -0.002 min
 Response: 75565476
 Conc: 4.77 ng/ml



#2 alpha-BHC
 R.T.: 3.892 min
 Delta R.T.: 0.017 min
 Response: -516582
 Conc: N.D.

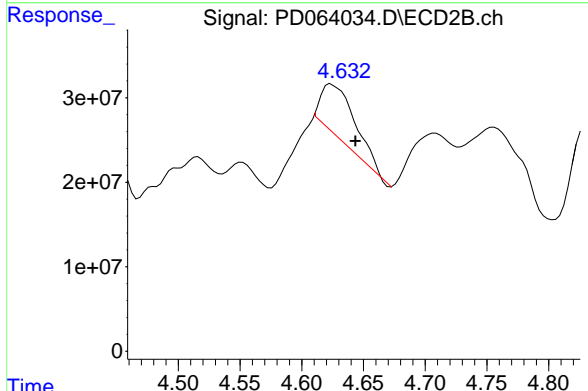


#2 alpha-BHC
 R.T.: 4.381 min
 Delta R.T.: 0.022 min
 Response: 54108681
 Conc: 2.18 ng/ml

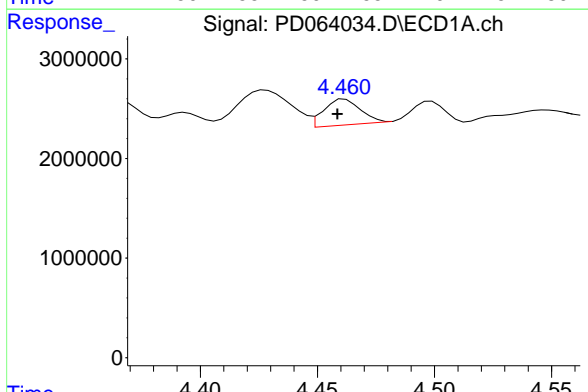


#3 gamma-BHC (Lindane)
 R.T.: 4.156 min
 Delta R.T.: -0.002 min
 Response: 17076495
 Conc: 7.50 ng/ml

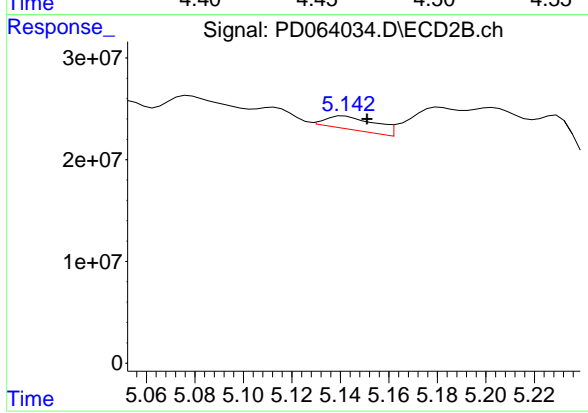
Instrument :
 ECD_D
 ClientSampleId :



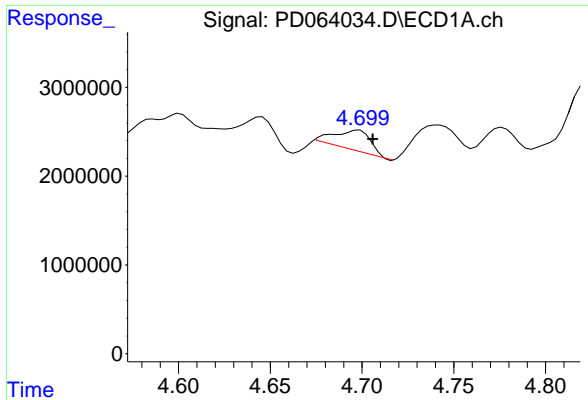
#3 gamma-BHC (Lindane)
 R.T.: 4.624 min
 Delta R.T.: -0.020 min
 Response: 119143386
 Conc: 5.22 ng/ml



#4 Heptachlor
 R.T.: 4.462 min
 Delta R.T.: 0.003 min
 Response: 2827773
 Conc: 1.30 ng/ml

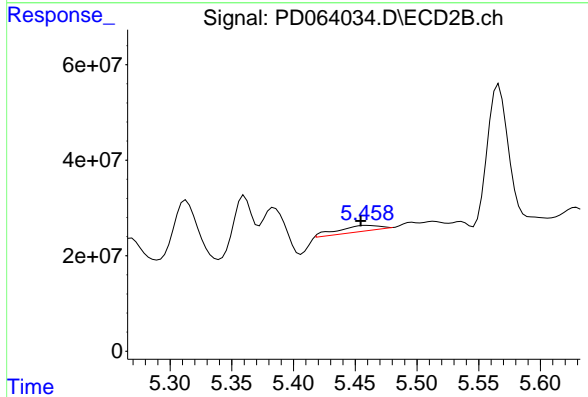


#4 Heptachlor
 R.T.: 5.142 min
 Delta R.T.: -0.010 min
 Response: 18903383
 Conc: 0.81 ng/ml

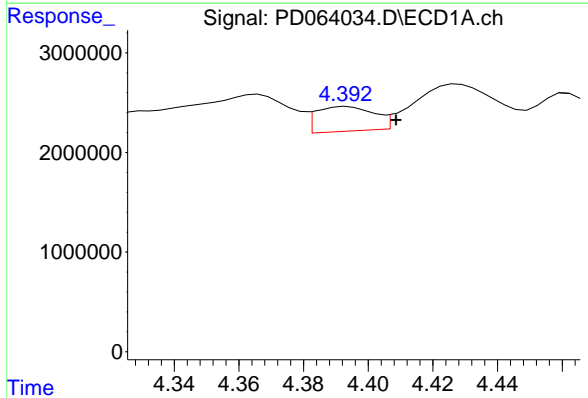


#5 Aldrin
 R.T.: 4.699 min
 Delta R.T.: -0.007 min
 Response: 3157736
 Conc: 1.56 ng/ml

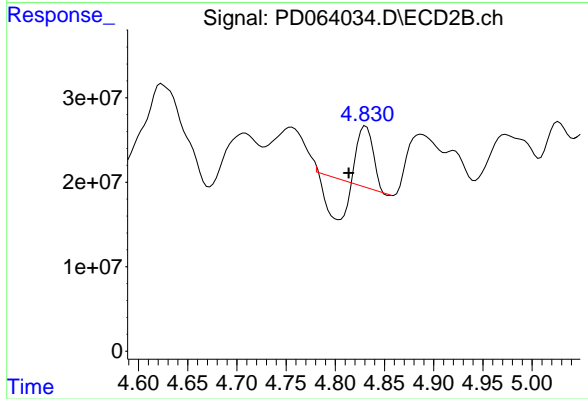
Instrument :
 ECD_D
 ClientSampled :



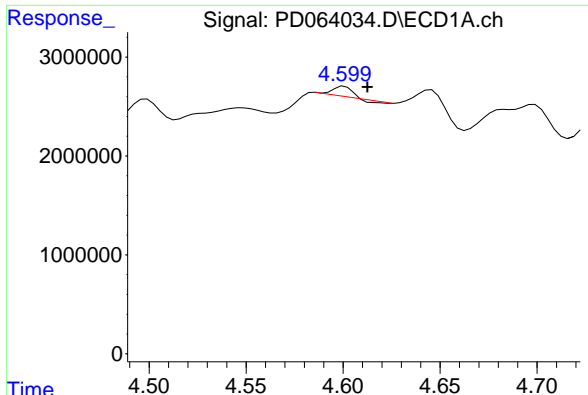
#5 Aldrin
 R.T.: 5.459 min
 Delta R.T.: 0.005 min
 Response: 28872339
 Conc: 1.31 ng/ml



#6 beta-BHC
 R.T.: 4.394 min
 Delta R.T.: -0.015 min
 Response: 3076876
 Conc: 3.17 ng/ml

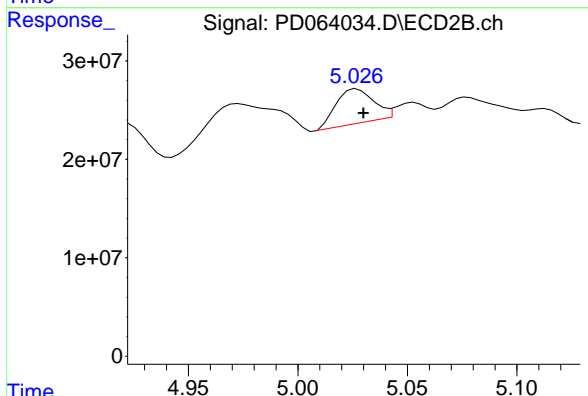


#6 beta-BHC
 R.T.: 4.831 min
 Delta R.T.: 0.018 min
 Response: 26766597
 Conc: 2.74 ng/ml

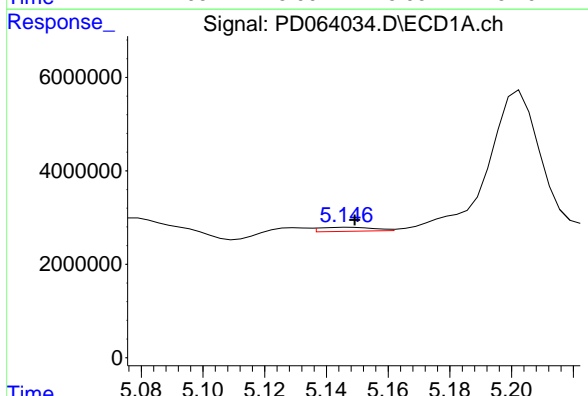


#7 delta-BHC
 R.T.: 4.601 min
 Delta R.T.: -0.012 min
 Response: 603949
 Conc: 0.28 ng/ml

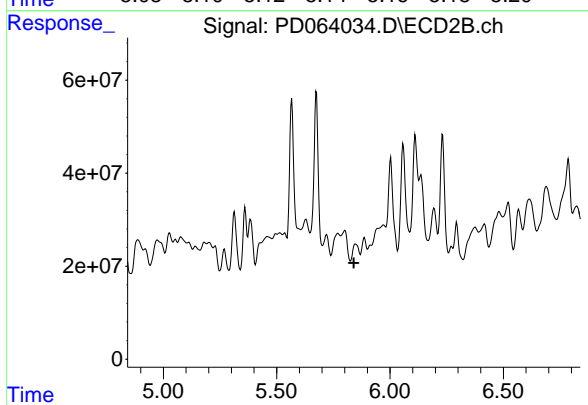
Instrument :
 ECD_D
 ClientSampleId :



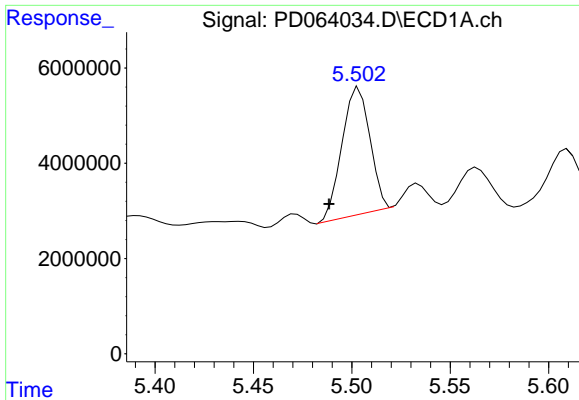
#7 delta-BHC
 R.T.: 5.027 min
 Delta R.T.: -0.003 min
 Response: 41396615
 Conc: 1.77 ng/ml



#8 Heptachlor epoxide
 R.T.: 5.147 min
 Delta R.T.: -0.002 min
 Response: 1041678
 Conc: 0.55 ng/ml

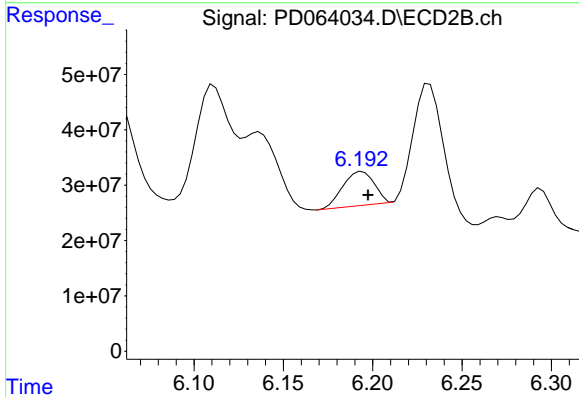


#8 Heptachlor epoxide
 R.T.: 5.847 min
 Delta R.T.: 0.007 min
 Response: -52555738
 Conc: N.D.

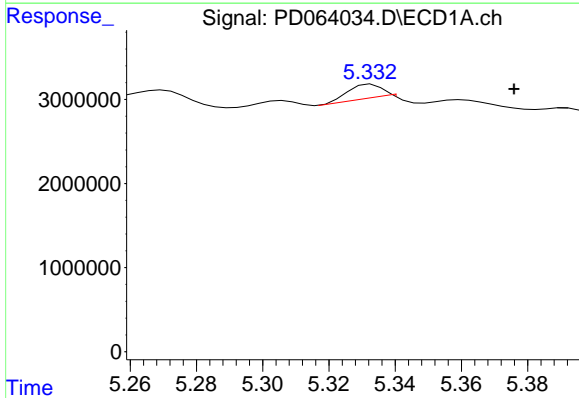


#9 Endosulfan I
 R.T.: 5.504 min
 Delta R.T.: 0.015 min
 Response: 26311100
 Conc: 14.38 ng/ml

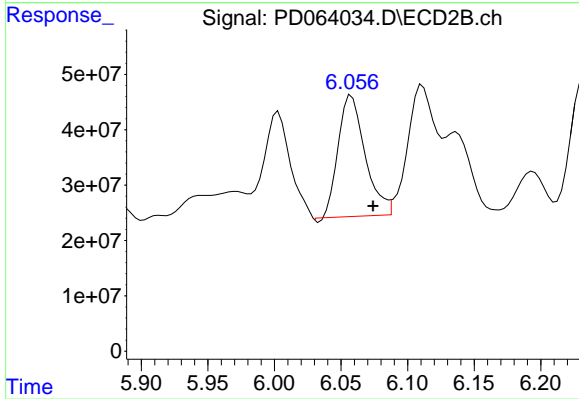
Instrument :
 ECD_D
 ClientSampleId :



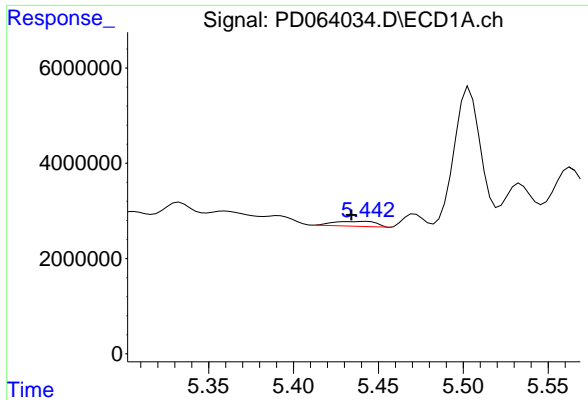
#9 Endosulfan I
 R.T.: 6.194 min
 Delta R.T.: -0.003 min
 Response: 74572959
 Conc: 3.76 ng/ml



#10 trans-Chlordane
 R.T.: 5.333 min
 Delta R.T.: -0.043 min
 Response: 1414544
 Conc: 0.73 ng/ml

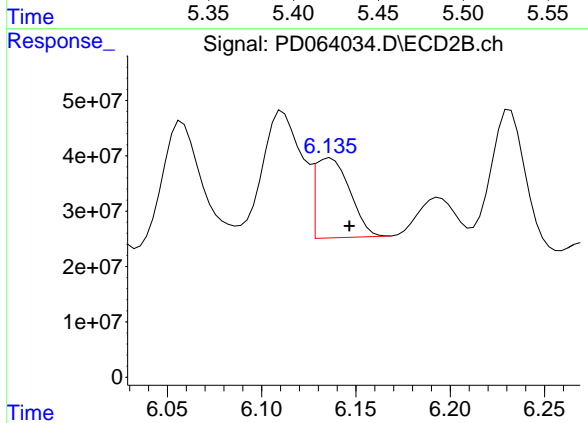


#10 trans-Chlordane
 R.T.: 6.058 min
 Delta R.T.: -0.016 min
 Response: 307771887
 Conc: 14.63 ng/ml

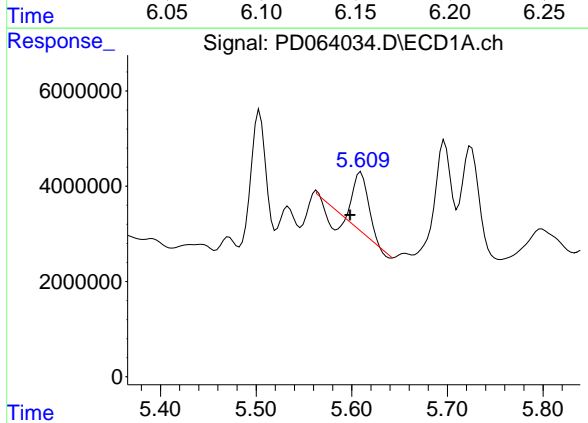


#11 cis-Chlordane
R.T.: 5.443 min
Delta R.T.: 0.009 min
Response: 1822903
Conc: 0.96 ng/ml

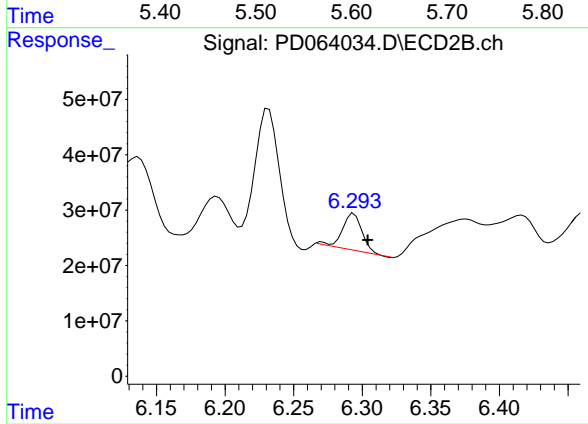
Instrument :
ECD_D
ClientSampleId :



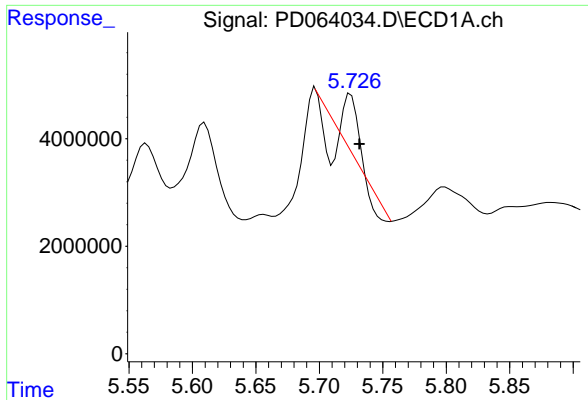
#11 cis-Chlordane
R.T.: 6.136 min
Delta R.T.: -0.010 min
Response: 183389071
Conc: 9.11 ng/ml



#12 4,4'-DDE
R.T.: 5.610 min
Delta R.T.: 0.011 min
Response: 10652045
Conc: 5.40 ng/ml

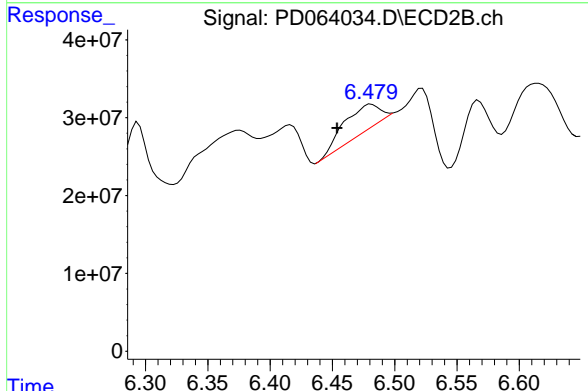


#12 4,4'-DDE
R.T.: 6.294 min
Delta R.T.: -0.010 min
Response: 66889757
Conc: 3.31 ng/ml

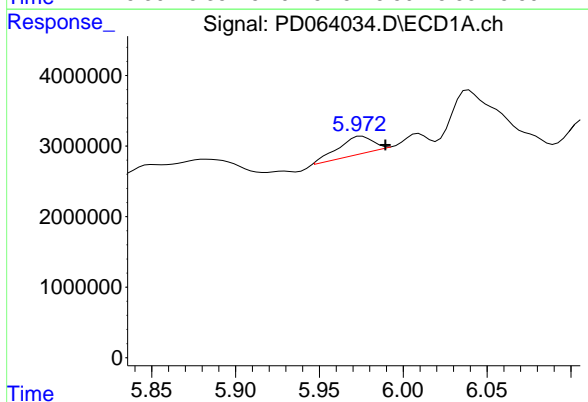


#13 Dieldrin
 R.T.: 5.725 min
 Delta R.T.: -0.007 min
 Response: 1115856
 Conc: 0.53 ng/ml

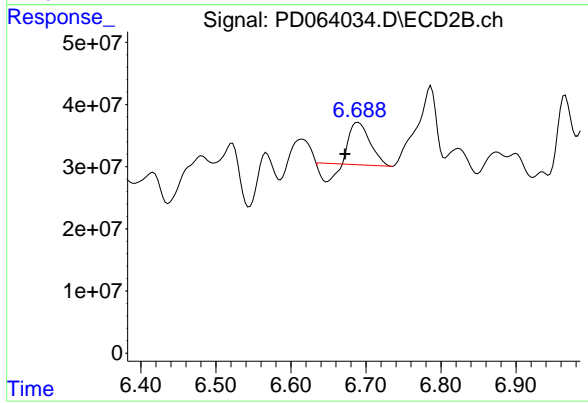
Instrument :
 ECD_D
 ClientSampled :



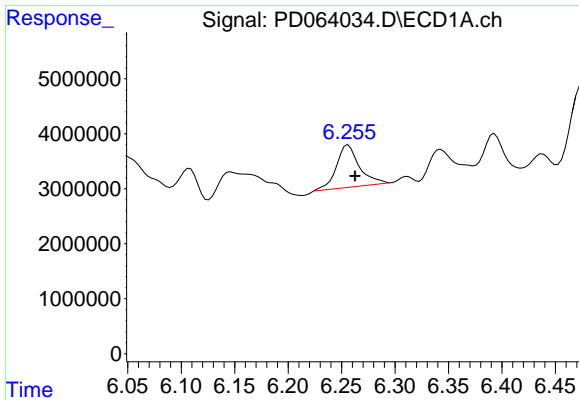
#13 Dieldrin
 R.T.: 6.481 min
 Delta R.T.: 0.028 min
 Response: 65973929
 Conc: 3.15 ng/ml



#14 Endrin
 R.T.: 5.975 min
 Delta R.T.: -0.014 min
 Response: 3590609
 Conc: 1.99 ng/ml



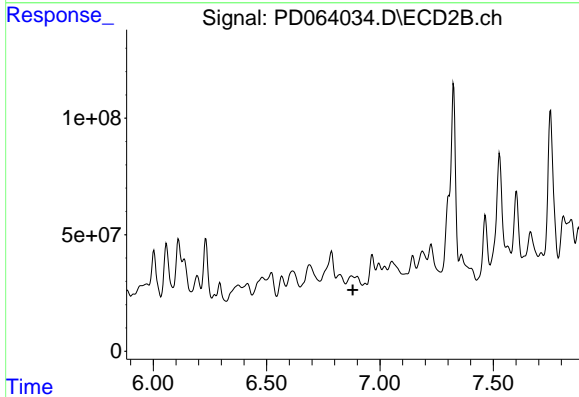
#14 Endrin
 R.T.: 6.689 min
 Delta R.T.: 0.018 min
 Response: 93685857
 Conc: 5.35 ng/ml



#15 Endosulfan II

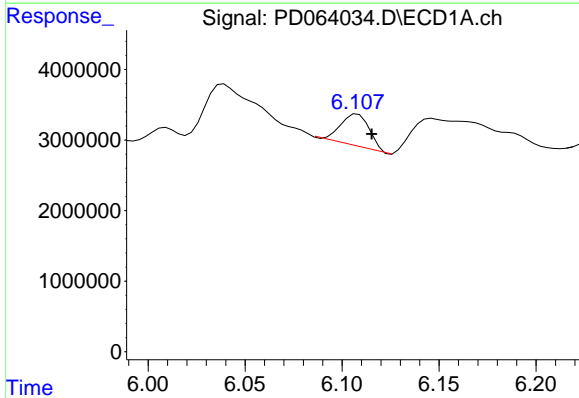
R.T.: 6.256 min
 Delta R.T.: -0.006 min
 Response: 11466981
 Conc: 7.02 ng/ml

Instrument :
 ECD_D
 ClientSampled :



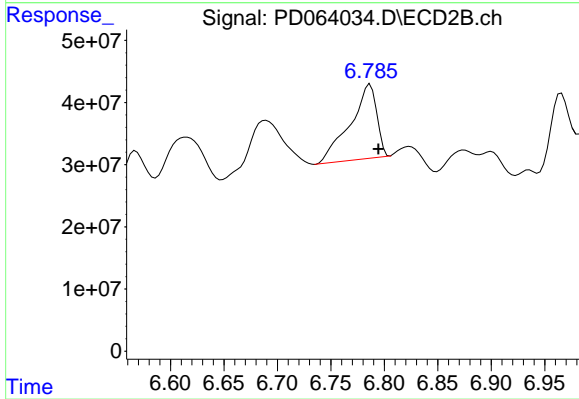
#15 Endosulfan II

R.T.: 6.875 min
 Delta R.T.: -0.005 min
 Response: -21932348
 Conc: N.D.



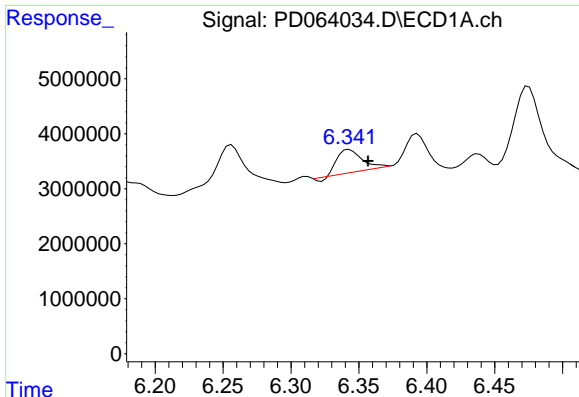
#16 4,4'-DDD

R.T.: 6.108 min
 Delta R.T.: -0.007 min
 Response: 4628805
 Conc: 2.80 ng/ml



#16 4,4'-DDD

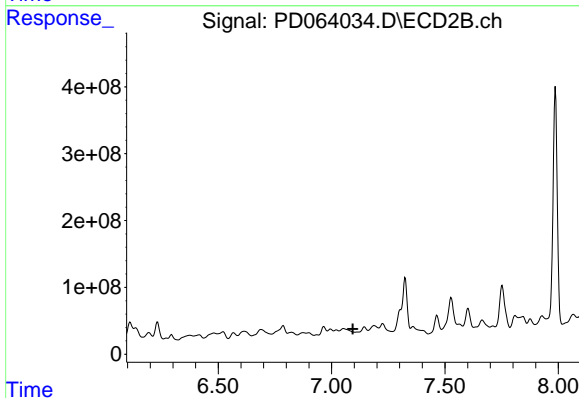
R.T.: 6.787 min
 Delta R.T.: -0.008 min
 Response: 205777086
 Conc: 12.22 ng/ml



#17 4,4'-DDT

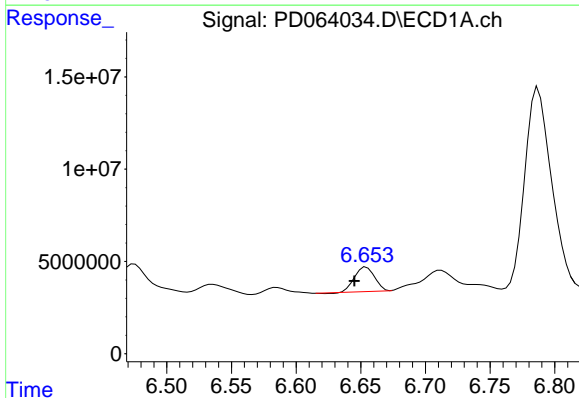
R.T.: 6.343 min
 Delta R.T.: -0.014 min
 Response: 5047784
 Conc: 3.00 ng/ml

Instrument :
 ECD_D
 ClientSampled :



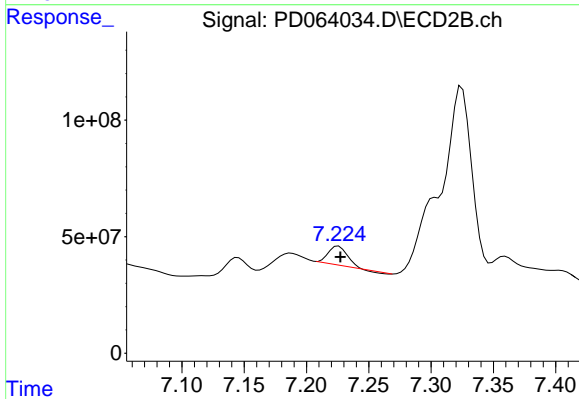
#17 4,4'-DDT

R.T.: 0.000 min
 Exp R.T. : 7.093 min
 Response: 0
 Conc: N.D.



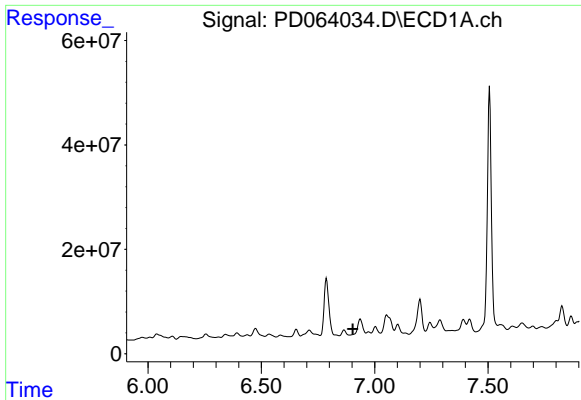
#19 Endosulfan Sulfate

R.T.: 6.654 min
 Delta R.T.: 0.009 min
 Response: 14089042
 Conc: 9.08 ng/ml



#19 Endosulfan Sulfate

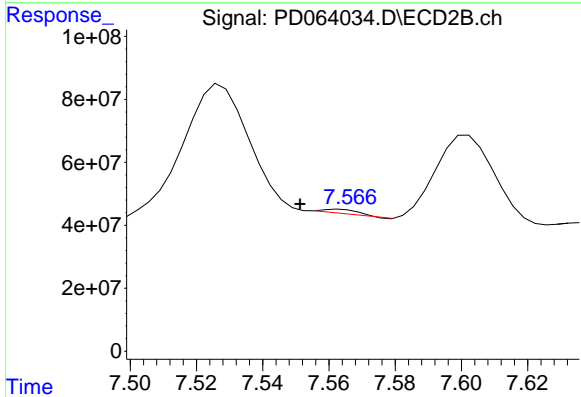
R.T.: 7.226 min
 Delta R.T.: -0.002 min
 Response: 84355723
 Conc: 5.13 ng/ml



#20 Methoxychlor

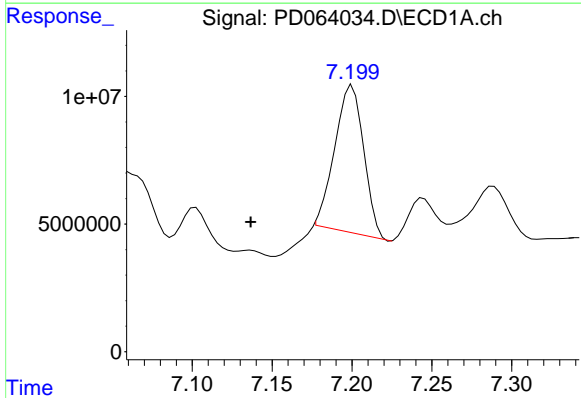
R.T.: 6.936 min
 Delta R.T.: 0.033 min
 Response: -9793194
 Conc: N.D.

Instrument :
 ECD_D
 ClientSampleId :



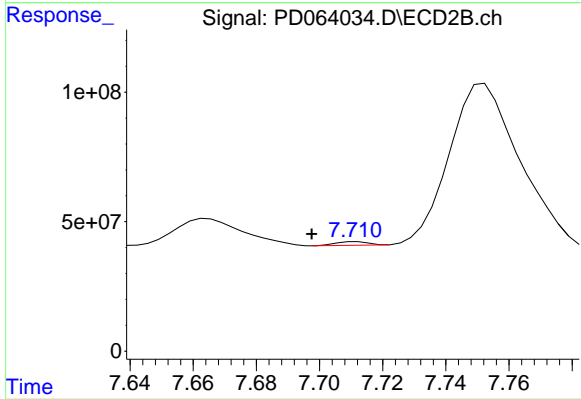
#20 Methoxychlor

R.T.: 7.563 min
 Delta R.T.: 0.012 min
 Response: 9984790
 Conc: 1.29 ng/ml



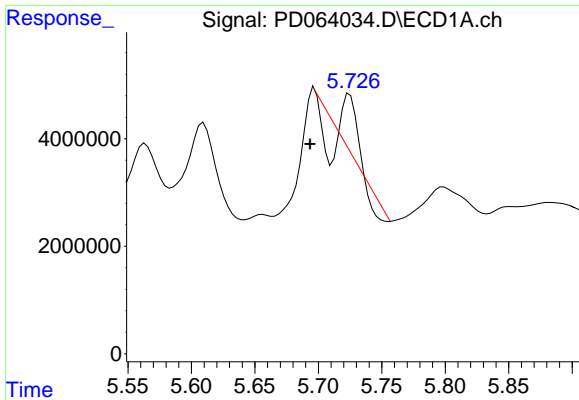
#21 Endrin ketone

R.T.: 7.200 min
 Delta R.T.: 0.064 min
 Response: 72733781
 Conc: 38.34 ng/ml



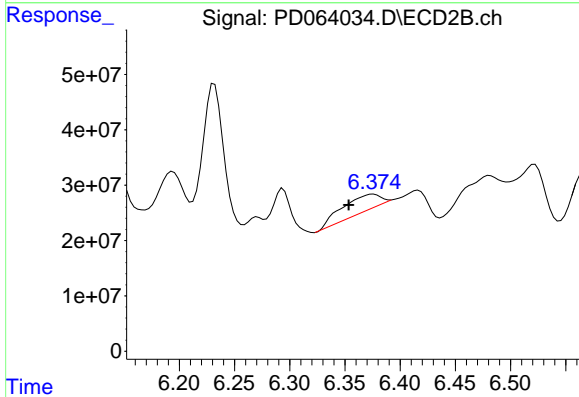
#21 Endrin ketone

R.T.: 7.712 min
 Delta R.T.: 0.014 min
 Response: 9569805
 Conc: 0.60 ng/ml

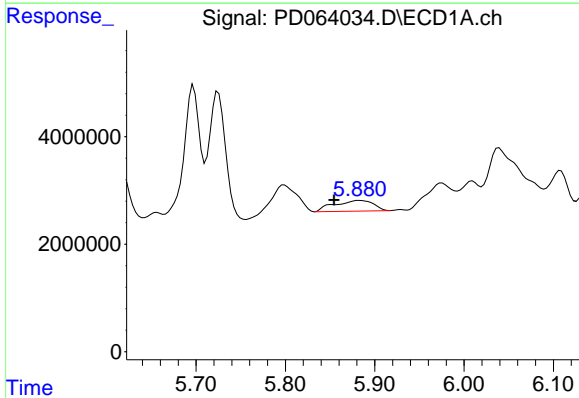


#22 Toxaphene-1
 R.T.: 5.725 min
 Delta R.T.: 0.031 min
 Response: 1115856
 Conc: 93.97 ng/ml

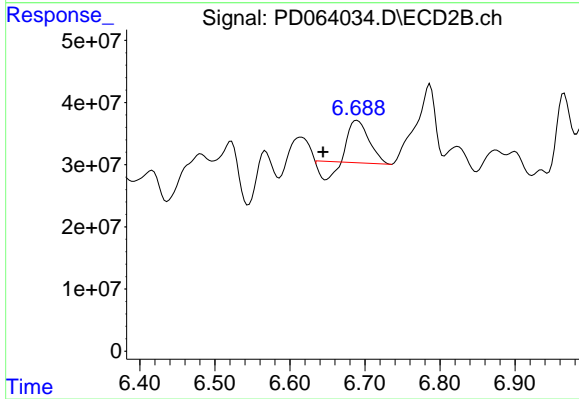
Instrument :
 ECD_D
 ClientSampleId :



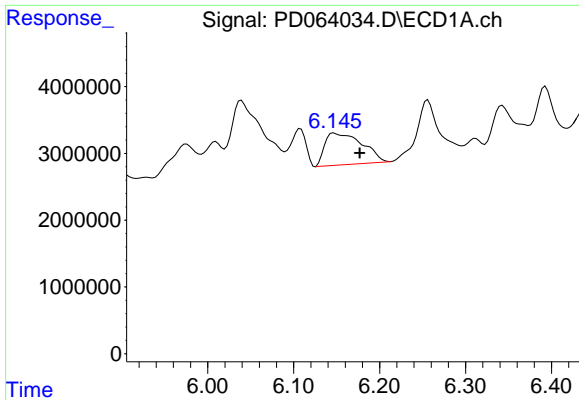
#22 Toxaphene-1
 R.T.: 6.376 min
 Delta R.T.: 0.022 min
 Response: 71044392
 Conc: 814.99 ng/ml



#23 Toxaphene-2
 R.T.: 5.882 min
 Delta R.T.: 0.028 min
 Response: 6015014
 Conc: 499.94 ng/ml



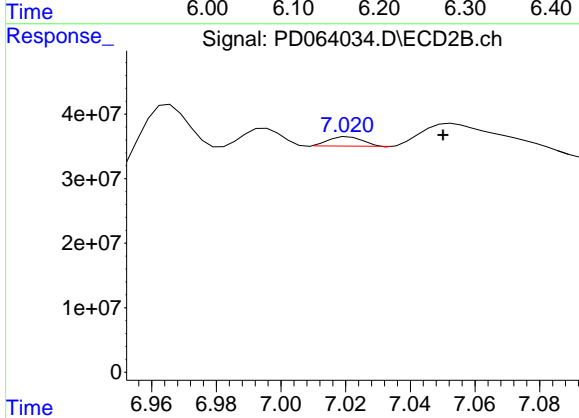
#23 Toxaphene-2
 R.T.: 6.689 min
 Delta R.T.: 0.045 min
 Response: 93685857
 Conc: 872.85 ng/ml



#24 Toxaphene-3

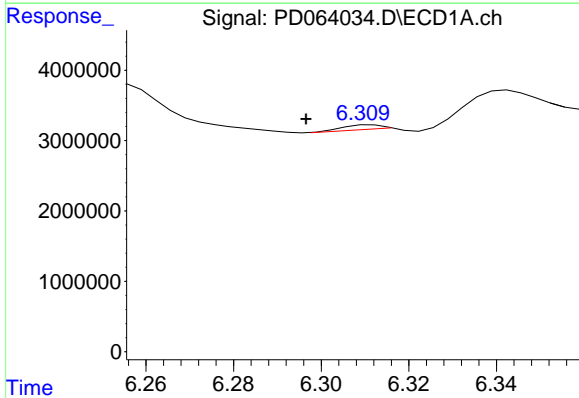
R.T.: 6.147 min
 Delta R.T.: -0.030 min
 Response: 14317578
 Conc: 1046.89 ng/ml

Instrument :
 ECD_D
 ClientSampleId :



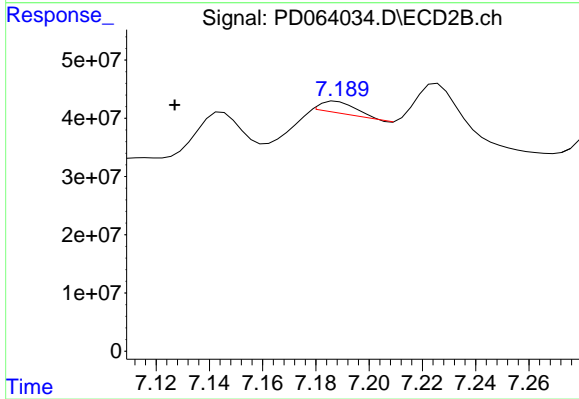
#24 Toxaphene-3

R.T.: 7.021 min
 Delta R.T.: -0.029 min
 Response: 10678200
 Conc: 77.51 ng/ml



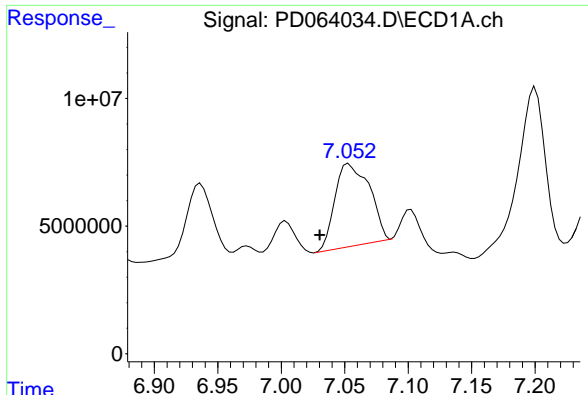
#25 Toxaphene-4

R.T.: 6.312 min
 Delta R.T.: 0.015 min
 Response: 489765
 Conc: 15.47 ng/ml



#25 Toxaphene-4

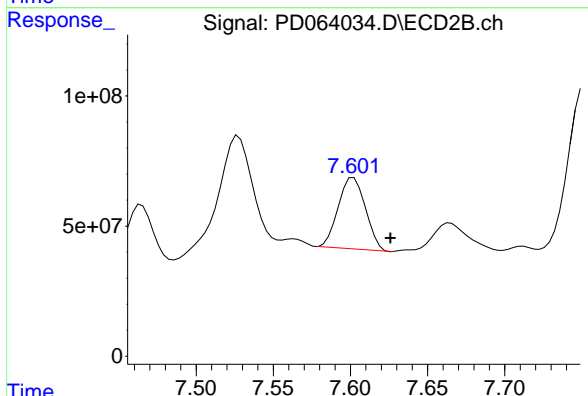
R.T.: 7.188 min
 Delta R.T.: 0.061 min
 Response: 18138159
 Conc: 43.97 ng/ml



#26 Toxaphene-5

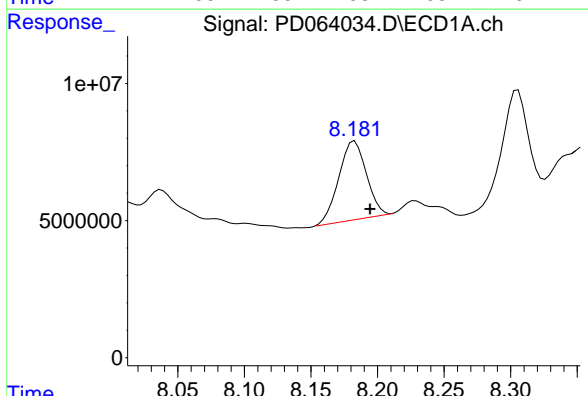
R.T.: 7.053 min
 Delta R.T.: 0.023 min
 Response: 61022843
 Conc: 1712.56 ng/ml

Instrument :
 ECD_D
 ClientSampleId :



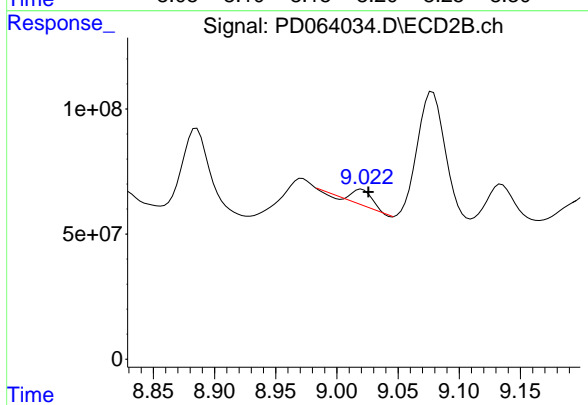
#26 Toxaphene-5

R.T.: 7.602 min
 Delta R.T.: -0.024 min
 Response: 336816051
 Conc: 1971.91 ng/ml



#27 Decachlorobiphenyl

R.T.: 8.183 min
 Delta R.T.: -0.012 min
 Response: 41334759
 Conc: 23.88 ng/ml



#27 Decachlorobiphenyl

R.T.: 9.020 min
 Delta R.T.: -0.005 min
 Response: 75315006
 Conc: 5.43 ng/ml