

Data Path : Z:\pestpcbsrv\HPCHEM1\ECD_D\Data\PD063021\
 Data File : PD064049.D
 Signal(s) : Signal #1: ECD1A.ch Signal #2: ECD2B.ch
 Acq On : 30 Jun 2021 11:48
 Operator : AR\AJ
 Sample : M2808-18
 Misc :
 ALS Vial : 9 Sample Multiplier: 1

Instrument :
 ECD_D
 ClientSampleId :

Integration File signal 1: autoint1.e
 Integration File signal 2: autoint2.e
 Quant Time: Jul 01 03:27:02 2021
 Quant Method : Z:\pestpcbsrv\HPCHEM1\ECD_D\Method\PD061421CLP.M
 Quant Title : GC Extractables
 QLast Update : Mon Jun 21 04:24:00 2021
 Response via : Initial Calibration
 Integrator: ChemStation

Volume Inj. : 1 µl
 Signal #1 Phase : ZB-MR2 Signal #2 Phase: ZB-MR1
 Signal #1 Info : 30M x 0.32mm x0.2 Signal #2 Info : 30M x 0.32mm x 0.50µm

	Compound	RT#1	RT#2	Resp#1	Resp#2	ng/ml	ng/ml

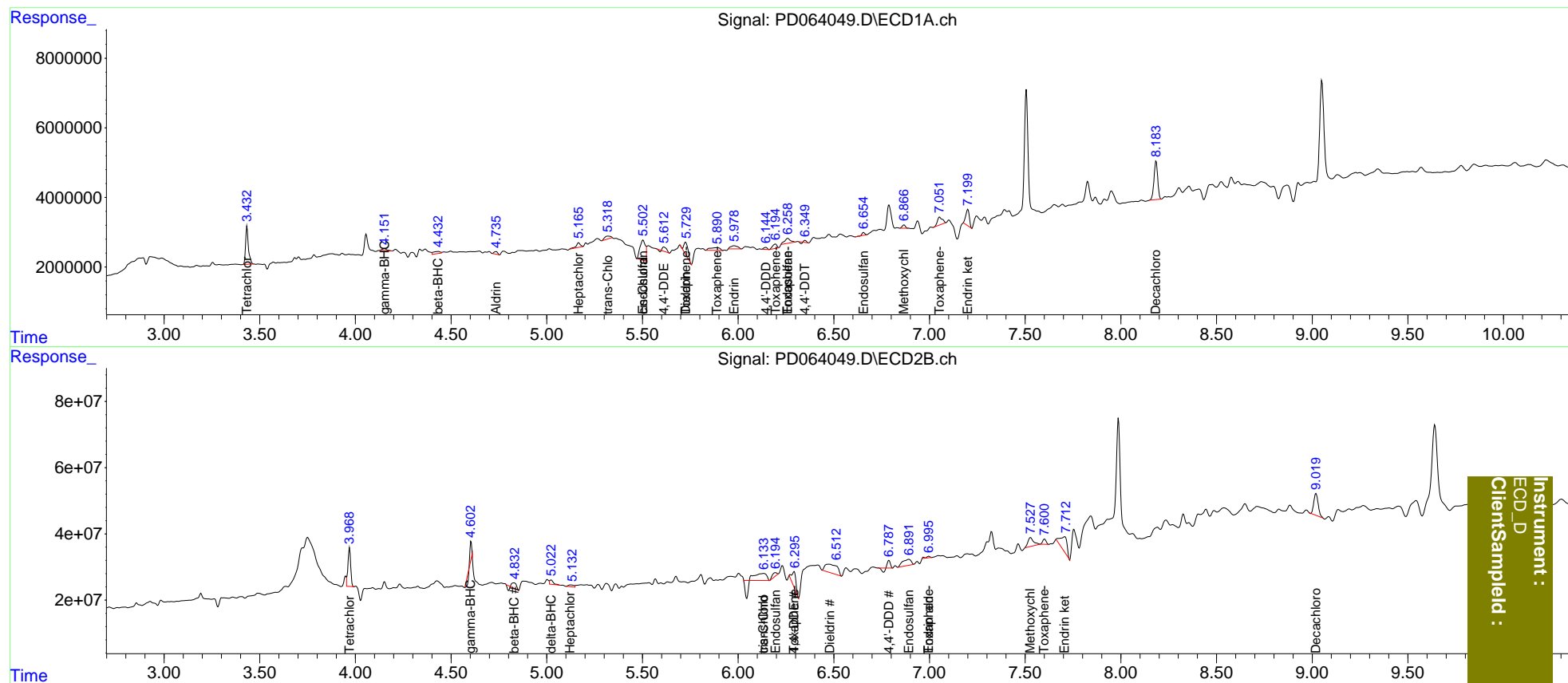
System Monitoring Compounds							
1)	SA Tetrachlo...	3.434	3.970	11177866	117.4E6	7.191	7.411
2)	SA Decachlor...	8.184	9.020	14811317	103.8E6	8.557	7.486
Target Compounds							
2)	A alpha-BHC	0.000	4.327f	0	1972684	N.D.	<MDL
3)	MA gamma-BHC...	4.152	4.604f	940059	13722452	0.413	0.601 #
4)	MA Heptachlor	4.464	5.124f	209664	11594004	<MDL	0.498 #
5)	MB Aldrin	4.735f	0.000	978140	0	0.483	N.D. #
6)	B beta-BHC	4.434f	4.829	1565088	18646693	1.612	1.912
7)	B delta-BHC	0.000	5.023	0	18138514	N.D.	0.774
9)	A Endosulfan I	5.503	6.195	11041487	18213881	6.034	0.919 #
10)	B trans-Chl...	5.319f	6.134f	2011123	41401010	1.034	1.968 #
11)	B cis-Chlor...	5.503f	6.134	11041487	41401010	5.811	2.056 #
12)	B 4,4'-DDE	5.612	6.292	1729828	69446618	0.876	3.437 #
13)	MA Dieldrin	5.726	6.477	5678139	116.5E6	2.713	5.570 #
14)	MA Endrin	5.980	6.706	2365925	-9319118	1.308	N.D. #
15)	B Endosulfa...	6.259	6.892	3019567	57889001	1.848	3.578 #
16)	A 4,4'-DDD	6.145	6.788	742845	11378462	0.450	0.676 #
17)	MA 4,4'-DDT	6.349	0.000	228807	0	0.136	N.D. #
18)	B Endrin al...	0.000	6.997	0	6997171	N.D.	0.497
19)	B Endosulfa...	6.656	0.000	693544	0	0.447	N.D. #
20)	A Methoxychlor	6.867f	7.528	1092900	53718451	1.185	6.943 #
21)	B Endrin ke...	7.200f	7.707	6067400	111.4E6	3.198	7.018 #
22)	Toxaphene-1	5.726	6.292	5678139	69446618	478.186	796.664 #
23)	Toxaphene-2	5.891	6.706	2938659	-9319118	244.249	N.D. #
24)	Toxaphene-3	6.195	6.997	1977612	6997171	144.602	50.788 #
25)	Toxaphene-4	6.259	0.000	3019567	0	95.365	N.D. #
26)	Toxaphene-5	7.053	7.601	4014135	19492970	112.654	114.123

(f)=RT Delta > 1/2 Window (#)=Amounts differ by > 25% (m)=manual int.

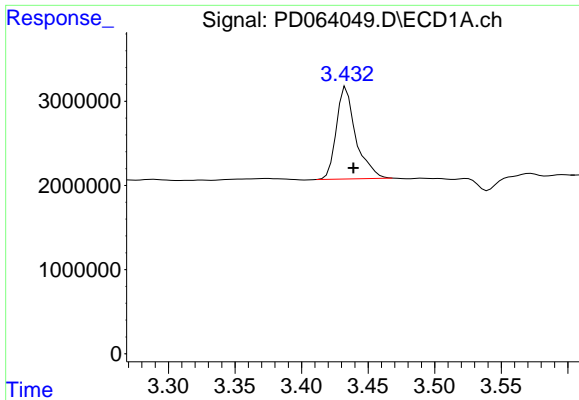
Data Path : Z:\pestpcbsrv\HPCHEM1\ECD_D\Data\PD063021\
 Data File : PD064049.D
 Signal(s) : Signal #1: ECD1A.ch Signal #2: ECD2B.ch
 Acq On : 30 Jun 2021 11:48
 Operator : AR\AJ
 Sample : M2808-18
 Misc :
 ALS Vial : 9 Sample Multiplier: 1

Integration File signal 1: autoint1.e
 Integration File signal 2: autoint2.e
 Quant Time: Jul 01 03:27:02 2021
 Quant Method : Z:\pestpcbsrv\HPCHEM1\ECD_D\Method\PD061421CLP.M
 Quant Title : GC Extractables
 QLast Update : Mon Jun 21 04:24:00 2021
 Response via : Initial Calibration
 Integrator: ChemStation

Volume Inj. : 1 µl
 Signal #1 Phase : ZB-MR2 Signal #2 Phase: ZB-MR1
 Signal #1 Info : 30M x 0.32mm x0.2 Signal #2 Info : 30M x 0.32mm x 0.50µm



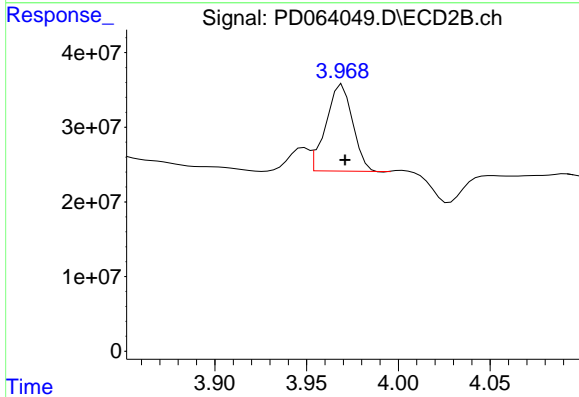
Instrument :
 ECD_D
 ClientSampleId :



#1 Tetrachloro-m-xylene

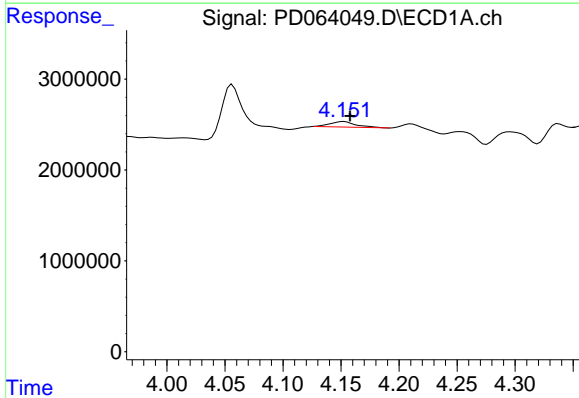
R.T.: 3.434 min
 Delta R.T.: -0.005 min
 Response: 11177866
 Conc: 7.19 ng/ml

Instrument :
 ECD_D
 ClientSampleId :



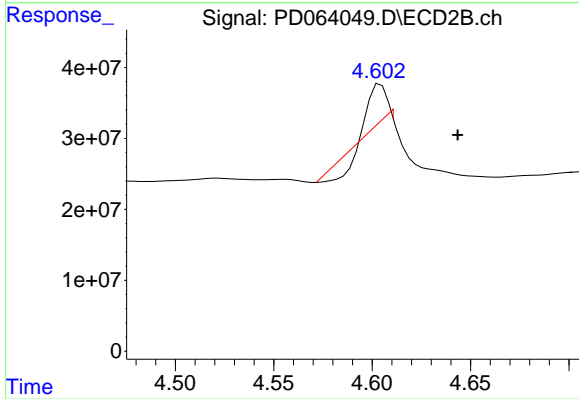
#1 Tetrachloro-m-xylene

R.T.: 3.970 min
 Delta R.T.: -0.001 min
 Response: 117371873
 Conc: 7.41 ng/ml



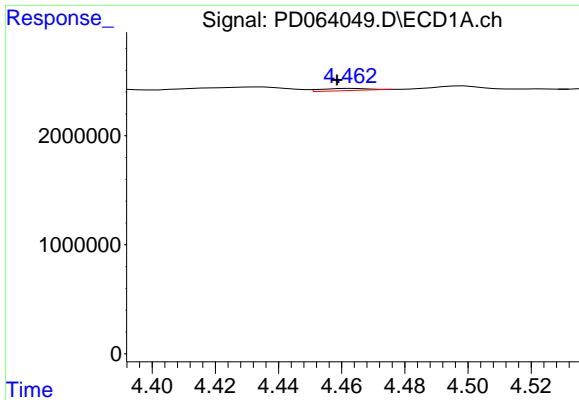
#3 gamma-BHC (Lindane)

R.T.: 4.152 min
 Delta R.T.: -0.005 min
 Response: 940059
 Conc: 0.41 ng/ml



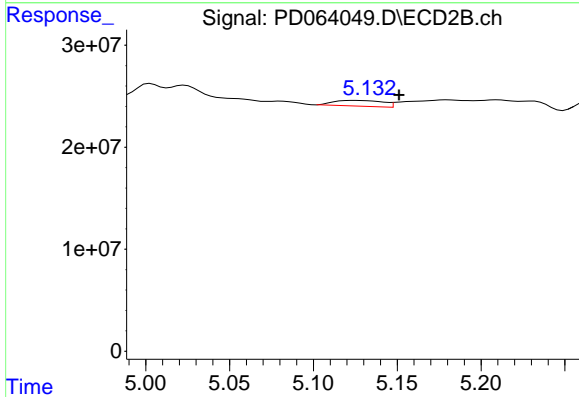
#3 gamma-BHC (Lindane)

R.T.: 4.604 min
 Delta R.T.: -0.039 min
 Response: 13722452
 Conc: 0.60 ng/ml

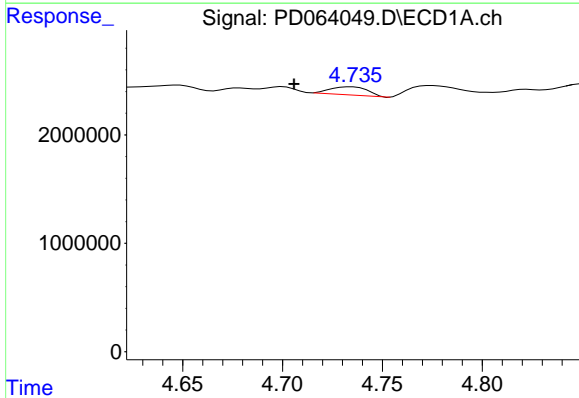


#4 Heptachlor
 R.T.: 4.464 min
 Delta R.T.: 0.005 min
 Response: 209664
 Conc: N.D.

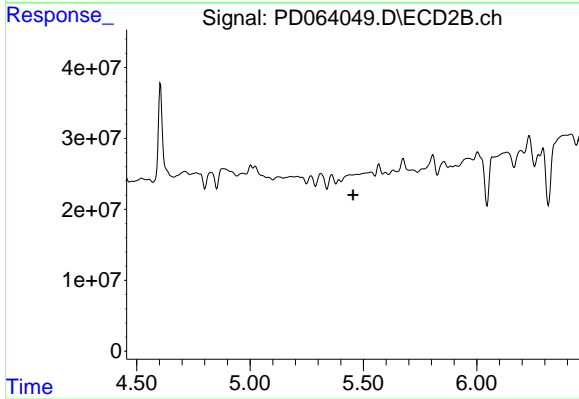
Instrument :
 ECD_D
 ClientSampleId :



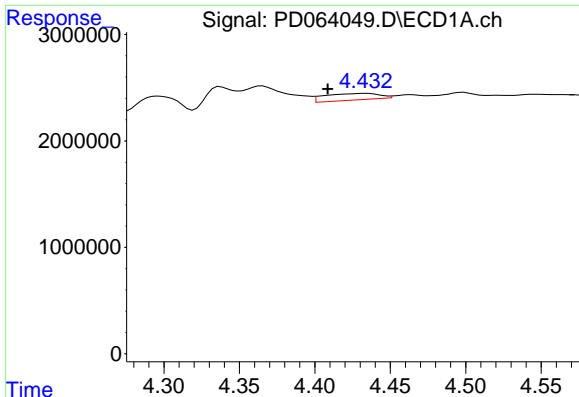
#4 Heptachlor
 R.T.: 5.124 min
 Delta R.T.: -0.027 min
 Response: 11594004
 Conc: 0.50 ng/ml



#5 Aldrin
 R.T.: 4.735 min
 Delta R.T.: 0.029 min
 Response: 978140
 Conc: 0.48 ng/ml

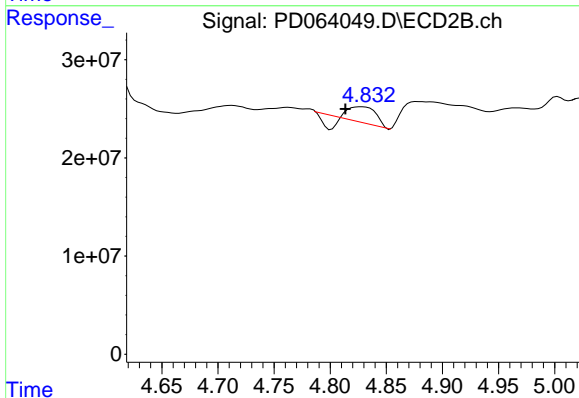


#5 Aldrin
 R.T.: 0.000 min
 Exp R.T. : 5.454 min
 Response: 0
 Conc: N.D.

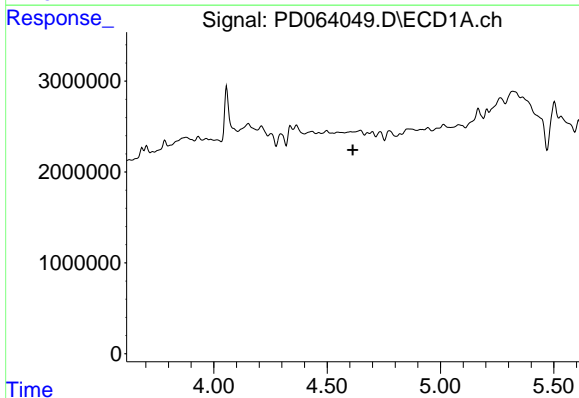


#6 beta-BHC
 R.T.: 4.434 min
 Delta R.T.: 0.025 min
 Response: 1565088
 Conc: 1.61 ng/ml

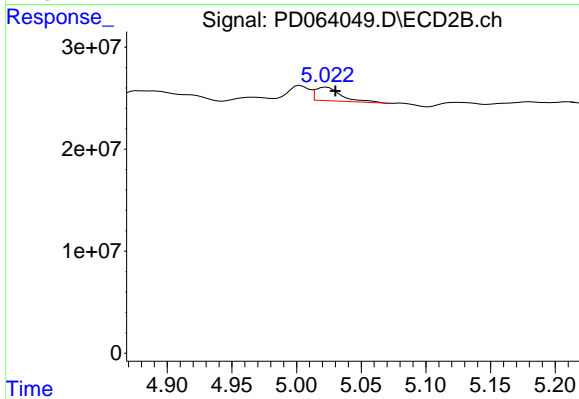
Instrument :
 ECD_D
 ClientSampleId :



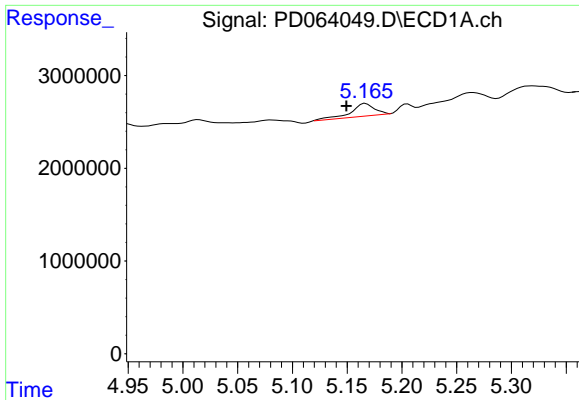
#6 beta-BHC
 R.T.: 4.829 min
 Delta R.T.: 0.015 min
 Response: 18646693
 Conc: 1.91 ng/ml



#7 delta-BHC
 R.T.: 0.000 min
 Exp R.T. : 4.613 min
 Response: 0
 Conc: N.D.

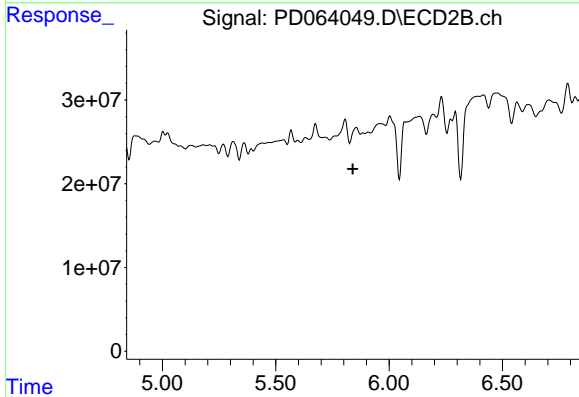


#7 delta-BHC
 R.T.: 5.023 min
 Delta R.T.: -0.007 min
 Response: 18138514
 Conc: 0.77 ng/ml

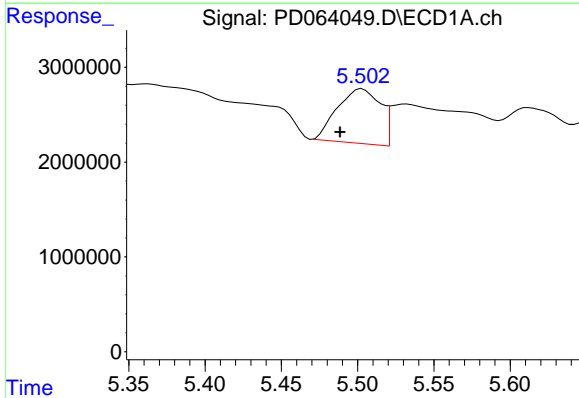


#8 Heptachlor epoxide
 R.T.: 5.167 min
 Delta R.T.: 0.018 min
 Response: 2022164
 Conc: 1.07 ng/ml

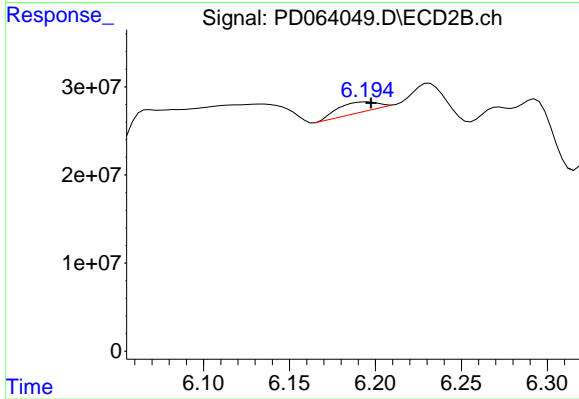
Instrument :
 ECD_D
 ClientSampled :



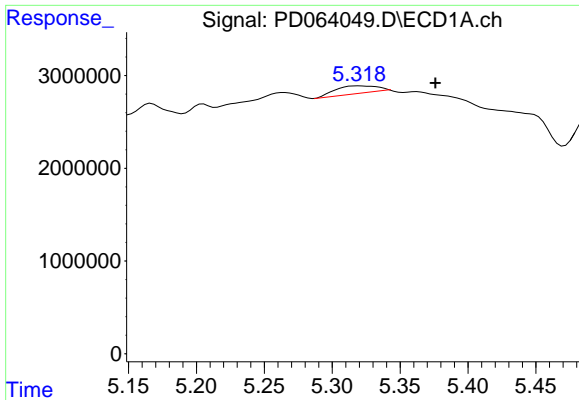
#8 Heptachlor epoxide
 R.T.: 5.856 min
 Delta R.T.: 0.015 min
 Response: -23626832
 Conc: N.D.



#9 Endosulfan I
 R.T.: 5.503 min
 Delta R.T.: 0.015 min
 Response: 11041487
 Conc: 6.03 ng/ml

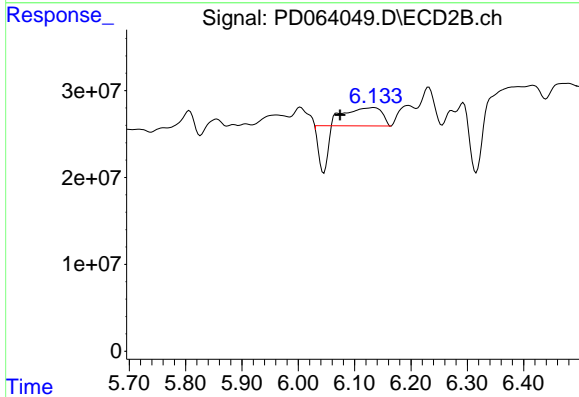


#9 Endosulfan I
 R.T.: 6.195 min
 Delta R.T.: -0.002 min
 Response: 18213881
 Conc: 0.92 ng/ml

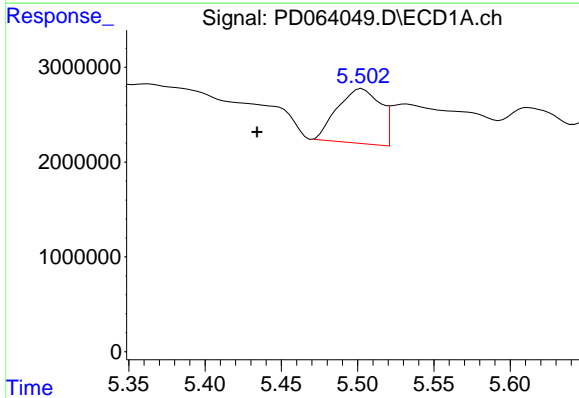


#10 trans-Chlordane
R.T.: 5.319 min
Delta R.T.: -0.057 min
Response: 2011123
Conc: 1.03 ng/ml

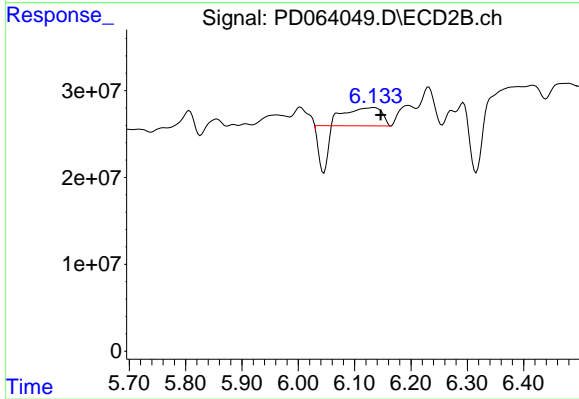
Instrument :
ECD_D
ClientSampleId :



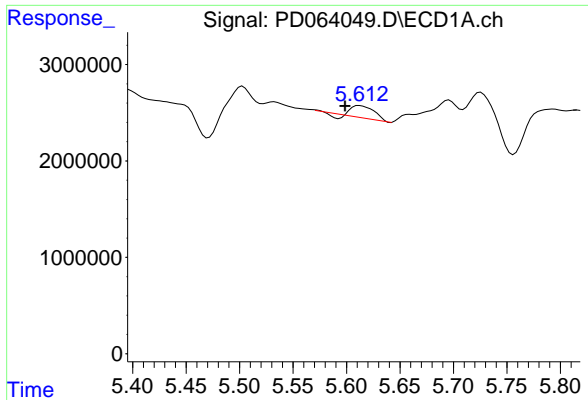
#10 trans-Chlordane
R.T.: 6.134 min
Delta R.T.: 0.060 min
Response: 41401010
Conc: 1.97 ng/ml



#11 cis-Chlordane
R.T.: 5.503 min
Delta R.T.: 0.069 min
Response: 11041487
Conc: 5.81 ng/ml

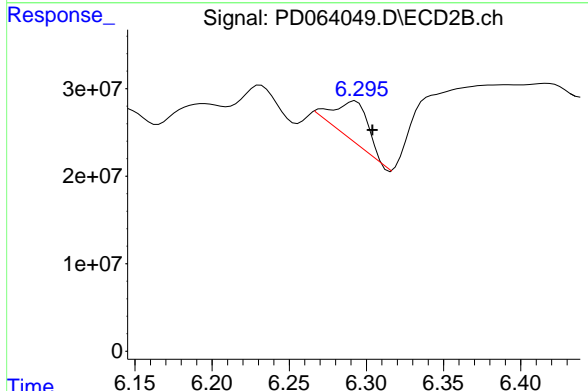


#11 cis-Chlordane
R.T.: 6.134 min
Delta R.T.: -0.013 min
Response: 41401010
Conc: 2.06 ng/ml

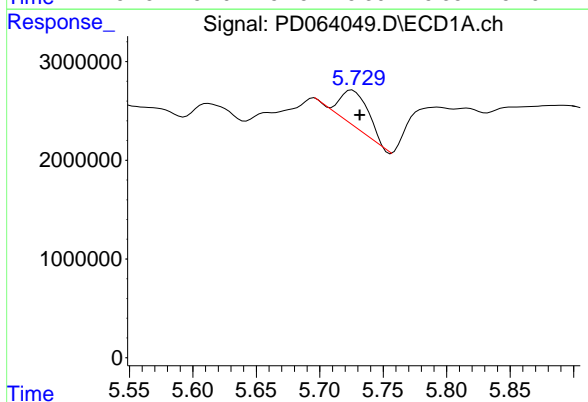


#12 4,4'-DDE
 R.T.: 5.612 min
 Delta R.T.: 0.014 min
 Response: 1729828
 Conc: 0.88 ng/ml

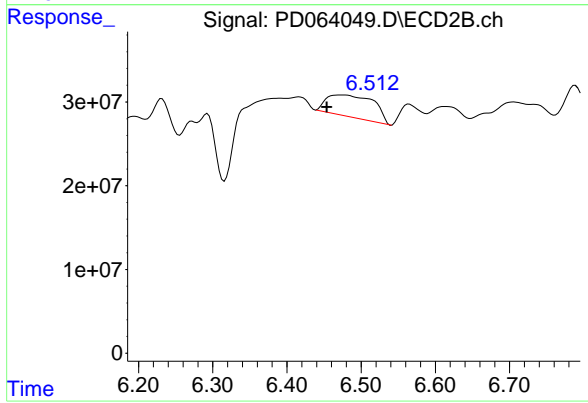
Instrument :
 ECD_D
 ClientSampled :



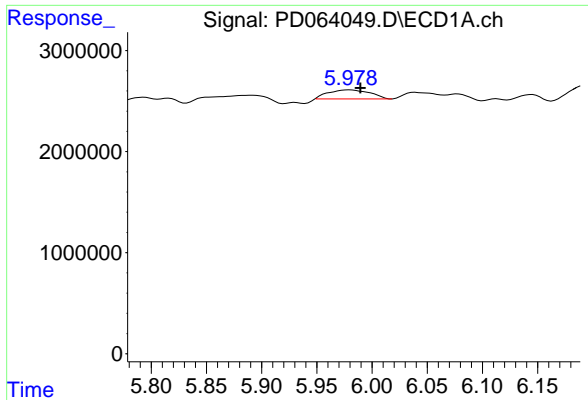
#12 4,4'-DDE
 R.T.: 6.292 min
 Delta R.T.: -0.011 min
 Response: 69446618
 Conc: 3.44 ng/ml



#13 Dieldrin
 R.T.: 5.726 min
 Delta R.T.: -0.006 min
 Response: 5678139
 Conc: 2.71 ng/ml

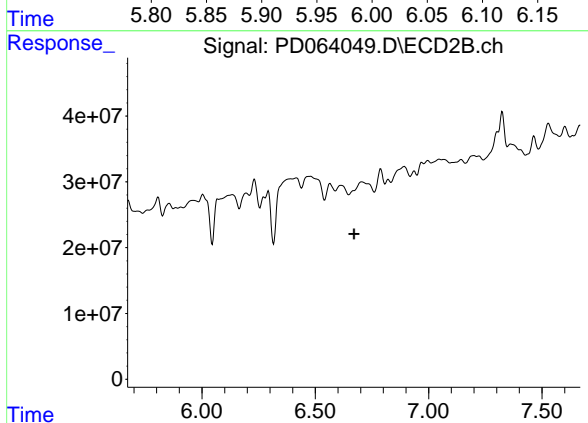


#13 Dieldrin
 R.T.: 6.477 min
 Delta R.T.: 0.024 min
 Response: 116529274
 Conc: 5.57 ng/ml

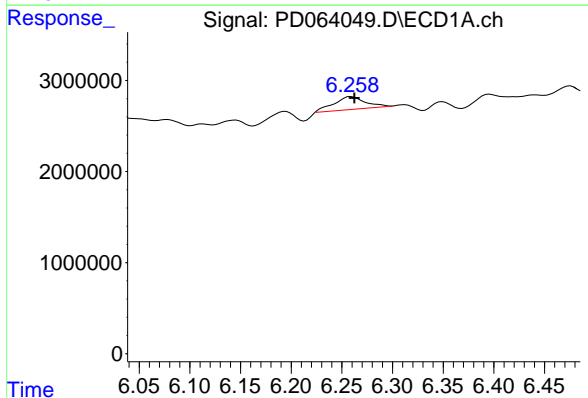


#14 Endrin
 R.T.: 5.980 min
 Delta R.T.: -0.010 min
 Response: 2365925
 Conc: 1.31 ng/ml

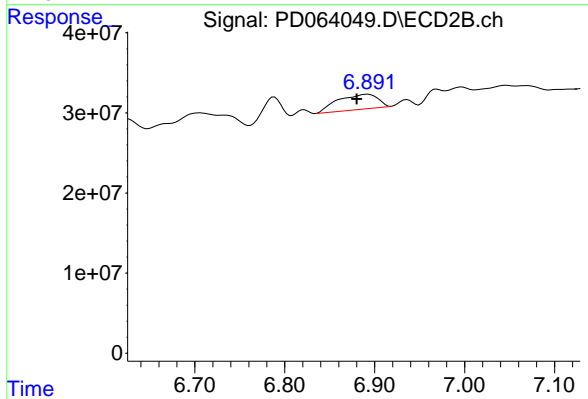
Instrument :
 ECD_D
 ClientSampled :



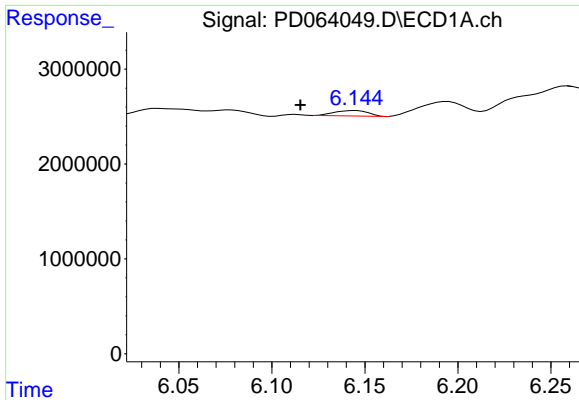
#14 Endrin
 R.T.: 6.706 min
 Delta R.T.: 0.034 min
 Response: -9319118
 Conc: N.D.



#15 Endosulfan II
 R.T.: 6.259 min
 Delta R.T.: -0.003 min
 Response: 3019567
 Conc: 1.85 ng/ml



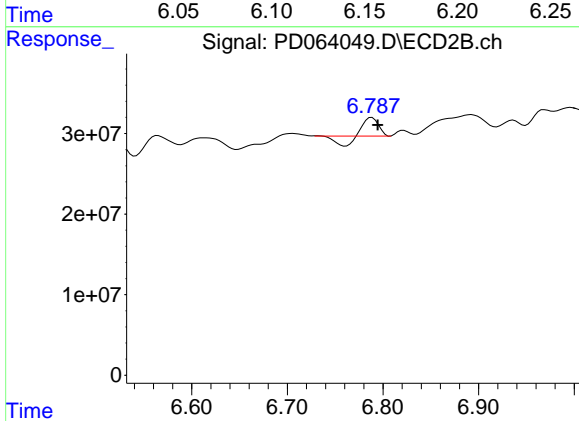
#15 Endosulfan II
 R.T.: 6.892 min
 Delta R.T.: 0.012 min
 Response: 57889001
 Conc: 3.58 ng/ml



#16 4,4'-DDD

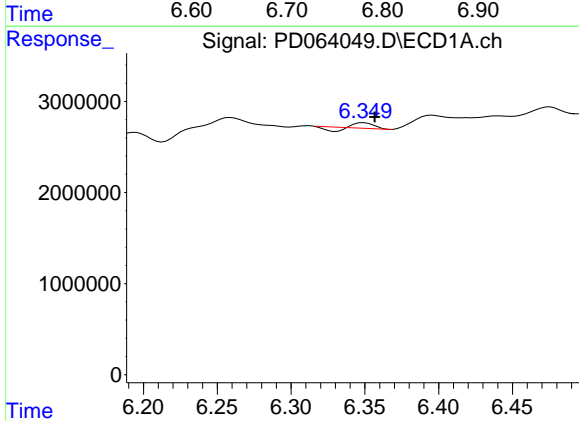
R.T.: 6.145 min
 Delta R.T.: 0.030 min
 Response: 742845
 Conc: 0.45 ng/ml

Instrument :
 ECD_D
 ClientSampleId :



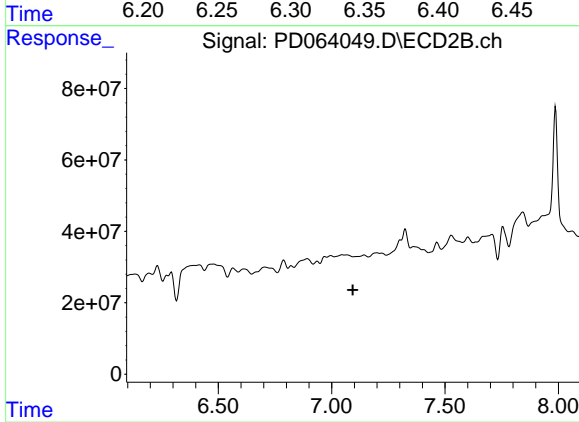
#16 4,4'-DDD

R.T.: 6.788 min
 Delta R.T.: -0.006 min
 Response: 11378462
 Conc: 0.68 ng/ml



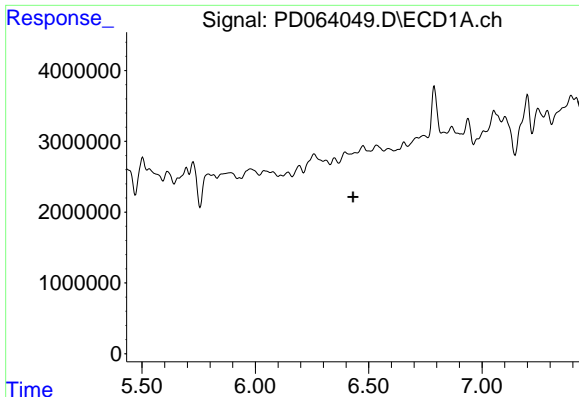
#17 4,4'-DDT

R.T.: 6.349 min
 Delta R.T.: -0.007 min
 Response: 228807
 Conc: 0.14 ng/ml



#17 4,4'-DDT

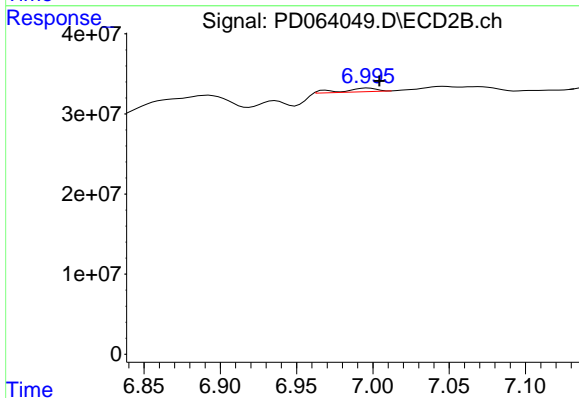
R.T.: 0.000 min
 Exp R.T. : 7.093 min
 Response: 0
 Conc: N.D.



#18 Endrin aldehyde

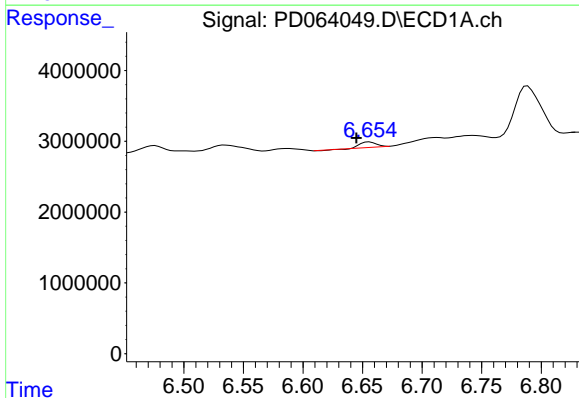
R.T.: 0.000 min
Exp R.T.: 6.432 min
Response: 0
Conc: N.D.

Instrument :
ECD_D
ClientSampleId :



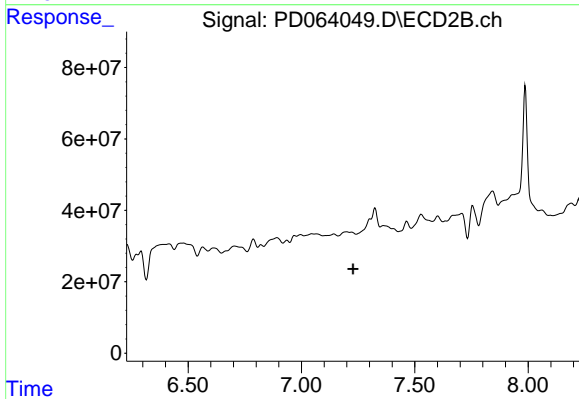
#18 Endrin aldehyde

R.T.: 6.997 min
Delta R.T.: -0.008 min
Response: 6997171
Conc: 0.50 ng/ml



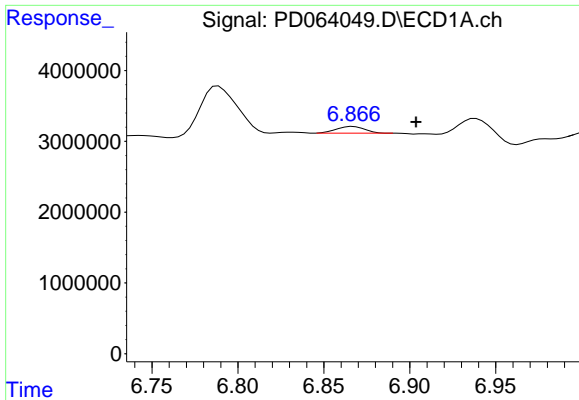
#19 Endosulfan Sulfate

R.T.: 6.656 min
Delta R.T.: 0.011 min
Response: 693544
Conc: 0.45 ng/ml



#19 Endosulfan Sulfate

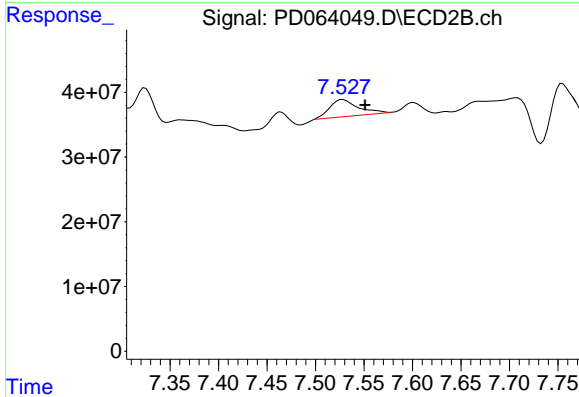
R.T.: 0.000 min
Exp R.T.: 7.227 min
Response: 0
Conc: N.D.



#20 Methoxychlor

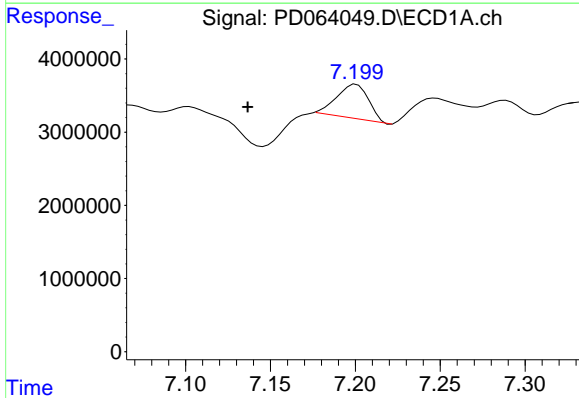
R.T.: 6.867 min
 Delta R.T.: -0.037 min
 Response: 1092900
 Conc: 1.19 ng/ml

Instrument :
 ECD_D
 ClientSampleId :



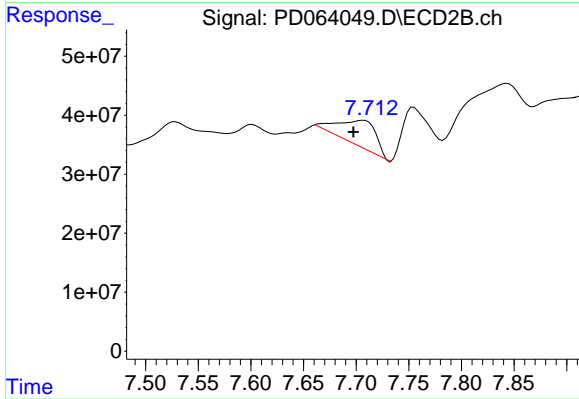
#20 Methoxychlor

R.T.: 7.528 min
 Delta R.T.: -0.023 min
 Response: 53718451
 Conc: 6.94 ng/ml



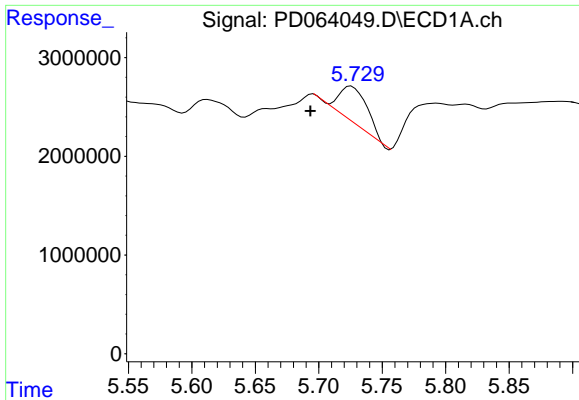
#21 Endrin ketone

R.T.: 7.200 min
 Delta R.T.: 0.064 min
 Response: 6067400
 Conc: 3.20 ng/ml



#21 Endrin ketone

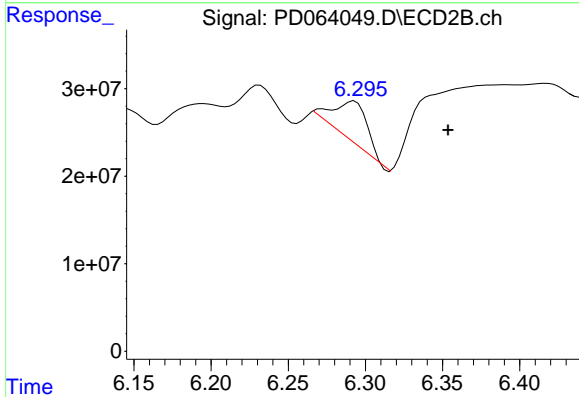
R.T.: 7.707 min
 Delta R.T.: 0.009 min
 Response: 111376906
 Conc: 7.02 ng/ml



#22 Toxaphene-1

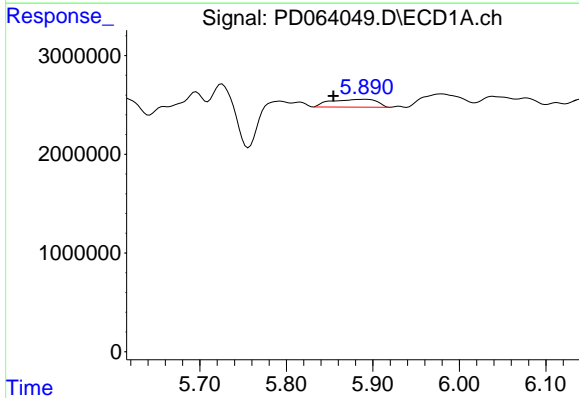
R.T.: 5.726 min
 Delta R.T.: 0.032 min
 Response: 5678139
 Conc: 478.19 ng/ml

Instrument :
 ECD_D
 ClientSampleId :



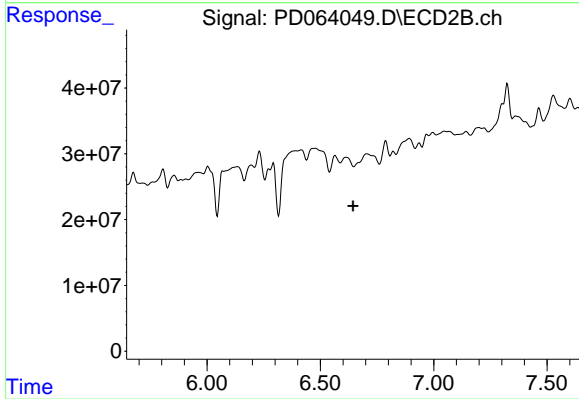
#22 Toxaphene-1

R.T.: 6.292 min
 Delta R.T.: -0.061 min
 Response: 69446618
 Conc: 796.66 ng/ml



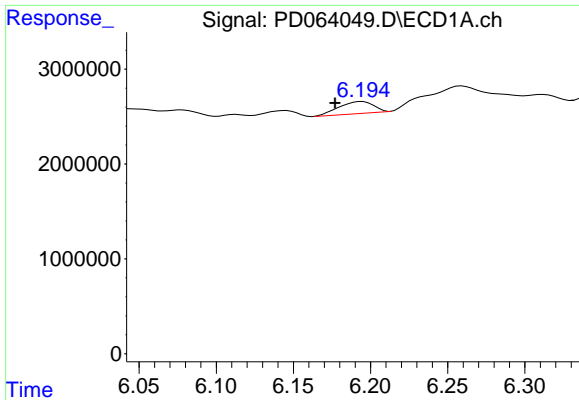
#23 Toxaphene-2

R.T.: 5.891 min
 Delta R.T.: 0.037 min
 Response: 2938659
 Conc: 244.25 ng/ml



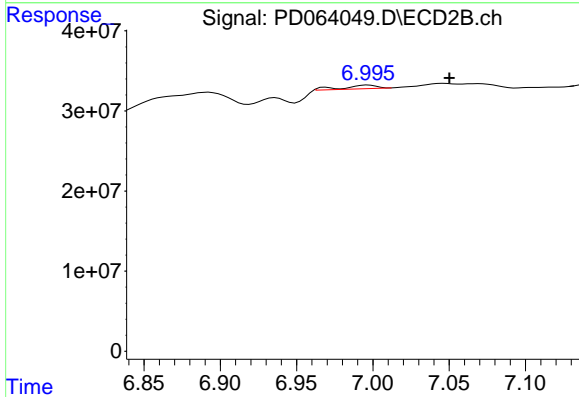
#23 Toxaphene-2

R.T.: 6.706 min
 Delta R.T.: 0.062 min
 Response: -9319118
 Conc: N.D.

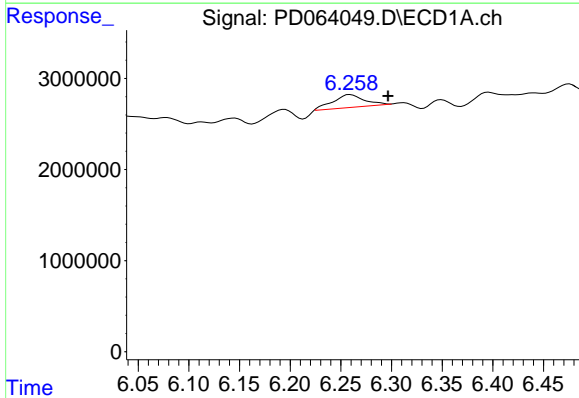


#24 Toxaphene-3
 R.T.: 6.195 min
 Delta R.T.: 0.018 min
 Response: 1977612
 Conc: 144.60 ng/ml

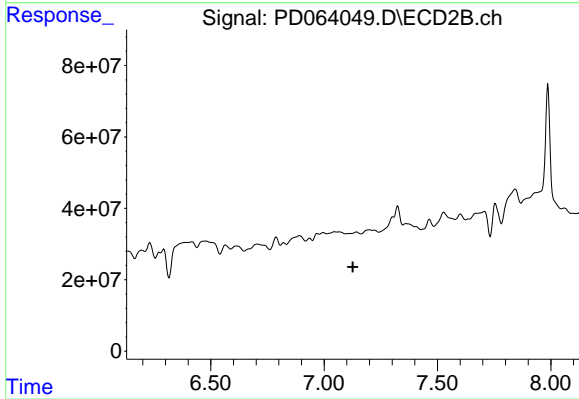
Instrument :
 ECD_D
 ClientSampleId :



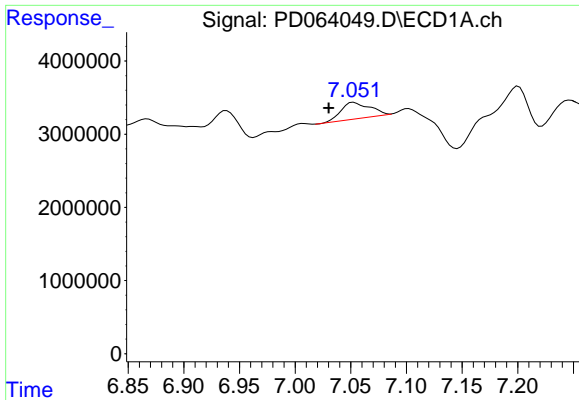
#24 Toxaphene-3
 R.T.: 6.997 min
 Delta R.T.: -0.054 min
 Response: 6997171
 Conc: 50.79 ng/ml



#25 Toxaphene-4
 R.T.: 6.259 min
 Delta R.T.: -0.037 min
 Response: 3019567
 Conc: 95.36 ng/ml

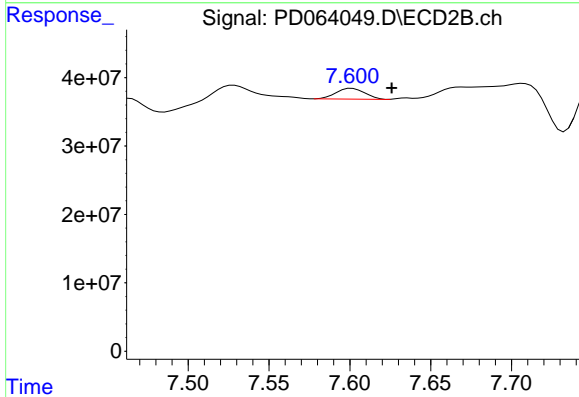


#25 Toxaphene-4
 R.T.: 0.000 min
 Exp R.T. : 7.127 min
 Response: 0
 Conc: N.D.

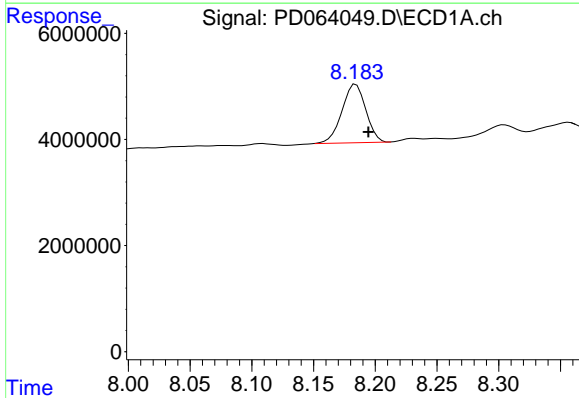


#26 Toxaphene-5
 R.T.: 7.053 min
 Delta R.T.: 0.022 min
 Response: 4014135
 Conc: 112.65 ng/ml

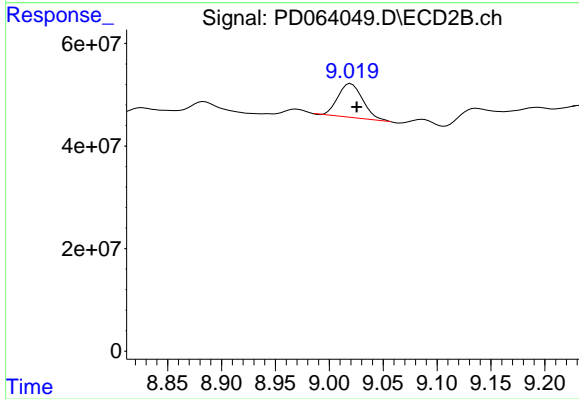
Instrument :
 ECD_D
 ClientSampleId :



#26 Toxaphene-5
 R.T.: 7.601 min
 Delta R.T.: -0.025 min
 Response: 19492970
 Conc: 114.12 ng/ml



#27 Decachlorobiphenyl
 R.T.: 8.184 min
 Delta R.T.: -0.010 min
 Response: 14811317
 Conc: 8.56 ng/ml



#27 Decachlorobiphenyl
 R.T.: 9.020 min
 Delta R.T.: -0.006 min
 Response: 103817811
 Conc: 7.49 ng/ml