

Data Path : Z:\pestpcbsrv\HPCHEM1\ECD_D\Data\PD063022\
 Data File : PD070620.D
 Signal(s) : Signal #1: ECD1A.ch Signal #2: ECD2B.ch
 Acq On : 30 Jun 2022 20:33
 Operator : AR\AJ
 Sample : RESC030
 Misc :
 ALS Vial : 2 Sample Multiplier: 1

Instrument :
 ECD_D
 ClientSampleId :
 RESC032

Integration File signal 1: autoint1.e
 Integration File signal 2: autoint2.e
 Quant Time: Jul 01 03:24:24 2022
 Quant Method : Z:\pestpcbsrv\HPCHEM1\ECD_D\Method\PD063022CLP-TCLP.M
 Quant Title : GC Extractables
 QLast Update : Fri Jul 01 03:19:09 2022
 Response via : Initial Calibration
 Integrator: ChemStation

Volume Inj. : 1 µl
 Signal #1 Phase : ZB-MR2 Signal #2 Phase: ZB-MR1
 Signal #1 Info : 30M x 0.32mm x0.2 Signal #2 Info : 30M x 0.32mm x 0.50µm

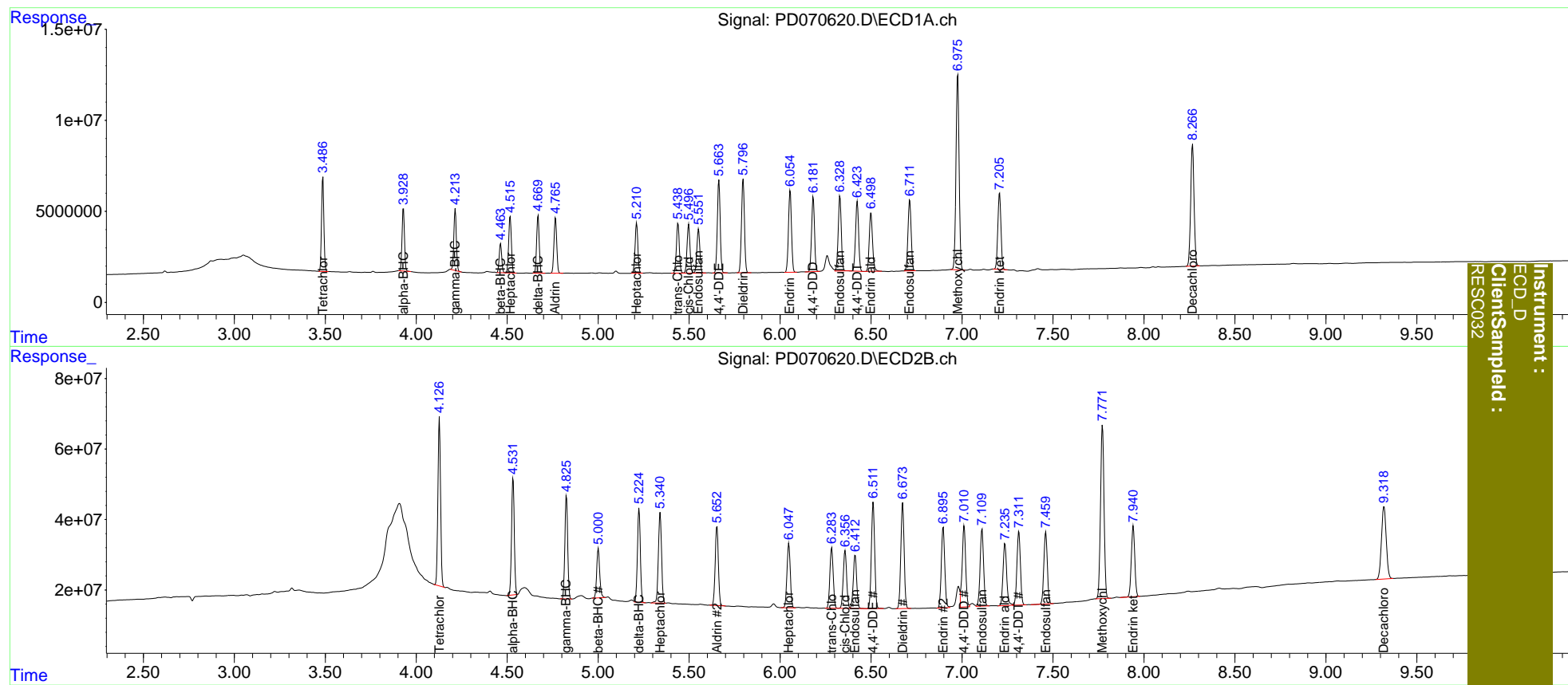
Compound	RT#1	RT#2	Resp#1	Resp#2	ng/ml	ng/ml
System Monitoring Compounds						
1) SA Tetrachlo...	3.487	4.128	46304151	481.6E6	20.577	20.848
27) SA Decachlor...	8.267	9.320	86382492	374.7E6	40.810	59.302 #
Target Compounds						
2) A alpha-BHC	3.930	4.533	32061853	345.5E6	9.964	10.642
3) MA gamma-BHC...	4.215	4.826	31826719	316.5E6	10.209	10.755
4) MA Heptachlor	4.517	5.341	31846215	312.0E6	10.212	11.245
5) MB Aldrin	4.766	5.653	31956176	273.0E6	10.363	11.056
6) B beta-BHC	4.464	5.001	15279428	161.7E6	10.706	11.586
7) B delta-BHC	4.670	5.225	31062498	295.7E6	10.033	10.807
8) B Heptachlo...	5.212	6.048	29336322	231.8E6	10.335	11.061
9) A Endosulfan I	5.552	6.413	27169105	195.4E6	10.329	11.306
10) B trans-Chl...	5.439	6.284	30385483	220.1E6	10.231	11.038
11) B cis-Chlor...	5.498	6.358	29740909	212.5E6	10.333	11.040
12) B 4,4'-DDE	5.664	6.512	55766353	380.2E6	19.939	21.813
13) MA Dieldrin	5.797	6.674	57929571	378.7E6	19.832	21.792
14) MA Endrin	6.056	6.897	51783320	298.6E6	20.596	22.941
15) B Endosulfa...	6.329	7.110	48105213	289.3E6	20.580	23.080
16) A 4,4'-DDD	6.182	7.012	45908273	309.8E6	19.878	23.539
17) MA 4,4'-DDT	6.424	7.313	44837640	279.1E6	19.561	23.305
18) B Endrin al...	6.500	7.236	40409447	244.0E6	21.093	23.784
19) B Endosulfa...	6.713	7.460	46815885	269.1E6	20.500	23.268
20) A Methoxychlor	6.977	7.772	127.9E6	658.5E6	104.068	121.028
21) B Endrin ke...	7.207	7.941	50541335	264.3E6	20.611	24.525

(f)=RT Delta > 1/2 Window (#)=Amounts differ by > 25% (m)=manual int.

Data Path : Z:\pestpcbsrv\HPCHEM1\ECD_D\Data\PD063022\
 Data File : PD070620.D
 Signal(s) : Signal #1: ECD1A.ch Signal #2: ECD2B.ch
 Acq On : 30 Jun 2022 20:33
 Operator : AR\AJ
 Sample : RESC030
 Misc :
 ALS Vial : 2 Sample Multiplier: 1

Integration File signal 1: autoint1.e
 Integration File signal 2: autoint2.e
 Quant Time: Jul 01 03:24:24 2022
 Quant Method : Z:\pestpcbsrv\HPCHEM1\ECD_D\Method\PD063022CLP-TCLP.M
 Quant Title : GC Extractables
 QLast Update : Fri Jul 01 03:19:09 2022
 Response via : Initial Calibration
 Integrator: ChemStation

Volume Inj. : 1 µl
 Signal #1 Phase : ZB-MR2 Signal #2 Phase: ZB-MR1
 Signal #1 Info : 30M x 0.32mm x0.2 Signal #2 Info : 30M x 0.32mm x 0.50µm



Instrument :
 ECD_D
 Client/Sample :
 RESC032