

Data Path : Z:\pestpcbsrv\HPCHEM1\ECD\_D\Data\PD063022\  
 Data File : PD070644.D  
 Signal(s) : Signal #1: ECD1A.ch Signal #2: ECD2B.ch  
 Acq On : 01 Jul 2022 02:13  
 Operator : AR\AJ  
 Sample : N3392-21 10X  
 Misc :  
 ALS Vial : 25 Sample Multiplier: 1

Instrument :  
 ECD\_D  
 ClientSampleId :  
 EXEZ6

Integration File signal 1: autoint1.e  
 Integration File signal 2: autoint2.e  
 Quant Time: Jul 01 03:53:52 2022  
 Quant Method : Z:\pestpcbsrv\HPCHEM1\ECD\_D\Method\PD063022CLP-TCLP.M  
 Quant Title : GC Extractables  
 QLast Update : Fri Jul 01 03:19:09 2022  
 Response via : Initial Calibration  
 Integrator: ChemStation

Volume Inj. : 1 µl  
 Signal #1 Phase : ZB-MR2 Signal #2 Phase: ZB-MR1  
 Signal #1 Info : 30M x 0.32mm x0.2 Signal #2 Info : 30M x 0.32mm x 0.50µm

| Compound                    | RT#1  | RT#2  | Resp#1   | Resp#2  | ng/ml  | ng/ml  |
|-----------------------------|-------|-------|----------|---------|--------|--------|
| -----                       |       |       |          |         |        |        |
| System Monitoring Compounds |       |       |          |         |        |        |
| 1) SA Tetrachlo...          | 3.487 | 4.126 | 42755879 | 451.5E6 | 19.000 | 19.543 |
| 27) SA Decachlor...         | 8.266 | 9.318 | 68624658 | 202.4E6 | 32.421 | 32.026 |

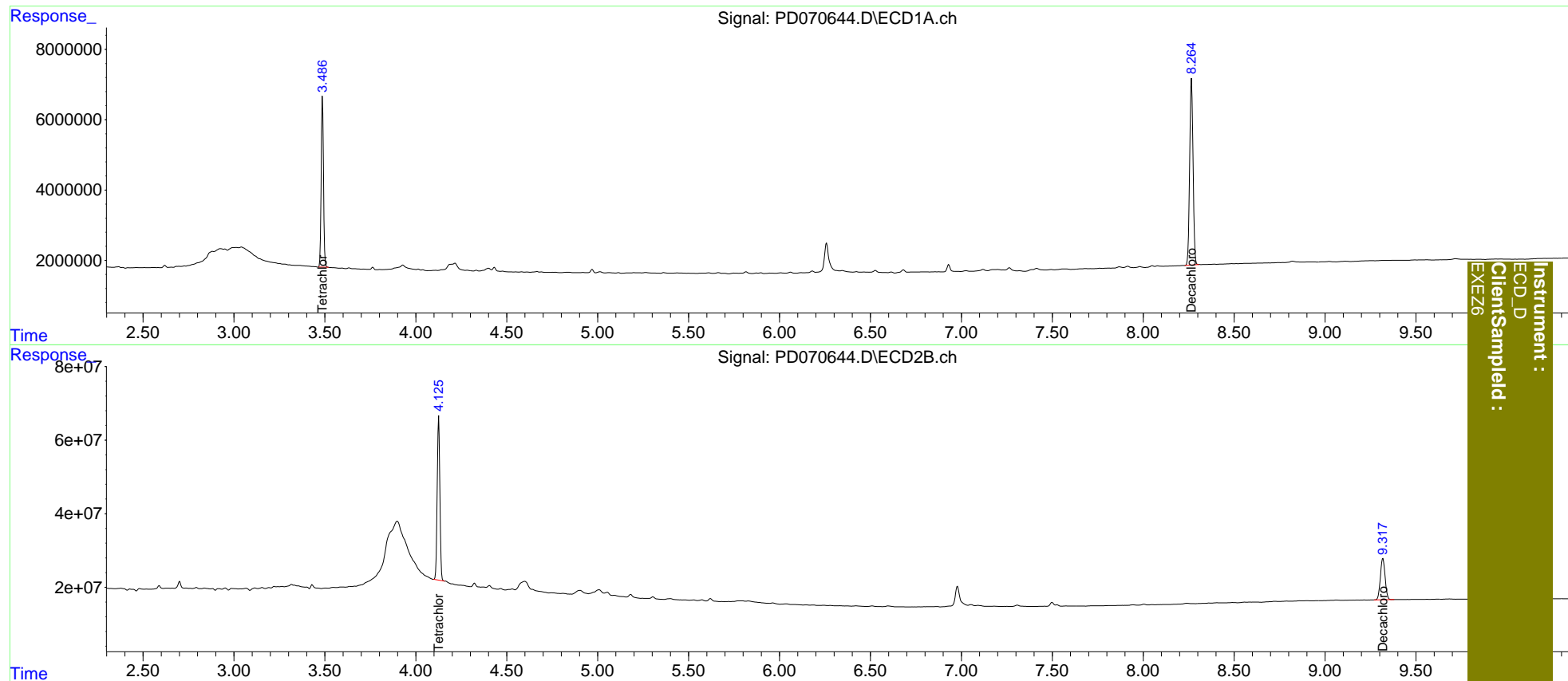
Target Compounds

(f)=RT Delta > 1/2 Window (#)=Amounts differ by > 25% (m)=manual int.

Data Path : Z:\pestpcbsrv\HPCHEM1\ECD\_D\Data\PD063022\  
 Data File : PD070644.D  
 Signal(s) : Signal #1: ECD1A.ch Signal #2: ECD2B.ch  
 Acq On : 01 Jul 2022 02:13  
 Operator : AR\AJ  
 Sample : N3392-21 10X  
 Misc :  
 ALS Vial : 25 Sample Multiplier: 1

Integration File signal 1: autoint1.e  
 Integration File signal 2: autoint2.e  
 Quant Time: Jul 01 03:53:52 2022  
 Quant Method : Z:\pestpcbsrv\HPCHEM1\ECD\_D\Method\PD063022CLP-TCLP.M  
 Quant Title : GC Extractables  
 QLast Update : Fri Jul 01 03:19:09 2022  
 Response via : Initial Calibration  
 Integrator: ChemStation

Volume Inj. : 1 µl  
 Signal #1 Phase : ZB-MR2 Signal #2 Phase: ZB-MR1  
 Signal #1 Info : 30M x 0.32mm x0.2 Signal #2 Info : 30M x 0.32mm x 0.50µm



Instrument :  
 ECD\_D  
 ClientSampled :  
 EXEZ6