

Data Path : Z:\pestpcbsrv\HPCHEM1\ECD_D\Data\PD070119\
 Data File : PD053792.D
 Signal(s) : Signal #1: ECD1A.CH Signal #2: ECD2B.CH
 Acq On : 01 Jul 2019 13:58
 Operator : SM\AJ
 Sample : K3561-08
 Misc :
 ALS Vial : 23 Sample Multiplier: 1

Instrument :
 ECD_D
 ClientSampleId :
 PST-015-SW109-062519

Integration File signal 1: autoint1.e
 Integration File signal 2: autoint2.e
 Quant Time: Jul 02 01:03:48 2019
 Quant Method : Z:\pestpcbsrv\HPCHEM1\ECD_D\Method\PD062119.M
 Quant Title : GC Extractables
 QLast Update : Sat Jun 22 00:19:03 2019
 Response via : Initial Calibration
 Integrator: ChemStation 6890 Scale Mode: Large solvent peaks clipped

Volume Inj. : 2 µl
 Signal #1 Phase : ZB-MR2 Signal #2 Phase: ZB-MR1
 Signal #1 Info : 30M x 0.32mm x0.2 Signal #2 Info : 30M x 0.32mm x 0.50µm

Compound	RT#1	RT#2	Resp#1	Resp#2	ng/ml	ng/ml

System Monitoring Compounds						
1) SA Tetrachlo...	3.314	3.983	14547918	22108616	20.583	20.201
28) SA Decachlor...	8.009	9.026	9809439	13226171	15.089	13.078
Target Compounds						
3) MA gamma-BHC...	4.026	0.000	2725568	0	2.762	N.D. #
9) A Endosulfan I	5.348f	0.000	4797156	0	5.889	N.D. #
10) B gamma-Chl...	0.000	6.067f	0	4960621	N.D.	3.150 #
11) B alpha-Chl...	0.000	6.157	0	2046776	N.D.	1.328 #
12) B 4,4'-DDE	5.438	6.309	16415646	20933358	21.715	15.643 #
13) MA Dieldrin	5.568	6.486f	4440524	1595550	4.985	1.060 #
14) MA Endrin	5.821	6.703f	2009838	2065437	2.433	1.632 #
15) B Endosulfa...	0.000	6.898	0	2474991	N.D.	1.839 #
16) A 4,4'-DDD	0.000	6.794	0	4249349	N.D.	4.166 #
17) MA 4,4'-DDT	6.186	7.095	12313948	22250201	20.085	20.750
20) A Methoxychlor	6.767f	0.000	5387598	0	19.835	N.D. #
23) Chlordane-1	0.000	4.965	0	994315	N.D.	20.076 #
25) Chlordane-3	0.000	6.067f	0	4960621	N.D.	24.966 #
26) Chlordane-4	0.000	6.157	0	2046776	N.D.	8.727 #

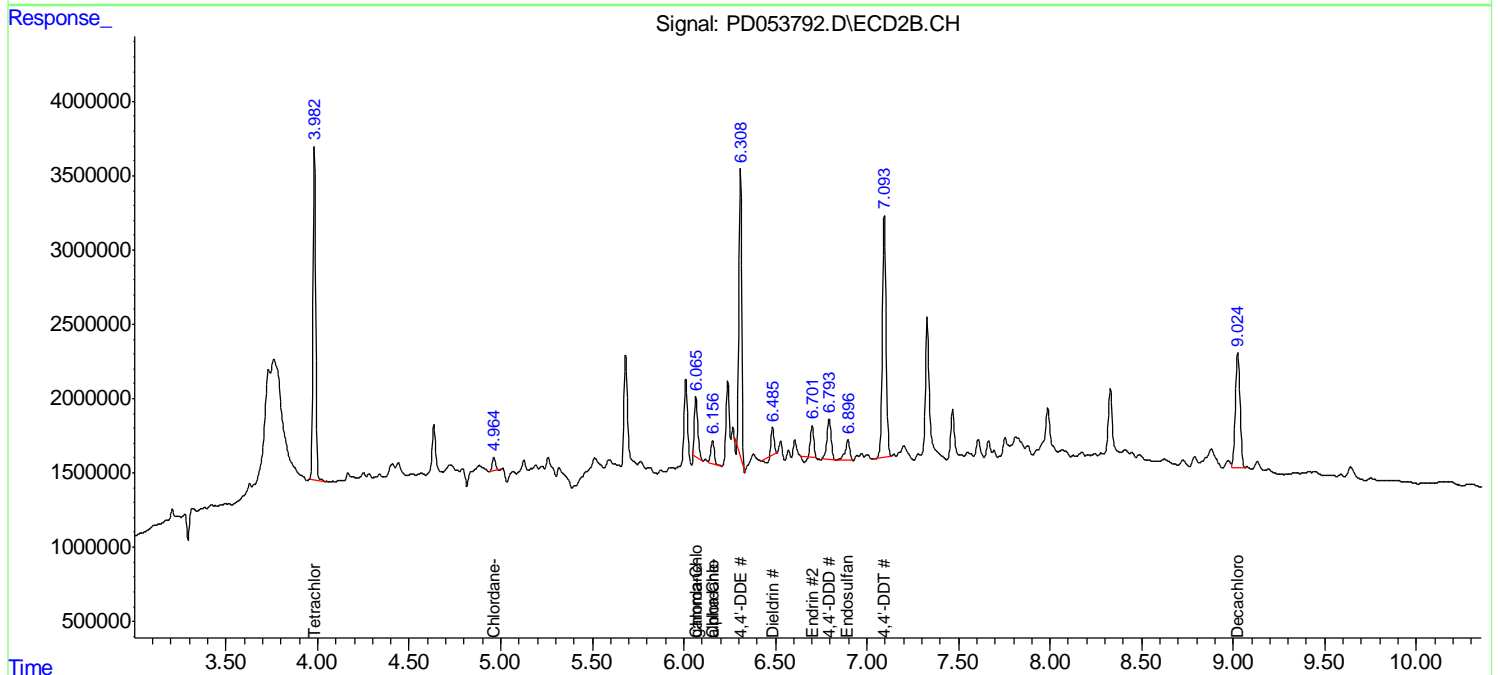
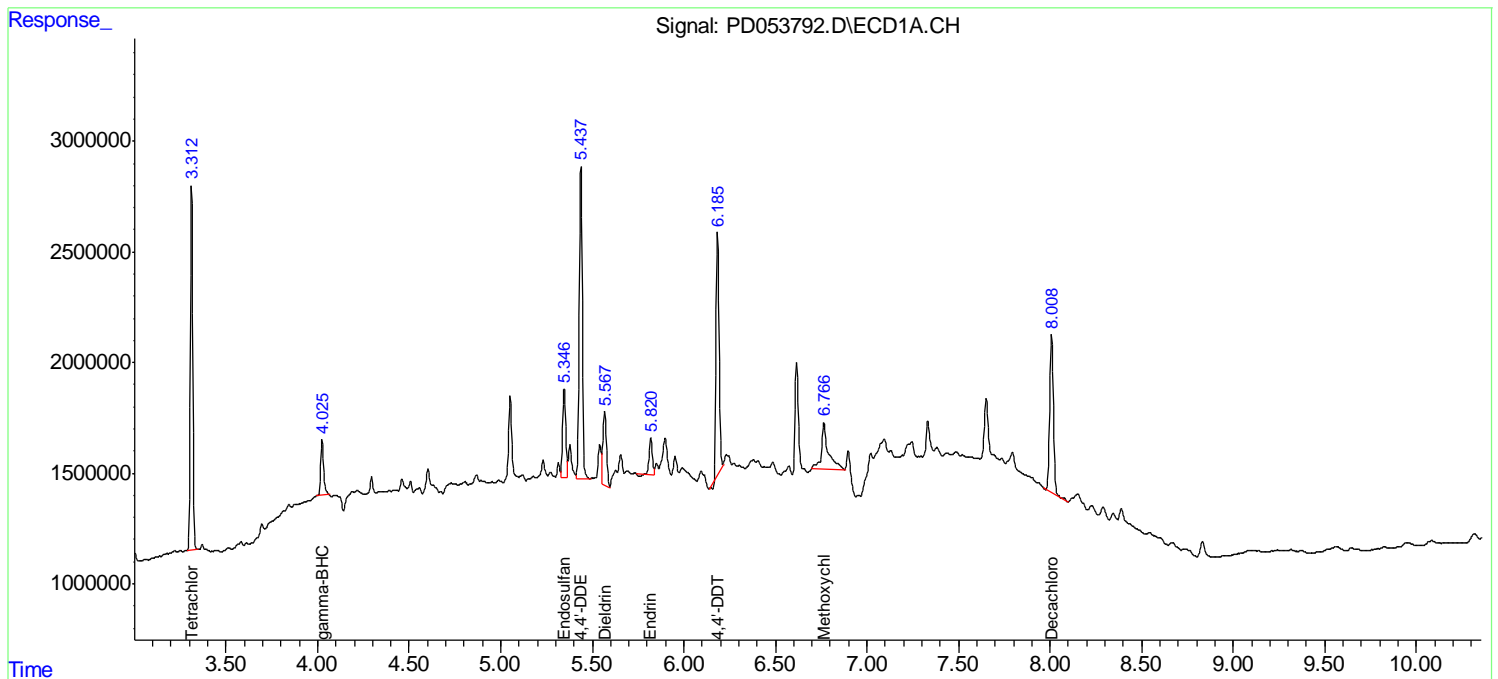
(f)=RT Delta > 1/2 Window (#)=Amounts differ by > 25% (m)=manual int.

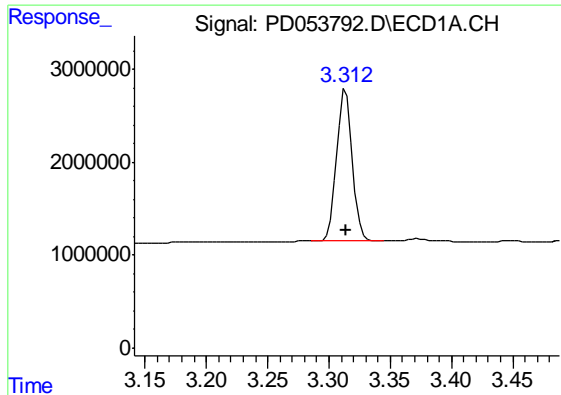
Data Path : Z:\pestpcbsrv\HPCHEM1\ECD_D\Data\PD070119\
 Data File : PD053792.D
 Signal(s) : Signal #1: ECD1A.CH Signal #2: ECD2B.CH
 Acq On : 01 Jul 2019 13:58
 Operator : SM\AJ
 Sample : K3561-08
 Misc :
 ALS Vial : 23 Sample Multiplier: 1

Instrument :
 ECD_D
Client Sampled :
 PST-015-SW109-062519

Integration File signal 1: autoint1.e
 Integration File signal 2: autoint2.e
 Quant Time: Jul 02 01:03:48 2019
 Quant Method : Z:\pestpcbsrv\HPCHEM1\ECD_D\Method\PD062119.M
 Quant Title : GC Extractables
 QLast Update : Sat Jun 22 00:19:03 2019
 Response via : Initial Calibration
 Integrator: ChemStation 6890 Scale Mode: Large solvent peaks clipped

Volume Inj. : 2 µl
 Signal #1 Phase : ZB-MR2 Signal #2 Phase: ZB-MR1
 Signal #1 Info : 30M x 0.32mm x0.2 Signal #2 Info : 30M x 0.32mm x 0.50µm

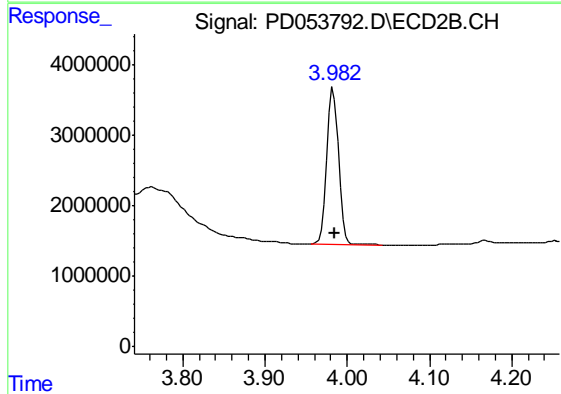




#1 Tetrachloro-m-xylene

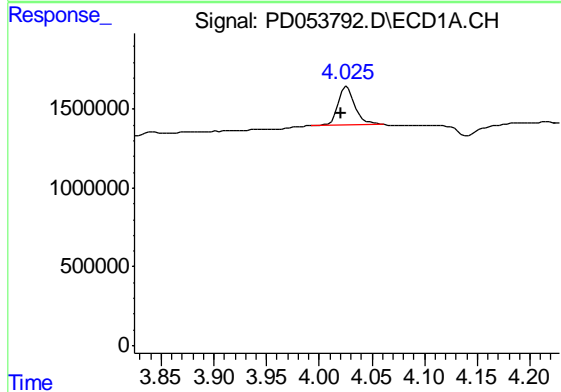
R.T.: 3.314 min
 Delta R.T.: 0.000 min
 Response: 14547918
 Conc: 20.58 ng/ml

Instrument :
 ECD_D
 ClientSampleId :
 PST-015-SW109-062519



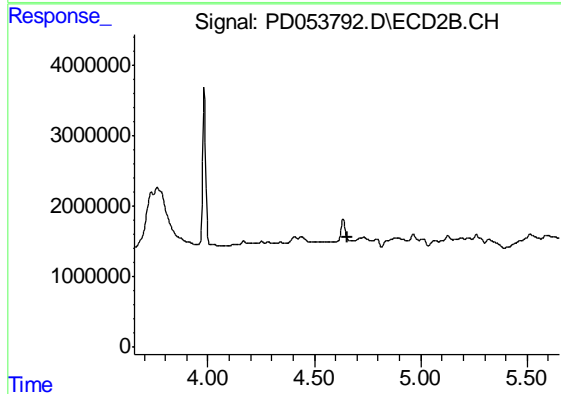
#1 Tetrachloro-m-xylene

R.T.: 3.983 min
 Delta R.T.: 0.000 min
 Response: 22108616
 Conc: 20.20 ng/ml



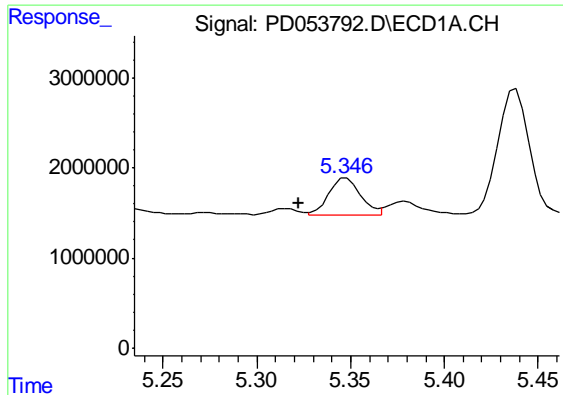
#3 gamma-BHC (Lindane)

R.T.: 4.026 min
 Delta R.T.: 0.005 min
 Response: 2725568
 Conc: 2.76 ng/ml



#3 gamma-BHC (Lindane)

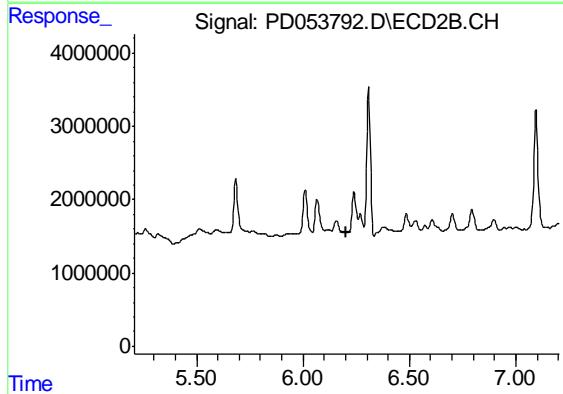
R.T.: 0.000 min
 Exp R.T. : 4.654 min
 Response: 0
 Conc: N.D.



#9 Endosulfan I

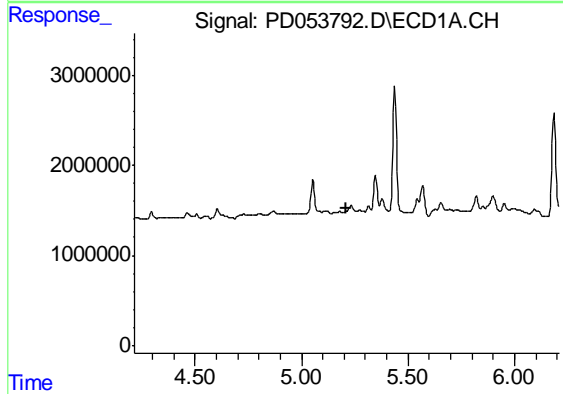
R.T.: 5.348 min
 Delta R.T.: 0.025 min
 Response: 4797156
 Conc: 5.89 ng/ml

Instrument :
 ECD_D
 ClientSampleId :
 PST-015-SW109-062519



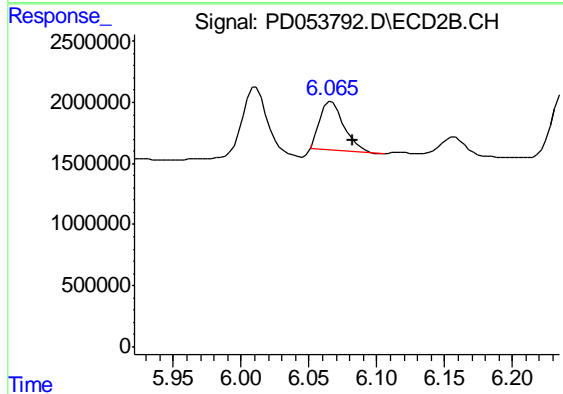
#9 Endosulfan I

R.T.: 0.000 min
 Exp R.T. : 6.205 min
 Response: 0
 Conc: N.D.



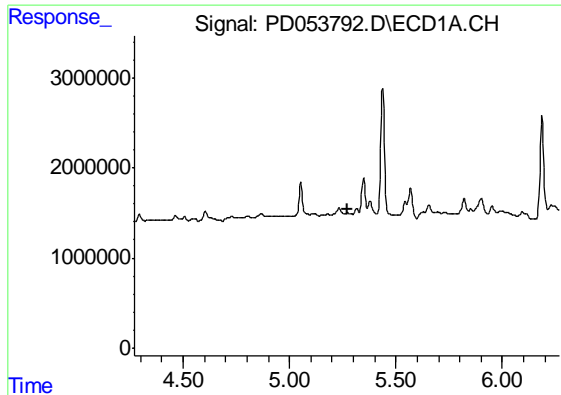
#10 gamma-Chlordane

R.T.: 0.000 min
 Exp R.T. : 5.213 min
 Response: 0
 Conc: N.D.



#10 gamma-Chlordane

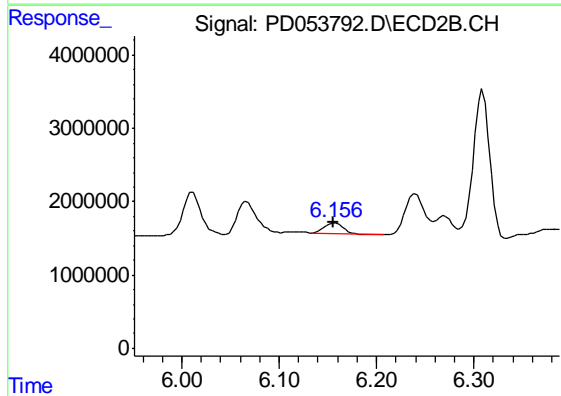
R.T.: 6.067 min
 Delta R.T.: -0.015 min
 Response: 4960621
 Conc: 3.15 ng/ml



#11 alpha-Chlordane

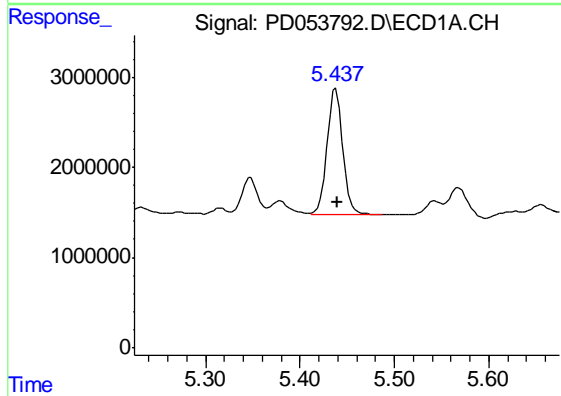
R.T.: 0.000 min
 Exp R.T. : 5.270 min
 Response: 0
 Conc: N.D.

Instrument :
 ECD_D
 ClientSampleId :
 PST-015-SW109-062519



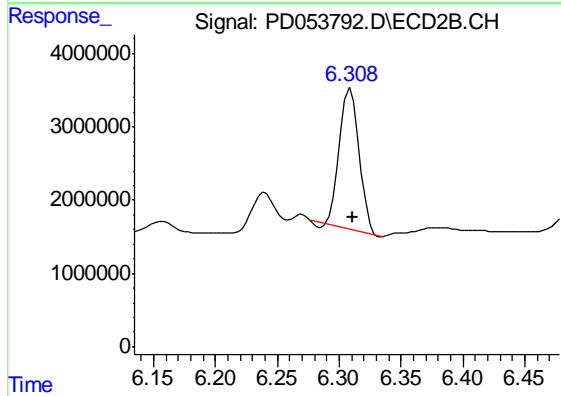
#11 alpha-Chlordane

R.T.: 6.157 min
 Delta R.T.: 0.002 min
 Response: 2046776
 Conc: 1.33 ng/ml



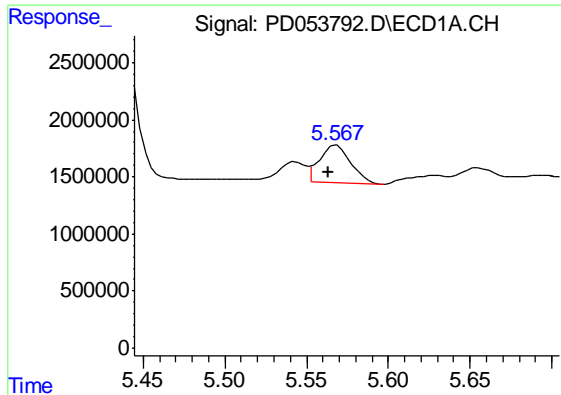
#12 4,4'-DDE

R.T.: 5.438 min
 Delta R.T.: -0.001 min
 Response: 16415646
 Conc: 21.72 ng/ml



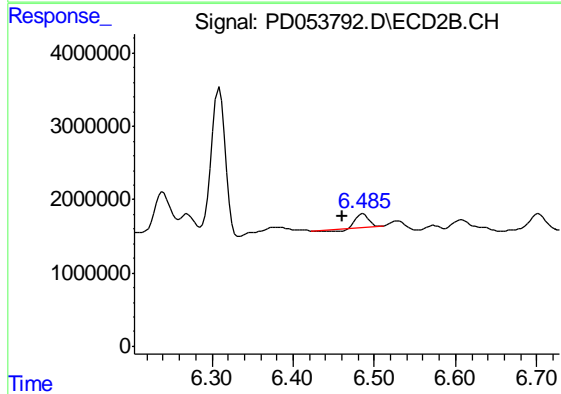
#12 4,4'-DDE

R.T.: 6.309 min
 Delta R.T.: -0.002 min
 Response: 20933358
 Conc: 15.64 ng/ml

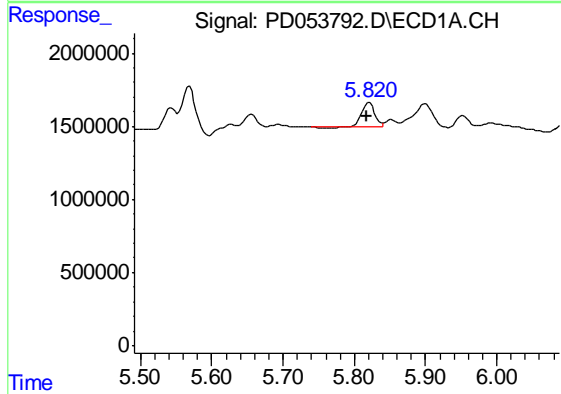


#13 Dieldrin
 R.T.: 5.568 min
 Delta R.T.: 0.005 min
 Response: 4440524
 Conc: 4.98 ng/ml

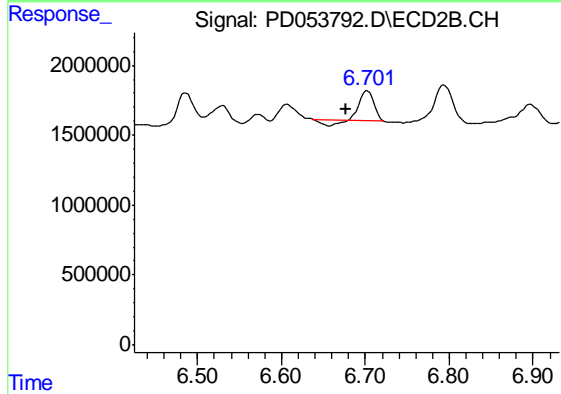
Instrument :
 ECD_D
 ClientSampleId :
 PST-015-SW109-062519



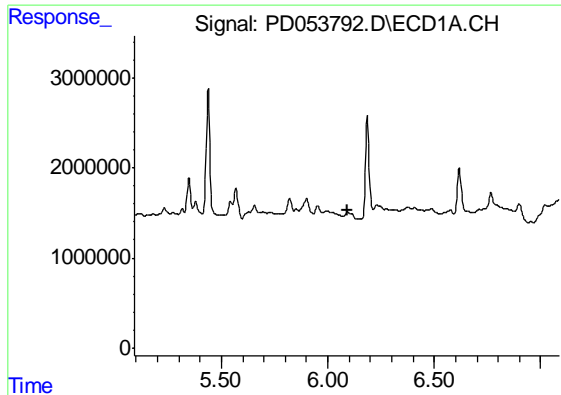
#13 Dieldrin
 R.T.: 6.486 min
 Delta R.T.: 0.026 min
 Response: 1595550
 Conc: 1.06 ng/ml



#14 Endrin
 R.T.: 5.821 min
 Delta R.T.: 0.004 min
 Response: 2009838
 Conc: 2.43 ng/ml



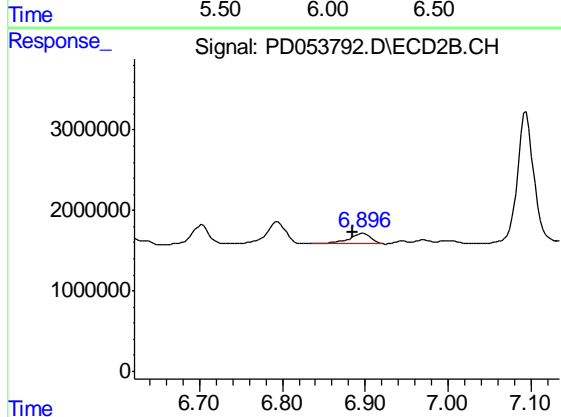
#14 Endrin
 R.T.: 6.703 min
 Delta R.T.: 0.025 min
 Response: 2065437
 Conc: 1.63 ng/ml



#15 Endosulfan II

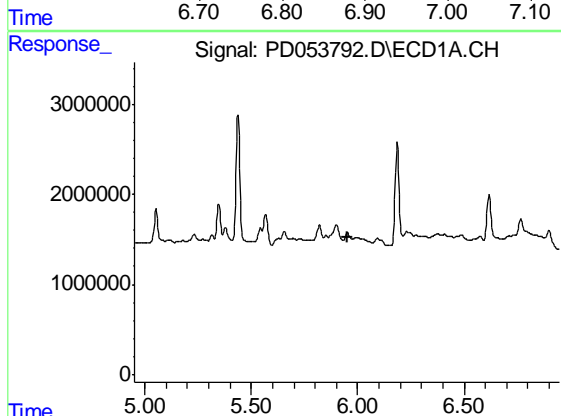
R.T.: 0.000 min
 Exp R.T. : 6.091 min
 Response: 0
 Conc: N.D.

Instrument :
 ECD_D
 ClientSampleId :
 PST-015-SW109-062519



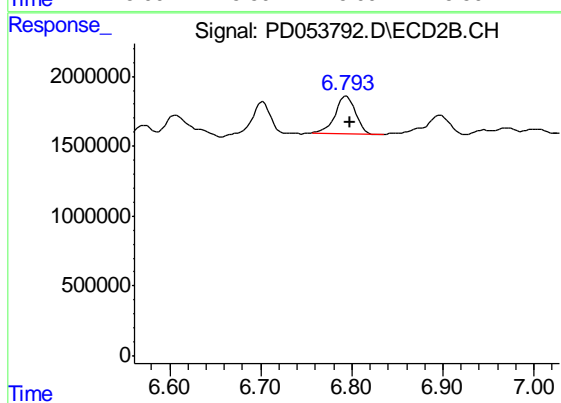
#15 Endosulfan II

R.T.: 6.898 min
 Delta R.T.: 0.013 min
 Response: 2474991
 Conc: 1.84 ng/ml



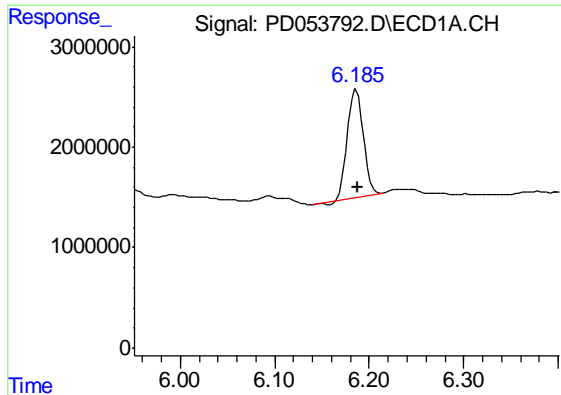
#16 4,4'-DDD

R.T.: 0.000 min
 Exp R.T. : 5.951 min
 Response: 0
 Conc: N.D.



#16 4,4'-DDD

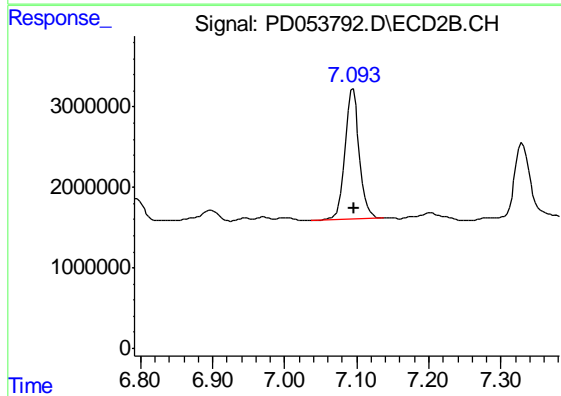
R.T.: 6.794 min
 Delta R.T.: -0.004 min
 Response: 4249349
 Conc: 4.17 ng/ml



#17 4,4'-DDT

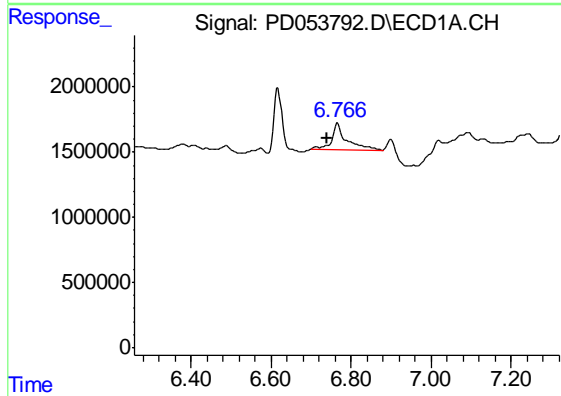
R.T.: 6.186 min
 Delta R.T.: -0.002 min
 Response: 12313948
 Conc: 20.08 ng/ml

Instrument :
 ECD_D
 ClientSampleId :
 PST-015-SW109-062519



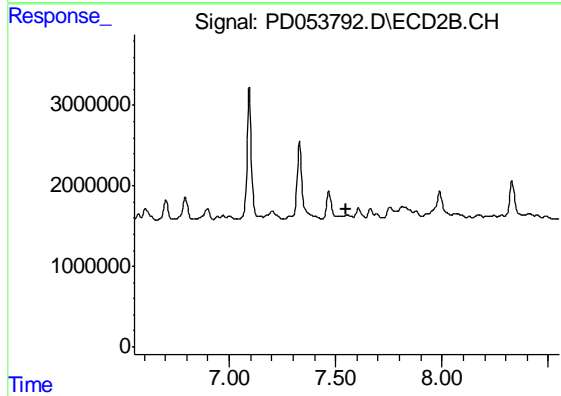
#17 4,4'-DDT

R.T.: 7.095 min
 Delta R.T.: -0.002 min
 Response: 22250201
 Conc: 20.75 ng/ml



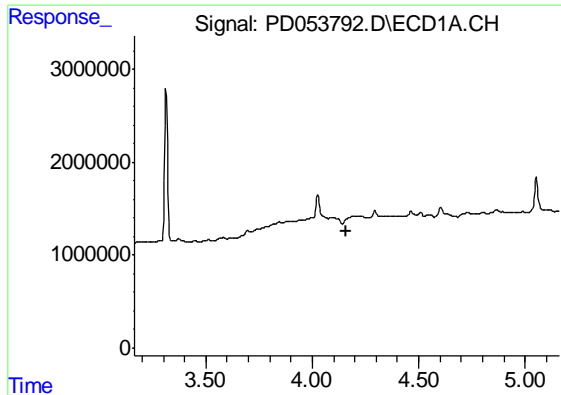
#20 Methoxychlor

R.T.: 6.767 min
 Delta R.T.: 0.028 min
 Response: 5387598
 Conc: 19.83 ng/ml



#20 Methoxychlor

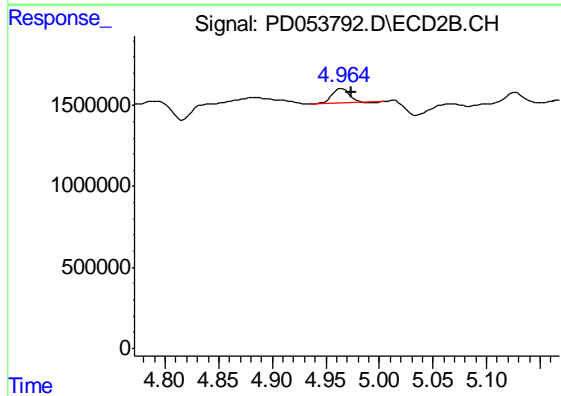
R.T.: 0.000 min
 Exp R.T. : 7.552 min
 Response: 0
 Conc: N.D.



#23 Chlordane-1

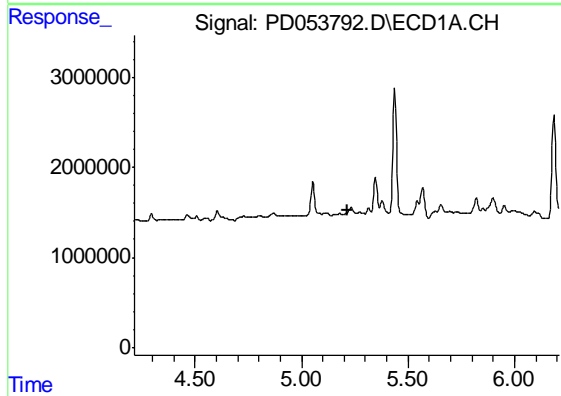
R.T.: 0.000 min
 Exp R.T. : 4.162 min
 Response: 0
 Conc: N.D.

Instrument :
 ECD_D
 ClientSampleId :
 PST-015-SW109-062519



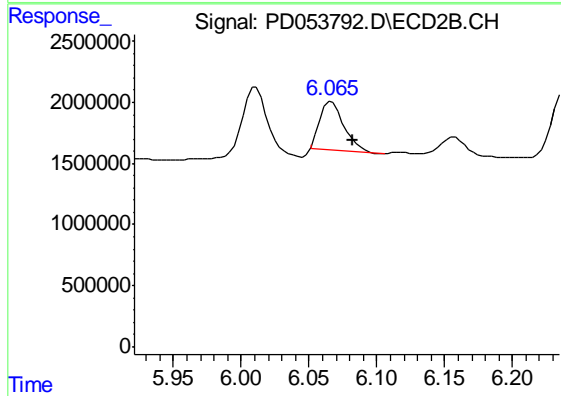
#23 Chlordane-1

R.T.: 4.965 min
 Delta R.T.: -0.008 min
 Response: 994315
 Conc: 20.08 ng/ml



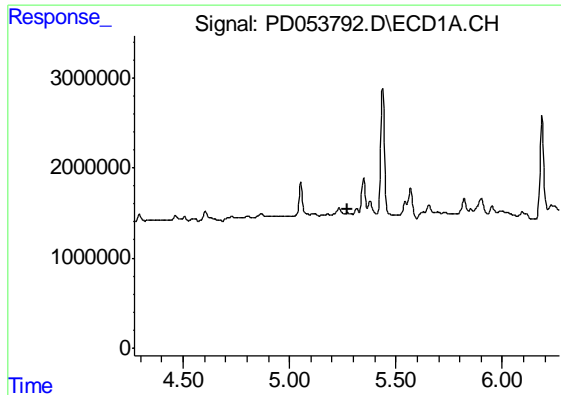
#25 Chlordane-3

R.T.: 0.000 min
 Exp R.T. : 5.213 min
 Response: 0
 Conc: N.D.



#25 Chlordane-3

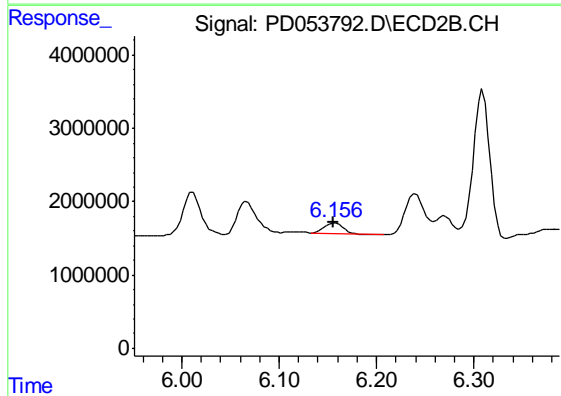
R.T.: 6.067 min
 Delta R.T.: -0.015 min
 Response: 4960621
 Conc: 24.97 ng/ml



#26 Chlordane-4

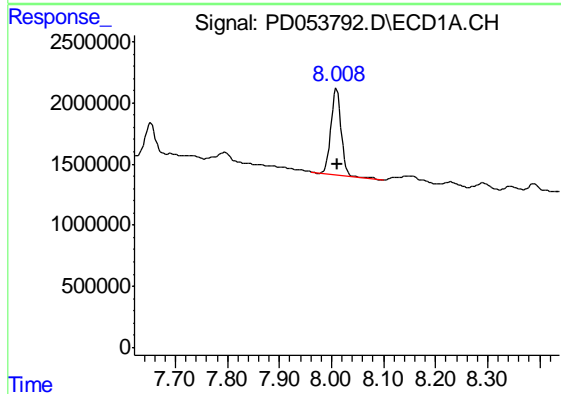
R.T.: 0.000 min
 Exp R.T. : 5.271 min
 Response: 0
 Conc: N.D.

Instrument :
 ECD_D
 ClientSampleId :
 PST-015-SW109-062519



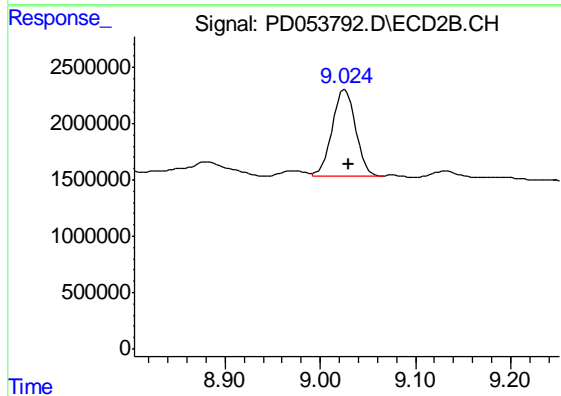
#26 Chlordane-4

R.T.: 6.157 min
 Delta R.T.: 0.000 min
 Response: 2046776
 Conc: 8.73 ng/ml



#28 Decachlorobiphenyl

R.T.: 8.009 min
 Delta R.T.: -0.003 min
 Response: 9809439
 Conc: 15.09 ng/ml



#28 Decachlorobiphenyl

R.T.: 9.026 min
 Delta R.T.: -0.004 min
 Response: 13226171
 Conc: 13.08 ng/ml