

Data Path : Z:\pestpcbsrv\HPCHEM1\ECD_D\Data\PD070224\
 Data File : PD083900.D
 Signal(s) : Signal #1: ECD1A.ch Signal #2: ECD2B.ch
 Acq On : 02 Jul 2024 11:08
 Operator : AR\AJ
 Sample : INDA323
 Misc :
 ALS Vial : 8 Sample Multiplier: 1

Instrument :
 ECD_D
 ClientSampleId :
 INDA3204

Integration File signal 1: autoint1.e
 Integration File signal 2: autoint2.e
 Quant Time: Jul 03 01:21:21 2024
 Quant Method : Z:\pestpcbsrv\HPCHEM1\ECD_D\Method\PD062624CLP.M
 Quant Title : GC Extractables
 QLast Update : Thu Jun 27 04:33:52 2024
 Response via : Initial Calibration
 Integrator: ChemStation

Volume Inj. : 1 µl
 Signal #1 Phase : ZB-MR2 Signal #2 Phase: ZB-MR2
 Signal #1 Info : 30M x 0.32mm x0.5 Signal #2 Info : 30M x 0.32mm x 0.25µm

Compound	RT#1	RT#2	Resp#1	Resp#2	ng/ml	ng/ml

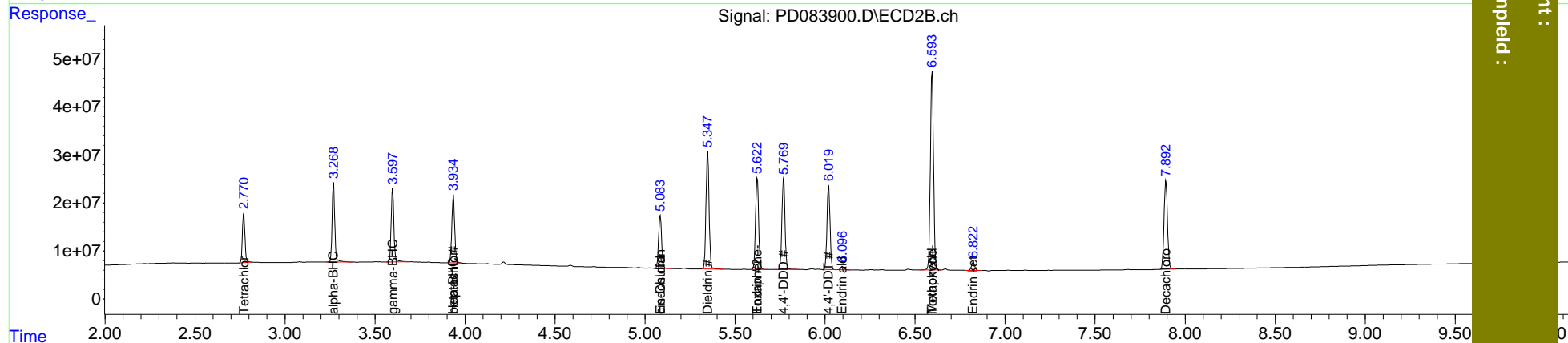
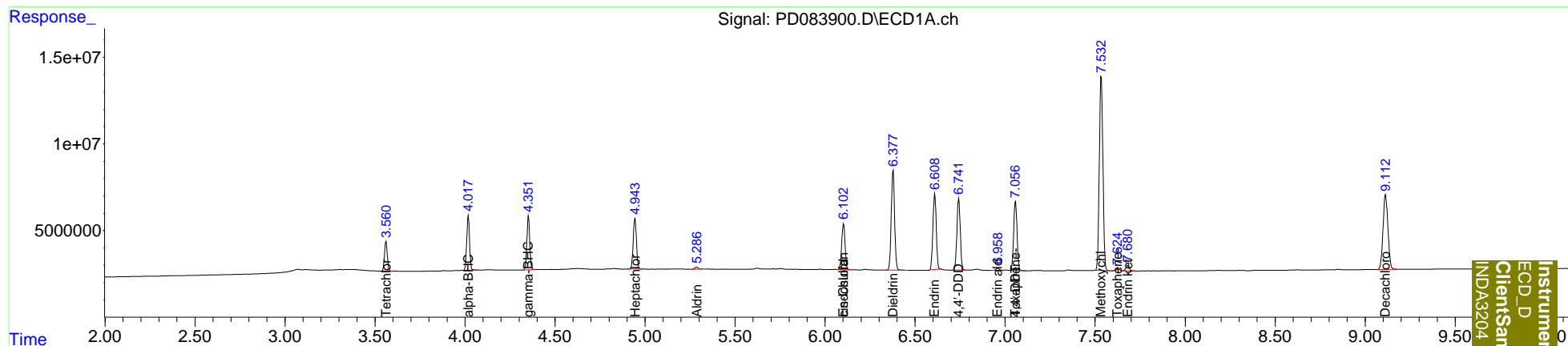
System Monitoring Compounds						
1) SA Tetrachlo...	3.561	2.771	18834885	103.9E6	18.551	19.179
2) SA Decachlor...	9.113	7.893	81107376	248.3E6	38.066	37.170
Target Compounds						
2) A alpha-BHC	4.018	3.270	34396073	173.3E6	18.181	19.220
3) MA gamma-BHC...	4.353	3.598	33802532	162.7E6	18.316	19.010
4) MA Heptachlor	4.944	3.936	36751564	157.1E6	18.334	18.652
5) MB Aldrin	5.288	0.000	1376635	0	0.678	N.D. #
6) B beta-BHC	0.000	3.936f	0	157.1E6	N.D.	41.425
9) A Endosulfan I	6.103	5.085	34392702	133.3E6	18.569	19.181
11) B cis-Chlor...	6.103f	5.085f	34392702	133.3E6	17.570	16.933
13) MA Dieldrin	6.378	5.348	74206310	292.6E6	37.059	37.797
14) MA Endrin	6.610	5.623	56662039	229.1E6	34.258	34.593
16) A 4,4'-DDD	6.743	5.770	53368501	227.0E6	36.991	38.105
17) MA 4,4'-DDT	7.058	6.020	52545952	208.5E6	34.749	35.672
18) B Endrin al...	6.960	6.097	1654957	8882352	1.210	1.771 #
20) A Methoxychlor	7.534	6.595	156.7E6	510.0E6	176.116	172.601
21) B Endrin ke...	7.681	6.823	4225638	21107399	2.164	3.005 #
23) Toxaphene-2	0.000	5.623f	0	229.1E6	N.D.	5676.932
24) Toxaphene-3	7.058f	6.595	52545952	510.0E6	1101.861	3895.476 #
26) Toxaphene-5	7.627	0.000	549130	0	20.689	N.D. #

(f)=RT Delta > 1/2 Window (#)=Amounts differ by > 25% (m)=manual int.

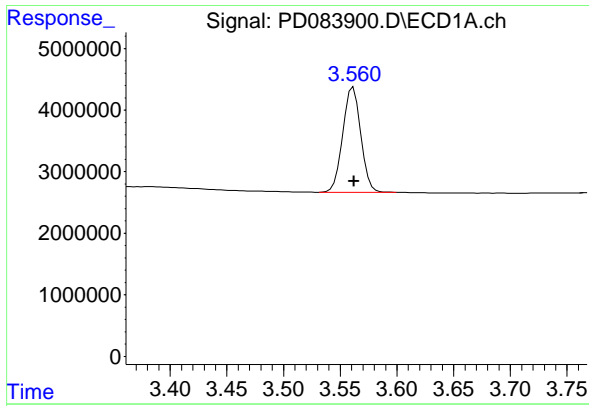
Data Path : Z:\pestpcbsrv\HPCHEM1\ECD_D\Data\PD070224\
 Data File : PD083900.D
 Signal(s) : Signal #1: ECD1A.ch Signal #2: ECD2B.ch
 Acq On : 02 Jul 2024 11:08
 Operator : AR\AJ
 Sample : INDA323
 Misc :
 ALS Vial : 8 Sample Multiplier: 1

Integration File signal 1: autoint1.e
 Integration File signal 2: autoint2.e
 Quant Time: Jul 03 01:21:21 2024
 Quant Method : Z:\pestpcbsrv\HPCHEM1\ECD_D\Method\PD062624CLP.M
 Quant Title : GC Extractables
 QLast Update : Thu Jun 27 04:33:52 2024
 Response via : Initial Calibration
 Integrator: ChemStation

Volume Inj. : 1 µl
 Signal #1 Phase : ZB-MR1 Signal #2 Phase: ZB-MR2
 Signal #1 Info : 30M x 0.32mm x 0.5 Signal #2 Info : 30M x 0.32mm x 0.25µm



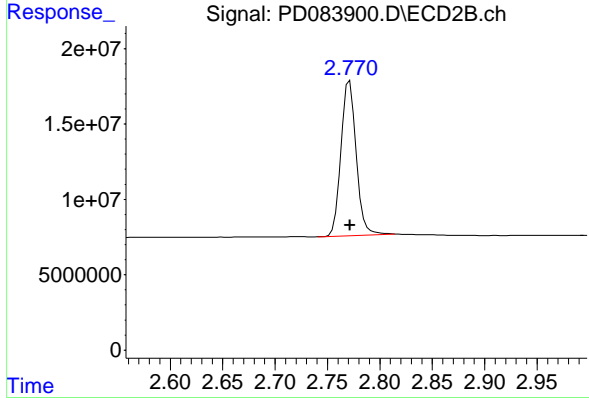
Instrument :
 ECD_D
 Client/Sample :
 INDA3204



#1 Tetrachloro-m-xylene

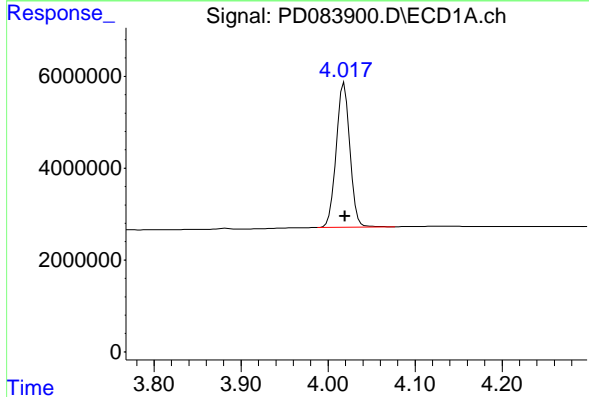
R.T.: 3.561 min
 Delta R.T.: 0.000 min
 Response: 18834885
 Conc: 18.55 ng/ml

Instrument :
 ECD_D
 ClientSampleId :
 INDA3204



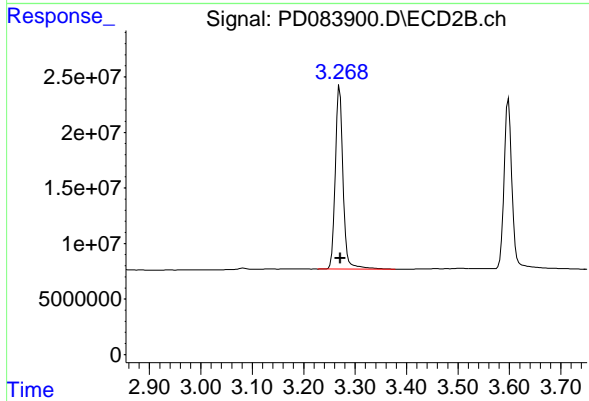
#1 Tetrachloro-m-xylene

R.T.: 2.771 min
 Delta R.T.: 0.000 min
 Response: 103943962
 Conc: 19.18 ng/ml



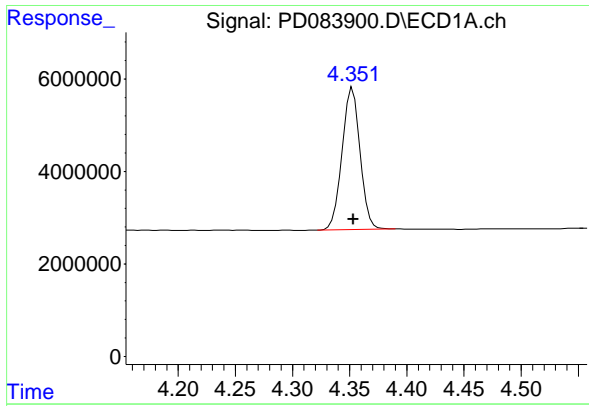
#2 alpha-BHC

R.T.: 4.018 min
 Delta R.T.: -0.001 min
 Response: 34396073
 Conc: 18.18 ng/ml



#2 alpha-BHC

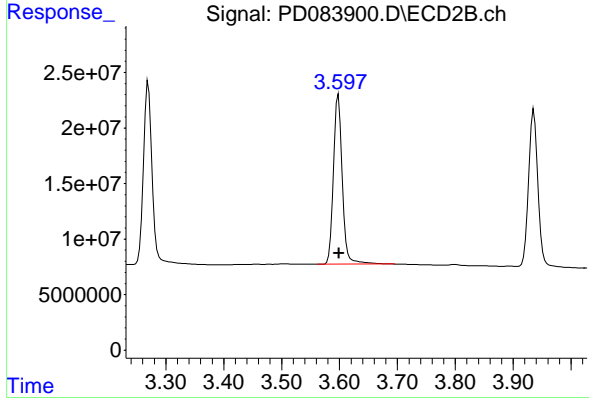
R.T.: 3.270 min
 Delta R.T.: -0.001 min
 Response: 173264840
 Conc: 19.22 ng/ml



#3 gamma-BHC (Lindane)

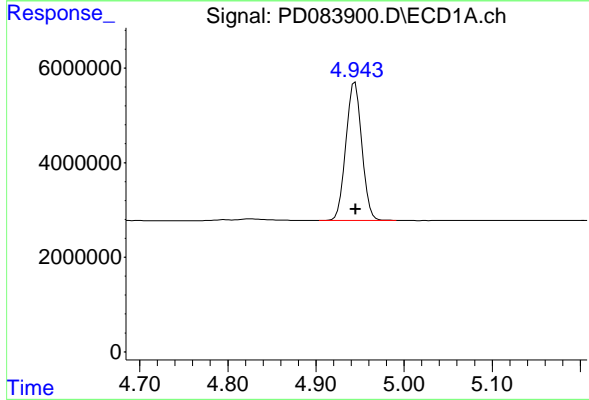
R.T.: 4.353 min
 Delta R.T.: 0.000 min
 Response: 33802532
 Conc: 18.32 ng/ml

Instrument :
 ECD_D
 ClientSampleId :
 INDA3204



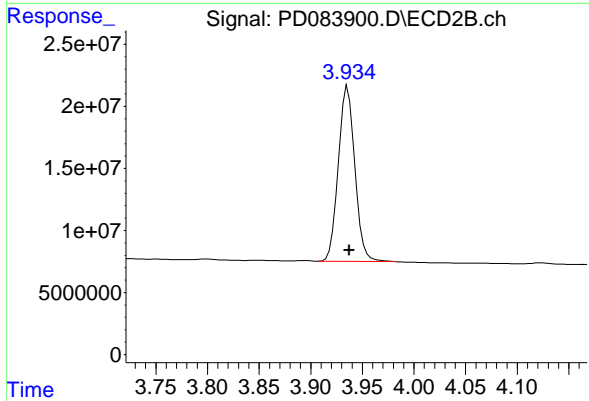
#3 gamma-BHC (Lindane)

R.T.: 3.598 min
 Delta R.T.: 0.000 min
 Response: 162741453
 Conc: 19.01 ng/ml



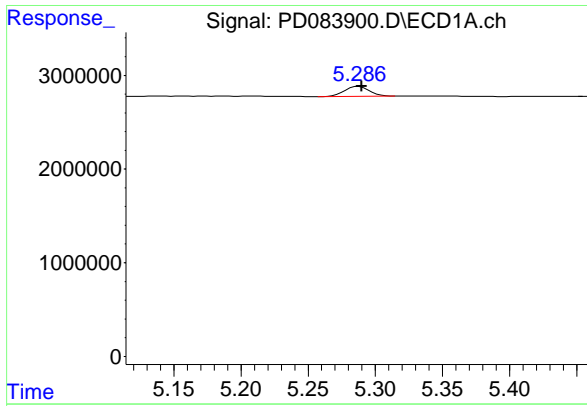
#4 Heptachlor

R.T.: 4.944 min
 Delta R.T.: 0.000 min
 Response: 36751564
 Conc: 18.33 ng/ml



#4 Heptachlor

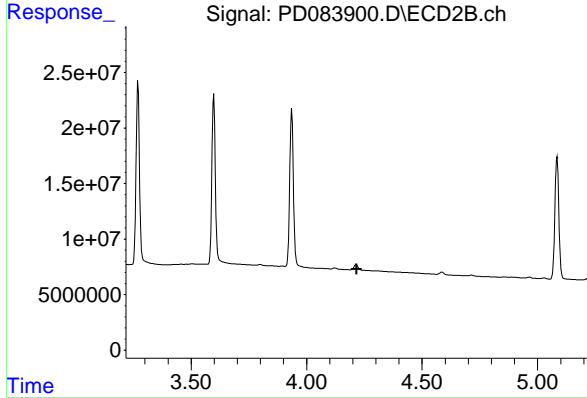
R.T.: 3.936 min
 Delta R.T.: -0.002 min
 Response: 157057927
 Conc: 18.65 ng/ml



#5 Aldrin

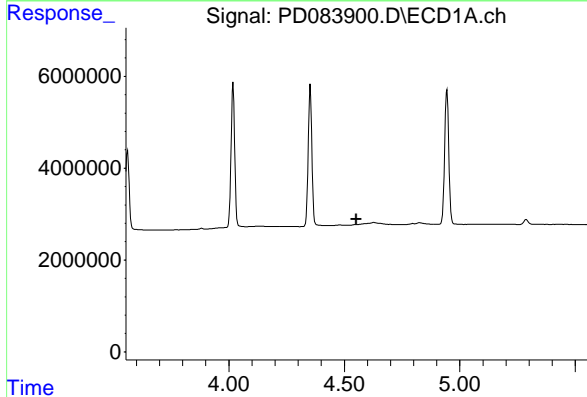
R.T.: 5.288 min
 Delta R.T.: -0.002 min
 Response: 1376635
 Conc: 0.68 ng/ml

Instrument :
 ECD_D
 ClientSampleId :
 INDA3204



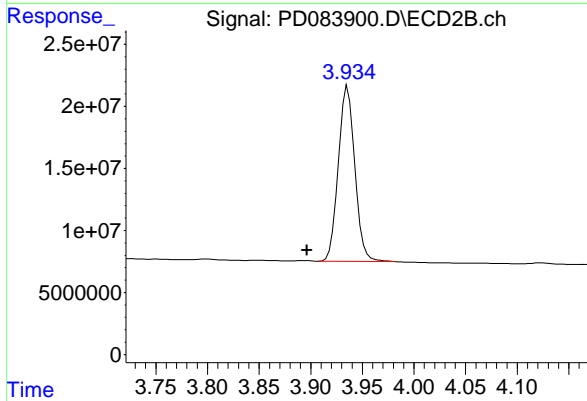
#5 Aldrin

R.T.: 0.000 min
 Exp R.T. : 4.216 min
 Response: 0
 Conc: N.D.



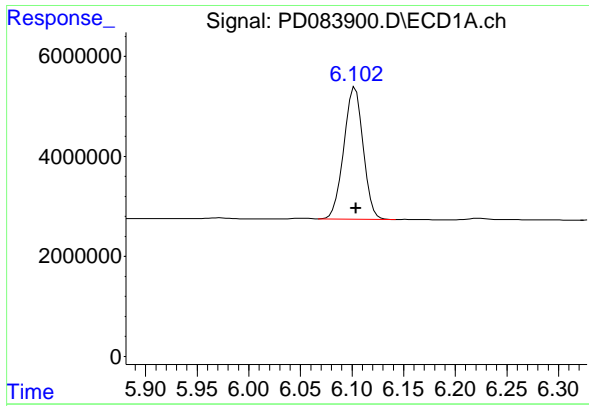
#6 beta-BHC

R.T.: 0.000 min
 Exp R.T. : 4.551 min
 Response: 0
 Conc: N.D.



#6 beta-BHC

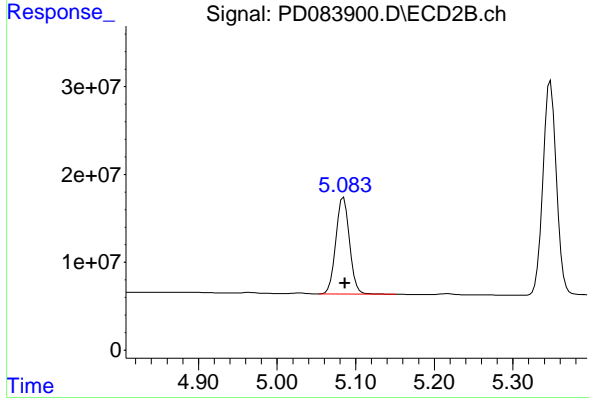
R.T.: 3.936 min
 Delta R.T.: 0.039 min
 Response: 157057927
 Conc: 41.43 ng/ml



#9 Endosulfan I

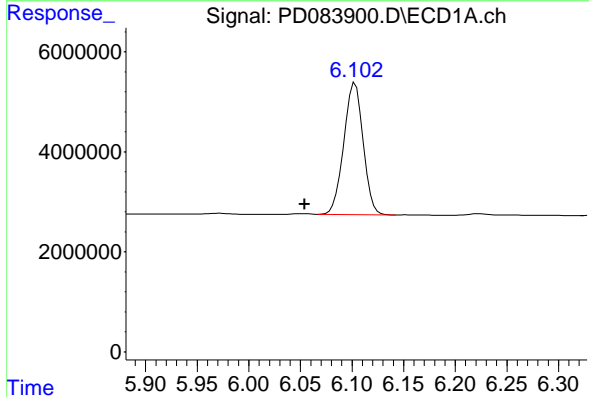
R.T.: 6.103 min
 Delta R.T.: 0.000 min
 Response: 34392702
 Conc: 18.57 ng/ml

Instrument :
 ECD_D
 ClientSampleId :
 INDA3204



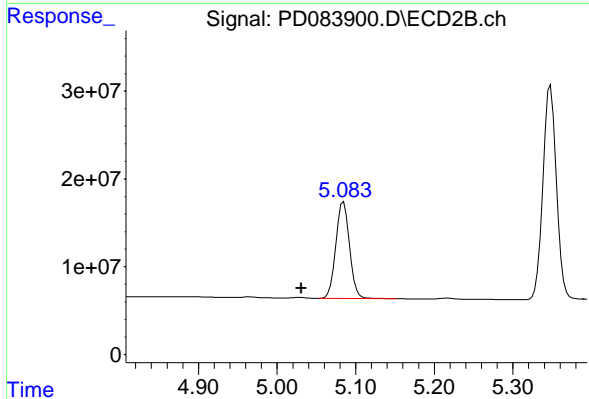
#9 Endosulfan I

R.T.: 5.085 min
 Delta R.T.: -0.002 min
 Response: 133281231
 Conc: 19.18 ng/ml



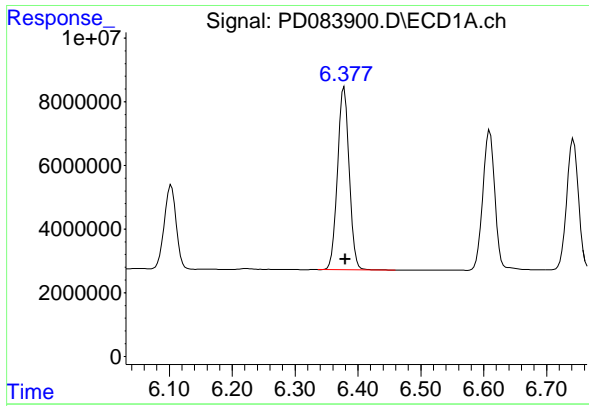
#11 cis-Chlordane

R.T.: 6.103 min
 Delta R.T.: 0.049 min
 Response: 34392702
 Conc: 17.57 ng/ml



#11 cis-Chlordane

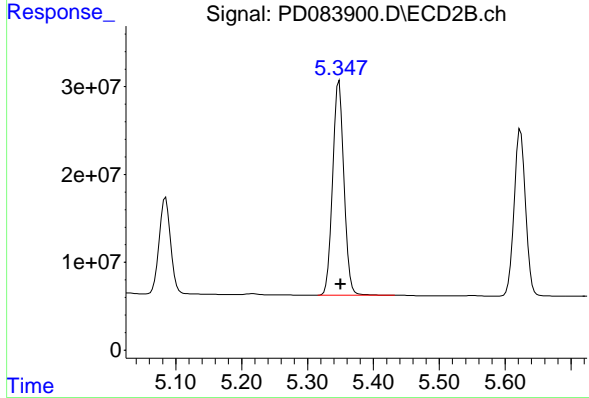
R.T.: 5.085 min
 Delta R.T.: 0.053 min
 Response: 133281231
 Conc: 16.93 ng/ml



#13 Dieldrin

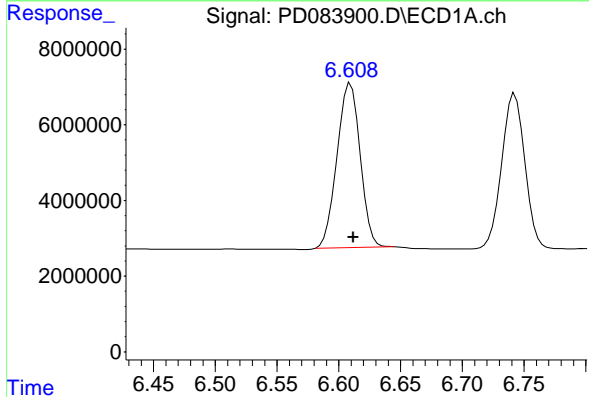
R.T.: 6.378 min
 Delta R.T.: -0.002 min
 Response: 74206310
 Conc: 37.06 ng/ml

Instrument :
 ECD_D
 ClientSampleId :
 INDA3204



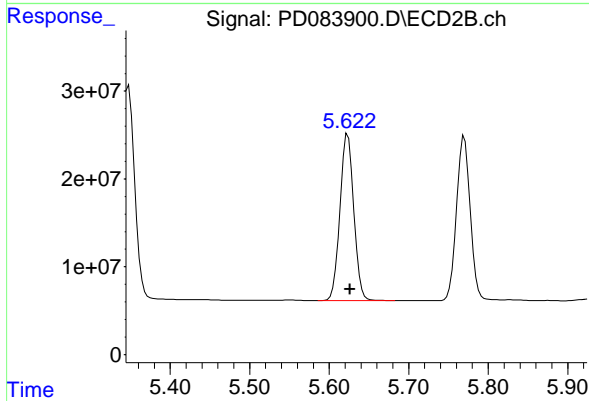
#13 Dieldrin

R.T.: 5.348 min
 Delta R.T.: -0.003 min
 Response: 292625583
 Conc: 37.80 ng/ml



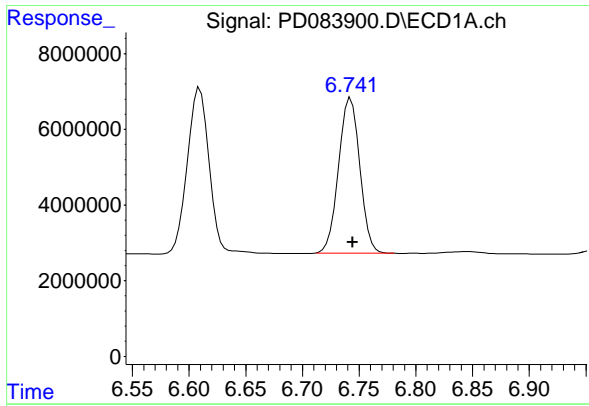
#14 Endrin

R.T.: 6.610 min
 Delta R.T.: -0.002 min
 Response: 56662039
 Conc: 34.26 ng/ml



#14 Endrin

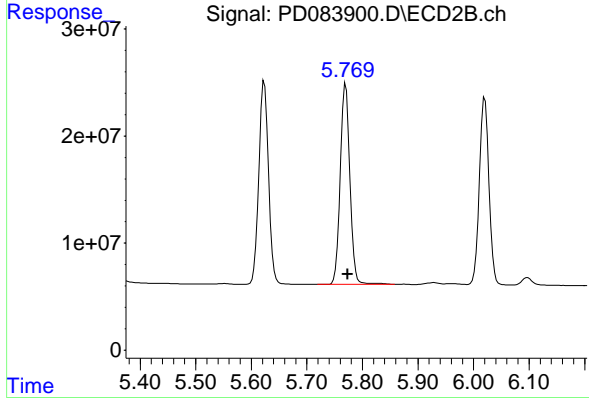
R.T.: 5.623 min
 Delta R.T.: -0.003 min
 Response: 229098302
 Conc: 34.59 ng/ml



#16 4,4'-DDD

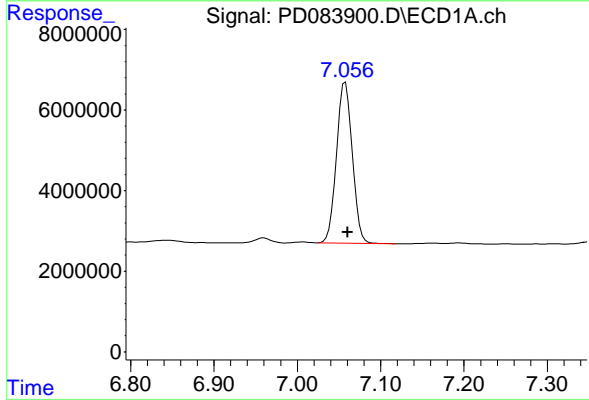
R.T.: 6.743 min
 Delta R.T.: -0.002 min
 Response: 53368501
 Conc: 36.99 ng/ml

Instrument :
 ECD_D
 ClientSampleId :
 INDA3204



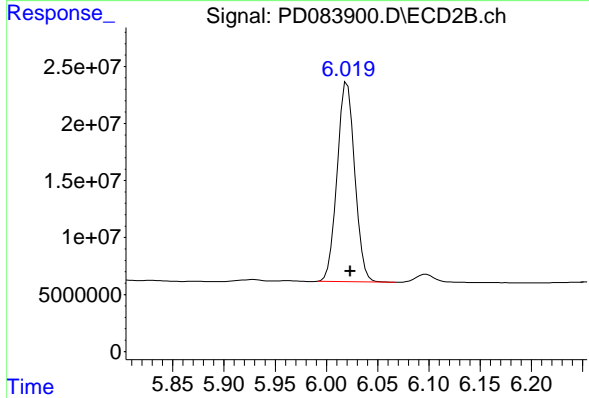
#16 4,4'-DDD

R.T.: 5.770 min
 Delta R.T.: -0.003 min
 Response: 227005390
 Conc: 38.10 ng/ml



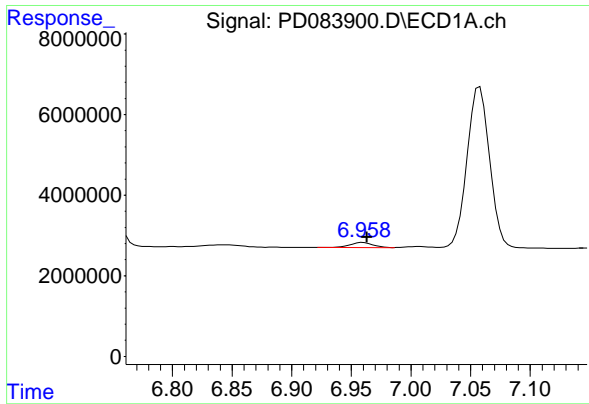
#17 4,4'-DDT

R.T.: 7.058 min
 Delta R.T.: -0.002 min
 Response: 52545952
 Conc: 34.75 ng/ml



#17 4,4'-DDT

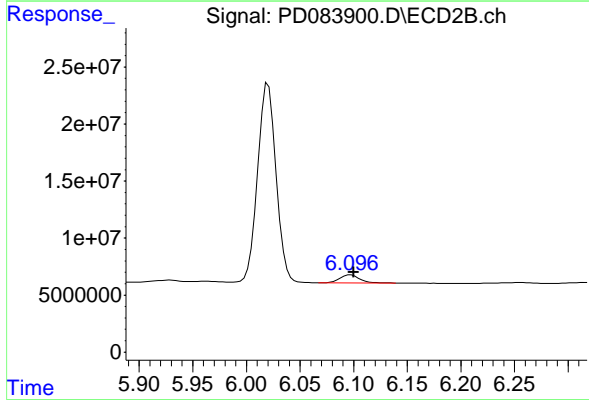
R.T.: 6.020 min
 Delta R.T.: -0.003 min
 Response: 208547221
 Conc: 35.67 ng/ml



#18 Endrin aldehyde

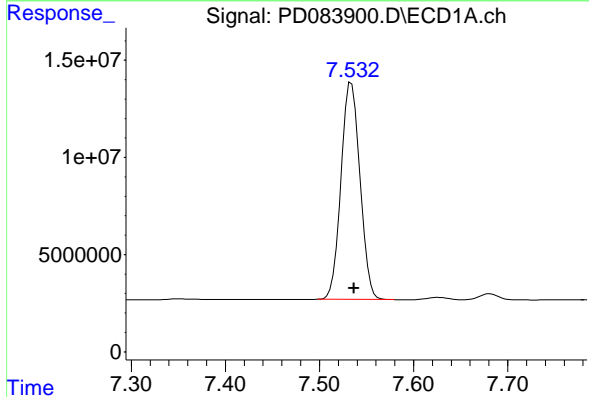
R.T.: 6.960 min
 Delta R.T.: -0.003 min
 Response: 1654957
 Conc: 1.21 ng/ml

Instrument :
 ECD_D
 ClientSampleId :
 INDA3204



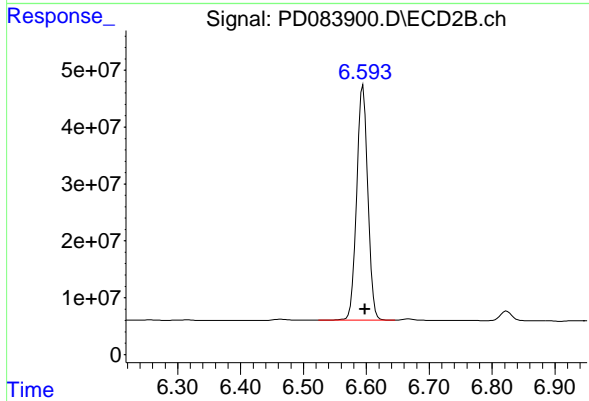
#18 Endrin aldehyde

R.T.: 6.097 min
 Delta R.T.: -0.003 min
 Response: 8882352
 Conc: 1.77 ng/ml



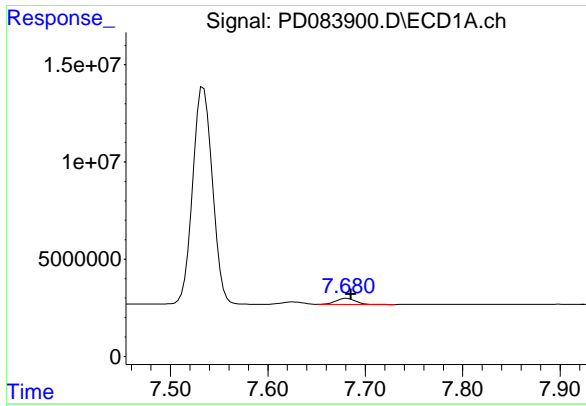
#20 Methoxychlor

R.T.: 7.534 min
 Delta R.T.: -0.003 min
 Response: 156690753
 Conc: 176.12 ng/ml



#20 Methoxychlor

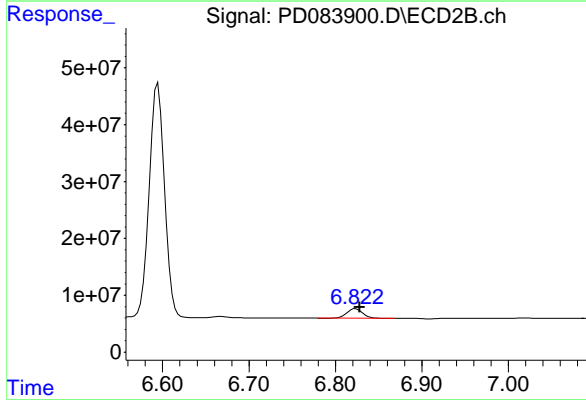
R.T.: 6.595 min
 Delta R.T.: -0.003 min
 Response: 510002487
 Conc: 172.60 ng/ml



#21 Endrin ketone

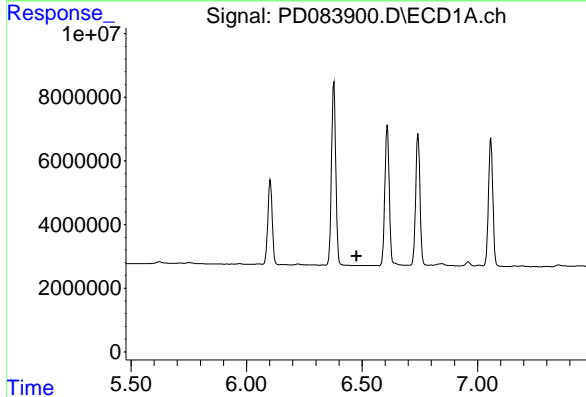
R.T.: 7.681 min
 Delta R.T.: -0.004 min
 Response: 4225638
 Conc: 2.16 ng/ml

Instrument :
 ECD_D
 ClientSampleId :
 INDA3204



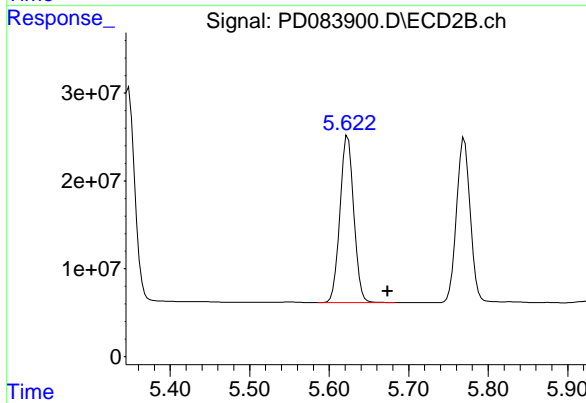
#21 Endrin ketone

R.T.: 6.823 min
 Delta R.T.: -0.005 min
 Response: 21107399
 Conc: 3.00 ng/ml



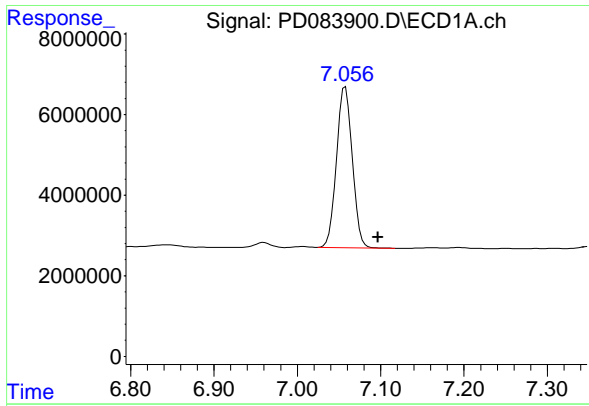
#23 Toxaphene-2

R.T.: 0.000 min
 Exp R.T. : 6.476 min
 Response: 0
 Conc: N.D.



#23 Toxaphene-2

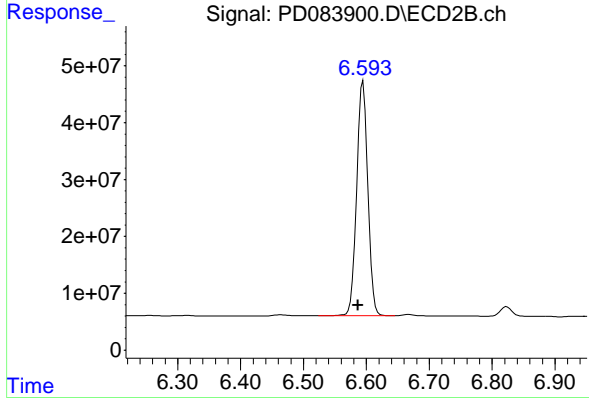
R.T.: 5.623 min
 Delta R.T.: -0.050 min
 Response: 229098302
 Conc: 5676.93 ng/ml



#24 Toxaphene-3

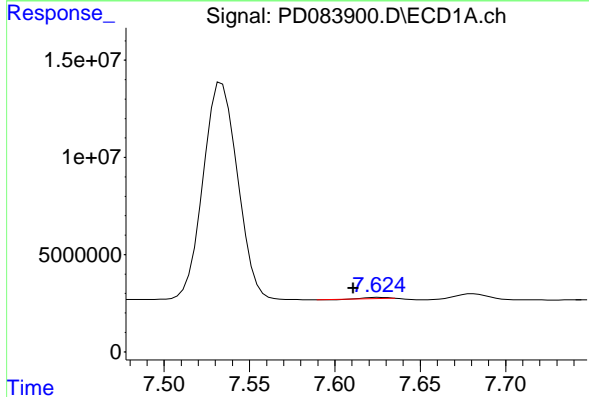
R.T.: 7.058 min
 Delta R.T.: -0.039 min
 Response: 52545952
 Conc: 1101.86 ng/ml

Instrument :
 ECD_D
 ClientSampleId :
 INDA3204



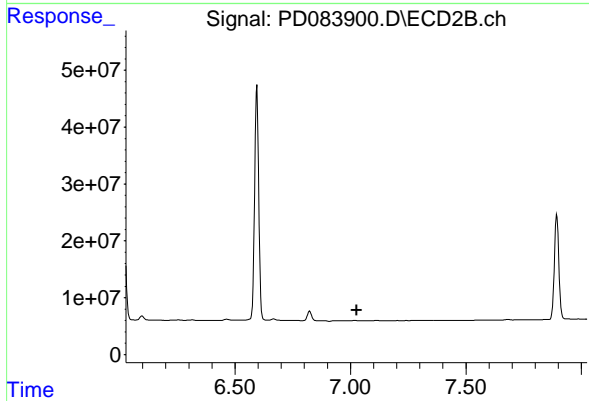
#24 Toxaphene-3

R.T.: 6.595 min
 Delta R.T.: 0.008 min
 Response: 510002487
 Conc: 3895.48 ng/ml



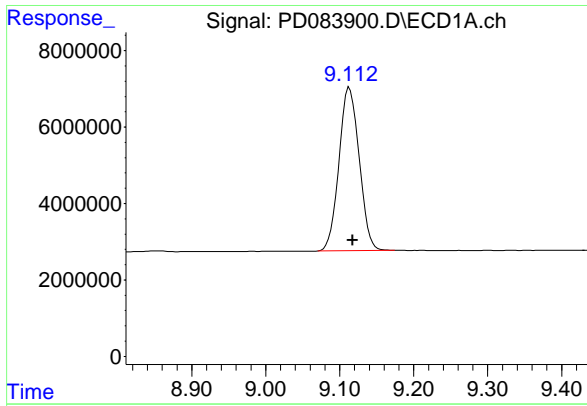
#26 Toxaphene-5

R.T.: 7.627 min
 Delta R.T.: 0.016 min
 Response: 549130
 Conc: 20.69 ng/ml



#26 Toxaphene-5

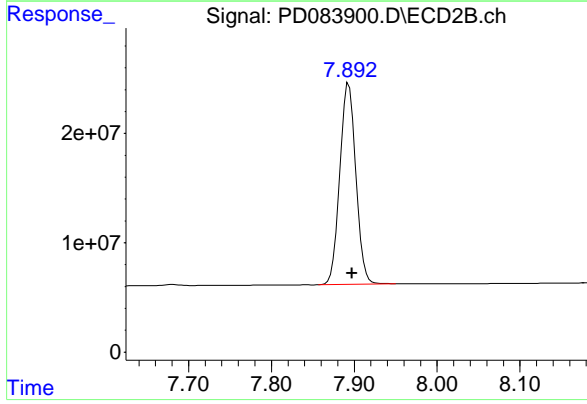
R.T.: 0.000 min
 Exp R.T.: 7.027 min
 Response: 0
 Conc: N.D.



#27 Decachlorobiphenyl

R.T.: 9.113 min
 Delta R.T.: -0.005 min
 Response: 81107376
 Conc: 38.07 ng/ml

Instrument :
 ECD_D
 ClientSampleId :
 INDA3204



#27 Decachlorobiphenyl

R.T.: 7.893 min
 Delta R.T.: -0.004 min
 Response: 248334834
 Conc: 37.17 ng/ml