

Data Path : Z:\pestpcbsrv\HPCHEM1\ECD_D\Data\PD070519\
 Data File : PD053854.D
 Signal(s) : Signal #1: ECD1A.CH Signal #2: ECD2B.CH
 Acq On : 05 Jul 2019 9:11
 Operator : SM\AJ
 Sample : PIBLK08
 Misc :
 ALS Vial : 2 Sample Multiplier: 1

Instrument :
 ECD_D
 ClientSampleId :
 PIBLK08

Integration File signal 1: autoint1.e
 Integration File signal 2: autoint2.e
 Quant Time: Jul 05 22:59:41 2019
 Quant Method : Z:\pestpcbsrv\HPCHEM1\ECD_D\Method\PD070319CLP.M
 Quant Title : GC Extractables
 QLast Update : Fri Jul 05 03:58:18 2019
 Response via : Initial Calibration
 Integrator: ChemStation 6890 Scale Mode: Large solvent peaks clipped

Volume Inj. : 1 µl
 Signal #1 Phase : ZB-MR2 Signal #2 Phase: ZB-MR1
 Signal #1 Info : 30M x 0.32mm x0.2 Signal #2 Info : 30M x 0.32mm x 0.50µm

Compound	RT#1	RT#2	Resp#1	Resp#2	ng/ml	ng/ml

System Monitoring Compounds						
1) SA Tetrachlo...	3.313	3.983	15021369	22427938	19.687	19.886
2) SA Decachlor...	8.008	9.023	28124052	39506406	37.868	37.811

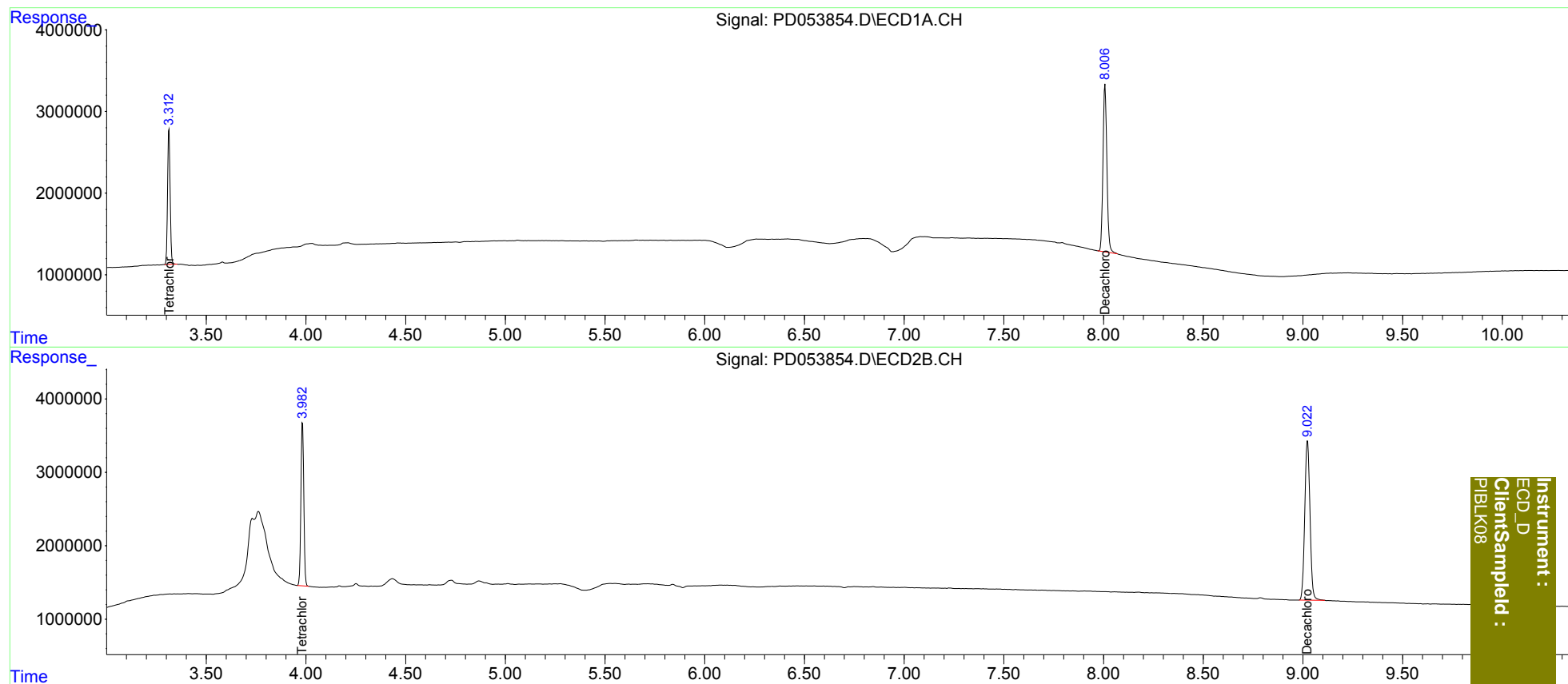
Target Compounds

(f)=RT Delta > 1/2 Window (#)=Amounts differ by > 25% (m)=manual int.

Data Path : Z:\pestpcbsrv\HPCHEM1\ECD_D\Data\PD070519\
Data File : PD053854.D
Signal(s) : Signal #1: ECD1A.CH Signal #2: ECD2B.CH
Acq On : 05 Jul 2019 9:11
Operator : SM\AJ
Sample : PIBLK08
Misc :
ALS Vial : 2 Sample Multiplier: 1

Integration File signal 1: autoint1.e
Integration File signal 2: autoint2.e
Quant Time: Jul 05 22:59:41 2019
Quant Method : Z:\pestpcbsrv\HPCHEM1\ECD_D\Method\PD070319CLP.M
Quant Title : GC Extractables
QLast Update : Fri Jul 05 03:58:18 2019
Response via : Initial Calibration
Integrator: ChemStation 6890 Scale Mode: Large solvent peaks clipped

Volume Inj. : 1 µl
Signal #1 Phase : ZB-MR2 Signal #2 Phase: ZB-MR1
Signal #1 Info : 30M x 0.32mm x 0.2 Signal #2 Info : 30M x 0.32mm x 0.50µm



Instrument :
ECD_D
ClientSampleId :
PIBLK08