

Data Path : Z:\pestpcbsrv\HPCHEM1\ECD_D\Data\PD070519\
 Data File : PD053889.D
 Signal(s) : Signal #1: ECD1A.CH Signal #2: ECD2B.CH
 Acq On : 05 Jul 2019 18:12
 Operator : SM\AJ
 Sample : K3671-14
 Misc :
 ALS Vial : 38 Sample Multiplier: 1

Instrument :
 ECD_D
ClientSampled :
 C5BD8

Manual Integrations
APPROVED
 Ankita
 7/8/2019 3:14:56 PM

Integration File signal 1: autoint1.e
 Integration File signal 2: autoint2.e
 Quant Time: Jul 05 23:10:38 2019
 Quant Method : Z:\pestpcbsrv\HPCHEM1\ECD_D\Method\PD070319CLP.M
 Quant Title : GC Extractables
 QLast Update : Fri Jul 05 03:58:18 2019
 Response via : Initial Calibration
 Integrator: ChemStation 6890 Scale Mode: Large solvent peaks clipped

Volume Inj. : 1 µl
 Signal #1 Phase : ZB-MR2 Signal #2 Phase: ZB-MR1
 Signal #1 Info : 30M x 0.32mm x0.2 Signal #2 Info : 30M x 0.32mm x 0.50µm

Compound	RT#1	RT#2	Resp#1	Resp#2	ng/ml	ng/ml

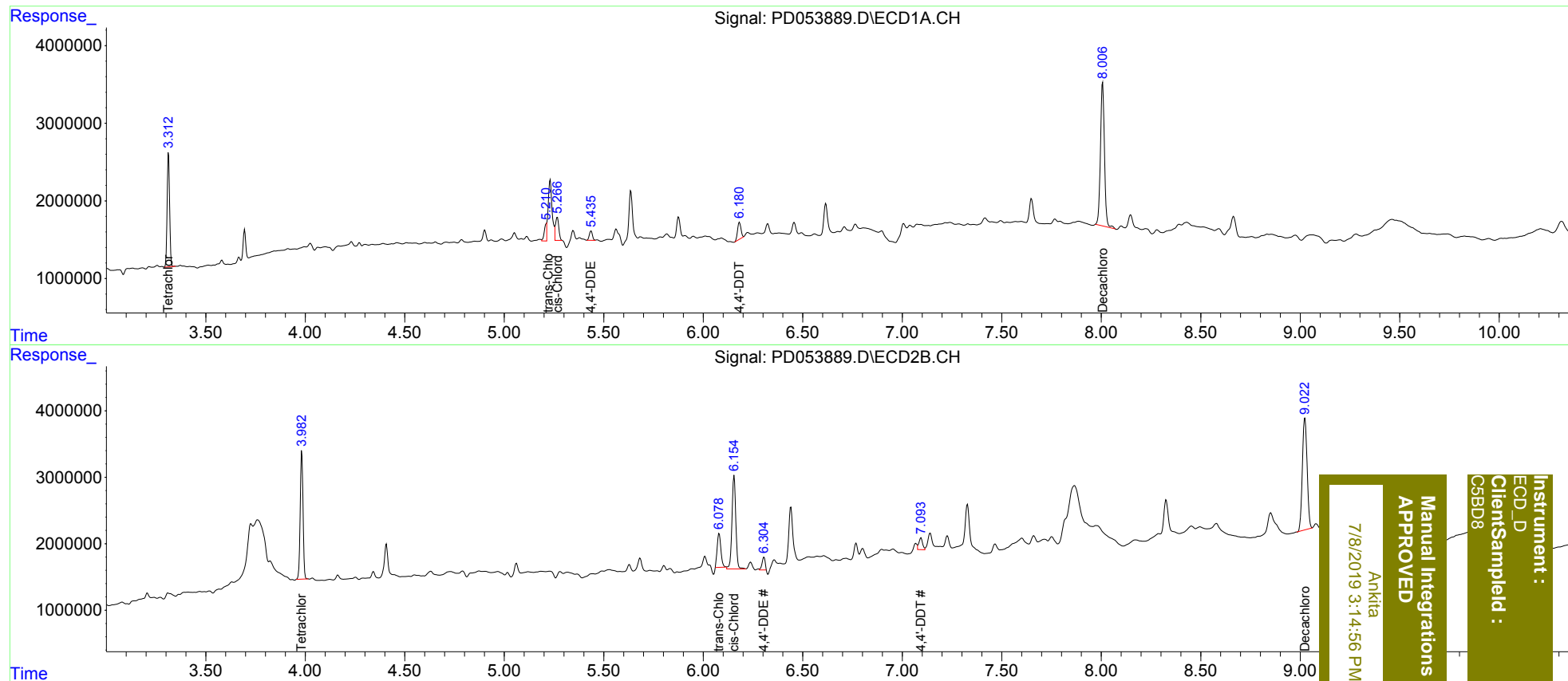
System Monitoring Compounds						
1) SA Tetrachlo...	3.313	3.983	12868697	18992933	16.866	16.840
27) SA Decachlor...	8.007	9.024	25902007	27810520	34.876	26.617
Target Compounds						
10) B trans-Chl...	5.210	6.078	1521427	6626151	1.590m	4.390m#
11) B cis-Chlor...	5.266	6.155	3391651	18749890	3.632m	12.733 #
12) B 4,4'-DDE	5.435	6.304	1322456	2043383	1.459m	1.452m
17) MA 4,4'-DDT	6.180	7.093	2638955	2361959	3.682m	2.002m#

(f)=RT Delta > 1/2 Window (#)=Amounts differ by > 25% (m)=manual int.

Data Path : Z:\pestpcbsrv\HPCHEM1\ECD_D\Data\PD070519\
 Data File : PD053889.D
 Signal(s) : Signal #1: ECD1A.CH Signal #2: ECD2B.CH
 Acq On : 05 Jul 2019 18:12
 Operator : SM\AJ
 Sample : K3671-14
 Misc :
 ALS Vial : 38 Sample Multiplier: 1

Integration File signal 1: autoint1.e
 Integration File signal 2: autoint2.e
 Quant Time: Jul 05 23:10:38 2019
 Quant Method : Z:\pestpcbsrv\HPCHEM1\ECD_D\Method\PD070319CLP.M
 Quant Title : GC Extractables
 QLast Update : Fri Jul 05 03:58:18 2019
 Response via : Initial Calibration
 Integrator: ChemStation 6890 Scale Mode: Large solvent peaks clipped

Volume Inj. : 1 µl
 Signal #1 Phase : ZB-MR2 Signal #2 Phase: ZB-MR1
 Signal #1 Info : 30M x 0.32mm x0.2 Signal #2 Info : 30M x 0.32mm x 0.50µm



Instrument :
 ECD_D
 ClientSampleId :
 CSBD8

Manual Integrations
 APPROVED
 Ankitia
 7/8/2019 3:14:56 PM