

Data Path : Z:\pestpcbsrv\HPCHEM1\ECD\_D\Data\PD070519\  
 Data File : PD053896.D  
 Signal(s) : Signal #1: ECD1A.CH Signal #2: ECD2B.CH  
 Acq On : 05 Jul 2019 19:50  
 Operator : SM\AJ  
 Sample : K3671-16  
 Misc :  
 ALS Vial : 45 Sample Multiplier: 1

**Instrument :**  
 ECD\_D  
**ClientSampled :**  
 C6BC6

**Manual Integrations**  
**APPROVED**  
 Ankita  
 7/8/2019 3:15:09 PM

Integration File signal 1: autoint1.e  
 Integration File signal 2: autoint2.e  
 Quant Time: Jul 08 13:01:33 2019  
 Quant Method : Z:\pestpcbsrv\HPCHEM1\ECD\_D\Method\PD070319CLP.M  
 Quant Title : GC Extractables  
 QLast Update : Fri Jul 05 03:58:18 2019  
 Response via : Initial Calibration  
 Integrator: ChemStation 6890 Scale Mode: Large solvent peaks clipped

Volume Inj. : 1 µl  
 Signal #1 Phase : ZB-MR2 Signal #2 Phase: ZB-MR1  
 Signal #1 Info : 30M x 0.32mm x0.2 Signal #2 Info : 30M x 0.32mm x 0.50µm

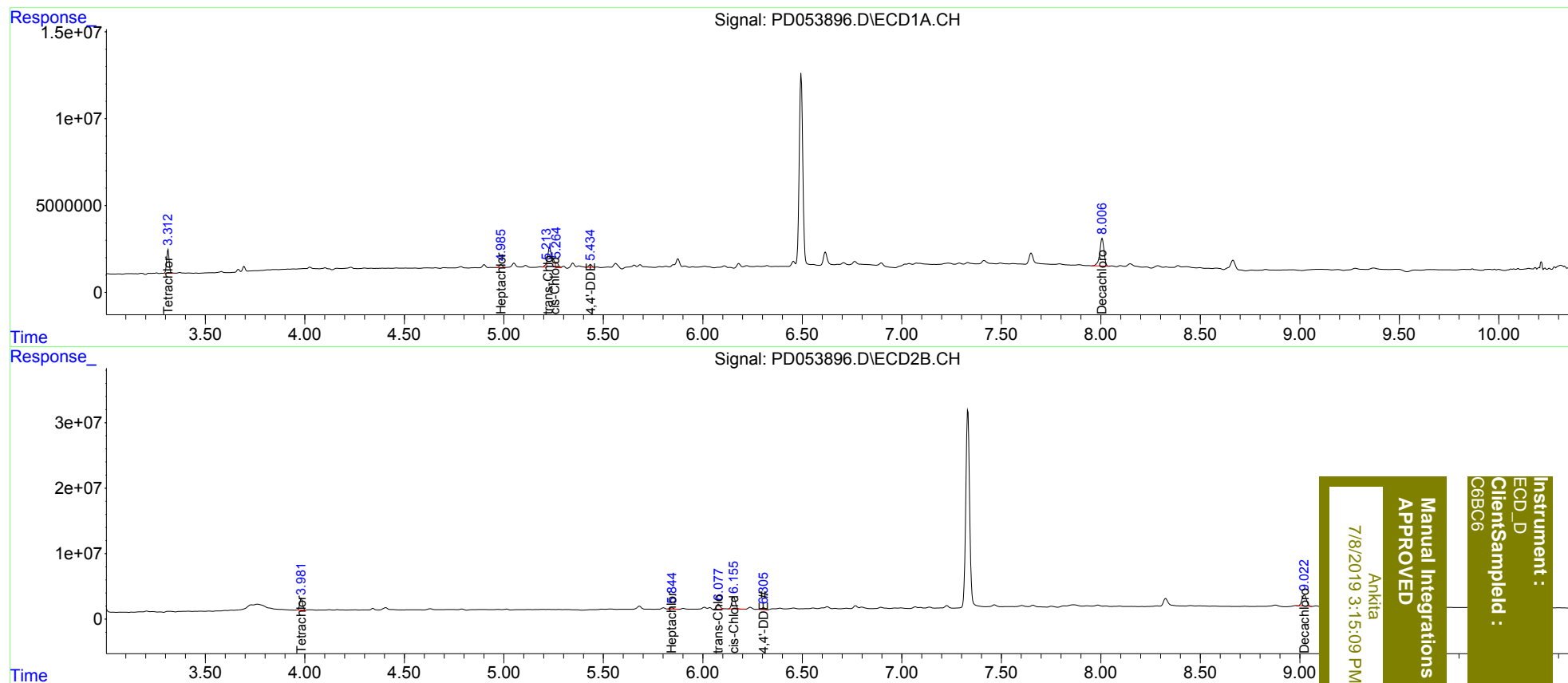
Compound	RT#1	RT#2	Resp#1	Resp#2	ng/ml	ng/ml
-----						
System Monitoring Compounds						
1) SA Tetrachlo...	3.313	3.983	11950946	17434193	15.663	15.458
27) SA Decachlor...	8.006	9.023	23940110	26478198	32.234m	25.342
Target Compounds						
8) B Heptachlo...	4.985	5.845	1876615	3208267	2.032m	2.235
10) B trans-Chl...	5.213	6.077	840940	9893940	0.879m	6.555m#
11) B cis-Chlor...	5.264	6.156	3017639	23355615	3.231m	15.860 #
12) B 4,4'-DDE	5.434	6.306	1731389	3542484	1.911m	2.517 #
-----						

(f)=RT Delta > 1/2 Window (#)=Amounts differ by > 25% (m)=manual int.

Data Path : Z:\pestpcbsrv\HPCHEM1\ECD\_D\Data\PD070519\  
 Data File : PD053896.D  
 Signal(s) : Signal #1: ECD1A.CH Signal #2: ECD2B.CH  
 Acq On : 05 Jul 2019 19:50  
 Operator : SM\AJ  
 Sample : K3671-16  
 Misc :  
 ALS Vial : 45 Sample Multiplier: 1

Integration File signal 1: autoint1.e  
 Integration File signal 2: autoint2.e  
 Quant Time: Jul 08 13:01:33 2019  
 Quant Method : Z:\pestpcbsrv\HPCHEM1\ECD\_D\Method\PD070319CLP.M  
 Quant Title : GC Extractables  
 QLast Update : Fri Jul 05 03:58:18 2019  
 Response via : Initial Calibration  
 Integrator: ChemStation 6890 Scale Mode: Large solvent peaks clipped

Volume Inj. : 1 µl  
 Signal #1 Phase : ZB-MR2 Signal #2 Phase: ZB-MR1  
 Signal #1 Info : 30M x 0.32mm x0.2 Signal #2 Info : 30M x 0.32mm x 0.50µm



Instrument : ECD\_D  
 Client Sampled : C6BC6  
 Manual Integrations APPROVED  
 Ankitia  
 7/8/2019 3:15:09 PM