

Data Path : Z:\pestpcbsrv\HPCHEM1\ECD_D\Data\PD070519\
 Data File : PD053904.D
 Signal(s) : Signal #1: ECD1A.CH Signal #2: ECD2B.CH
 Acq On : 05 Jul 2019 21:55
 Operator : SM\AJ
 Sample : INDA326
 Misc :
 ALS Vial : 54 Sample Multiplier: 1

Instrument :
 ECD_D
 ClientSampleId :
 INDA326

Integration File signal 1: autoint1.e
 Integration File signal 2: autoint2.e
 Quant Time: Jul 05 23:15:08 2019
 Quant Method : Z:\pestpcbsrv\HPCHEM1\ECD_D\Method\PD070319CLP.M
 Quant Title : GC Extractables
 QLast Update : Fri Jul 05 03:58:18 2019
 Response via : Initial Calibration
 Integrator: ChemStation 6890 Scale Mode: Large solvent peaks clipped

Volume Inj. : 1 µl
 Signal #1 Phase : ZB-MR2 Signal #2 Phase: ZB-MR1
 Signal #1 Info : 30M x 0.32mm x0.2 Signal #2 Info : 30M x 0.32mm x 0.50µm

Compound	RT#1	RT#2	Resp#1	Resp#2	ng/ml	ng/ml

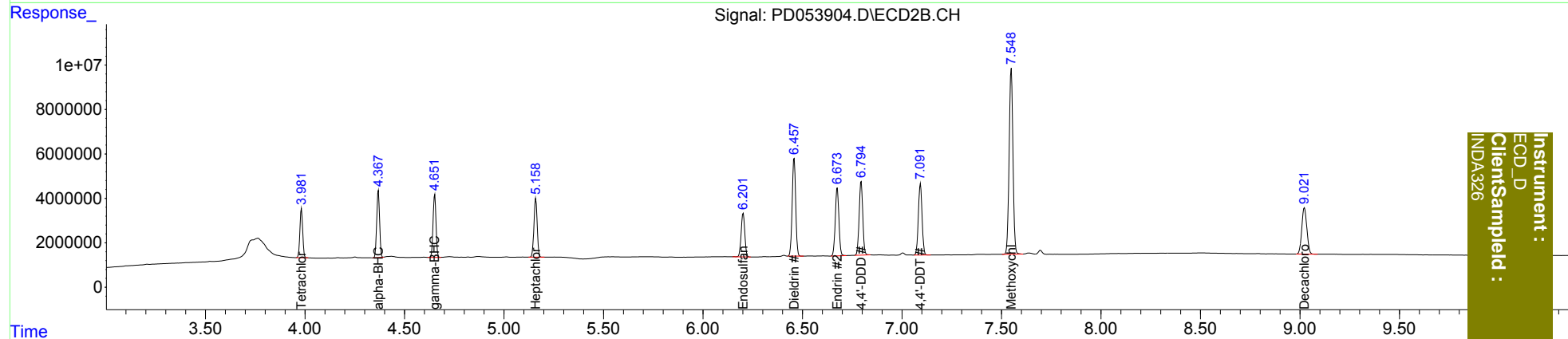
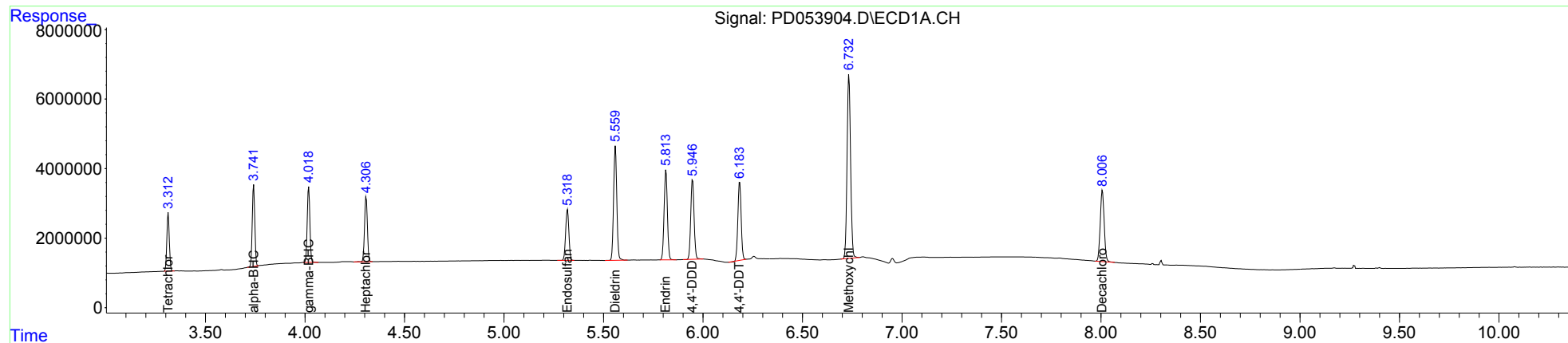
System Monitoring Compounds						
1) SA Tetrachlo...	3.313	3.983	14776730	21720408	19.367	19.259
27) SA Decachlor...	8.007	9.022	28331455	36987255	38.147	35.400
Target Compounds						
2) A alpha-BHC	3.742	4.369	21010318	30003258	19.078	19.068
3) MA gamma-BHC...	4.019	4.652	20018450	29138914	18.764	18.895
4) MA Heptachlor	4.307	5.160	18503869	29762482	19.043	18.795
9) A Endosulfan I	5.319	6.202	16510178	24853319	18.672	18.396
13) MA Dieldrin	5.560	6.458	36858190	53863959	37.617	36.344
14) MA Endrin	5.814	6.675	29594743	38998166	35.575	33.982
16) A 4,4'-DDD	5.948	6.795	26701429	42045481	39.082	37.810
17) MA 4,4'-DDT	6.185	7.093	25823493	41708210	36.033	35.358
20) A Methoxychlor	6.734	7.549	64885084	111.4E6	196.938	186.941

(f)=RT Delta > 1/2 Window (#)=Amounts differ by > 25% (m)=manual int.

Data Path : Z:\pestpcbsrv\HPCHEM1\ECD_D\Data\PD070519\
 Data File : PD053904.D
 Signal(s) : Signal #1: ECD1A.CH Signal #2: ECD2B.CH
 Acq On : 05 Jul 2019 21:55
 Operator : SM\AJ
 Sample : INDA326
 Misc :
 ALS Vial : 54 Sample Multiplier: 1

Integration File signal 1: autoint1.e
 Integration File signal 2: autoint2.e
 Quant Time: Jul 05 23:15:08 2019
 Quant Method : Z:\pestpcbsrv\HPCHEM1\ECD_D\Method\PD070319CLP.M
 Quant Title : GC Extractables
 QLast Update : Fri Jul 05 03:58:18 2019
 Response via : Initial Calibration
 Integrator: ChemStation 6890 Scale Mode: Large solvent peaks clipped

Volume Inj. : 1 µl
 Signal #1 Phase : ZB-MR2 Signal #2 Phase: ZB-MR1
 Signal #1 Info : 30M x 0.32mm x0.2 Signal #2 Info : 30M x 0.32mm x 0.50µm



Instrument :
 ECD_D
 ClientSampleId :
 INDA326