

Data Path : Z:\pestpcbsrv\HPCHEM1\ECD_D\Data\PD070522\
 Data File : PD070717.D
 Signal(s) : Signal #1: ECD1A.ch Signal #2: ECD2B.ch
 Acq On : 05 Jul 2022 18:34
 Operator : AR\AJ
 Sample : N3564-07
 Misc :
 ALS Vial : 27 Sample Multiplier: 1

Instrument :
 ECD_D
ClientSampleId :
 WC-14B-11-2

Manual Integrations
APPROVED
 Reviewed By :Abdul Mirza 07/06/2022
 Supervised By :Ankita Jodhani 07/06/2022

Integration File signal 1: autoint1.e
 Integration File signal 2: autoint2.e
 Quant Time: Jul 05 23:45:24 2022
 Quant Method : Z:\pestpcbsrv\HPCHEM1\ECD_D\Method\PD070522.M
 Quant Title : GC Extractables
 QLast Update : Tue Jul 05 15:26:13 2022
 Response via : Initial Calibration
 Integrator: ChemStation

Volume Inj. : 2 µl
 Signal #1 Phase : ZB-MR2 Signal #2 Phase: ZB-MR1
 Signal #1 Info : 30M x 0.32mm x0.2 Signal #2 Info : 30M x 0.32mm x 0.50µm

Compound	RT#1	RT#2	Resp#1	Resp#2	ng/ml	ng/ml

System Monitoring Compounds						
1) SA Tetrachlo...	3.485	4.123	36812234	373.3E6	15.079	14.435
28) SA Decachlor...	8.263	9.310	39323038	142.7E6	15.859	17.342
Target Compounds						
16) A 4,4'-DDD	6.179	7.017	1308840	15635113	0.536	1.105m#

(f)=RT Delta > 1/2 Window (#)=Amounts differ by > 25% (m)=manual int.

Data Path : Z:\pestpcbsrv\HPCHEM1\ECD_D\Data\PD070522\
 Data File : PD070717.D
 Signal(s) : Signal #1: ECD1A.ch Signal #2: ECD2B.ch
 Acq On : 05 Jul 2022 18:34
 Operator : AR\AJ
 Sample : N3564-07
 Misc :
 ALS Vial : 27 Sample Multiplier: 1

Instrument :

ECD_D

ClientSampleId :

WC-14B-11-2

Manual Integrations

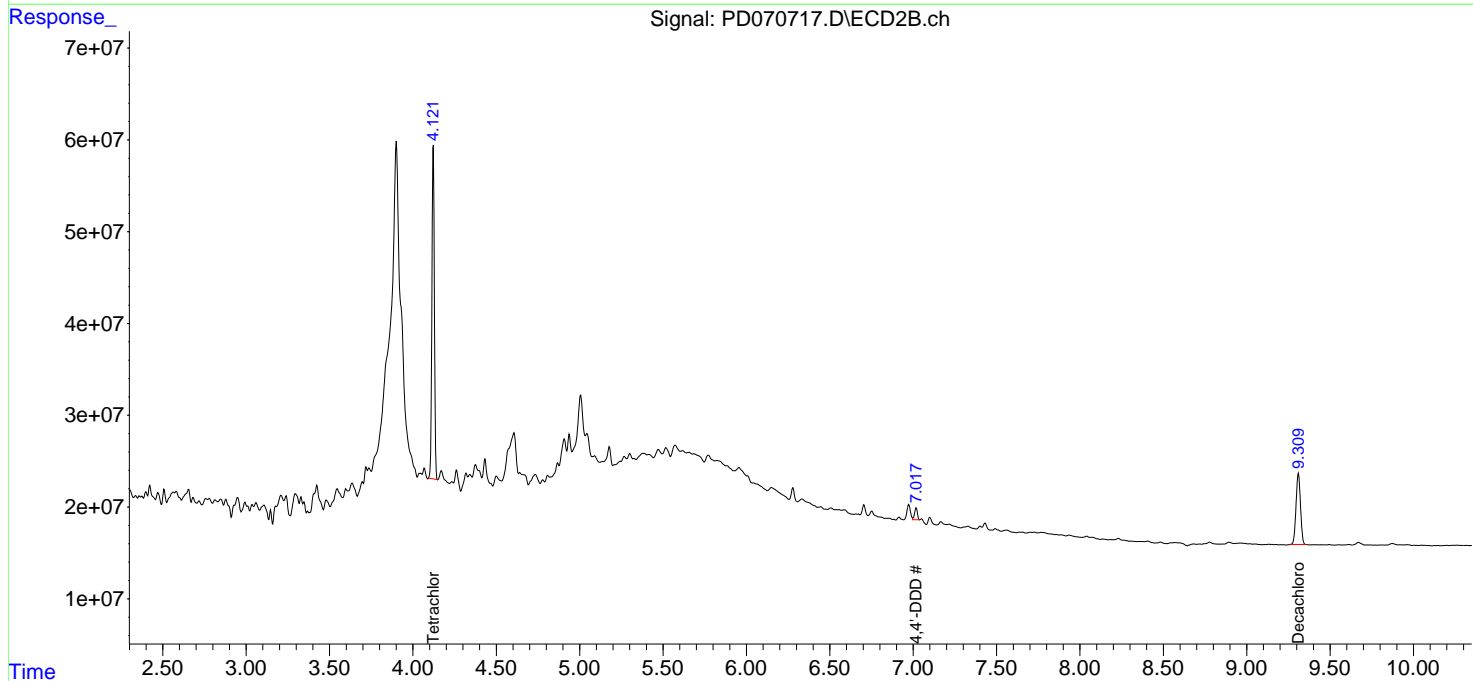
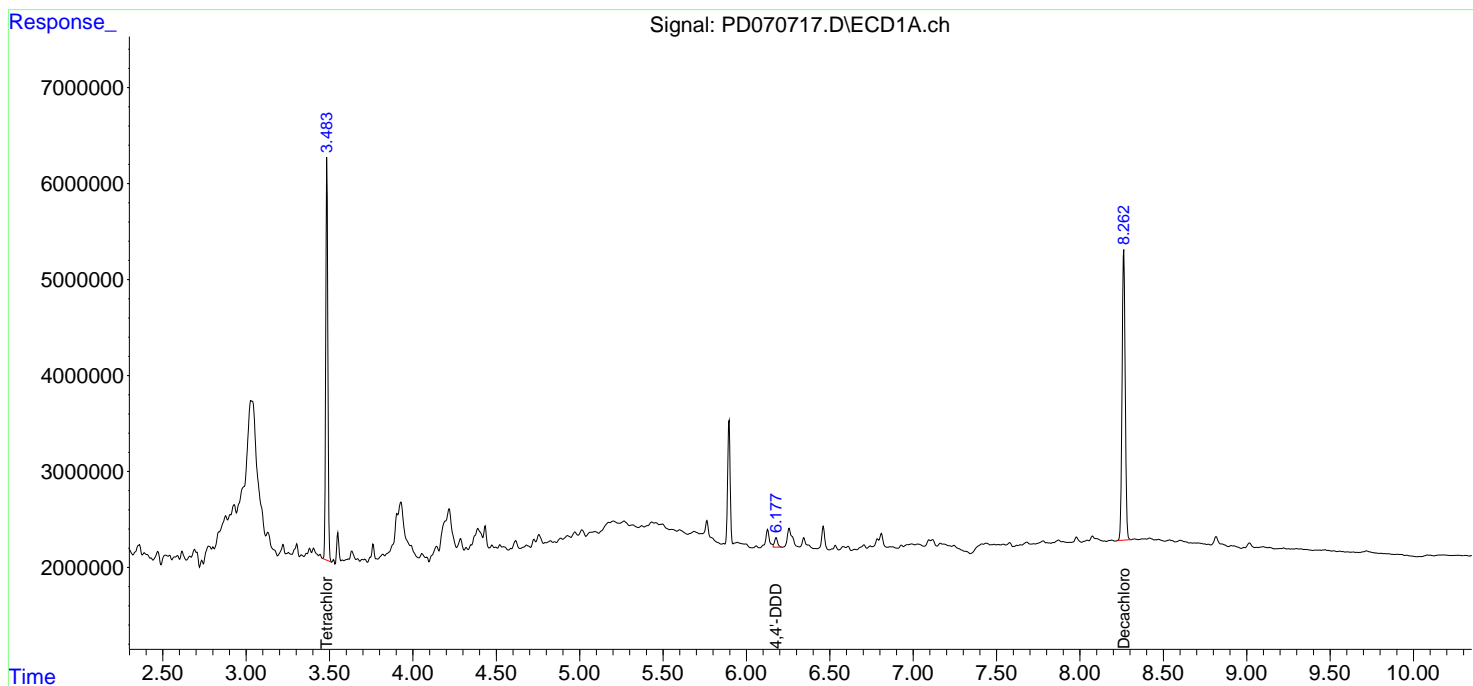
APPROVED

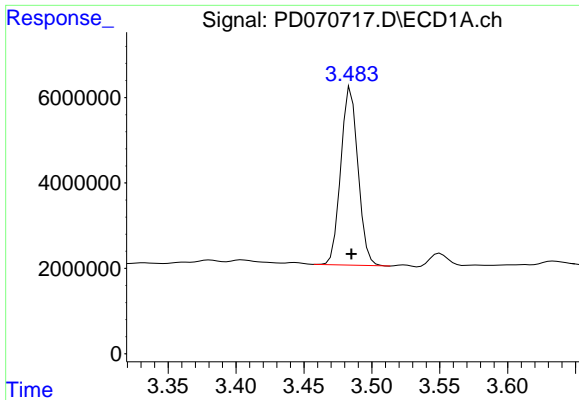
Reviewed By :Abdul Mirza 07/06/2022

Supervised By :Ankita Jodhani 07/06/2022

Integration File signal 1: autoint1.e
 Integration File signal 2: autoint2.e
 Quant Time: Jul 05 23:45:24 2022
 Quant Method : Z:\pestpcbsrv\HPCHEM1\ECD_D\Method\PD070522.M
 Quant Title : GC Extractables
 QLast Update : Tue Jul 05 15:26:13 2022
 Response via : Initial Calibration
 Integrator: ChemStation

Volume Inj. : 2 µl
 Signal #1 Phase : ZB-MR2 Signal #2 Phase: ZB-MR1
 Signal #1 Info : 30M x 0.32mm x0.2 Signal #2 Info : 30M x 0.32mm x 0.50µm





#1 Tetrachloro-m-xylene

R.T.: 3.485 min
 Delta R.T.: 0.000 min
 Response: 36812234
 Conc: 15.08 ng/ml

Instrument :

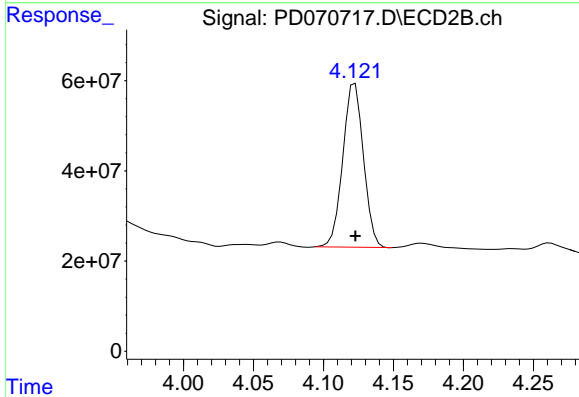
ECD_D

ClientSampleId :

WC-14B-11-2

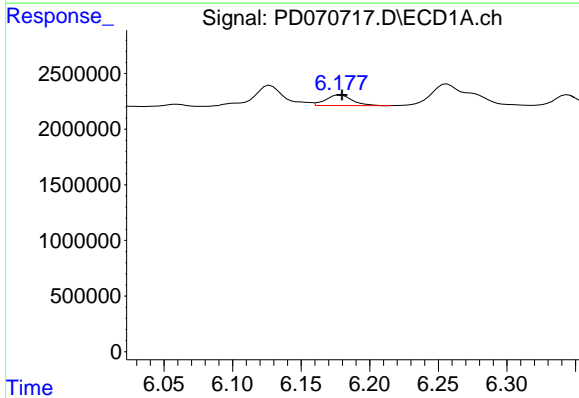
Manual Integrations
 APPROVED

Reviewed By :Abdul Mirza 07/06/2022
 Supervised By :Ankita Jodhani 07/06/2022



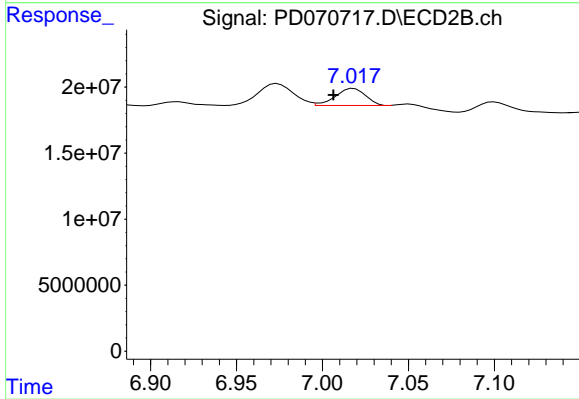
#1 Tetrachloro-m-xylene

R.T.: 4.123 min
 Delta R.T.: 0.000 min
 Response: 373309348
 Conc: 14.44 ng/ml



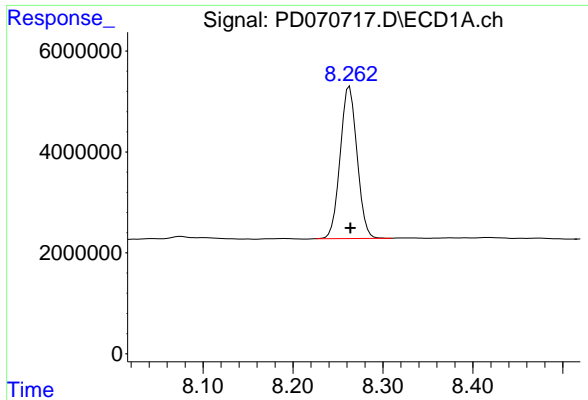
#16 4,4'-DDD

R.T.: 6.179 min
 Delta R.T.: -0.001 min
 Response: 1308840
 Conc: 0.54 ng/ml



#16 4,4'-DDD

R.T.: 7.017 min
 Delta R.T.: 0.010 min
 Response: 15635113
 Conc: 1.10 ng/ml m



#28 Decachlorobiphenyl

R.T.: 8.263 min
Delta R.T.: 0.000 min
Response: 39323038
Conc: 15.86 ng/ml

Instrument :

ECD_D

ClientSampleId :

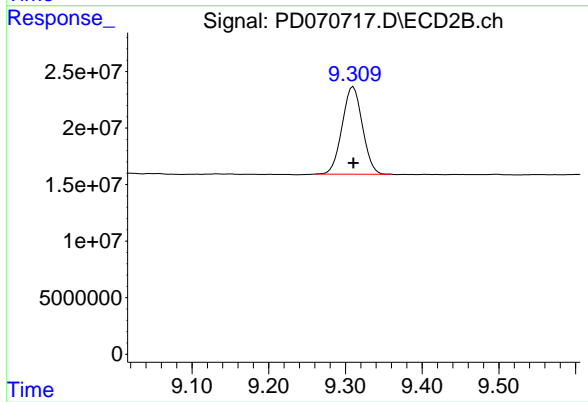
WC-14B-11-2

Manual Integrations

APPROVED

Reviewed By :Abdul Mirza 07/06/2022

Supervised By :Ankita Jodhani 07/06/2022



#28 Decachlorobiphenyl

R.T.: 9.310 min
Delta R.T.: 0.000 min
Response: 142672996
Conc: 17.34 ng/ml