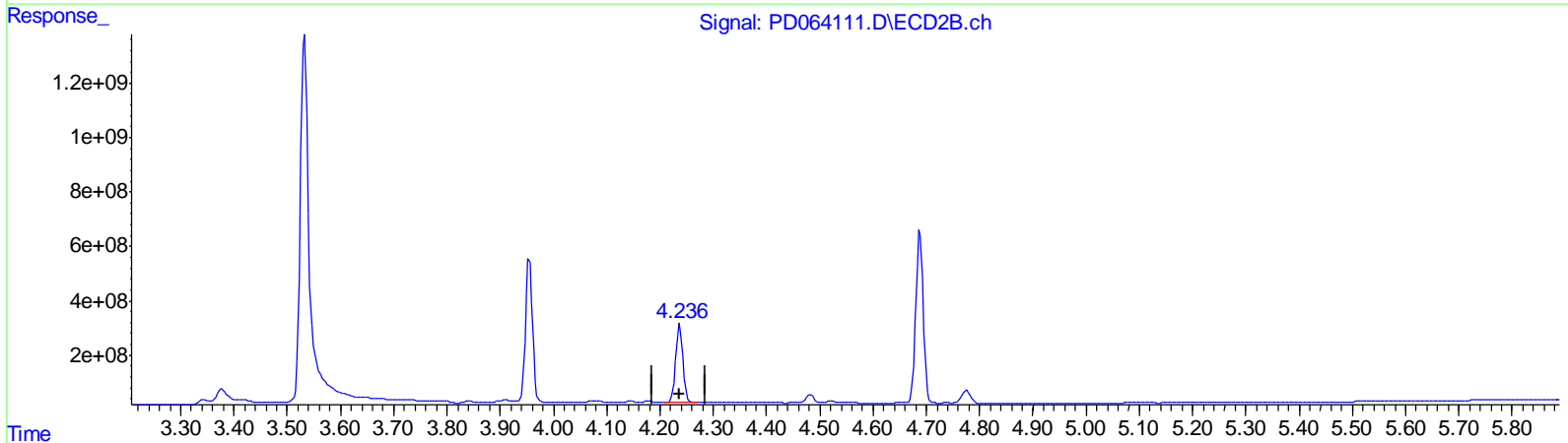
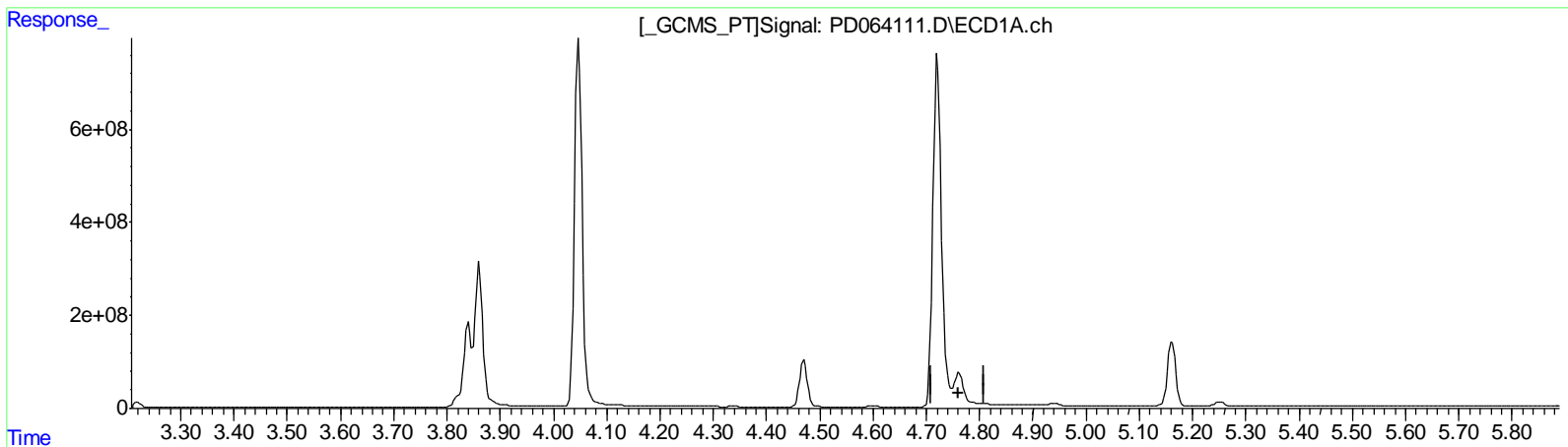


Data Path : Z:\pestpcbsrv\HPCHEM1\ECD_D\Data\PD070721\
 Data File : PD064111.D
 Signal(s) : Signal #1: ECD1A.ch Signal #2: ECD2B.ch
 Acq On : 07 Jul 2021 13:25
 Operator : AR\AJ
 Sample : M2905-09
 Misc :
 ALS Vial : 14 Sample Multiplier: 1

Integration File signal 1: autoint1.e
 Integration File signal 2: autoint2.e
 Quant Time: Jul 08 04:23:25 2021
 Quant Method : Z:\pestpcbsrv\HPCHEM1\ECD_D\Method\PD070621CLP.M
 Quant Title : GC Extractables
 QLast Update : Thu Jul 08 02:29:57 2021
 Response via : Initial Calibration
 Integrator: ChemStation

Volume Inj. : 1 µl
 Signal #1 Phase : ZB-MR2 Signal #2 Phase: ZB-MR1
 Signal #1 Info : 30M x 0.32mm x0.2 Signal #2 Info : 30M x 0.32mm x 0.50µm



QEdit

(3) gamma-BHC (Lindane) (MA)

4.762min -5790.960 ng/ml

response -10949457235

(3) gamma-BHC (Lindane) #2 (MA)

4.237min 271.686 ng/ml

response 2710500237