

Data Path : Z:\pestpcbsrv\HPCHEM1\ECD\_D\Data\PD070621\  
 Data File : PD064086.D  
 Signal(s) : Signal #1: ECD1A.ch Signal #2: ECD2B.ch  
 Acq On : 06 Jul 2021 17:35  
 Operator : AR\AJ  
 Sample : INDA101  
 Misc :  
 ALS Vial : 9 Sample Multiplier: 1

Instrument :  
 ECD\_D  
 ClientSampleId :

Integration File signal 1: autoint1.e  
 Integration File signal 2: autoint2.e  
 Quant Time: Jul 07 05:31:58 2021  
 Quant Method : Z:\pestpcbsrv\HPCHEM1\ECD\_D\Method\PD070621CLP.M  
 Quant Title : GC Extractables  
 QLast Update : Wed Jul 07 05:31:33 2021  
 Response via : Initial Calibration  
 Integrator: ChemStation

Volume Inj. : 1 µl  
 Signal #1 Phase : ZB-MR2 Signal #2 Phase: ZB-MR1  
 Signal #1 Info : 30M x 0.32mm x0.2 Signal #2 Info : 30M x 0.32mm x 0.50µm

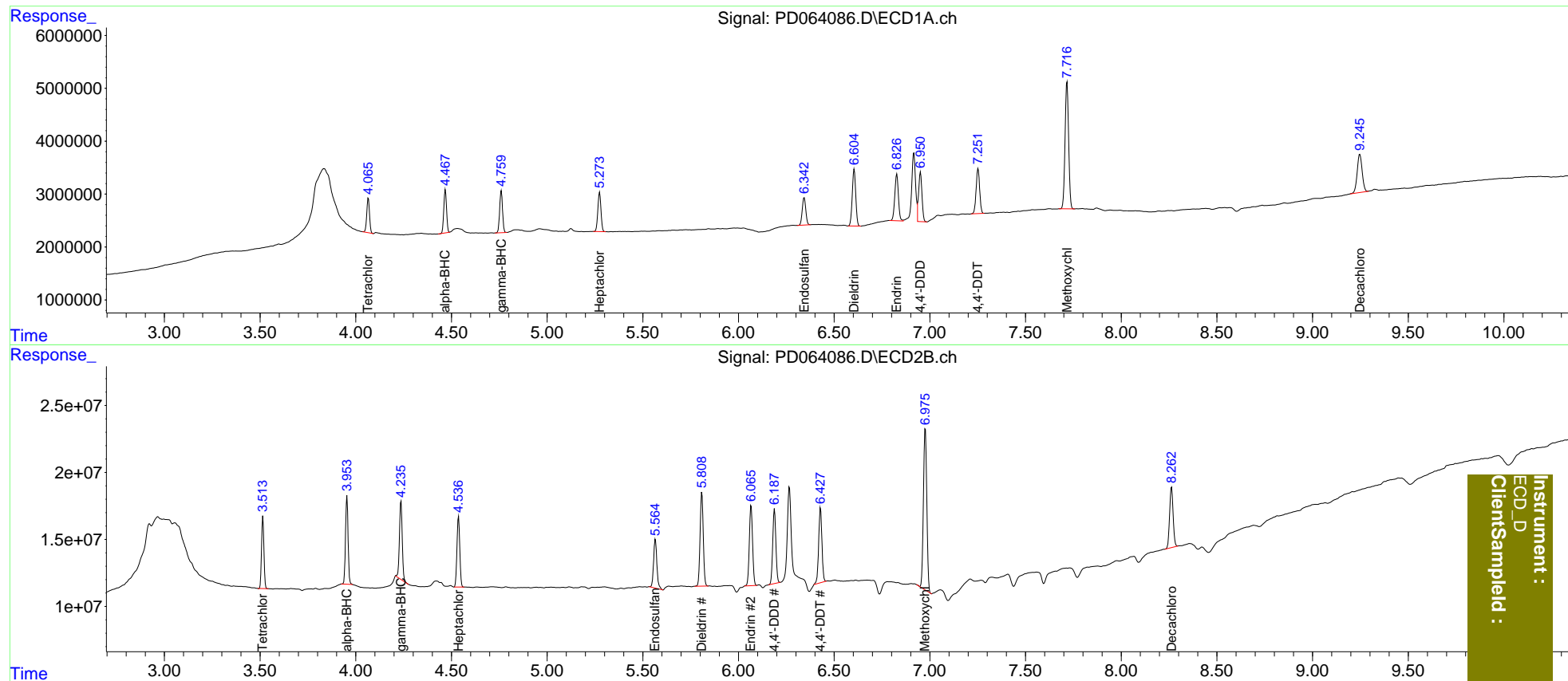
	Compound	RT#1	RT#2	Resp#1	Resp#2	ng/ml	ng/ml
-----							
System Monitoring Compounds							
1)	SA Tetrachlo...	4.066	3.515	6513731	46560260	4.580	5.857 #
27)	SA Decachlor...	9.247	8.263	13141058	57551845	9.765	11.571
Target Compounds							
2)	A alpha-BHC	4.468	3.954	8091758	61389289	4.048	5.911 #
3)	MA gamma-BHC...	4.761	4.237	8281382	58727575	4.347	6.136 #
4)	MA Heptachlor	5.274	4.537	8433077	53747222	4.434	5.791 #
9)	A Endosulfan I	6.343	5.566	6629299	43467503	4.468	6.042 #
13)	MA Dieldrin	6.605	5.809	13558353	80366856	9.025	11.170
14)	MA Endrin	6.828	6.066	11538944	70475085	9.242	11.539
16)	A 4,4'-DDD	6.951	6.188	11538438	63477247	8.667	11.028 #
17)	MA 4,4'-DDT	7.252	6.429	10849752	65895866	8.414	11.014 #
20)	A Methoxychlor	7.717	6.976	31173255	149.2E6	44.950	53.787
-----							

(f)=RT Delta > 1/2 Window (#)=Amounts differ by > 25% (m)=manual int.

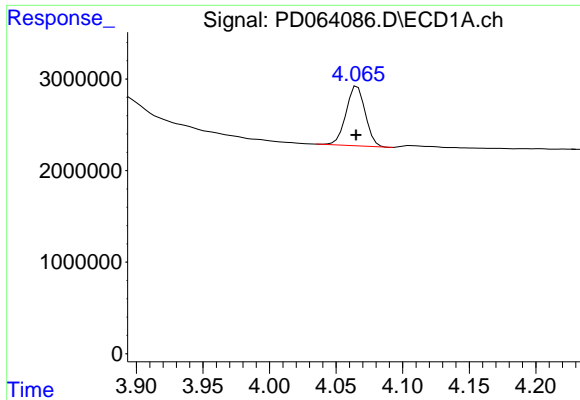
Data Path : Z:\pestpcbsrv\HPCHEM1\ECD\_D\Data\PD070621\  
 Data File : PD064086.D  
 Signal(s) : Signal #1: ECD1A.ch Signal #2: ECD2B.ch  
 Acq On : 06 Jul 2021 17:35  
 Operator : AR\AJ  
 Sample : INDA101  
 Misc :  
 ALS Vial : 9 Sample Multiplier: 1

Integration File signal 1: autoint1.e  
 Integration File signal 2: autoint2.e  
 Quant Time: Jul 07 05:31:58 2021  
 Quant Method : Z:\pestpcbsrv\HPCHEM1\ECD\_D\Method\PD070621CLP.M  
 Quant Title : GC Extractables  
 QLast Update : Wed Jul 07 05:31:33 2021  
 Response via : Initial Calibration  
 Integrator: ChemStation

Volume Inj. : 1 µl  
 Signal #1 Phase : ZB-MR2 Signal #2 Phase: ZB-MR1  
 Signal #1 Info : 30M x 0.32mm x0.2 Signal #2 Info : 30M x 0.32mm x 0.50µm

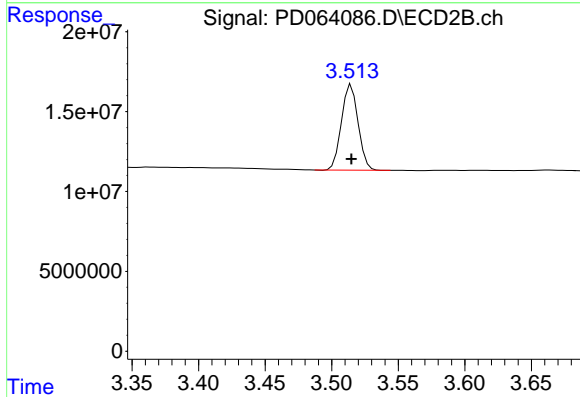


Instrument :  
 ECD\_D  
 ClientSampleId :

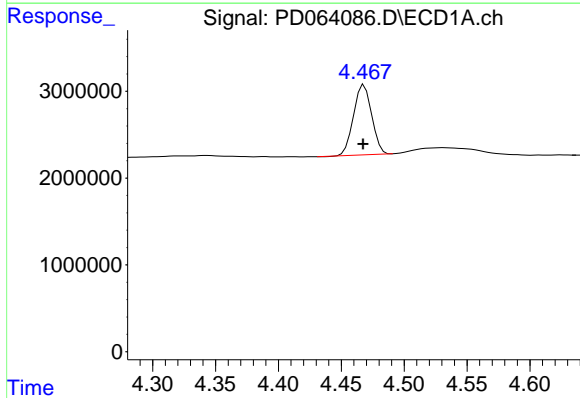


#1 Tetrachloro-m-xylene  
 R.T.: 4.066 min  
 Delta R.T.: 0.001 min  
 Response: 6513731  
 Conc: 4.58 ng/ml

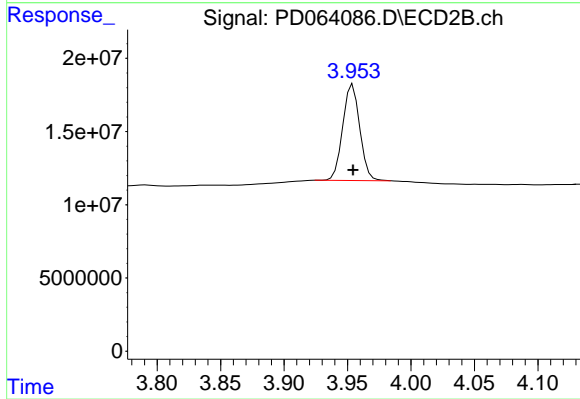
Instrument :  
 ECD\_D  
 ClientSampleId :



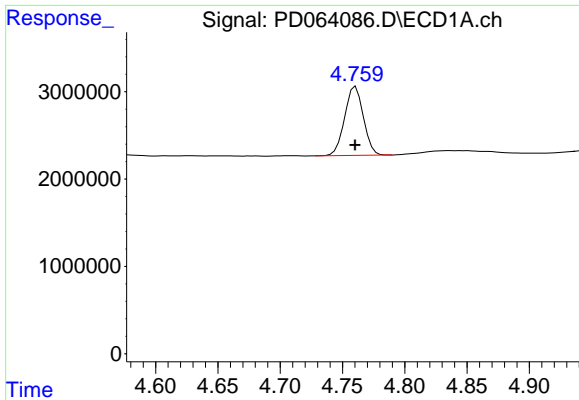
#1 Tetrachloro-m-xylene  
 R.T.: 3.515 min  
 Delta R.T.: 0.000 min  
 Response: 46560260  
 Conc: 5.86 ng/ml



#2 alpha-BHC  
 R.T.: 4.468 min  
 Delta R.T.: 0.000 min  
 Response: 8091758  
 Conc: 4.05 ng/ml

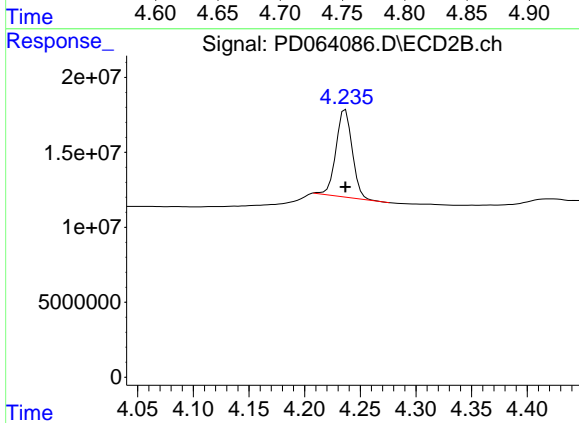


#2 alpha-BHC  
 R.T.: 3.954 min  
 Delta R.T.: 0.000 min  
 Response: 61389289  
 Conc: 5.91 ng/ml

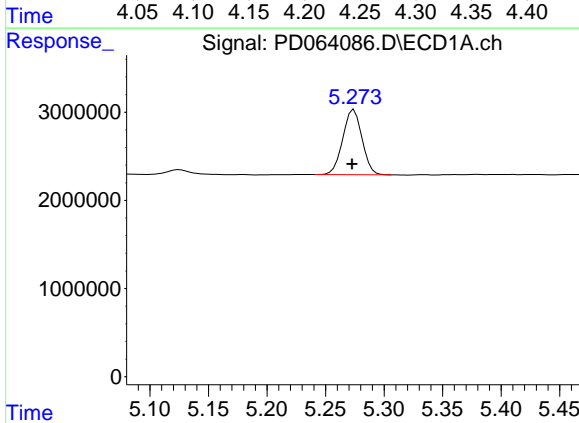


#3 gamma-BHC (Lindane)  
 R.T.: 4.761 min  
 Delta R.T.: 0.000 min  
 Response: 8281382  
 Conc: 4.35 ng/ml

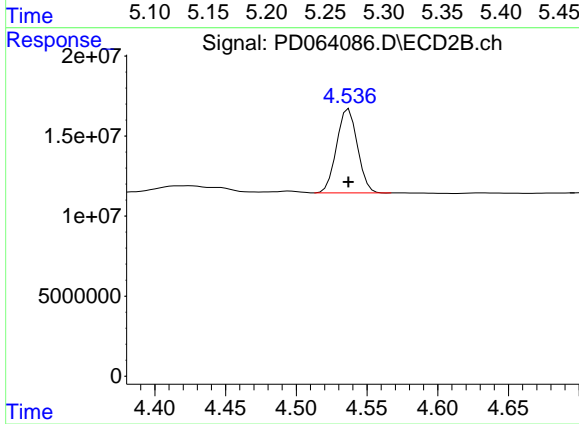
Instrument :  
 ECD\_D  
 ClientSampleId :



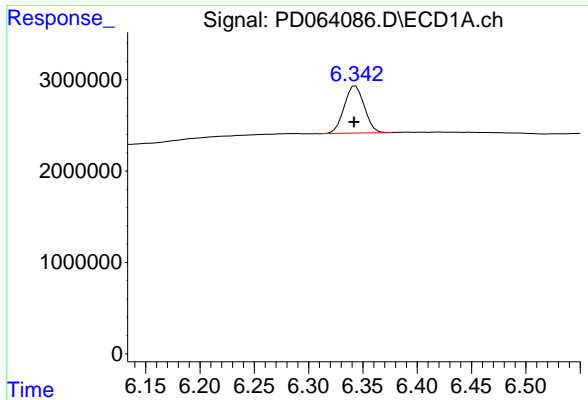
#3 gamma-BHC (Lindane)  
 R.T.: 4.237 min  
 Delta R.T.: 0.000 min  
 Response: 58727575  
 Conc: 6.14 ng/ml



#4 Heptachlor  
 R.T.: 5.274 min  
 Delta R.T.: 0.002 min  
 Response: 8433077  
 Conc: 4.43 ng/ml



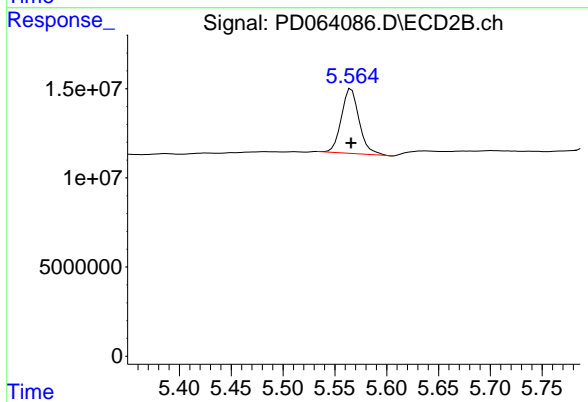
#4 Heptachlor  
 R.T.: 4.537 min  
 Delta R.T.: 0.000 min  
 Response: 53747222  
 Conc: 5.79 ng/ml



#9 Endosulfan I

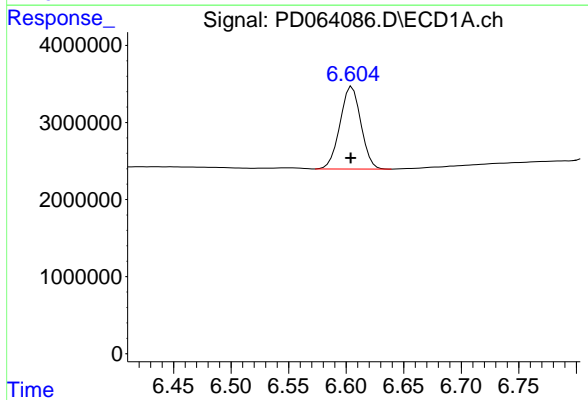
R.T.: 6.343 min  
 Delta R.T.: 0.001 min  
 Response: 6629299  
 Conc: 4.47 ng/ml

Instrument :  
 ECD\_D  
 ClientSampled :



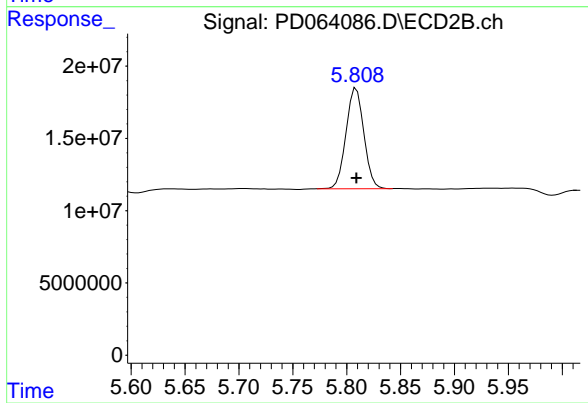
#9 Endosulfan I

R.T.: 5.566 min  
 Delta R.T.: 0.000 min  
 Response: 43467503  
 Conc: 6.04 ng/ml



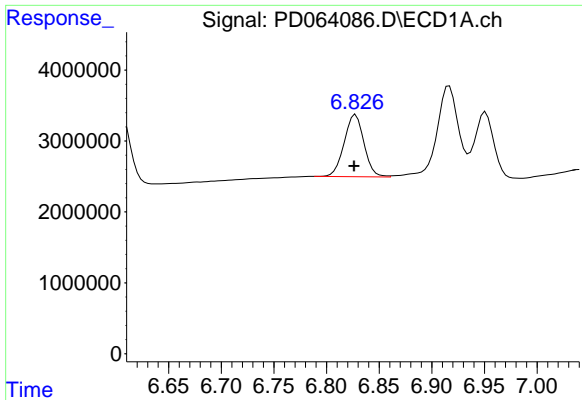
#13 Dieldrin

R.T.: 6.605 min  
 Delta R.T.: 0.001 min  
 Response: 13558353  
 Conc: 9.02 ng/ml



#13 Dieldrin

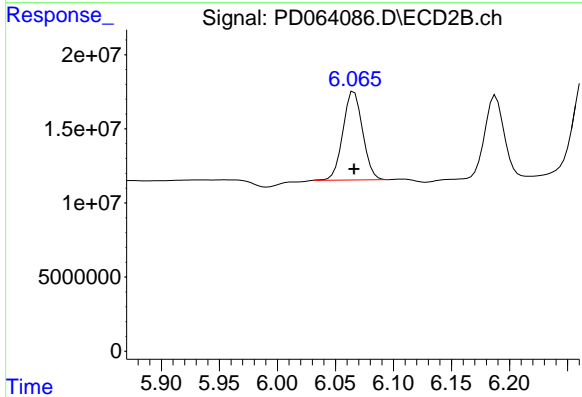
R.T.: 5.809 min  
 Delta R.T.: 0.000 min  
 Response: 80366856  
 Conc: 11.17 ng/ml



#14 Endrin

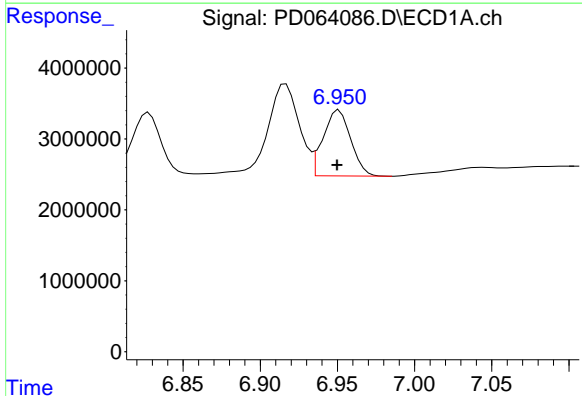
R.T.: 6.828 min  
 Delta R.T.: 0.001 min  
 Response: 11538944  
 Conc: 9.24 ng/ml

Instrument :  
 ECD\_D  
 ClientSampleId :



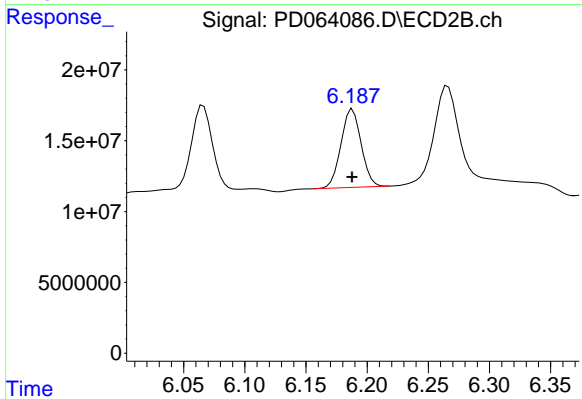
#14 Endrin

R.T.: 6.066 min  
 Delta R.T.: 0.000 min  
 Response: 70475085  
 Conc: 11.54 ng/ml



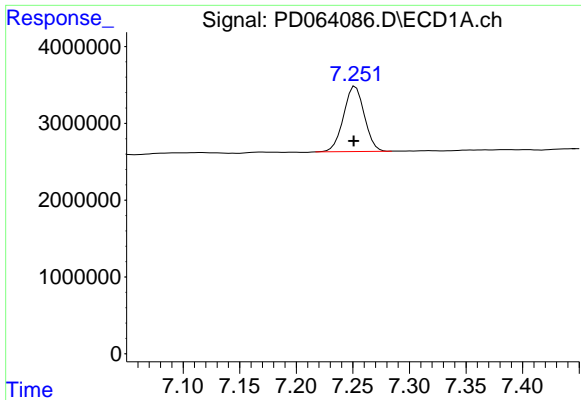
#16 4,4'-DDD

R.T.: 6.951 min  
 Delta R.T.: 0.001 min  
 Response: 11538438  
 Conc: 8.67 ng/ml



#16 4,4'-DDD

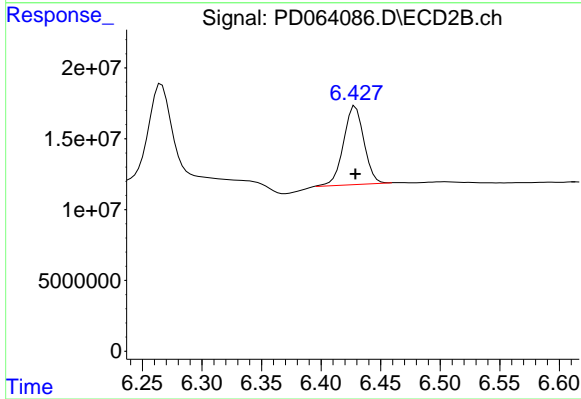
R.T.: 6.188 min  
 Delta R.T.: 0.000 min  
 Response: 63477247  
 Conc: 11.03 ng/ml



#17 4,4'-DDT

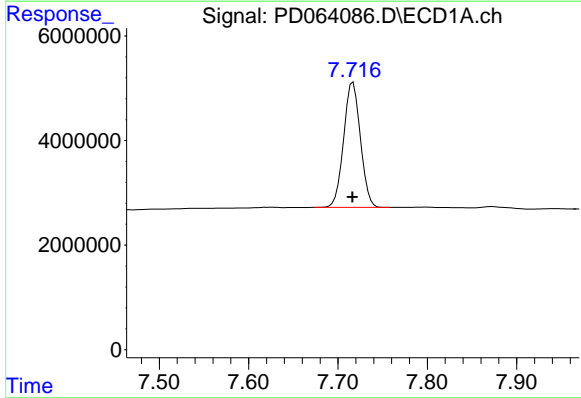
R.T.: 7.252 min  
 Delta R.T.: 0.002 min  
 Response: 10849752  
 Conc: 8.41 ng/ml

Instrument :  
 ECD\_D  
 ClientSampled :



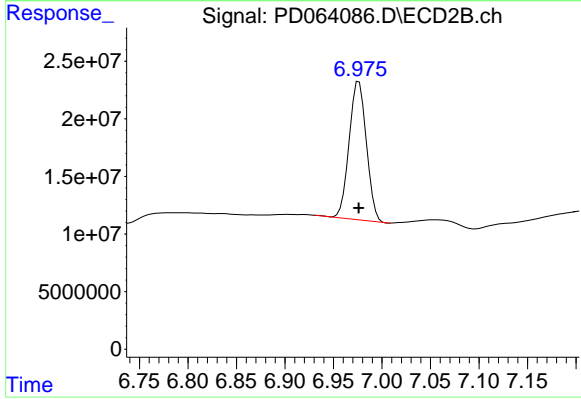
#17 4,4'-DDT

R.T.: 6.429 min  
 Delta R.T.: 0.000 min  
 Response: 65895866  
 Conc: 11.01 ng/ml



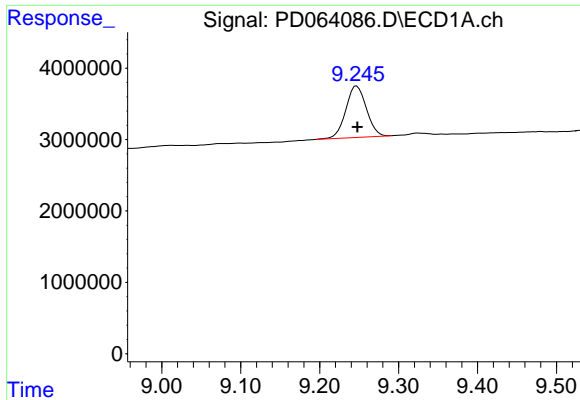
#20 Methoxychlor

R.T.: 7.717 min  
 Delta R.T.: 0.000 min  
 Response: 31173255  
 Conc: 44.95 ng/ml



#20 Methoxychlor

R.T.: 6.976 min  
 Delta R.T.: 0.000 min  
 Response: 149215243  
 Conc: 53.79 ng/ml



#27 Decachlorobiphenyl

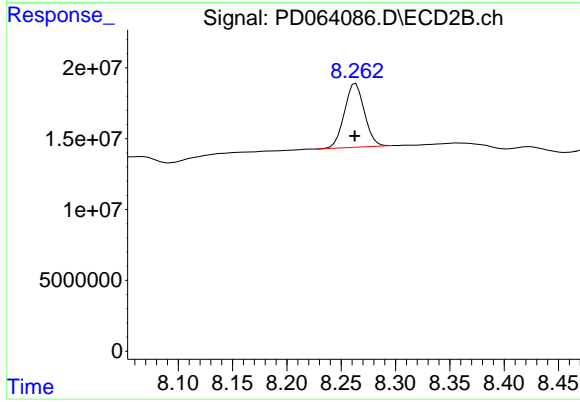
R.T.: 9.247 min

Delta R.T.: 0.000 min

Response: 13141058

Conc: 9.77 ng/ml

Instrument :  
ECD\_D  
ClientSampleId :



#27 Decachlorobiphenyl

R.T.: 8.263 min

Delta R.T.: 0.000 min

Response: 57551845

Conc: 11.57 ng/ml