

Data Path : Z:\pestpcbsrv\HPCHEM1\ECD_D\Data\PD070622\
 Data File : PD070732.D
 Signal(s) : Signal #1: ECD1A.ch Signal #2: ECD2B.ch
 Acq On : 06 Jul 2022 11:36
 Operator : AR\AJ
 Sample : N3564-32
 Misc :
 ALS Vial : 5 Sample Multiplier: 1

Instrument :
 ECD_D
 ClientSampleId :
 WC-16-2-3

Integration File signal 1: autoint1.e
 Integration File signal 2: autoint2.e
 Quant Time: Jul 07 00:06:10 2022
 Quant Method : Z:\pestpcbsrv\HPCHEM1\ECD_D\Method\PD070522.M
 Quant Title : GC Extractables
 QLast Update : Tue Jul 05 15:26:13 2022
 Response via : Initial Calibration
 Integrator: ChemStation

Volume Inj. : 2 µl
 Signal #1 Phase : ZB-MR2 Signal #2 Phase: ZB-MR1
 Signal #1 Info : 30M x 0.32mm x0.2 Signal #2 Info : 30M x 0.32mm x 0.50µm

Compound	RT#1	RT#2	Resp#1	Resp#2	ng/ml	ng/ml

System Monitoring Compounds						
1) SA Tetrachlo...	3.485	4.123	38720637	452.3E6	15.861	17.491
28) SA Decachlor...	8.264	9.312	35074140	125.8E6	14.145	15.297

Target Compounds

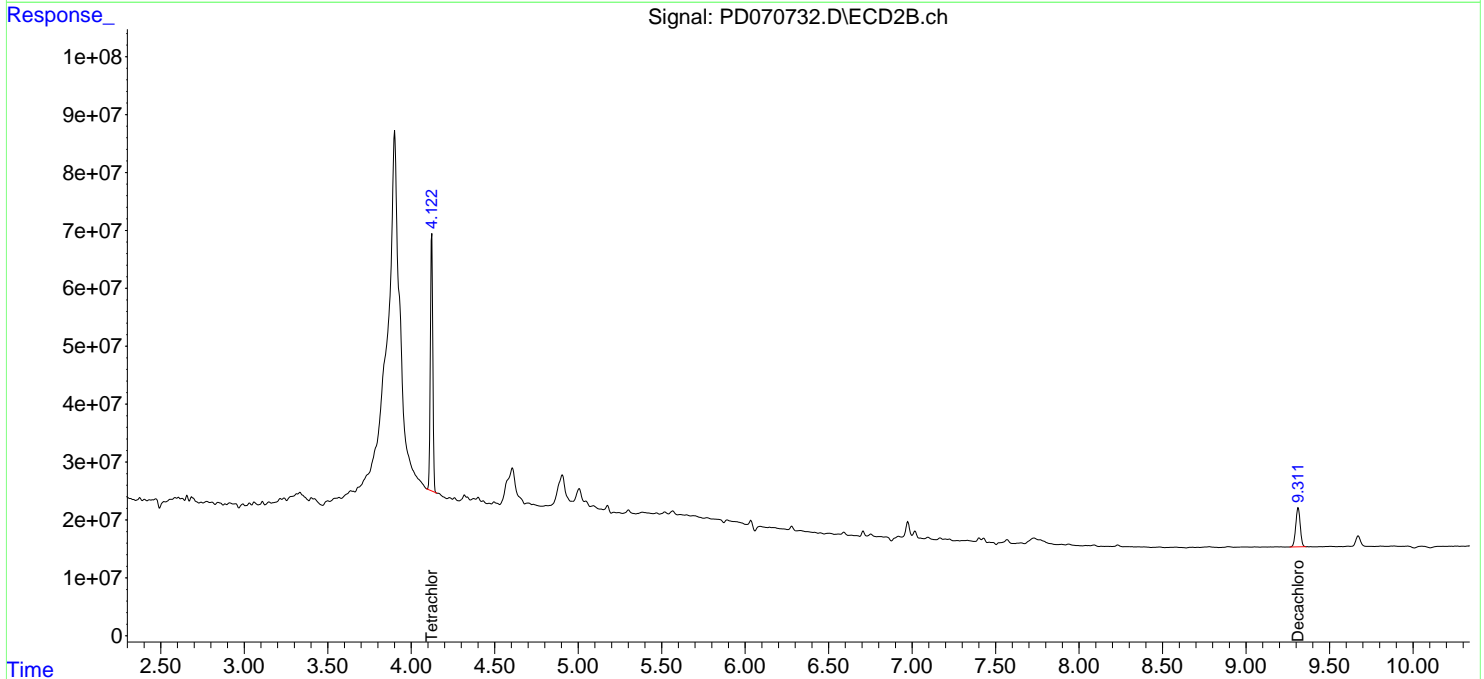
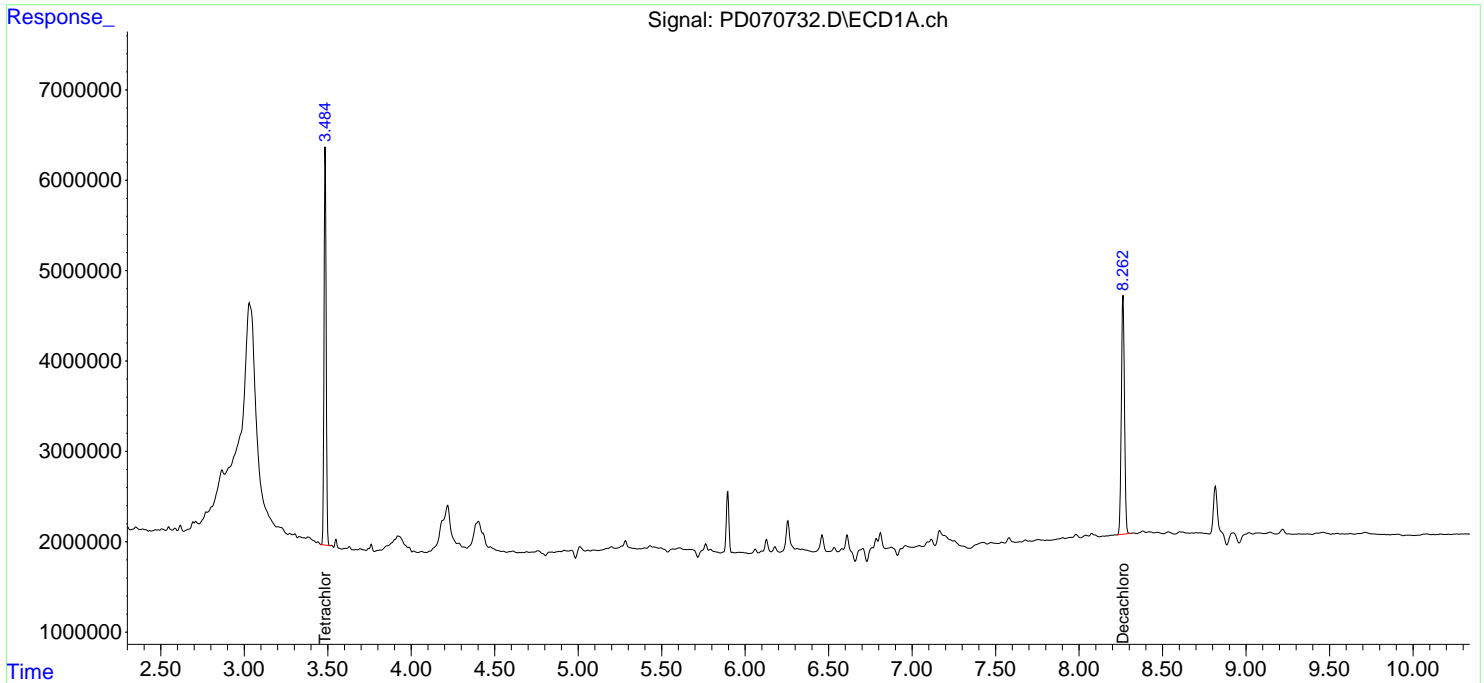
 (f)=RT Delta > 1/2 Window (#)=Amounts differ by > 25% (m)=manual int.

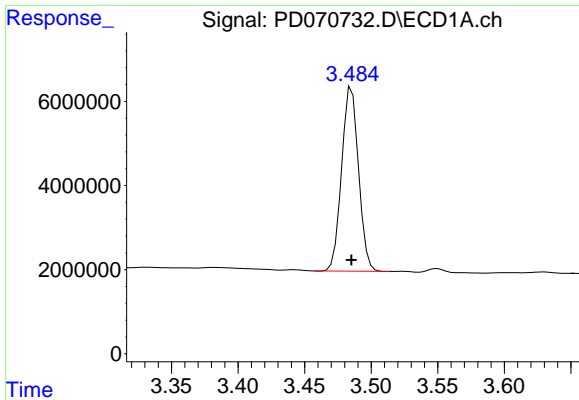
Data Path : Z:\pestpcbsrv\HPCHEM1\ECD_D\Data\PD070622\
 Data File : PD070732.D
 Signal(s) : Signal #1: ECD1A.ch Signal #2: ECD2B.ch
 Acq On : 06 Jul 2022 11:36
 Operator : AR\AJ
 Sample : N3564-32
 Misc :
 ALS Vial : 5 Sample Multiplier: 1

Instrument :
 ECD_D
 ClientSampleId :
 WC-16-2-3

Integration File signal 1: autoint1.e
 Integration File signal 2: autoint2.e
 Quant Time: Jul 07 00:06:10 2022
 Quant Method : Z:\pestpcbsrv\HPCHEM1\ECD_D\Method\PD070522.M
 Quant Title : GC Extractables
 QLast Update : Tue Jul 05 15:26:13 2022
 Response via : Initial Calibration
 Integrator: ChemStation

Volume Inj. : 2 µl
 Signal #1 Phase : ZB-MR2 Signal #2 Phase: ZB-MR1
 Signal #1 Info : 30M x 0.32mm x 0.2 Signal #2 Info : 30M x 0.32mm x 0.50µm

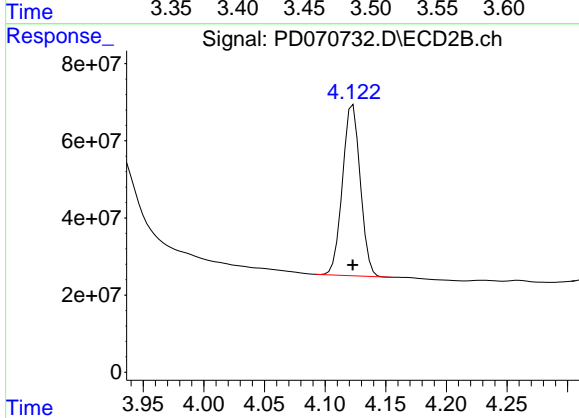




#1 Tetrachloro-m-xylene

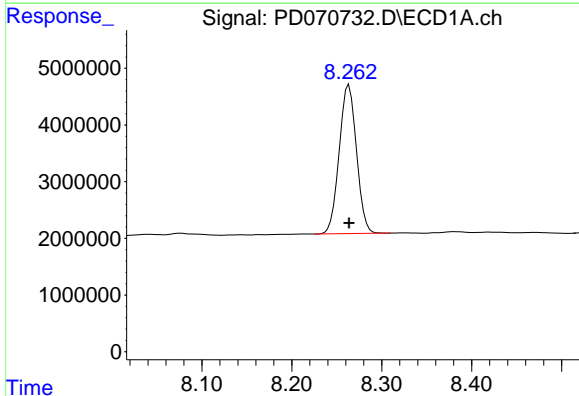
R.T.: 3.485 min
 Delta R.T.: 0.000 min
 Response: 38720637
 Conc: 15.86 ng/ml

Instrument :
 ECD_D
 ClientSampleId :
 WC-16-2-3



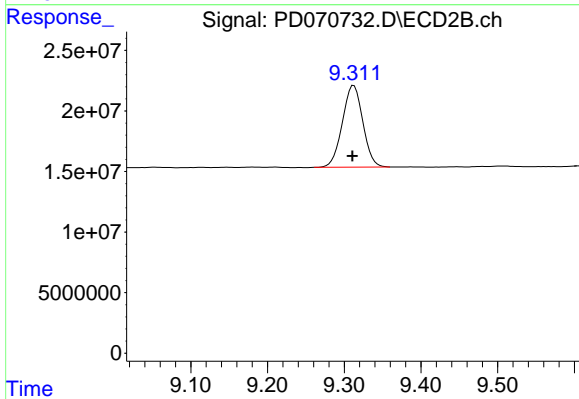
#1 Tetrachloro-m-xylene

R.T.: 4.123 min
 Delta R.T.: 0.000 min
 Response: 452337711
 Conc: 17.49 ng/ml



#28 Decachlorobiphenyl

R.T.: 8.264 min
 Delta R.T.: 0.000 min
 Response: 35074140
 Conc: 14.15 ng/ml



#28 Decachlorobiphenyl

R.T.: 9.312 min
 Delta R.T.: 0.002 min
 Response: 125848548
 Conc: 15.30 ng/ml