

Data Path : Z:\pestpcbsrv\HPCHEM1\ECD_D\Data\PD070721\
 Data File : PD064147.D
 Signal(s) : Signal #1: ECD1A.ch Signal #2: ECD2B.ch
 Acq On : 08 Jul 2021 00:05
 Operator : AR\AJ
 Sample : INDB321
 Misc :
 ALS Vial : 24 Sample Multiplier: 1

Instrument :
 ECD_D
 ClientSampleId :

Integration File signal 1: autoint1.e
 Integration File signal 2: autoint2.e
 Quant Time: Jul 08 04:33:36 2021
 Quant Method : Z:\pestpcbsrv\HPCHEM1\ECD_D\Method\PD070621CLP.M
 Quant Title : GC Extractables
 QLast Update : Thu Jul 08 02:29:57 2021
 Response via : Initial Calibration
 Integrator: ChemStation

Volume Inj. : 1 µl
 Signal #1 Phase : ZB-MR2 Signal #2 Phase: ZB-MR1
 Signal #1 Info : 30M x 0.32mm x0.2 Signal #2 Info : 30M x 0.32mm x 0.50µm

	Compound	RT#1	RT#2	Resp#1	Resp#2	ng/ml	ng/ml

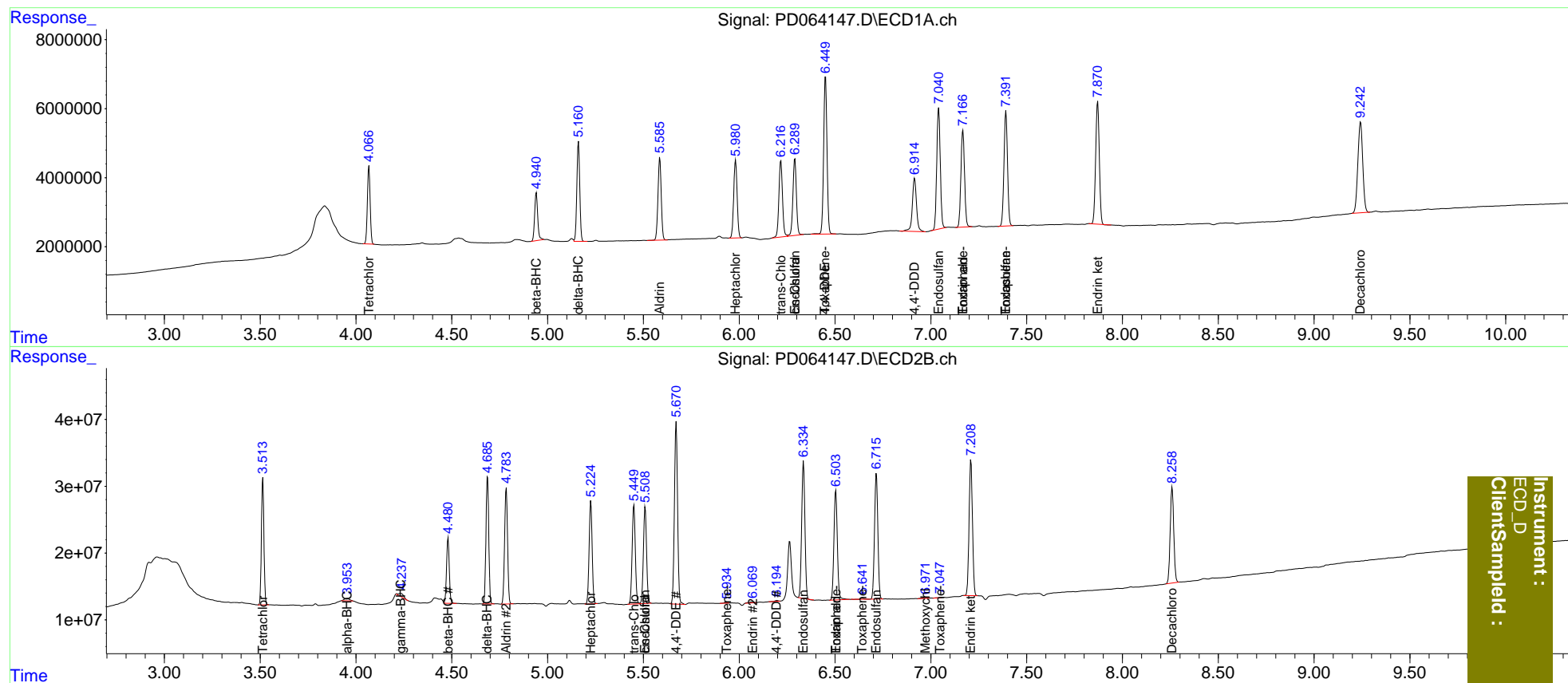
System Monitoring Compounds							
1)	SA Tetrachlo...	4.068	3.514	22673861	172.4E6	16.146	21.259 #
2)	SA Decachlor...	9.243	8.259	46816761	185.3E6	35.312	36.521
Target Compounds							
2)	A alpha-BHC	0.000	3.955	0	7011607	N.D.	0.653
3)	MA gamma-BHC...	0.000	4.234	0	7974725	N.D.	0.799
5)	MB Aldrin	5.586	4.784	28287366	187.1E6	17.017	21.561 #
6)	B beta-BHC	4.941	4.481	15527080	97236914	17.596	21.336
7)	B delta-BHC	5.161	4.687	30544253	194.2E6	16.694	21.618 #
8)	B Heptachlo...	5.981	5.226	27848641	168.5E6	17.649	22.772 #
9)	A Endosulfan I	6.290f	5.510f	27966944	164.9E6	19.215	21.919
10)	B trans-Chl...	6.217	5.451	28828901	170.2E6	17.982	21.839
11)	B cis-Chlor...	6.290	5.510	27966944	164.9E6	17.950	21.794
12)	B 4,4'-DDE	6.450	5.672	55731517	312.7E6	35.453	43.972
14)	MA Endrin	0.000	6.070	0	2806573	N.D.	0.447
15)	B Endosulfa...	7.041	6.335	44894337	240.2E6	34.226	41.006
16)	A 4,4'-DDD	6.916f	6.197	23410176	1089771	17.943	0.185 #
18)	B Endrin al...	7.167	6.504	37010819	204.3E6	35.159	41.609
19)	B Endosulfa...	7.392	6.716	42537344	228.1E6	34.191	45.593 #
20)	A Methoxychlor	0.000	6.973	0	1325317	N.D.	0.477
21)	B Endrin ke...	7.871	7.210	47102827	247.6E6	33.705	39.870
22)	Toxaphene-1	6.450	0.000	55731517	0	7943.494	N.D. #
23)	Toxaphene-2	0.000	5.935	0	457115	N.D.	9.087
24)	Toxaphene-3	7.167	6.504	37010819	204.3E6	3390.703	2547.473
25)	Toxaphene-4	7.392	6.643	42537344	2103199	1979.747	18.484 #
26)	Toxaphene-5	0.000	7.048	0	313732	N.D.	4.065

(f)=RT Delta > 1/2 Window (#)=Amounts differ by > 25% (m)=manual int.

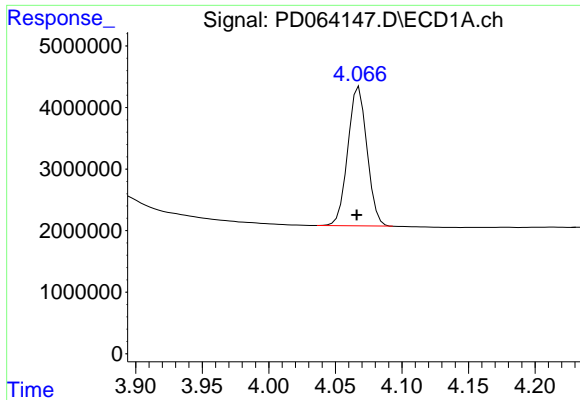
Data Path : Z:\pestpcbsrv\HPCHEM1\ECD_D\Data\PD070721\
 Data File : PD064147.D
 Signal(s) : Signal #1: ECD1A.ch Signal #2: ECD2B.ch
 Acq On : 08 Jul 2021 00:05
 Operator : AR\AJ
 Sample : INDB321
 Misc :
 ALS Vial : 24 Sample Multiplier: 1

Integration File signal 1: autoint1.e
 Integration File signal 2: autoint2.e
 Quant Time: Jul 08 04:33:36 2021
 Quant Method : Z:\pestpcbsrv\HPCHEM1\ECD_D\Method\PD070621CLP.M
 Quant Title : GC Extractables
 QLast Update : Thu Jul 08 02:29:57 2021
 Response via : Initial Calibration
 Integrator: ChemStation

Volume Inj. : 1 µl
 Signal #1 Phase : ZB-MR2 Signal #2 Phase: ZB-MR1
 Signal #1 Info : 30M x 0.32mm x0.2 Signal #2 Info : 30M x 0.32mm x 0.50µm

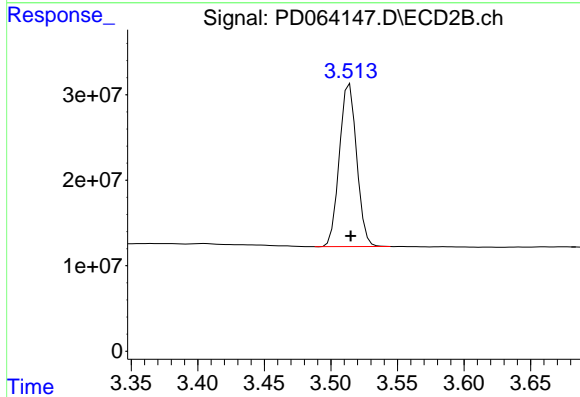


Instrument :
 ECD_D
 ClientSampleId :

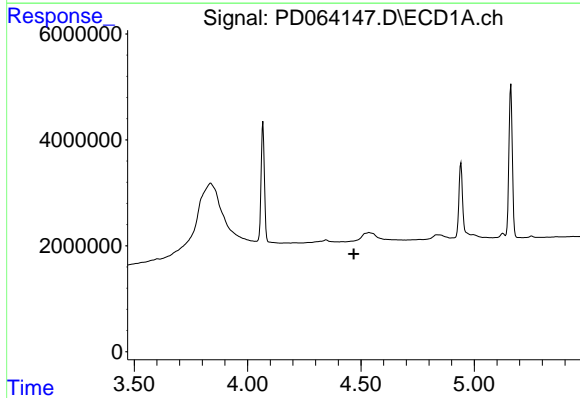


#1 Tetrachloro-m-xylene
 R.T.: 4.068 min
 Delta R.T.: 0.002 min
 Response: 22673861
 Conc: 16.15 ng/ml

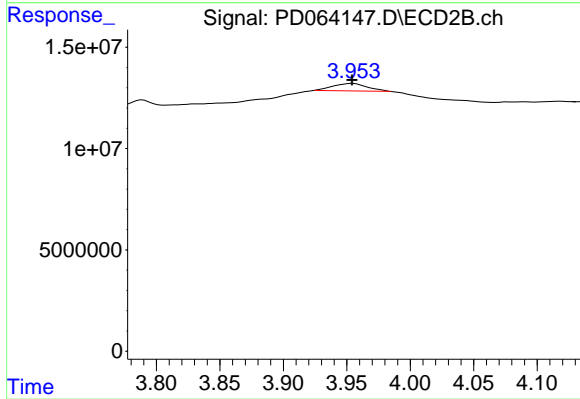
Instrument :
 ECD_D
 ClientSampled :



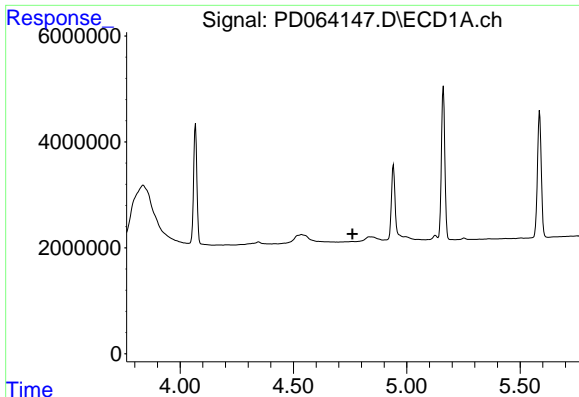
#1 Tetrachloro-m-xylene
 R.T.: 3.514 min
 Delta R.T.: 0.000 min
 Response: 172374058
 Conc: 21.26 ng/ml



#2 alpha-BHC
 R.T.: 0.000 min
 Exp R.T. : 4.468 min
 Response: 0
 Conc: N.D.

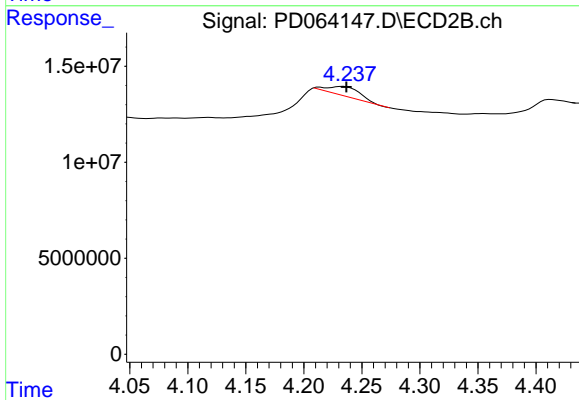


#2 alpha-BHC
 R.T.: 3.955 min
 Delta R.T.: 0.000 min
 Response: 7011607
 Conc: 0.65 ng/ml

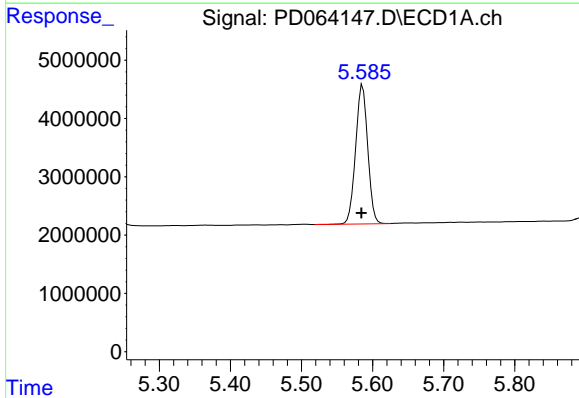


#3 gamma-BHC (Lindane)
 R.T.: 0.000 min
 Exp R.T.: 4.761 min
 Response: 0
 Conc: N.D.

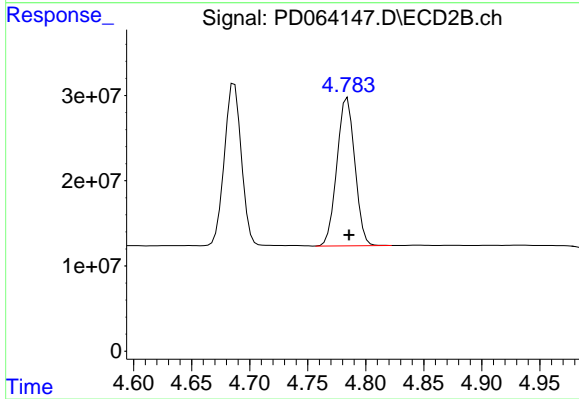
Instrument :
 ECD_D
 ClientSampled :



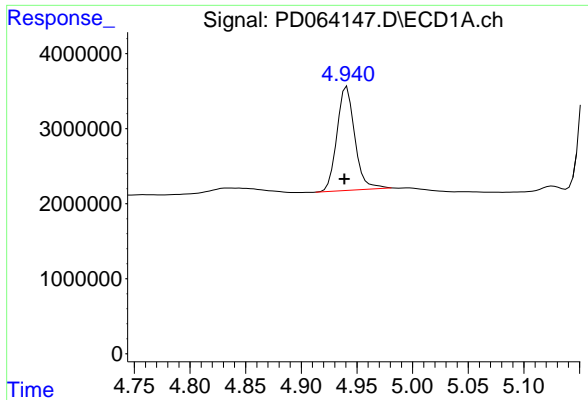
#3 gamma-BHC (Lindane)
 R.T.: 4.234 min
 Delta R.T.: -0.003 min
 Response: 7974725
 Conc: 0.80 ng/ml



#5 Aldrin
 R.T.: 5.586 min
 Delta R.T.: 0.002 min
 Response: 28287366
 Conc: 17.02 ng/ml

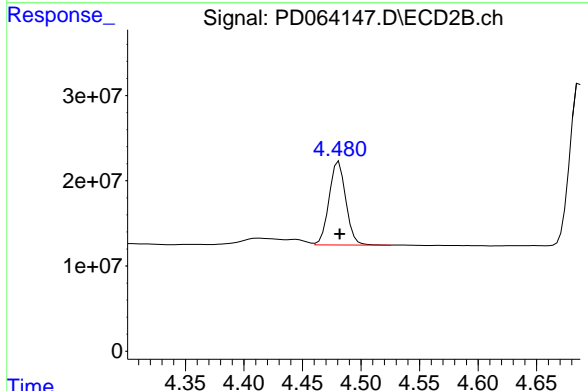


#5 Aldrin
 R.T.: 4.784 min
 Delta R.T.: -0.001 min
 Response: 187058522
 Conc: 21.56 ng/ml

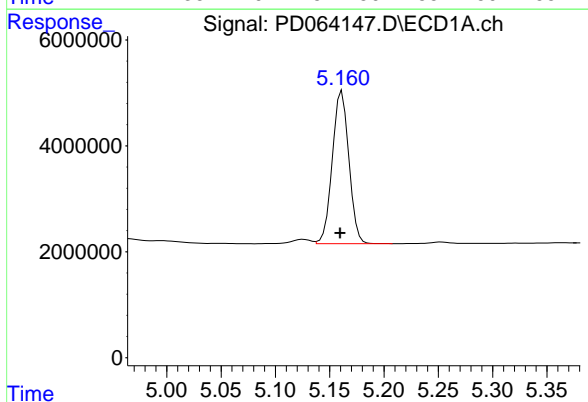


#6 beta-BHC
 R.T.: 4.941 min
 Delta R.T.: 0.002 min
 Response: 15527080
 Conc: 17.60 ng/ml

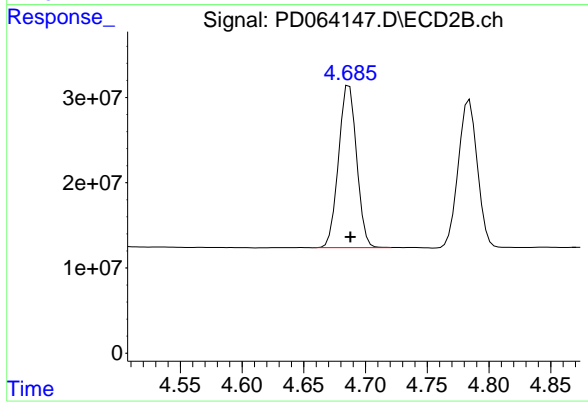
Instrument :
 ECD_D
 ClientSampled :



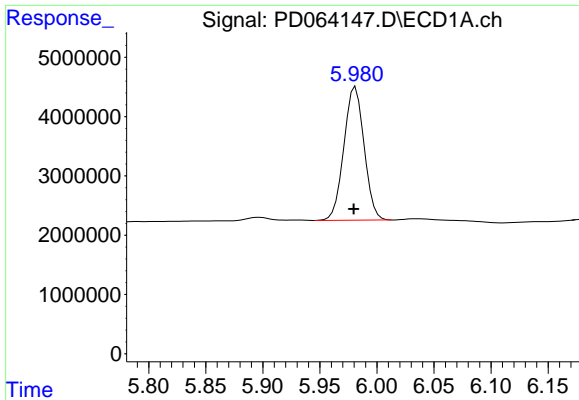
#6 beta-BHC
 R.T.: 4.481 min
 Delta R.T.: 0.000 min
 Response: 97236914
 Conc: 21.34 ng/ml



#7 delta-BHC
 R.T.: 5.161 min
 Delta R.T.: 0.002 min
 Response: 30544253
 Conc: 16.69 ng/ml

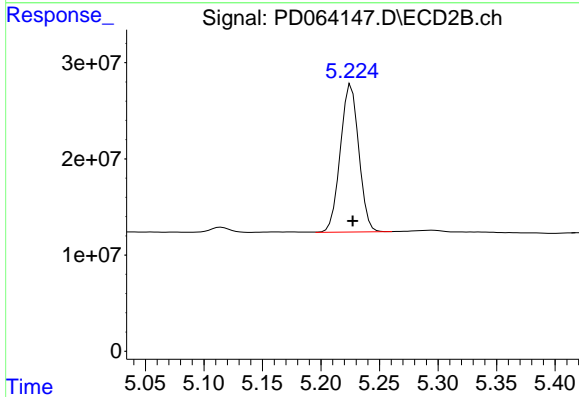


#7 delta-BHC
 R.T.: 4.687 min
 Delta R.T.: -0.001 min
 Response: 194232428
 Conc: 21.62 ng/ml

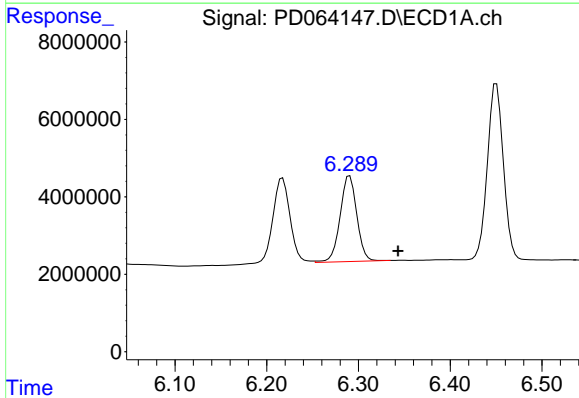


#8 Heptachlor epoxide
 R.T.: 5.981 min
 Delta R.T.: 0.002 min
 Response: 27848641
 Conc: 17.65 ng/ml

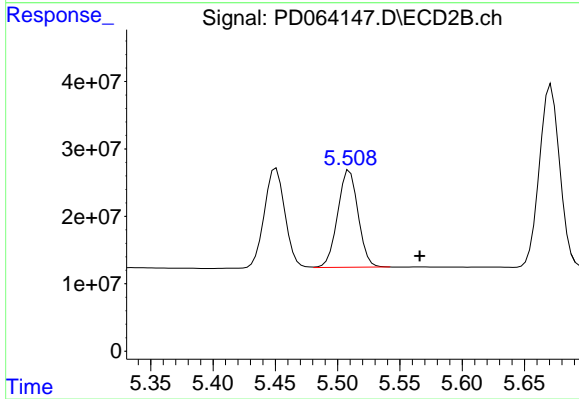
Instrument :
 ECD_D
 ClientSampled :



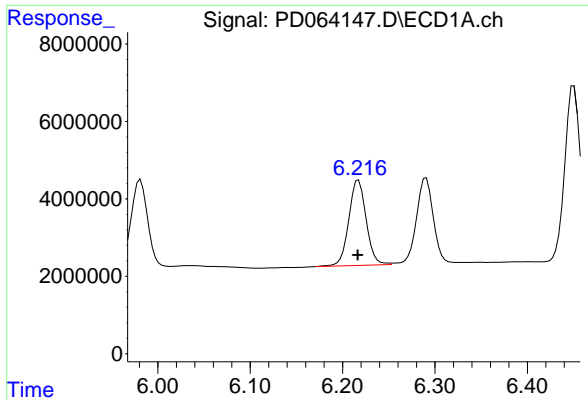
#8 Heptachlor epoxide
 R.T.: 5.226 min
 Delta R.T.: -0.001 min
 Response: 168485254
 Conc: 22.77 ng/ml



#9 Endosulfan I
 R.T.: 6.290 min
 Delta R.T.: -0.053 min
 Response: 27966944
 Conc: 19.21 ng/ml

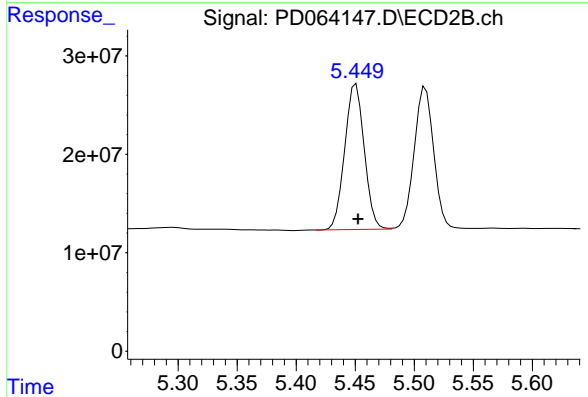


#9 Endosulfan I
 R.T.: 5.510 min
 Delta R.T.: -0.056 min
 Response: 164870494
 Conc: 21.92 ng/ml

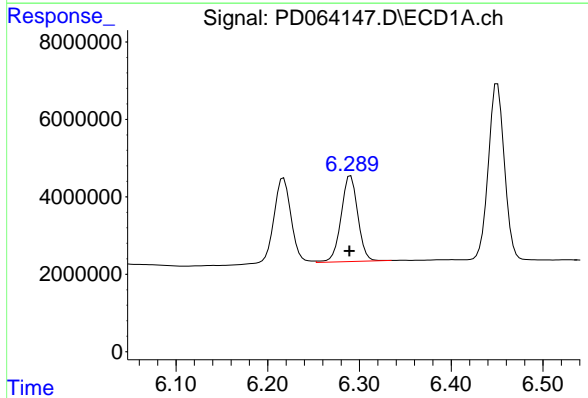


#10 trans-Chlordane
 R.T.: 6.217 min
 Delta R.T.: 0.000 min
 Response: 28828901
 Conc: 17.98 ng/ml

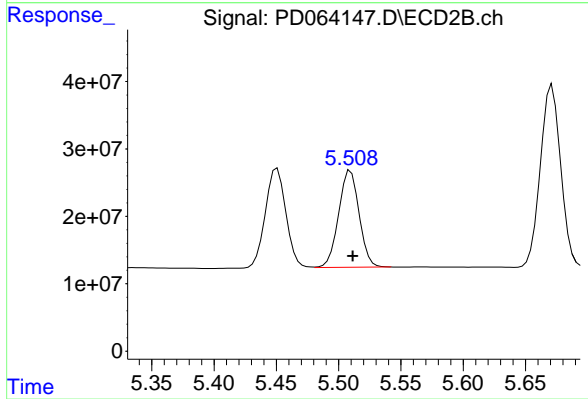
Instrument :
 ECD_D
 ClientSampleId :



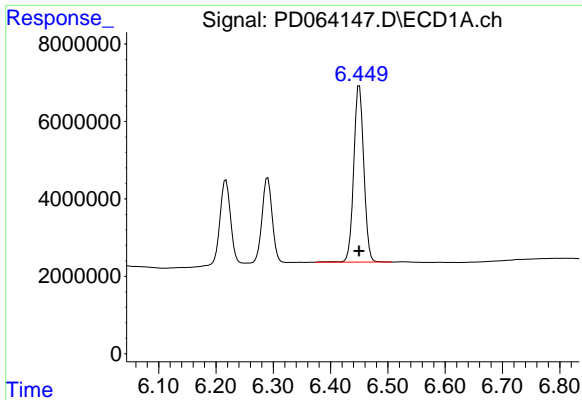
#10 trans-Chlordane
 R.T.: 5.451 min
 Delta R.T.: -0.002 min
 Response: 170165314
 Conc: 21.84 ng/ml



#11 cis-Chlordane
 R.T.: 6.290 min
 Delta R.T.: 0.001 min
 Response: 27966944
 Conc: 17.95 ng/ml



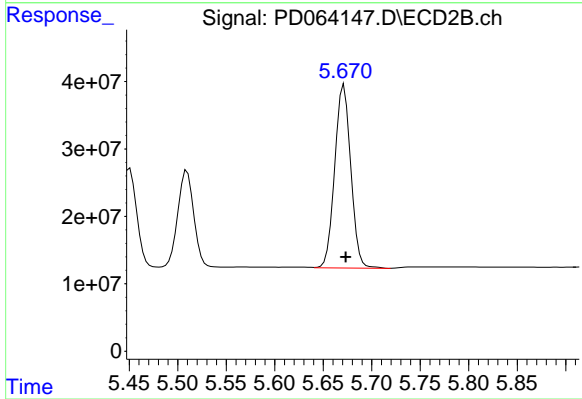
#11 cis-Chlordane
 R.T.: 5.510 min
 Delta R.T.: -0.002 min
 Response: 164870494
 Conc: 21.79 ng/ml



#12 4,4'-DDE

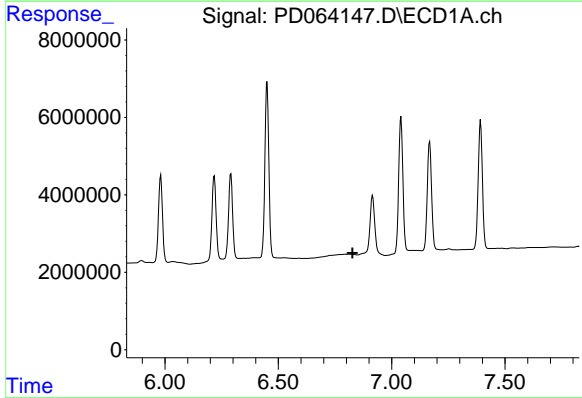
R.T.: 6.450 min
 Delta R.T.: 0.000 min
 Response: 55731517
 Conc: 35.45 ng/ml

Instrument :
 ECD_D
 ClientSampleId :



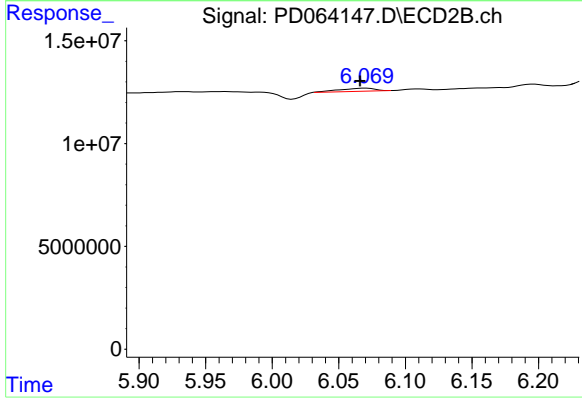
#12 4,4'-DDE

R.T.: 5.672 min
 Delta R.T.: -0.002 min
 Response: 312712827
 Conc: 43.97 ng/ml



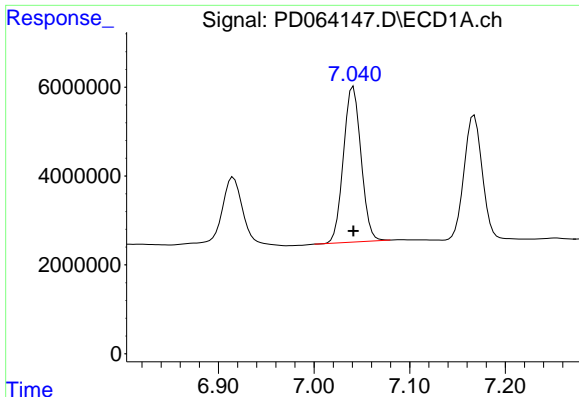
#14 Endrin

R.T.: 0.000 min
 Exp R.T. : 6.828 min
 Response: 0
 Conc: N.D.



#14 Endrin

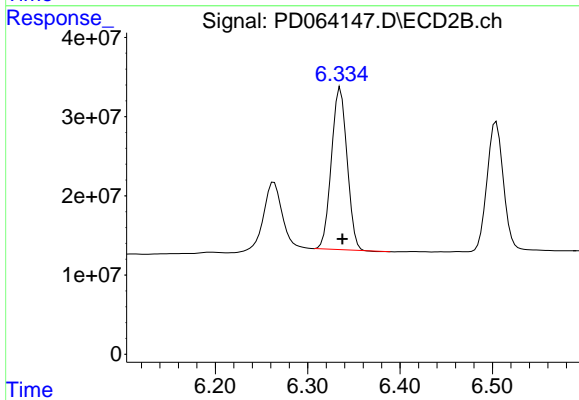
R.T.: 6.070 min
 Delta R.T.: 0.004 min
 Response: 2806573
 Conc: 0.45 ng/ml



#15 Endosulfan II

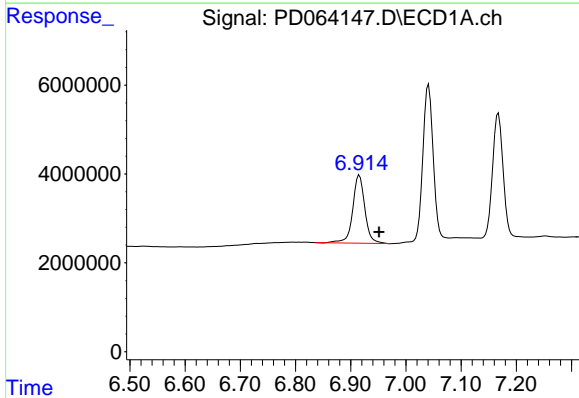
R.T.: 7.041 min
 Delta R.T.: 0.000 min
 Response: 44894337
 Conc: 34.23 ng/ml

Instrument :
 ECD_D
 ClientSampled :



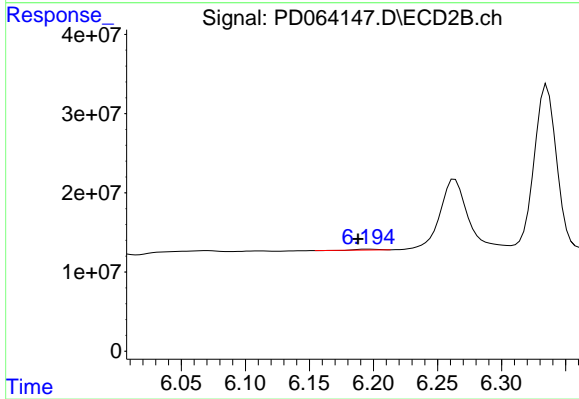
#15 Endosulfan II

R.T.: 6.335 min
 Delta R.T.: -0.002 min
 Response: 240196475
 Conc: 41.01 ng/ml



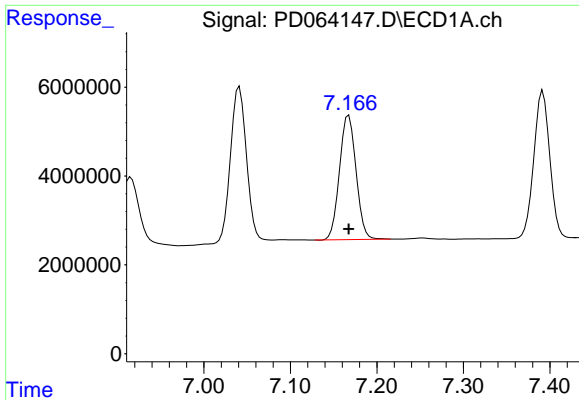
#16 4,4'-DDD

R.T.: 6.916 min
 Delta R.T.: -0.036 min
 Response: 23410176
 Conc: 17.94 ng/ml



#16 4,4'-DDD

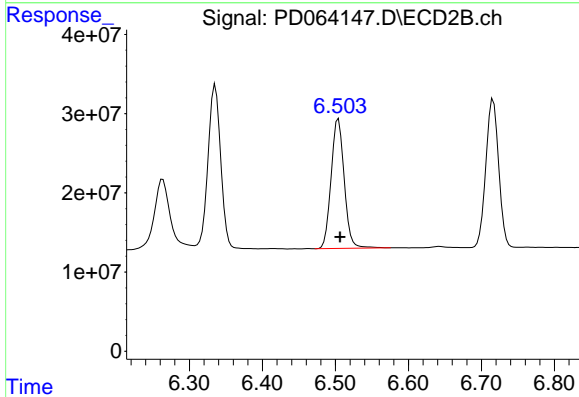
R.T.: 6.197 min
 Delta R.T.: 0.008 min
 Response: 1089771
 Conc: 0.19 ng/ml



#18 Endrin aldehyde

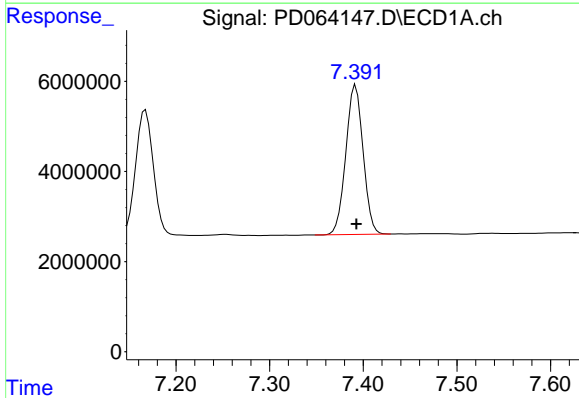
R.T.: 7.167 min
 Delta R.T.: 0.000 min
 Response: 37010819
 Conc: 35.16 ng/ml

Instrument :
 ECD_D
 ClientSampleId :



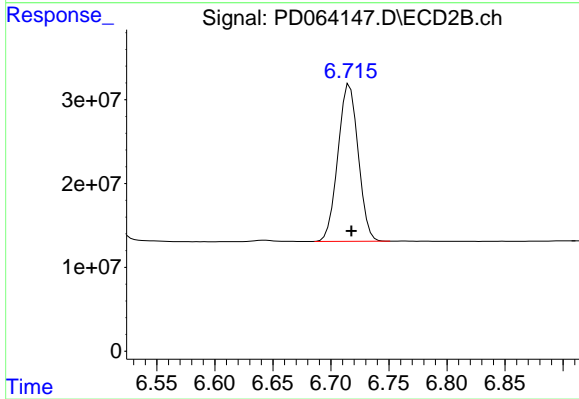
#18 Endrin aldehyde

R.T.: 6.504 min
 Delta R.T.: -0.002 min
 Response: 204260081
 Conc: 41.61 ng/ml



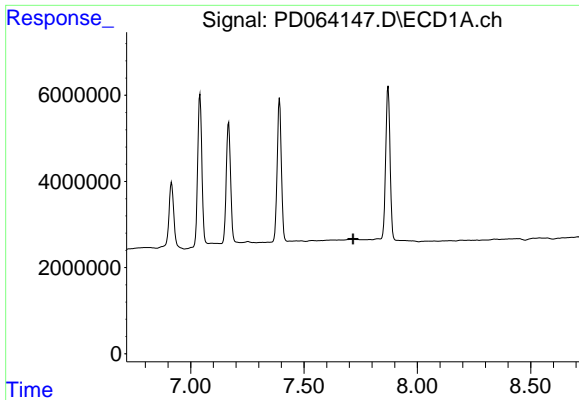
#19 Endosulfan Sulfate

R.T.: 7.392 min
 Delta R.T.: 0.000 min
 Response: 42537344
 Conc: 34.19 ng/ml



#19 Endosulfan Sulfate

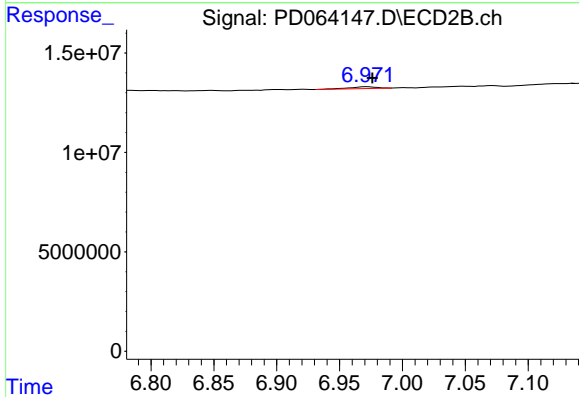
R.T.: 6.716 min
 Delta R.T.: -0.001 min
 Response: 228078324
 Conc: 45.59 ng/ml



#20 Methoxychlor

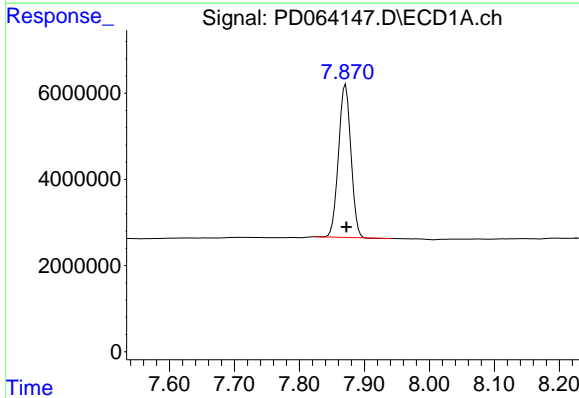
R.T.: 0.000 min
 Exp R.T.: 7.717 min
 Response: 0
 Conc: N.D.

Instrument :
 ECD_D
 ClientSampleId :



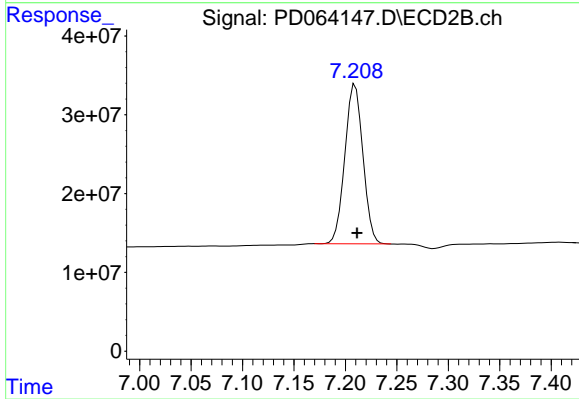
#20 Methoxychlor

R.T.: 6.973 min
 Delta R.T.: -0.004 min
 Response: 1325317
 Conc: 0.48 ng/ml



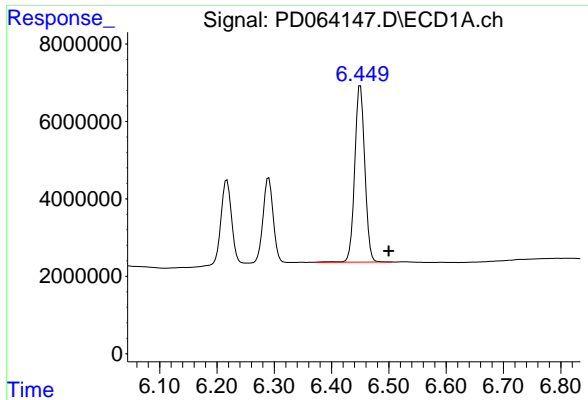
#21 Endrin ketone

R.T.: 7.871 min
 Delta R.T.: -0.001 min
 Response: 47102827
 Conc: 33.71 ng/ml



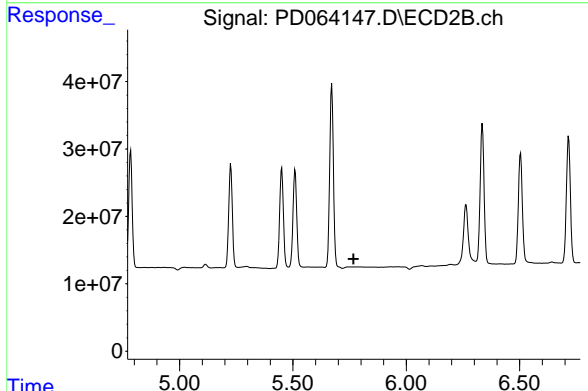
#21 Endrin ketone

R.T.: 7.210 min
 Delta R.T.: -0.002 min
 Response: 247648209
 Conc: 39.87 ng/ml

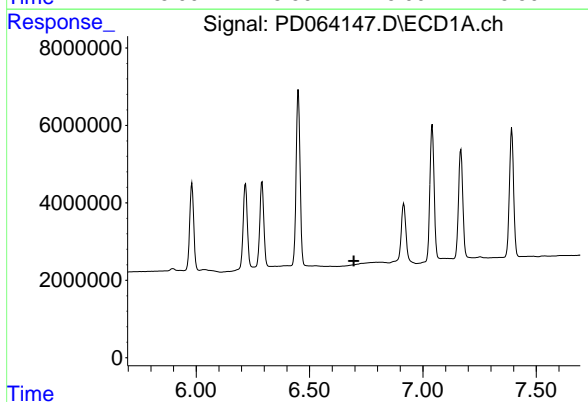


#22 Toxaphene-1
 R.T.: 6.450 min
 Delta R.T.: -0.049 min
 Response: 55731517
 Conc: 7943.49 ng/ml

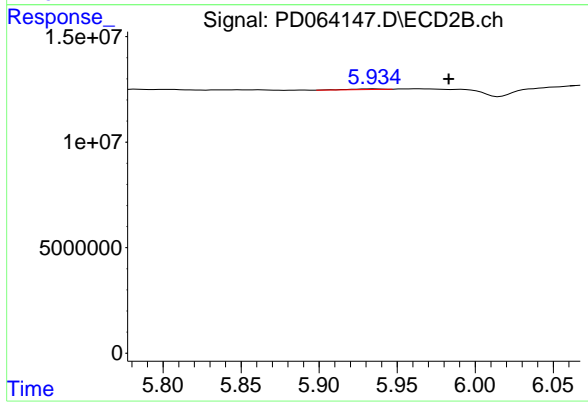
Instrument :
 ECD_D
 ClientSampled :



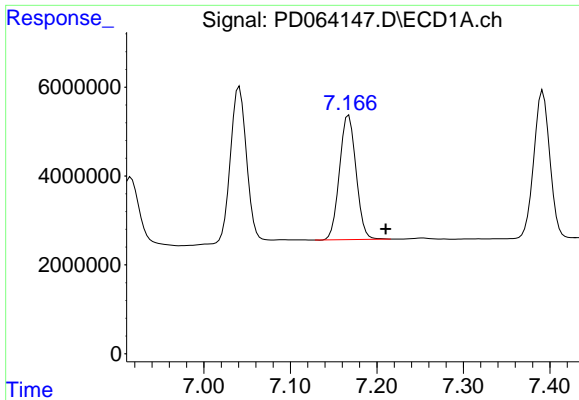
#22 Toxaphene-1
 R.T.: 0.000 min
 Exp R.T. : 5.768 min
 Response: 0
 Conc: N.D.



#23 Toxaphene-2
 R.T.: 0.000 min
 Exp R.T. : 6.695 min
 Response: 0
 Conc: N.D.

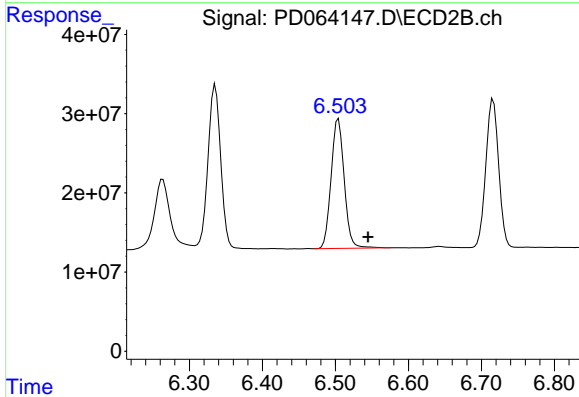


#23 Toxaphene-2
 R.T.: 5.935 min
 Delta R.T.: -0.048 min
 Response: 457115
 Conc: 9.09 ng/ml

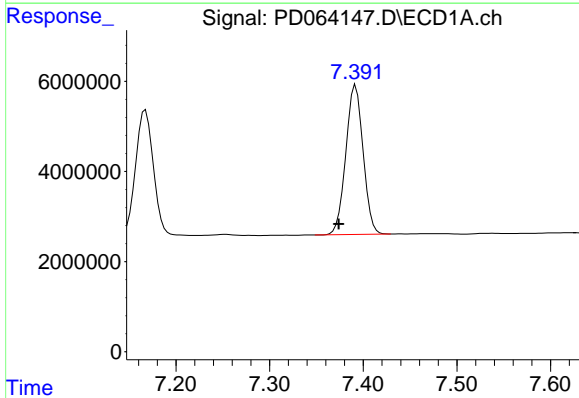


#24 Toxaphene-3
 R.T.: 7.167 min
 Delta R.T.: -0.043 min
 Response: 37010819
 Conc: 3390.70 ng/ml

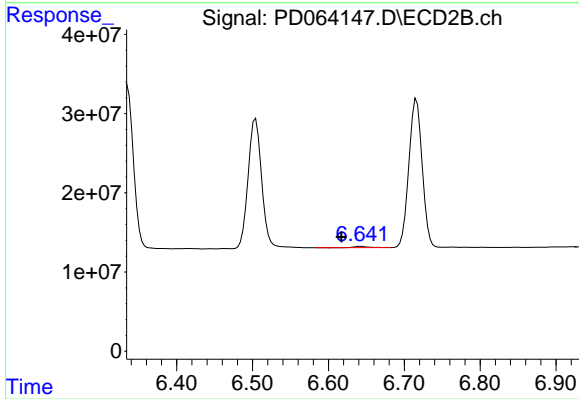
Instrument :
 ECD_D
 ClientSampled :



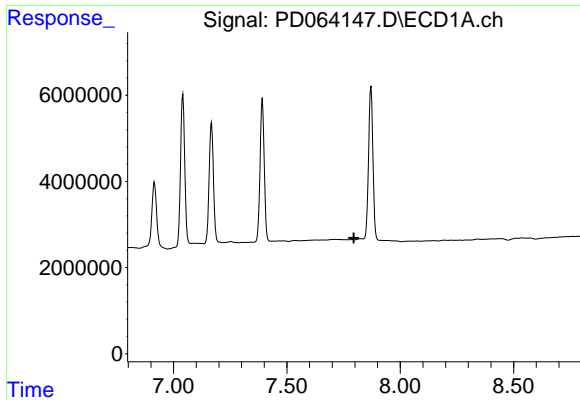
#24 Toxaphene-3
 R.T.: 6.504 min
 Delta R.T.: -0.041 min
 Response: 204260081
 Conc: 2547.47 ng/ml



#25 Toxaphene-4
 R.T.: 7.392 min
 Delta R.T.: 0.018 min
 Response: 42537344
 Conc: 1979.75 ng/ml



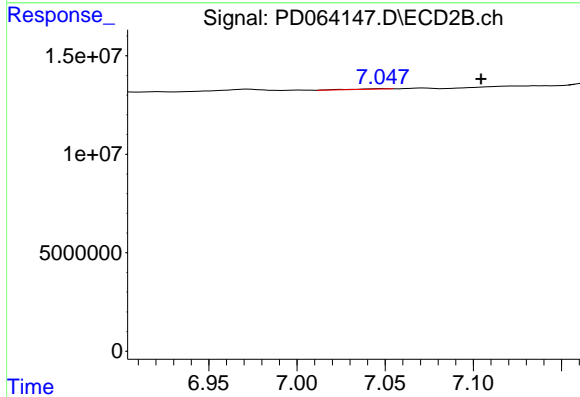
#25 Toxaphene-4
 R.T.: 6.643 min
 Delta R.T.: 0.025 min
 Response: 2103199
 Conc: 18.48 ng/ml



#26 Toxaphene-5

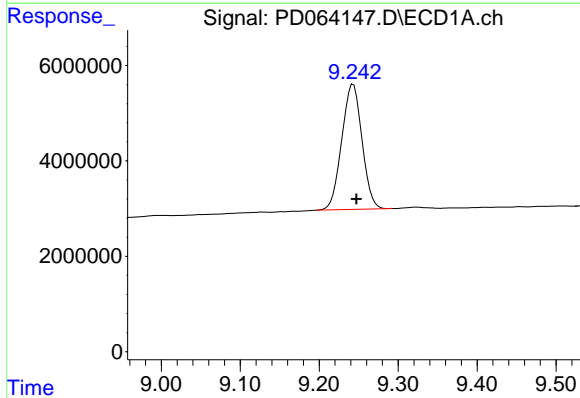
R.T.: 0.000 min
 Exp R.T.: 7.796 min
 Response: 0
 Conc: N.D.

Instrument :
 ECD_D
 ClientSampleId :



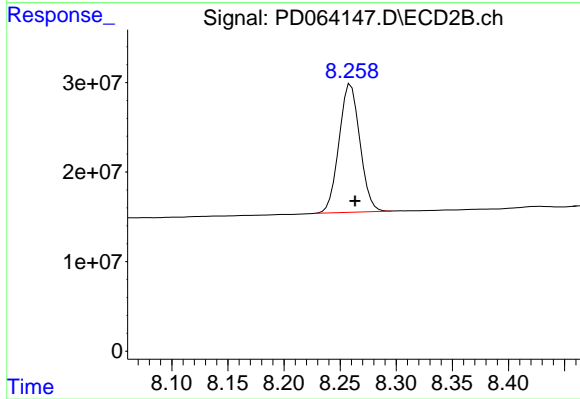
#26 Toxaphene-5

R.T.: 7.048 min
 Delta R.T.: -0.056 min
 Response: 313732
 Conc: 4.06 ng/ml



#27 Decachlorobiphenyl

R.T.: 9.243 min
 Delta R.T.: -0.004 min
 Response: 46816761
 Conc: 35.31 ng/ml



#27 Decachlorobiphenyl

R.T.: 8.259 min
 Delta R.T.: -0.004 min
 Response: 185320385
 Conc: 36.52 ng/ml