

Data Path : Z:\pestpcbsrv\HPCHEM1\ECD_D\Data\PD070721\
 Data File : PD064158.D
 Signal(s) : Signal #1: ECD1A.ch Signal #2: ECD2B.ch
 Acq On : 08 Jul 2021 02:50
 Operator : AR\AJ
 Sample : M2910-04
 Misc :
 ALS Vial : 53 Sample Multiplier: 1

Instrument :
 ECD_D
 ClientSampleId :

Integration File signal 1: autoint1.e
 Integration File signal 2: autoint2.e
 Quant Time: Jul 08 04:36:20 2021
 Quant Method : Z:\pestpcbsrv\HPCHEM1\ECD_D\Method\PD070621CLP.M
 Quant Title : GC Extractables
 QLast Update : Thu Jul 08 02:29:57 2021
 Response via : Initial Calibration
 Integrator: ChemStation

Volume Inj. : 1 µl
 Signal #1 Phase : ZB-MR2 Signal #2 Phase: ZB-MR1
 Signal #1 Info : 30M x 0.32mm x0.2 Signal #2 Info : 30M x 0.32mm x 0.50µm

	Compound	RT#1	RT#2	Resp#1	Resp#2	ng/ml	ng/ml

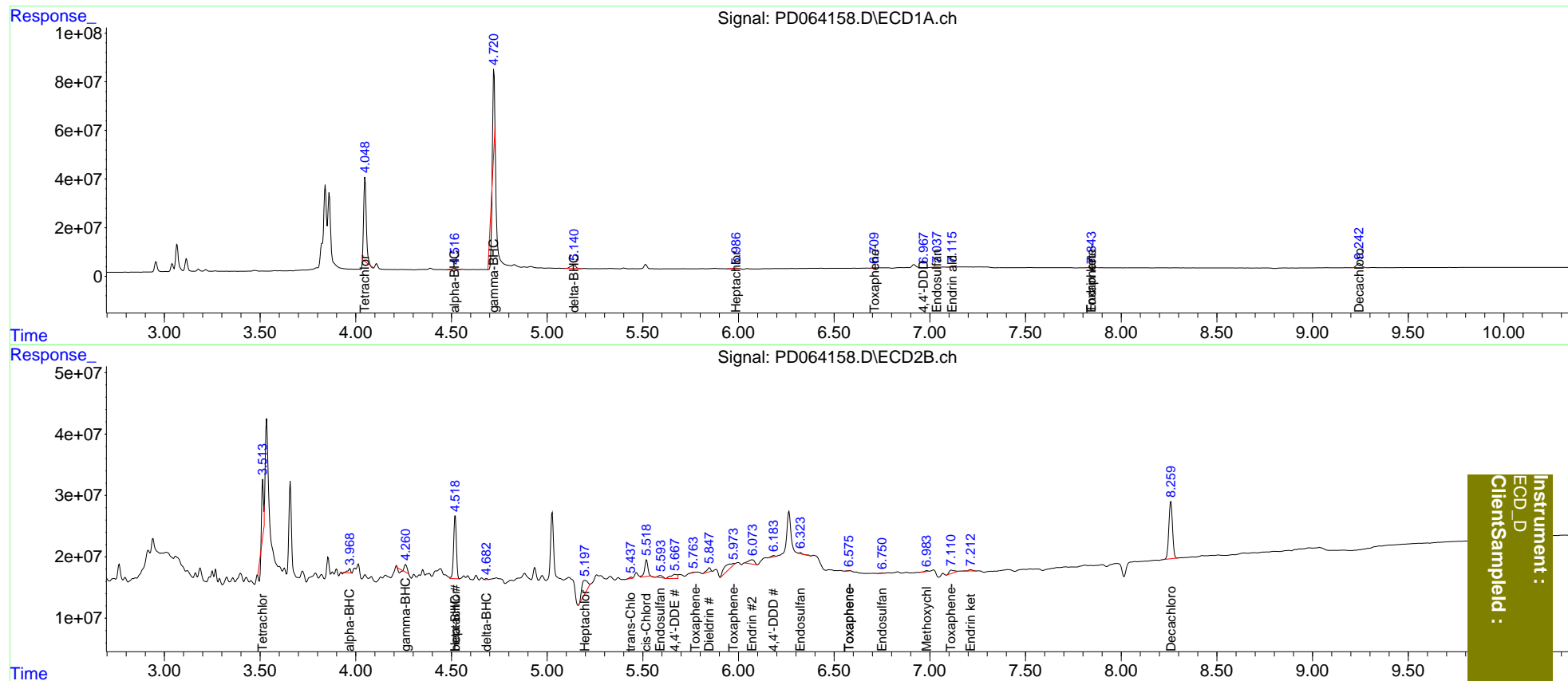
System Monitoring Compounds							
1)	SA Tetrachlo...	4.049	3.514	319.8E6	34344536	227.745	4.236 #
2)	SA Decachlor...	9.243	8.260	32680382	125.4E6	24.649	24.705
Target Compounds							
2)	A alpha-BHC	4.518f	3.969	10350377	6052096	5.284	0.563 #
3)	MA gamma-BHC...	4.723f	4.261	61667380	6503881	32.615	0.652 #
4)	MA Heptachlor	0.000	4.520	0	103.7E6	N.D.	10.957
6)	B beta-BHC	0.000	4.520f	0	103.7E6	N.D.	22.750
7)	B delta-BHC	5.141	4.683	29611405	1577848	16.184	0.176 #
8)	B Heptachlo...	5.987	5.198	2257588	44178736	1.431	5.971 #
9)	A Endosulfan I	0.000	5.591	0	5874513	N.D.	0.781
10)	B trans-Chl...	0.000	5.439	0	2383150	N.D.	0.306
11)	B cis-Chlor...	0.000	5.519	0	32351990	N.D.	4.277
12)	B 4,4'-DDE	0.000	5.668	0	15996183	N.D.	2.249
13)	MA Dieldrin	0.000	5.849f	0	9241494	N.D.	1.255
14)	MA Endrin	6.849	6.072	99813	15131861	<MDL	2.412 #
15)	B Endosulfa...	7.039	6.324	799275	2449065	0.609	0.418 #
16)	A 4,4'-DDD	6.968	6.185	769703	2707229	0.590	0.460
19)	B Endosulfa...	0.000	6.753f	0	618384	N.D.	0.124
20)	A Methoxychlor	0.000	6.984	0	1903880	N.D.	0.686
21)	B Endrin ke...	7.844	7.213	4810557	2789578	3.442	0.449 #
22)	Toxaphene-1	0.000	5.765	0	371983	N.D.	8.259
23)	Toxaphene-2	6.710	5.975	1076394	28297825	102.797	562.520 #
24)	Toxaphene-3	0.000	6.576	0	455549	N.D.	5.681
25)	Toxaphene-4	0.000	6.576	0	455549	N.D.	4.004
26)	Toxaphene-5	7.844	7.113	4810557	9717971	287.628	125.903 #

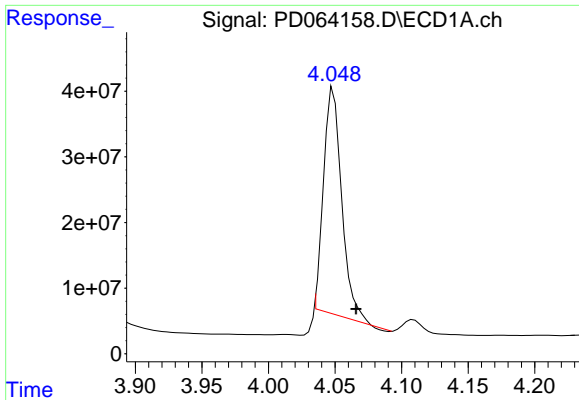
(f)=RT Delta > 1/2 Window (#)=Amounts differ by > 25% (m)=manual int.

Data Path : Z:\pestpcbsrv\HPCHEM1\ECD_D\Data\PD070721\
 Data File : PD064158.D
 Signal(s) : Signal #1: ECD1A.ch Signal #2: ECD2B.ch
 Acq On : 08 Jul 2021 02:50
 Operator : AR\AJ
 Sample : M2910-04
 Misc :
 ALS Vial : 53 Sample Multiplier: 1

Integration File signal 1: autoint1.e
 Integration File signal 2: autoint2.e
 Quant Time: Jul 08 04:36:20 2021
 Quant Method : Z:\pestpcbsrv\HPCHEM1\ECD_D\Method\PD070621CLP.M
 Quant Title : GC Extractables
 QLast Update : Thu Jul 08 02:29:57 2021
 Response via : Initial Calibration
 Integrator: ChemStation

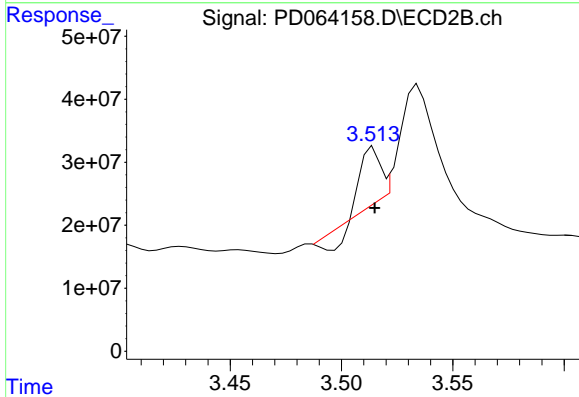
Volume Inj. : 1 µl
 Signal #1 Phase : ZB-MR2 Signal #2 Phase: ZB-MR1
 Signal #1 Info : 30M x 0.32mm x0.2 Signal #2 Info : 30M x 0.32mm x 0.50µm



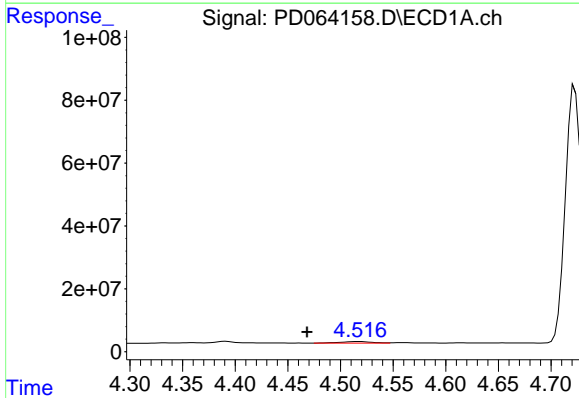


#1 Tetrachloro-m-xylene
 R.T.: 4.049 min
 Delta R.T.: -0.017 min
 Response: 319824114
 Conc: 227.75 ng/ml

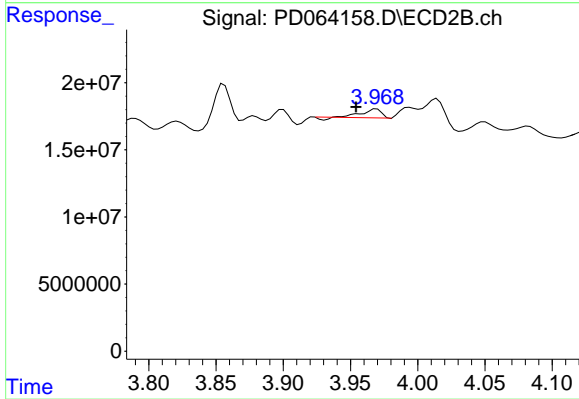
Instrument :
 ECD_D
 ClientSampled :



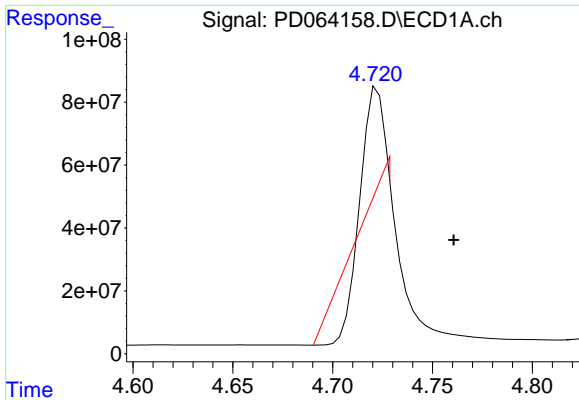
#1 Tetrachloro-m-xylene
 R.T.: 3.514 min
 Delta R.T.: 0.000 min
 Response: 34344536
 Conc: 4.24 ng/ml



#2 alpha-BHC
 R.T.: 4.518 min
 Delta R.T.: 0.049 min
 Response: 10350377
 Conc: 5.28 ng/ml

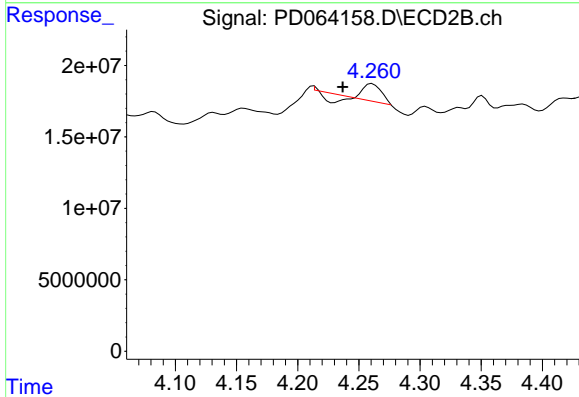


#2 alpha-BHC
 R.T.: 3.969 min
 Delta R.T.: 0.015 min
 Response: 6052096
 Conc: 0.56 ng/ml

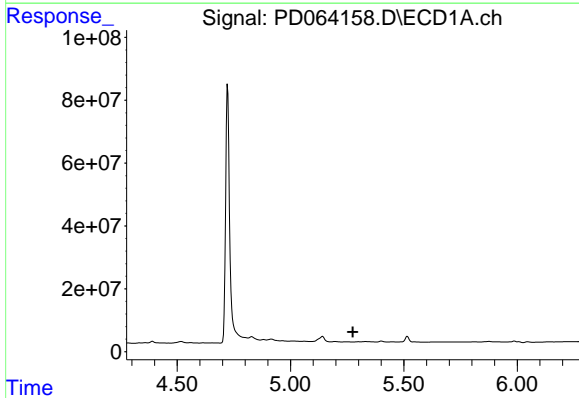


#3 gamma-BHC (Lindane)
 R.T.: 4.723 min
 Delta R.T.: -0.038 min
 Response: 61667380
 Conc: 32.61 ng/ml

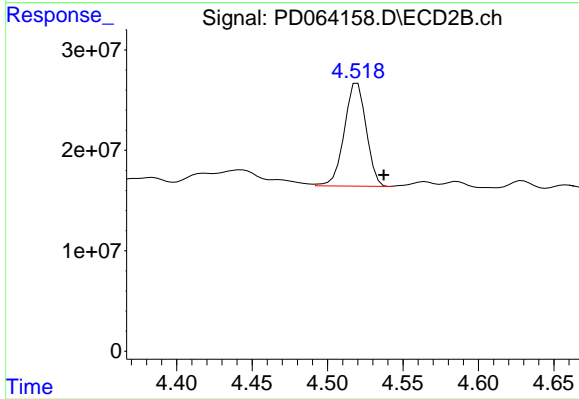
Instrument :
 ECD_D
 ClientSampled :



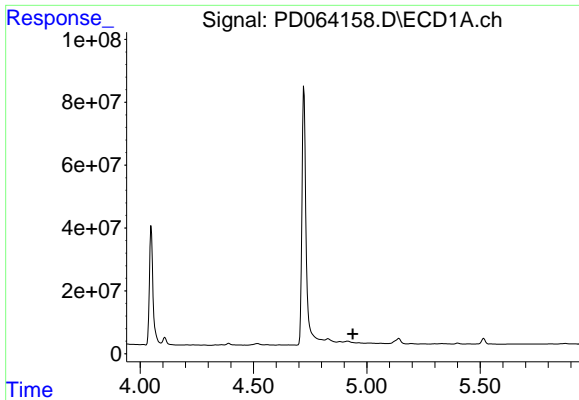
#3 gamma-BHC (Lindane)
 R.T.: 4.261 min
 Delta R.T.: 0.024 min
 Response: 6503881
 Conc: 0.65 ng/ml



#4 Heptachlor
 R.T.: 0.000 min
 Exp R.T. : 5.274 min
 Response: 0
 Conc: N.D.

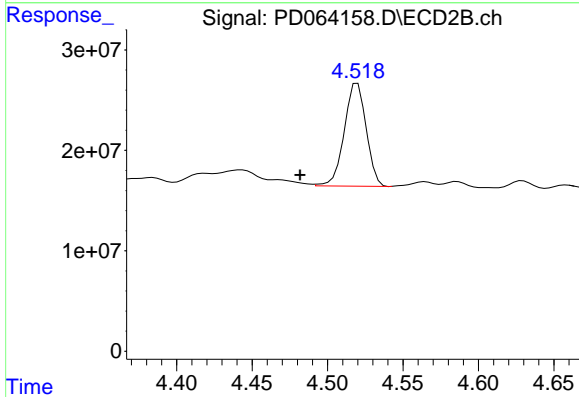


#4 Heptachlor
 R.T.: 4.520 min
 Delta R.T.: -0.017 min
 Response: 103677745
 Conc: 10.96 ng/ml

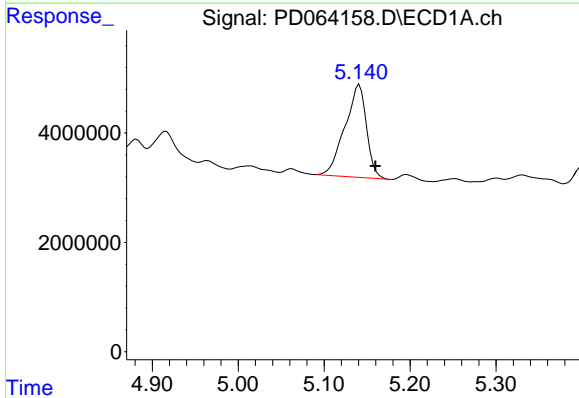


#6 beta-BHC
 R.T.: 0.000 min
 Exp R.T.: 4.939 min
 Response: 0
 Conc: N.D.

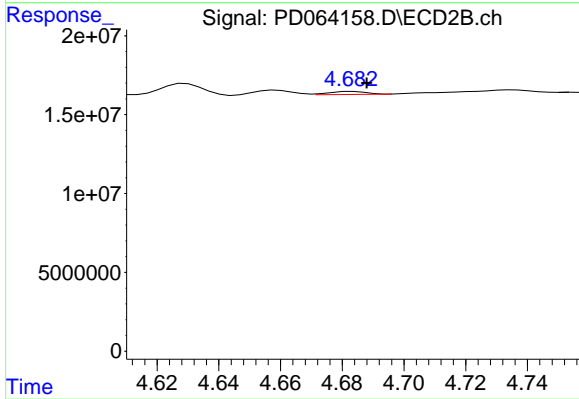
Instrument :
 ECD_D
 ClientSampleId :



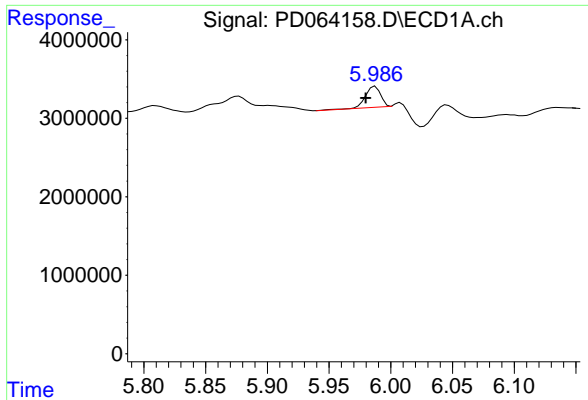
#6 beta-BHC
 R.T.: 4.520 min
 Delta R.T.: 0.038 min
 Response: 103677745
 Conc: 22.75 ng/ml



#7 delta-BHC
 R.T.: 5.141 min
 Delta R.T.: -0.018 min
 Response: 29611405
 Conc: 16.18 ng/ml

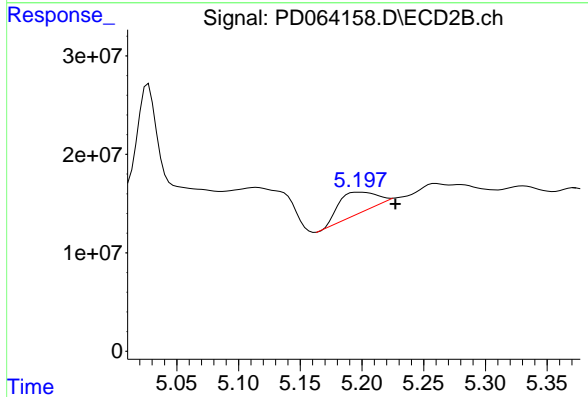


#7 delta-BHC
 R.T.: 4.683 min
 Delta R.T.: -0.005 min
 Response: 1577848
 Conc: 0.18 ng/ml

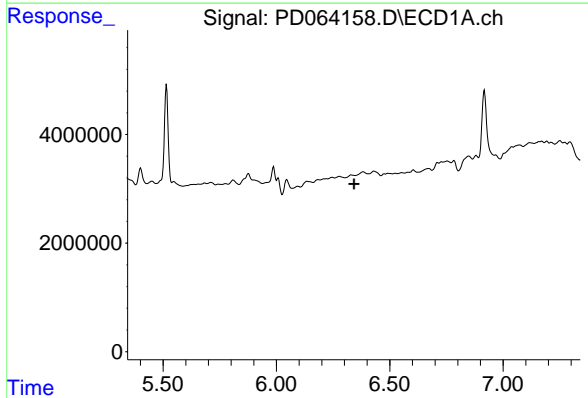


#8 Heptachlor epoxide
 R.T.: 5.987 min
 Delta R.T.: 0.008 min
 Response: 2257588
 Conc: 1.43 ng/ml

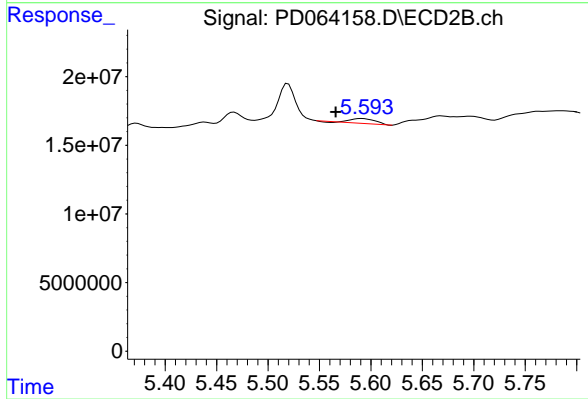
Instrument :
 ECD_D
 ClientSampled :



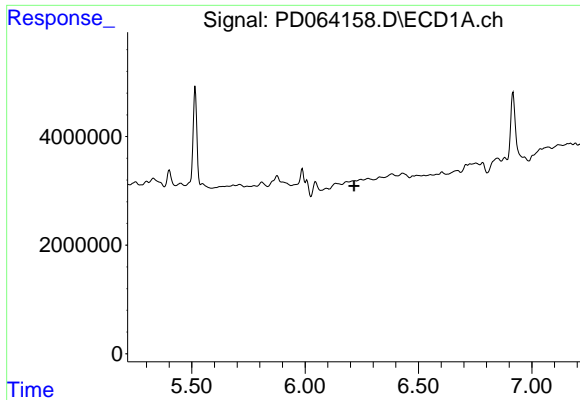
#8 Heptachlor epoxide
 R.T.: 5.198 min
 Delta R.T.: -0.029 min
 Response: 44178736
 Conc: 5.97 ng/ml



#9 Endosulfan I
 R.T.: 0.000 min
 Exp R.T. : 6.343 min
 Response: 0
 Conc: N.D.



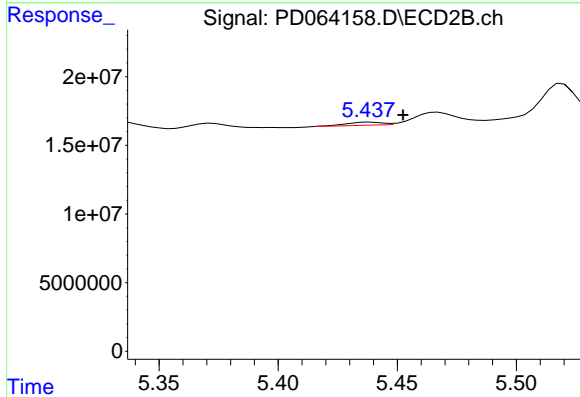
#9 Endosulfan I
 R.T.: 5.591 min
 Delta R.T.: 0.026 min
 Response: 5874513
 Conc: 0.78 ng/ml



#10 trans-Chlordane

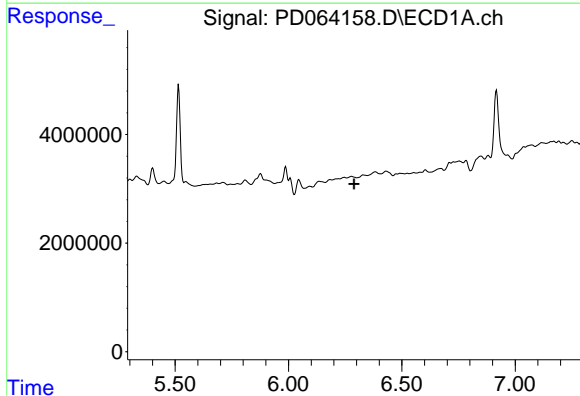
R.T.: 0.000 min
 Exp R.T. : 6.217 min
 Response: 0
 Conc: N.D.

Instrument :
 ECD_D
 ClientSampleId :



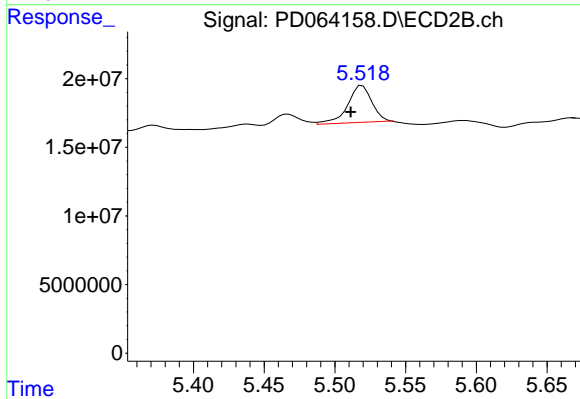
#10 trans-Chlordane

R.T.: 5.439 min
 Delta R.T.: -0.014 min
 Response: 2383150
 Conc: 0.31 ng/ml



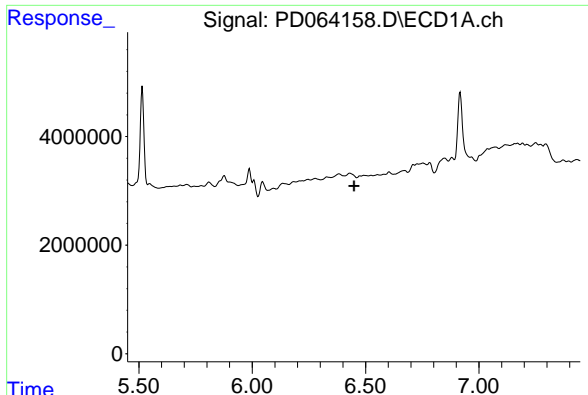
#11 cis-Chlordane

R.T.: 0.000 min
 Exp R.T. : 6.289 min
 Response: 0
 Conc: N.D.



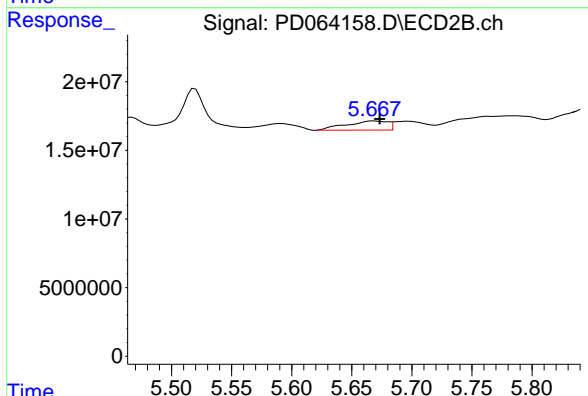
#11 cis-Chlordane

R.T.: 5.519 min
 Delta R.T.: 0.008 min
 Response: 32351990
 Conc: 4.28 ng/ml

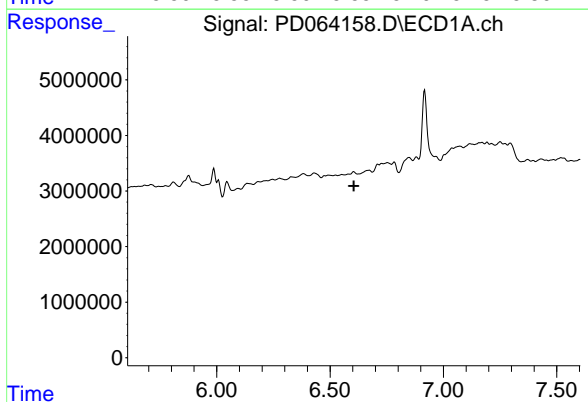


#12 4,4'-DDE
 R.T.: 0.000 min
 Exp R.T. : 6.450 min
 Response: 0
 Conc: N.D.

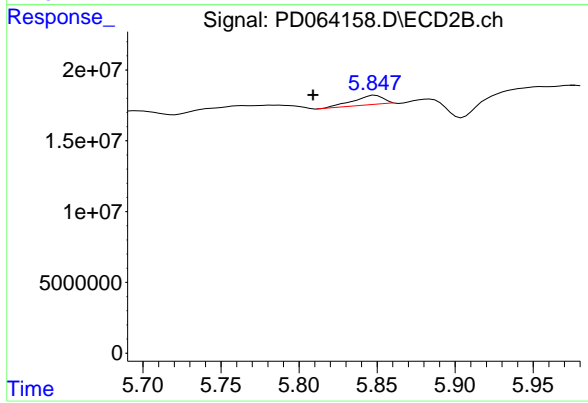
Instrument :
 ECD_D
 ClientSampled :



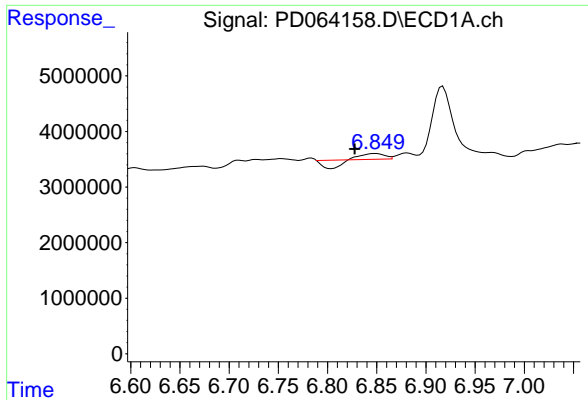
#12 4,4'-DDE
 R.T.: 5.668 min
 Delta R.T.: -0.005 min
 Response: 15996183
 Conc: 2.25 ng/ml



#13 Dieldrin
 R.T.: 0.000 min
 Exp R.T. : 6.605 min
 Response: 0
 Conc: N.D.

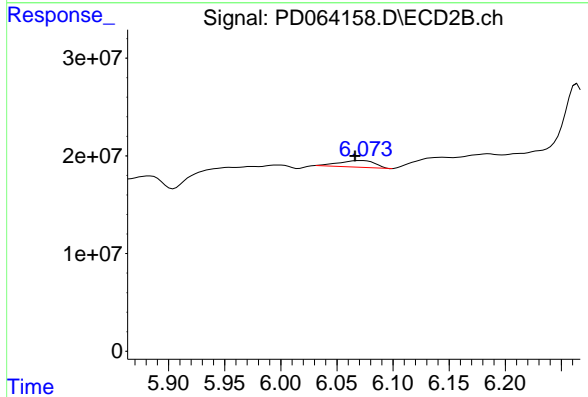


#13 Dieldrin
 R.T.: 5.849 min
 Delta R.T.: 0.040 min
 Response: 9241494
 Conc: 1.26 ng/ml

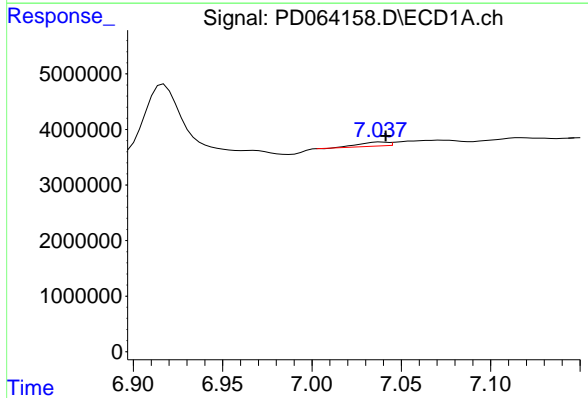


#14 Endrin
 R.T.: 6.849 min
 Delta R.T.: 0.021 min
 Response: 99813
 Conc: N.D.

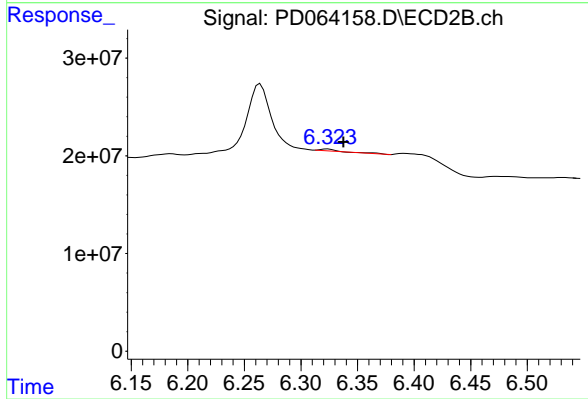
Instrument :
 ECD_D
 ClientSampleId :



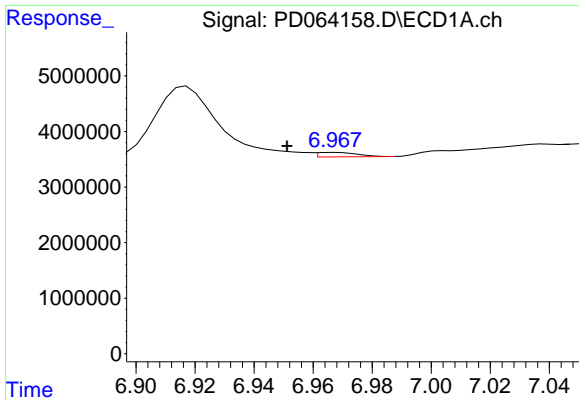
#14 Endrin
 R.T.: 6.072 min
 Delta R.T.: 0.006 min
 Response: 15131861
 Conc: 2.41 ng/ml



#15 Endosulfan II
 R.T.: 7.039 min
 Delta R.T.: -0.003 min
 Response: 799275
 Conc: 0.61 ng/ml

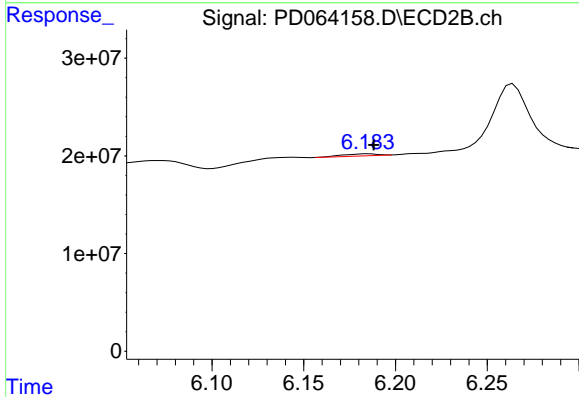


#15 Endosulfan II
 R.T.: 6.324 min
 Delta R.T.: -0.014 min
 Response: 2449065
 Conc: 0.42 ng/ml

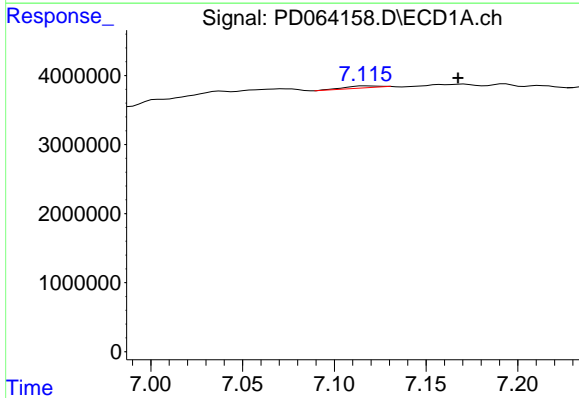


#16 4,4'-DDD
 R.T.: 6.968 min
 Delta R.T.: 0.017 min
 Response: 769703
 Conc: 0.59 ng/ml

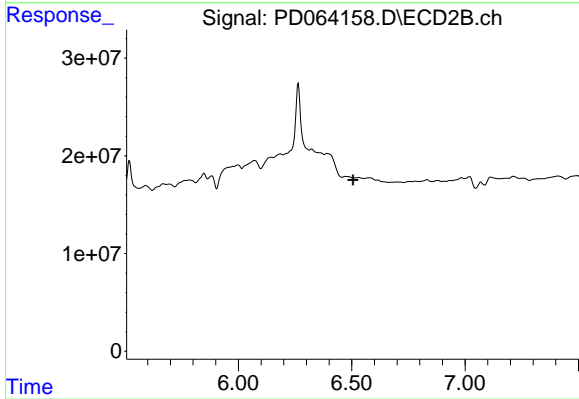
Instrument :
 ECD_D
 ClientSampleId :



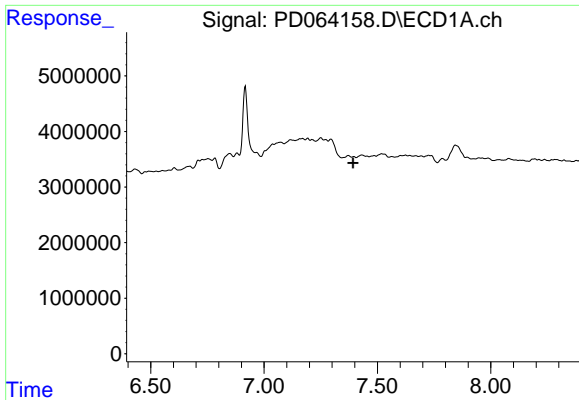
#16 4,4'-DDD
 R.T.: 6.185 min
 Delta R.T.: -0.003 min
 Response: 2707229
 Conc: 0.46 ng/ml



#18 Endrin aldehyde
 R.T.: 7.117 min
 Delta R.T.: -0.050 min
 Response: 510800
 Conc: 0.49 ng/ml

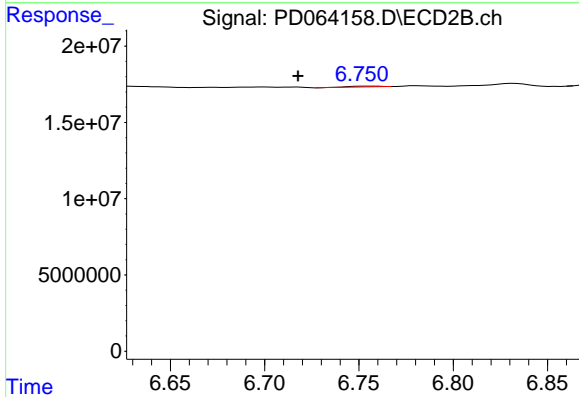


#18 Endrin aldehyde
 R.T.: 6.472 min
 Delta R.T.: -0.034 min
 Response: -10244061
 Conc: N.D.

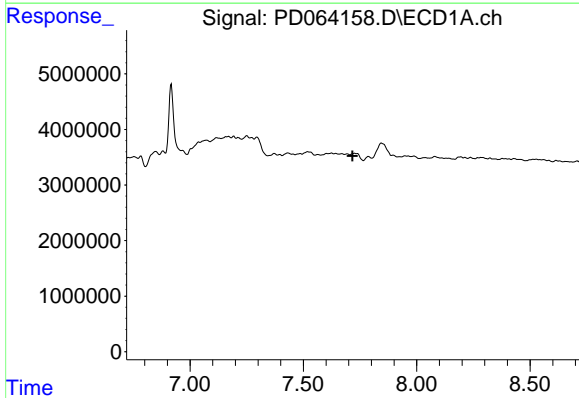


#19 Endosulfan Sulfate
 R.T.: 0.000 min
 Exp R.T.: 7.393 min
 Response: 0
 Conc: N.D.

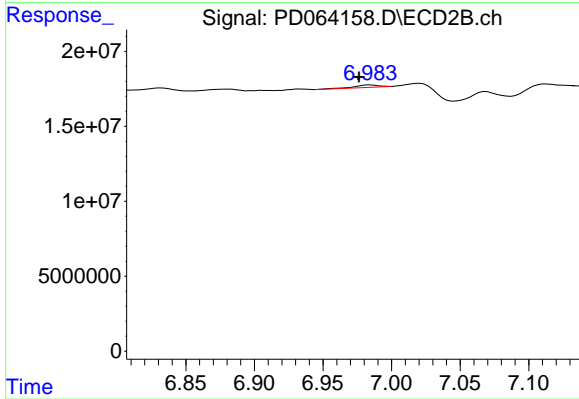
Instrument :
 ECD_D
 ClientSampleId :



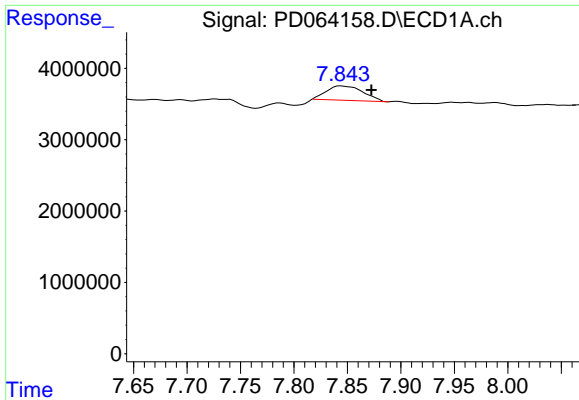
#19 Endosulfan Sulfate
 R.T.: 6.753 min
 Delta R.T.: 0.035 min
 Response: 618384
 Conc: 0.12 ng/ml



#20 Methoxychlor
 R.T.: 0.000 min
 Exp R.T.: 7.717 min
 Response: 0
 Conc: N.D.



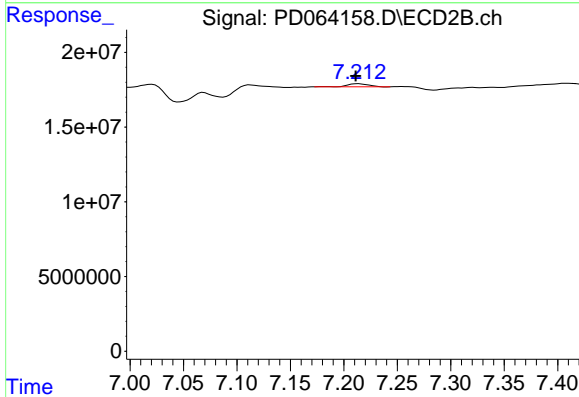
#20 Methoxychlor
 R.T.: 6.984 min
 Delta R.T.: 0.008 min
 Response: 1903880
 Conc: 0.69 ng/ml



#21 Endrin ketone

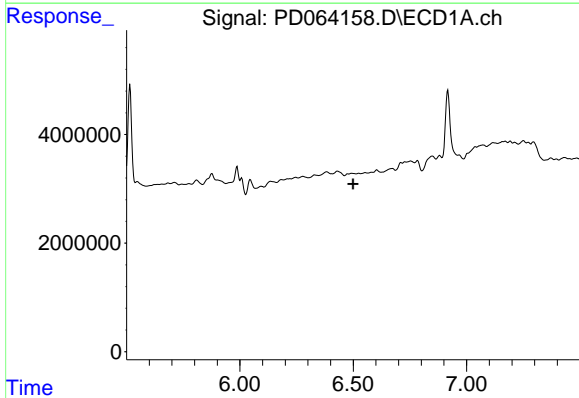
R.T.: 7.844 min
 Delta R.T.: -0.028 min
 Response: 4810557
 Conc: 3.44 ng/ml

Instrument :
 ECD_D
 ClientSampled :



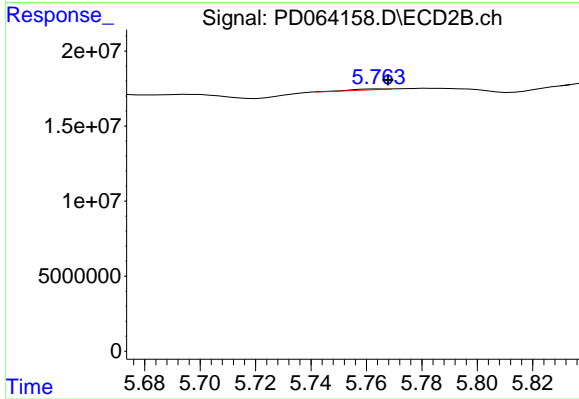
#21 Endrin ketone

R.T.: 7.213 min
 Delta R.T.: 0.002 min
 Response: 2789578
 Conc: 0.45 ng/ml



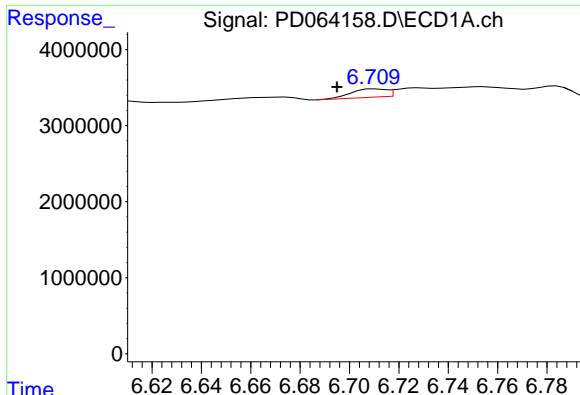
#22 Toxaphene-1

R.T.: 0.000 min
 Exp R.T. : 6.500 min
 Response: 0
 Conc: N.D.



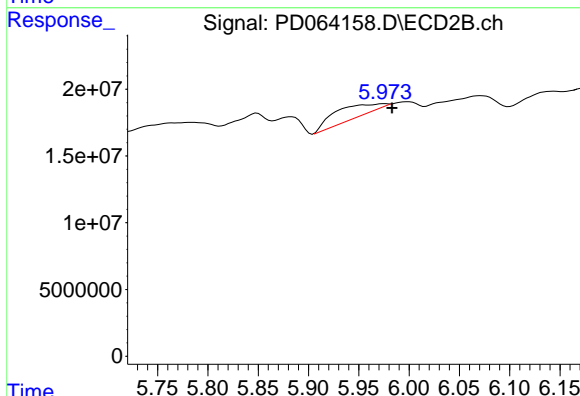
#22 Toxaphene-1

R.T.: 5.765 min
 Delta R.T.: -0.003 min
 Response: 371983
 Conc: 8.26 ng/ml

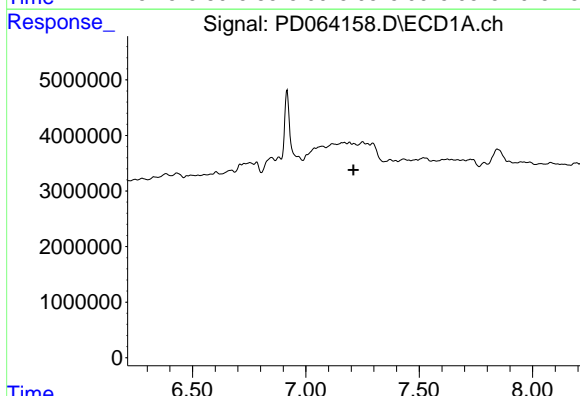


#23 Toxaphene-2
 R.T.: 6.710 min
 Delta R.T.: 0.015 min
 Response: 1076394
 Conc: 102.80 ng/ml

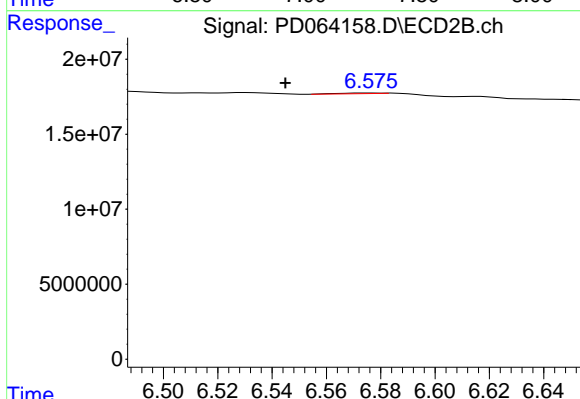
Instrument :
 ECD_D
 ClientSampleId :



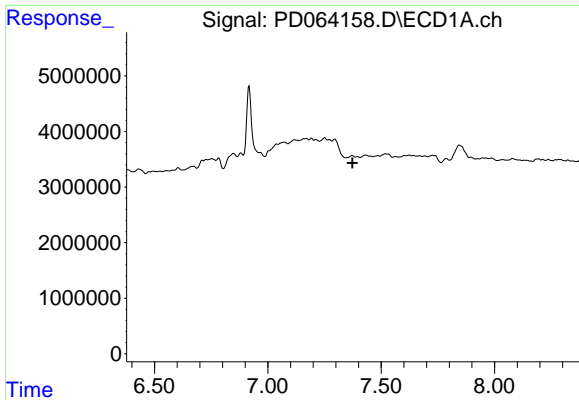
#23 Toxaphene-2
 R.T.: 5.975 min
 Delta R.T.: -0.008 min
 Response: 28297825
 Conc: 562.52 ng/ml



#24 Toxaphene-3
 R.T.: 0.000 min
 Exp R.T. : 7.210 min
 Response: 0
 Conc: N.D.



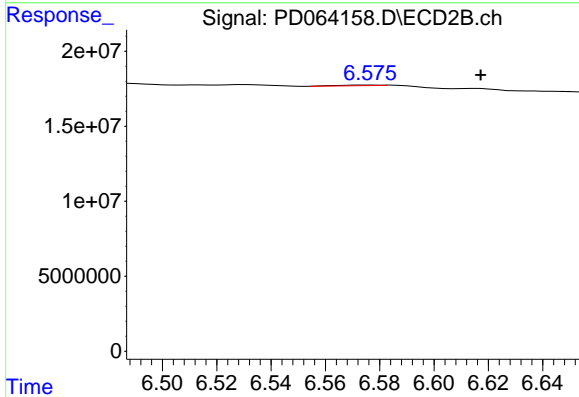
#24 Toxaphene-3
 R.T.: 6.576 min
 Delta R.T.: 0.031 min
 Response: 455549
 Conc: 5.68 ng/ml



#25 Toxaphene-4

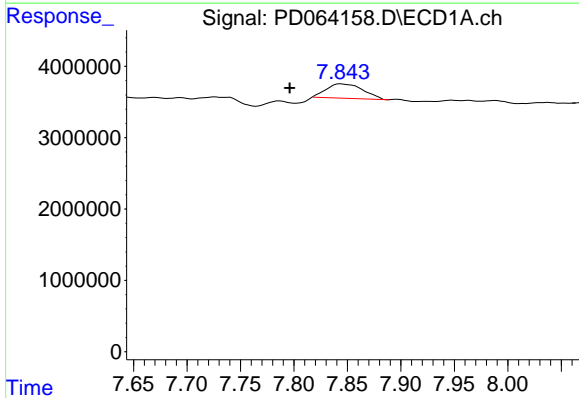
R.T.: 0.000 min
 Exp R.T.: 7.374 min
 Response: 0
 Conc: N.D.

Instrument :
 ECD_D
 ClientSampled :



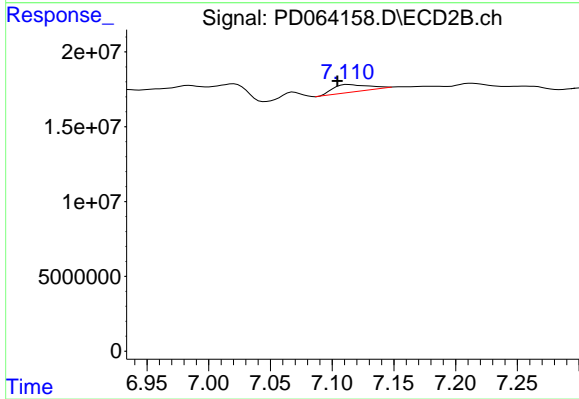
#25 Toxaphene-4

R.T.: 6.576 min
 Delta R.T.: -0.041 min
 Response: 455549
 Conc: 4.00 ng/ml



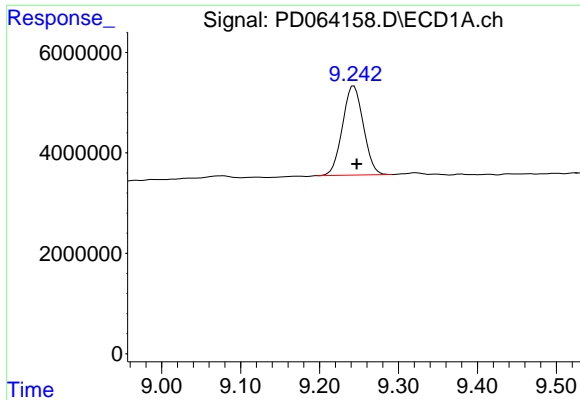
#26 Toxaphene-5

R.T.: 7.844 min
 Delta R.T.: 0.048 min
 Response: 4810557
 Conc: 287.63 ng/ml



#26 Toxaphene-5

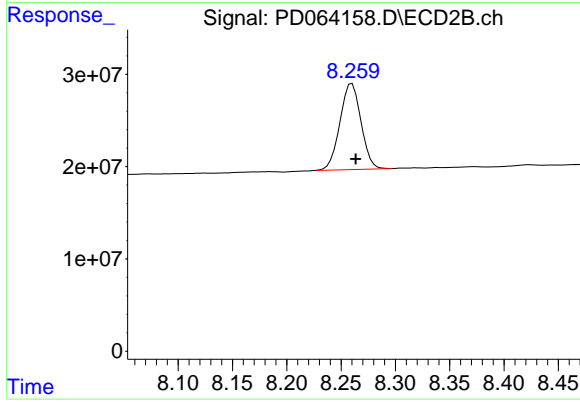
R.T.: 7.113 min
 Delta R.T.: 0.008 min
 Response: 9717971
 Conc: 125.90 ng/ml



#27 Decachlorobiphenyl

R.T.: 9.243 min
Delta R.T.: -0.004 min
Response: 32680382
Conc: 24.65 ng/ml

Instrument :
ECD_D
ClientSampleId :



#27 Decachlorobiphenyl

R.T.: 8.260 min
Delta R.T.: -0.003 min
Response: 125359641
Conc: 24.70 ng/ml