

Data Path : Z:\pestpcbsrv\HPCHEM1\ECD_D\Data\PD070722\
 Data File : PD070747.D
 Signal(s) : Signal #1: ECD1A.ch Signal #2: ECD2B.ch
 Acq On : 06 Jul 2022 15:53
 Operator : AR\AJ
 Sample : N3574-11
 Misc :
 ALS Vial : 4 Sample Multiplier: 1

Instrument :
 ECD_D
 ClientSampleId :

Integration File signal 1: autoint1.e
 Integration File signal 2: autoint2.e
 Quant Time: Jul 07 02:36:07 2022
 Quant Method : Z:\pestpcbsrv\HPCHEM1\ECD_D\Method\PD070122CLP.M
 Quant Title : GC Extractables
 QLast Update : Fri Jul 01 11:10:28 2022
 Response via : Initial Calibration
 Integrator: ChemStation

Volume Inj. : 1 µl
 Signal #1 Phase : ZB-MR2 Signal #2 Phase: ZB-MR1
 Signal #1 Info : 30M x 0.32mm x0.2 Signal #2 Info : 30M x 0.32mm x 0.50µm

Compound	RT#1	RT#2	Resp#1	Resp#2	ng/ml	ng/ml

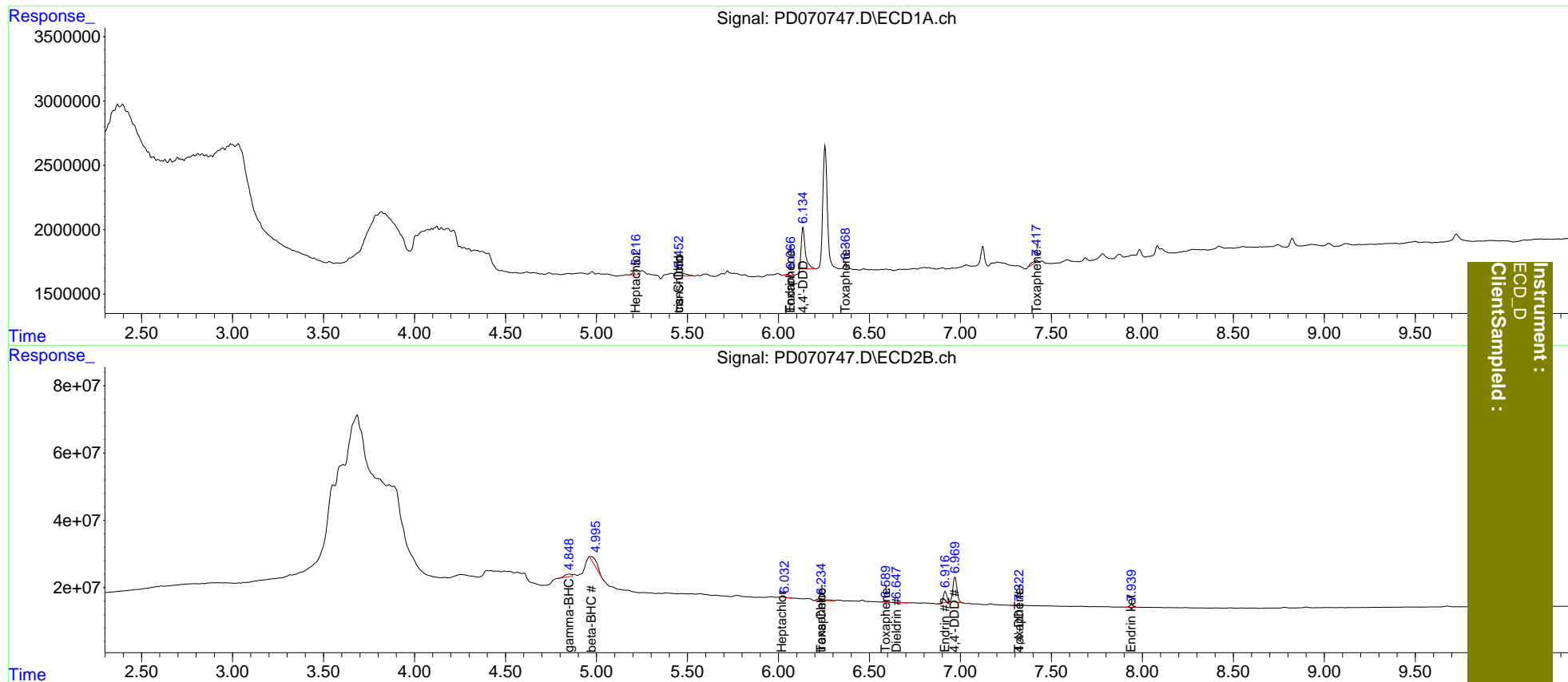
System Monitoring Compounds						
1) SA Tetrachlo...	0.000	4.168f	0	837158	N.D.	<MDL
2) SA Decachlor...	8.280	9.304	168823	265577	<MDL	<MDL #
Target Compounds						
2) A alpha-BHC	0.000	4.521	0	2186792	N.D.	<MDL
3) MA gamma-BHC...	0.000	4.851f	0	19990710	N.D.	0.601
5) MB Aldrin	0.000	5.659	0	879237	N.D.	<MDL
6) B beta-BHC	0.000	4.974f	0	41990868	N.D.	2.683
7) B delta-BHC	0.000	5.260f	0	419665	N.D.	<MDL
8) B Heptachlo...	5.218	6.021	809344	2876919	0.269	0.122 #
9) A Endosulfan I	5.557	6.375	43484	1353373	<MDL	<MDL #
10) B trans-Chl...	5.453	6.236f	1072930	20799388	0.341	0.908 #
11) B cis-Chlor...	5.453f	6.375	1072930	1353373	0.349	<MDL #
12) B 4,4'-DDE	5.691	6.461f	-91279	967513	N.D.	<MDL
13) MA Dieldrin	0.000	6.648	0	2466357	N.D.	0.125
14) MA Endrin	6.068	6.917	306336	38868423	0.118	2.752 #
15) B Endosulfa...	6.370f	7.088	153108	1163651	<MDL	<MDL #
16) A 4,4'-DDD	6.135f	6.970f	4952656	115.7E6	1.978	7.680 #
17) MA 4,4'-DDT	6.370f	7.323	153108	2001447	<MDL	0.153 #
18) B Endrin al...	0.000	7.236	0	22502	N.D.	<MDL
20) A Methoxychlor	7.034f	7.790	129828	100866	<MDL	<MDL #
21) B Endrin ke...	0.000	7.940	0	9992530	N.D.	0.845
22) Toxaphene-1	5.691f	6.236	-91279	20799388	N.D.	284.792
23) Toxaphene-2	6.068	6.590	306336	3288589	20.125	21.013
24) Toxaphene-3	6.370	7.323	153108	2001447	8.808	5.766 #
26) Toxaphene-5	7.418	7.856	482749	-145635	12.697	N.D. #

(f)=RT Delta > 1/2 Window (#)=Amounts differ by > 25% (m)=manual int.

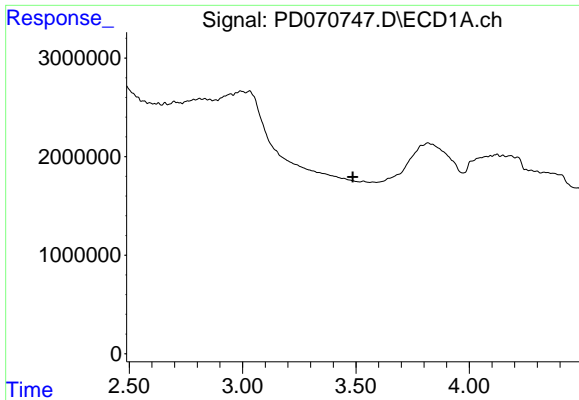
Data Path : Z:\pestpcbsrv\HPCHEM1\ECD_D\Data\PD070722\
 Data File : PD070747.D
 Signal(s) : Signal #1: ECD1A.ch Signal #2: ECD2B.ch
 Acq On : 06 Jul 2022 15:53
 Operator : AR\AJ
 Sample : N3574-11
 Misc :
 ALS Vial : 4 Sample Multiplier: 1

Integration File signal 1: autoint1.e
 Integration File signal 2: autoint2.e
 Quant Time: Jul 07 02:36:07 2022
 Quant Method : Z:\pestpcbsrv\HPCHEM1\ECD_D\Method\PD070122CLP.M
 Quant Title : GC Extractables
 QLast Update : Fri Jul 01 11:10:28 2022
 Response via : Initial Calibration
 Integrator: ChemStation

Volume Inj. : 1 µl
 Signal #1 Phase : ZB-MR2 Signal #2 Phase: ZB-MR1
 Signal #1 Info : 30M x 0.32mm x0.2 Signal #2 Info : 30M x 0.32mm x 0.50µm



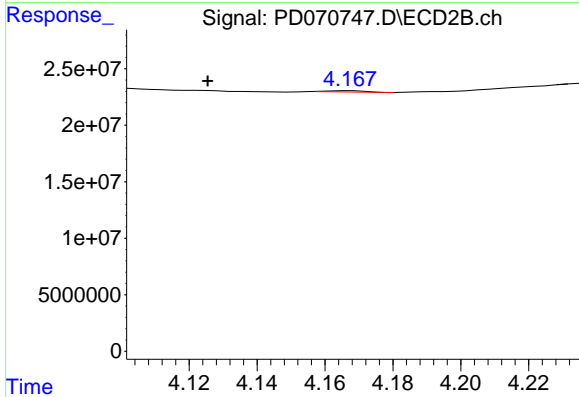
Instrument : ECD_D
 ClientSampled :



#1 Tetrachloro-m-xylene

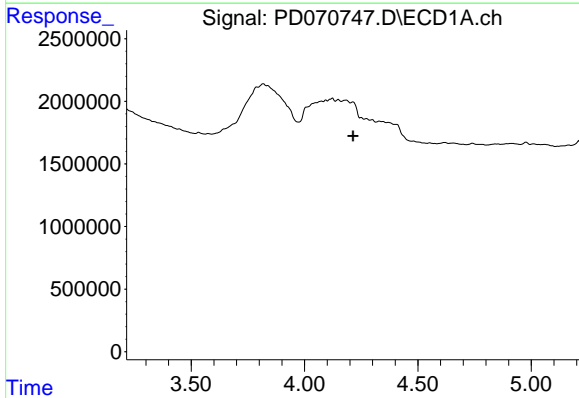
R.T.: 0.000 min
 Exp R.T.: 3.486 min
 Response: 0
 Conc: N.D.

Instrument :
 ECD_D
 ClientSampleId :



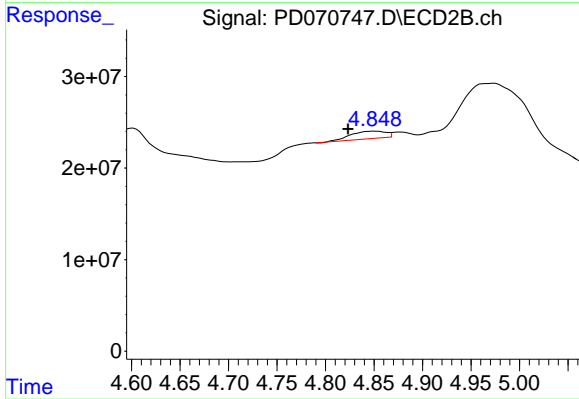
#1 Tetrachloro-m-xylene

R.T.: 4.168 min
 Delta R.T.: 0.042 min
 Response: 837158
 Conc: N.D.



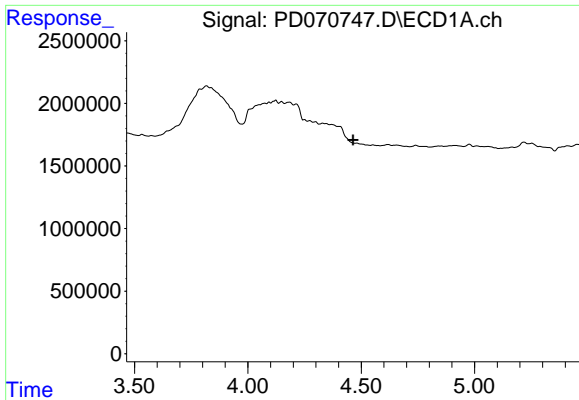
#3 gamma-BHC (Lindane)

R.T.: 0.000 min
 Exp R.T.: 4.214 min
 Response: 0
 Conc: N.D.



#3 gamma-BHC (Lindane)

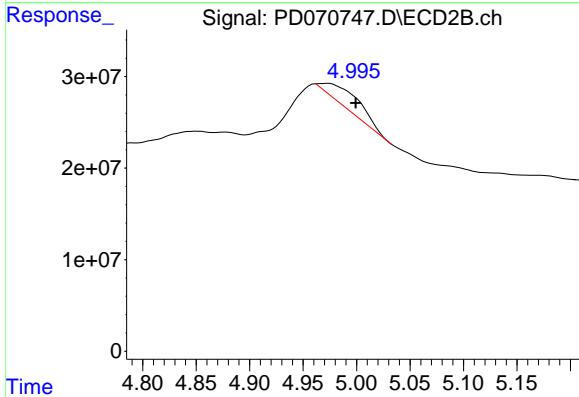
R.T.: 4.851 min
 Delta R.T.: 0.028 min
 Response: 19990710
 Conc: 0.60 ng/ml



#6 beta-BHC

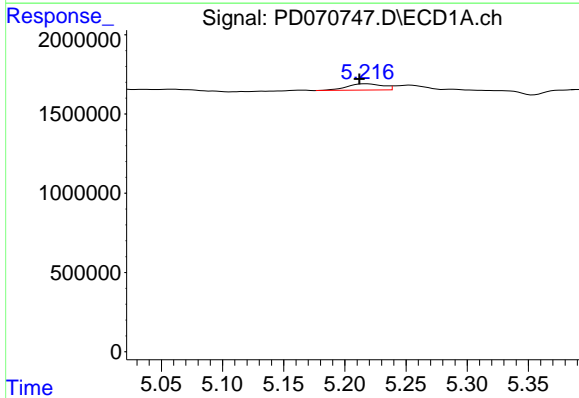
R.T.: 0.000 min
 Exp R.T.: 4.464 min
 Response: 0
 Conc: N.D.

Instrument :
 ECD_D
 ClientSampleId :



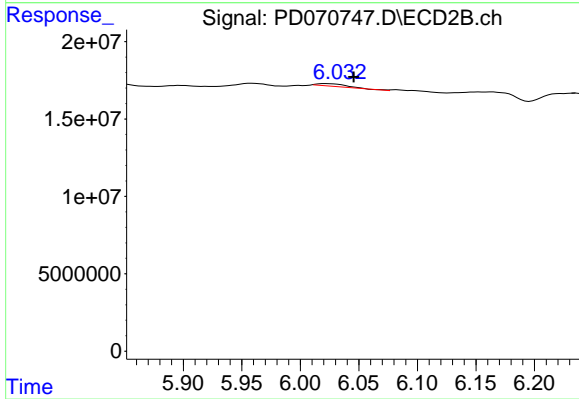
#6 beta-BHC

R.T.: 4.974 min
 Delta R.T.: -0.025 min
 Response: 41990868
 Conc: 2.68 ng/ml



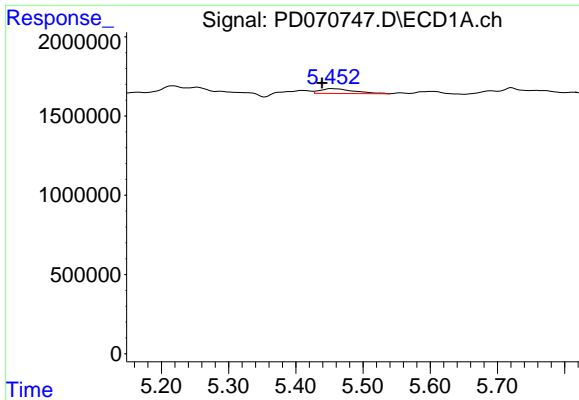
#8 Heptachlor epoxide

R.T.: 5.218 min
 Delta R.T.: 0.006 min
 Response: 809344
 Conc: 0.27 ng/ml



#8 Heptachlor epoxide

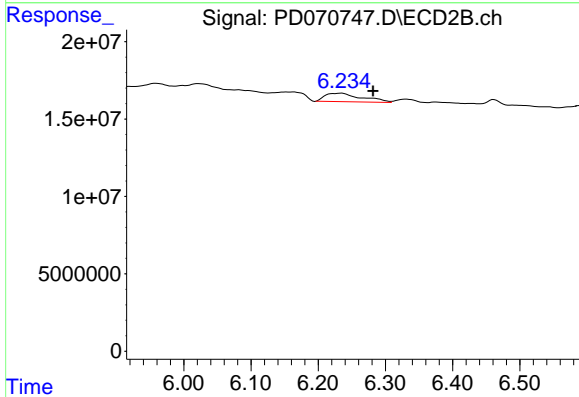
R.T.: 6.021 min
 Delta R.T.: -0.025 min
 Response: 2876919
 Conc: 0.12 ng/ml



#10 trans-Chlordane

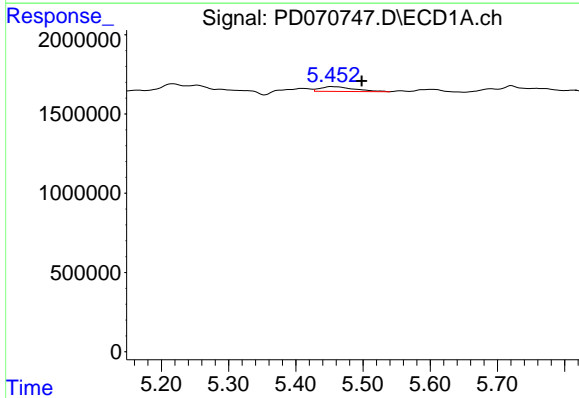
R.T.: 5.453 min
 Delta R.T.: 0.014 min
 Response: 1072930
 Conc: 0.34 ng/ml

Instrument :
 ECD_D
 ClientSampleId :



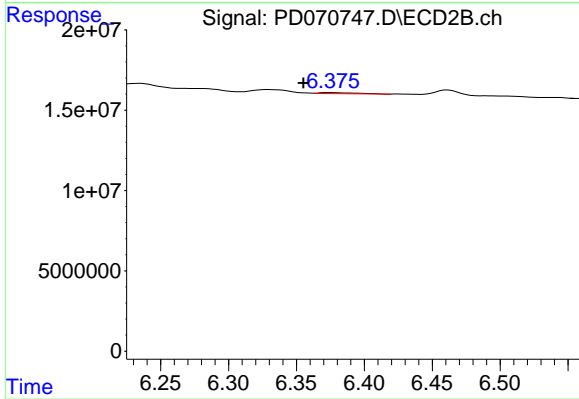
#10 trans-Chlordane

R.T.: 6.236 min
 Delta R.T.: -0.046 min
 Response: 20799388
 Conc: 0.91 ng/ml



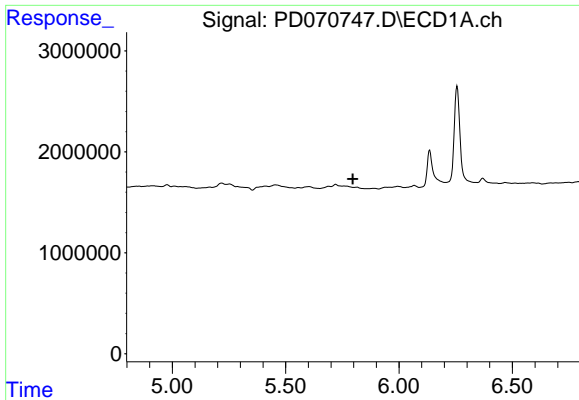
#11 cis-Chlordane

R.T.: 5.453 min
 Delta R.T.: -0.045 min
 Response: 1072930
 Conc: 0.35 ng/ml



#11 cis-Chlordane

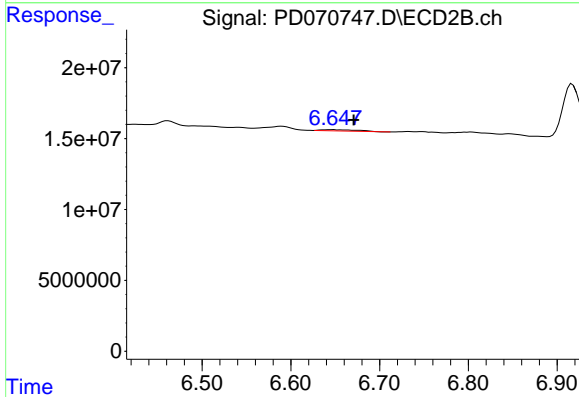
R.T.: 6.375 min
 Delta R.T.: 0.020 min
 Response: 1353373
 Conc: N.D.



#13 Dieldrin

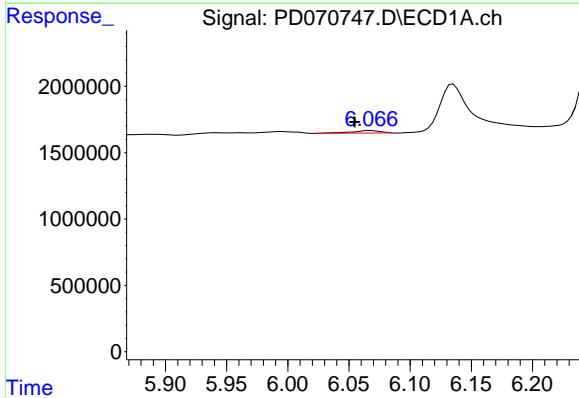
R.T.: 0.000 min
 Exp R.T.: 5.797 min
 Response: 0
 Conc: N.D.

Instrument :
 ECD_D
 ClientSampleId :



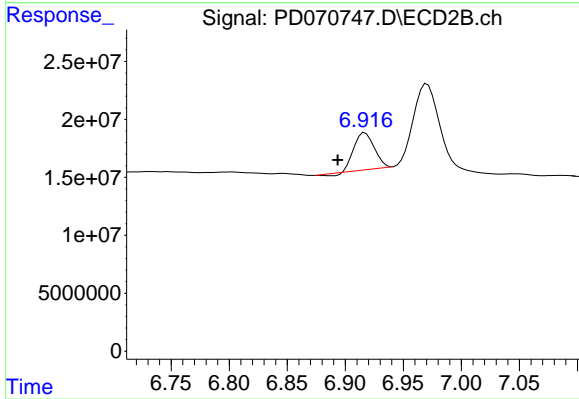
#13 Dieldrin

R.T.: 6.648 min
 Delta R.T.: -0.023 min
 Response: 2466357
 Conc: 0.13 ng/ml



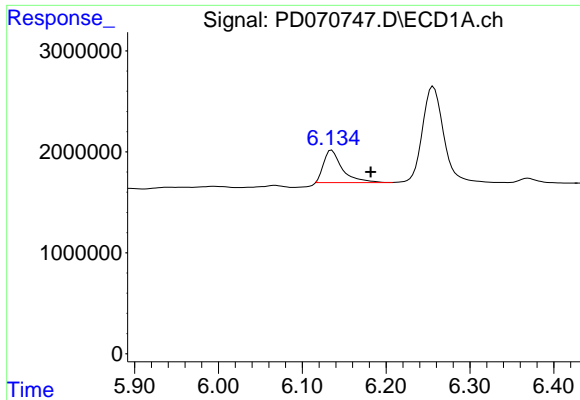
#14 Endrin

R.T.: 6.068 min
 Delta R.T.: 0.013 min
 Response: 306336
 Conc: 0.12 ng/ml



#14 Endrin

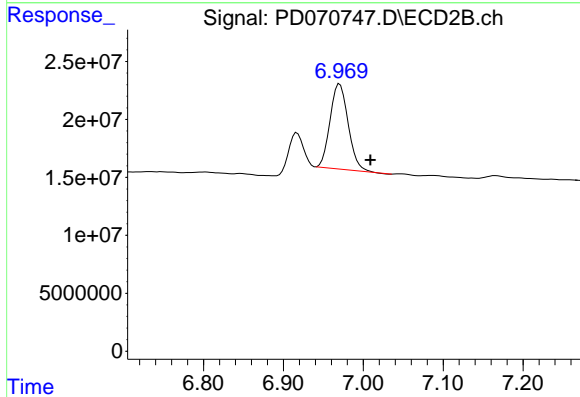
R.T.: 6.917 min
 Delta R.T.: 0.023 min
 Response: 38868423
 Conc: 2.75 ng/ml



#16 4,4'-DDD

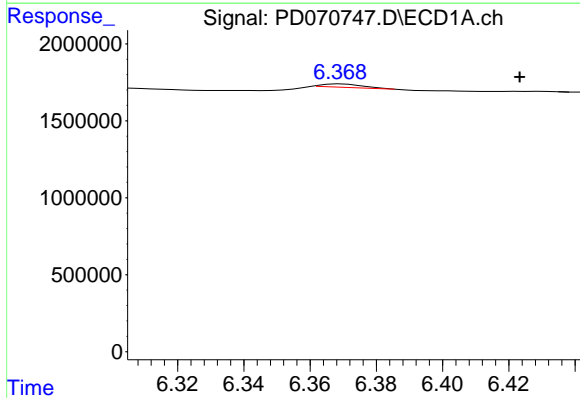
R.T.: 6.135 min
 Delta R.T.: -0.046 min
 Response: 4952656
 Conc: 1.98 ng/ml

Instrument :
 ECD_D
 ClientSampleId :



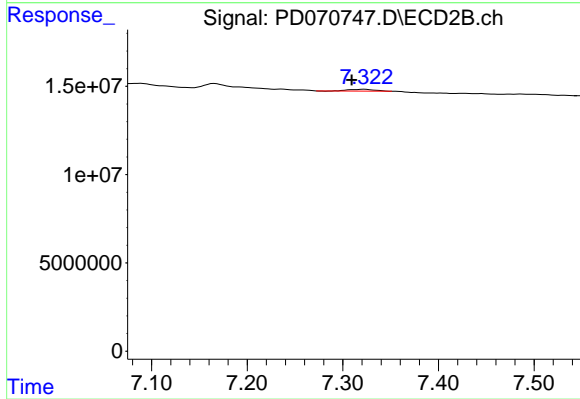
#16 4,4'-DDD

R.T.: 6.970 min
 Delta R.T.: -0.038 min
 Response: 115738255
 Conc: 7.68 ng/ml



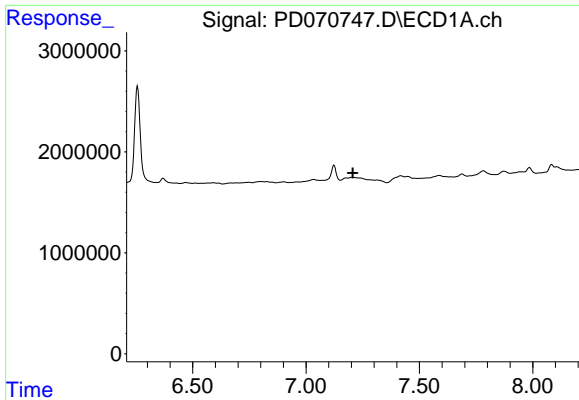
#17 4,4'-DDT

R.T.: 6.370 min
 Delta R.T.: -0.054 min
 Response: 153108
 Conc: N.D.



#17 4,4'-DDT

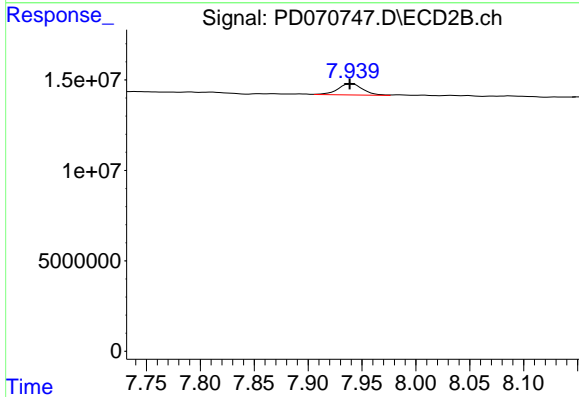
R.T.: 7.323 min
 Delta R.T.: 0.014 min
 Response: 2001447
 Conc: 0.15 ng/ml



#21 Endrin ketone

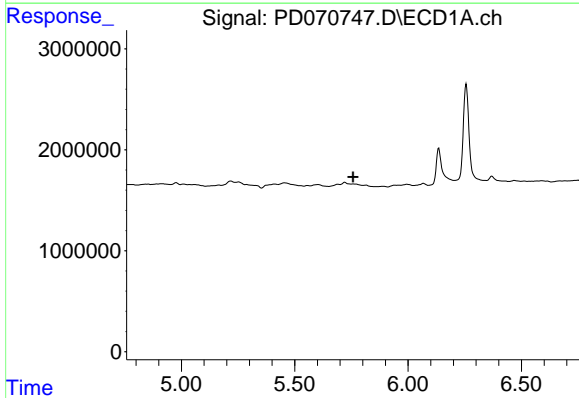
R.T.: 0.000 min
 Exp R.T.: 7.206 min
 Response: 0
 Conc: N.D.

Instrument :
 ECD_D
 ClientSampleId :



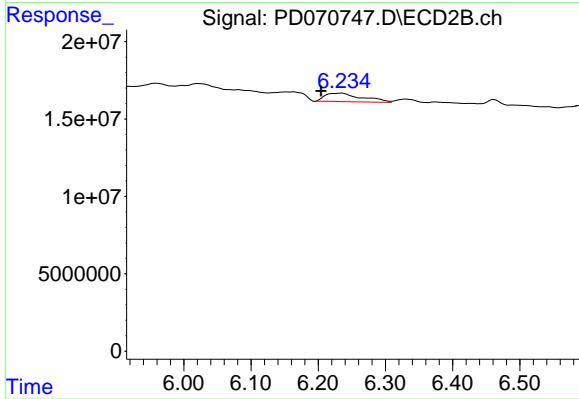
#21 Endrin ketone

R.T.: 7.940 min
 Delta R.T.: 0.002 min
 Response: 9992530
 Conc: 0.84 ng/ml



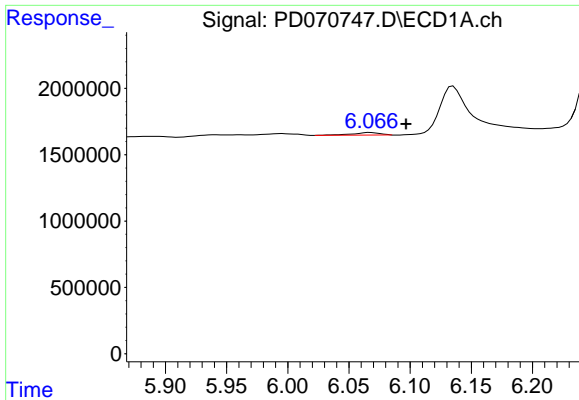
#22 Toxaphene-1

R.T.: 5.691 min
 Delta R.T.: -0.067 min
 Response: -91279
 Conc: N.D.



#22 Toxaphene-1

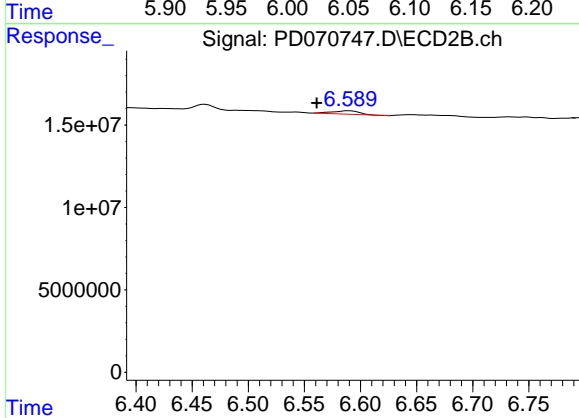
R.T.: 6.236 min
 Delta R.T.: 0.032 min
 Response: 20799388
 Conc: 284.79 ng/ml



#23 Toxaphene-2

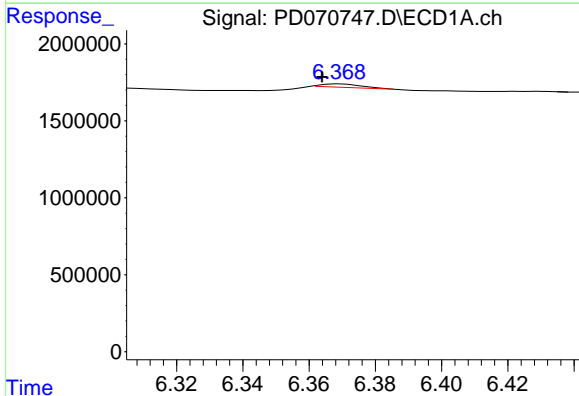
R.T.: 6.068 min
 Delta R.T.: -0.029 min
 Response: 306336
 Conc: 20.13 ng/ml

Instrument :
 ECD_D
 ClientSampleId :



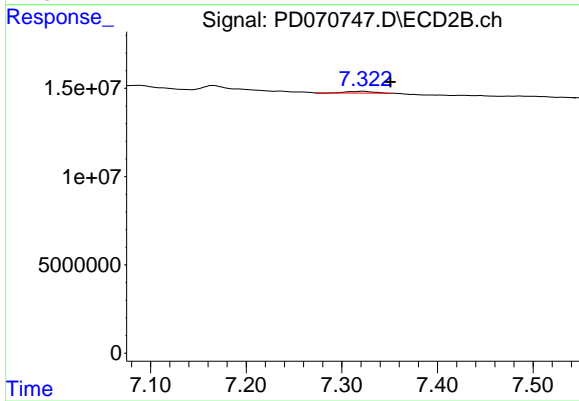
#23 Toxaphene-2

R.T.: 6.590 min
 Delta R.T.: 0.029 min
 Response: 3288589
 Conc: 21.01 ng/ml



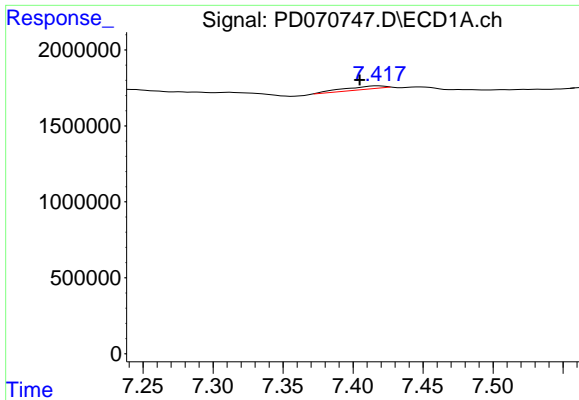
#24 Toxaphene-3

R.T.: 6.370 min
 Delta R.T.: 0.006 min
 Response: 153108
 Conc: 8.81 ng/ml



#24 Toxaphene-3

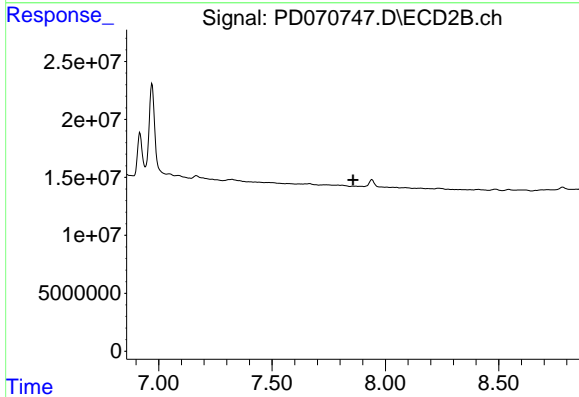
R.T.: 7.323 min
 Delta R.T.: -0.028 min
 Response: 2001447
 Conc: 5.77 ng/ml



#26 Toxaphene-5

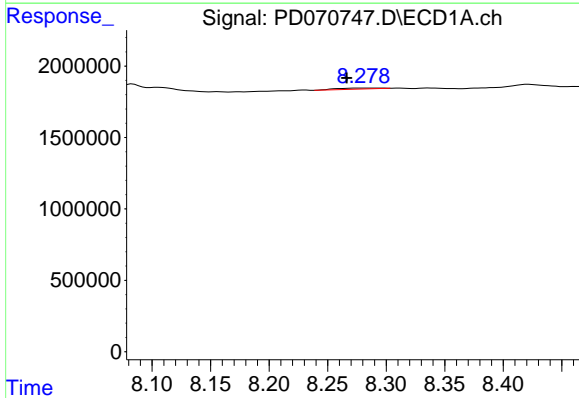
R.T.: 7.418 min
 Delta R.T.: 0.014 min
 Response: 482749
 Conc: 12.70 ng/ml

Instrument :
 ECD_D
 ClientSampleId :



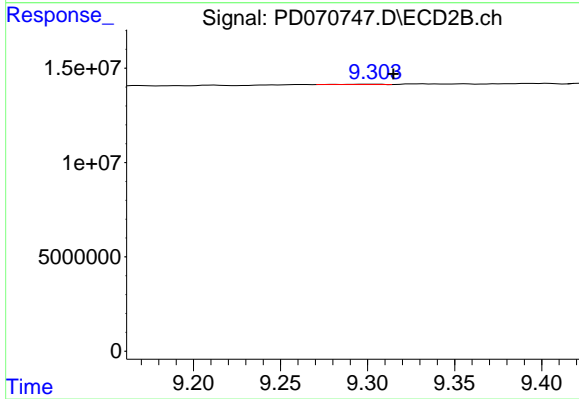
#26 Toxaphene-5

R.T.: 7.856 min
 Delta R.T.: -0.002 min
 Response: -145635
 Conc: N.D.



#27 Decachlorobiphenyl

R.T.: 8.280 min
 Delta R.T.: 0.013 min
 Response: 168823
 Conc: N.D.



#27 Decachlorobiphenyl

R.T.: 9.304 min
 Delta R.T.: -0.011 min
 Response: 265577
 Conc: N.D.