

Data Path : Z:\pestpcbsrv\HPCHEM1\ECD_D\Data\PD070722\
 Data File : PD070751.D
 Signal(s) : Signal #1: ECD1A.ch Signal #2: ECD2B.ch
 Acq On : 06 Jul 2022 16:49
 Operator : AR\AJ
 Sample : INDB224
 Misc :
 ALS Vial : 7 Sample Multiplier: 1

Instrument :
 ECD_D
 ClientSampleId :

Integration File signal 1: autoint1.e
 Integration File signal 2: autoint2.e
 Quant Time: Jul 07 02:37:01 2022
 Quant Method : Z:\pestpcbsrv\HPCHEM1\ECD_D\Method\PD070122CLP.M
 Quant Title : GC Extractables
 QLast Update : Fri Jul 01 11:10:28 2022
 Response via : Initial Calibration
 Integrator: ChemStation

Volume Inj. : 1 µl
 Signal #1 Phase : ZB-MR2 Signal #2 Phase: ZB-MR1
 Signal #1 Info : 30M x 0.32mm x0.2 Signal #2 Info : 30M x 0.32mm x 0.50µm

	Compound	RT#1	RT#2	Resp#1	Resp#2	ng/ml	ng/ml

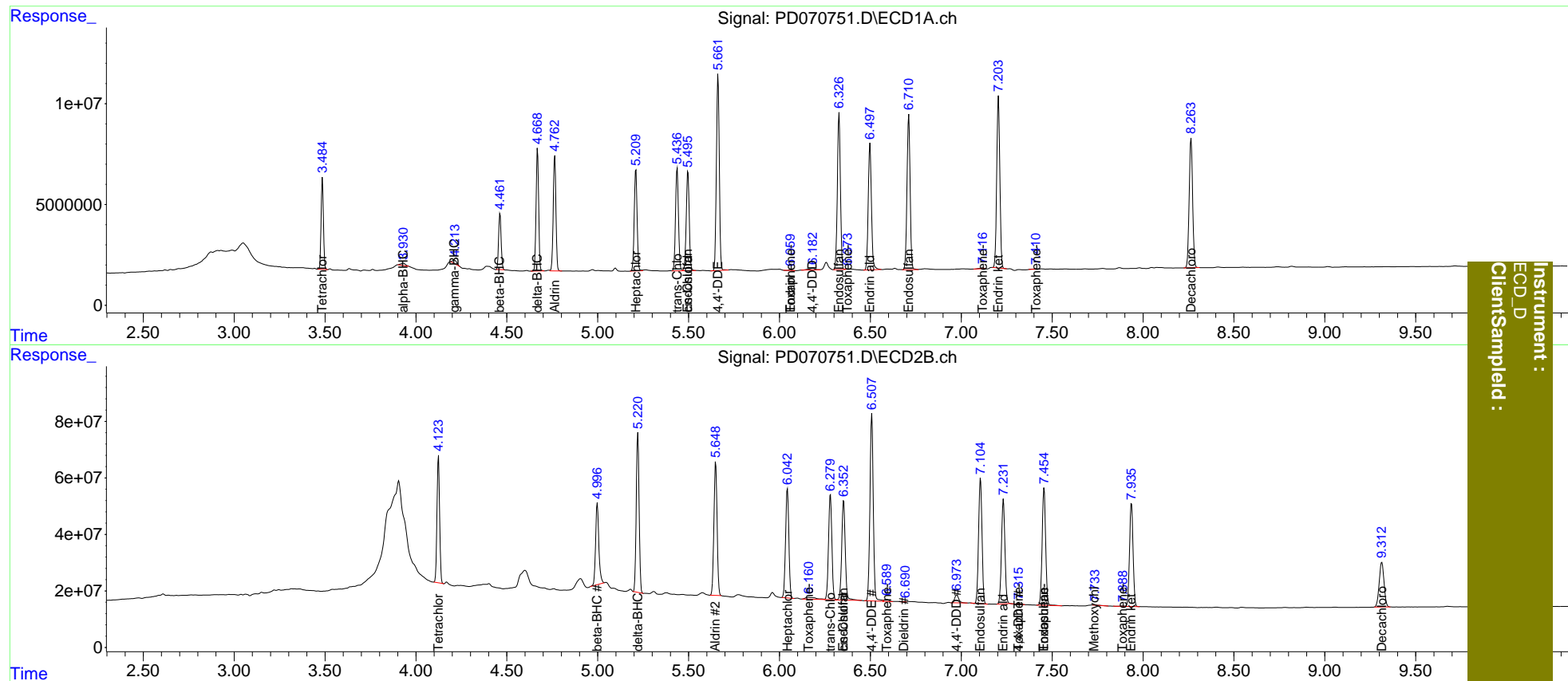
System Monitoring Compounds							
1)	SA Tetrachlo...	3.486	4.124	40128827	450.7E6	16.841	17.453
27)	SA Decachlor...	8.264	9.314	84253377	291.0E6	35.836	41.891
Target Compounds							
2)	A alpha-BHC	3.931	0.000	1949457	0	0.581	N.D. #
3)	MA gamma-BHC...	4.211	4.819	2527561	-103237	0.774	N.D. #
4)	MA Heptachlor	0.000	5.309f	0	1876677	N.D.	<MDL
5)	MB Aldrin	4.764	5.649	59056426	571.7E6	18.122	20.480
6)	B beta-BHC	4.463	4.998	26909787	355.9E6	17.939	22.742 #
7)	B delta-BHC	4.669	5.221	59408216	617.6E6	18.251	20.073
8)	Heptachlo...	5.210	6.044	55233872	485.3E6	18.382	20.540
9)	A Endosulfan I	5.496f	6.353f	55909111	473.6E6	19.923	23.659
10)	B trans-Chl...	5.437	6.280	57141007	475.8E6	18.135	20.780
11)	B cis-Chlor...	5.496	6.353	55909111	473.6E6	18.194	21.864
12)	B 4,4'-DDE	5.662	6.508	107.1E6	841.5E6	36.084	42.966
13)	MA Dieldrin	0.000	6.687	0	2331009	N.D.	0.118
14)	MA Endrin	6.060	6.931f	263403	-839888	0.102	N.D. #
15)	B Endosulfa...	6.328	7.106	89740823	582.2E6	35.763	41.688
16)	A 4,4'-DDD	6.183	6.975	2171022	43155626	0.867	2.864 #
17)	MA 4,4'-DDT	6.376f	7.316	134178	3482797	<MDL	0.266 #
18)	B Endrin al...	6.498	7.232	76848155	485.9E6	36.711	41.782
19)	B Endosulfa...	6.711	7.456	91483465	556.5E6	36.947	42.701
20)	A Methoxychlor	0.000	7.731f	0	1369311	N.D.	0.235
21)	B Endrin ke...	7.205	7.936	101.3E6	495.1E6	37.534	41.856
22)	Toxaphene-1	0.000	6.161f	0	28176101	N.D.	385.796
23)	Toxaphene-2	6.060f	6.590	263403	12630439	17.305	80.705 #
24)	Toxaphene-3	6.376	7.316	134178	3482797	7.719	10.033 #
25)	Toxaphene-4	7.117	7.456	690681	556.5E6	9.612	2023.835 #
26)	Toxaphene-5	7.411	7.889	351642	2108664	9.248	14.633 #

(f)=RT Delta > 1/2 Window (#)=Amounts differ by > 25% (m)=manual int.

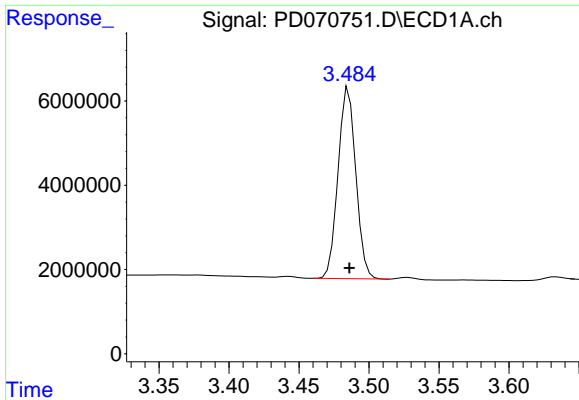
Data Path : Z:\pestpcbsrv\HPCHEM1\ECD_D\Data\PD070722\
 Data File : PD070751.D
 Signal(s) : Signal #1: ECD1A.ch Signal #2: ECD2B.ch
 Acq On : 06 Jul 2022 16:49
 Operator : AR\AJ
 Sample : INDB224
 Misc :
 ALS Vial : 7 Sample Multiplier: 1

Integration File signal 1: autoint1.e
 Integration File signal 2: autoint2.e
 Quant Time: Jul 07 02:37:01 2022
 Quant Method : Z:\pestpcbsrv\HPCHEM1\ECD_D\Method\PD070122CLP.M
 Quant Title : GC Extractables
 QLast Update : Fri Jul 01 11:10:28 2022
 Response via : Initial Calibration
 Integrator: ChemStation

Volume Inj. : 1 µl
 Signal #1 Phase : ZB-MR2 Signal #2 Phase: ZB-MR1
 Signal #1 Info : 30M x 0.32mm x0.2 Signal #2 Info : 30M x 0.32mm x 0.50µm

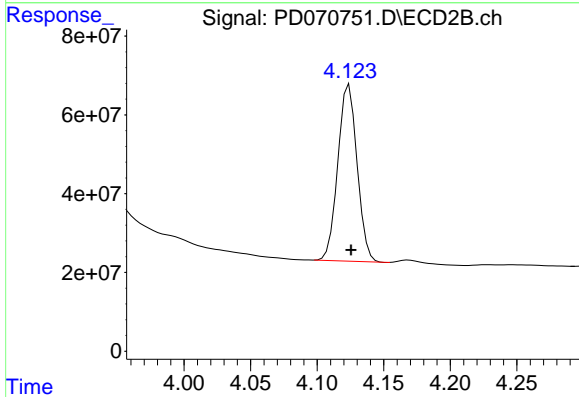


Instrument : ECD_D
 Client/Sample :

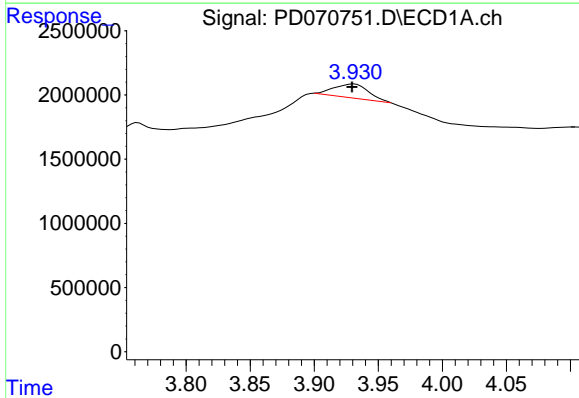


#1 Tetrachloro-m-xylene
 R.T.: 3.486 min
 Delta R.T.: 0.000 min
 Response: 40128827
 Conc: 16.84 ng/ml

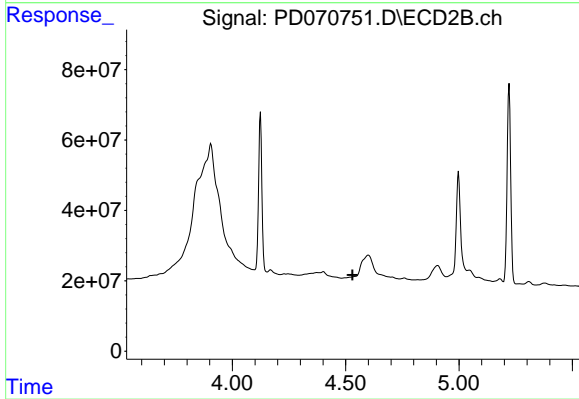
Instrument :
 ECD_D
 ClientSampleId :



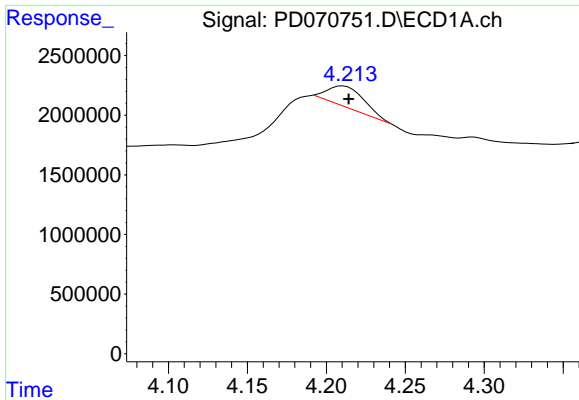
#1 Tetrachloro-m-xylene
 R.T.: 4.124 min
 Delta R.T.: -0.001 min
 Response: 450701624
 Conc: 17.45 ng/ml



#2 alpha-BHC
 R.T.: 3.931 min
 Delta R.T.: 0.002 min
 Response: 1949457
 Conc: 0.58 ng/ml

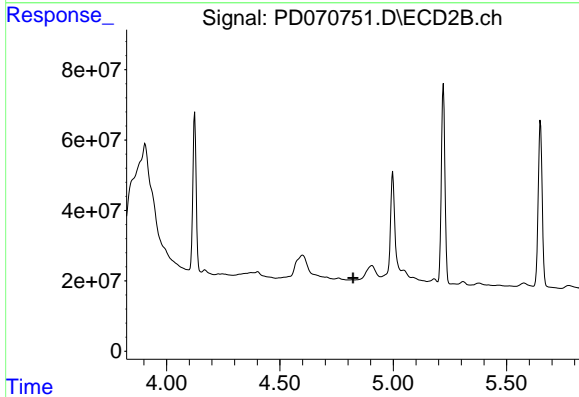


#2 alpha-BHC
 R.T.: 0.000 min
 Exp R.T. : 4.530 min
 Response: 0
 Conc: N.D.

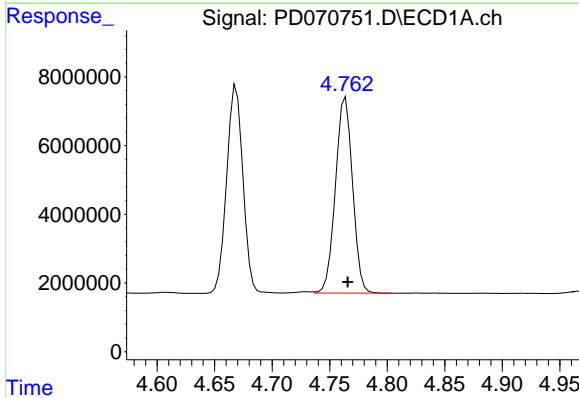


#3 gamma-BHC (Lindane)
 R.T.: 4.211 min
 Delta R.T.: -0.004 min
 Response: 2527561
 Conc: 0.77 ng/ml

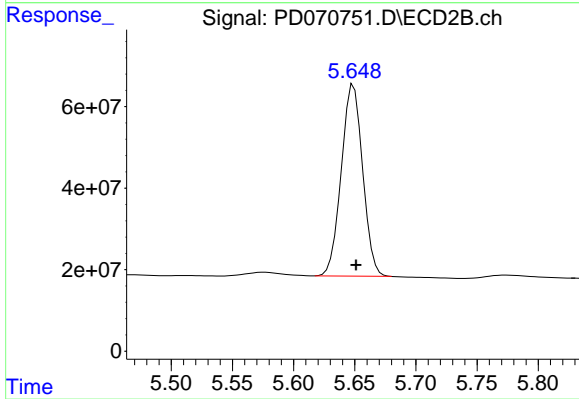
Instrument :
 ECD_D
 ClientSampleId :



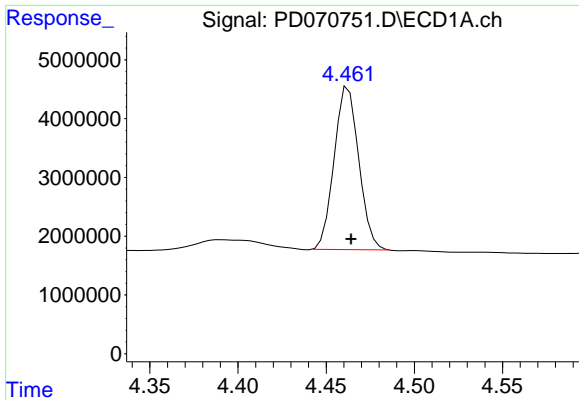
#3 gamma-BHC (Lindane)
 R.T.: 4.819 min
 Delta R.T.: -0.004 min
 Response: -103237
 Conc: N.D.



#5 Aldrin
 R.T.: 4.764 min
 Delta R.T.: -0.002 min
 Response: 59056426
 Conc: 18.12 ng/ml



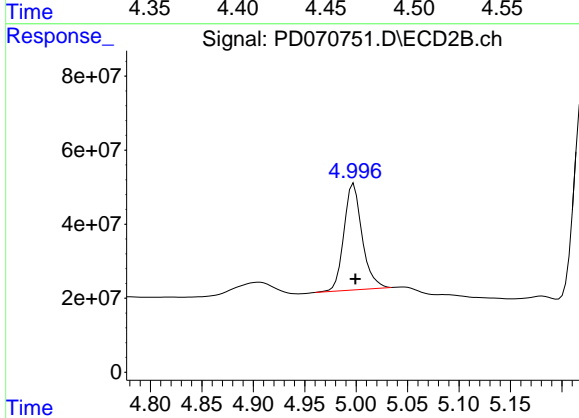
#5 Aldrin
 R.T.: 5.649 min
 Delta R.T.: -0.002 min
 Response: 571737038
 Conc: 20.48 ng/ml



#6 beta-BHC

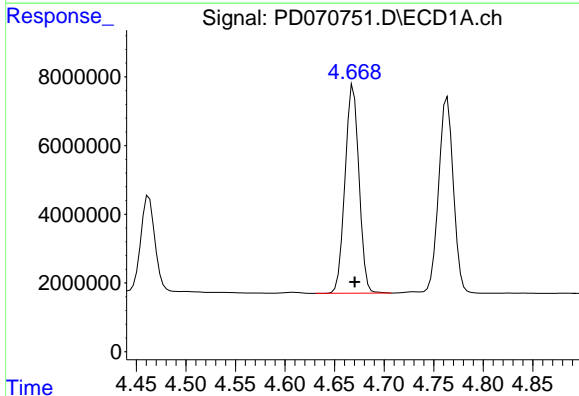
R.T.: 4.463 min
 Delta R.T.: -0.001 min
 Response: 26909787
 Conc: 17.94 ng/ml

Instrument :
 ECD_D
 ClientSampleId :



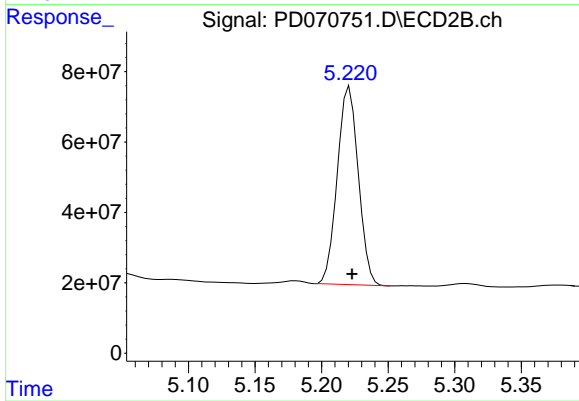
#6 beta-BHC

R.T.: 4.998 min
 Delta R.T.: -0.001 min
 Response: 355943174
 Conc: 22.74 ng/ml



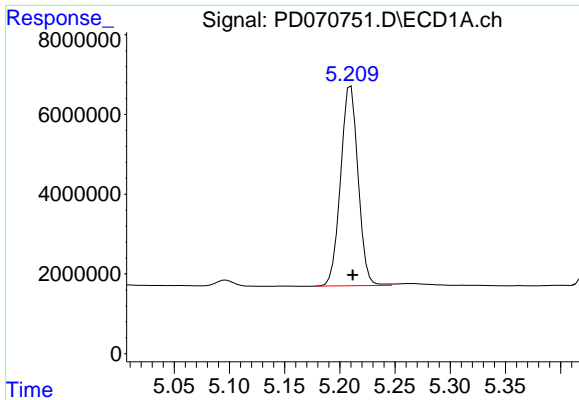
#7 delta-BHC

R.T.: 4.669 min
 Delta R.T.: -0.001 min
 Response: 59408216
 Conc: 18.25 ng/ml



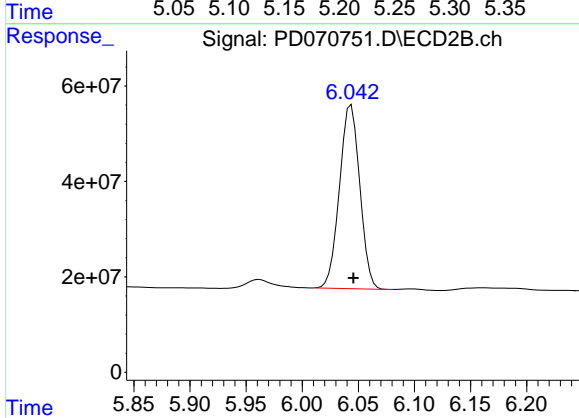
#7 delta-BHC

R.T.: 5.221 min
 Delta R.T.: -0.002 min
 Response: 617578164
 Conc: 20.07 ng/ml

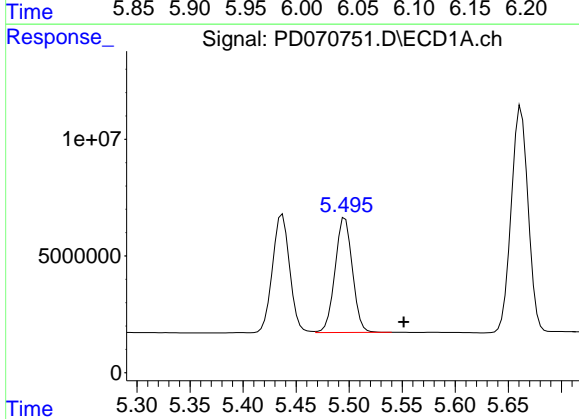


#8 Heptachlor epoxide
 R.T.: 5.210 min
 Delta R.T.: -0.002 min
 Response: 55233872
 Conc: 18.38 ng/ml

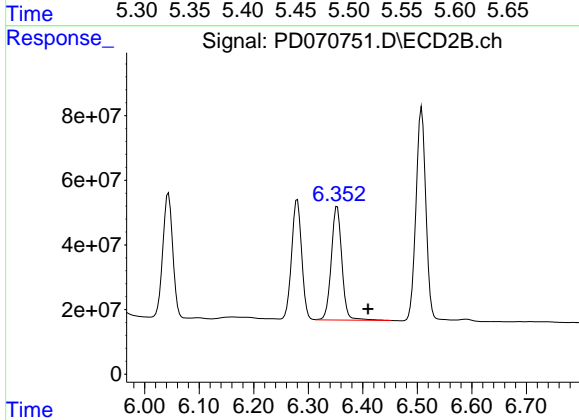
Instrument :
 ECD_D
 ClientSampleId :



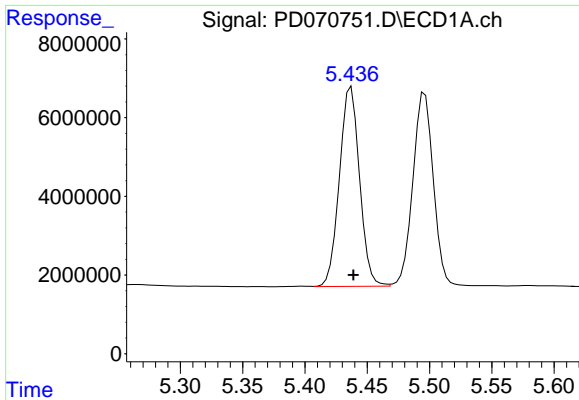
#8 Heptachlor epoxide
 R.T.: 6.044 min
 Delta R.T.: -0.002 min
 Response: 485256419
 Conc: 20.54 ng/ml



#9 Endosulfan I
 R.T.: 5.496 min
 Delta R.T.: -0.055 min
 Response: 55909111
 Conc: 19.92 ng/ml



#9 Endosulfan I
 R.T.: 6.353 min
 Delta R.T.: -0.056 min
 Response: 473646498
 Conc: 23.66 ng/ml

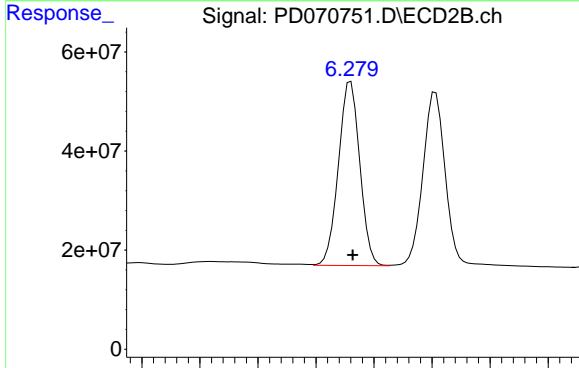


#10 trans-Chlordane

R.T.: 5.437 min
 Delta R.T.: -0.002 min
 Response: 57141007
 Conc: 18.13 ng/ml

Instrument :
 ECD_D
 ClientSampleId :

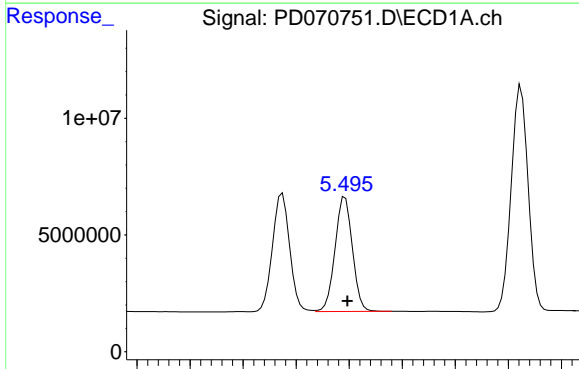
Time 5.30 5.35 5.40 5.45 5.50 5.55 5.60



#10 trans-Chlordane

R.T.: 6.280 min
 Delta R.T.: -0.002 min
 Response: 475819508
 Conc: 20.78 ng/ml

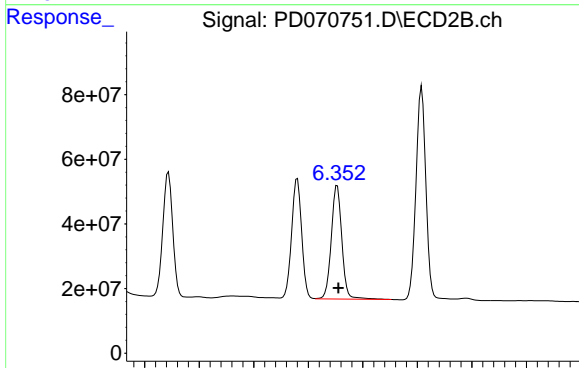
Time 6.10 6.15 6.20 6.25 6.30 6.35 6.40 6.45



#11 cis-Chlordane

R.T.: 5.496 min
 Delta R.T.: -0.002 min
 Response: 55909111
 Conc: 18.19 ng/ml

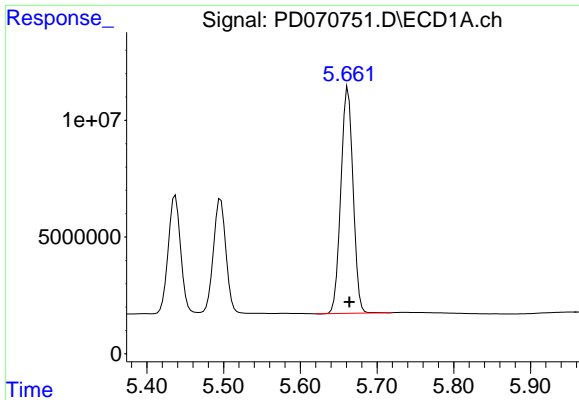
Time 5.30 5.35 5.40 5.45 5.50 5.55 5.60 5.65



#11 cis-Chlordane

R.T.: 6.353 min
 Delta R.T.: -0.002 min
 Response: 473646498
 Conc: 21.86 ng/ml

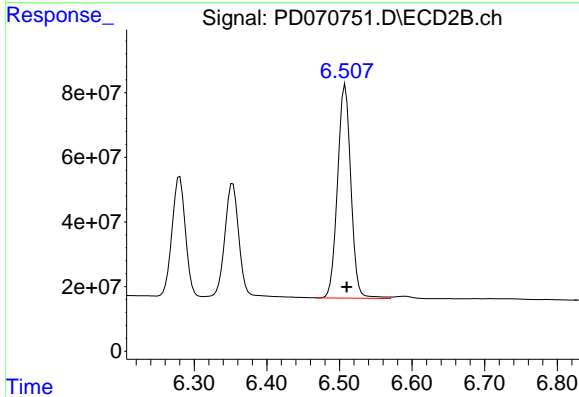
Time 6.00 6.10 6.20 6.30 6.40 6.50 6.60 6.70



#12 4,4'-DDE

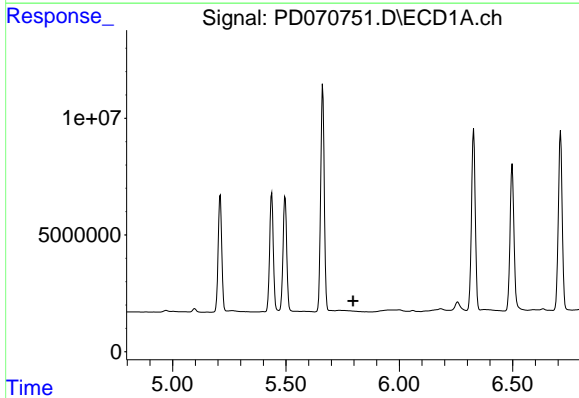
R.T.: 5.662 min
 Delta R.T.: -0.002 min
 Response: 107101609
 Conc: 36.08 ng/ml

Instrument :
 ECD_D
 ClientSampleId :



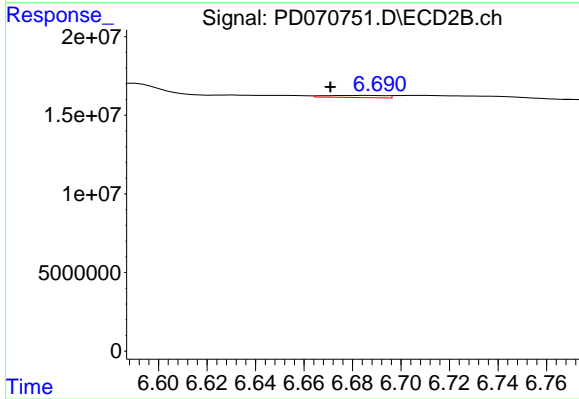
#12 4,4'-DDE

R.T.: 6.508 min
 Delta R.T.: -0.002 min
 Response: 841485312
 Conc: 42.97 ng/ml



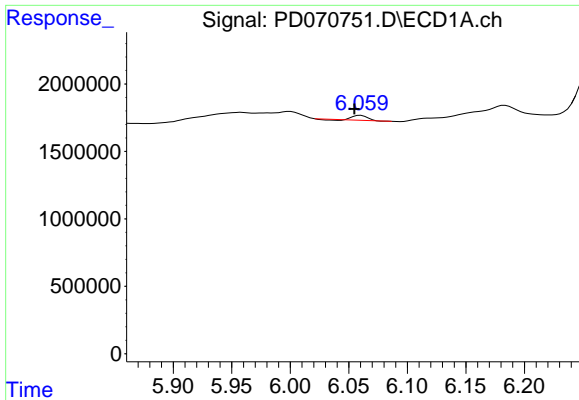
#13 Dieldrin

R.T.: 0.000 min
 Exp R.T. : 5.797 min
 Response: 0
 Conc: N.D.



#13 Dieldrin

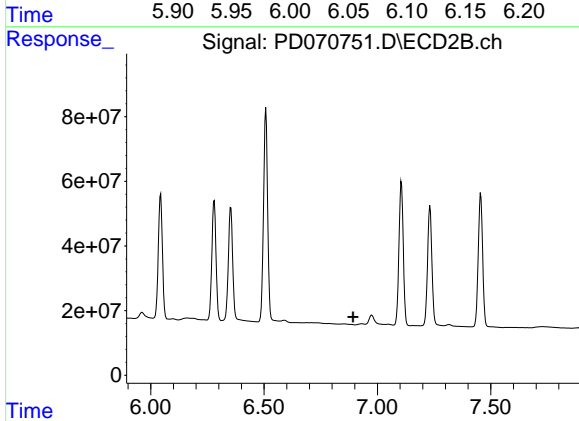
R.T.: 6.687 min
 Delta R.T.: 0.016 min
 Response: 2331009
 Conc: 0.12 ng/ml



#14 Endrin

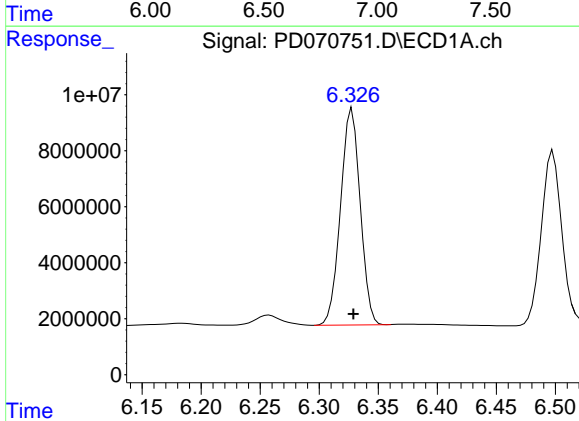
R.T.: 6.060 min
 Delta R.T.: 0.005 min
 Response: 263403
 Conc: 0.10 ng/ml

Instrument :
 ECD_D
 ClientSampleId :



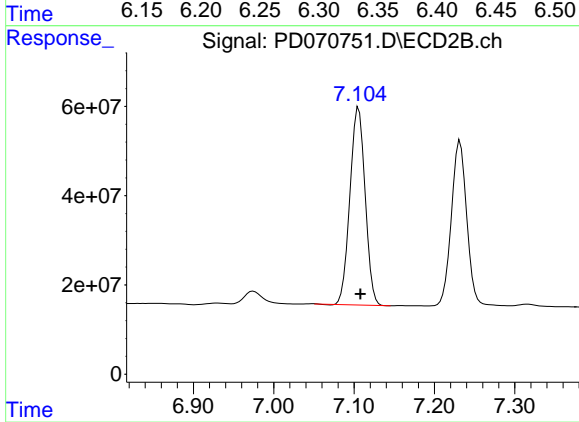
#14 Endrin

R.T.: 6.931 min
 Delta R.T.: 0.037 min
 Response: -839888
 Conc: N.D.



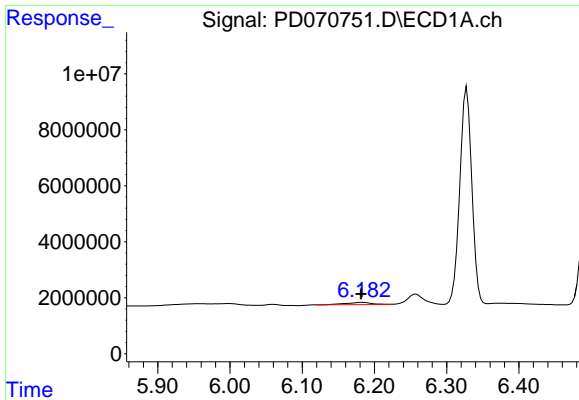
#15 Endosulfan II

R.T.: 6.328 min
 Delta R.T.: -0.001 min
 Response: 89740823
 Conc: 35.76 ng/ml



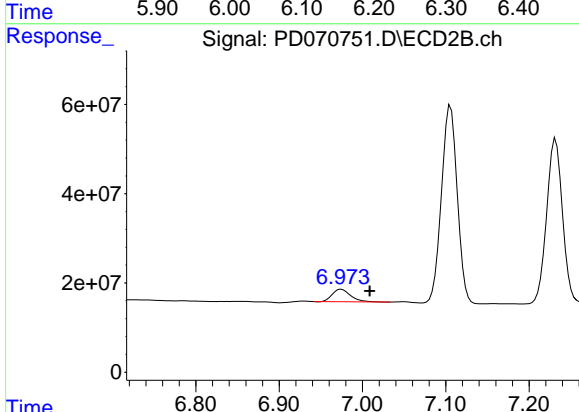
#15 Endosulfan II

R.T.: 7.106 min
 Delta R.T.: -0.002 min
 Response: 582150081
 Conc: 41.69 ng/ml

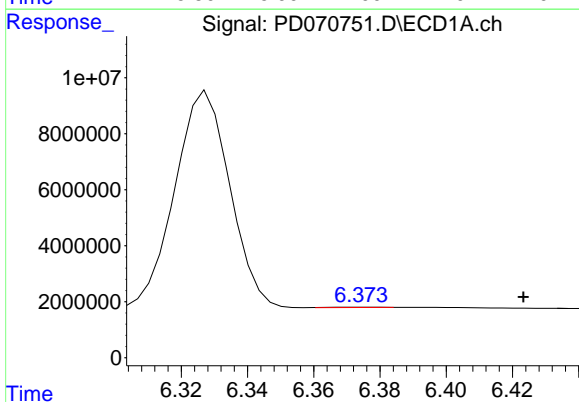


#16 4,4'-DDD
 R.T.: 6.183 min
 Delta R.T.: 0.002 min
 Response: 2171022
 Conc: 0.87 ng/ml

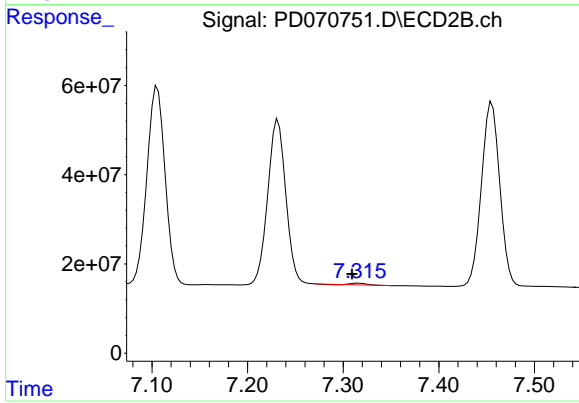
Instrument :
 ECD_D
 ClientSampleId :



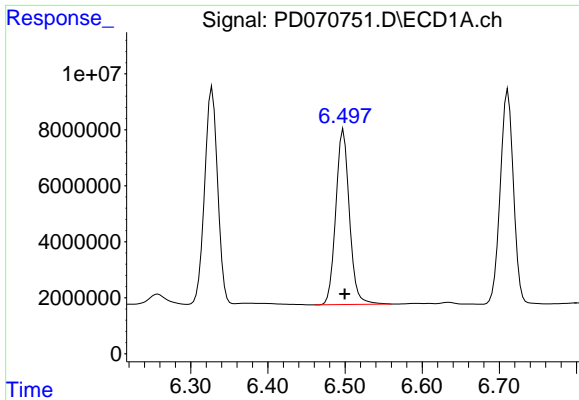
#16 4,4'-DDD
 R.T.: 6.975 min
 Delta R.T.: -0.034 min
 Response: 43155626
 Conc: 2.86 ng/ml



#17 4,4'-DDT
 R.T.: 6.376 min
 Delta R.T.: -0.048 min
 Response: 134178
 Conc: N.D.



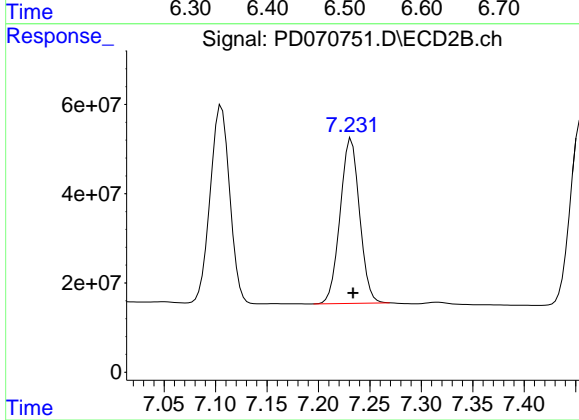
#17 4,4'-DDT
 R.T.: 7.316 min
 Delta R.T.: 0.007 min
 Response: 3482797
 Conc: 0.27 ng/ml



#18 Endrin aldehyde

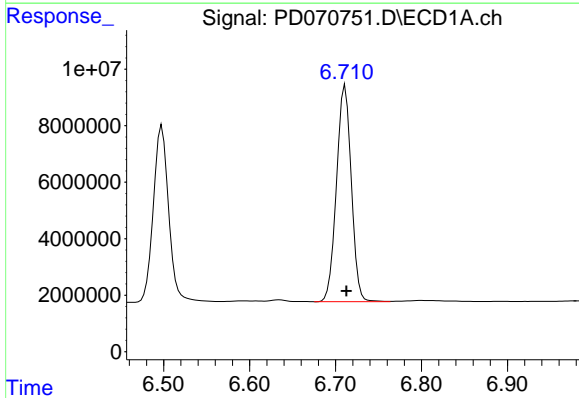
R.T.: 6.498 min
 Delta R.T.: -0.002 min
 Response: 76848155
 Conc: 36.71 ng/ml

Instrument :
 ECD_D
 ClientSampleId :



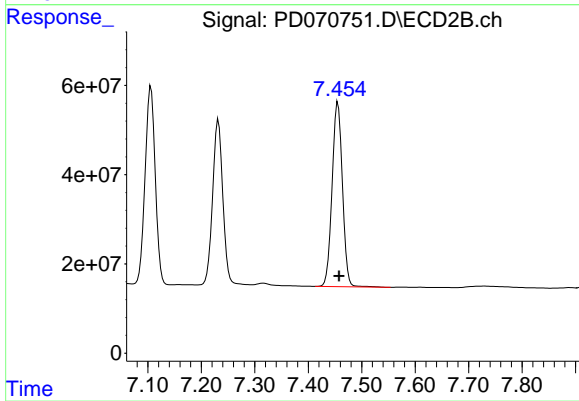
#18 Endrin aldehyde

R.T.: 7.232 min
 Delta R.T.: -0.002 min
 Response: 485929713
 Conc: 41.78 ng/ml



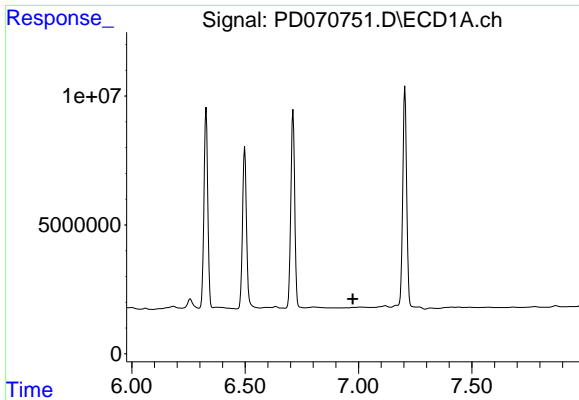
#19 Endosulfan Sulfate

R.T.: 6.711 min
 Delta R.T.: -0.002 min
 Response: 91483465
 Conc: 36.95 ng/ml



#19 Endosulfan Sulfate

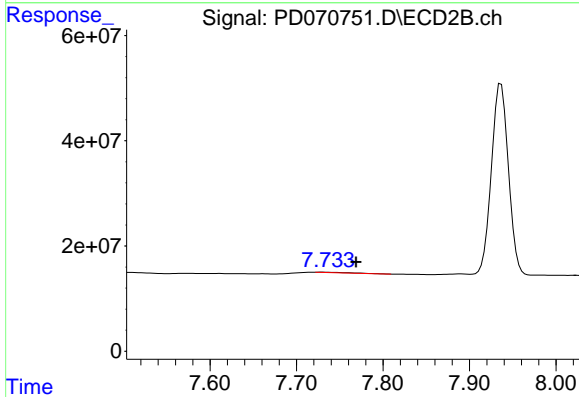
R.T.: 7.456 min
 Delta R.T.: -0.002 min
 Response: 556471152
 Conc: 42.70 ng/ml



#20 Methoxychlor

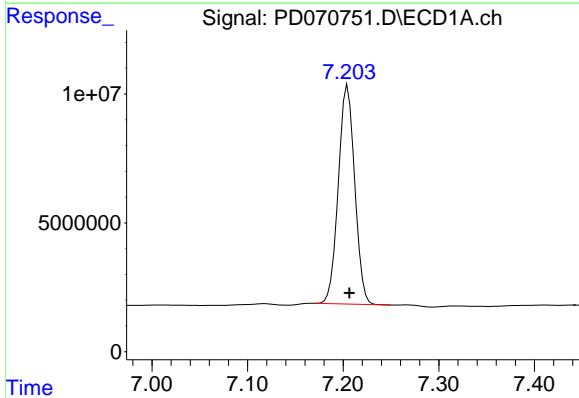
R.T.: 0.000 min
 Exp R.T.: 6.975 min
 Response: 0
 Conc: N.D.

Instrument :
 ECD_D
 ClientSampleId :



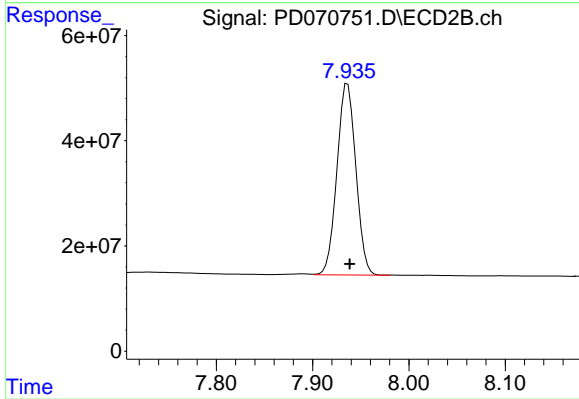
#20 Methoxychlor

R.T.: 7.731 min
 Delta R.T.: -0.038 min
 Response: 1369311
 Conc: 0.23 ng/ml



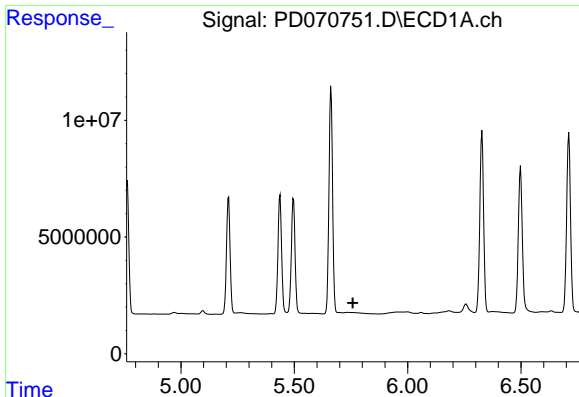
#21 Endrin ketone

R.T.: 7.205 min
 Delta R.T.: -0.002 min
 Response: 101251160
 Conc: 37.53 ng/ml



#21 Endrin ketone

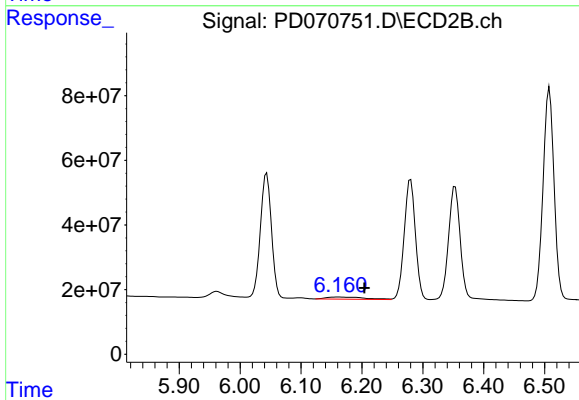
R.T.: 7.936 min
 Delta R.T.: -0.002 min
 Response: 495077823
 Conc: 41.86 ng/ml



#22 Toxaphene-1

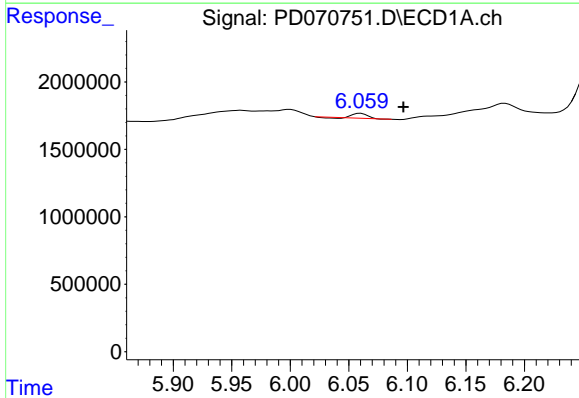
R.T.: 0.000 min
 Exp R.T.: 5.758 min
 Response: 0
 Conc: N.D.

Instrument :
 ECD_D
 ClientSampleId :



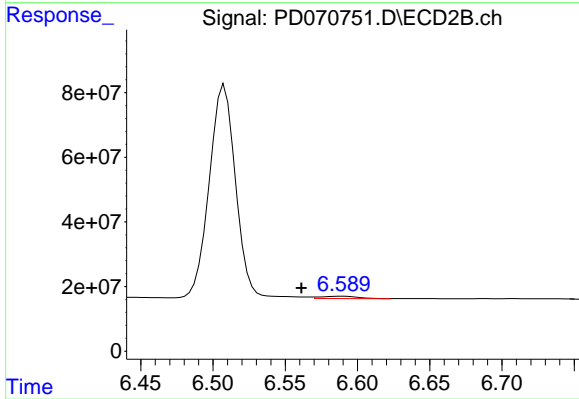
#22 Toxaphene-1

R.T.: 6.161 min
 Delta R.T.: -0.043 min
 Response: 28176101
 Conc: 385.80 ng/ml



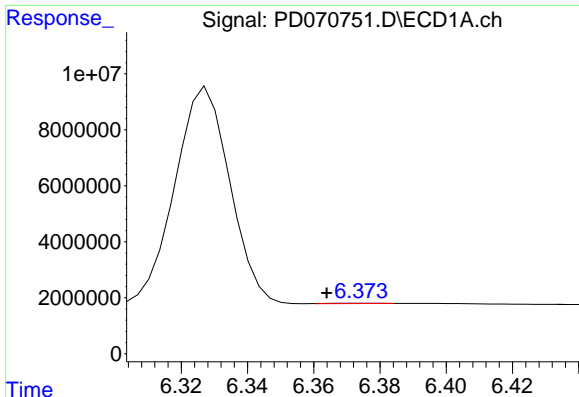
#23 Toxaphene-2

R.T.: 6.060 min
 Delta R.T.: -0.037 min
 Response: 263403
 Conc: 17.30 ng/ml



#23 Toxaphene-2

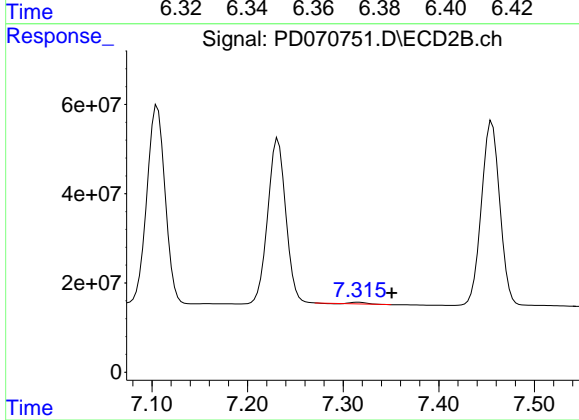
R.T.: 6.590 min
 Delta R.T.: 0.029 min
 Response: 12630439
 Conc: 80.70 ng/ml



#24 Toxaphene-3

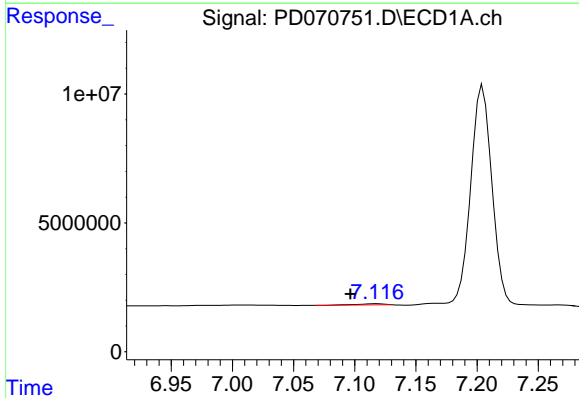
R.T.: 6.376 min
 Delta R.T.: 0.012 min
 Response: 134178
 Conc: 7.72 ng/ml

Instrument :
 ECD_D
 ClientSampleId :



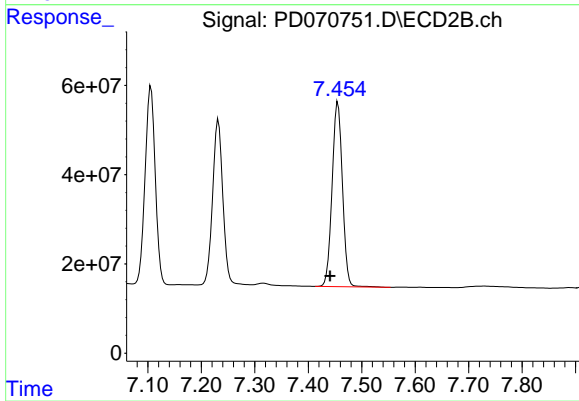
#24 Toxaphene-3

R.T.: 7.316 min
 Delta R.T.: -0.035 min
 Response: 3482797
 Conc: 10.03 ng/ml



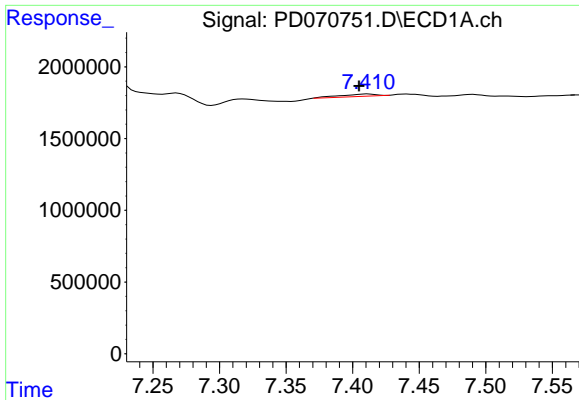
#25 Toxaphene-4

R.T.: 7.117 min
 Delta R.T.: 0.021 min
 Response: 690681
 Conc: 9.61 ng/ml



#25 Toxaphene-4

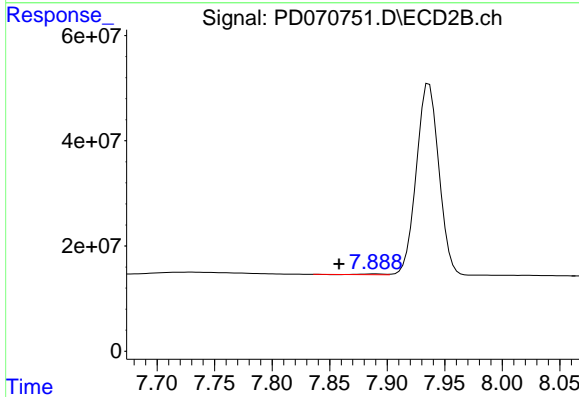
R.T.: 7.456 min
 Delta R.T.: 0.015 min
 Response: 556471152
 Conc: 2023.84 ng/ml



#26 Toxaphene-5

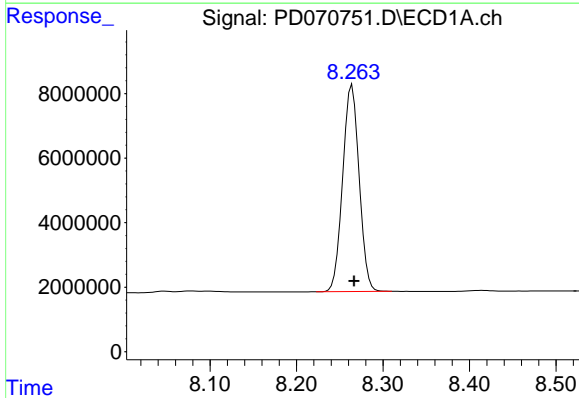
R.T.: 7.411 min
 Delta R.T.: 0.007 min
 Response: 351642
 Conc: 9.25 ng/ml

Instrument :
 ECD_D
 ClientSampleId :



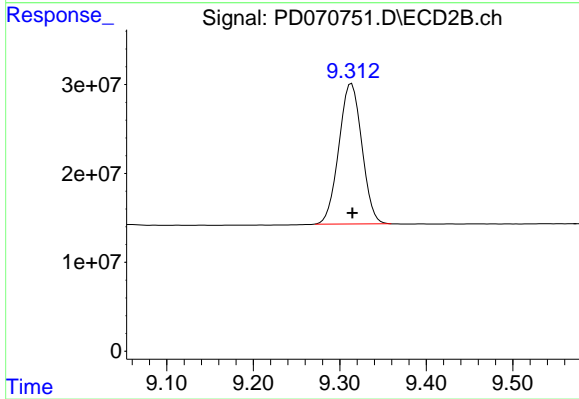
#26 Toxaphene-5

R.T.: 7.889 min
 Delta R.T.: 0.031 min
 Response: 2108664
 Conc: 14.63 ng/ml



#27 Decachlorobiphenyl

R.T.: 8.264 min
 Delta R.T.: -0.002 min
 Response: 84253377
 Conc: 35.84 ng/ml



#27 Decachlorobiphenyl

R.T.: 9.314 min
 Delta R.T.: -0.001 min
 Response: 291030038
 Conc: 41.89 ng/ml