

Data Path : Z:\pestpcbsrv\HPCHEM1\ECD\_D\Data\PD070819\  
 Data File : PD053917.D  
 Signal(s) : Signal #1: ECD1A.CH Signal #2: ECD2B.CH  
 Acq On : 08 Jul 2019 11:03  
 Operator : SM\AJ  
 Sample : INDB327  
 Misc :  
 ALS Vial : 11 Sample Multiplier: 1

Instrument :  
 ECD\_D  
 ClientSampleId :  
 INDB327

Integration File signal 1: autoint1.e  
 Integration File signal 2: autoint2.e  
 Quant Time: Jul 08 14:34:36 2019  
 Quant Method : Z:\pestpcbsrv\HPCHEM1\ECD\_D\Method\PD070319CLP.M  
 Quant Title : GC Extractables  
 QLast Update : Fri Jul 05 03:58:18 2019  
 Response via : Initial Calibration  
 Integrator: ChemStation 6890 Scale Mode: Large solvent peaks clipped

Volume Inj. : 1 µl  
 Signal #1 Phase : ZB-MR2 Signal #2 Phase: ZB-MR1  
 Signal #1 Info : 30M x 0.32mm x0.2 Signal #2 Info : 30M x 0.32mm x 0.50µm

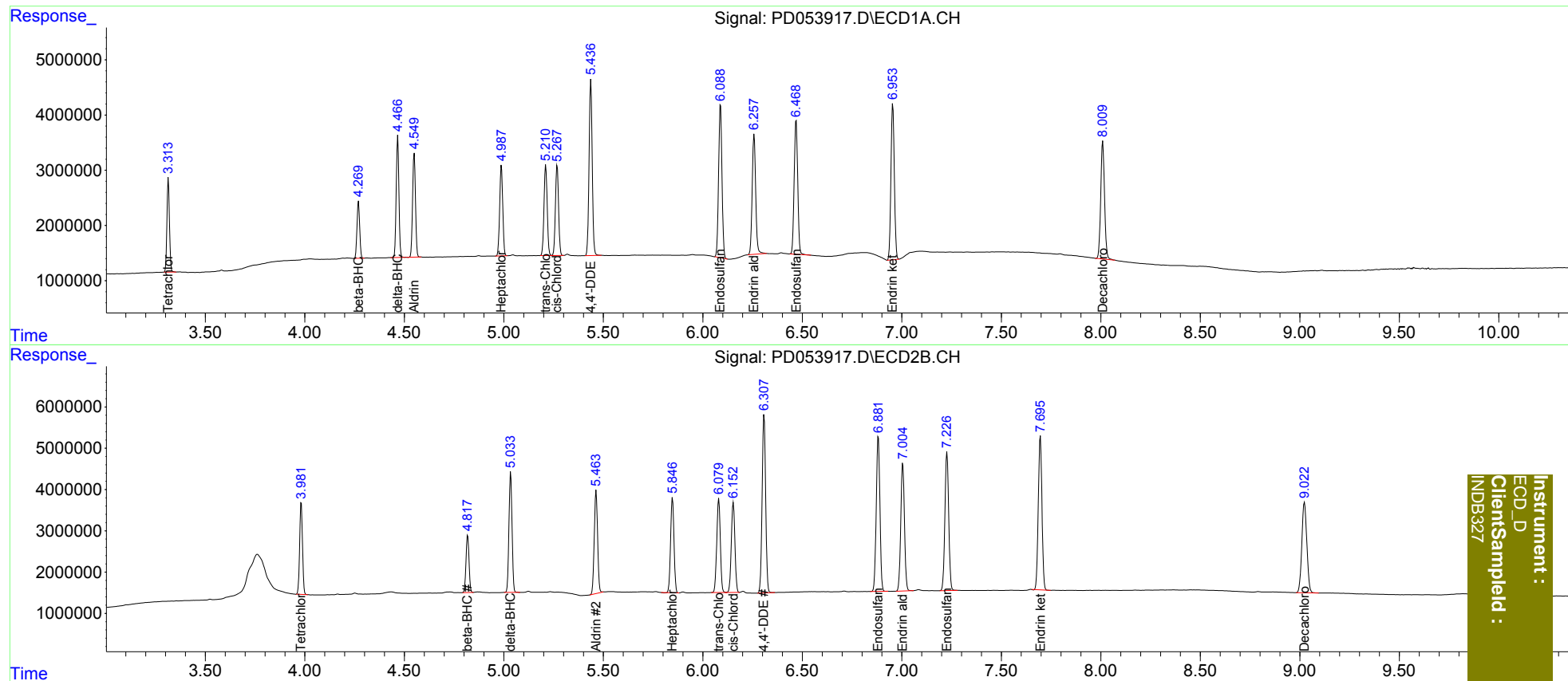
	Compound	RT#1	RT#2	Resp#1	Resp#2	ng/ml	ng/ml
-----							
System Monitoring Compounds							
1)	SA Tetrachlo...	3.314	3.982	15135071	22284670	19.836	19.759
27)	SA Decachlor...	8.010	9.023	28370724	38181476	38.200	36.543
Target Compounds							
5)	MB Aldrin	4.550	5.464	18966844	28930484	19.436	19.310
6)	B beta-BHC	4.270	4.819	9593940	14684229	19.872	20.047
7)	B delta-BHC	4.467	5.035	20741895	31056932	19.331	20.299
8)	B Heptachlo...	4.988	5.848	17702367	27266695	19.168	18.997
10)	B trans-Chl...	5.211	6.080	18287532	28129555	19.106	18.636
11)	B cis-Chlor...	5.268	6.153	17839335	27438353	19.103	18.633
12)	B 4,4'-DDE	5.438	6.308	34903692	52908866	38.519	37.595
15)	B Endosulfa...	6.089	6.882	32745095	48268097	37.985	36.870
18)	B Endrin al...	6.258	7.005	26610511	39960464	37.345	36.569
19)	B Endosulfa...	6.469	7.227	29942975	44242348	37.104	36.127
21)	B Endrin ke...	6.955	7.696	33360223	47753329	37.181	36.404

(f)=RT Delta > 1/2 Window (#)=Amounts differ by > 25% (m)=manual int.

Data Path : Z:\pestpcbsrv\HPCHEM1\ECD\_D\Data\PD070819\  
 Data File : PD053917.D  
 Signal(s) : Signal #1: ECD1A.CH Signal #2: ECD2B.CH  
 Acq On : 08 Jul 2019 11:03  
 Operator : SM\AJ  
 Sample : INDB327  
 Misc :  
 ALS Vial : 11 Sample Multiplier: 1

Integration File signal 1: autoint1.e  
 Integration File signal 2: autoint2.e  
 Quant Time: Jul 08 14:34:36 2019  
 Quant Method : Z:\pestpcbsrv\HPCHEM1\ECD\_D\Method\PD070319CLP.M  
 Quant Title : GC Extractables  
 QLast Update : Fri Jul 05 03:58:18 2019  
 Response via : Initial Calibration  
 Integrator: ChemStation 6890 Scale Mode: Large solvent peaks clipped

Volume Inj. : 1 µl  
 Signal #1 Phase : ZB-MR2 Signal #2 Phase: ZB-MR1  
 Signal #1 Info : 30M x 0.32mm x0.2 Signal #2 Info : 30M x 0.32mm x 0.50µm



Instrument :  
 ECD\_D  
 ClientSampleId :  
 INDB327