

Data Path : Z:\pestpcbsrv\HPCHEM1\ECD_D\Data\PD070820\
 Data File : PD058489.D
 Signal(s) : Signal #1: ECD1A.ch Signal #2: ECD2B.ch
 Acq On : 08 Jul 2020 12:51
 Operator : AJ\MA
 Sample : INDA303
 Misc :
 ALS Vial : 8 Sample Multiplier: 1

Instrument :
 ECD_D
 ClientSampleId :
 INDA303

Integration File signal 1: autoint1.e
 Integration File signal 2: autoint2.e
 Quant Time: Jul 08 16:23:54 2020
 Quant Method : Z:\pestpcbsrv\HPCHEM1\ECD_D\Method\PD070220CLP.M
 Quant Title : GC Extractables
 QLast Update : Thu Jul 02 16:12:43 2020
 Response via : Initial Calibration
 Integrator: ChemStation

Volume Inj. : 1 µl
 Signal #1 Phase : ZB-MR2 Signal #2 Phase: ZB-MR1
 Signal #1 Info : 30M x 0.32mm x0.2 Signal #2 Info : 30M x 0.32mm x 0.50µm

Compound	RT#1	RT#2	Resp#1	Resp#2	ng/ml	ng/ml

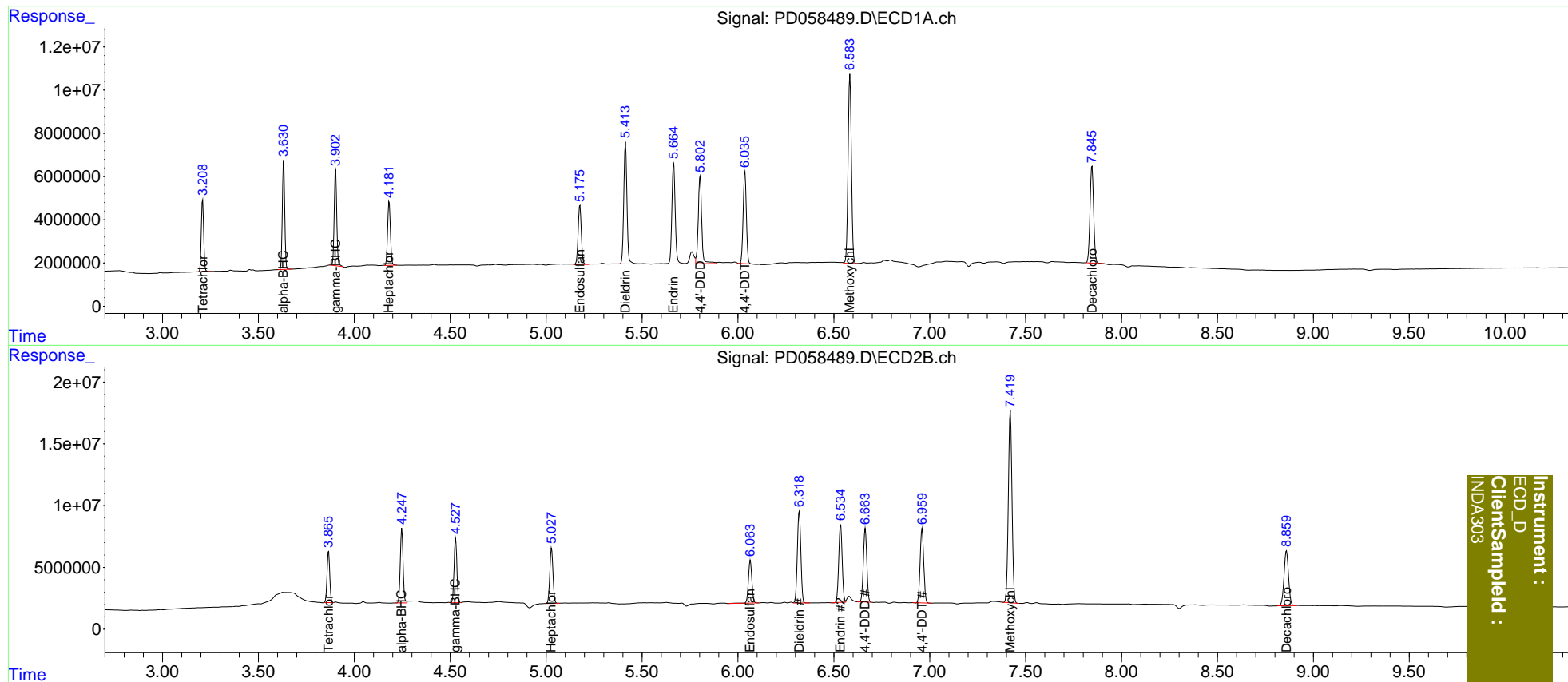
System Monitoring Compounds						
1) SA Tetrachlo...	3.210	3.866	29401775	40791391	17.493	17.901
27) SA Decachlor...	7.846	8.860	58732266	72293917	33.221	34.027
Target Compounds						
2) A alpha-BHC	3.632	4.248	43838253	61010893	17.617	18.026
3) MA gamma-BHC...	3.903	4.529	41036301	53940440	17.598	17.403
4) MA Heptachlor	4.182	5.028	29984146	51500666	18.941	17.717
9) A Endosulfan I	5.176	6.065	31790251	43293788	17.679	17.731
13) MA Dieldrin	5.414	6.320	65303126	94996247	37.868	34.889
14) MA Endrin	5.665	6.536	57047870	78820017	38.619	34.508
16) A 4,4'-DDD	5.803	6.664	51599849	74238917	42.696	34.160
17) MA 4,4'-DDT	6.037	6.961	49193770	77788477	34.662	34.503
20) A Methoxychlor	6.584	7.420	105.9E6	206.5E6	194.120	176.559

(f)=RT Delta > 1/2 Window (#)=Amounts differ by > 25% (m)=manual int.

Data Path : Z:\pestpcbsrv\HPCHEM1\ECD_D\Data\PD070820\
 Data File : PD058489.D
 Signal(s) : Signal #1: ECD1A.ch Signal #2: ECD2B.ch
 Acq On : 08 Jul 2020 12:51
 Operator : AJ\MA
 Sample : INDA303
 Misc :
 ALS Vial : 8 Sample Multiplier: 1

Integration File signal 1: autoint1.e
 Integration File signal 2: autoint2.e
 Quant Time: Jul 08 16:23:54 2020
 Quant Method : Z:\pestpcbsrv\HPCHEM1\ECD_D\Method\PD070220CLP.M
 Quant Title : GC Extractables
 QLast Update : Thu Jul 02 16:12:43 2020
 Response via : Initial Calibration
 Integrator: ChemStation

Volume Inj. : 1 µl
 Signal #1 Phase : ZB-MR2 Signal #2 Phase: ZB-MR1
 Signal #1 Info : 30M x 0.32mm x0.2 Signal #2 Info : 30M x 0.32mm x 0.50µm



Instrument :
 ECD_D
 ClientSampleId :
 INDA303