

Data Path : Z:\pestpcbsrv\HPCHEM1\ECD_D\Data\PD070822\
 Data File : PD070758.D
 Signal(s) : Signal #1: ECD1A.ch Signal #2: ECD2B.ch
 Acq On : 07 Jul 2022 11:14
 Operator : AR\AJ
 Sample : N3214-01
 Misc : PEST LOD 1PPB
 ALS Vial : 7 Sample Multiplier: 1

Instrument :
 ECD_D
 ClientSampleId :

Integration File signal 1: autoint1.e
 Integration File signal 2: autoint2.e
 Quant Time: Jul 07 12:39:09 2022
 Quant Method : Z:\pestpcbsrv\HPCHEM1\ECD_D\Method\PD070522.M
 Quant Title : GC Extractables
 QLast Update : Tue Jul 05 15:26:13 2022
 Response via : Initial Calibration
 Integrator: ChemStation

Volume Inj. : 2 µl
 Signal #1 Phase : ZB-MR2 Signal #2 Phase: ZB-MR1
 Signal #1 Info : 30M x 0.32mm x0.2 Signal #2 Info : 30M x 0.32mm x 0.50µm

	Compound	RT#1	RT#2	Resp#1	Resp#2	ng/ml	ng/ml

System Monitoring Compounds							
1)	SA Tetrachlo...	3.489	4.122	43109123	524.0E6	17.658	20.262
28)	SA Decachlor...	8.269	9.314	46933866	149.1E6	18.928	18.129
Target Compounds							
2)	A alpha-BHC	3.932	4.527	3601299	66070158	1.026	1.798 #
3)	MA gamma-BHC...	4.217	4.821	5254283	54068446	1.544	1.664
4)	MA Heptachlor	4.519	5.335	3415863	43312387	1.013	1.398 #
5)	MB Aldrin	4.768	5.647	3548369	38451789	1.075	1.364 #
6)	B beta-BHC	4.467	4.994	1374318	91439025	0.942	1.071
7)	B delta-BHC	4.673	5.219	3152745	38409733	0.964	1.343 #
8)	B Heptachlo...	5.214	6.041	3415746	43273001	1.134	1.902 #
9)	A Endosulfan I	5.555	6.406	3000263	30692173	1.072	1.499 #
10)	B gamma-Chl...	5.442	6.279	3953953	33895489	1.275	1.486
11)	B alpha-Chl...	5.501	6.351	3564823	33482608	1.172	1.520 #
12)	B 4,4'-DDE	5.667	6.507	2831254	26478523	0.974	1.295 #
13)	MA Dieldrin	5.799	6.668	3124476	28046454	1.038	1.384 #
14)	MA Endrin	6.058	6.890	2942991	16798952	1.095	1.091
15)	B Endosulfa...	6.332	7.104	3033081	20353426	1.278	1.386
17)	MA 4,4'-DDT	6.426	7.307	2720626	18931158	1.090	1.242
18)	B Endrin al...	6.502	7.231	2240164	16453554	1.205	1.437
19)	B Endosulfa...	6.715	7.454	2599792	17779520	1.070	1.296
20)	A Methoxychlor	6.978	7.766	1626568	8379591	1.138	1.222
21)	B Endrin ke...	7.209	7.935	3237049	18938914	1.217	1.476
22)	Mirex	7.397	8.390	3261000	11305785	1.490	1.416
23)	Chlordane-1	4.349	0.000	832866	0	9.863	N.D. #
24)	Chlordane-2	4.842f	5.647f	383104	38451789	3.945	44.560 #
25)	Chlordane-3	5.442	6.279	3953953	33895489	14.161	11.321
26)	Chlordane-4	5.501	6.351	3564823	33482608	15.445	9.657 #
27)	Chlordane-5	6.332	7.173	3033081	2385993	30.224	4.345 #

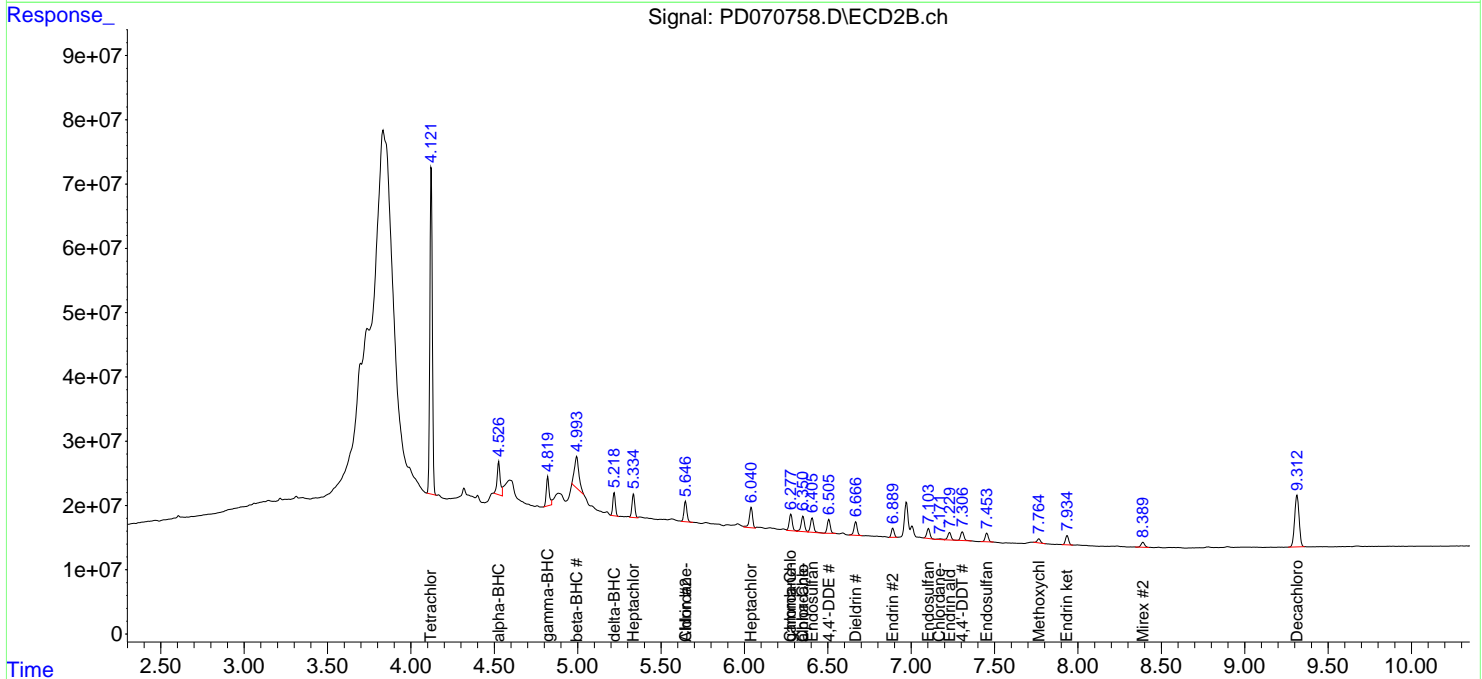
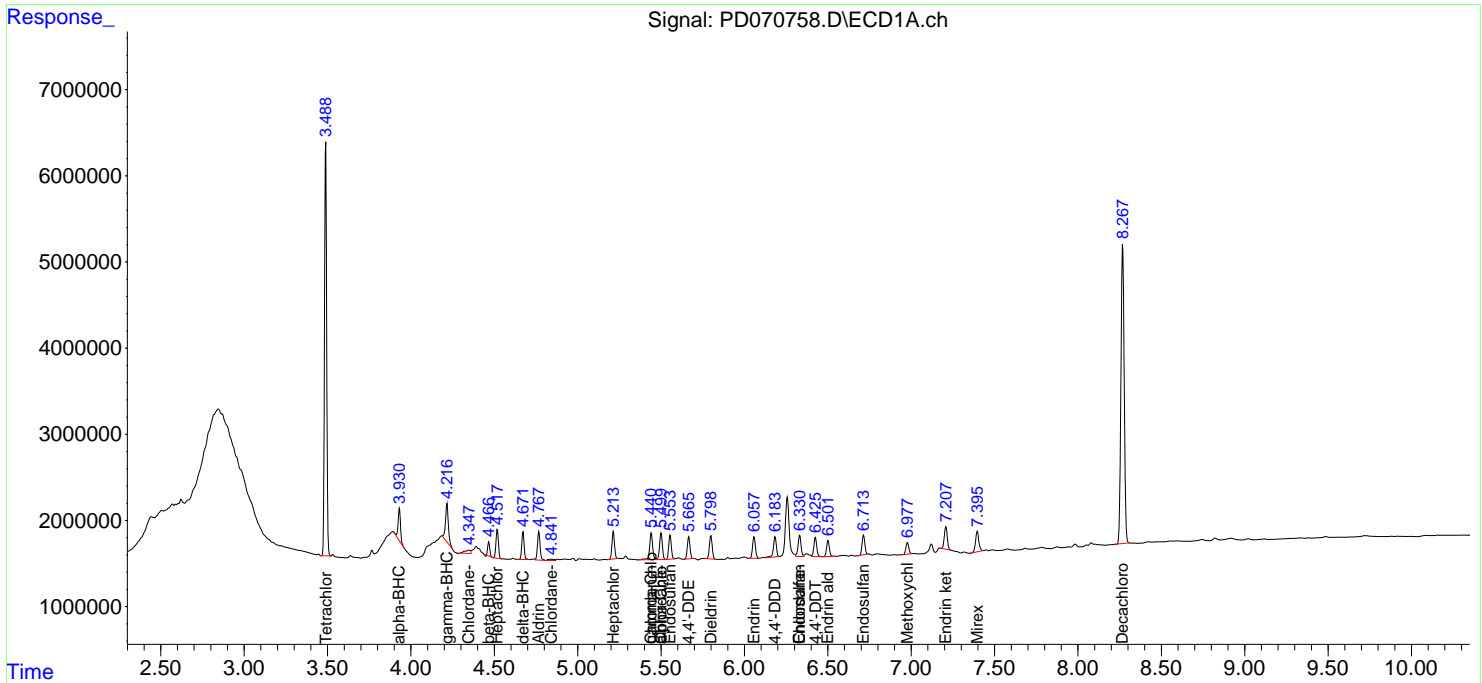
(f)=RT Delta > 1/2 Window (#)=Amounts differ by > 25% (m)=manual int.

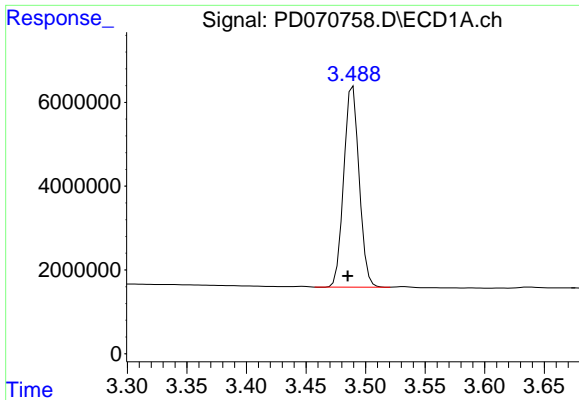
Data Path : Z:\pestpcbsrv\HPCHEM1\ECD_D\Data\PD070822\
 Data File : PD070758.D
 Signal(s) : Signal #1: ECD1A.ch Signal #2: ECD2B.ch
 Acq On : 07 Jul 2022 11:14
 Operator : AR\AJ
 Sample : N3214-01
 Misc : PEST LOD 1PPB
 ALS Vial : 7 Sample Multiplier: 1

Instrument :
 ECD_D
 ClientSampleId :

Integration File signal 1: autoint1.e
 Integration File signal 2: autoint2.e
 Quant Time: Jul 07 12:39:09 2022
 Quant Method : Z:\pestpcbsrv\HPCHEM1\ECD_D\Method\PD070522.M
 Quant Title : GC Extractables
 QLast Update : Tue Jul 05 15:26:13 2022
 Response via : Initial Calibration
 Integrator: ChemStation

Volume Inj. : 2 µl
 Signal #1 Phase : ZB-MR2 Signal #2 Phase: ZB-MR1
 Signal #1 Info : 30M x 0.32mm x0.2 Signal #2 Info : 30M x 0.32mm x 0.50µm

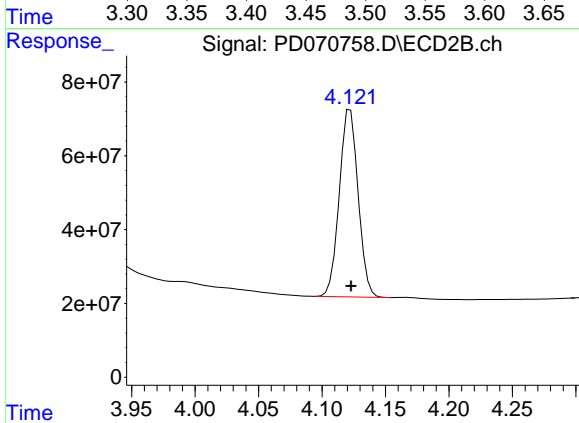




#1 Tetrachloro-m-xylene

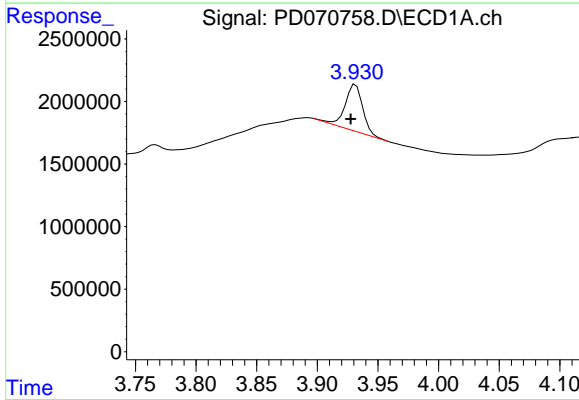
R.T.: 3.489 min
 Delta R.T.: 0.004 min
 Response: 43109123
 Conc: 17.66 ng/ml

Instrument :
 ECD_D
 ClientSampleId :



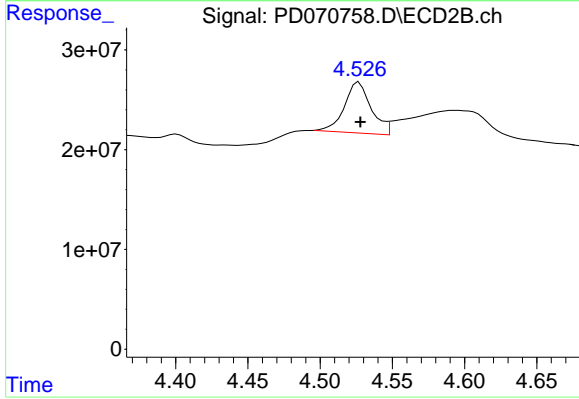
#1 Tetrachloro-m-xylene

R.T.: 4.122 min
 Delta R.T.: 0.000 min
 Response: 523993360
 Conc: 20.26 ng/ml



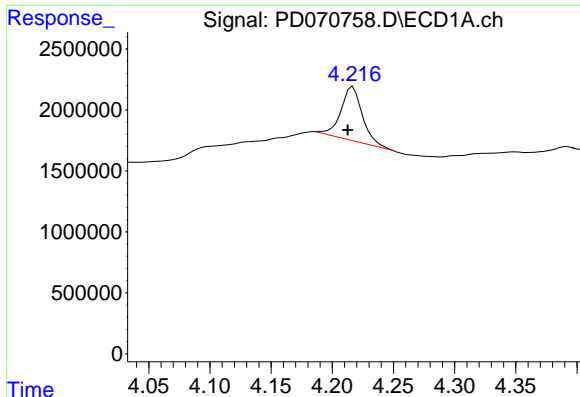
#2 alpha-BHC

R.T.: 3.932 min
 Delta R.T.: 0.004 min
 Response: 3601299
 Conc: 1.03 ng/ml



#2 alpha-BHC

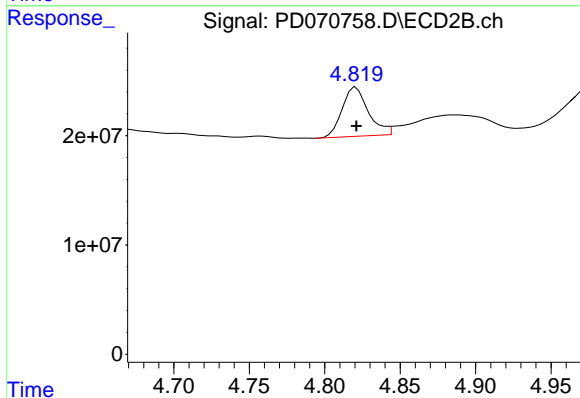
R.T.: 4.527 min
 Delta R.T.: -0.001 min
 Response: 66070158
 Conc: 1.80 ng/ml



#3 gamma-BHC (Lindane)

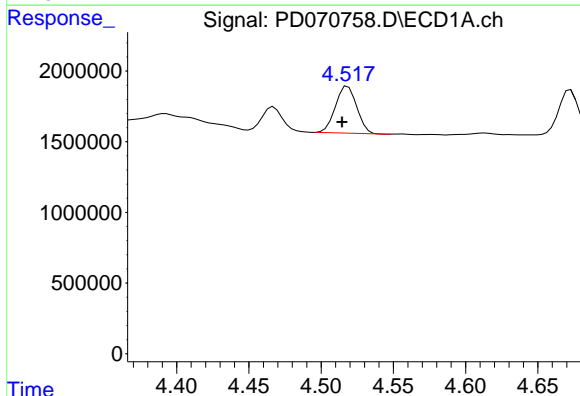
R.T.: 4.217 min
 Delta R.T.: 0.004 min
 Response: 5254283
 Conc: 1.54 ng/ml

Instrument :
 ECD_D
 ClientSampleId :



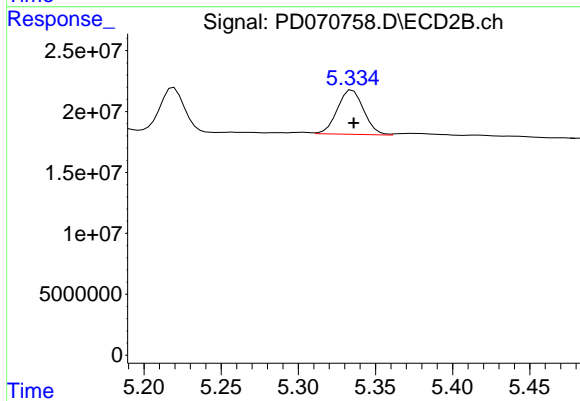
#3 gamma-BHC (Lindane)

R.T.: 4.821 min
 Delta R.T.: 0.000 min
 Response: 54068446
 Conc: 1.66 ng/ml



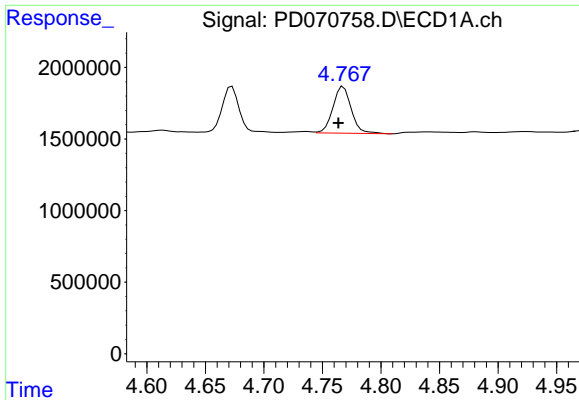
#4 Heptachlor

R.T.: 4.519 min
 Delta R.T.: 0.004 min
 Response: 3415863
 Conc: 1.01 ng/ml



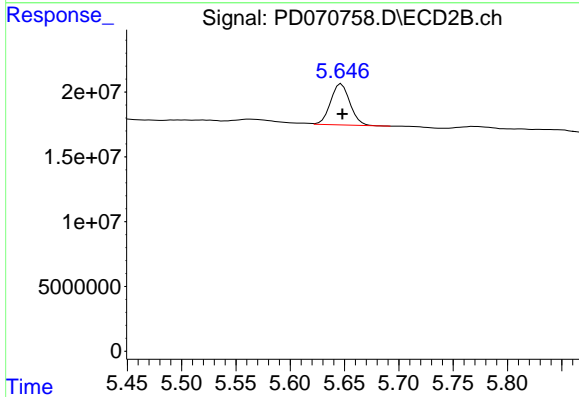
#4 Heptachlor

R.T.: 5.335 min
 Delta R.T.: -0.001 min
 Response: 43312387
 Conc: 1.40 ng/ml

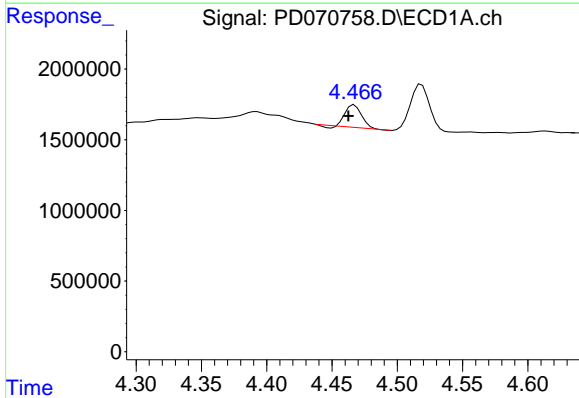


#5 Aldrin
 R.T.: 4.768 min
 Delta R.T.: 0.004 min
 Response: 3548369
 Conc: 1.07 ng/ml

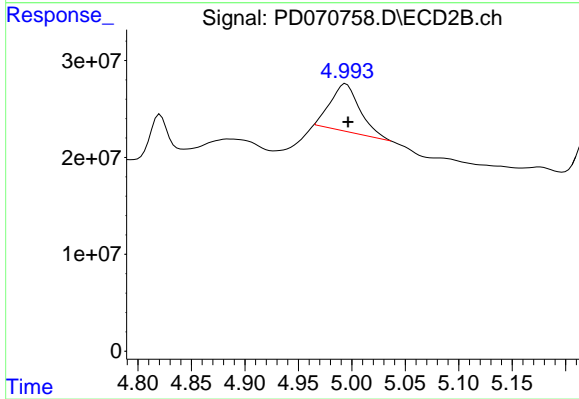
Instrument :
 ECD_D
 ClientSampleId :



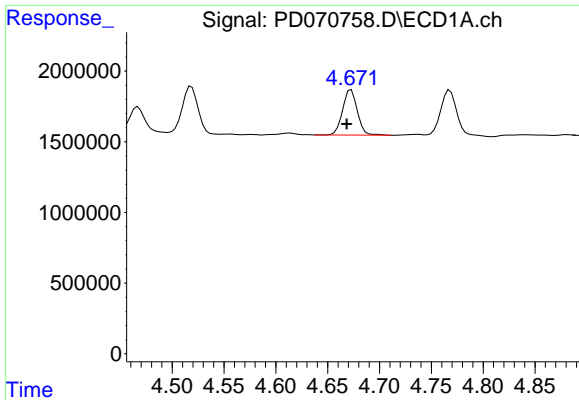
#5 Aldrin
 R.T.: 5.647 min
 Delta R.T.: 0.000 min
 Response: 38451789
 Conc: 1.36 ng/ml



#6 beta-BHC
 R.T.: 4.467 min
 Delta R.T.: 0.005 min
 Response: 1374318
 Conc: 0.94 ng/ml



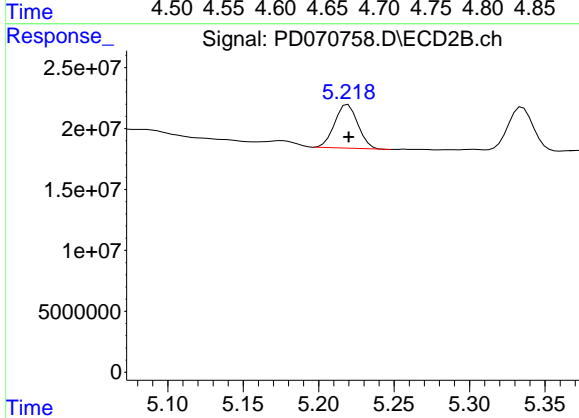
#6 beta-BHC
 R.T.: 4.994 min
 Delta R.T.: -0.002 min
 Response: 91439025
 Conc: 1.07 ng/ml



#7 delta-BHC

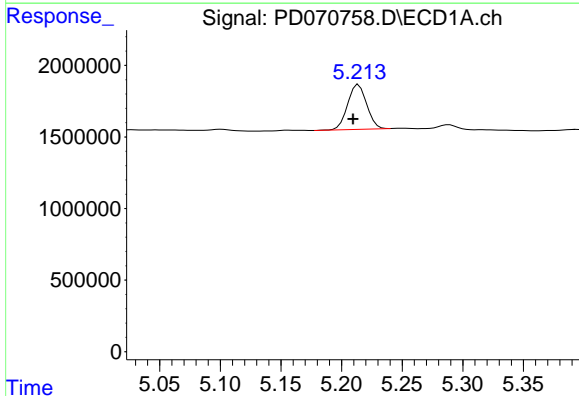
R.T.: 4.673 min
 Delta R.T.: 0.004 min
 Response: 3152745
 Conc: 0.96 ng/ml

Instrument :
 ECD_D
 ClientSampleId :



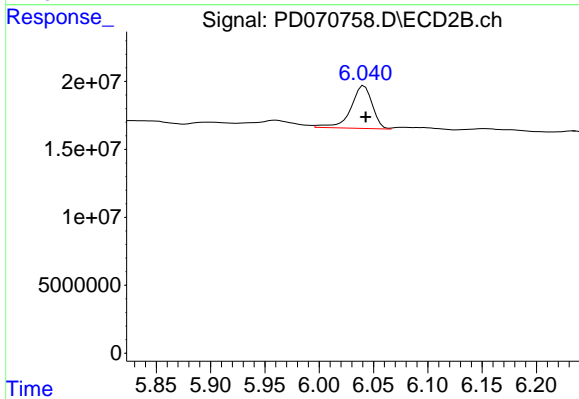
#7 delta-BHC

R.T.: 5.219 min
 Delta R.T.: 0.000 min
 Response: 38409733
 Conc: 1.34 ng/ml



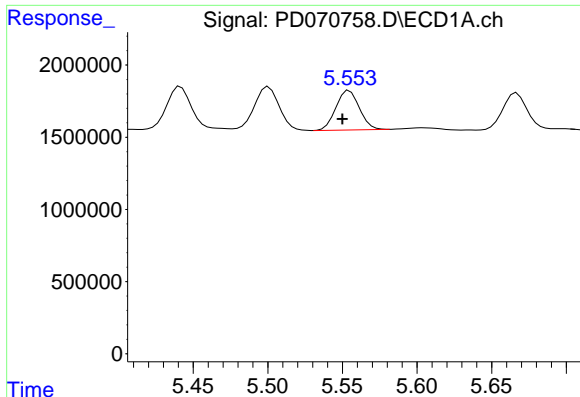
#8 Heptachlor epoxide

R.T.: 5.214 min
 Delta R.T.: 0.004 min
 Response: 3415746
 Conc: 1.13 ng/ml



#8 Heptachlor epoxide

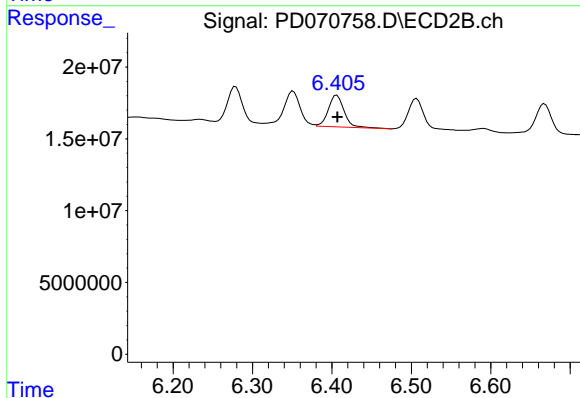
R.T.: 6.041 min
 Delta R.T.: -0.001 min
 Response: 43273001
 Conc: 1.90 ng/ml



#9 Endosulfan I

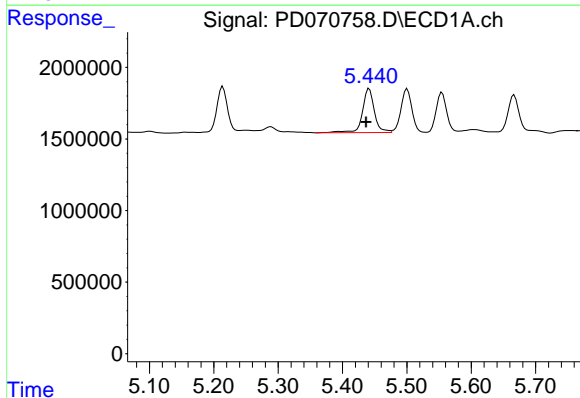
R.T.: 5.555 min
 Delta R.T.: 0.005 min
 Response: 3000263
 Conc: 1.07 ng/ml

Instrument :
 ECD_D
 ClientSampleId :



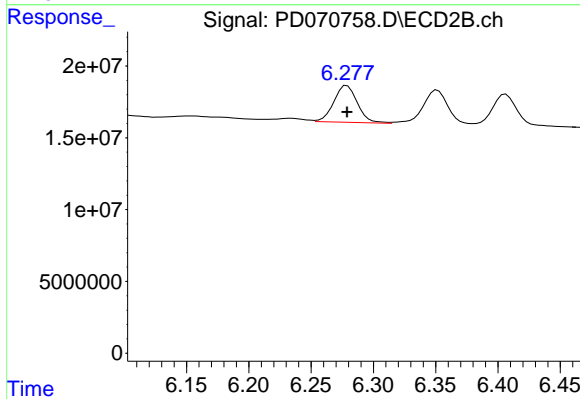
#9 Endosulfan I

R.T.: 6.406 min
 Delta R.T.: 0.000 min
 Response: 30692173
 Conc: 1.50 ng/ml



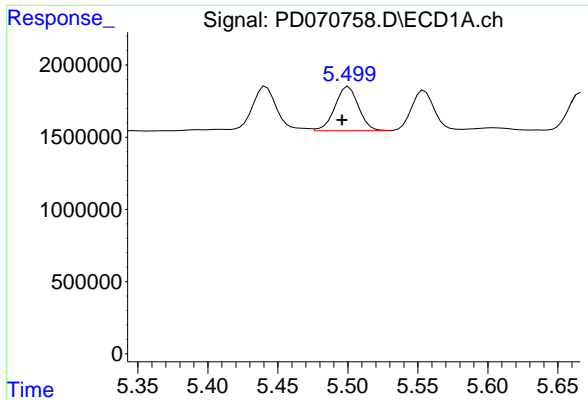
#10 gamma-Chlordane

R.T.: 5.442 min
 Delta R.T.: 0.005 min
 Response: 3953953
 Conc: 1.27 ng/ml



#10 gamma-Chlordane

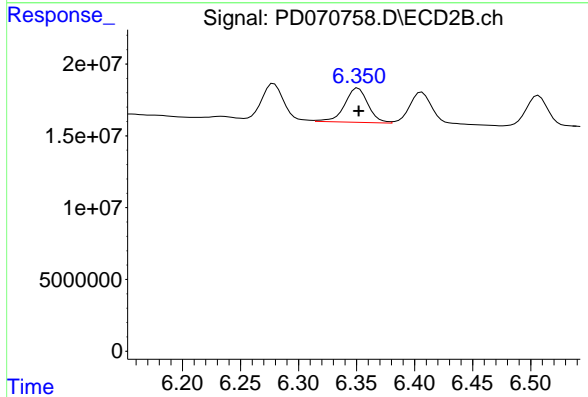
R.T.: 6.279 min
 Delta R.T.: 0.000 min
 Response: 33895489
 Conc: 1.49 ng/ml



#11 alpha-Chlordane

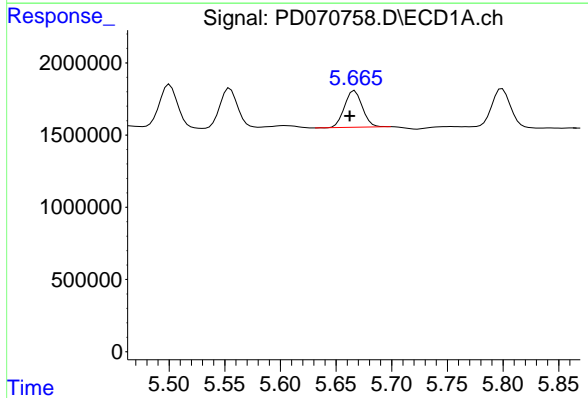
R.T.: 5.501 min
 Delta R.T.: 0.005 min
 Response: 3564823
 Conc: 1.17 ng/ml

Instrument :
 ECD_D
 ClientSampleId :



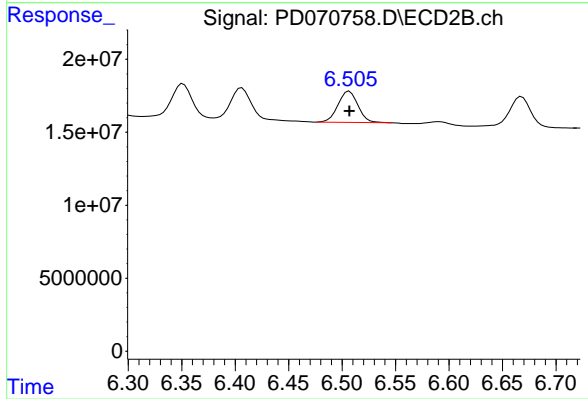
#11 alpha-Chlordane

R.T.: 6.351 min
 Delta R.T.: 0.000 min
 Response: 33482608
 Conc: 1.52 ng/ml



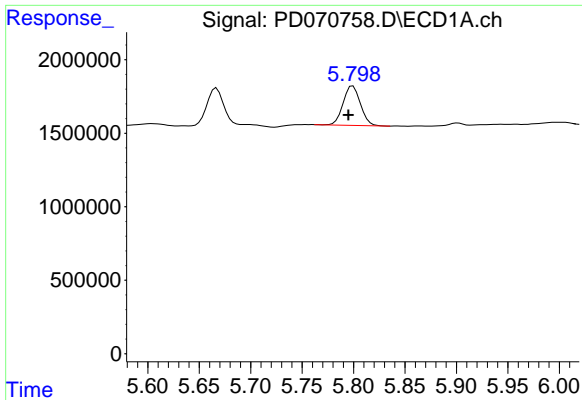
#12 4,4'-DDE

R.T.: 5.667 min
 Delta R.T.: 0.005 min
 Response: 2831254
 Conc: 0.97 ng/ml



#12 4,4'-DDE

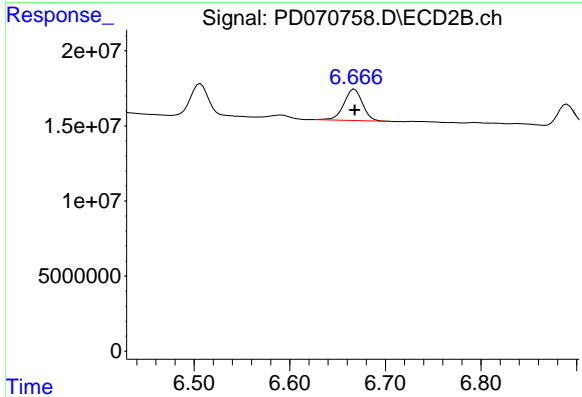
R.T.: 6.507 min
 Delta R.T.: 0.000 min
 Response: 26478523
 Conc: 1.29 ng/ml



#13 Dieldrin

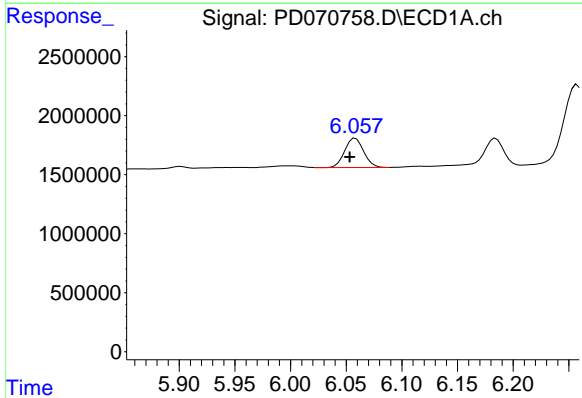
R.T.: 5.799 min
 Delta R.T.: 0.004 min
 Response: 3124476
 Conc: 1.04 ng/ml

Instrument :
 ECD_D
 ClientSampleId :



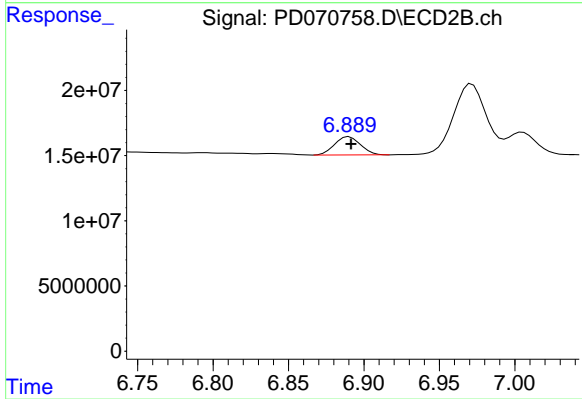
#13 Dieldrin

R.T.: 6.668 min
 Delta R.T.: 0.000 min
 Response: 28046454
 Conc: 1.38 ng/ml



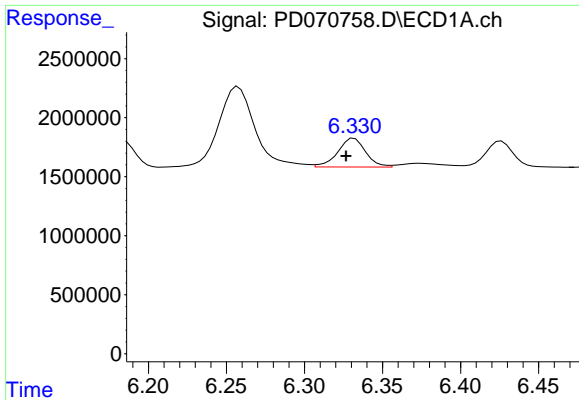
#14 Endrin

R.T.: 6.058 min
 Delta R.T.: 0.005 min
 Response: 2942991
 Conc: 1.09 ng/ml



#14 Endrin

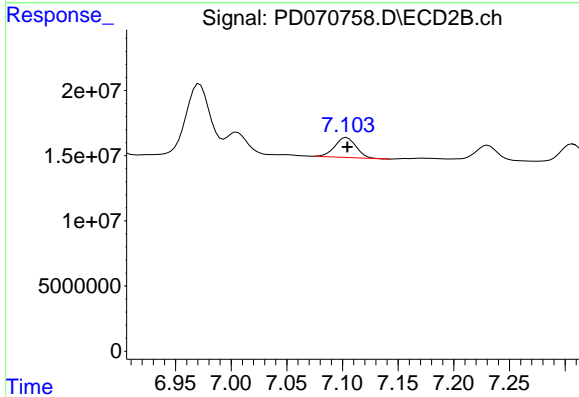
R.T.: 6.890 min
 Delta R.T.: -0.001 min
 Response: 16798952
 Conc: 1.09 ng/ml



#15 Endosulfan II

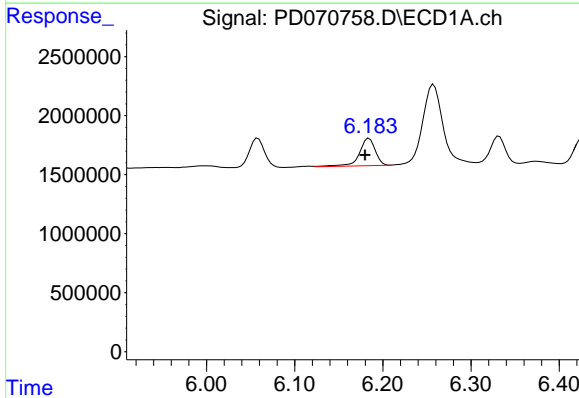
R.T.: 6.332 min
 Delta R.T.: 0.005 min
 Response: 3033081
 Conc: 1.28 ng/ml

Instrument :
 ECD_D
 ClientSampleId :



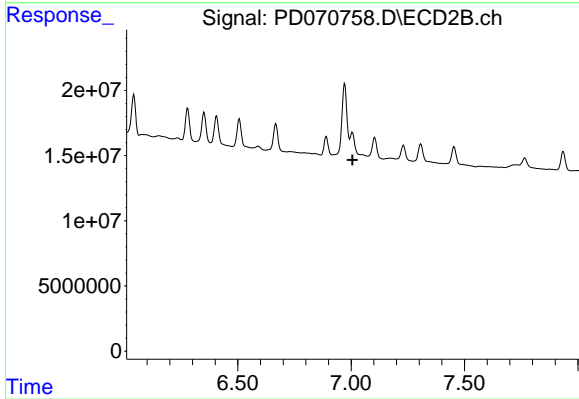
#15 Endosulfan II

R.T.: 7.104 min
 Delta R.T.: 0.000 min
 Response: 20353426
 Conc: 1.39 ng/ml



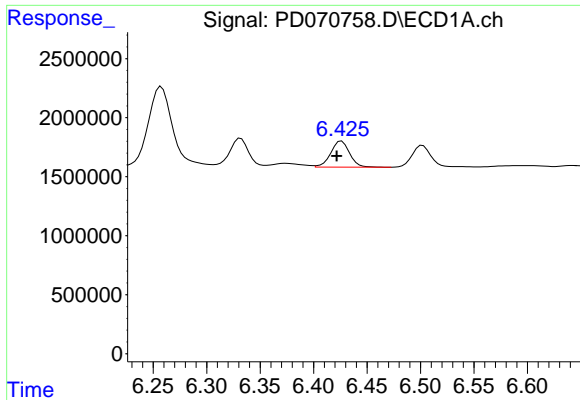
#16 4,4'-DDD

R.T.: 6.185 min
 Delta R.T.: 0.005 min
 Response: 2903346
 Conc: 1.19 ng/ml



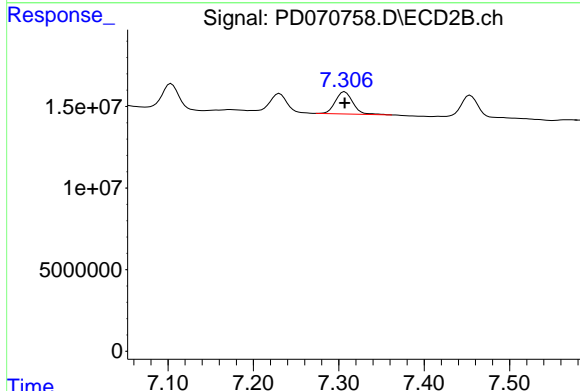
#16 4,4'-DDD

R.T.: 7.005 min
 Delta R.T.: -0.001 min
 Response: -37963679
 Conc: N.D.

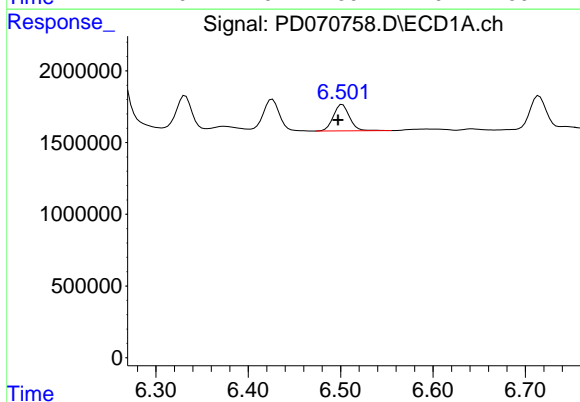


#17 4,4'-DDT
 R.T.: 6.426 min
 Delta R.T.: 0.004 min
 Response: 2720626
 Conc: 1.09 ng/ml

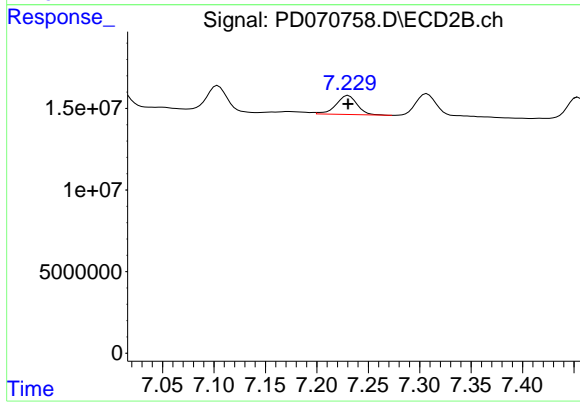
Instrument :
 ECD_D
 ClientSampleId :



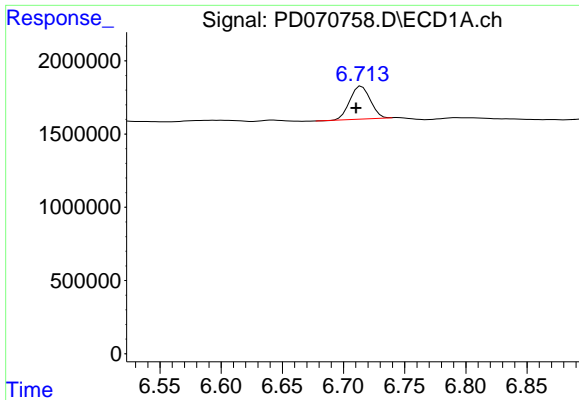
#17 4,4'-DDT
 R.T.: 7.307 min
 Delta R.T.: 0.000 min
 Response: 18931158
 Conc: 1.24 ng/ml



#18 Endrin aldehyde
 R.T.: 6.502 min
 Delta R.T.: 0.005 min
 Response: 2240164
 Conc: 1.21 ng/ml

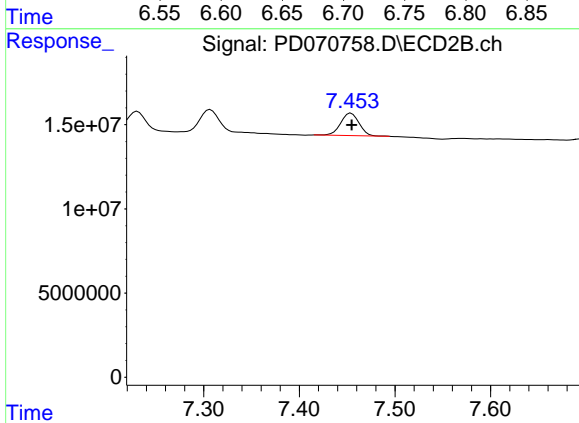


#18 Endrin aldehyde
 R.T.: 7.231 min
 Delta R.T.: 0.000 min
 Response: 16453554
 Conc: 1.44 ng/ml

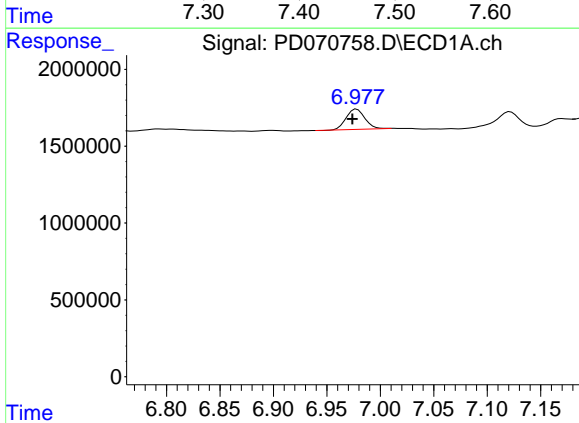


#19 Endosulfan Sulfate
 R.T.: 6.715 min
 Delta R.T.: 0.004 min
 Response: 2599792
 Conc: 1.07 ng/ml

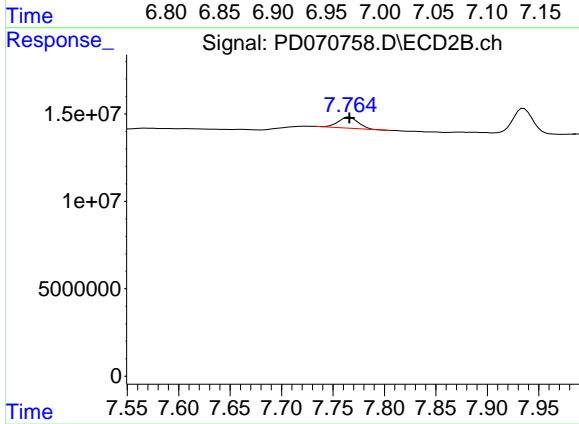
Instrument :
 ECD_D
 ClientSampleId :



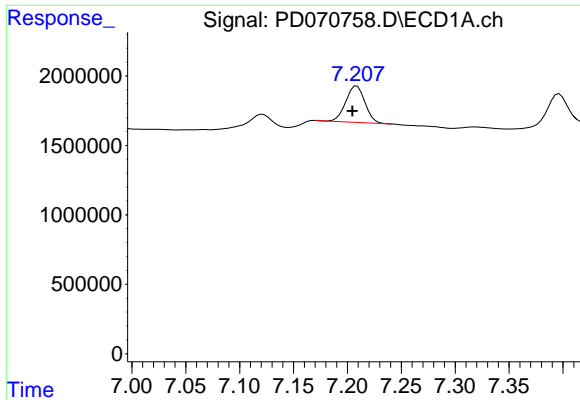
#19 Endosulfan Sulfate
 R.T.: 7.454 min
 Delta R.T.: 0.000 min
 Response: 17779520
 Conc: 1.30 ng/ml



#20 Methoxychlor
 R.T.: 6.978 min
 Delta R.T.: 0.004 min
 Response: 1626568
 Conc: 1.14 ng/ml



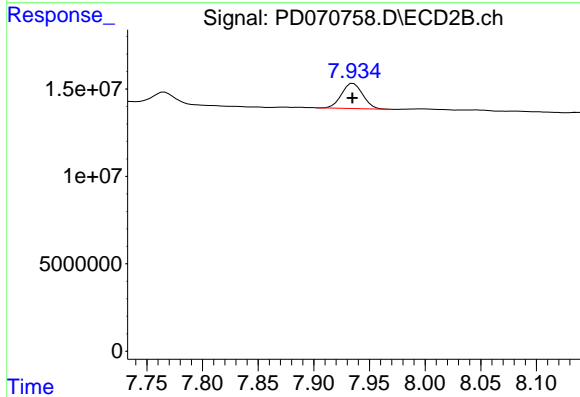
#20 Methoxychlor
 R.T.: 7.766 min
 Delta R.T.: 0.000 min
 Response: 8379591
 Conc: 1.22 ng/ml



#21 Endrin ketone

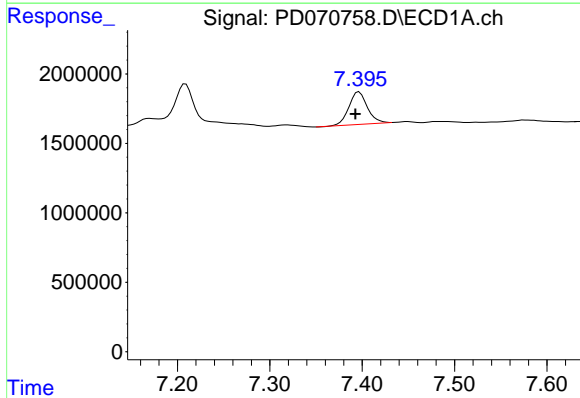
R.T.: 7.209 min
 Delta R.T.: 0.004 min
 Response: 3237049
 Conc: 1.22 ng/ml

Instrument :
 ECD_D
 ClientSampleId :



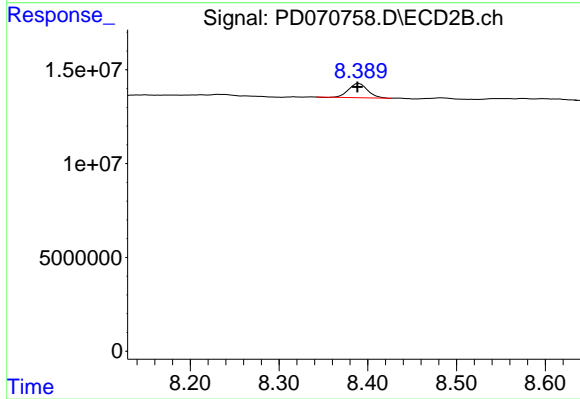
#21 Endrin ketone

R.T.: 7.935 min
 Delta R.T.: 0.000 min
 Response: 18938914
 Conc: 1.48 ng/ml



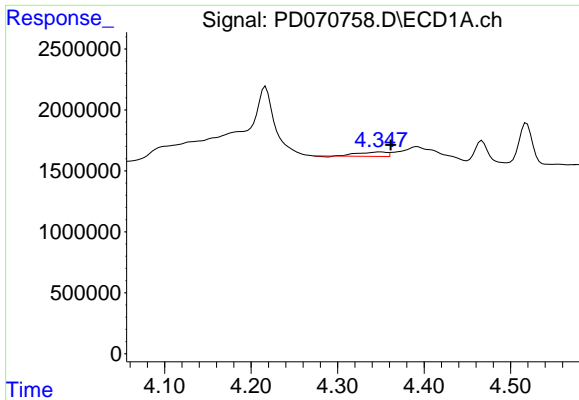
#22 Mirex

R.T.: 7.397 min
 Delta R.T.: 0.004 min
 Response: 3261000
 Conc: 1.49 ng/ml



#22 Mirex

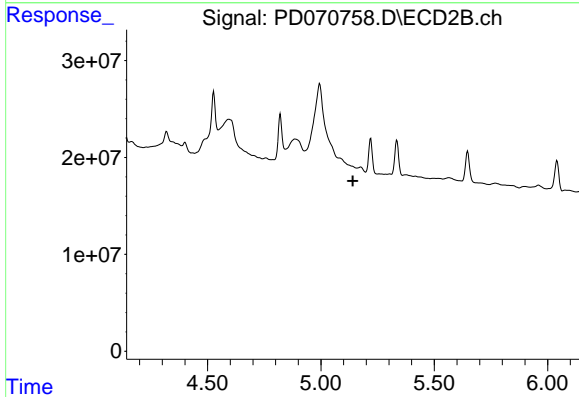
R.T.: 8.390 min
 Delta R.T.: 0.002 min
 Response: 11305785
 Conc: 1.42 ng/ml



#23 Chlordane-1

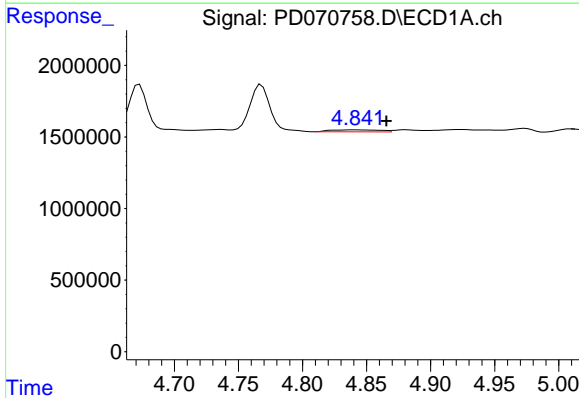
R.T.: 4.349 min
 Delta R.T.: -0.013 min
 Response: 832866
 Conc: 9.86 ng/ml

Instrument :
 ECD_D
 ClientSampleId :



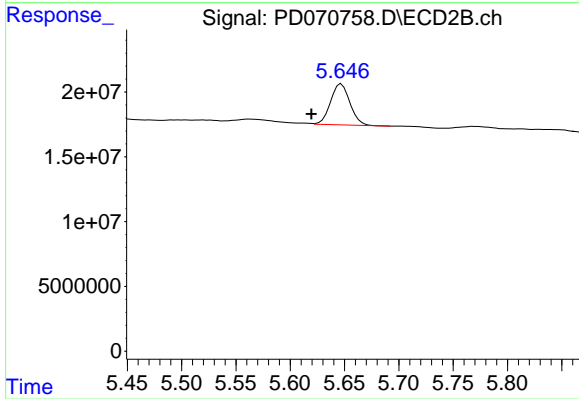
#23 Chlordane-1

R.T.: 0.000 min
 Exp R.T. : 5.141 min
 Response: 0
 Conc: N.D.



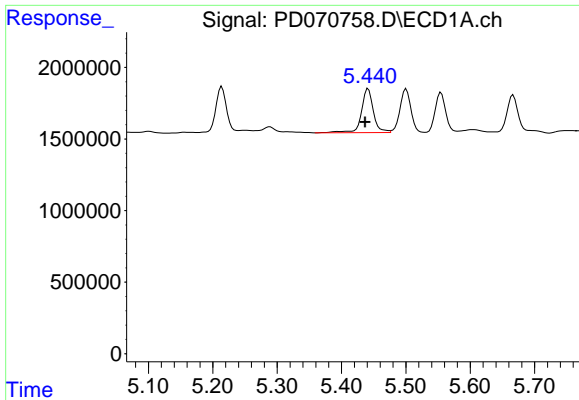
#24 Chlordane-2

R.T.: 4.842 min
 Delta R.T.: -0.023 min
 Response: 383104
 Conc: 3.94 ng/ml



#24 Chlordane-2

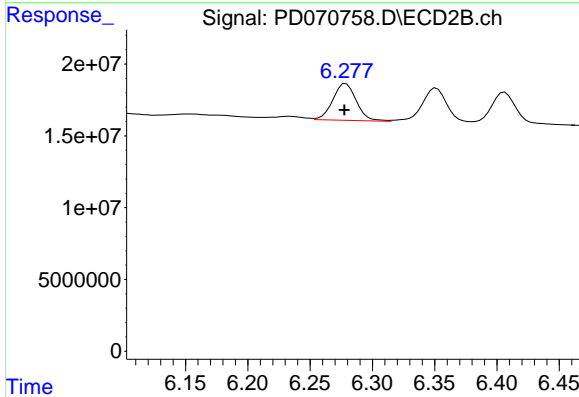
R.T.: 5.647 min
 Delta R.T.: 0.028 min
 Response: 38451789
 Conc: 44.56 ng/ml



#25 Chlordane-3

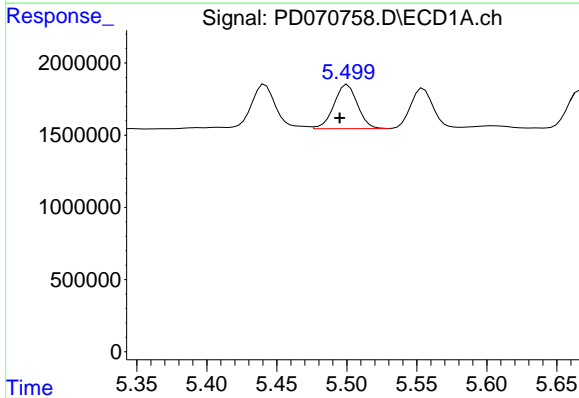
R.T.: 5.442 min
 Delta R.T.: 0.005 min
 Response: 3953953
 Conc: 14.16 ng/ml

Instrument :
 ECD_D
 ClientSampleId :



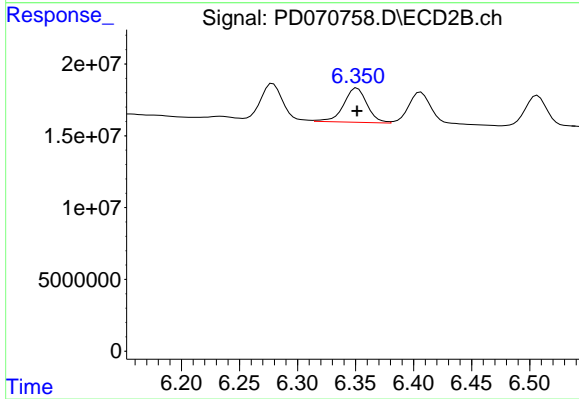
#25 Chlordane-3

R.T.: 6.279 min
 Delta R.T.: 0.001 min
 Response: 33895489
 Conc: 11.32 ng/ml



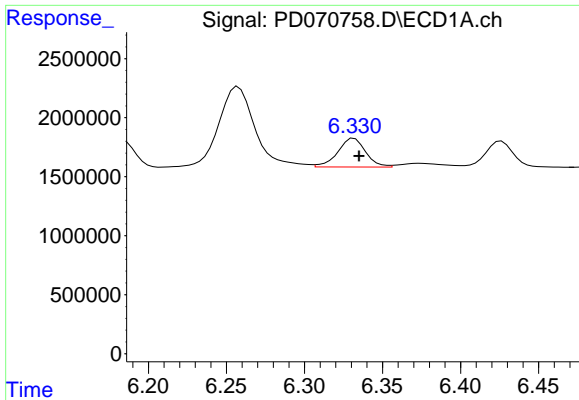
#26 Chlordane-4

R.T.: 5.501 min
 Delta R.T.: 0.006 min
 Response: 3564823
 Conc: 15.45 ng/ml



#26 Chlordane-4

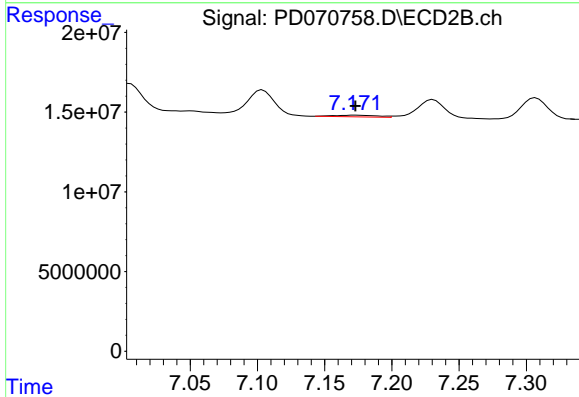
R.T.: 6.351 min
 Delta R.T.: 0.000 min
 Response: 33482608
 Conc: 9.66 ng/ml



#27 Chlordane-5

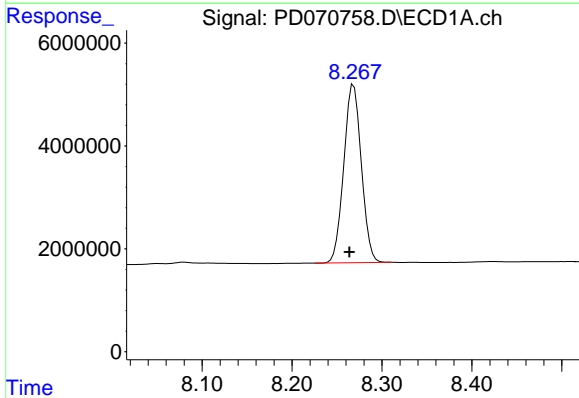
R.T.: 6.332 min
 Delta R.T.: -0.003 min
 Response: 3033081
 Conc: 30.22 ng/ml

Instrument :
 ECD_D
 ClientSampleId :



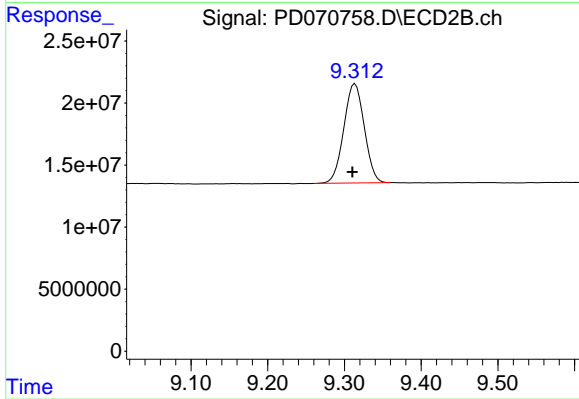
#27 Chlordane-5

R.T.: 7.173 min
 Delta R.T.: 0.000 min
 Response: 2385993
 Conc: 4.34 ng/ml



#28 Decachlorobiphenyl

R.T.: 8.269 min
 Delta R.T.: 0.005 min
 Response: 46933866
 Conc: 18.93 ng/ml



#28 Decachlorobiphenyl

R.T.: 9.314 min
 Delta R.T.: 0.003 min
 Response: 149143821
 Conc: 18.13 ng/ml