

Data Path : Z:\pestpcbsrv\HPCHEM1\ECD\_D\Data\PD070822\  
 Data File : PD070754.D  
 Signal(s) : Signal #1: ECD1A.ch Signal #2: ECD2B.ch  
 Acq On : 07 Jul 2022 09:11  
 Operator : AR\AJ  
 Sample : PEM  
 Misc :  
 ALS Vial : 3 Sample Multiplier: 1

**Instrument :**  
 ECD\_D  
**ClientSampleId :**  
 PEM

**Manual Integrations**  
**APPROVED**

Reviewed By :Abdul Mirza 07/08/2022  
 Supervised By :Ankita Jodhani 07/08/2022

Integration File signal 1: autoint1.e  
 Integration File signal 2: autoint2.e  
 Quant Time: Jul 07 12:37:05 2022  
 Quant Method : Z:\pestpcbsrv\HPCHEM1\ECD\_D\Method\PD070522.M  
 Quant Title : GC Extractables  
 QLast Update : Tue Jul 05 15:26:13 2022  
 Response via : Initial Calibration  
 Integrator: ChemStation

Volume Inj. : 2 µl  
 Signal #1 Phase : ZB-MR2 Signal #2 Phase: ZB-MR1  
 Signal #1 Info : 30M x 0.32mm x0.2 Signal #2 Info : 30M x 0.32mm x 0.50µm

Compound	RT#1	RT#2	Resp#1	Resp#2	ng/ml	ng/ml
-----						
System Monitoring Compounds						
1) SA Tetrachlo...	3.485	4.124	49455858	580.4E6	20.258	22.443
28) SA Decachlor...	8.264	9.312	49891318	172.2E6	20.121	20.926
Target Compounds						
2) A alpha-BHC	3.928	4.528	37291703	473.6E6	10.620	12.886
3) MA gamma-BHC...	4.213	4.821	38118755	445.7E6	11.202	13.719
6) B beta-BHC	4.462	4.997	15751965	224.0E6	10.794	11.818
14) MA Endrin	6.053	6.892	133.7E6	836.4E6	49.738	54.335
16) A 4,4'-DDD	6.179	7.004	4504547	34319555	1.846	2.425m#
17) MA 4,4'-DDT	6.422	7.307	278.6E6	1582.5E6	111.591	103.862
18) B Endrin al...	6.496	7.230	4168254	30329430	2.242	2.649
20) A Methoxychlor	6.973	7.766	359.5E6	1732.2E6	251.486	252.585
21) B Endrin ke...	7.203	7.934	10224610	44933942	3.844	3.502m
-----						

(f)=RT Delta > 1/2 Window (#)=Amounts differ by > 25% (m)=manual int.

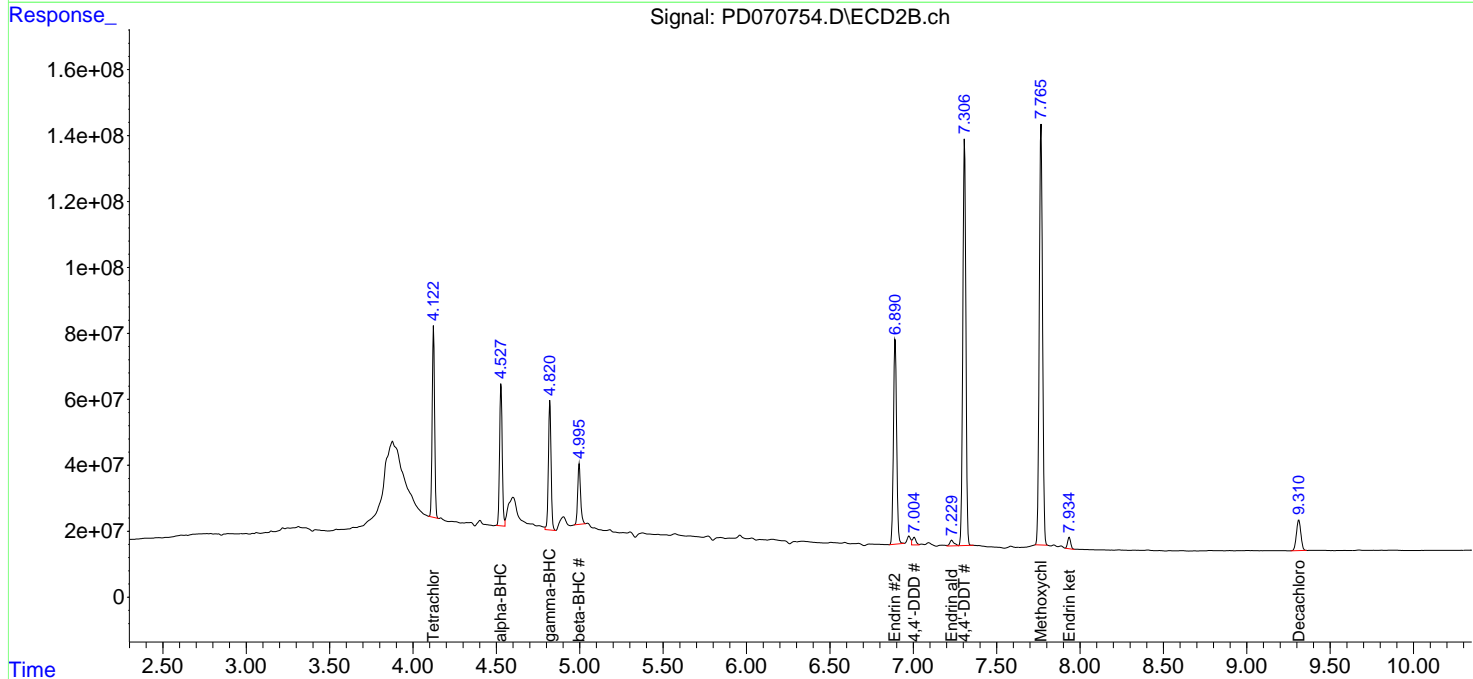
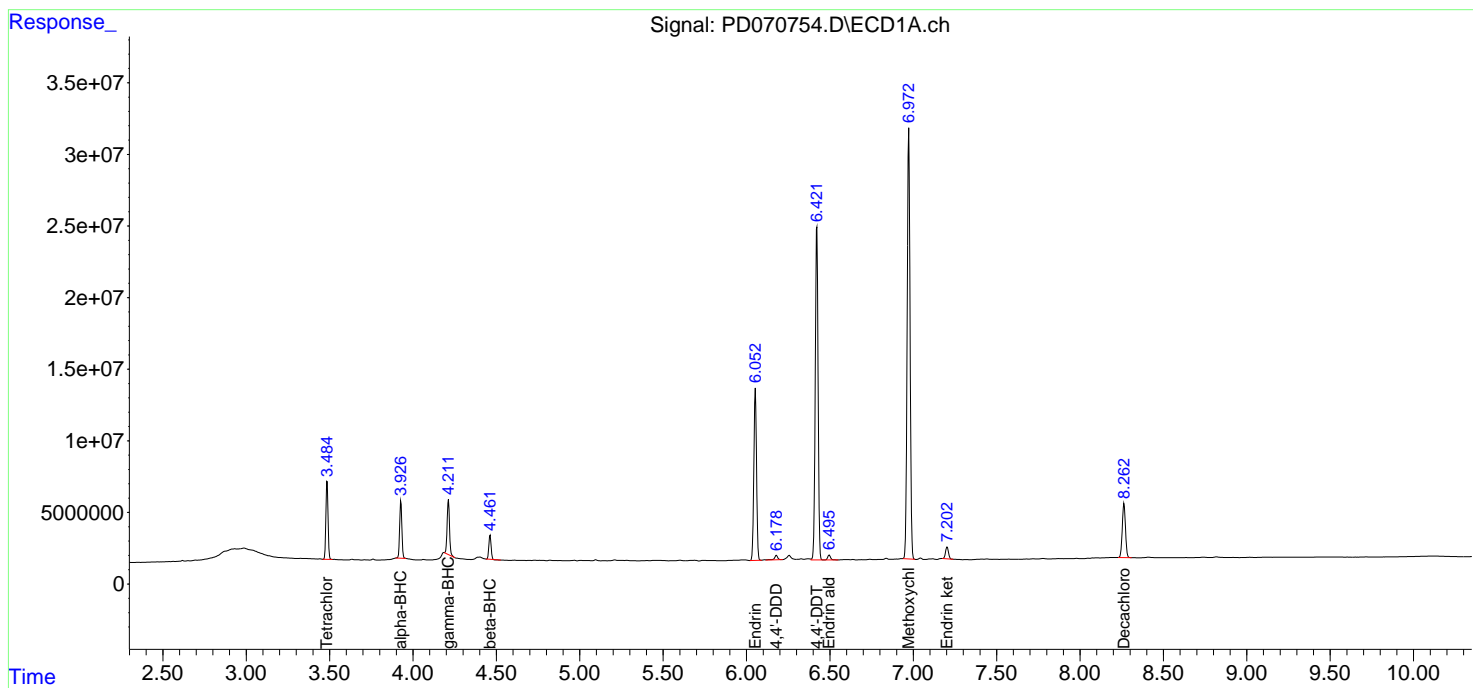
Data Path : Z:\pestpcbsrv\HPCHEM1\ECD\_D\Data\PD070822\  
 Data File : PD070754.D  
 Signal(s) : Signal #1: ECD1A.ch Signal #2: ECD2B.ch  
 Acq On : 07 Jul 2022 09:11  
 Operator : AR\AJ  
 Sample : PEM  
 Misc :  
 ALS Vial : 3 Sample Multiplier: 1

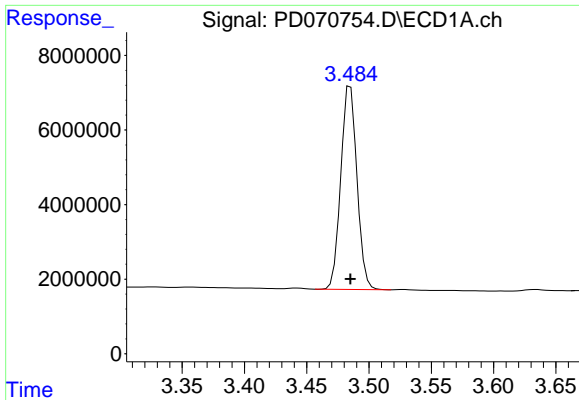
**Instrument :**  
 ECD\_D  
**ClientSampleId :**  
 PEM

**Manual Integrations**  
**APPROVED**  
 Reviewed By :Abdul Mirza 07/08/2022  
 Supervised By :Ankita Jodhani 07/08/2022

Integration File signal 1: autoint1.e  
 Integration File signal 2: autoint2.e  
 Quant Time: Jul 07 12:37:05 2022  
 Quant Method : Z:\pestpcbsrv\HPCHEM1\ECD\_D\Method\PD070522.M  
 Quant Title : GC Extractables  
 QLast Update : Tue Jul 05 15:26:13 2022  
 Response via : Initial Calibration  
 Integrator: ChemStation

Volume Inj. : 2 µl  
 Signal #1 Phase : ZB-MR2 Signal #2 Phase: ZB-MR1  
 Signal #1 Info : 30M x 0.32mm x0.2 Signal #2 Info : 30M x 0.32mm x 0.50µm



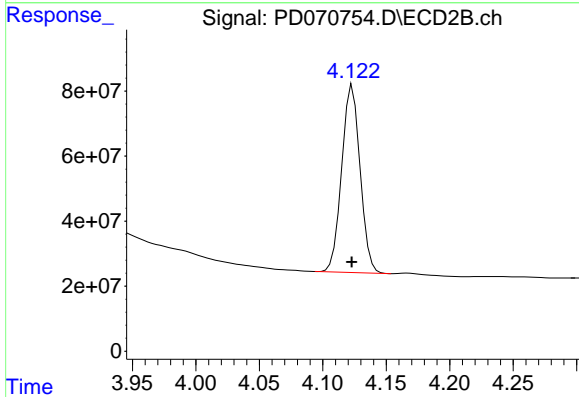


#1 Tetrachloro-m-xylene  
 R.T.: 3.485 min  
 Delta R.T.: 0.000 min  
 Response: 49455858  
 Conc: 20.26 ng/ml

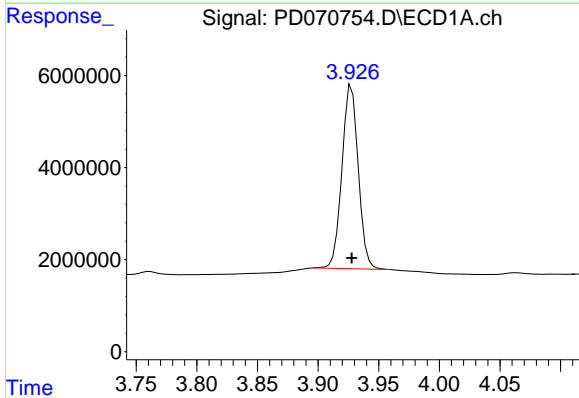
Instrument :  
 ECD\_D  
 ClientSampleId :  
 PEM

Manual Integrations  
 APPROVED

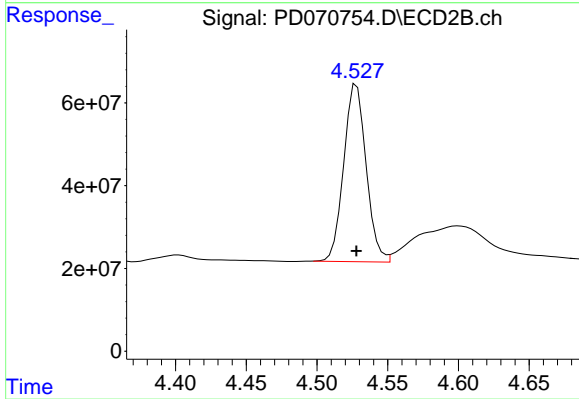
Reviewed By :Abdul Mirza 07/08/2022  
 Supervised By :Ankita Jodhani 07/08/2022



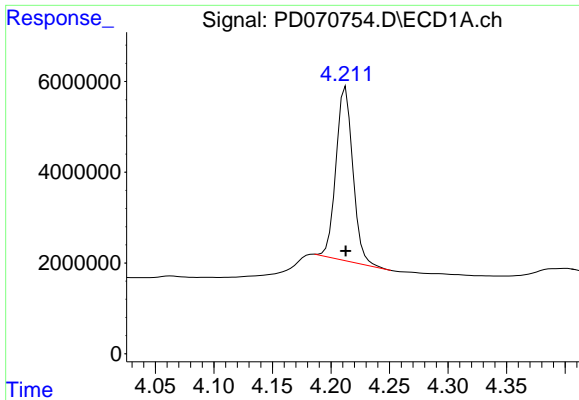
#1 Tetrachloro-m-xylene  
 R.T.: 4.124 min  
 Delta R.T.: 0.000 min  
 Response: 580407769  
 Conc: 22.44 ng/ml



#2 alpha-BHC  
 R.T.: 3.928 min  
 Delta R.T.: 0.000 min  
 Response: 37291703  
 Conc: 10.62 ng/ml



#2 alpha-BHC  
 R.T.: 4.528 min  
 Delta R.T.: 0.000 min  
 Response: 473559820  
 Conc: 12.89 ng/ml

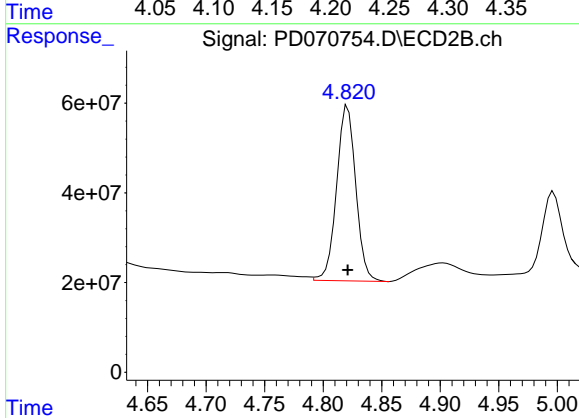


#3 gamma-BHC (Lindane)  
 R.T.: 4.213 min  
 Delta R.T.: 0.000 min  
 Response: 38118755  
 Conc: 11.20 ng/ml

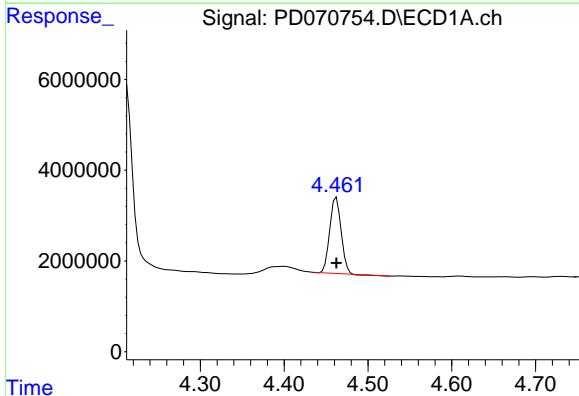
Instrument :  
 ECD\_D  
 ClientSampleId :  
 PEM

Manual Integrations  
 APPROVED

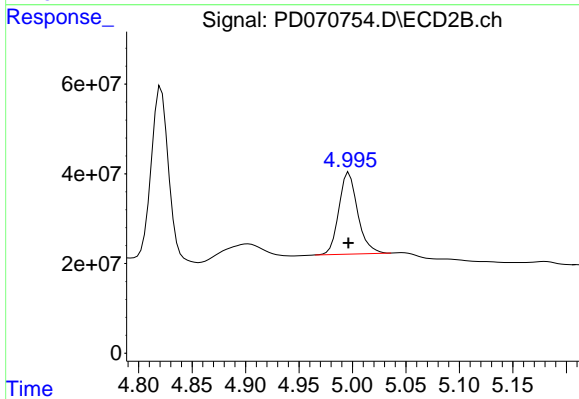
Reviewed By :Abdul Mirza 07/08/2022  
 Supervised By :Ankita Jodhani 07/08/2022



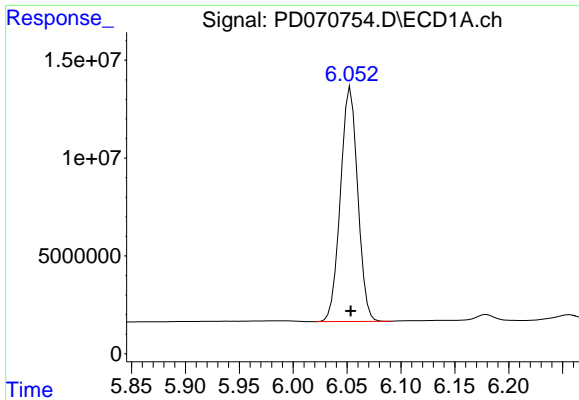
#3 gamma-BHC (Lindane)  
 R.T.: 4.821 min  
 Delta R.T.: 0.000 min  
 Response: 445739277  
 Conc: 13.72 ng/ml



#6 beta-BHC  
 R.T.: 4.462 min  
 Delta R.T.: 0.000 min  
 Response: 15751965  
 Conc: 10.79 ng/ml



#6 beta-BHC  
 R.T.: 4.997 min  
 Delta R.T.: 0.000 min  
 Response: 224035732  
 Conc: 11.82 ng/ml

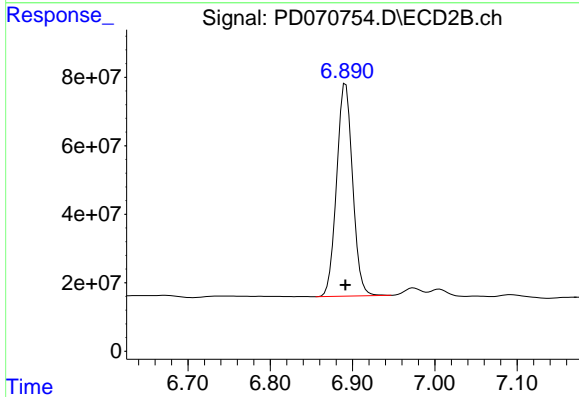


#14 Endrin  
 R.T.: 6.053 min  
 Delta R.T.: 0.000 min  
 Response: 133715148  
 Conc: 49.74 ng/ml

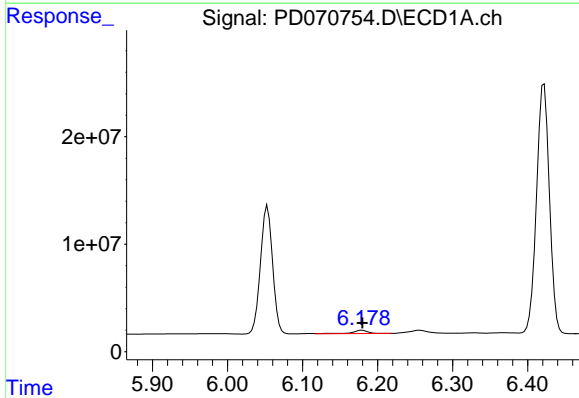
Instrument :  
 ECD\_D  
 ClientSampleId :  
 PEM

Manual Integrations  
 APPROVED

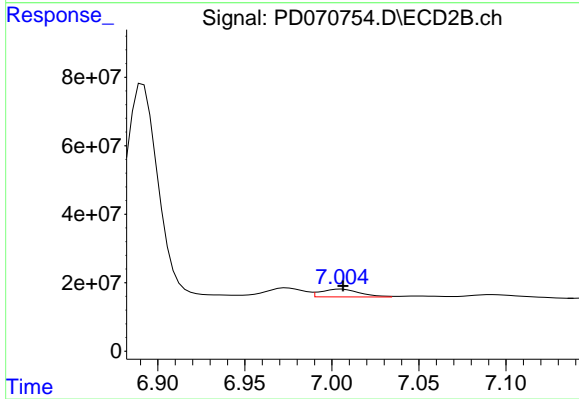
Reviewed By :Abdul Mirza 07/08/2022  
 Supervised By :Ankita Jodhani 07/08/2022



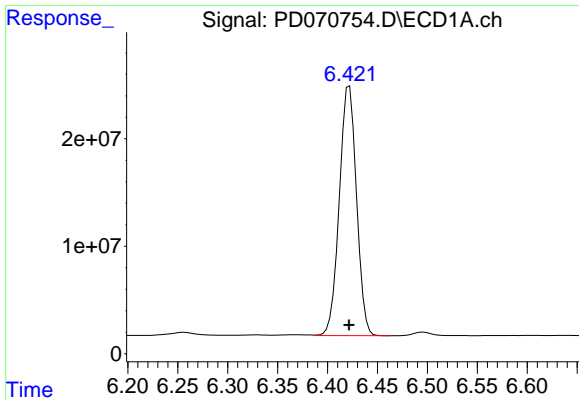
#14 Endrin  
 R.T.: 6.892 min  
 Delta R.T.: 0.000 min  
 Response: 836407001  
 Conc: 54.34 ng/ml



#16 4,4'-DDD  
 R.T.: 6.179 min  
 Delta R.T.: 0.000 min  
 Response: 4504547  
 Conc: 1.85 ng/ml



#16 4,4'-DDD  
 R.T.: 7.004 min  
 Delta R.T.: -0.002 min  
 Response: 34319555  
 Conc: 2.43 ng/ml m

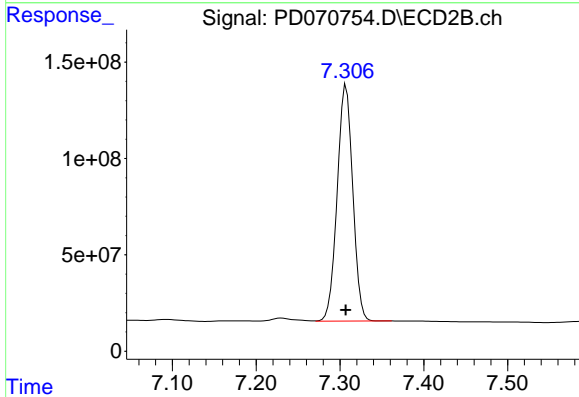


#17 4,4'-DDT  
 R.T.: 6.422 min  
 Delta R.T.: 0.000 min  
 Response: 278613559  
 Conc: 111.59 ng/ml

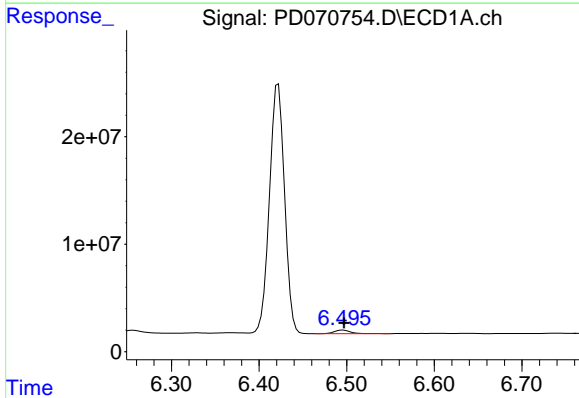
Instrument :  
 ECD\_D  
 ClientSampleId :  
 PEM

Manual Integrations  
 APPROVED

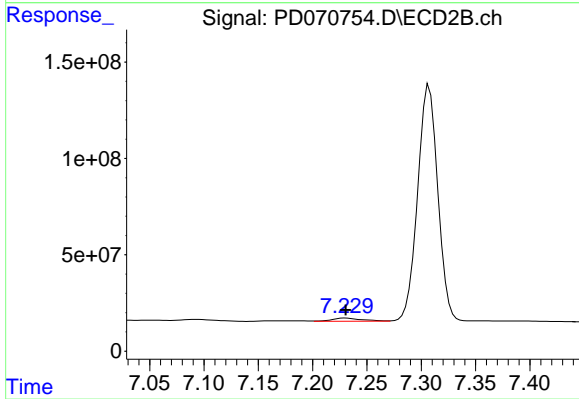
Reviewed By :Abdul Mirza 07/08/2022  
 Supervised By :Ankita Jodhani 07/08/2022



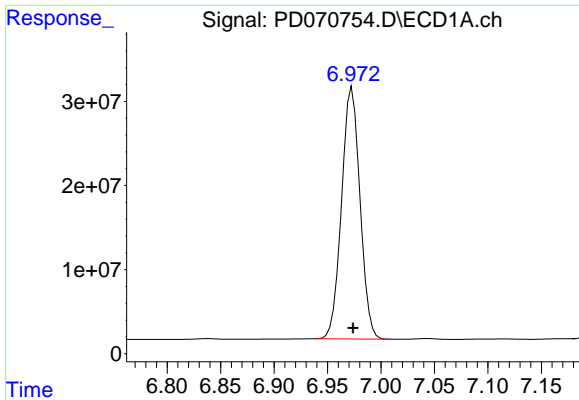
#17 4,4'-DDT  
 R.T.: 7.307 min  
 Delta R.T.: 0.000 min  
 Response: 1582529643  
 Conc: 103.86 ng/ml



#18 Endrin aldehyde  
 R.T.: 6.496 min  
 Delta R.T.: -0.001 min  
 Response: 4168254  
 Conc: 2.24 ng/ml



#18 Endrin aldehyde  
 R.T.: 7.230 min  
 Delta R.T.: 0.000 min  
 Response: 30329430  
 Conc: 2.65 ng/ml



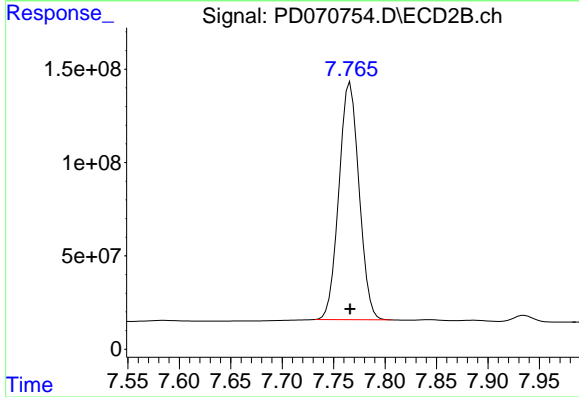
#20 Methoxychlor

R.T.: 6.973 min  
 Delta R.T.: 0.000 min  
 Response: 359458162  
 Conc: 251.49 ng/ml

Instrument :  
 ECD\_D  
 ClientSampleId :  
 PEM

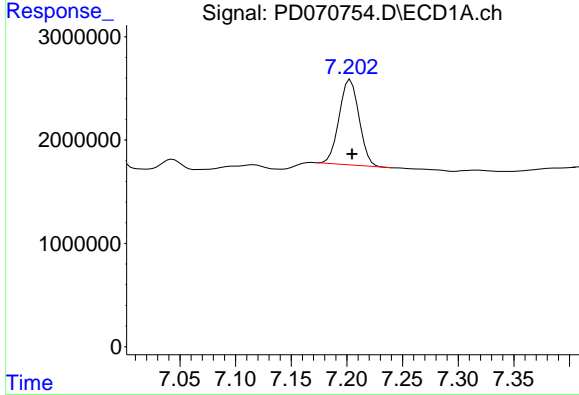
Manual Integrations  
 APPROVED

Reviewed By :Abdul Mirza 07/08/2022  
 Supervised By :Ankita Jodhani 07/08/2022



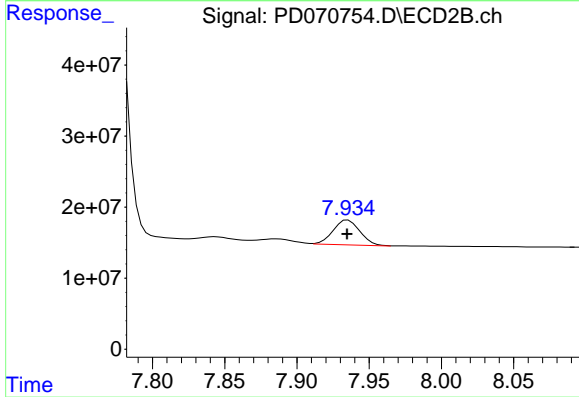
#20 Methoxychlor

R.T.: 7.766 min  
 Delta R.T.: 0.000 min  
 Response: 1732243841  
 Conc: 252.59 ng/ml



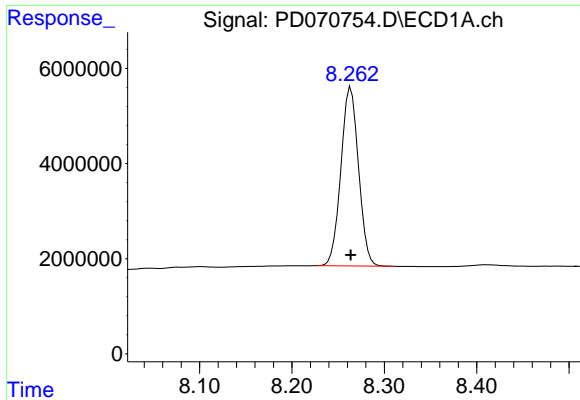
#21 Endrin ketone

R.T.: 7.203 min  
 Delta R.T.: -0.002 min  
 Response: 10224610  
 Conc: 3.84 ng/ml



#21 Endrin ketone

R.T.: 7.934 min  
 Delta R.T.: 0.000 min  
 Response: 44933942  
 Conc: 3.50 ng/ml m

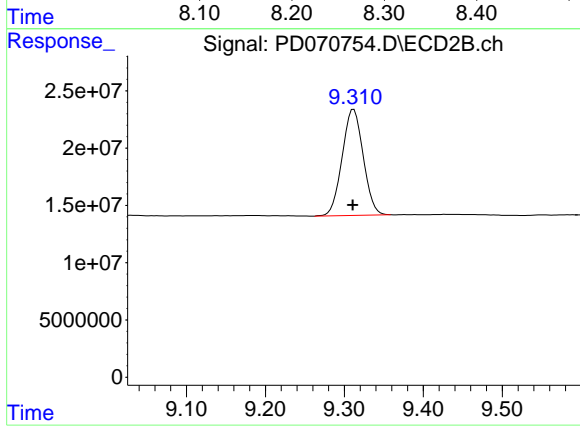


#28 Decachlorobiphenyl  
R.T.: 8.264 min  
Delta R.T.: 0.000 min  
Response: 49891318  
Conc: 20.12 ng/ml

Instrument :  
ECD\_D  
ClientSampleId :  
PEM

Manual Integrations  
APPROVED

Reviewed By :Abdul Mirza 07/08/2022  
Supervised By :Ankita Jodhani 07/08/2022



#28 Decachlorobiphenyl  
R.T.: 9.312 min  
Delta R.T.: 0.001 min  
Response: 172155937  
Conc: 20.93 ng/ml