

Data Path : Z:\pestpcbsrv\HPCHEM1\ECD\_D\Data\PD070919\  
 Data File : PD053923.D  
 Signal(s) : Signal #1: ECD1A.CH Signal #2: ECD2B.CH  
 Acq On : 09 Jul 2019 11:12  
 Operator : SM\AJ  
 Sample : K3692-12  
 Misc :  
 ALS Vial : 6 Sample Multiplier: 1

**Instrument :**  
 ECD\_D  
**ClientSampleId :**  
 PEST-GPC2-BLANK-SPIKE

Integration File signal 1: autoint1.e  
 Integration File signal 2: autoint2.e  
 Quant Time: Jul 10 05:16:49 2019  
 Quant Method : Z:\pestpcbsrv\HPCHEM1\ECD\_D\Method\PD070319CLP.M  
 Quant Title : GC Extractables  
 QLast Update : Fri Jul 05 03:58:18 2019  
 Response via : Initial Calibration  
 Integrator: ChemStation 6890 Scale Mode: Large solvent peaks clipped

Volume Inj. : 1 µl  
 Signal #1 Phase : ZB-MR2 Signal #2 Phase: ZB-MR1  
 Signal #1 Info : 30M x 0.32mm x0.2 Signal #2 Info : 30M x 0.32mm x 0.50µm

Compound	RT#1	RT#2	Resp#1	Resp#2	ng/ml	ng/ml
----------	------	------	--------	--------	-------	-------

System Monitoring Compounds

Target Compounds

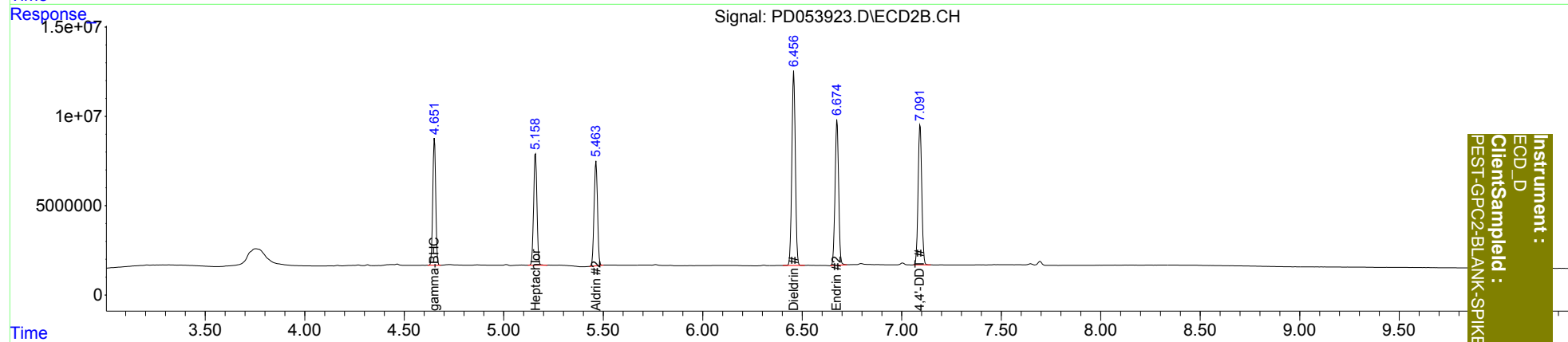
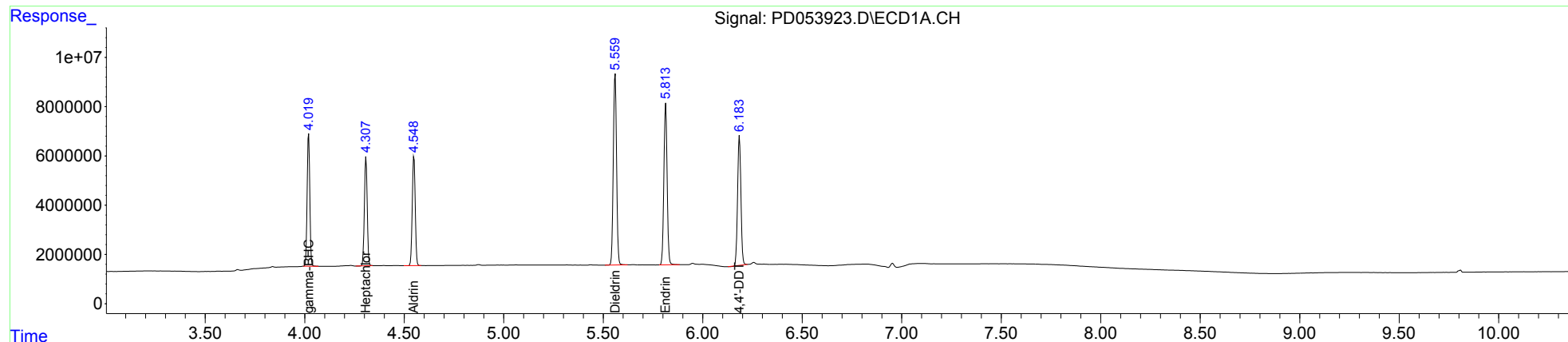
3) MA gamma-BHC...	4.020	4.652	49882776	73138481	46.757	47.426
4) MA Heptachlor	4.308	5.160	43453126	71995878	44.719	45.464
5) MB Aldrin	4.549	5.464	45997187	69184577	47.136	46.179
13) MA Dieldrin	5.560	6.458	88877755	133.1E6	90.707	89.839
14) MA Endrin	5.814	6.675	74747417	101.8E6	89.852	88.689
17) MA 4,4'-DDT	6.185	7.093	61264835	100.3E6	85.486	85.026

(f)=RT Delta > 1/2 Window (#)=Amounts differ by > 25% (m)=manual int.

Data Path : Z:\pestpcbsrv\HPCHEM1\ECD\_D\Data\PD070919\  
 Data File : PD053923.D  
 Signal(s) : Signal #1: ECD1A.CH Signal #2: ECD2B.CH  
 Acq On : 09 Jul 2019 11:12  
 Operator : SM\AJ  
 Sample : K3692-12  
 Misc :  
 ALS Vial : 6 Sample Multiplier: 1

Integration File signal 1: autoint1.e  
 Integration File signal 2: autoint2.e  
 Quant Time: Jul 10 05:16:49 2019  
 Quant Method : Z:\pestpcbsrv\HPCHEM1\ECD\_D\Method\PD070319CLP.M  
 Quant Title : GC Extractables  
 QLast Update : Fri Jul 05 03:58:18 2019  
 Response via : Initial Calibration  
 Integrator: ChemStation 6890 Scale Mode: Large solvent peaks clipped

Volume Inj. : 1 µl  
 Signal #1 Phase : ZB-MR2 Signal #2 Phase: ZB-MR1  
 Signal #1 Info : 30M x 0.32mm x0.2 Signal #2 Info : 30M x 0.32mm x 0.50µm



Instrument :  
 ECD\_D  
 ClientSampleId :  
 PEST-GPC2-BLANK-SPIKE