

Data Path : Z:\pestpcbsrv\HPCHEM1\ECD\_D\Data\PD070919\  
 Data File : PD053925.D  
 Signal(s) : Signal #1: ECD1A.CH Signal #2: ECD2B.CH  
 Acq On : 09 Jul 2019 11:40  
 Operator : SM\AJ  
 Sample : PIBLK17  
 Misc :  
 ALS Vial : 2 Sample Multiplier: 1

Instrument :  
 ECD\_D  
 ClientSampleId :  
 PIBLK17

Integration File signal 1: autoint1.e  
 Integration File signal 2: autoint2.e  
 Quant Time: Jul 10 05:17:16 2019  
 Quant Method : Z:\pestpcbsrv\HPCHEM1\ECD\_D\Method\PD070319CLP.M  
 Quant Title : GC Extractables  
 QLast Update : Fri Jul 05 03:58:18 2019  
 Response via : Initial Calibration  
 Integrator: ChemStation 6890 Scale Mode: Large solvent peaks clipped

Volume Inj. : 1 µl  
 Signal #1 Phase : ZB-MR2 Signal #2 Phase: ZB-MR1  
 Signal #1 Info : 30M x 0.32mm x0.2 Signal #2 Info : 30M x 0.32mm x 0.50µm

Compound	RT#1	RT#2	Resp#1	Resp#2	ng/ml	ng/ml
-----						
System Monitoring Compounds						
1) SA Tetrachlo...	3.313	3.982	16743403	24617400	21.944	21.827
2) SA Decachlor...	8.008	9.025	31556856	42859202	42.490	41.020

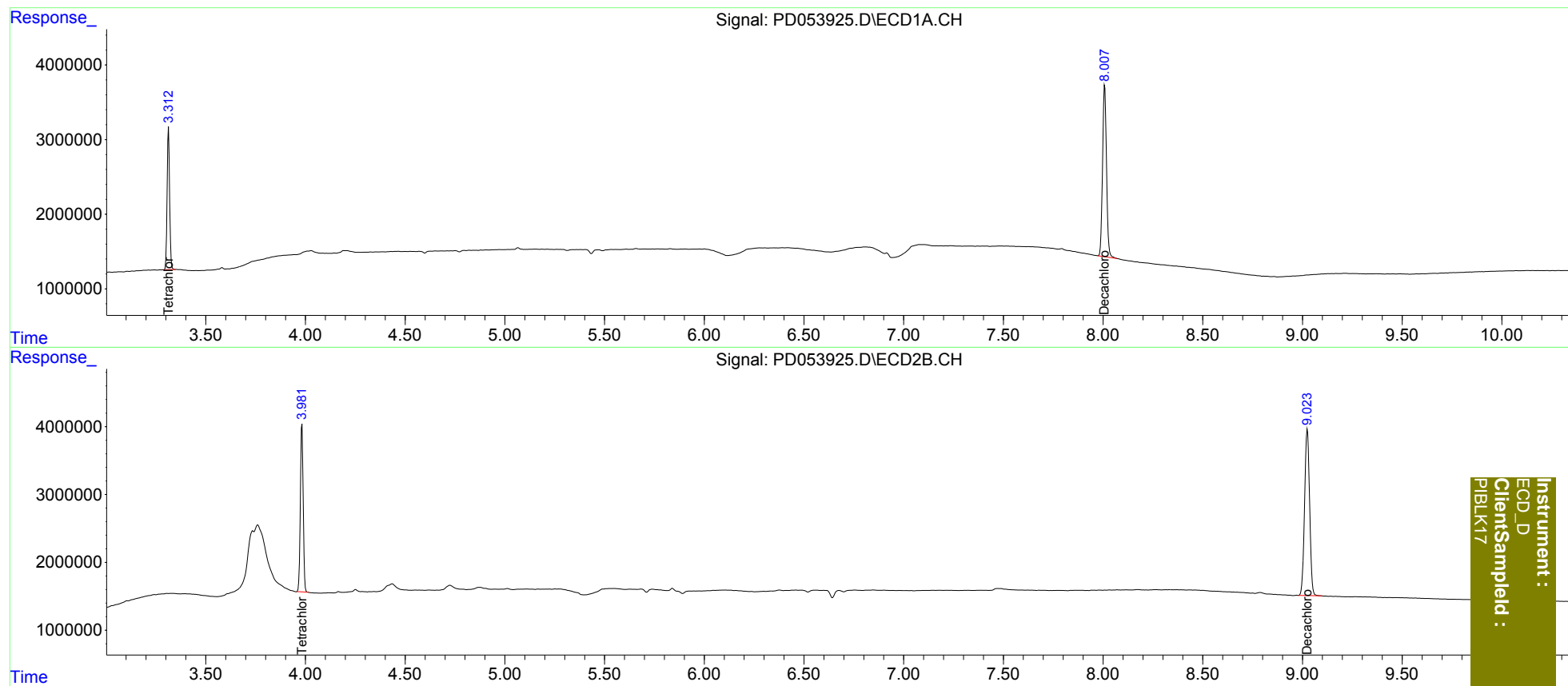
Target Compounds

-----  
 (f)=RT Delta > 1/2 Window (#)=Amounts differ by > 25% (m)=manual int.

Data Path : Z:\pestpcbsrv\HPCHEM1\ECD\_D\Data\PD070919\  
Data File : PD053925.D  
Signal(s) : Signal #1: ECD1A.CH Signal #2: ECD2B.CH  
Acq On : 09 Jul 2019 11:40  
Operator : SM\AJ  
Sample : PIBLK17  
Misc :  
ALS Vial : 2 Sample Multiplier: 1

Integration File signal 1: autoint1.e  
Integration File signal 2: autoint2.e  
Quant Time: Jul 10 05:17:16 2019  
Quant Method : Z:\pestpcbsrv\HPCHEM1\ECD\_D\Method\PD070319CLP.M  
Quant Title : GC Extractables  
QLast Update : Fri Jul 05 03:58:18 2019  
Response via : Initial Calibration  
Integrator: ChemStation 6890 Scale Mode: Large solvent peaks clipped

Volume Inj. : 1 µl  
Signal #1 Phase : ZB-MR2 Signal #2 Phase: ZB-MR1  
Signal #1 Info : 30M x 0.32mm x0.2 Signal #2 Info : 30M x 0.32mm x 0.50µm



Instrument :  
ECD\_D  
ClientSampled :  
PIBLK17