

Data Path : Z:\pestpcbsrv\HPCHEM1\ECD_D\Data\PD070920\
 Data File : PD058500.D
 Signal(s) : Signal #1: ECD1A.ch Signal #2: ECD2B.ch
 Acq On : 09 Jul 2020 11:11
 Operator : AJ\MA
 Sample : L3216-01
 Misc : CHLOR LOD 25 PPB
 ALS Vial : 11 Sample Multiplier: 1

Instrument :
 ECD_D
 ClientSampleId :

Integration File signal 1: autoint1.e
 Integration File signal 2: autoint2.e
 Quant Time: Jul 10 01:17:50 2020
 Quant Method : Z:\pestpcbsrv\HPCHEM1\ECD_D\Method\PD070720.M
 Quant Title : GC Extractables
 QLast Update : Wed Jul 08 08:01:25 2020
 Response via : Initial Calibration
 Integrator: ChemStation

Volume Inj. : 2 µl
 Signal #1 Phase : ZB-MR2 Signal #2 Phase: ZB-MR1
 Signal #1 Info : 30M x 0.32mm x0.2 Signal #2 Info : 30M x 0.32mm x 0.50µm

| Compound | RT#1 | RT#2 | Resp#1 | Resp#2 | ng/ml | ng/ml |
|-----------------------------|-------|-------|----------|----------|--------|---------|
| ----- | | | | | | |
| System Monitoring Compounds | | | | | | |
| 1) SA Tetrachlo... | 3.210 | 3.866 | 31491918 | 42883725 | 17.272 | 17.356 |
| 28) SA Decachlor... | 7.846 | 8.860 | 32651042 | 41852561 | 18.081 | 19.196 |
| Target Compounds | | | | | | |
| 4) MA Heptachlor | 0.000 | 5.029 | 0 | 2364279 | N.D. | 0.751 # |
| 10) B gamma-Chl... | 5.070 | 5.945 | 3989219 | 7518813 | 1.792 | 2.584 # |
| 11) B alpha-Chl... | 5.125 | 6.019 | 3930111 | 9391368 | 1.775 | 3.265 # |
| 25) Chlordane-3 | 5.070 | 5.945 | 3989219 | 7518813 | 19.489 | 20.215 |
| 26) Chlordane-4 | 5.125 | 6.019 | 3930111 | 9391368 | 20.595 | 21.589 |
| ----- | | | | | | |

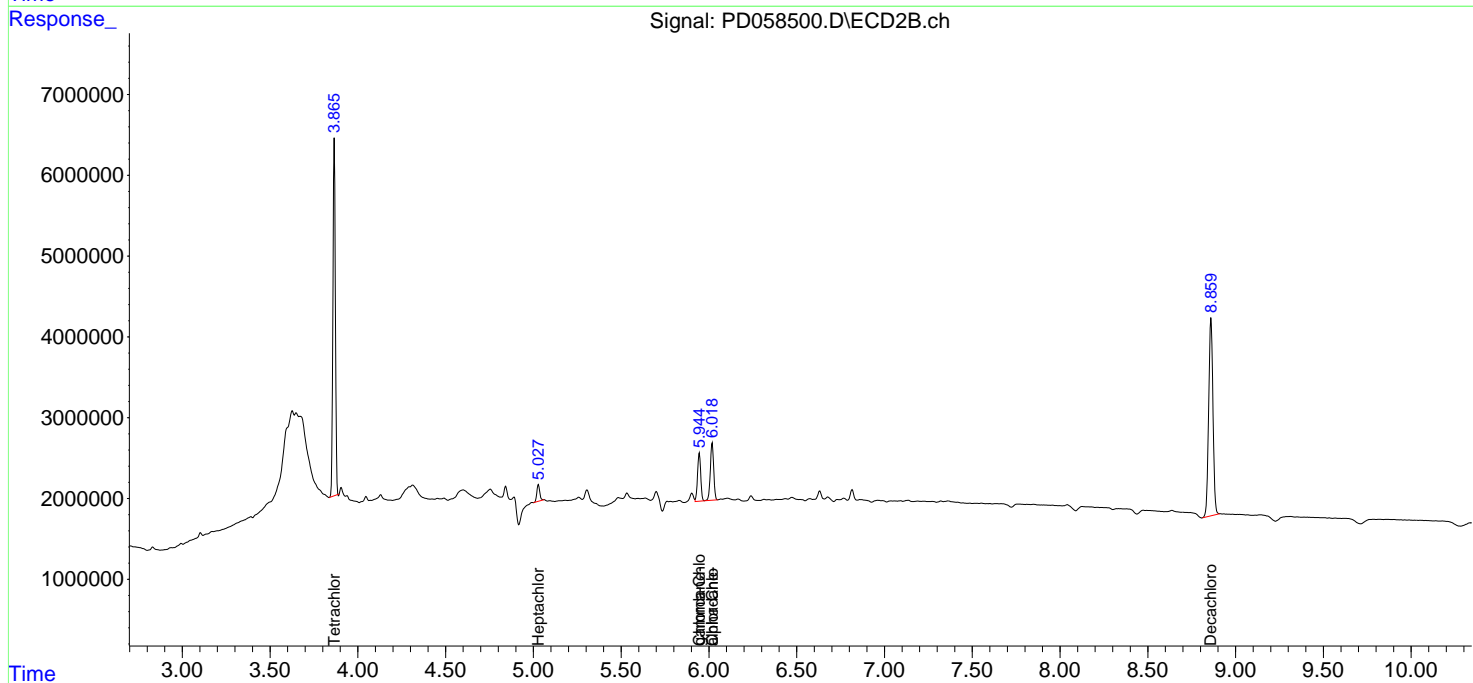
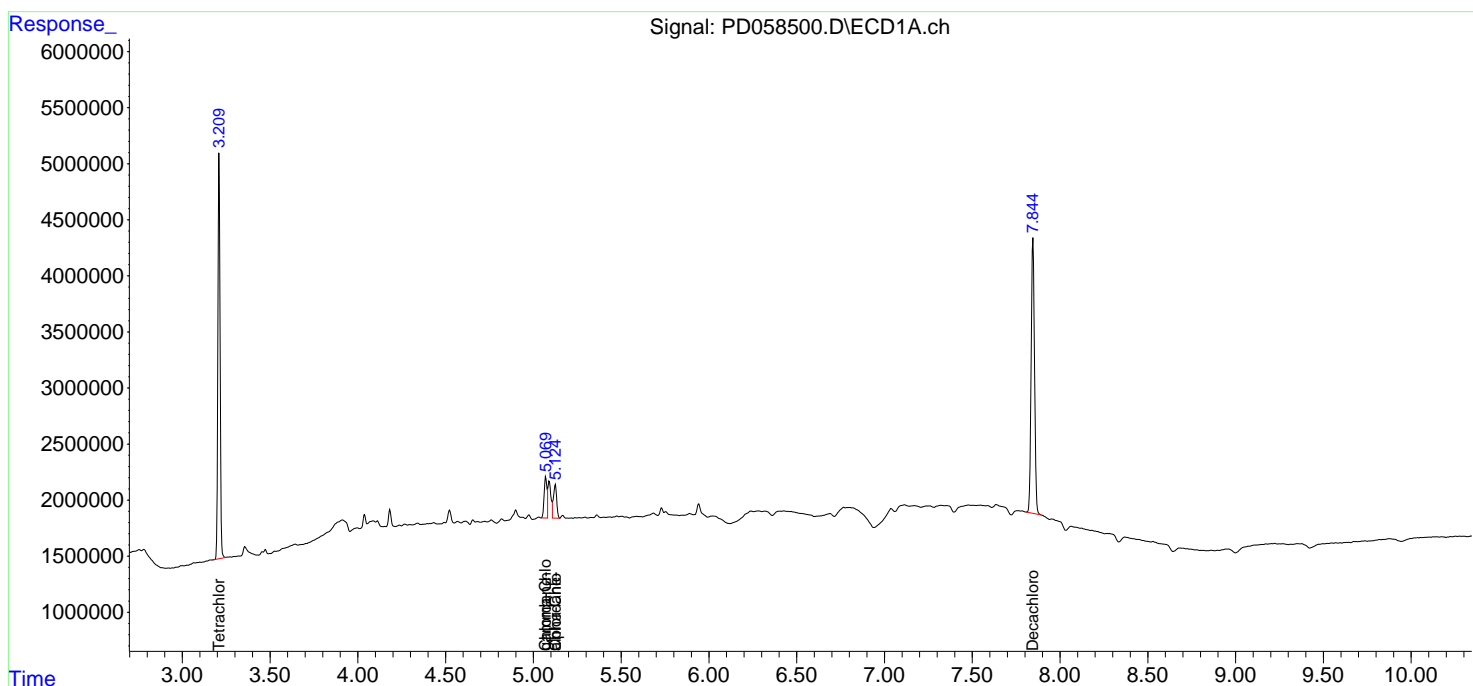
(f)=RT Delta > 1/2 Window (#)=Amounts differ by > 25% (m)=manual int.

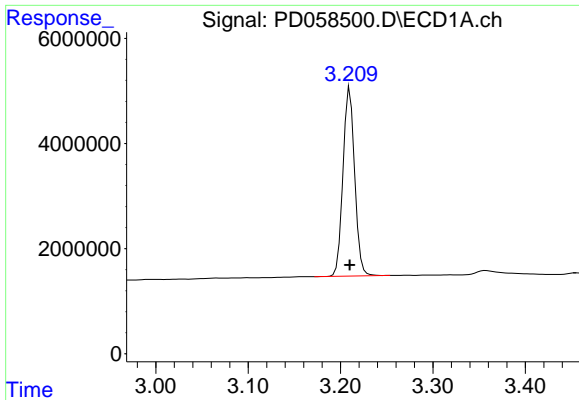
Data Path : Z:\pestpcbsrv\HPCHEM1\ECD_D\Data\PD070920\
 Data File : PD058500.D
 Signal(s) : Signal #1: ECD1A.ch Signal #2: ECD2B.ch
 Acq On : 09 Jul 2020 11:11
 Operator : AJ\MA
 Sample : L3216-01
 Misc : CHLOR LOD 25 PPB
 ALS Vial : 11 Sample Multiplier: 1

Instrument :
 ECD_D
 ClientSampled :

Integration File signal 1: autoint1.e
 Integration File signal 2: autoint2.e
 Quant Time: Jul 10 01:17:50 2020
 Quant Method : Z:\pestpcbsrv\HPCHEM1\ECD_D\Method\PD070720.M
 Quant Title : GC Extractables
 QLast Update : Wed Jul 08 08:01:25 2020
 Response via : Initial Calibration
 Integrator: ChemStation

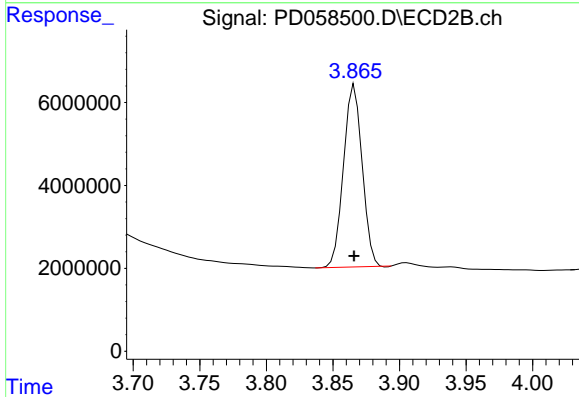
Volume Inj. : 2 µl
 Signal #1 Phase : ZB-MR2 Signal #2 Phase: ZB-MR1
 Signal #1 Info : 30M x 0.32mm x0.2 Signal #2 Info : 30M x 0.32mm x 0.50µm



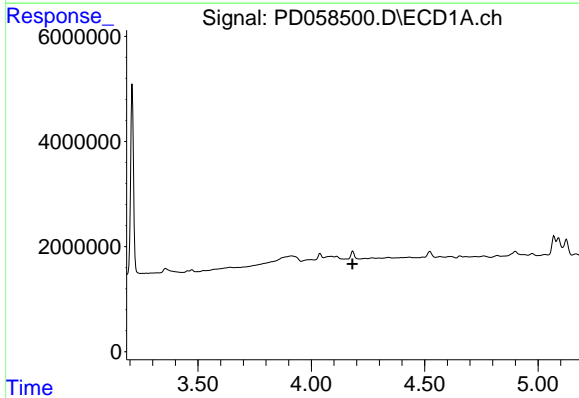


#1 Tetrachloro-m-xylene
 R.T.: 3.210 min
 Delta R.T.: 0.000 min
 Response: 31491918
 Conc: 17.27 ng/ml

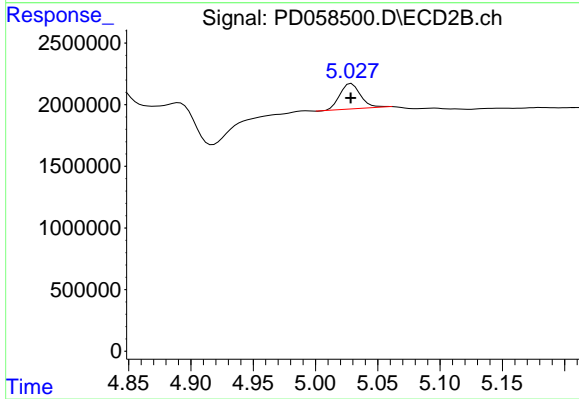
Instrument :
 ECD_D
 ClientSampled :



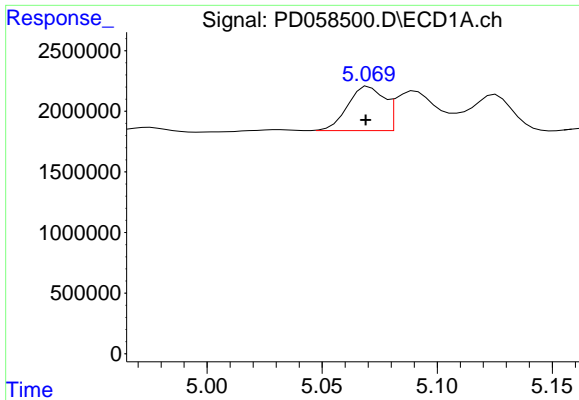
#1 Tetrachloro-m-xylene
 R.T.: 3.866 min
 Delta R.T.: 0.000 min
 Response: 42883725
 Conc: 17.36 ng/ml



#4 Heptachlor
 R.T.: 0.000 min
 Exp R.T. : 4.182 min
 Response: 0
 Conc: N.D.

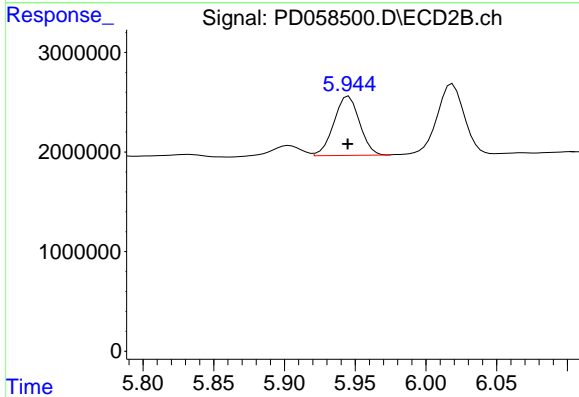


#4 Heptachlor
 R.T.: 5.029 min
 Delta R.T.: 0.000 min
 Response: 2364279
 Conc: 0.75 ng/ml

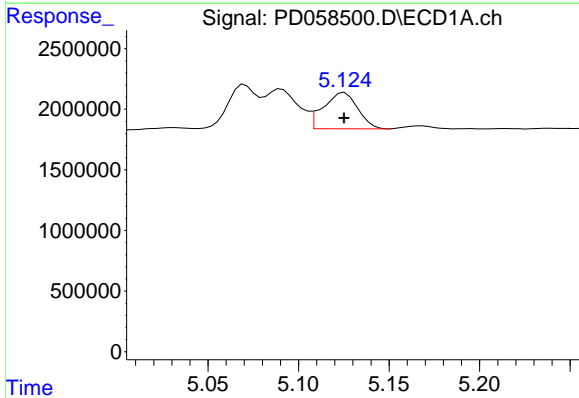


#10 gamma-Chlordane
 R.T.: 5.070 min
 Delta R.T.: 0.002 min
 Response: 3989219
 Conc: 1.79 ng/ml

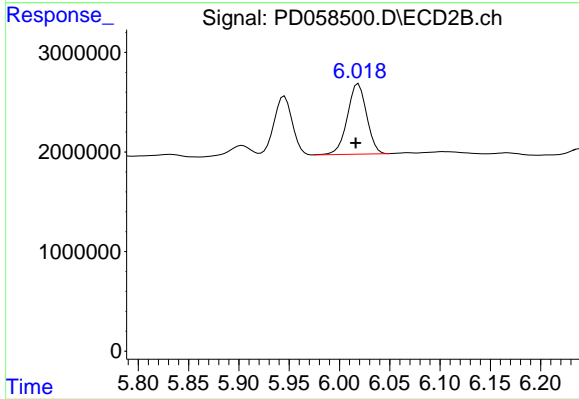
Instrument :
 ECD_D
 ClientSampleId :



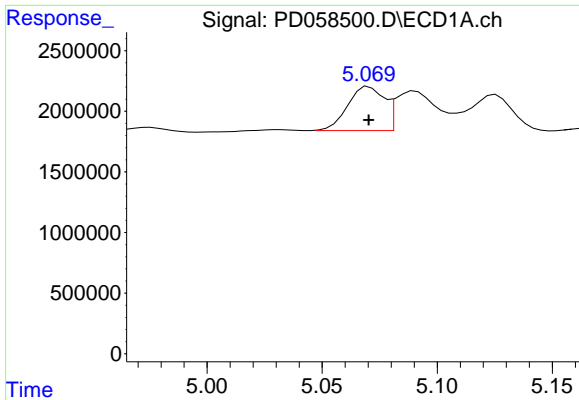
#10 gamma-Chlordane
 R.T.: 5.945 min
 Delta R.T.: 0.000 min
 Response: 7518813
 Conc: 2.58 ng/ml



#11 alpha-Chlordane
 R.T.: 5.125 min
 Delta R.T.: 0.000 min
 Response: 3930111
 Conc: 1.77 ng/ml

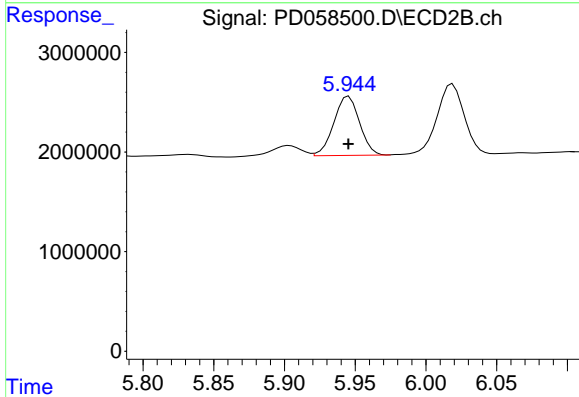


#11 alpha-Chlordane
 R.T.: 6.019 min
 Delta R.T.: 0.003 min
 Response: 9391368
 Conc: 3.27 ng/ml

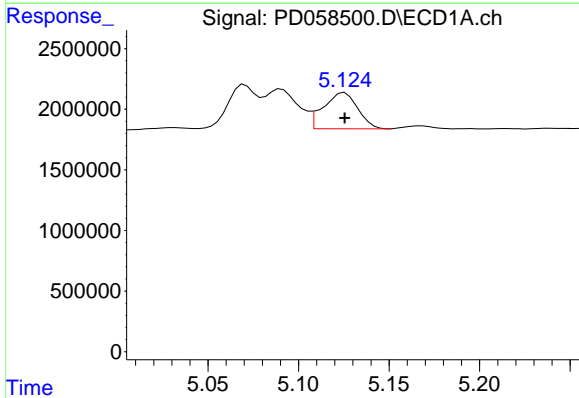


#25 Chlordane-3
 R.T.: 5.070 min
 Delta R.T.: 0.000 min
 Response: 3989219
 Conc: 19.49 ng/ml

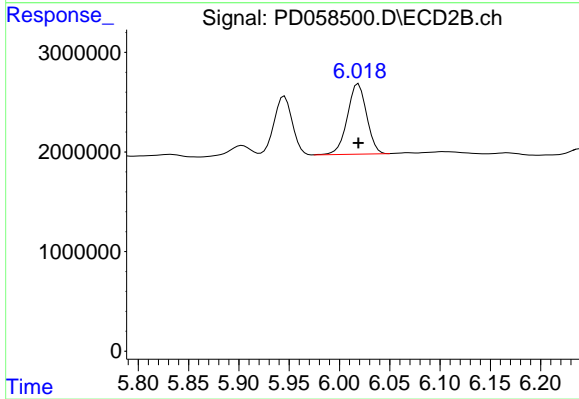
Instrument :
 ECD_D
 ClientSampleId :



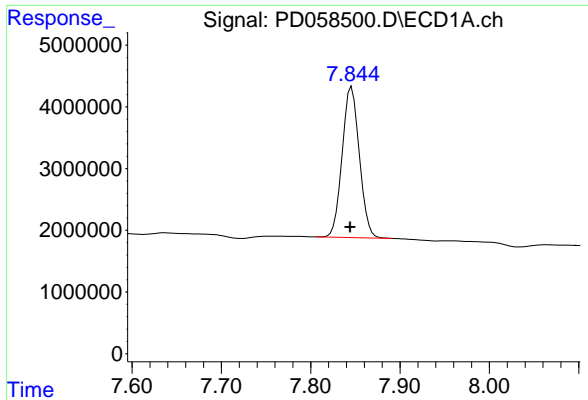
#25 Chlordane-3
 R.T.: 5.945 min
 Delta R.T.: 0.000 min
 Response: 7518813
 Conc: 20.21 ng/ml



#26 Chlordane-4
 R.T.: 5.125 min
 Delta R.T.: 0.000 min
 Response: 3930111
 Conc: 20.60 ng/ml

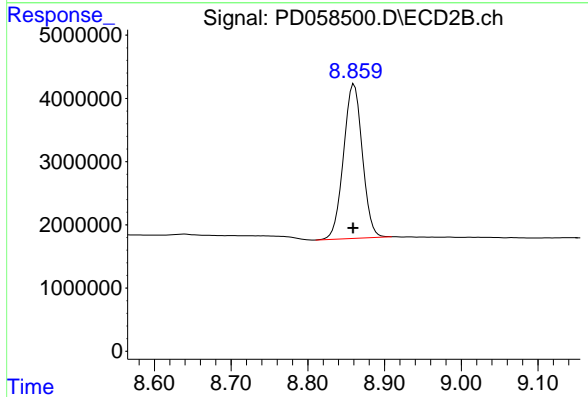


#26 Chlordane-4
 R.T.: 6.019 min
 Delta R.T.: 0.000 min
 Response: 9391368
 Conc: 21.59 ng/ml



#28 Decachlorobiphenyl
R.T.: 7.846 min
Delta R.T.: 0.002 min
Response: 32651042
Conc: 18.08 ng/ml

Instrument :
ECD_D
ClientSampleId :



#28 Decachlorobiphenyl
R.T.: 8.860 min
Delta R.T.: 0.001 min
Response: 41852561
Conc: 19.20 ng/ml