

Data Path : Z:\pestpcbsrv\HPCHEM1\ECD_D\Data\PD070920\
 Data File : PD058508.D
 Signal(s) : Signal #1: ECD1A.ch Signal #2: ECD2B.ch
 Acq On : 09 Jul 2020 13:08
 Operator : AJ\MA
 Sample : PCHLORCCC500
 Misc :
 ALS Vial : 5 Sample Multiplier: 1

Instrument :
 ECD_D
 ClientSampleId :

Integration File signal 1: autoint1.e
 Integration File signal 2: autoint2.e
 Quant Time: Jul 10 01:20:03 2020
 Quant Method : Z:\pestpcbsrv\HPCHEM1\ECD_D\Method\PD070720.M
 Quant Title : GC Extractables
 QLast Update : Wed Jul 08 08:01:25 2020
 Response via : Initial Calibration
 Integrator: ChemStation

Volume Inj. : 2 µl
 Signal #1 Phase : ZB-MR2 Signal #2 Phase: ZB-MR1
 Signal #1 Info : 30M x 0.32mm x0.2 Signal #2 Info : 30M x 0.32mm x 0.50µm

	Compound	RT#1	RT#2	Resp#1	Resp#2	ng/ml	ng/ml

System Monitoring Compounds							
1)	SA Tetrachlo...	3.209	3.866	85059374	106.2E6	46.651	42.985
28)	SA Decachlor...	7.846	8.859	76052404	91828350	42.115	42.118
Target Compounds							
2)	A alpha-BHC	0.000	4.256	0	4499451	N.D.	1.193 #
4)	MA Heptachlor	4.182	5.029	31084263	51802787	17.143	16.455
5)	MB Aldrin	4.432	5.305f	2665484	40733561	1.119	12.845 #
6)	B beta-BHC	0.000	4.720f	0	3232109	N.D.	2.282 #
8)	B Heptachlo...	0.000	5.699	0	35221592	N.D.	12.100 #
9)	A Endosulfan I	5.166	0.000	6615771	0	3.339	N.D. #
10)	B gamma-Chl...	5.070	5.945	88552746	165.7E6	39.775	56.936 #
11)	B alpha-Chl...	5.125	6.018	81916810	194.3E6	36.995	67.569 #
13)	MA Dieldrin	0.000	6.319	0	7609443	N.D.	2.664 #
14)	MA Endrin	5.674	6.557f	6210293	845092	4.361	0.397 #
15)	B Endosulfa...	5.941	6.724f	27946493	4598702	15.488	1.864 #
16)	A 4,4'-DDD	0.000	6.677	0	7359891	N.D.	3.192 #
23)	Chlordane-1	4.037	4.843	24667397	38575225	422.728	433.424
24)	Chlordane-2	4.522	5.305	27178450	40733561	420.454	412.341
25)	Chlordane-3	5.070	5.945	88552746	165.7E6	432.612	445.453
26)	Chlordane-4	5.125	6.018	81916810	194.3E6	429.269	446.731
27)	Chlordane-5	5.941	6.815	27946493	34936186	454.769	438.463

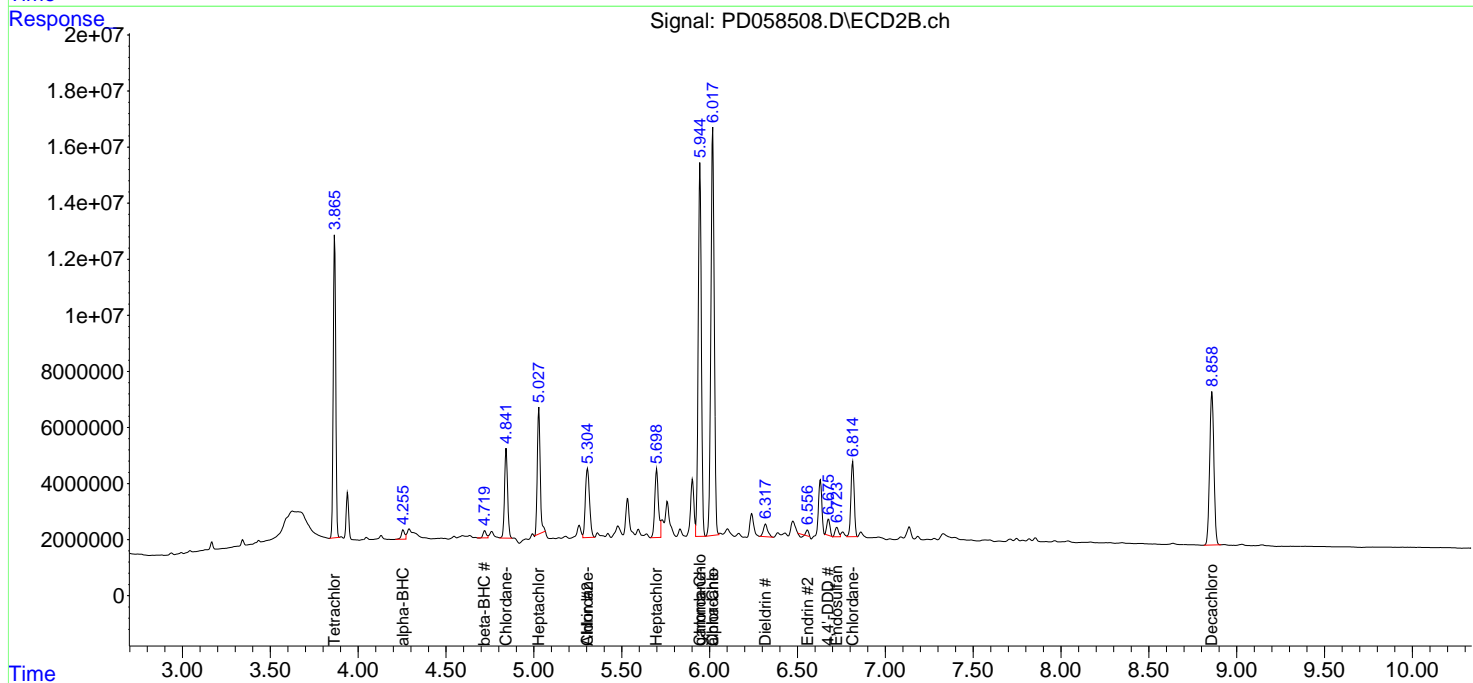
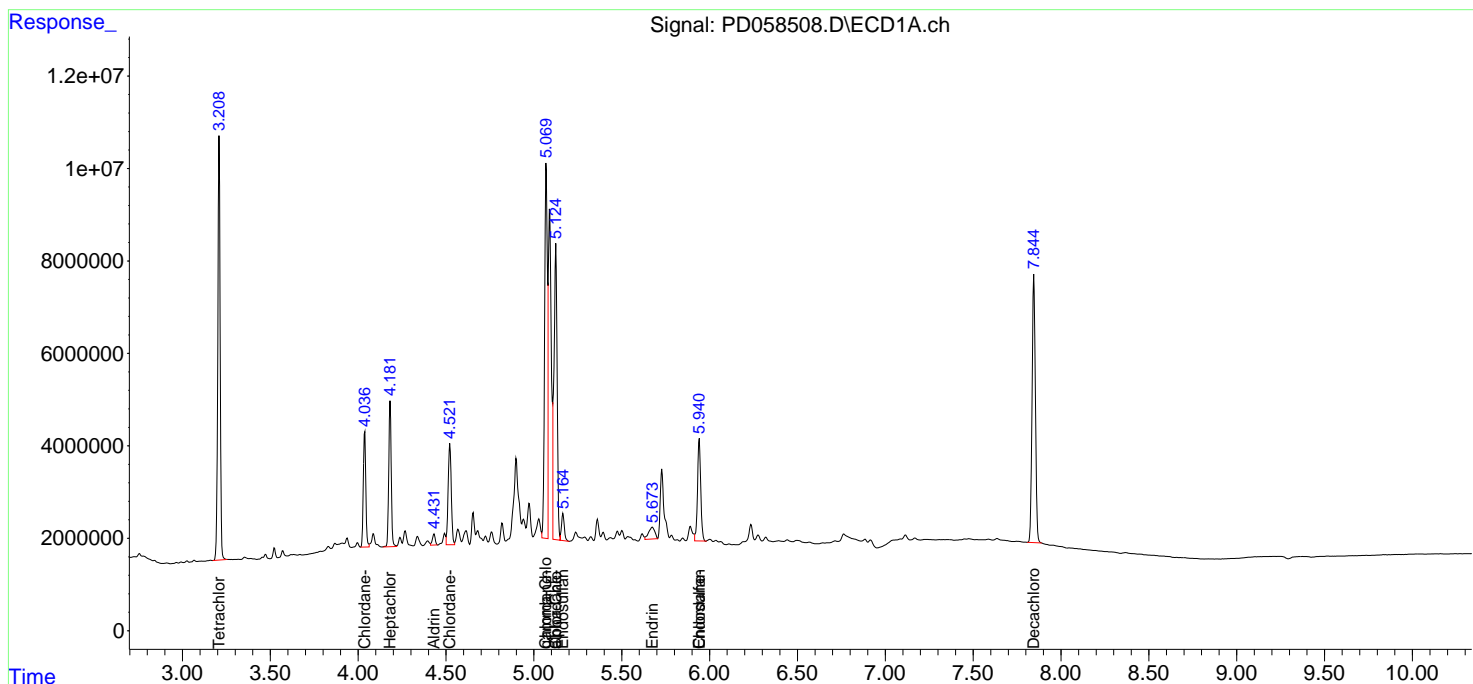
(f)=RT Delta > 1/2 Window (#)=Amounts differ by > 25% (m)=manual int.

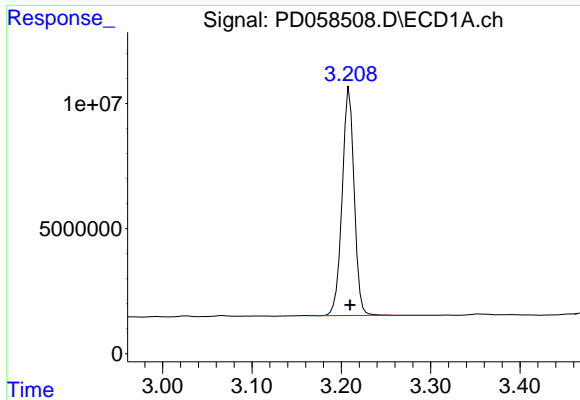
Data Path : Z:\pestpcbsrv\HPCHEM1\ECD_D\Data\PD070920\
 Data File : PD058508.D
 Signal(s) : Signal #1: ECD1A.ch Signal #2: ECD2B.ch
 Acq On : 09 Jul 2020 13:08
 Operator : AJ\MA
 Sample : PCHLORCCC500
 Misc :
 ALS Vial : 5 Sample Multiplier: 1

Instrument :
 ECD_D
 ClientSampled :

Integration File signal 1: autoint1.e
 Integration File signal 2: autoint2.e
 Quant Time: Jul 10 01:20:03 2020
 Quant Method : Z:\pestpcbsrv\HPCHEM1\ECD_D\Method\PD070720.M
 Quant Title : GC Extractables
 QLast Update : Wed Jul 08 08:01:25 2020
 Response via : Initial Calibration
 Integrator: ChemStation

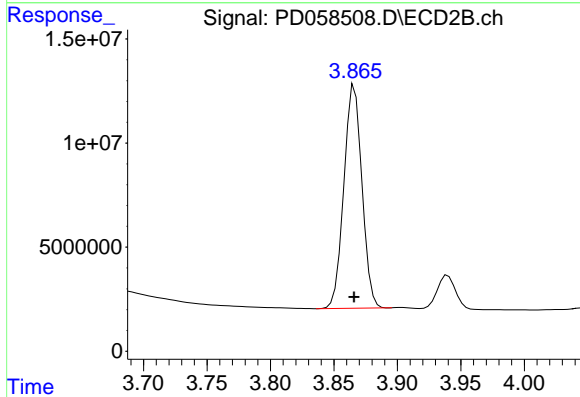
Volume Inj. : 2 µl
 Signal #1 Phase : ZB-MR2 Signal #2 Phase: ZB-MR1
 Signal #1 Info : 30M x 0.32mm x0.2 Signal #2 Info : 30M x 0.32mm x 0.50µm



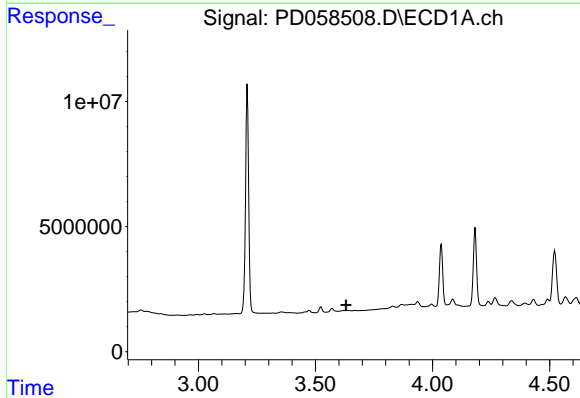


#1 Tetrachloro-m-xylene
 R.T.: 3.209 min
 Delta R.T.: 0.000 min
 Response: 85059374
 Conc: 46.65 ng/ml

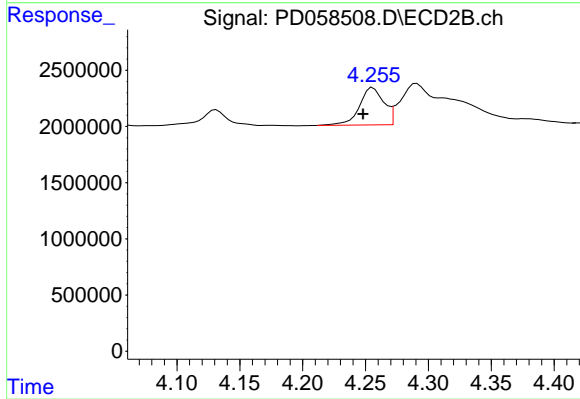
Instrument :
 ECD_D
 ClientSampleId :



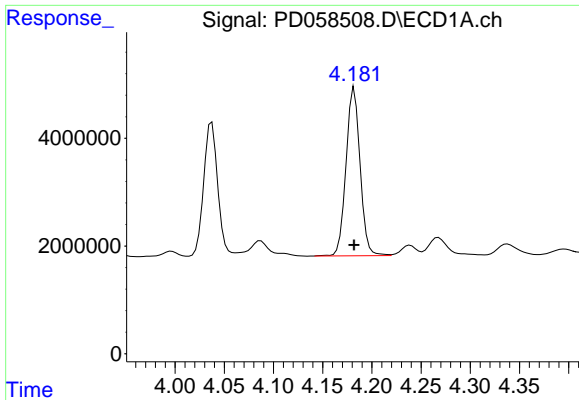
#1 Tetrachloro-m-xylene
 R.T.: 3.866 min
 Delta R.T.: 0.000 min
 Response: 106205634
 Conc: 42.98 ng/ml



#2 alpha-BHC
 R.T.: 0.000 min
 Exp R.T. : 3.632 min
 Response: 0
 Conc: N.D.

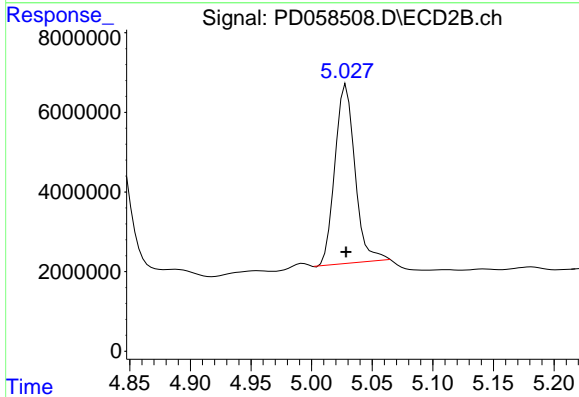


#2 alpha-BHC
 R.T.: 4.256 min
 Delta R.T.: 0.008 min
 Response: 4499451
 Conc: 1.19 ng/ml

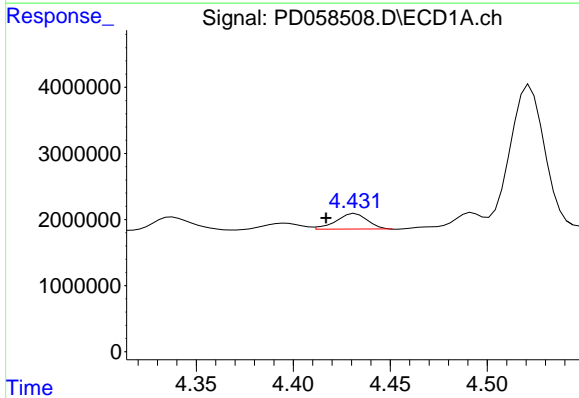


#4 Heptachlor
 R.T.: 4.182 min
 Delta R.T.: 0.000 min
 Response: 31084263
 Conc: 17.14 ng/ml

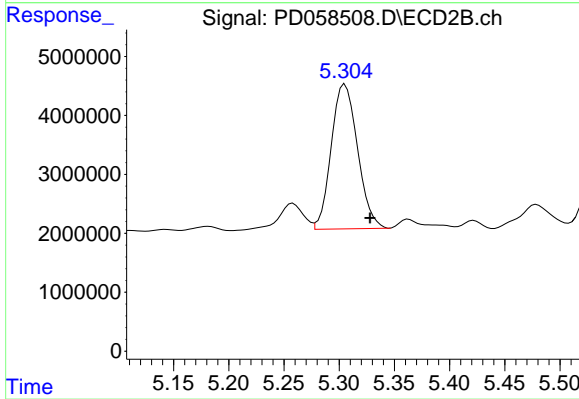
Instrument :
 ECD_D
 ClientSampled :



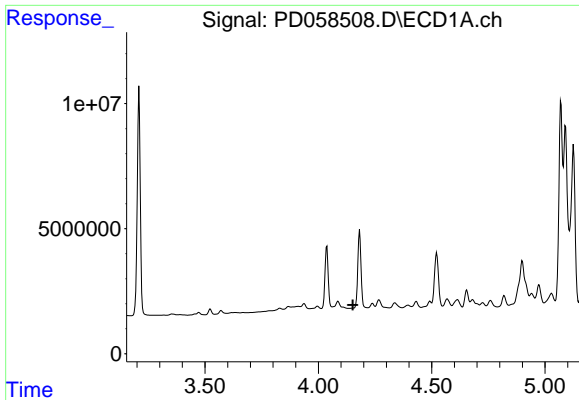
#4 Heptachlor
 R.T.: 5.029 min
 Delta R.T.: 0.000 min
 Response: 51802787
 Conc: 16.45 ng/ml



#5 Aldrin
 R.T.: 4.432 min
 Delta R.T.: 0.015 min
 Response: 2665484
 Conc: 1.12 ng/ml



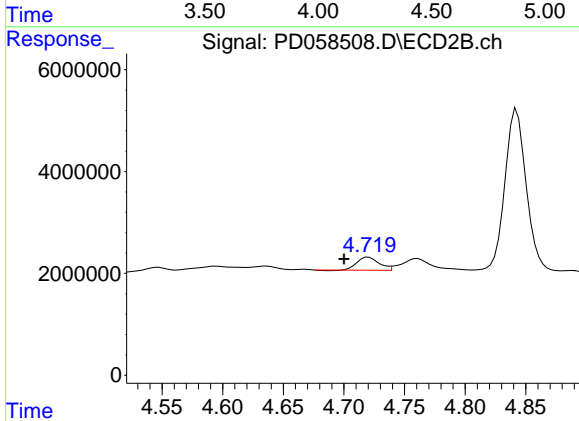
#5 Aldrin
 R.T.: 5.305 min
 Delta R.T.: -0.023 min
 Response: 40733561
 Conc: 12.85 ng/ml



#6 beta-BHC

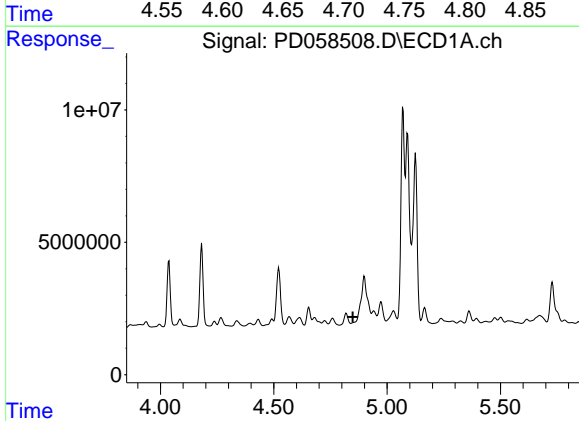
R.T.: 0.000 min
 Exp R.T.: 4.152 min
 Response: 0
 Conc: N.D.

Instrument :
 ECD_D
 ClientSampleId :



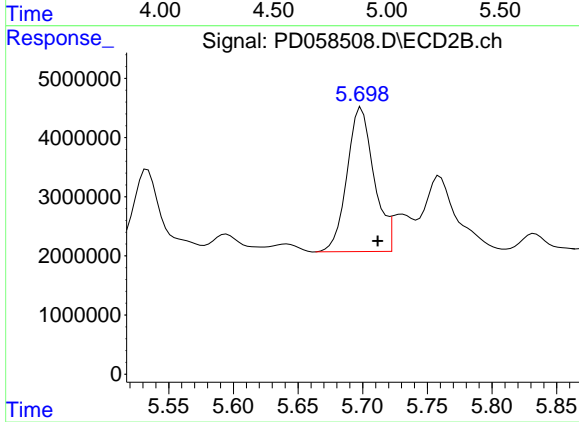
#6 beta-BHC

R.T.: 4.720 min
 Delta R.T.: 0.020 min
 Response: 3232109
 Conc: 2.28 ng/ml



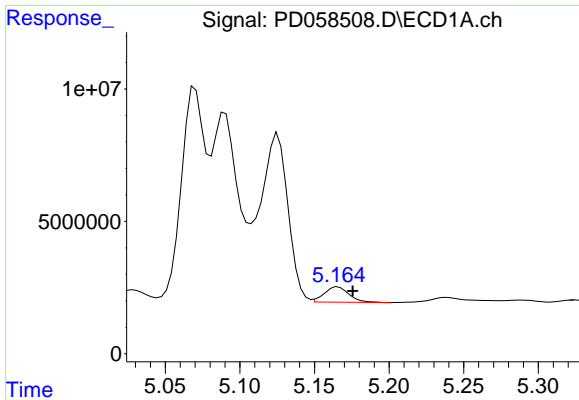
#8 Heptachlor epoxide

R.T.: 0.000 min
 Exp R.T.: 4.849 min
 Response: 0
 Conc: N.D.



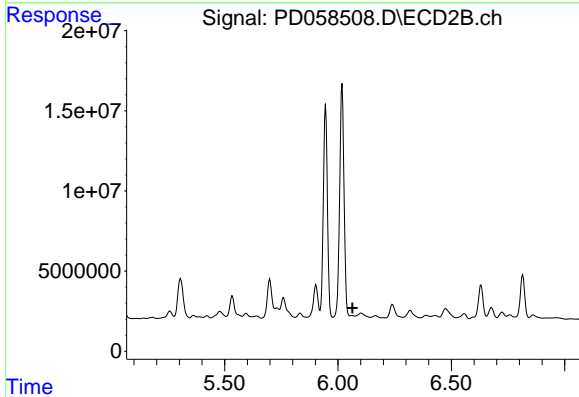
#8 Heptachlor epoxide

R.T.: 5.699 min
 Delta R.T.: -0.013 min
 Response: 35221592
 Conc: 12.10 ng/ml

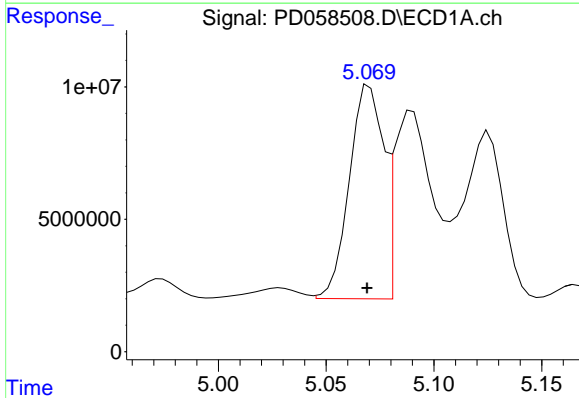


#9 Endosulfan I
 R.T.: 5.166 min
 Delta R.T.: -0.010 min
 Response: 6615771
 Conc: 3.34 ng/ml

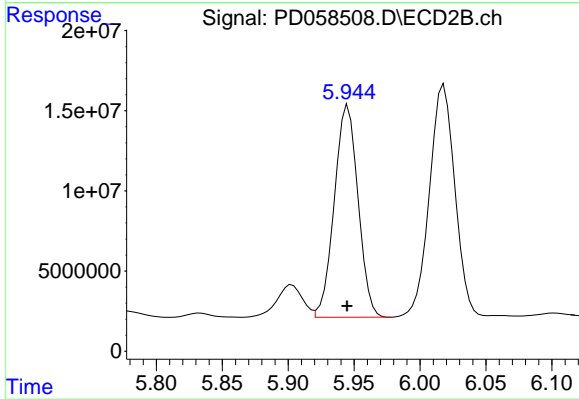
Instrument :
 ECD_D
 ClientSampled :



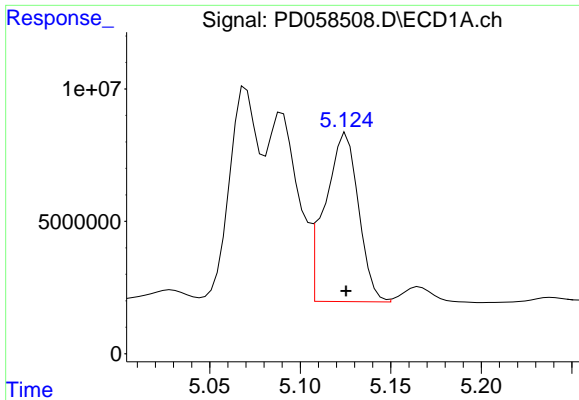
#9 Endosulfan I
 R.T.: 0.000 min
 Exp R.T. : 6.064 min
 Response: 0
 Conc: N.D.



#10 gamma-Chlordane
 R.T.: 5.070 min
 Delta R.T.: 0.001 min
 Response: 88552746
 Conc: 39.77 ng/ml

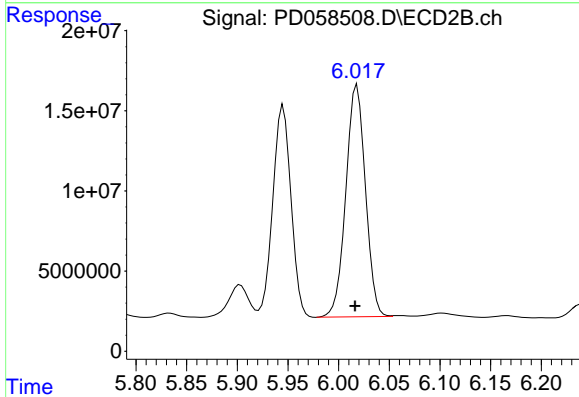


#10 gamma-Chlordane
 R.T.: 5.945 min
 Delta R.T.: 0.000 min
 Response: 165684253
 Conc: 56.94 ng/ml

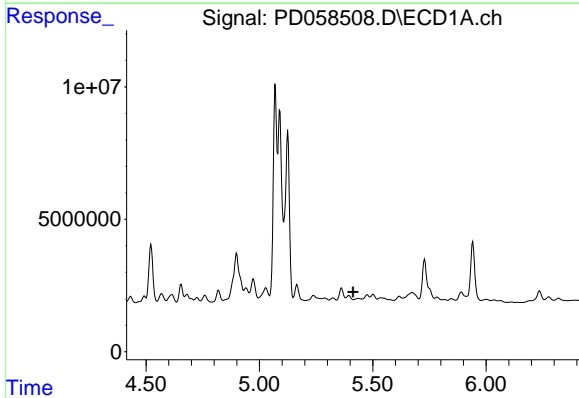


#11 alpha-Chlordane
 R.T.: 5.125 min
 Delta R.T.: 0.000 min
 Response: 81916810
 Conc: 36.99 ng/ml

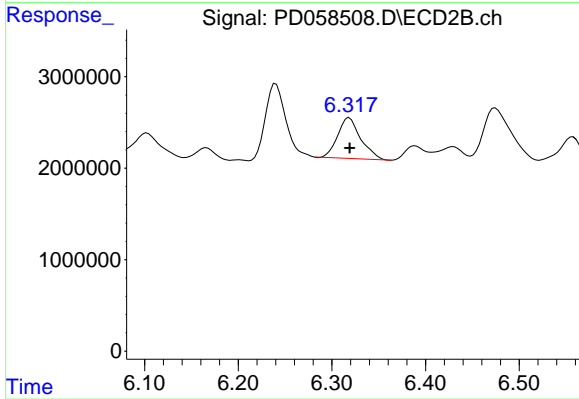
Instrument :
 ECD_D
 ClientSampleId :



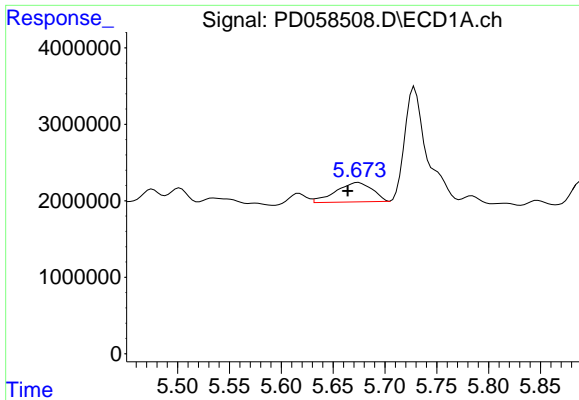
#11 alpha-Chlordane
 R.T.: 6.018 min
 Delta R.T.: 0.002 min
 Response: 194328161
 Conc: 67.57 ng/ml



#13 Dieldrin
 R.T.: 0.000 min
 Exp R.T. : 5.413 min
 Response: 0
 Conc: N.D.

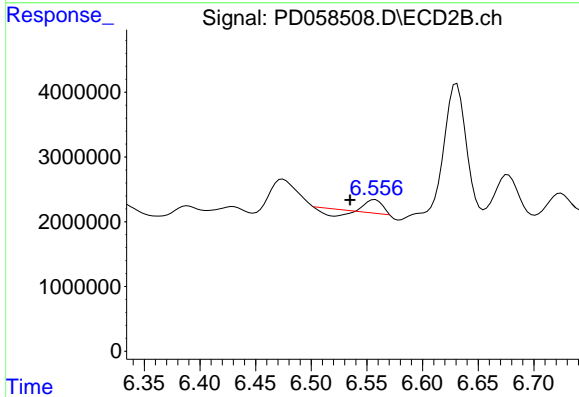


#13 Dieldrin
 R.T.: 6.319 min
 Delta R.T.: 0.000 min
 Response: 7609443
 Conc: 2.66 ng/ml

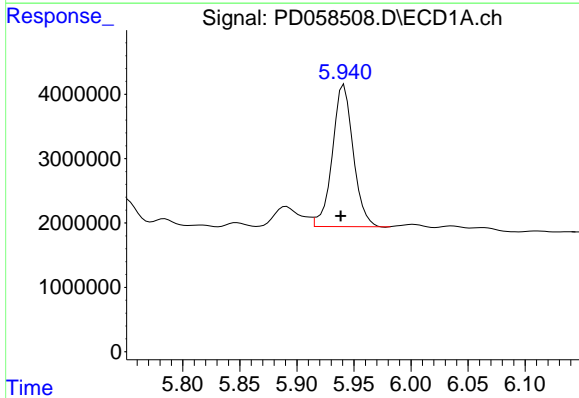


#14 Endrin
 R.T.: 5.674 min
 Delta R.T.: 0.010 min
 Response: 6210293
 Conc: 4.36 ng/ml

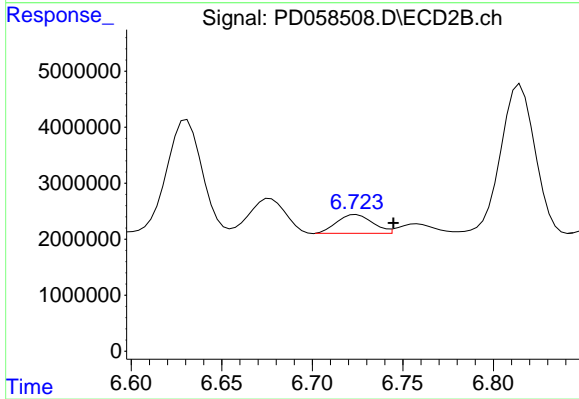
Instrument :
 ECD_D
 ClientSampled :



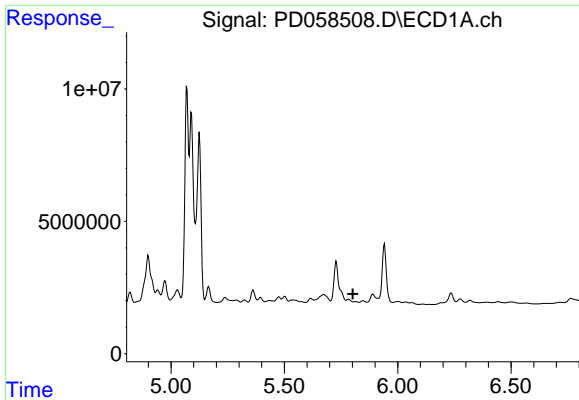
#14 Endrin
 R.T.: 6.557 min
 Delta R.T.: 0.022 min
 Response: 845092
 Conc: 0.40 ng/ml



#15 Endosulfan II
 R.T.: 5.941 min
 Delta R.T.: 0.003 min
 Response: 27946493
 Conc: 15.49 ng/ml

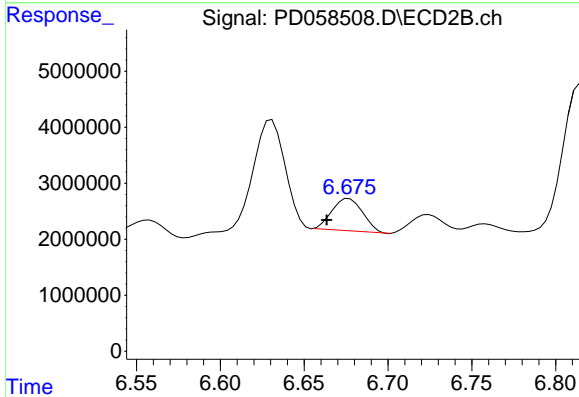


#15 Endosulfan II
 R.T.: 6.724 min
 Delta R.T.: -0.020 min
 Response: 4598702
 Conc: 1.86 ng/ml

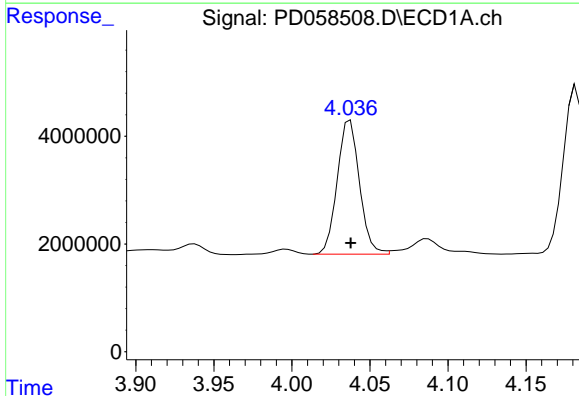


#16 4,4'-DDD
 R.T.: 0.000 min
 Exp R.T.: 5.802 min
 Response: 0
 Conc: N.D.

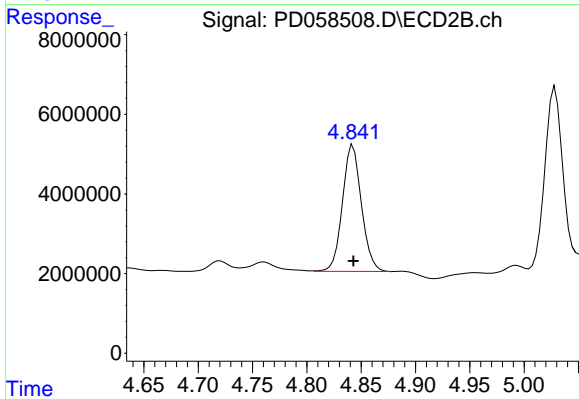
Instrument :
 ECD_D
 ClientSampleId :



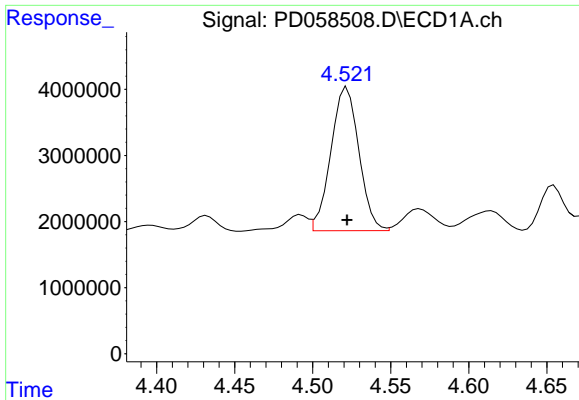
#16 4,4'-DDD
 R.T.: 6.677 min
 Delta R.T.: 0.013 min
 Response: 7359891
 Conc: 3.19 ng/ml



#23 Chlordane-1
 R.T.: 4.037 min
 Delta R.T.: 0.000 min
 Response: 24667397
 Conc: 422.73 ng/ml

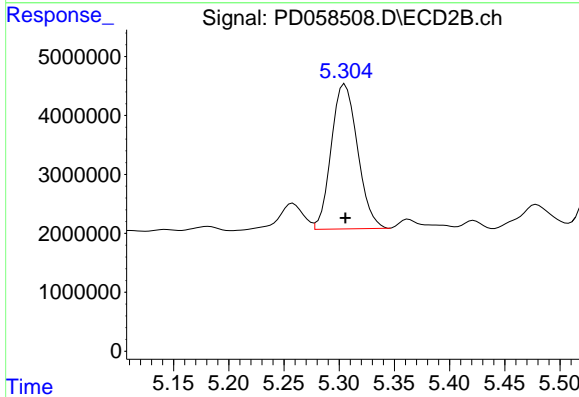


#23 Chlordane-1
 R.T.: 4.843 min
 Delta R.T.: 0.000 min
 Response: 38575225
 Conc: 433.42 ng/ml

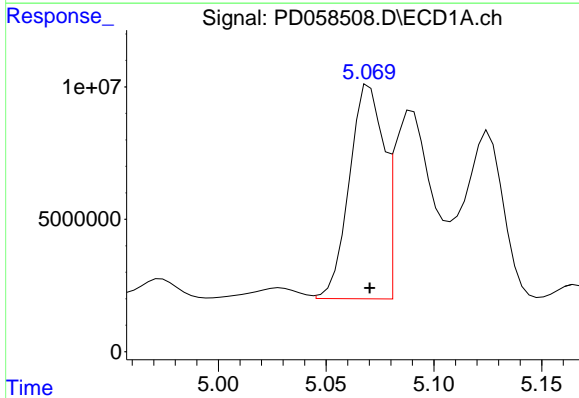


#24 Chlordane-2
 R.T.: 4.522 min
 Delta R.T.: 0.000 min
 Response: 27178450
 Conc: 420.45 ng/ml

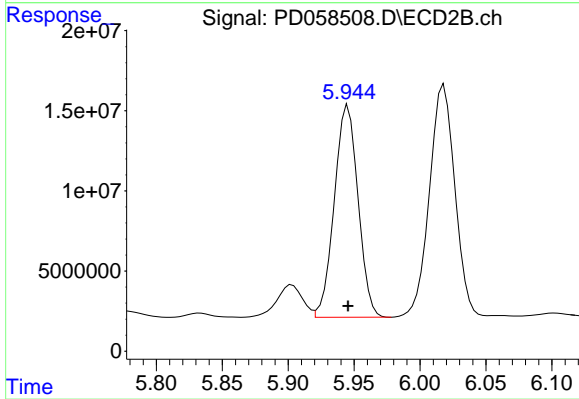
Instrument :
 ECD_D
 ClientSampleId :



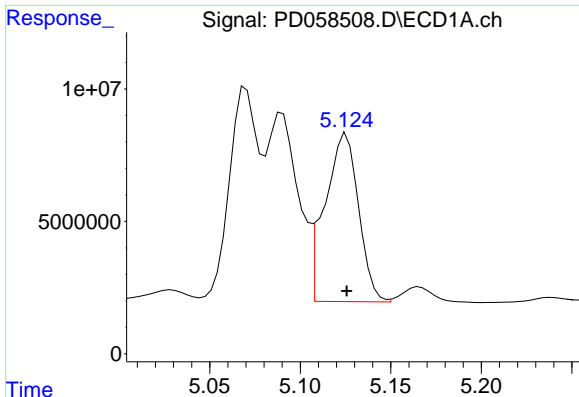
#24 Chlordane-2
 R.T.: 5.305 min
 Delta R.T.: 0.000 min
 Response: 40733561
 Conc: 412.34 ng/ml



#25 Chlordane-3
 R.T.: 5.070 min
 Delta R.T.: 0.000 min
 Response: 88552746
 Conc: 432.61 ng/ml



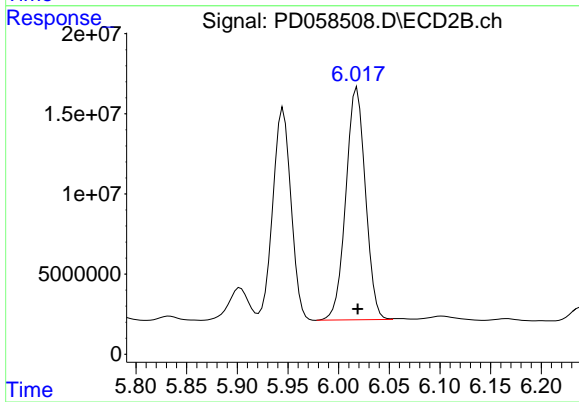
#25 Chlordane-3
 R.T.: 5.945 min
 Delta R.T.: 0.000 min
 Response: 165684253
 Conc: 445.45 ng/ml



#26 Chlordane-4

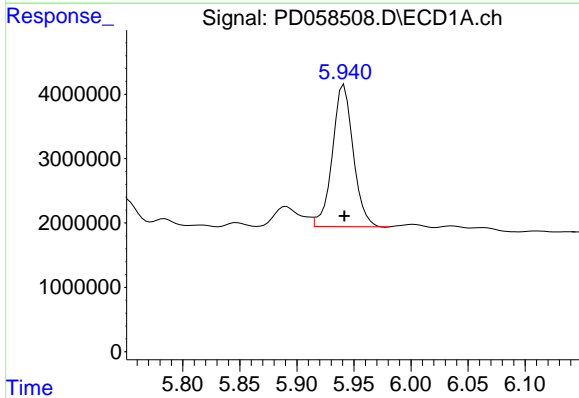
R.T.: 5.125 min
Delta R.T.: 0.000 min
Response: 81916810
Conc: 429.27 ng/ml

Instrument :
ECD_D
ClientSampleId :



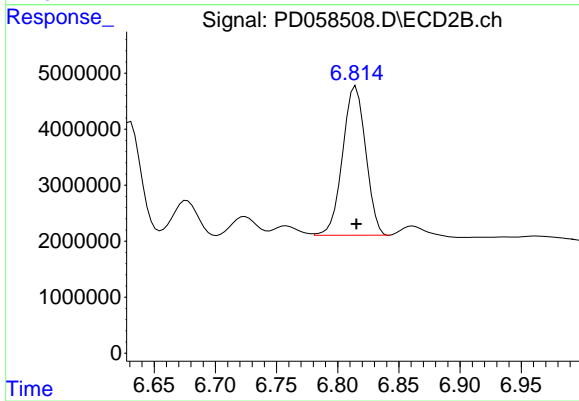
#26 Chlordane-4

R.T.: 6.018 min
Delta R.T.: 0.000 min
Response: 194328161
Conc: 446.73 ng/ml



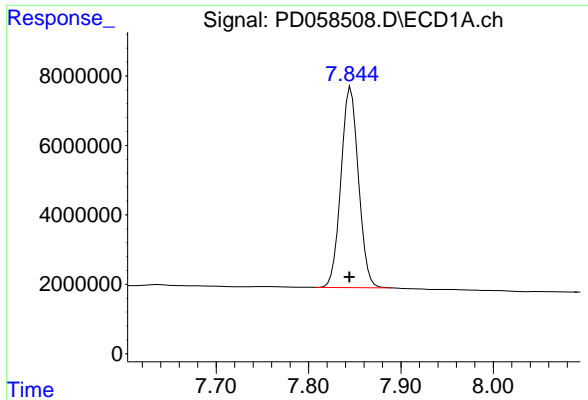
#27 Chlordane-5

R.T.: 5.941 min
Delta R.T.: 0.000 min
Response: 27946493
Conc: 454.77 ng/ml



#27 Chlordane-5

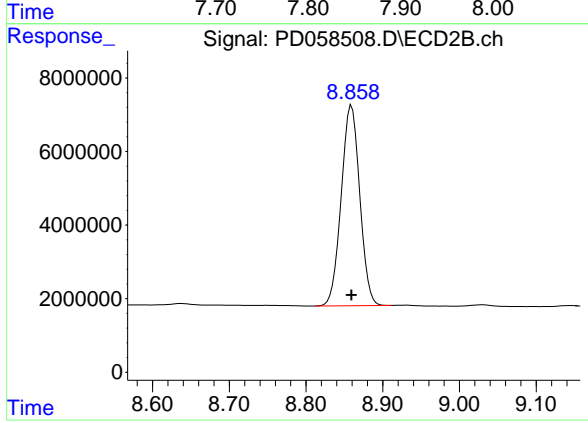
R.T.: 6.815 min
Delta R.T.: 0.000 min
Response: 34936186
Conc: 438.46 ng/ml



#28 Decachlorobiphenyl

R.T.: 7.846 min
Delta R.T.: 0.002 min
Response: 76052404
Conc: 42.11 ng/ml

Instrument :
ECD_D
ClientSampleId :



#28 Decachlorobiphenyl

R.T.: 8.859 min
Delta R.T.: 0.000 min
Response: 91828350
Conc: 42.12 ng/ml