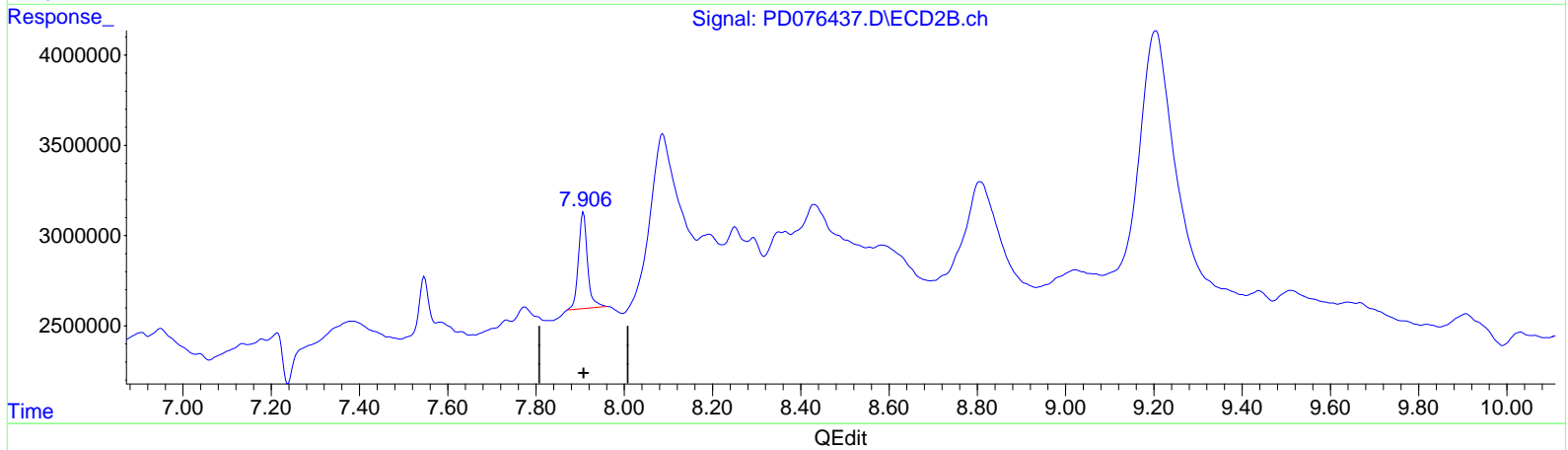
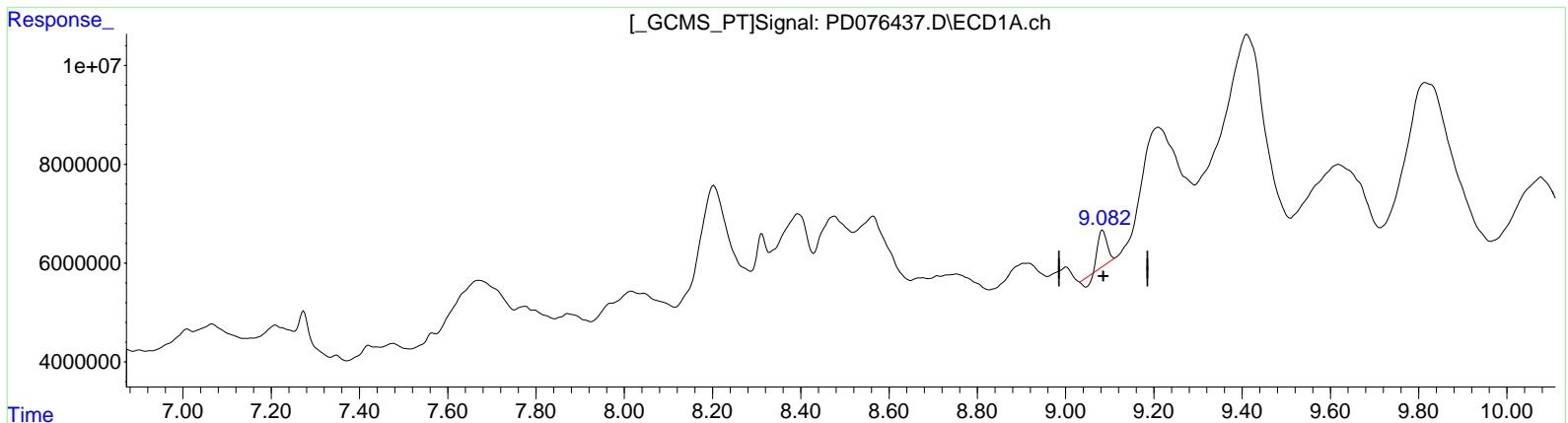


Quantitation Report (Qedit)

Data Path : Z:\pestpcbsrv\HPCHEM1\ECD\_D\Data\PD070923\  
Data File : PD076437.D  
Signal(s) : Signal #1: ECD1A.ch Signal #2: ECD2B.ch  
Acq On : 07 Jul 2023 20:15  
Operator : AR\AJ  
Sample : 03414-18  
Misc :  
ALS Vial : 30 Sample Multiplier: 1

Integration File signal 1: autoint1.e  
Integration File signal 2: autoint2.e  
Quant Time: Jul 08 03:02:36 2023  
Quant Method : Z:\pestpcbsrv\HPCHEM1\ECD\_D\Method\PD070523CLP.M  
Quant Title : GC Extractables  
QLast Update : Wed Jul 05 14:30:19 2023  
Response via : Initial Calibration  
Integrator: ChemStation

Volume Inj. : 1 µl  
Signal #1 Phase : ZB-MR1 Signal #2 Phase: ZB-MR2  
Signal #1 Info : 30M x 0.32mm x 0.5 Signal #2 Info : 30M x 0.32mm x 0.25µm



(27) Decachlorobiphenyl (SA)

9.084min 3.287 ng/ml

response 8336535

(27) Decachlorobiphenyl #2 (SA)

7.908min 8.305 ng/ml

response 7578049

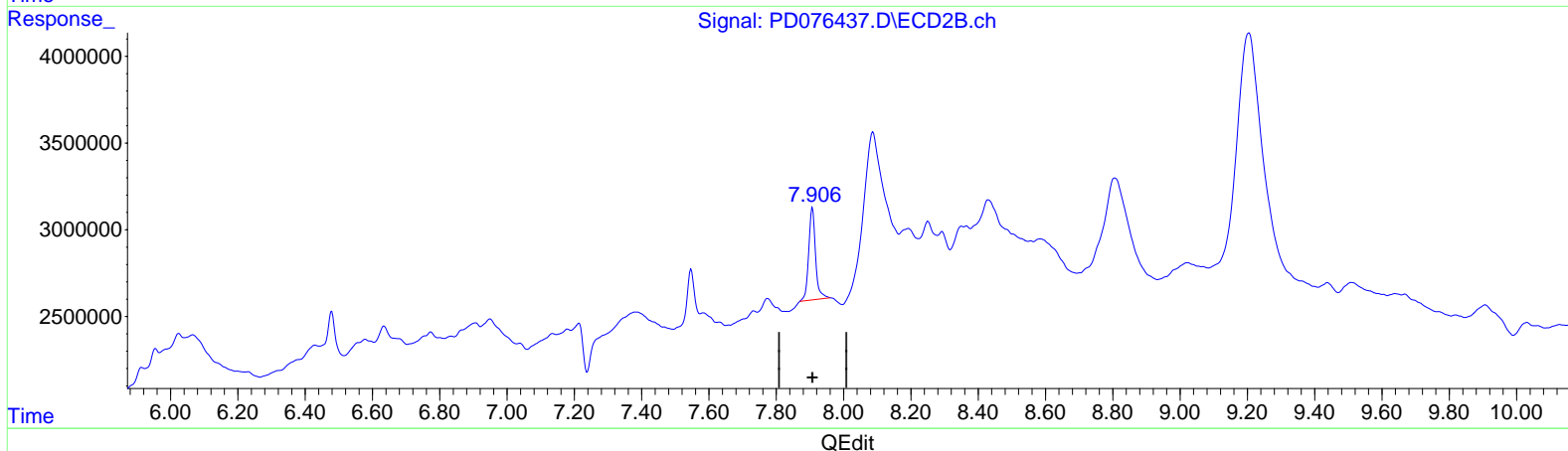
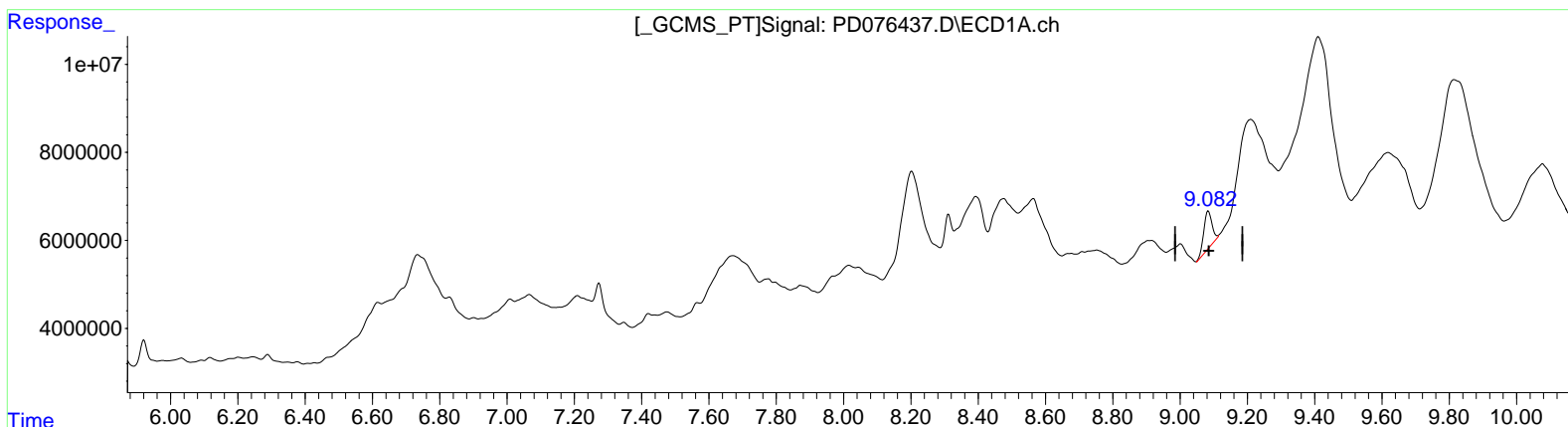
(+) = Expected Retention Time

Quantitation Report (Qedit)

Data Path : Z:\pestpcbsrv\HPCHEM1\ECD\_D\Data\PD070923\  
Data File : PD076437.D  
Signal(s) : Signal #1: ECD1A.ch Signal #2: ECD2B.ch  
Acq On : 07 Jul 2023 20:15  
Operator : AR\AJ  
Sample : 03414-18  
Misc :  
ALS Vial : 30 Sample Multiplier: 1

Integration File signal 1: autoint1.e  
Integration File signal 2: autoint2.e  
Quant Time: Jul 08 03:02:36 2023  
Quant Method : Z:\pestpcbsrv\HPCHEM1\ECD\_D\Method\PD070523CLP.M  
Quant Title : GC Extractables  
QLast Update : Wed Jul 05 14:30:19 2023  
Response via : Initial Calibration  
Integrator: ChemStation

Volume Inj. : 1 µl  
Signal #1 Phase : ZB-MR1 Signal #2 Phase: ZB-MR2  
Signal #1 Info : 30M x 0.32mm x0.5 Signal #2 Info : 30M x 0.32mm x 0.25µm



(27) Decachlorobiphenyl (SA)

9.082min 5.789 ng/ml m

response 14684167

(27) Decachlorobiphenyl #2 (SA)

7.908min 8.305 ng/ml

response 7578049

(+) = Expected Retention Time