

Data Path : Z:\pestpcbsrv\HPCHEM1\ECD\_D\Data\PD071019\  
 Data File : PD053947.D  
 Signal(s) : Signal #1: ECD1A.CH Signal #2: ECD2B.CH  
 Acq On : 10 Jul 2019 13:32  
 Operator : SM\AJ  
 Sample : K3673-05  
 Misc :  
 ALS Vial : 19 Sample Multiplier: 1

**Instrument :**  
 ECD\_D  
**ClientSampled :**  
 C5BB6

**Manual Integrations**  
**APPROVED**

Ankita  
 7/12/2019 10:06:27 AM

Integration File signal 1: autoint1.e  
 Integration File signal 2: autoint2.e  
 Quant Time: Jul 11 07:17:40 2019  
 Quant Method : Z:\pestpcbsrv\HPCHEM1\ECD\_D\Method\PD070319CLP.M  
 Quant Title : GC Extractables  
 QLast Update : Fri Jul 05 03:58:18 2019  
 Response via : Initial Calibration  
 Integrator: ChemStation 6890 Scale Mode: Large solvent peaks clipped

Volume Inj. : 1 µl  
 Signal #1 Phase : ZB-MR2 Signal #2 Phase: ZB-MR1  
 Signal #1 Info : 30M x 0.32mm x0.2 Signal #2 Info : 30M x 0.32mm x 0.50µm

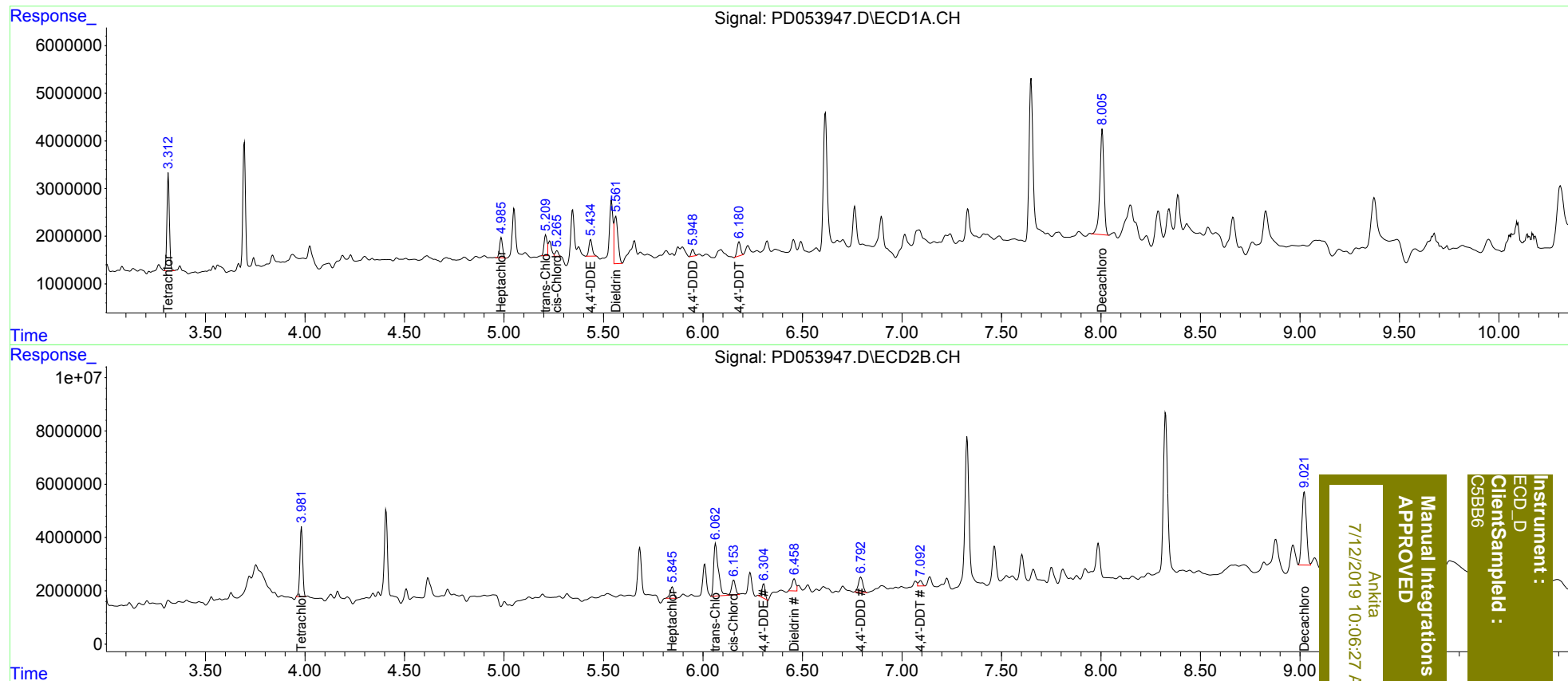
Compound	RT#1	RT#2	Resp#1	Resp#2	ng/ml	ng/ml
-----						
System Monitoring Compounds						
1) SA Tetrachlo...	3.313	3.983	17861470	25309591	23.410	22.441
27) SA Decachlor...	8.005	9.021	31633821	43610325	42.594m	41.739m
Target Compounds						
8) B Heptachlo...	4.987	5.845	4456586	5518132	4.826	3.845m
10) B trans-Chl...	5.209	6.063	4715378	32139198	4.926m	21.292 #
11) B cis-Chlor...	5.265	6.155	1244297	7504419	1.332m	5.096 #
12) B 4,4'-DDE	5.434	6.306	4055427	6198929	4.476m	4.405
13) MA Dieldrin	5.561	6.458	12843506	6592230	13.108m	4.448m#
16) A 4,4'-DDD	5.948	6.793	1463557	8917320	2.142m	8.019 #
17) MA 4,4'-DDT	6.180	7.092	3567367	2654645	4.978m	2.250m#
-----						

(f)=RT Delta > 1/2 Window (#)=Amounts differ by > 25% (m)=manual int.

Data Path : Z:\pestpcbsrv\HPCHEM1\ECD\_D\Data\PD071019\  
 Data File : PD053947.D  
 Signal(s) : Signal #1: ECD1A.CH Signal #2: ECD2B.CH  
 Acq On : 10 Jul 2019 13:32  
 Operator : SM\AJ  
 Sample : K3673-05  
 Misc :  
 ALS Vial : 19 Sample Multiplier: 1

Integration File signal 1: autoint1.e  
 Integration File signal 2: autoint2.e  
 Quant Time: Jul 11 07:17:40 2019  
 Quant Method : Z:\pestpcbsrv\HPCHEM1\ECD\_D\Method\PD070319CLP.M  
 Quant Title : GC Extractables  
 QLast Update : Fri Jul 05 03:58:18 2019  
 Response via : Initial Calibration  
 Integrator: ChemStation 6890 Scale Mode: Large solvent peaks clipped

Volume Inj. : 1 µl  
 Signal #1 Phase : ZB-MR2 Signal #2 Phase: ZB-MR1  
 Signal #1 Info : 30M x 0.32mm x0.2 Signal #2 Info : 30M x 0.32mm x 0.50µm



Instrument : ECD\_D  
 ClientSampleId : C5BB6  
 Manual Integrations APPROVED  
 Ankitia  
 7/12/2019 10:06:27 AM