

Data Path : Z:\pestpcbsrv\HPCHEM1\ECD_D\Data\PD071019\
 Data File : PD053952.D
 Signal(s) : Signal #1: ECD1A.CH Signal #2: ECD2B.CH
 Acq On : 10 Jul 2019 15:51
 Operator : SM\AJ
 Sample : K3673-10
 Misc :
 ALS Vial : 24 Sample Multiplier: 1

Instrument :
 ECD_D
ClientSampled :
 C5BD4

Manual Integrations
APPROVED
 Ankita
 7/12/2019 10:06:47 AM

Integration File signal 1: autoint1.e
 Integration File signal 2: autoint2.e
 Quant Time: Jul 11 07:19:41 2019
 Quant Method : Z:\pestpcbsrv\HPCHEM1\ECD_D\Method\PD070319CLP.M
 Quant Title : GC Extractables
 QLast Update : Fri Jul 05 03:58:18 2019
 Response via : Initial Calibration
 Integrator: ChemStation 6890 Scale Mode: Large solvent peaks clipped

Volume Inj. : 1 µl
 Signal #1 Phase : ZB-MR2 Signal #2 Phase: ZB-MR1
 Signal #1 Info : 30M x 0.32mm x0.2 Signal #2 Info : 30M x 0.32mm x 0.50µm

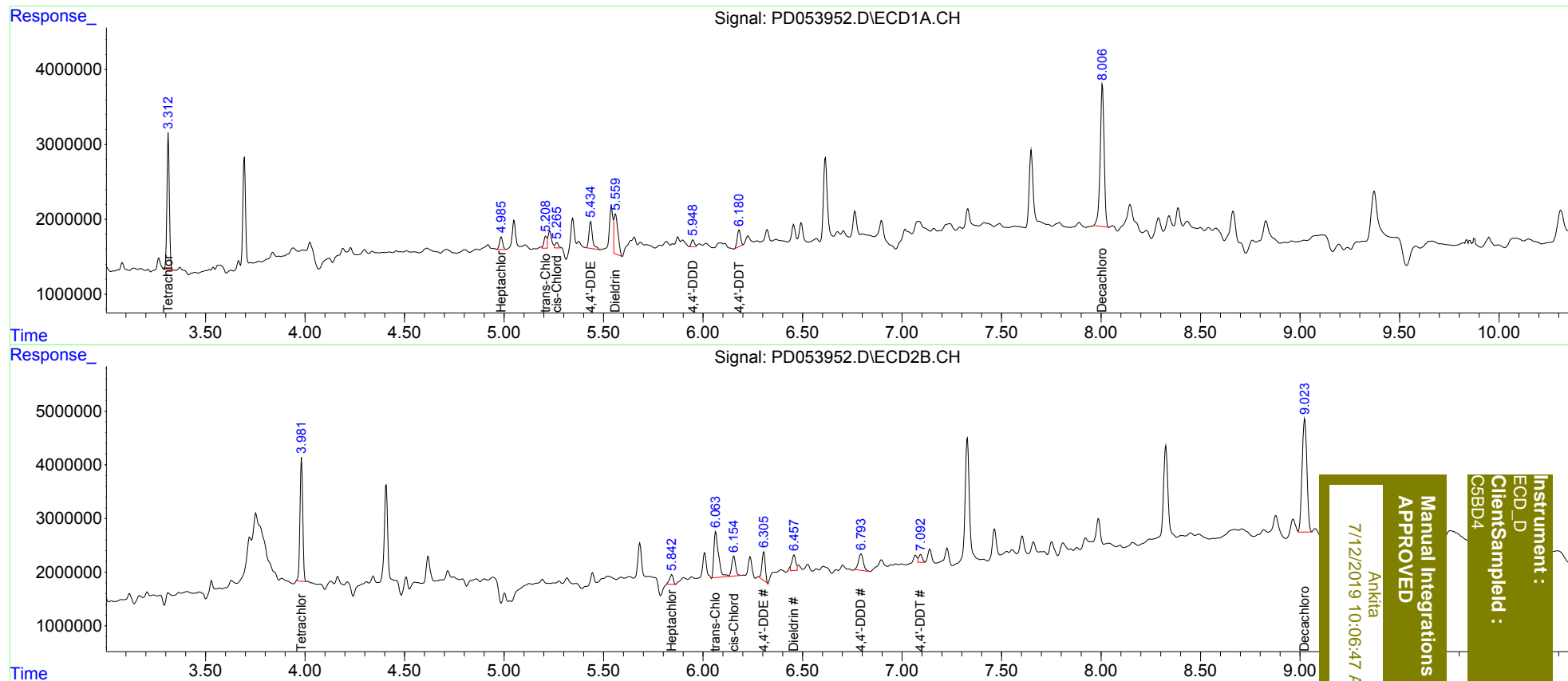
| Compound | RT#1 | RT#2 | Resp#1 | Resp#2 | ng/ml | ng/ml |
|-----------------------------|-------|-------|----------|----------|---------|---------|
| ----- | | | | | | |
| System Monitoring Compounds | | | | | | |
| 1) SA Tetrachlo... | 3.313 | 3.983 | 15488306 | 22213425 | 20.299 | 19.696 |
| 27) SA Decachlor... | 8.006 | 9.023 | 26126639 | 35480642 | 35.178m | 33.958m |
| Target Compounds | | | | | | |
| 8) B Heptachlo... | 4.985 | 5.842 | 1864452 | 2275963 | 2.019m | 1.586m |
| 10) B trans-Chl... | 5.208 | 6.064 | 1524093 | 13843408 | 1.592m | 9.171 # |
| 11) B cis-Chlor... | 5.265 | 6.155 | 819565 | 4961991 | 0.878m | 3.370 # |
| 12) B 4,4'-DDE | 5.436 | 6.306 | 4431630 | 6046459 | 4.891 | 4.296 |
| 13) MA Dieldrin | 5.559 | 6.457 | 7112010 | 3891763 | 7.258m | 2.626m# |
| 16) A 4,4'-DDD | 5.948 | 6.794 | 1031010 | 5263433 | 1.509m | 4.733 # |
| 17) MA 4,4'-DDT | 6.180 | 7.092 | 2636794 | 1893110 | 3.679m | 1.605m# |
| ----- | | | | | | |

(f)=RT Delta > 1/2 Window (#)=Amounts differ by > 25% (m)=manual int.

Data Path : Z:\pestpcbsrv\HPCHEM1\ECD_D\Data\PD071019\
 Data File : PD053952.D
 Signal(s) : Signal #1: ECD1A.CH Signal #2: ECD2B.CH
 Acq On : 10 Jul 2019 15:51
 Operator : SM\AJ
 Sample : K3673-10
 Misc :
 ALS Vial : 24 Sample Multiplier: 1

Integration File signal 1: autoint1.e
 Integration File signal 2: autoint2.e
 Quant Time: Jul 11 07:19:41 2019
 Quant Method : Z:\pestpcbsrv\HPCHEM1\ECD_D\Method\PD070319CLP.M
 Quant Title : GC Extractables
 QLast Update : Fri Jul 05 03:58:18 2019
 Response via : Initial Calibration
 Integrator: ChemStation 6890 Scale Mode: Large solvent peaks clipped

Volume Inj. : 1 µl
 Signal #1 Phase : ZB-MR2 Signal #2 Phase: ZB-MR1
 Signal #1 Info : 30M x 0.32mm x0.2 Signal #2 Info : 30M x 0.32mm x 0.50µm



Instrument : ECD_D
 ClientSampleId : CSBD4
 Manual Integrations APPROVED
 Ankitia
 7/12/2019 10:06:47 AM