

Data Path : Z:\pestpcbsrv\HPCHEM1\ECD_D\Data\PD071023\
 Data File : PD076484.D
 Signal(s) : Signal #1: ECD1A.ch Signal #2: ECD2B.ch
 Acq On : 11 Jul 2023 02:59
 Operator : AR\AJ
 Sample : 03548-01
 Misc :
 ALS Vial : 32 Sample Multiplier: 1

Instrument :
 ECD_D
 ClientSampleId :

Integration File signal 1: autoint1.e
 Integration File signal 2: autoint2.e
 Quant Time: Jul 11 05:18:56 2023
 Quant Method : Z:\pestpcbsrv\HPCHEM1\ECD_D\Method\PD070423.M
 Quant Title : GC Extractables
 QLast Update : Wed Jul 05 05:21:22 2023
 Response via : Initial Calibration
 Integrator: ChemStation

Volume Inj. : 2 µl
 Signal #1 Phase : ZB-MR2 Signal #2 Phase: ZB-MR2
 Signal #1 Info : 30M x 0.32mm x0.5 Signal #2 Info : 30M x 0.32mm x 0.25µm

Compound	RT#1	RT#2	Resp#1	Resp#2	ng/ml	ng/ml

System Monitoring Compounds						
1) SA Tetrachlo...	3.544	2.764	21505063	12403116	6.564	7.808
28) SA Decachlor...	9.086	7.907	21161352	9492238	5.952	7.542 #
Target Compounds						
2) A alpha-BHC	0.000	3.268	0	53337	N.D.	0.022 #
3) MA gamma-BHC...	0.000	3.604	0	18979	N.D.	0.009 #
4) MA Heptachlor	4.925	3.932	661897	114551	0.120	0.050 #
5) MB Aldrin	5.266	4.216	810633	357687	0.152	0.161
6) B beta-BHC	0.000	3.901	0	22824	N.D.	0.026 #
7) B delta-BHC	4.771	4.129	2184085	71649	0.425	0.034 #
8) B Heptachlo...	5.686	4.721	806855	14229	0.167	0.007 #
9) A Endosulfan I	6.078	5.096	77225	58258	0.017	0.031 #
10) B gamma-Chl...	5.953	4.969	4921036	1110557	1.012	0.558 #
11) B alpha-Chl...	6.035	5.031	9046495	2216659	1.883	1.115 #
12) B 4,4'-DDE	6.202	5.221	884089	384045	0.208	0.250
13) MA Dieldrin	6.356	5.355	144447	446573	0.031	0.227 #
14) MA Endrin	6.585	5.641	305370	-13023	0.077	N.D. #
15) B Endosulfa...	6.780f	5.928	241333	471045	0.065	0.304 #
16) A 4,4'-DDD	6.733	5.776	59182	12899	0.018	0.011 #
17) MA 4,4'-DDT	7.037	6.023	463679	622330	0.132	0.514 #
18) B Endrin al...	0.000	6.122f	0	116764	N.D.	0.102 #
19) B Endosulfa...	0.000	6.323	0	85190	N.D.	0.056 #
20) A Methoxychlor	0.000	6.615	0	3704	N.D.	0.006 #
21) B Endrin ke...	7.632f	6.835	330210	22333	0.079	0.013 #
22) Mirex	0.000	7.015	0	66162	N.D.	0.045 #
23) Chlordane-1	4.708	3.762	696527	383008	6.006	8.655 #
24) Chlordane-2	5.238	4.341	593858	360653	4.637	7.422 #
25) Chlordane-3	5.953	4.969	4921036	1110557	9.724	7.914
26) Chlordane-4	6.035	5.031	9046495	2216659	14.714	15.741
27) Chlordane-5	6.887	5.928	856853	471045	8.774	10.122

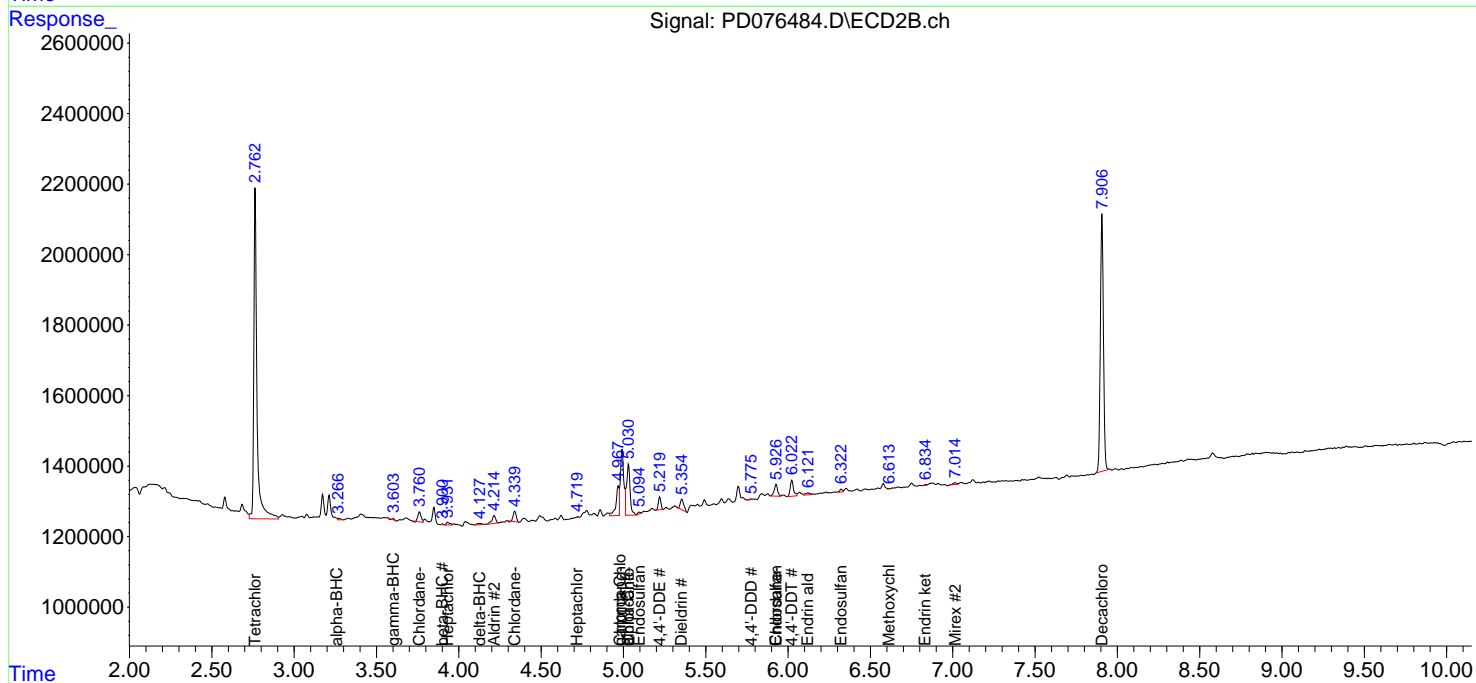
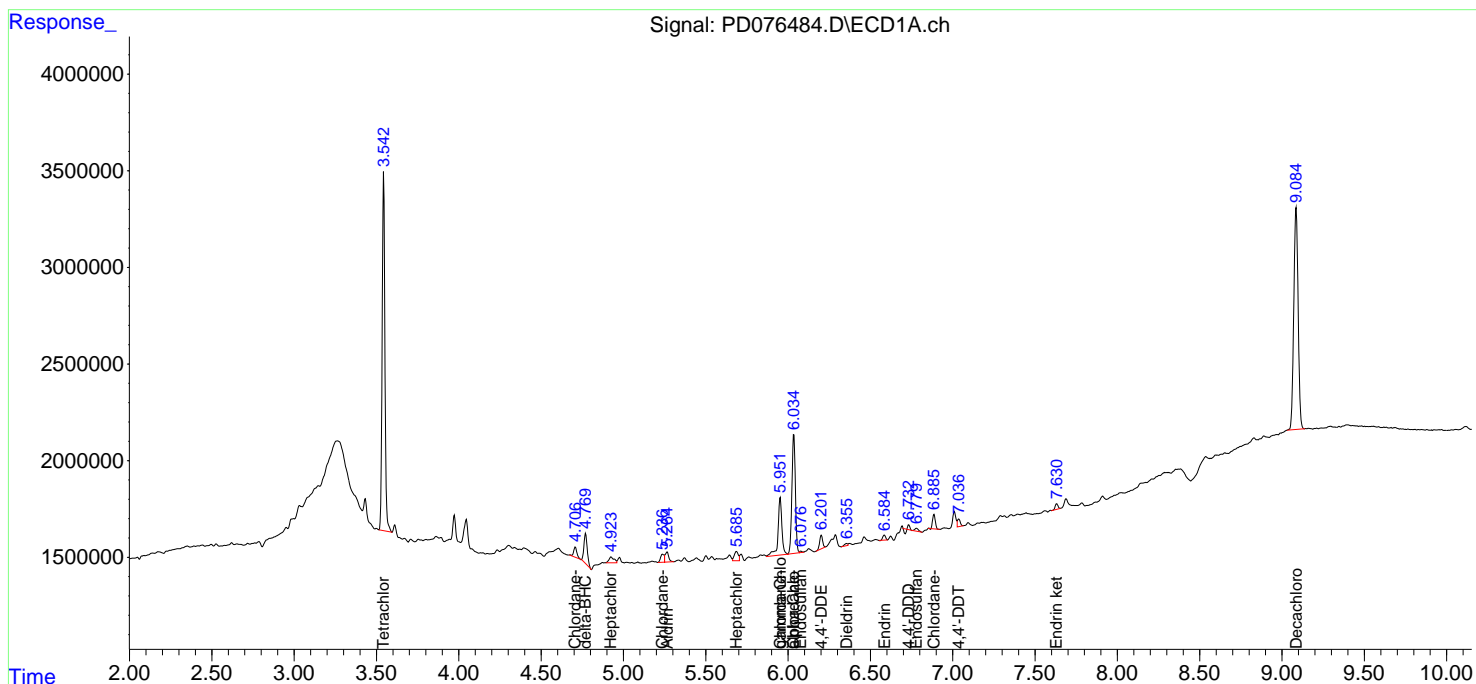
(f)=RT Delta > 1/2 Window (#)=Amounts differ by > 25% (m)=manual int.

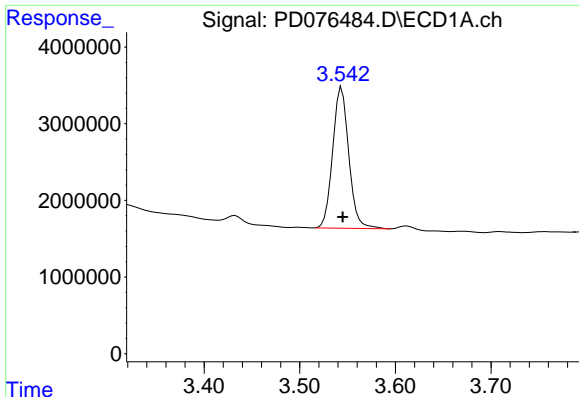
Data Path : Z:\pestpcbsrv\HPCHEM1\ECD_D\Data\PD071023\
 Data File : PD076484.D
 Signal(s) : Signal #1: ECD1A.ch Signal #2: ECD2B.ch
 Acq On : 11 Jul 2023 02:59
 Operator : AR\AJ
 Sample : 03548-01
 Misc :
 ALS Vial : 32 Sample Multiplier: 1

Instrument :
 ECD_D
 ClientSampleId :

Integration File signal 1: autoint1.e
 Integration File signal 2: autoint2.e
 Quant Time: Jul 11 05:18:56 2023
 Quant Method : Z:\pestpcbsrv\HPCHEM1\ECD_D\Method\PD070423.M
 Quant Title : GC Extractables
 QLast Update : Wed Jul 05 05:21:22 2023
 Response via : Initial Calibration
 Integrator: ChemStation

Volume Inj. : 2 µl
 Signal #1 Phase : ZB-MR1 Signal #2 Phase: ZB-MR2
 Signal #1 Info : 30M x 0.32mm x0.5 Signal #2 Info : 30M x 0.32mm x 0.25µm

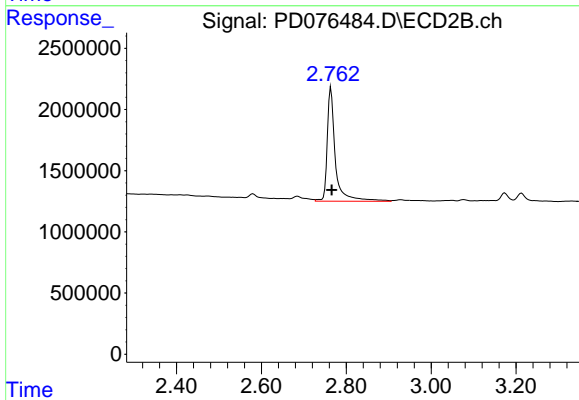




#1 Tetrachloro-m-xylene

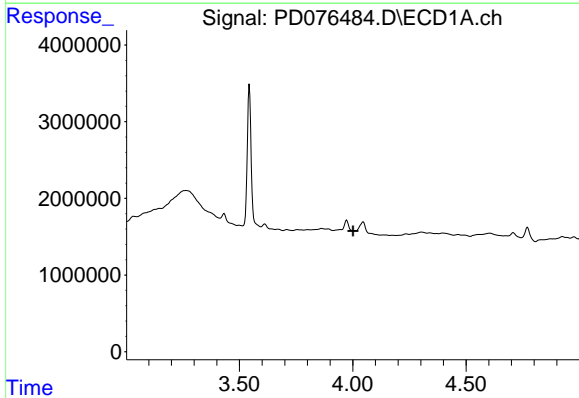
R.T.: 3.544 min
 Delta R.T.: -0.001 min
 Response: 21505063
 Conc: 6.56 ng/ml

Instrument :
 ECD_D
 ClientSampleId :



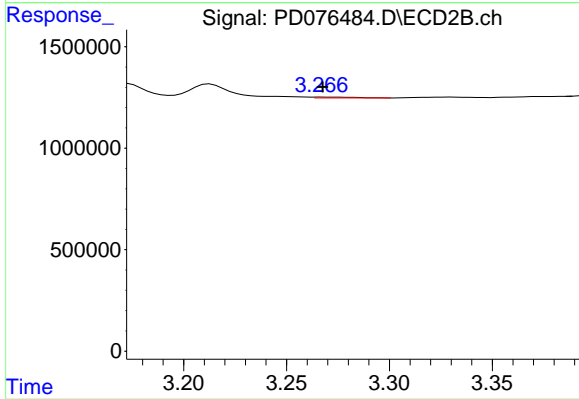
#1 Tetrachloro-m-xylene

R.T.: 2.764 min
 Delta R.T.: -0.001 min
 Response: 12403116
 Conc: 7.81 ng/ml



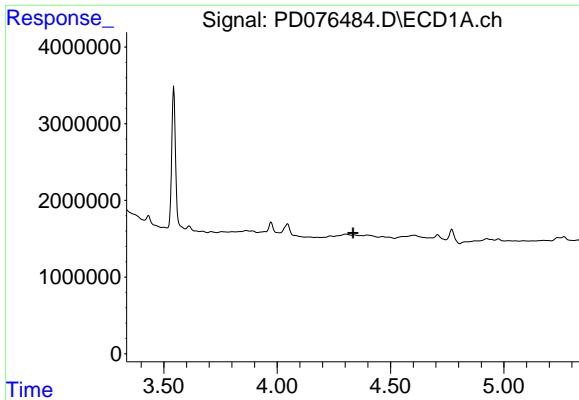
#2 alpha-BHC

R.T.: 0.000 min
 Exp R.T. : 4.002 min
 Response: 0
 Conc: N.D.



#2 alpha-BHC

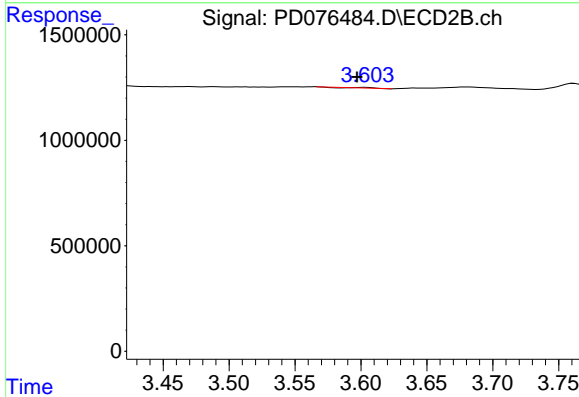
R.T.: 3.268 min
 Delta R.T.: 0.000 min
 Response: 53337
 Conc: 0.02 ng/ml



#3 gamma-BHC (Lindane)

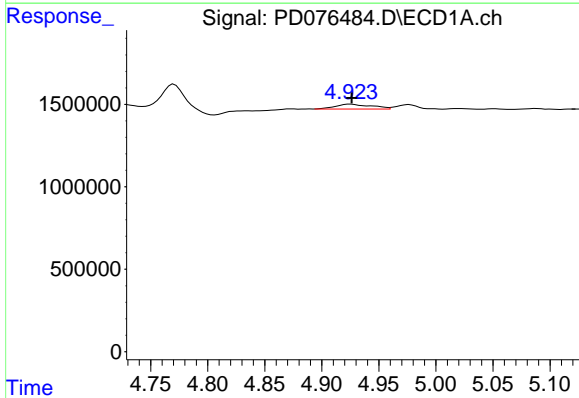
R.T.: 0.000 min
 Exp R.T.: 4.335 min
 Response: 0
 Conc: N.D.

Instrument :
 ECD_D
 ClientSampleId :



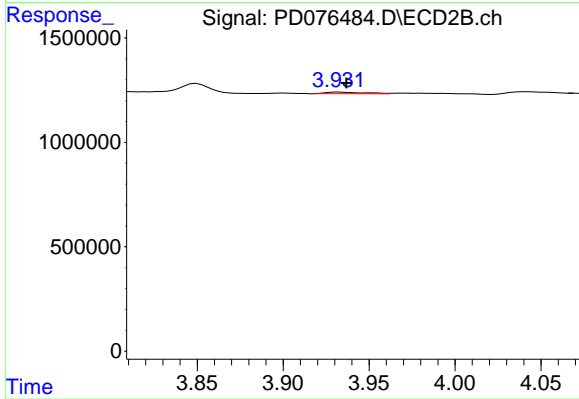
#3 gamma-BHC (Lindane)

R.T.: 3.604 min
 Delta R.T.: 0.007 min
 Response: 18979
 Conc: 0.01 ng/ml



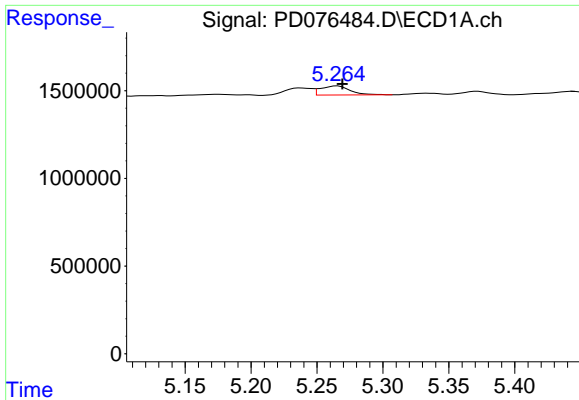
#4 Heptachlor

R.T.: 4.925 min
 Delta R.T.: -0.001 min
 Response: 661897
 Conc: 0.12 ng/ml



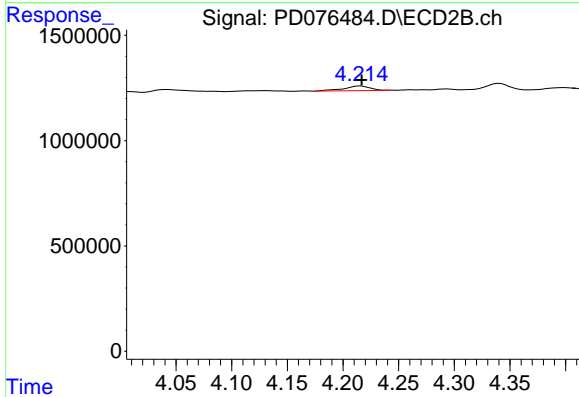
#4 Heptachlor

R.T.: 3.932 min
 Delta R.T.: -0.005 min
 Response: 114551
 Conc: 0.05 ng/ml

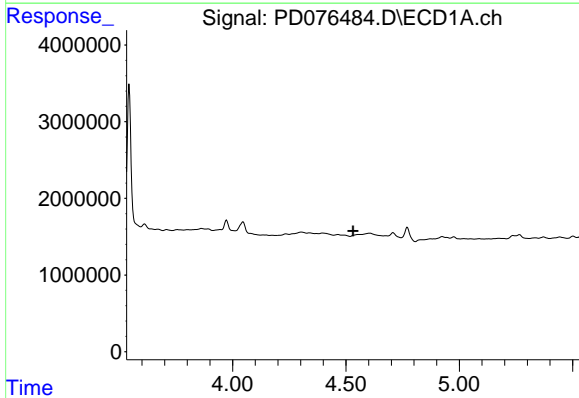


#5 Aldrin
 R.T.: 5.266 min
 Delta R.T.: -0.004 min
 Response: 810633
 Conc: 0.15 ng/ml

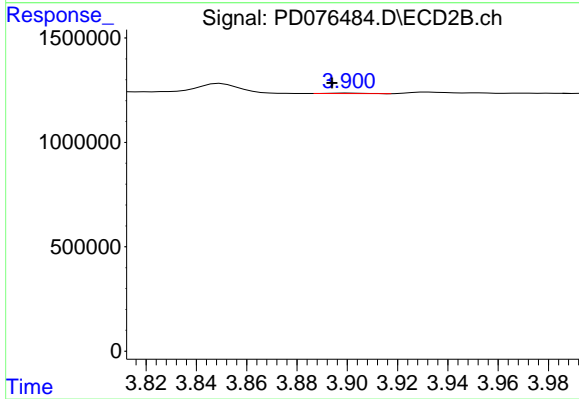
Instrument :
 ECD_D
 ClientSampleId :



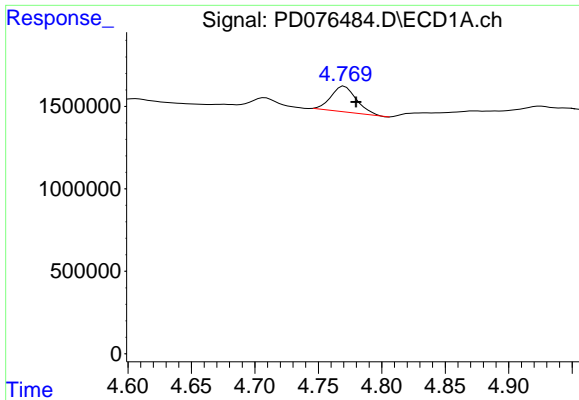
#5 Aldrin
 R.T.: 4.216 min
 Delta R.T.: -0.001 min
 Response: 357687
 Conc: 0.16 ng/ml



#6 beta-BHC
 R.T.: 0.000 min
 Exp R.T. : 4.531 min
 Response: 0
 Conc: N.D.



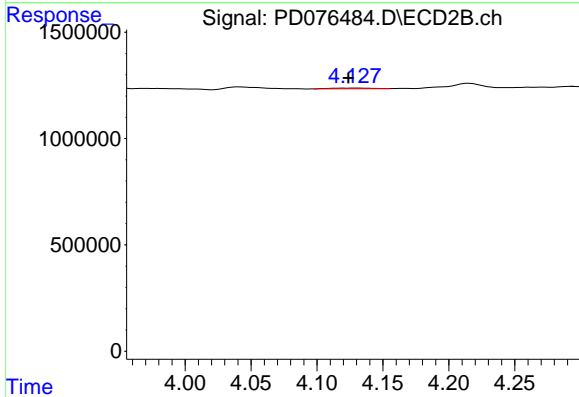
#6 beta-BHC
 R.T.: 3.901 min
 Delta R.T.: 0.007 min
 Response: 22824
 Conc: 0.03 ng/ml



#7 delta-BHC

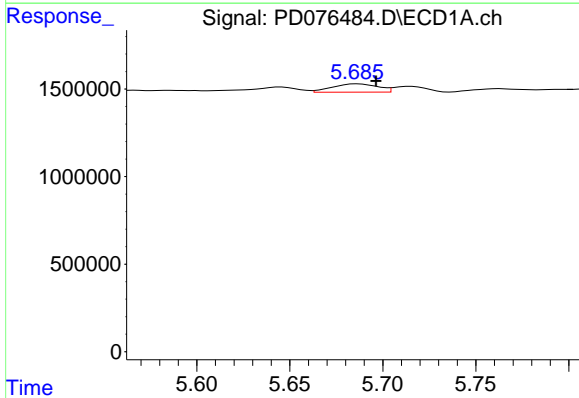
R.T.: 4.771 min
 Delta R.T.: -0.009 min
 Response: 2184085
 Conc: 0.42 ng/ml

Instrument :
 ECD_D
 ClientSampleId :



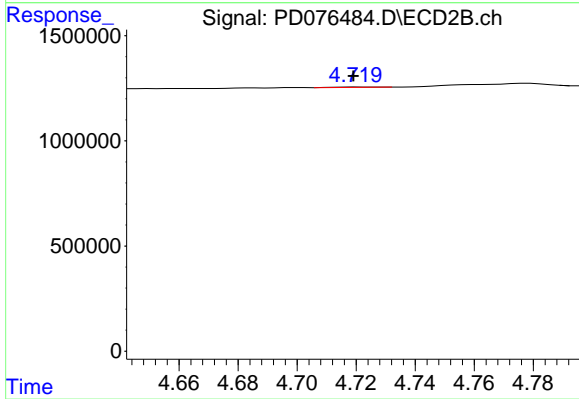
#7 delta-BHC

R.T.: 4.129 min
 Delta R.T.: 0.005 min
 Response: 71649
 Conc: 0.03 ng/ml



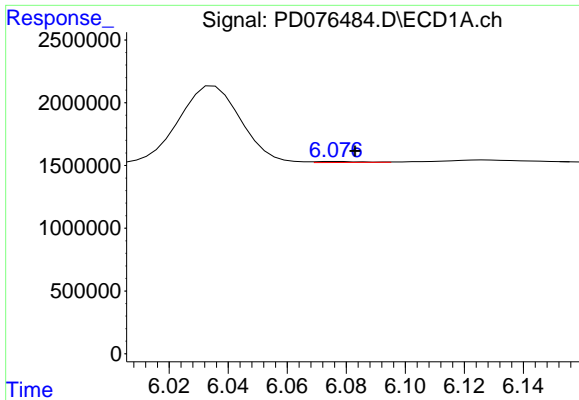
#8 Heptachlor epoxide

R.T.: 5.686 min
 Delta R.T.: -0.010 min
 Response: 806855
 Conc: 0.17 ng/ml



#8 Heptachlor epoxide

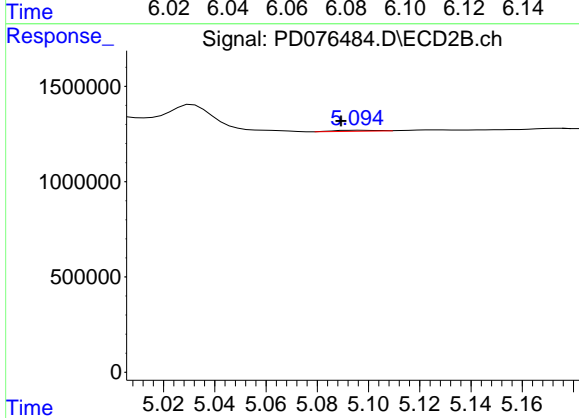
R.T.: 4.721 min
 Delta R.T.: 0.002 min
 Response: 14229
 Conc: 0.01 ng/ml



#9 Endosulfan I

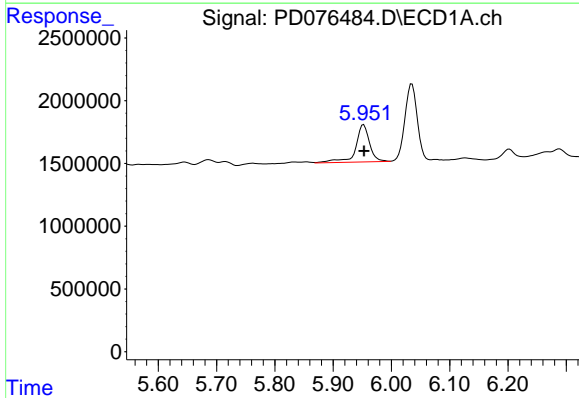
R.T.: 6.078 min
 Delta R.T.: -0.005 min
 Response: 77225
 Conc: 0.02 ng/ml

Instrument :
 ECD_D
 ClientSampleId :



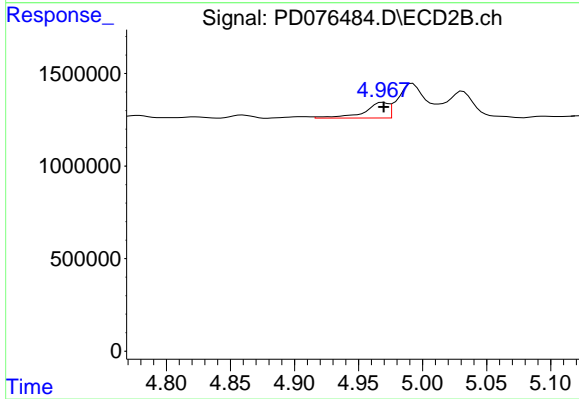
#9 Endosulfan I

R.T.: 5.096 min
 Delta R.T.: 0.007 min
 Response: 58258
 Conc: 0.03 ng/ml



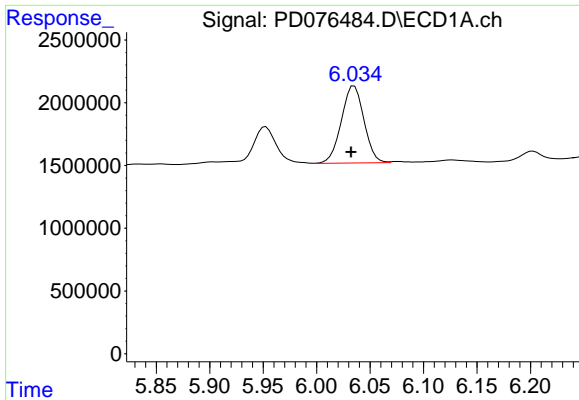
#10 gamma-Chlordane

R.T.: 5.953 min
 Delta R.T.: 0.000 min
 Response: 4921036
 Conc: 1.01 ng/ml



#10 gamma-Chlordane

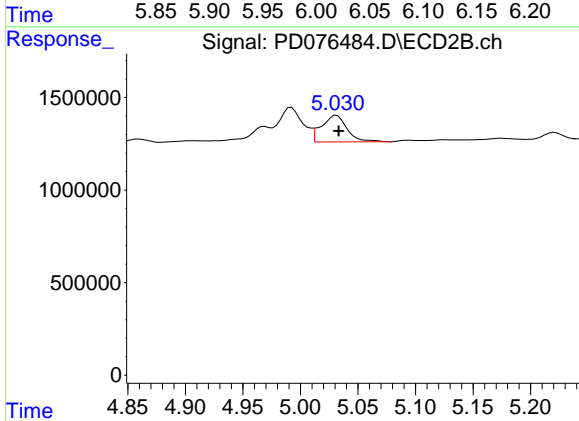
R.T.: 4.969 min
 Delta R.T.: 0.000 min
 Response: 1110557
 Conc: 0.56 ng/ml



#11 alpha-Chlordane

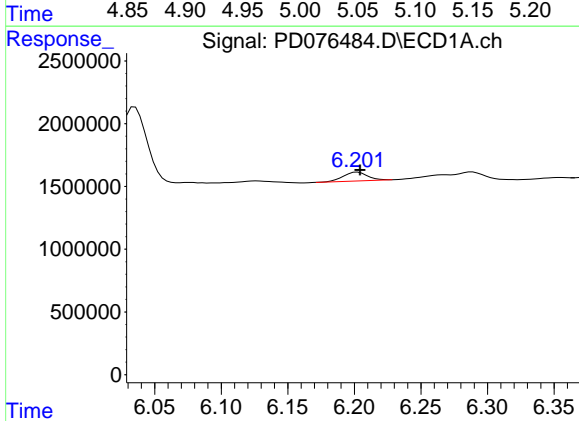
R.T.: 6.035 min
 Delta R.T.: 0.003 min
 Response: 9046495
 Conc: 1.88 ng/ml

Instrument :
 ECD_D
 ClientSampleId :



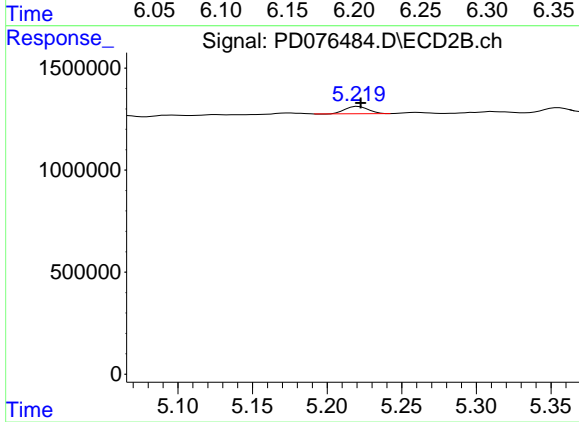
#11 alpha-Chlordane

R.T.: 5.031 min
 Delta R.T.: -0.002 min
 Response: 2216659
 Conc: 1.12 ng/ml



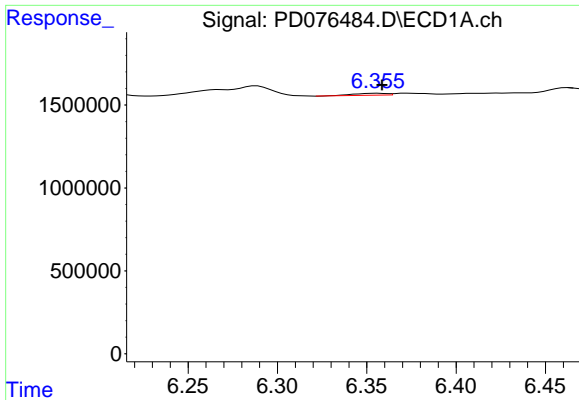
#12 4,4'-DDE

R.T.: 6.202 min
 Delta R.T.: -0.002 min
 Response: 884089
 Conc: 0.21 ng/ml



#12 4,4'-DDE

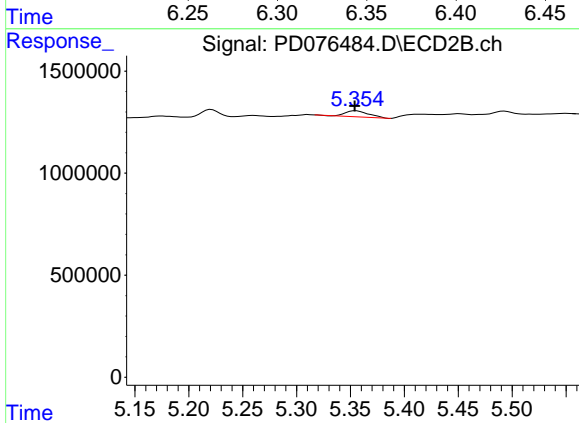
R.T.: 5.221 min
 Delta R.T.: -0.002 min
 Response: 384045
 Conc: 0.25 ng/ml



#13 Dieldrin

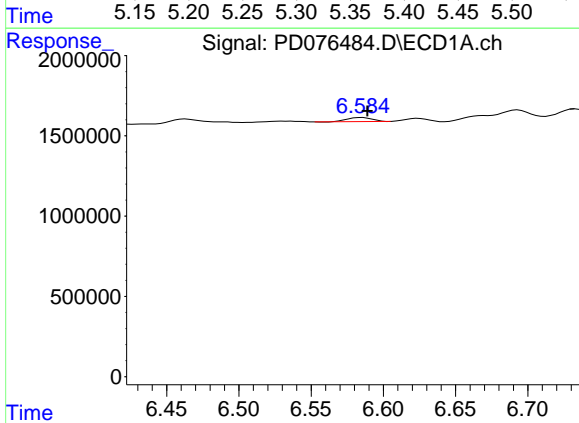
R.T.: 6.356 min
 Delta R.T.: -0.002 min
 Response: 144447
 Conc: 0.03 ng/ml

Instrument :
 ECD_D
 ClientSampleId :



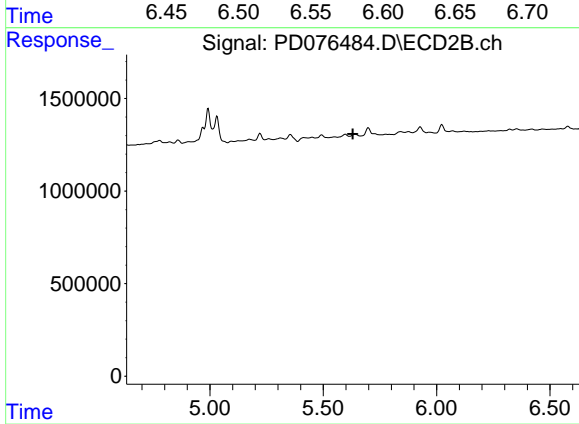
#13 Dieldrin

R.T.: 5.355 min
 Delta R.T.: 0.001 min
 Response: 446573
 Conc: 0.23 ng/ml



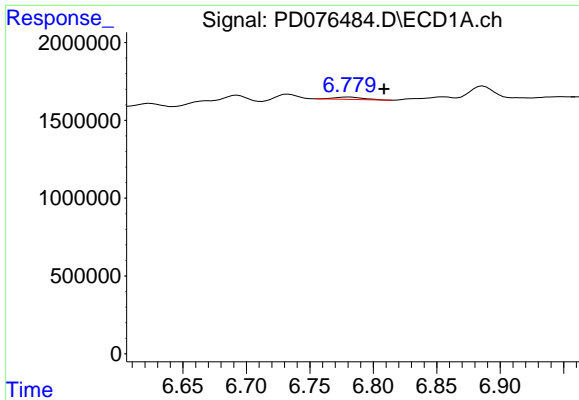
#14 Endrin

R.T.: 6.585 min
 Delta R.T.: -0.004 min
 Response: 305370
 Conc: 0.08 ng/ml



#14 Endrin

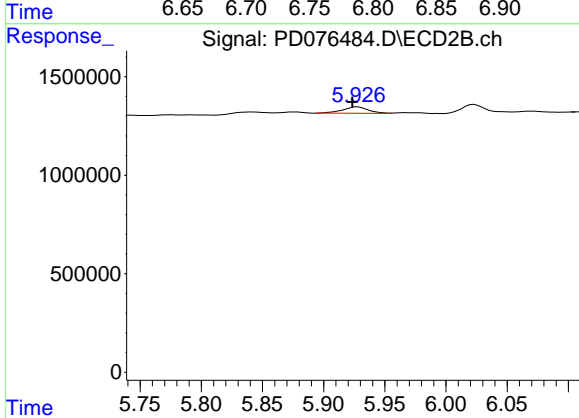
R.T.: 5.641 min
 Delta R.T.: 0.011 min
 Response: -13023
 Conc: N.D.



#15 Endosulfan II

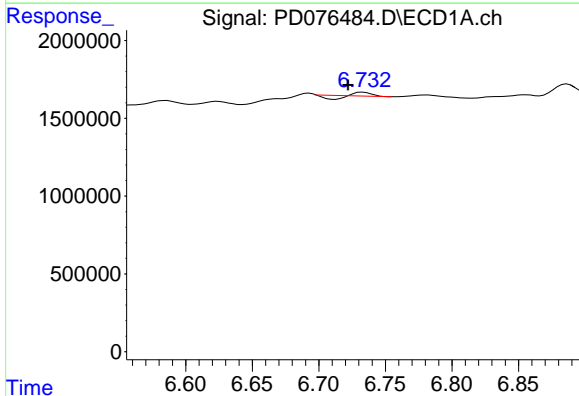
R.T.: 6.780 min
Delta R.T.: -0.028 min
Response: 241333
Conc: 0.06 ng/ml

Instrument :
ECD_D
ClientSampleId :



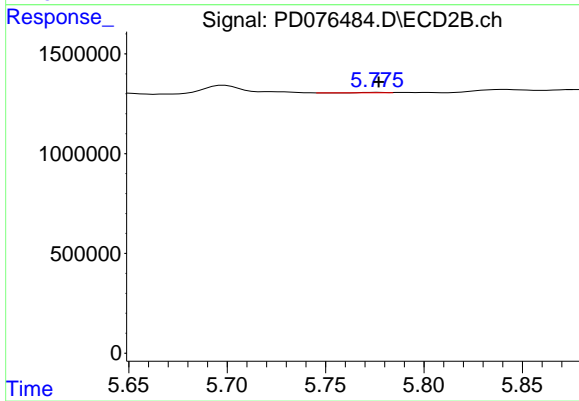
#15 Endosulfan II

R.T.: 5.928 min
Delta R.T.: 0.004 min
Response: 471045
Conc: 0.30 ng/ml



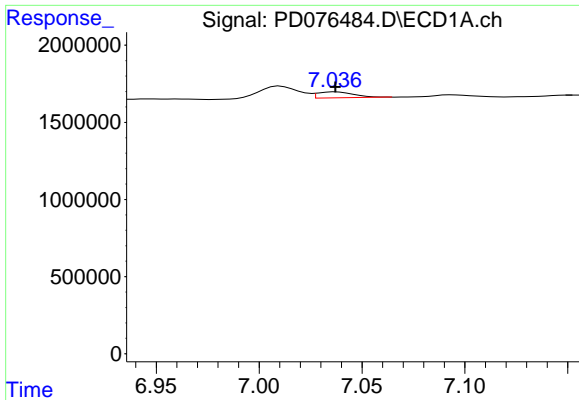
#16 4,4'-DDD

R.T.: 6.733 min
Delta R.T.: 0.011 min
Response: 59182
Conc: 0.02 ng/ml



#16 4,4'-DDD

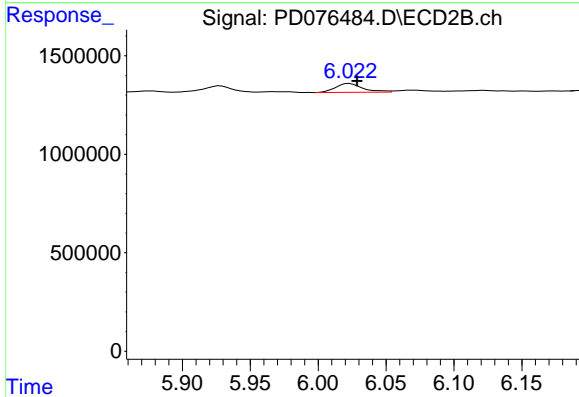
R.T.: 5.776 min
Delta R.T.: -0.001 min
Response: 12899
Conc: 0.01 ng/ml



#17 4,4'-DDT

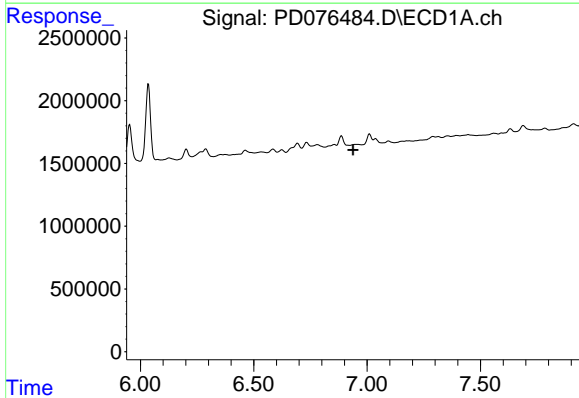
R.T.: 7.037 min
 Delta R.T.: 0.000 min
 Response: 463679
 Conc: 0.13 ng/ml

Instrument :
 ECD_D
 ClientSampleId :



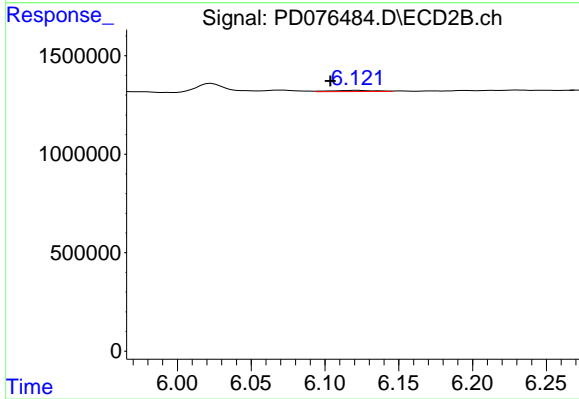
#17 4,4'-DDT

R.T.: 6.023 min
 Delta R.T.: -0.006 min
 Response: 622330
 Conc: 0.51 ng/ml



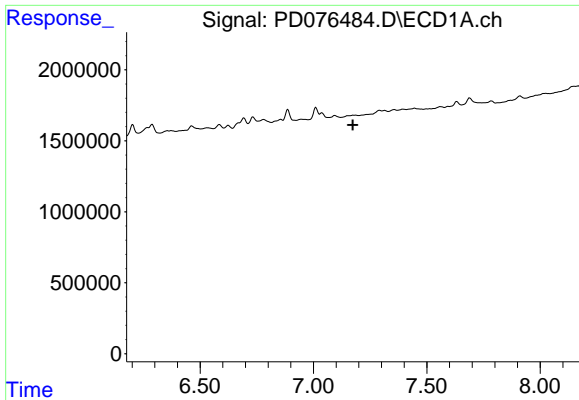
#18 Endrin aldehyde

R.T.: 0.000 min
 Exp R.T. : 6.938 min
 Response: 0
 Conc: N.D.



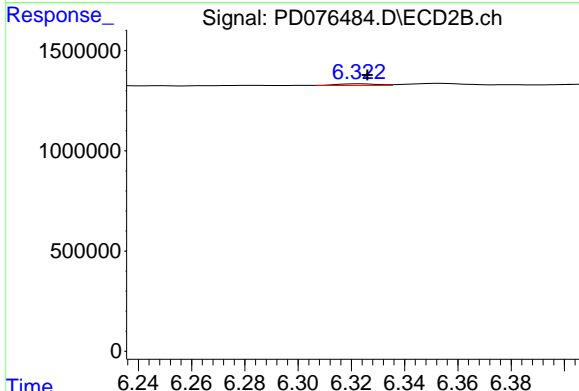
#18 Endrin aldehyde

R.T.: 6.122 min
 Delta R.T.: 0.018 min
 Response: 116764
 Conc: 0.10 ng/ml

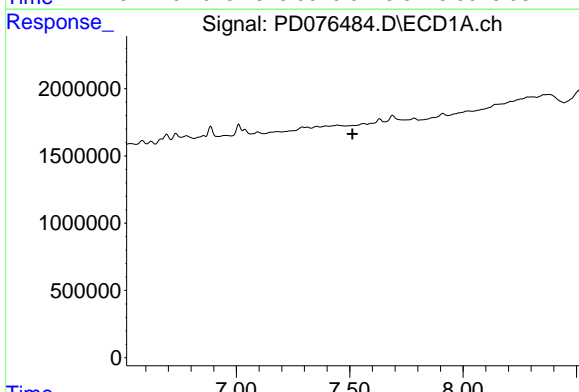


#19 Endosulfan Sulfate
 R.T.: 0.000 min
 Exp R.T. : 7.173 min
 Response: 0
 Conc: N.D.

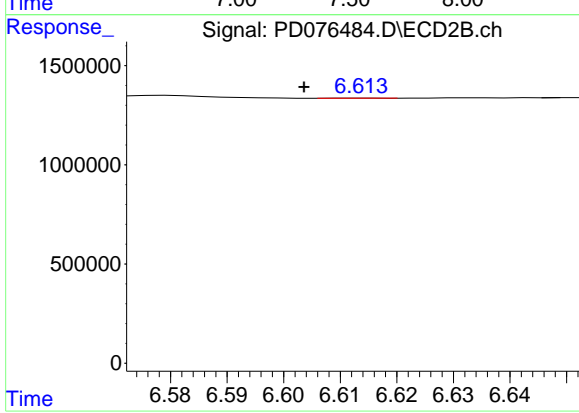
Instrument :
 ECD_D
 ClientSampleId :



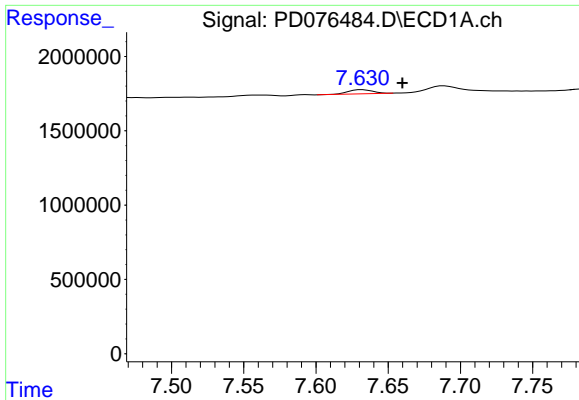
#19 Endosulfan Sulfate
 R.T.: 6.323 min
 Delta R.T.: -0.003 min
 Response: 85190
 Conc: 0.06 ng/ml



#20 Methoxychlor
 R.T.: 0.000 min
 Exp R.T. : 7.512 min
 Response: 0
 Conc: N.D.



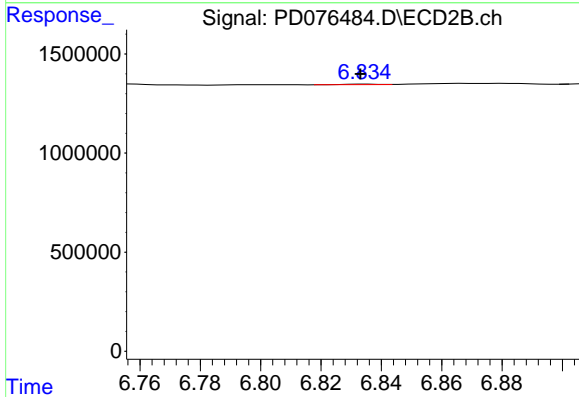
#20 Methoxychlor
 R.T.: 6.615 min
 Delta R.T.: 0.011 min
 Response: 3704
 Conc: 0.01 ng/ml



#21 Endrin ketone

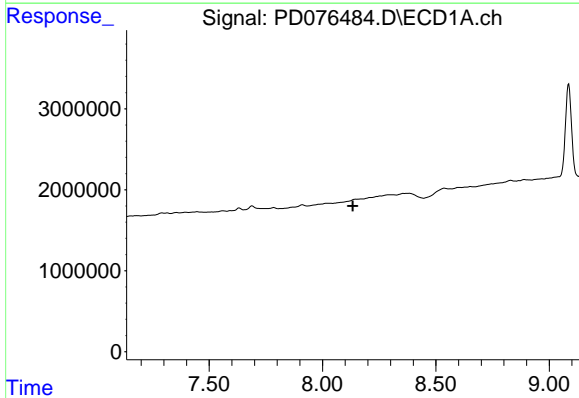
R.T.: 7.632 min
 Delta R.T.: -0.028 min
 Response: 330210
 Conc: 0.08 ng/ml

Instrument :
 ECD_D
 ClientSampleId :



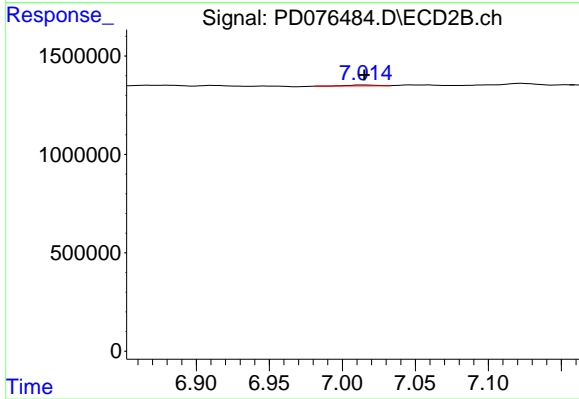
#21 Endrin ketone

R.T.: 6.835 min
 Delta R.T.: 0.002 min
 Response: 22333
 Conc: 0.01 ng/ml



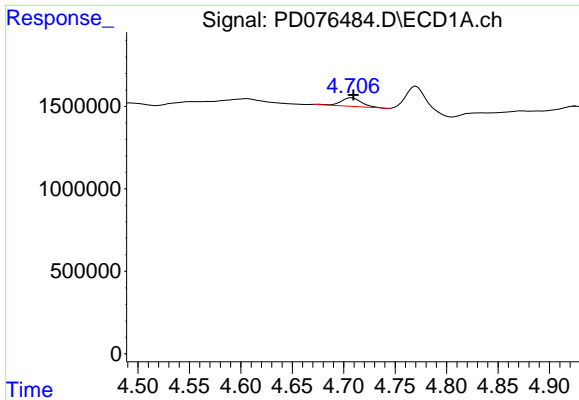
#22 Mirex

R.T.: 0.000 min
 Exp R.T. : 8.134 min
 Response: 0
 Conc: N.D.



#22 Mirex

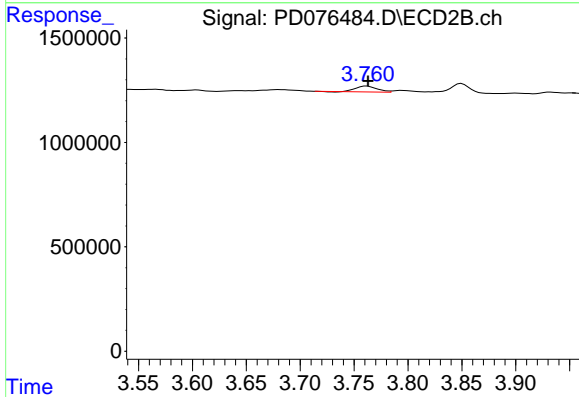
R.T.: 7.015 min
 Delta R.T.: 0.000 min
 Response: 66162
 Conc: 0.04 ng/ml



#23 Chlordane-1

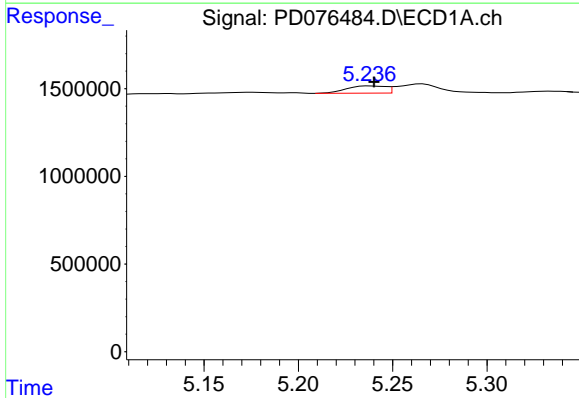
R.T.: 4.708 min
 Delta R.T.: -0.002 min
 Response: 696527
 Conc: 6.01 ng/ml

Instrument :
 ECD_D
 ClientSampleId :



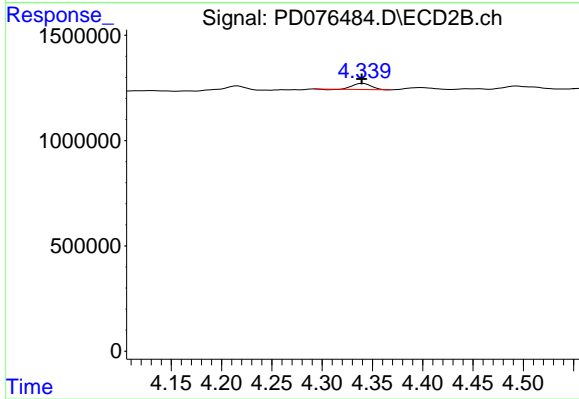
#23 Chlordane-1

R.T.: 3.762 min
 Delta R.T.: -0.001 min
 Response: 383008
 Conc: 8.66 ng/ml



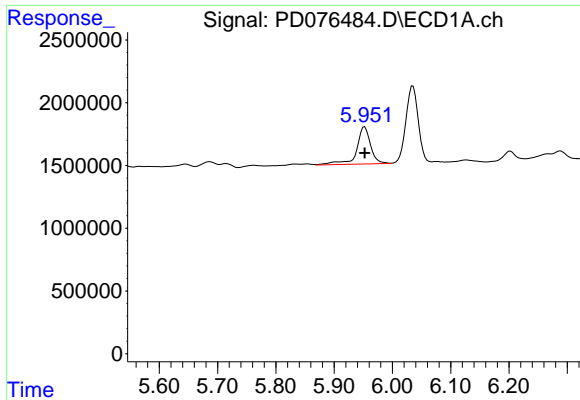
#24 Chlordane-2

R.T.: 5.238 min
 Delta R.T.: -0.003 min
 Response: 593858
 Conc: 4.64 ng/ml



#24 Chlordane-2

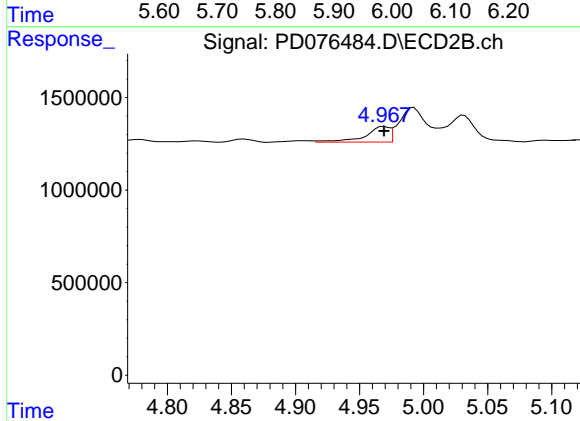
R.T.: 4.341 min
 Delta R.T.: 0.001 min
 Response: 360653
 Conc: 7.42 ng/ml



#25 Chlordane-3

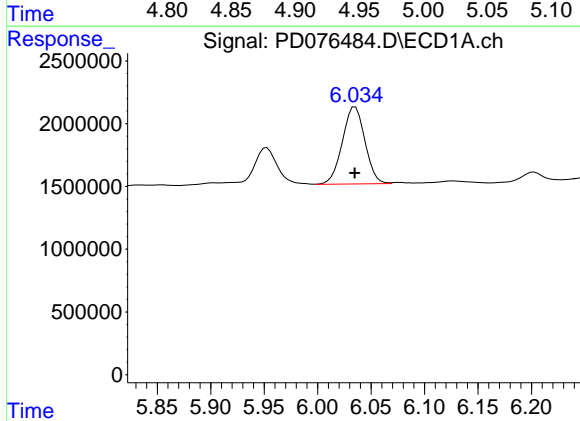
R.T.: 5.953 min
 Delta R.T.: 0.000 min
 Response: 4921036
 Conc: 9.72 ng/ml

Instrument :
 ECD_D
 ClientSampleId :



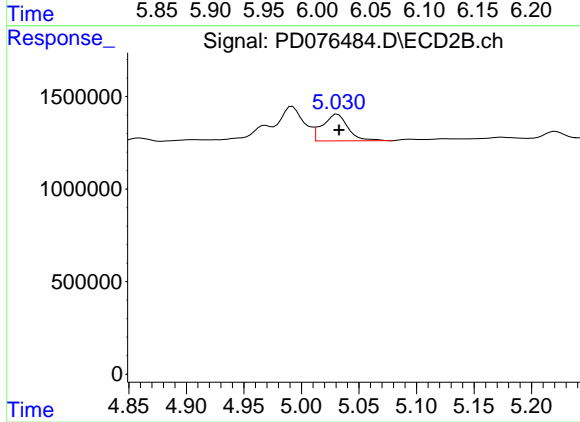
#25 Chlordane-3

R.T.: 4.969 min
 Delta R.T.: 0.000 min
 Response: 1110557
 Conc: 7.91 ng/ml



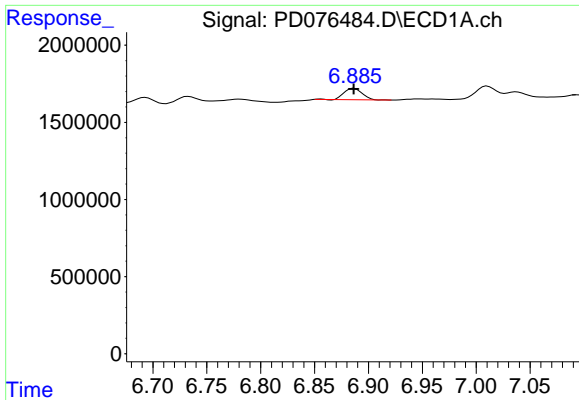
#26 Chlordane-4

R.T.: 6.035 min
 Delta R.T.: 0.000 min
 Response: 9046495
 Conc: 14.71 ng/ml



#26 Chlordane-4

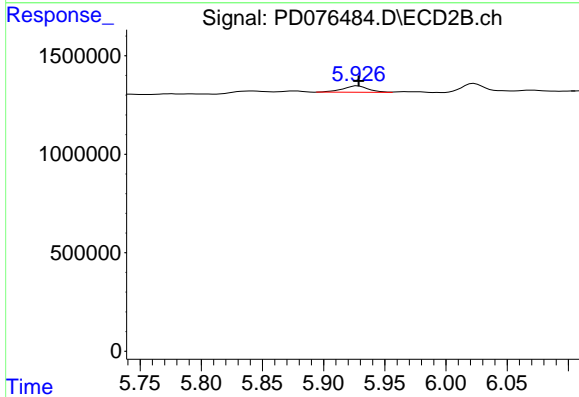
R.T.: 5.031 min
 Delta R.T.: -0.001 min
 Response: 2216659
 Conc: 15.74 ng/ml



#27 Chlordane-5

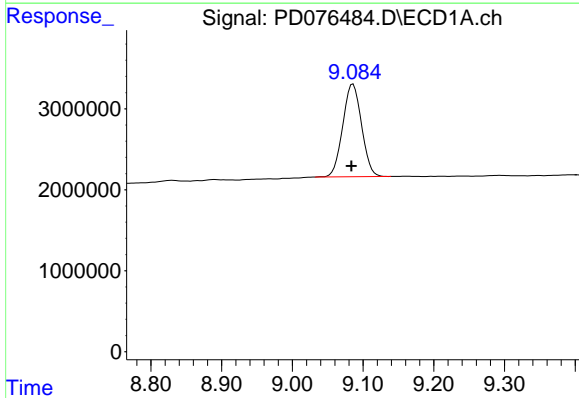
R.T.: 6.887 min
 Delta R.T.: 0.000 min
 Response: 856853
 Conc: 8.77 ng/ml

Instrument :
 ECD_D
 ClientSampleId :



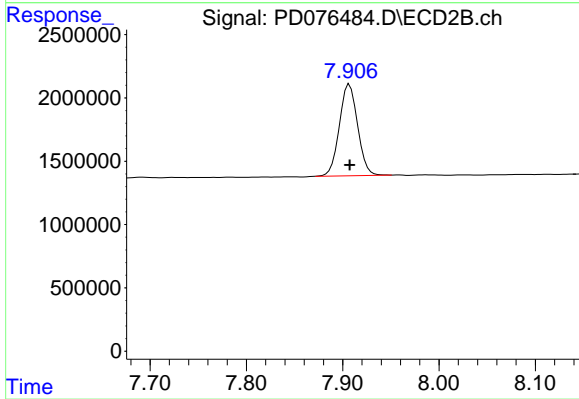
#27 Chlordane-5

R.T.: 5.928 min
 Delta R.T.: 0.000 min
 Response: 471045
 Conc: 10.12 ng/ml



#28 Decachlorobiphenyl

R.T.: 9.086 min
 Delta R.T.: 0.002 min
 Response: 21161352
 Conc: 5.95 ng/ml



#28 Decachlorobiphenyl

R.T.: 7.907 min
 Delta R.T.: 0.000 min
 Response: 9492238
 Conc: 7.54 ng/ml