

Data Path : Z:\pestpcbsrv\HPCHEM1\ECD_D\Data\PD071123\
 Data File : PD076549.D
 Signal(s) : Signal #1: ECD1A.ch Signal #2: ECD2B.ch
 Acq On : 12 Jul 2023 05:02
 Operator : AR\AJ
 Sample : PB154083BS
 Misc :
 ALS Vial : 51 Sample Multiplier: 1

Instrument :
 ECD_D
 ClientSampleId :

Integration File signal 1: autoint1.e
 Integration File signal 2: autoint2.e
 Quant Time: Jul 12 06:24:47 2023
 Quant Method : Z:\pestpcbsrv\HPCHEM1\ECD_D\Method\PD071123.M
 Quant Title : GC Extractables
 QLast Update : Wed Jul 12 01:40:01 2023
 Response via : Initial Calibration
 Integrator: ChemStation

Volume Inj. : 1 µl
 Signal #1 Phase : ZB-MR2 Signal #2 Phase: ZB-MR2
 Signal #1 Info : 30M x 0.32mm x0.5 Signal #2 Info : 30M x 0.32mm x 0.25µm

	Compound	RT#1	RT#2	Resp#1	Resp#2	ng/ml	ng/ml

System Monitoring Compounds							
1)	SA Tetrachlo...	3.545	2.765	40682211	19837361	18.593	18.017
28)	SA Decachlor...	9.085	7.907	48365687	20729965	19.139	20.030
Target Compounds							
2)	A alpha-BHC	4.001	3.267	203.4E6	85155967	53.216	51.502
3)	MA gamma-BHC...	4.335	3.596	185.7E6	79034623	50.906	49.340
4)	MA Heptachlor	4.926	3.936	194.3E6	80541499	53.706	51.689
5)	MB Aldrin	5.269	4.216	189.1E6	77910327	50.748	49.501
6)	B beta-BHC	4.532	3.894	76131207	33225130	50.463	50.230
7)	B delta-BHC	4.780	4.123	181.3E6	77114104	51.874	49.982
8)	B Heptachlo...	5.696	4.718	170.1E6	72129766	50.878	50.447
9)	A Endosulfan I	6.084	5.088	158.4E6	67644122	51.823	51.323
10)	B gamma-Chl...	5.953	4.969	171.7E6	72417691	52.254	51.427
11)	B alpha-Chl...	6.033	5.033	169.3E6	71743581	51.110	50.678
12)	B 4,4'-DDE	6.205	5.222	156.4E6	64373900	52.800	53.524
13)	MA Dieldrin	6.359	5.354	164.2E6	71437138	49.908	50.031
14)	MA Endrin	6.590	5.629	129.3E6	60331369	47.729	48.473
15)	B Endosulfa...	6.809	5.923	131.6E6	58401677	46.313	48.031
16)	A 4,4'-DDD	6.723	5.777	125.2E6	54536963	52.647	55.937
17)	MA 4,4'-DDT	7.038	6.028	123.1E6	51204201	52.555	54.621
18)	B Endrin al...	6.939	6.103	106.8E6	48417171	49.064	50.062
19)	B Endosulfa...	7.175	6.325	129.5E6	59787964	49.660	51.723
20)	A Methoxychlor	7.514	6.603	64408057	28173336	46.583	52.098
21)	B Endrin ke...	7.661	6.832	148.8E6	70009012	49.795	51.128
22)	Mirex	8.136	7.014	105.9E6	53992359	48.022	49.463
23)	Chlordane-1	0.000	3.759	0	22518	N.D.	0.057 #
24)	Chlordane-2	5.269f	4.349	189.1E6	75792	182.835	0.192 #
25)	Chlordane-3	5.953	4.969	171.7E6	72417691	36.034	53.783 #
26)	Chlordane-4	6.033	5.033	169.3E6	71743581	30.143	54.953 #
27)	Chlordane-5	0.000	5.923	0	58401677	N.D.	122.539 #

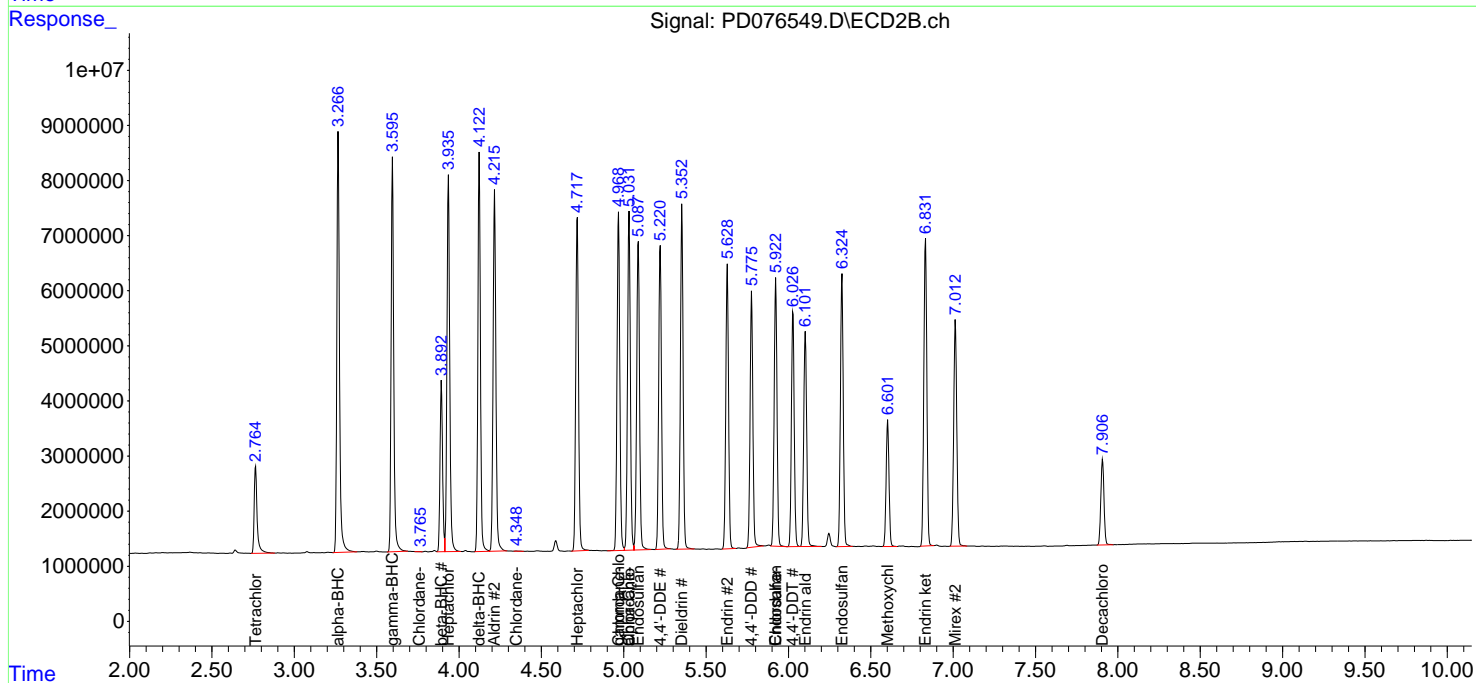
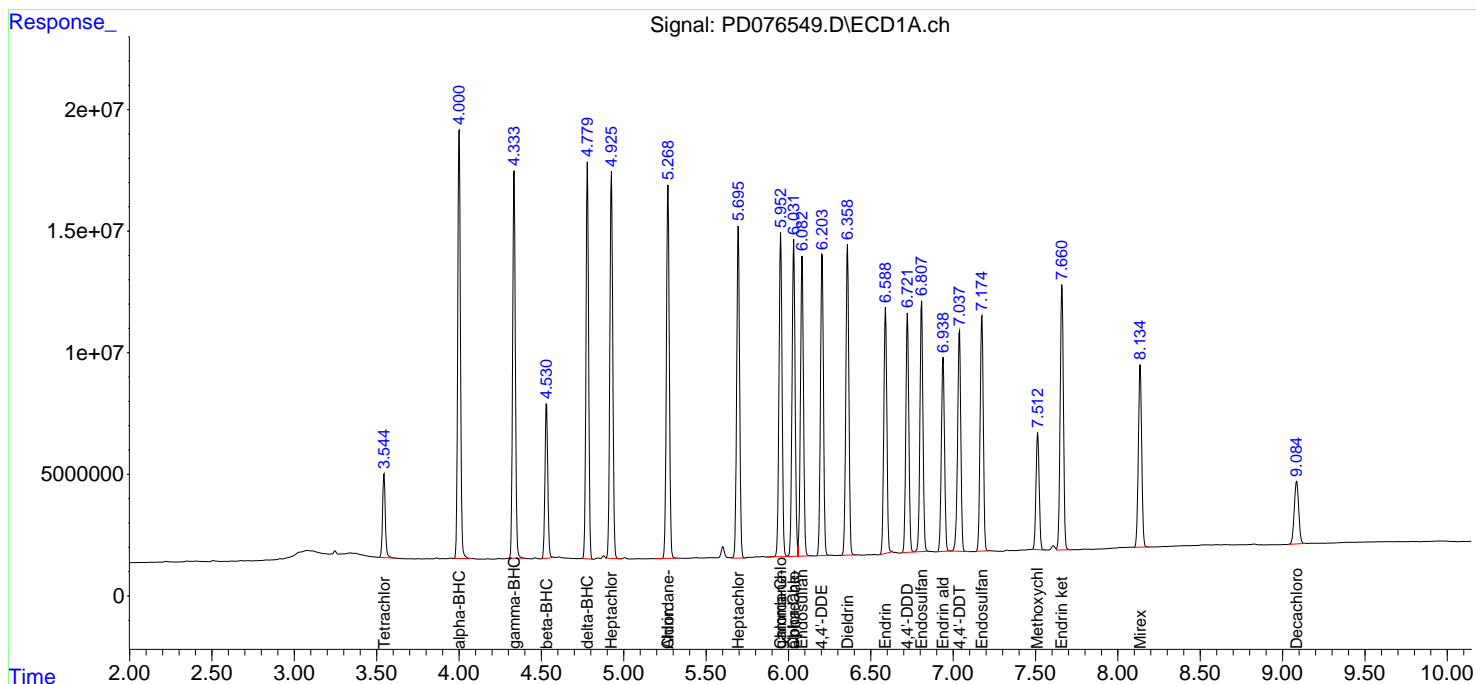
(f)=RT Delta > 1/2 Window (#)=Amounts differ by > 25% (m)=manual int.

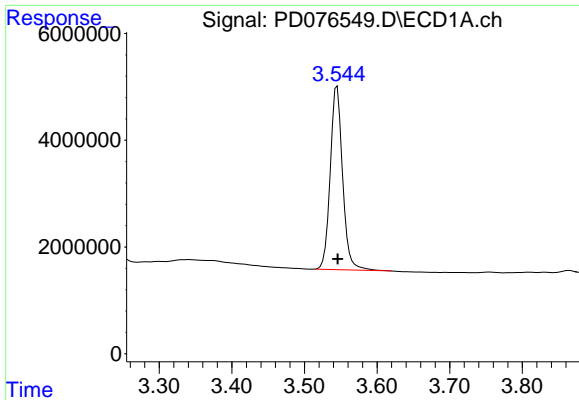
Data Path : Z:\pestpcbsrv\HPCHEM1\ECD_D\Data\PD071123\
 Data File : PD076549.D
 Signal(s) : Signal #1: ECD1A.ch Signal #2: ECD2B.ch
 Acq On : 12 Jul 2023 05:02
 Operator : AR\AJ
 Sample : PB154083BS
 Misc :
 ALS Vial : 51 Sample Multiplier: 1

Instrument :
 ECD_D
 ClientSampleId :

Integration File signal 1: autoint1.e
 Integration File signal 2: autoint2.e
 Quant Time: Jul 12 06:24:47 2023
 Quant Method : Z:\pestpcbsrv\HPCHEM1\ECD_D\Method\PD071123.M
 Quant Title : GC Extractables
 QLast Update : Wed Jul 12 01:40:01 2023
 Response via : Initial Calibration
 Integrator: ChemStation

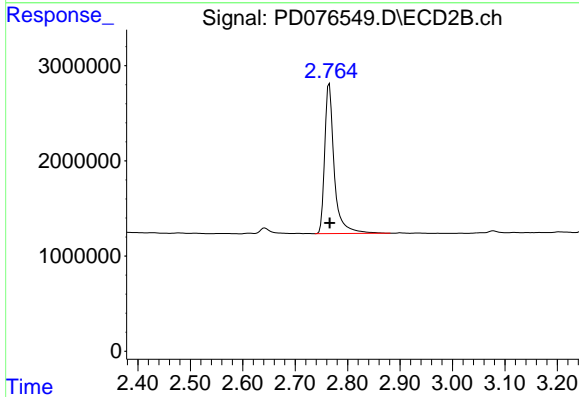
Volume Inj. : 1 µl
 Signal #1 Phase : ZB-MR1 Signal #2 Phase: ZB-MR2
 Signal #1 Info : 30M x 0.32mm x0.5 Signal #2 Info : 30M x 0.32mm x 0.25µm



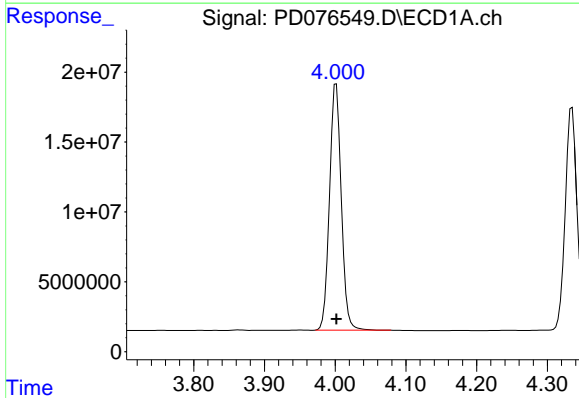


#1 Tetrachloro-m-xylene
 R.T.: 3.545 min
 Delta R.T.: 0.000 min
 Response: 40682211
 Conc: 18.59 ng/ml

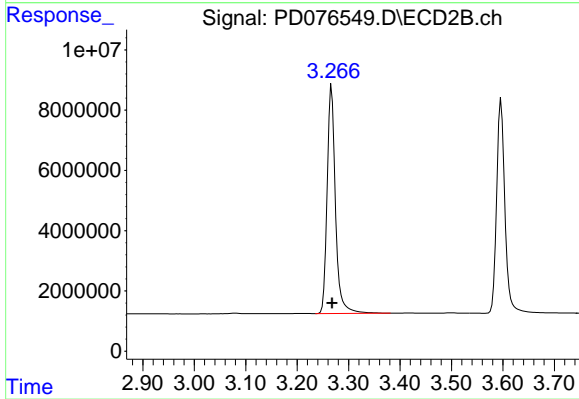
Instrument :
 ECD_D
 ClientSampleId :



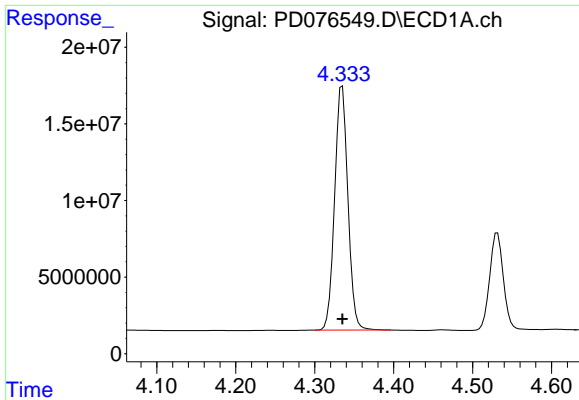
#1 Tetrachloro-m-xylene
 R.T.: 2.765 min
 Delta R.T.: 0.000 min
 Response: 19837361
 Conc: 18.02 ng/ml



#2 alpha-BHC
 R.T.: 4.001 min
 Delta R.T.: 0.000 min
 Response: 203439789
 Conc: 53.22 ng/ml



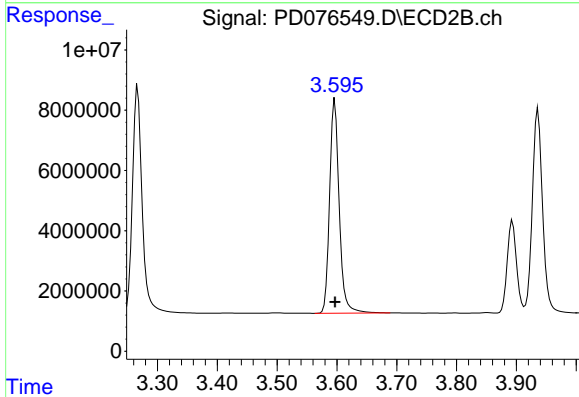
#2 alpha-BHC
 R.T.: 3.267 min
 Delta R.T.: 0.000 min
 Response: 85155967
 Conc: 51.50 ng/ml



#3 gamma-BHC (Lindane)

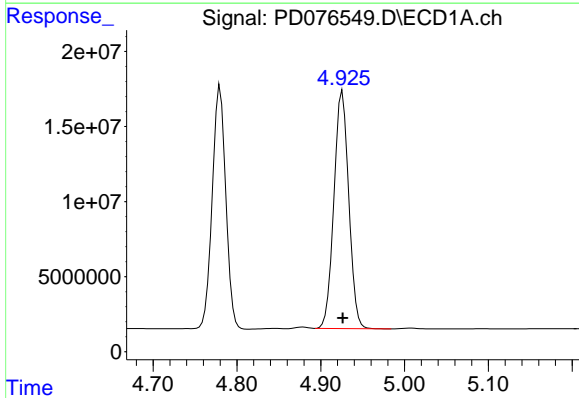
R.T.: 4.335 min
 Delta R.T.: 0.000 min
 Response: 185683820
 Conc: 50.91 ng/ml

Instrument :
 ECD_D
 ClientSampleId :



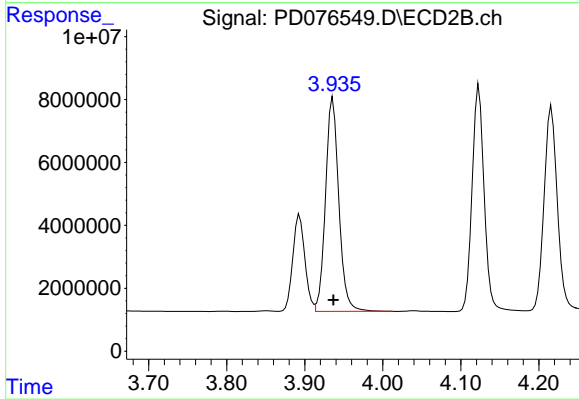
#3 gamma-BHC (Lindane)

R.T.: 3.596 min
 Delta R.T.: 0.000 min
 Response: 79034623
 Conc: 49.34 ng/ml



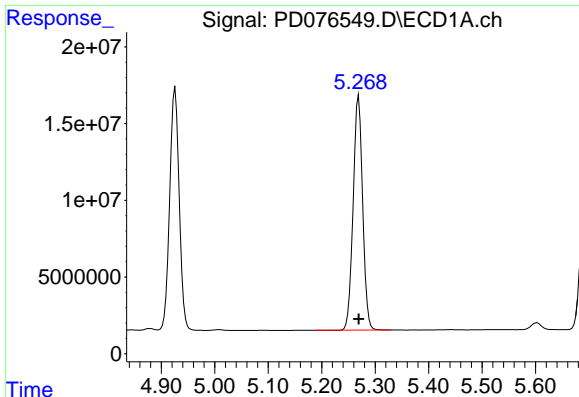
#4 Heptachlor

R.T.: 4.926 min
 Delta R.T.: 0.000 min
 Response: 194337676
 Conc: 53.71 ng/ml



#4 Heptachlor

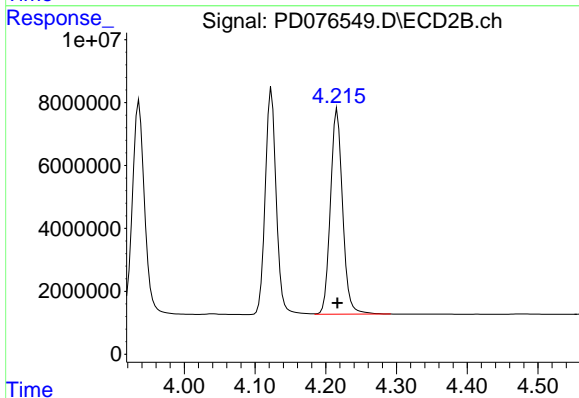
R.T.: 3.936 min
 Delta R.T.: 0.000 min
 Response: 80541499
 Conc: 51.69 ng/ml



#5 Aldrin

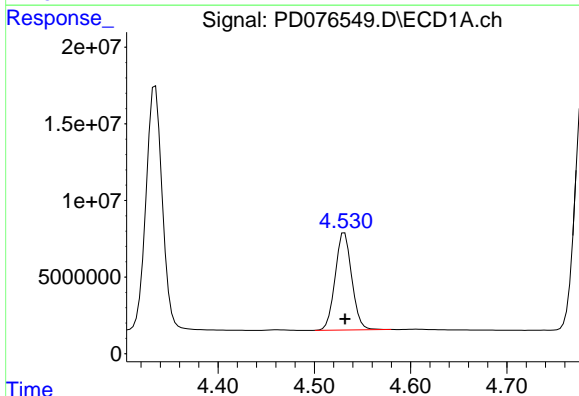
R.T.: 5.269 min
 Delta R.T.: 0.000 min
 Response: 189113087
 Conc: 50.75 ng/ml

Instrument :
 ECD_D
 ClientSampleId :



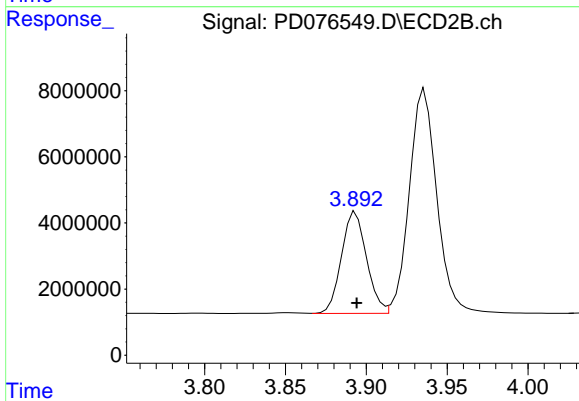
#5 Aldrin

R.T.: 4.216 min
 Delta R.T.: 0.000 min
 Response: 77910327
 Conc: 49.50 ng/ml



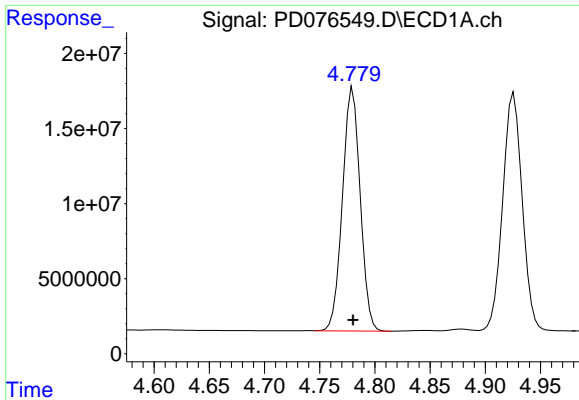
#6 beta-BHC

R.T.: 4.532 min
 Delta R.T.: 0.000 min
 Response: 76131207
 Conc: 50.46 ng/ml



#6 beta-BHC

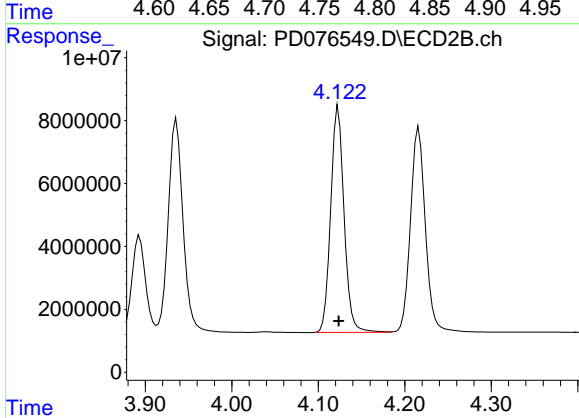
R.T.: 3.894 min
 Delta R.T.: 0.000 min
 Response: 33225130
 Conc: 50.23 ng/ml



#7 delta-BHC

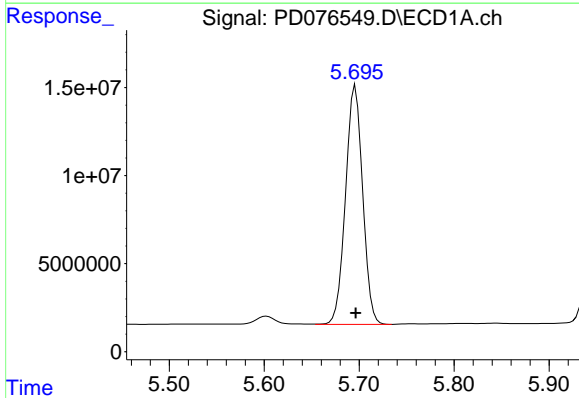
R.T.: 4.780 min
 Delta R.T.: 0.000 min
 Response: 181322131
 Conc: 51.87 ng/ml

Instrument :
 ECD_D
 ClientSampleId :



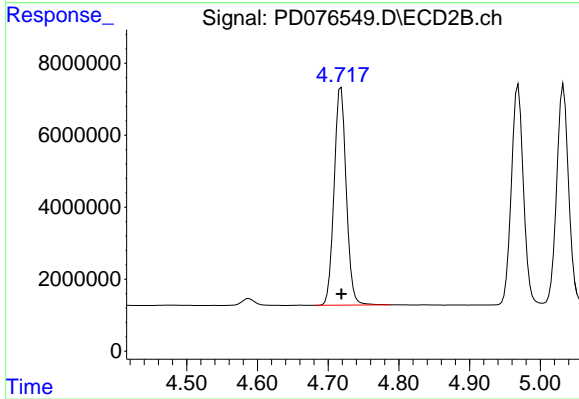
#7 delta-BHC

R.T.: 4.123 min
 Delta R.T.: 0.000 min
 Response: 77114104
 Conc: 49.98 ng/ml



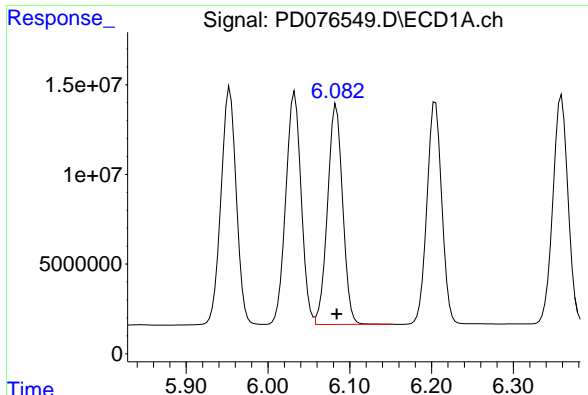
#8 Heptachlor epoxide

R.T.: 5.696 min
 Delta R.T.: 0.000 min
 Response: 170103004
 Conc: 50.88 ng/ml



#8 Heptachlor epoxide

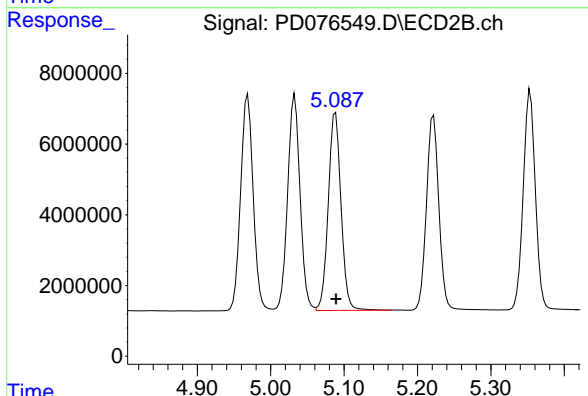
R.T.: 4.718 min
 Delta R.T.: 0.000 min
 Response: 72129766
 Conc: 50.45 ng/ml



#9 Endosulfan I

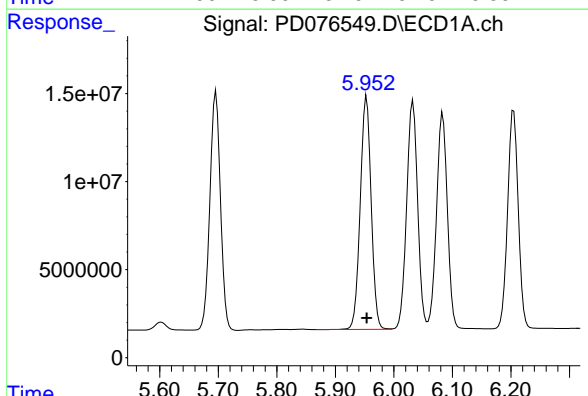
R.T.: 6.084 min
 Delta R.T.: 0.000 min
 Response: 158381814
 Conc: 51.82 ng/ml

Instrument :
 ECD_D
 ClientSampleId :



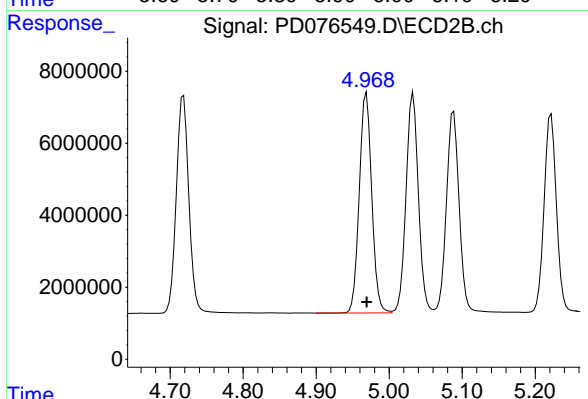
#9 Endosulfan I

R.T.: 5.088 min
 Delta R.T.: 0.000 min
 Response: 67644122
 Conc: 51.32 ng/ml



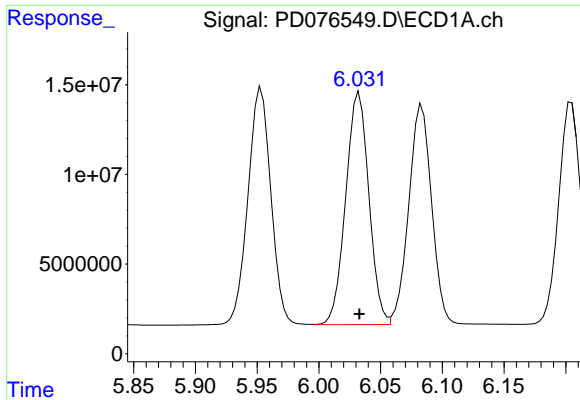
#10 gamma-Chlordane

R.T.: 5.953 min
 Delta R.T.: 0.000 min
 Response: 171735184
 Conc: 52.25 ng/ml



#10 gamma-Chlordane

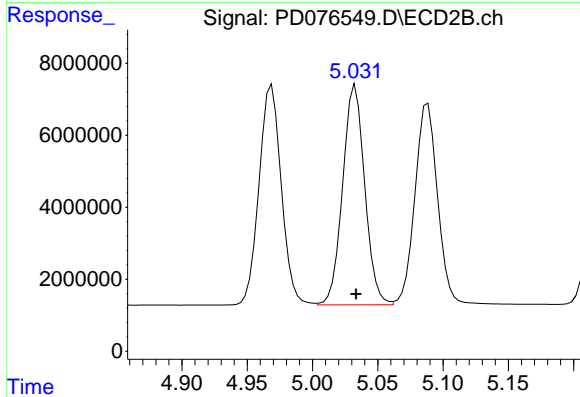
R.T.: 4.969 min
 Delta R.T.: 0.000 min
 Response: 72417691
 Conc: 51.43 ng/ml



#11 alpha-Chlordane

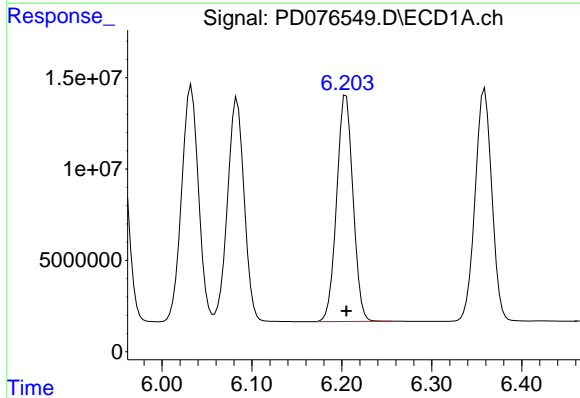
R.T.: 6.033 min
 Delta R.T.: 0.000 min
 Response: 169335309
 Conc: 51.11 ng/ml

Instrument :
 ECD_D
 ClientSampleId :



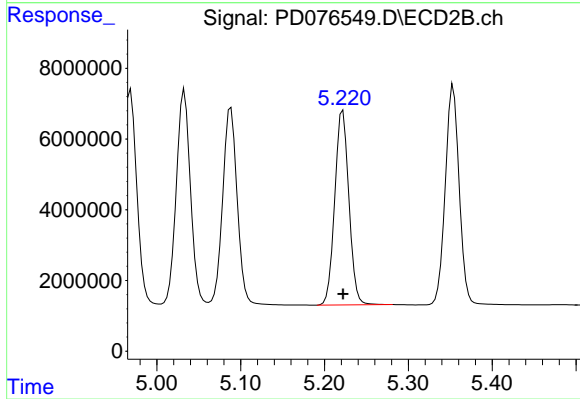
#11 alpha-Chlordane

R.T.: 5.033 min
 Delta R.T.: 0.000 min
 Response: 71743581
 Conc: 50.68 ng/ml



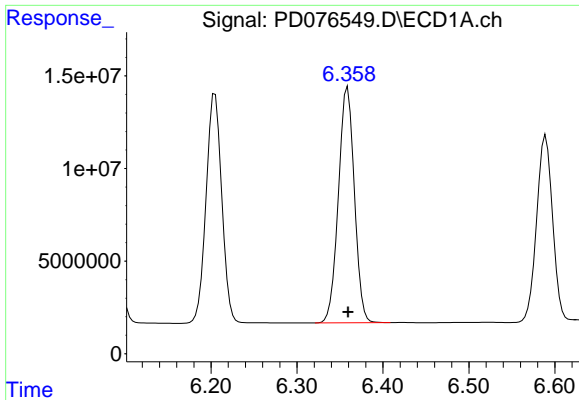
#12 4,4'-DDE

R.T.: 6.205 min
 Delta R.T.: 0.000 min
 Response: 156360415
 Conc: 52.80 ng/ml



#12 4,4'-DDE

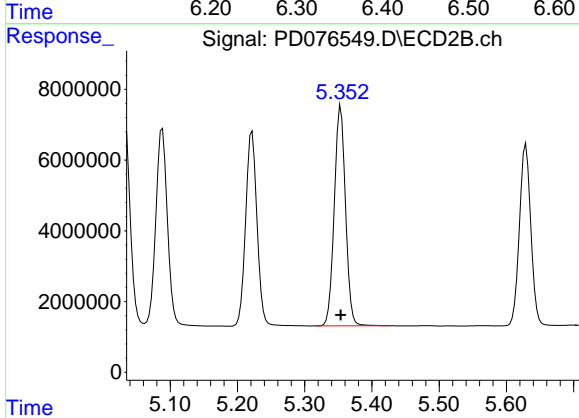
R.T.: 5.222 min
 Delta R.T.: 0.000 min
 Response: 64373900
 Conc: 53.52 ng/ml



#13 Dieldrin

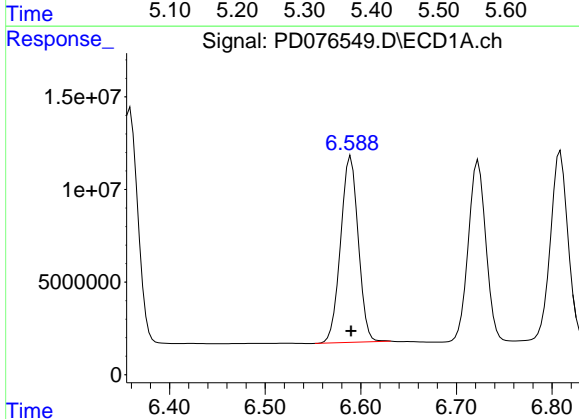
R.T.: 6.359 min
 Delta R.T.: 0.000 min
 Response: 164218498
 Conc: 49.91 ng/ml

Instrument :
 ECD_D
 ClientSampleId :



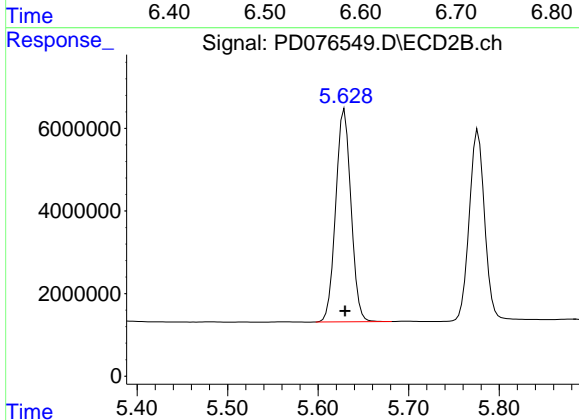
#13 Dieldrin

R.T.: 5.354 min
 Delta R.T.: 0.000 min
 Response: 71437138
 Conc: 50.03 ng/ml



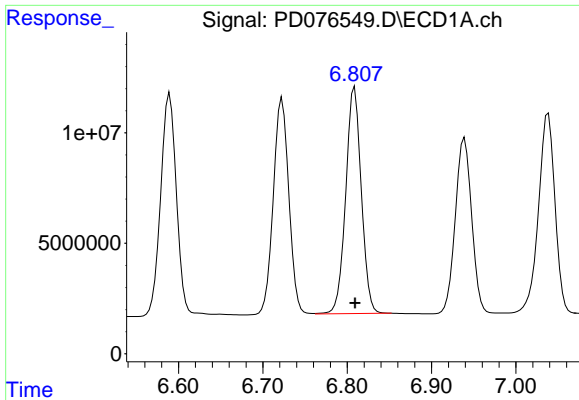
#14 Endrin

R.T.: 6.590 min
 Delta R.T.: 0.000 min
 Response: 129346905
 Conc: 47.73 ng/ml



#14 Endrin

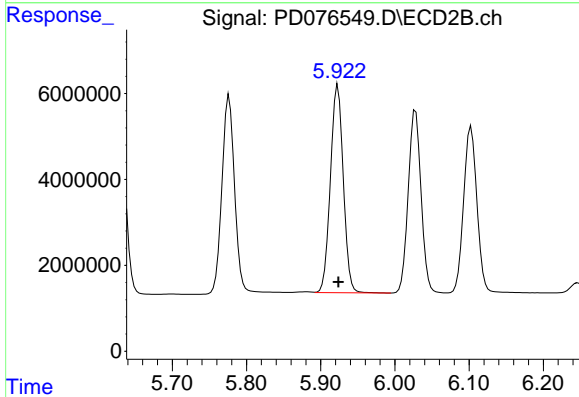
R.T.: 5.629 min
 Delta R.T.: 0.000 min
 Response: 60331369
 Conc: 48.47 ng/ml



#15 Endosulfan II

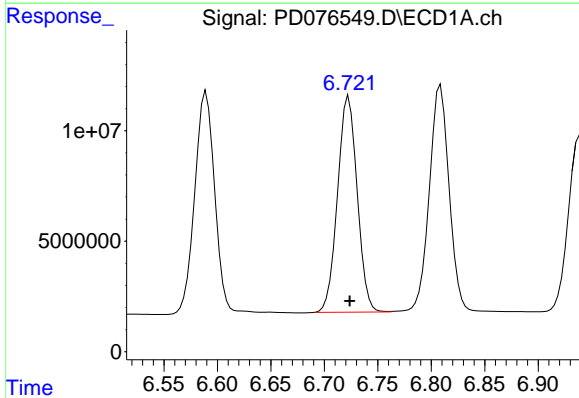
R.T.: 6.809 min
 Delta R.T.: 0.000 min
 Response: 131606606
 Conc: 46.31 ng/ml

Instrument :
 ECD_D
 ClientSampleId :



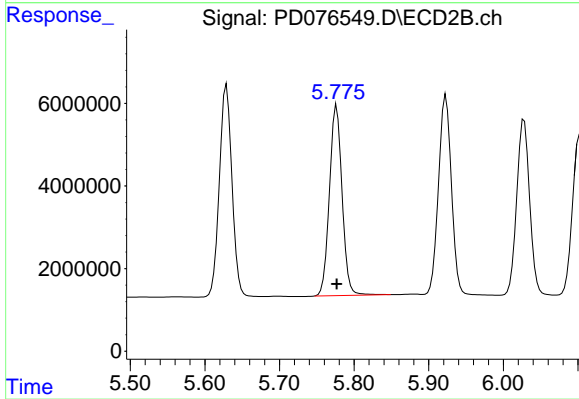
#15 Endosulfan II

R.T.: 5.923 min
 Delta R.T.: 0.000 min
 Response: 58401677
 Conc: 48.03 ng/ml



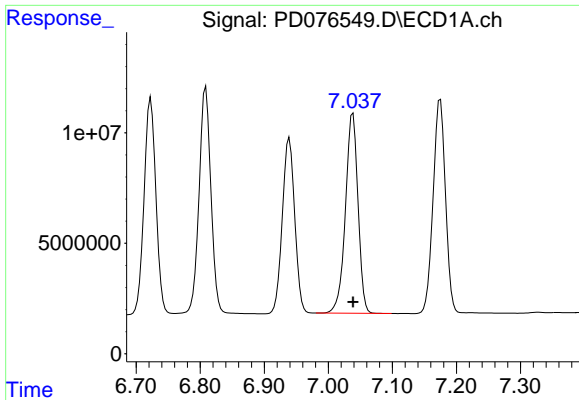
#16 4,4'-DDD

R.T.: 6.723 min
 Delta R.T.: 0.000 min
 Response: 125198652
 Conc: 52.65 ng/ml



#16 4,4'-DDD

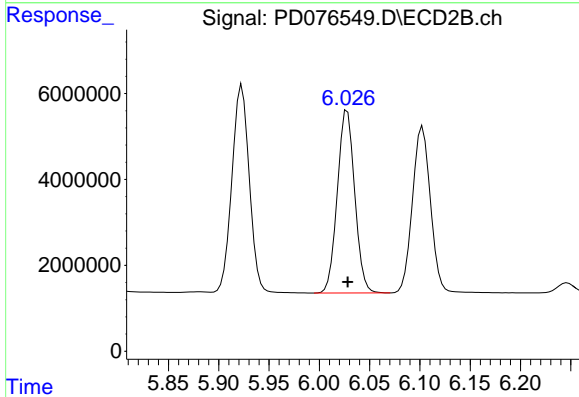
R.T.: 5.777 min
 Delta R.T.: 0.000 min
 Response: 54536963
 Conc: 55.94 ng/ml



#17 4,4'-DDT

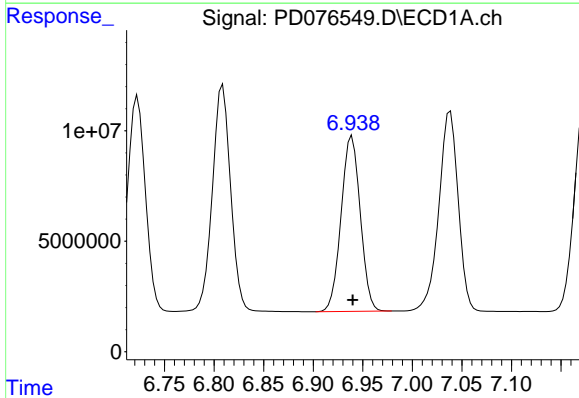
R.T.: 7.038 min
 Delta R.T.: 0.000 min
 Response: 123132028
 Conc: 52.55 ng/ml

Instrument :
 ECD_D
 ClientSampleId :



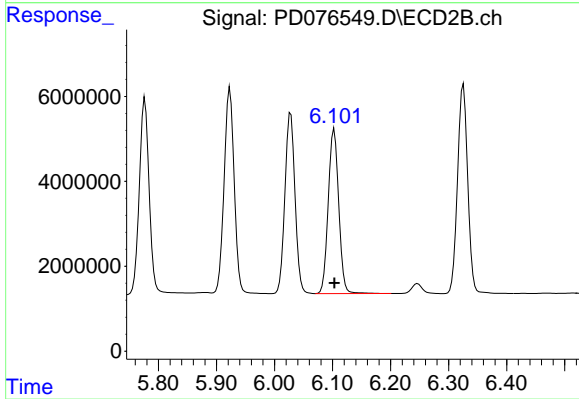
#17 4,4'-DDT

R.T.: 6.028 min
 Delta R.T.: 0.000 min
 Response: 51204201
 Conc: 54.62 ng/ml



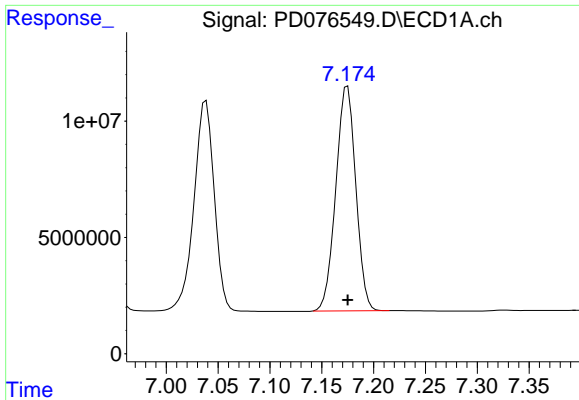
#18 Endrin aldehyde

R.T.: 6.939 min
 Delta R.T.: 0.000 min
 Response: 106833897
 Conc: 49.06 ng/ml



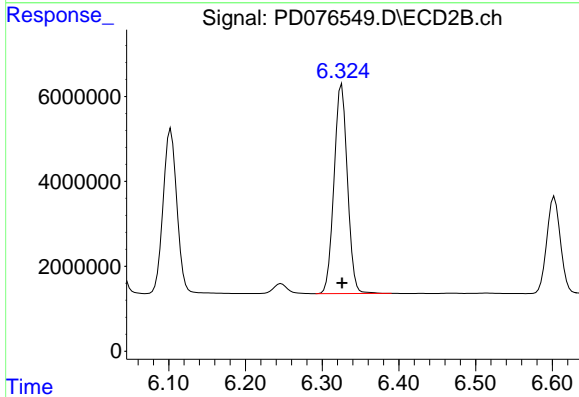
#18 Endrin aldehyde

R.T.: 6.103 min
 Delta R.T.: 0.000 min
 Response: 48417171
 Conc: 50.06 ng/ml

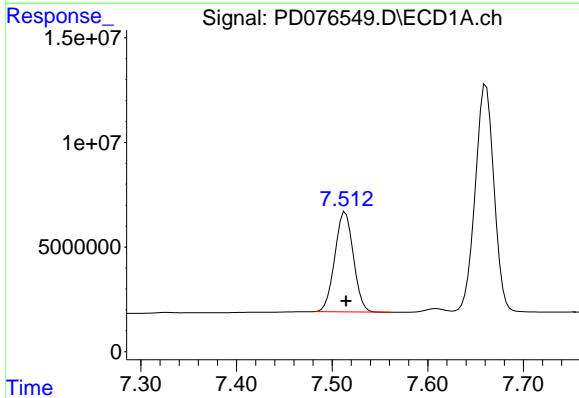


#19 Endosulfan Sulfate
 R.T.: 7.175 min
 Delta R.T.: 0.000 min
 Response: 129532776
 Conc: 49.66 ng/ml

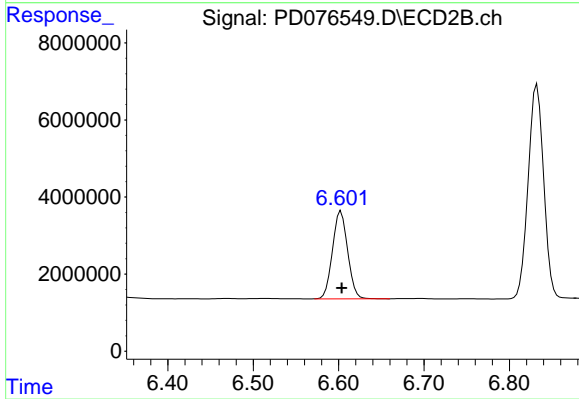
Instrument :
 ECD_D
 ClientSampleId :



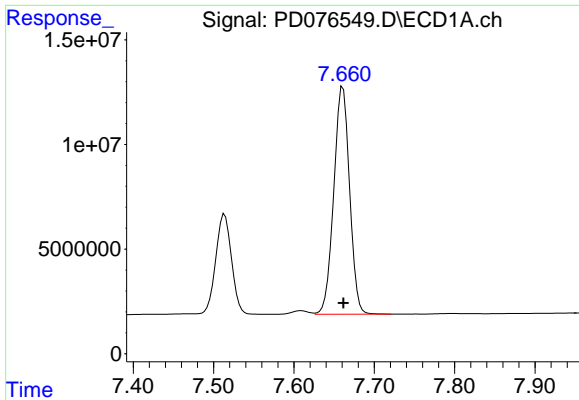
#19 Endosulfan Sulfate
 R.T.: 6.325 min
 Delta R.T.: 0.000 min
 Response: 59787964
 Conc: 51.72 ng/ml



#20 Methoxychlor
 R.T.: 7.514 min
 Delta R.T.: 0.000 min
 Response: 64408057
 Conc: 46.58 ng/ml



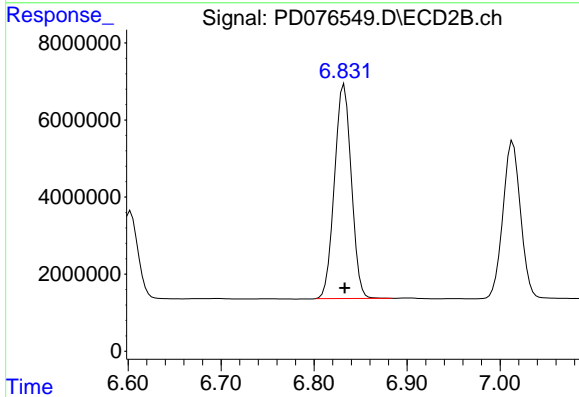
#20 Methoxychlor
 R.T.: 6.603 min
 Delta R.T.: -0.001 min
 Response: 28173336
 Conc: 52.10 ng/ml



#21 Endrin ketone

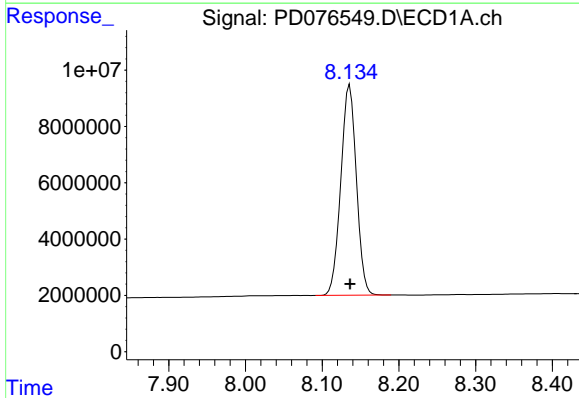
R.T.: 7.661 min
 Delta R.T.: 0.000 min
 Response: 148840145
 Conc: 49.80 ng/ml

Instrument :
 ECD_D
 ClientSampleId :



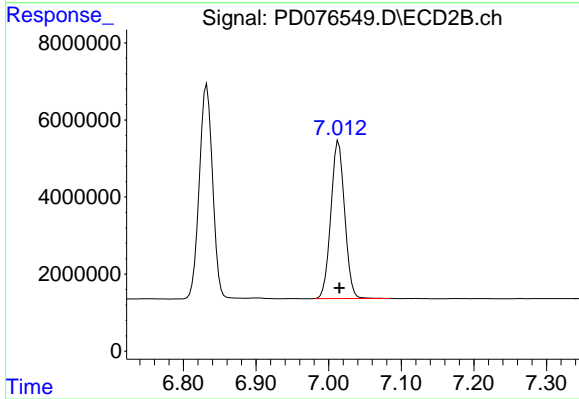
#21 Endrin ketone

R.T.: 6.832 min
 Delta R.T.: 0.000 min
 Response: 70009012
 Conc: 51.13 ng/ml



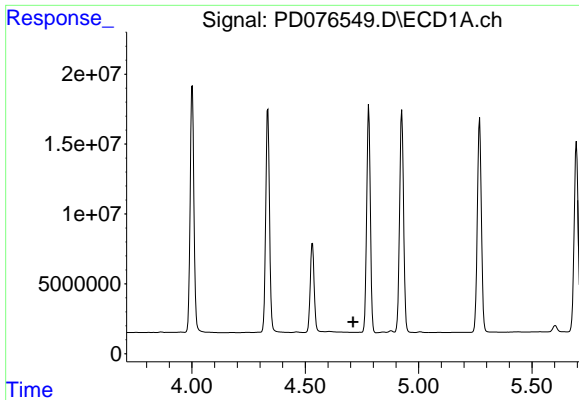
#22 Mirex

R.T.: 8.136 min
 Delta R.T.: 0.000 min
 Response: 105881661
 Conc: 48.02 ng/ml



#22 Mirex

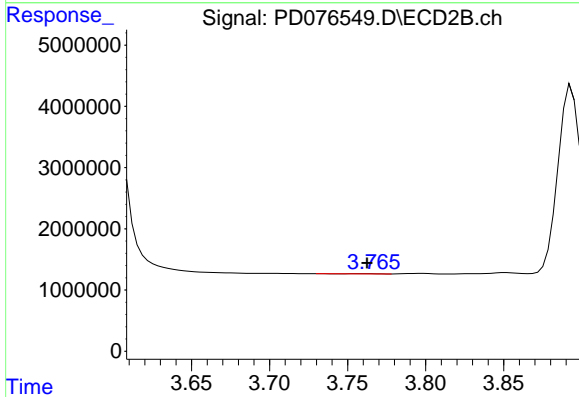
R.T.: 7.014 min
 Delta R.T.: -0.001 min
 Response: 53992359
 Conc: 49.46 ng/ml



#23 Chlordane-1

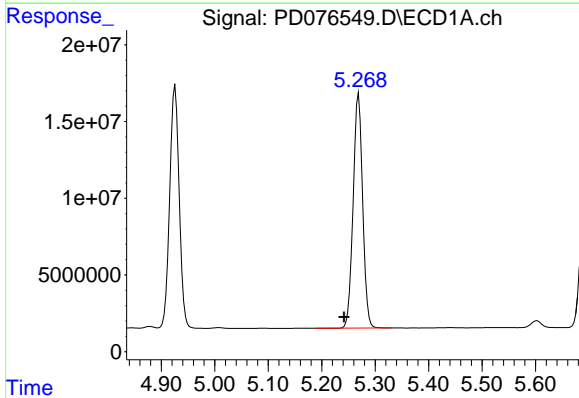
R.T.: 0.000 min
 Exp R.T.: 4.711 min
 Response: 0
 Conc: N.D.

Instrument :
 ECD_D
 ClientSampleId :



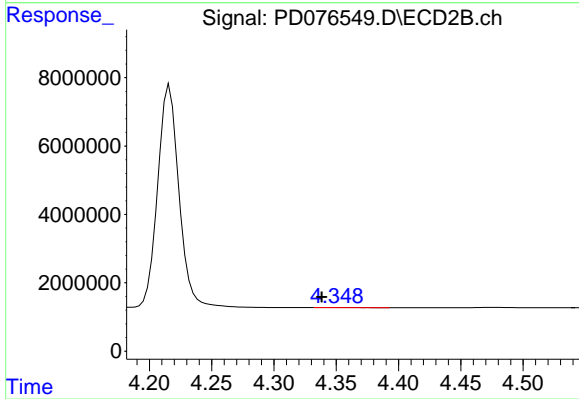
#23 Chlordane-1

R.T.: 3.759 min
 Delta R.T.: -0.003 min
 Response: 22518
 Conc: 0.06 ng/ml



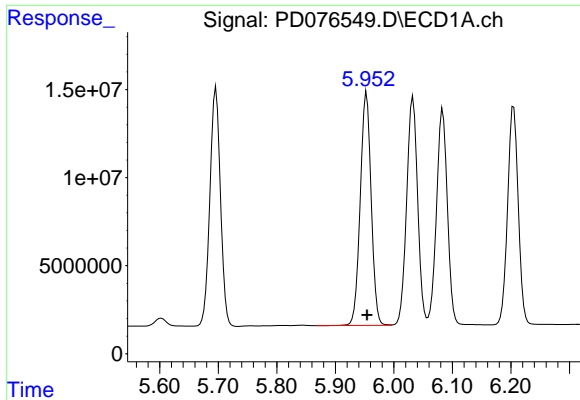
#24 Chlordane-2

R.T.: 5.269 min
 Delta R.T.: 0.027 min
 Response: 189113087
 Conc: 182.83 ng/ml



#24 Chlordane-2

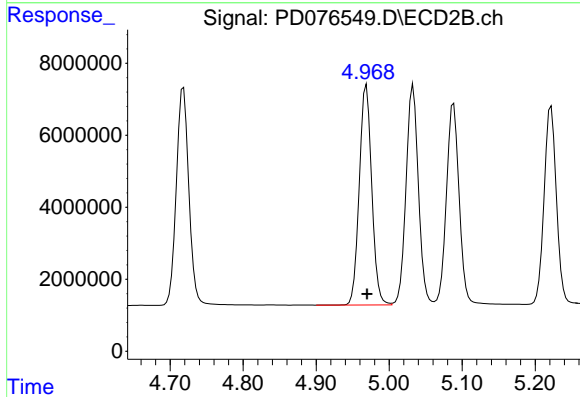
R.T.: 4.349 min
 Delta R.T.: 0.011 min
 Response: 75792
 Conc: 0.19 ng/ml



#25 Chlordane-3

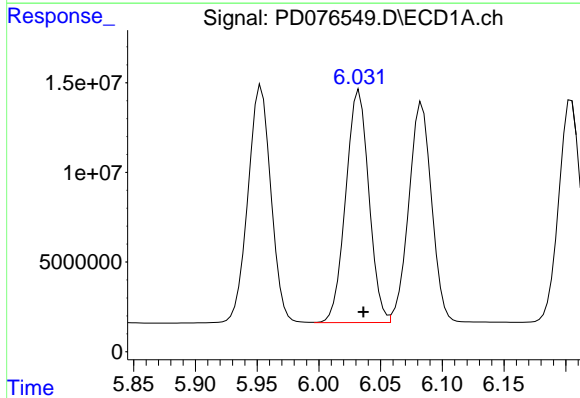
R.T.: 5.953 min
 Delta R.T.: 0.000 min
 Response: 171735184
 Conc: 36.03 ng/ml

Instrument :
 ECD_D
 ClientSampleId :



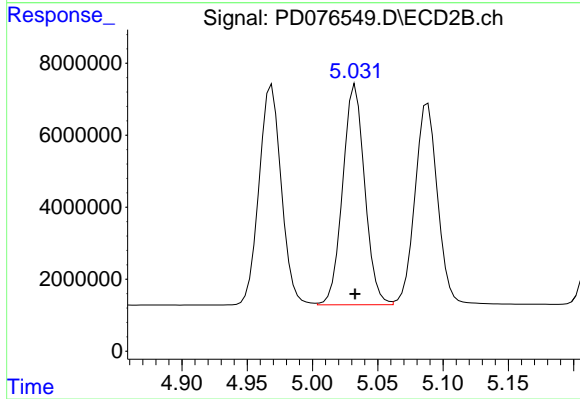
#25 Chlordane-3

R.T.: 4.969 min
 Delta R.T.: 0.000 min
 Response: 72417691
 Conc: 53.78 ng/ml



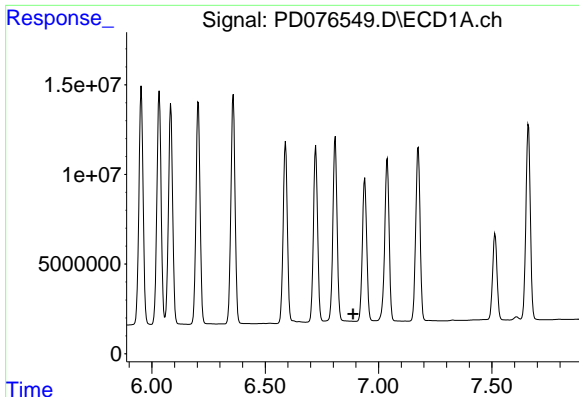
#26 Chlordane-4

R.T.: 6.033 min
 Delta R.T.: -0.003 min
 Response: 169335309
 Conc: 30.14 ng/ml



#26 Chlordane-4

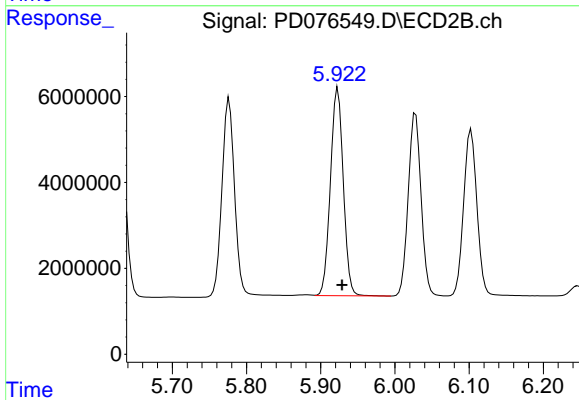
R.T.: 5.033 min
 Delta R.T.: 0.000 min
 Response: 71743581
 Conc: 54.95 ng/ml



#27 Chlordane-5

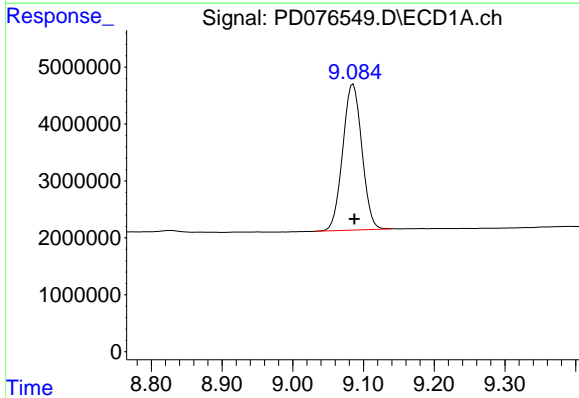
R.T.: 0.000 min
 Exp R.T.: 6.888 min
 Response: 0
 Conc: N.D.

Instrument :
 ECD_D
 ClientSampleId :



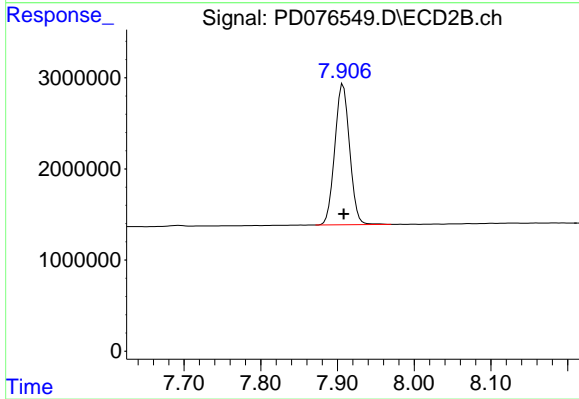
#27 Chlordane-5

R.T.: 5.923 min
 Delta R.T.: -0.006 min
 Response: 58401677
 Conc: 122.54 ng/ml



#28 Decachlorobiphenyl

R.T.: 9.085 min
 Delta R.T.: -0.002 min
 Response: 48365687
 Conc: 19.14 ng/ml



#28 Decachlorobiphenyl

R.T.: 7.907 min
 Delta R.T.: 0.000 min
 Response: 20729965
 Conc: 20.03 ng/ml