

Data Path : Z:\pestpcbsrv\HPCHEM1\ECD\_D\Data\PD071124\  
 Data File : PD083924.D  
 Signal(s) : Signal #1: ECD1A.ch Signal #2: ECD2B.ch  
 Acq On : 11 Jul 2024 12:11  
 Operator : AR\AJ  
 Sample : PIBLK018  
 Misc :  
 ALS Vial : 2 Sample Multiplier: 1

Instrument :  
 ECD\_D  
 ClientSampleId :  
 PIBLK178

Integration File signal 1: autoint1.e  
 Integration File signal 2: autoint2.e  
 Quant Time: Jul 12 04:39:42 2024  
 Quant Method : Z:\pestpcbsrv\HPCHEM1\ECD\_D\Method\PD062624CLP.M  
 Quant Title : GC Extractables  
 QLast Update : Thu Jun 27 04:33:52 2024  
 Response via : Initial Calibration  
 Integrator: ChemStation

Volume Inj. : 1 µl  
 Signal #1 Phase : ZB-MR1 Signal #2 Phase: ZB-MR2  
 Signal #1 Info : 30M x 0.32mm x0.5 Signal #2 Info : 30M x 0.32mm x 0.25µm

Compound	RT#1	RT#2	Resp#1	Resp#2	ng/ml	ng/ml
-----						
System Monitoring Compounds						
1) SA Tetrachlo...	3.571	2.769	21926129	129.3E6	21.596	23.854
27) SA Decachlor...	9.132	7.897	48005329	158.1E6	22.530	23.663

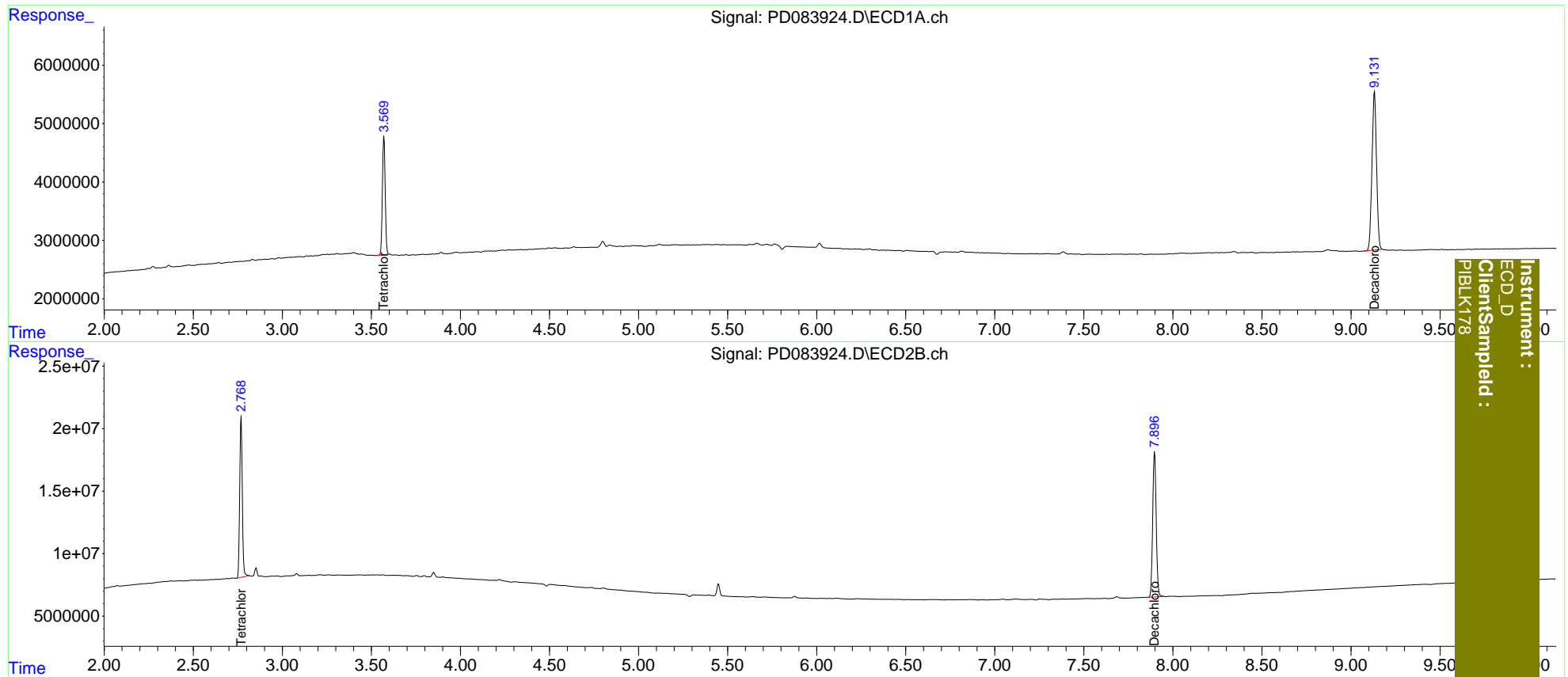
Target Compounds

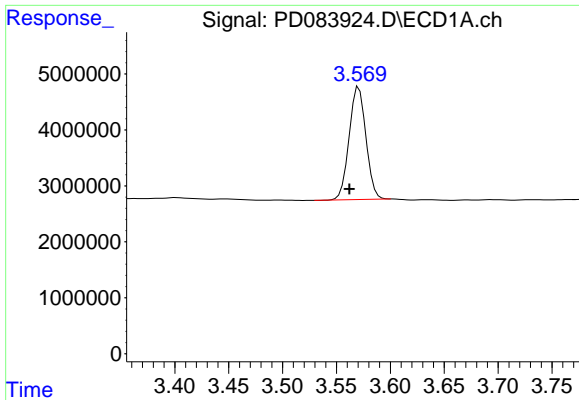
(f)=RT Delta > 1/2 Window (#)=Amounts differ by > 25% (m)=manual int.

Data Path : Z:\pestpcbsrv\HPCHEM1\ECD\_D\Data\PD071124\  
Data File : PD083924.D  
Signal(s) : Signal #1: ECD1A.ch Signal #2: ECD2B.ch  
Acq On : 11 Jul 2024 12:11  
Operator : AR\AJ  
Sample : PIBLK018  
Misc :  
ALS Vial : 2 Sample Multiplier: 1

Integration File signal 1: autoint1.e  
Integration File signal 2: autoint2.e  
Quant Time: Jul 12 04:39:42 2024  
Quant Method : Z:\pestpcbsrv\HPCHEM1\ECD\_D\Method\PD062624CLP.M  
Quant Title : GC Extractables  
QLast Update : Thu Jun 27 04:33:52 2024  
Response via : Initial Calibration  
Integrator: ChemStation

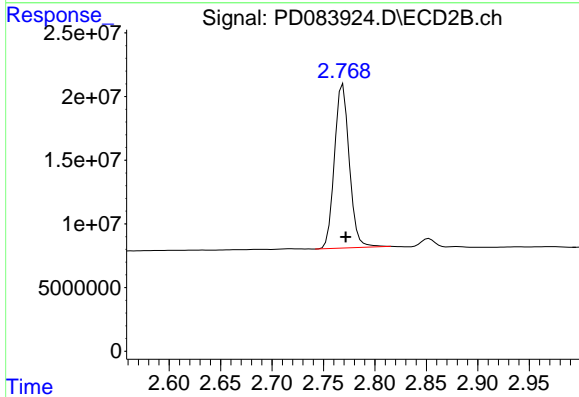
Volume Inj. : 1 µl  
Signal #1 Phase : ZB-MR1 Signal #2 Phase: ZB-MR2  
Signal #1 Info : 30M x 0.32mm x0.5 Signal #2 Info : 30M x 0.32mm x 0.25µm



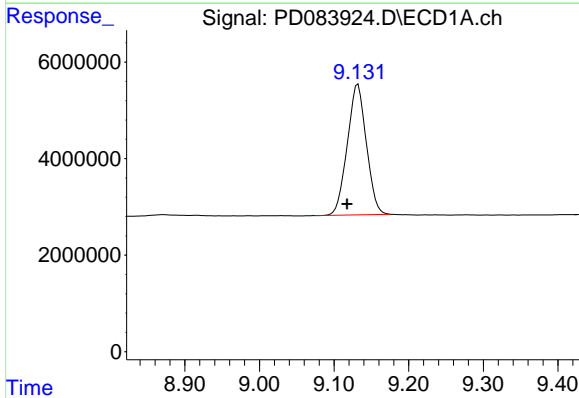


#1 Tetrachloro-m-xylene  
 R.T.: 3.571 min  
 Delta R.T.: 0.009 min  
 Response: 21926129  
 Conc: 21.60 ng/ml

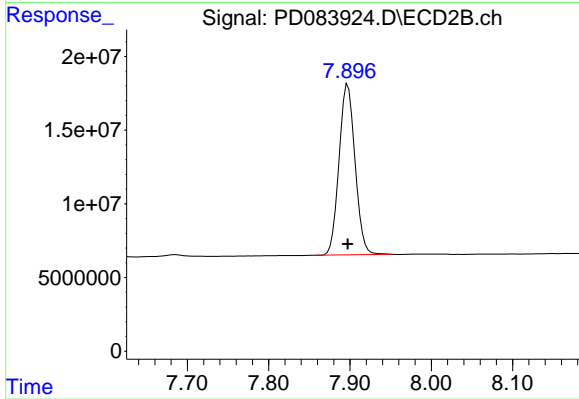
Instrument :  
 ECD\_D  
 ClientSampleId :  
 PIBLK178



#1 Tetrachloro-m-xylene  
 R.T.: 2.769 min  
 Delta R.T.: -0.003 min  
 Response: 129278882  
 Conc: 23.85 ng/ml



#27 Decachlorobiphenyl  
 R.T.: 9.132 min  
 Delta R.T.: 0.015 min  
 Response: 48005329  
 Conc: 22.53 ng/ml



#27 Decachlorobiphenyl  
 R.T.: 7.897 min  
 Delta R.T.: 0.000 min  
 Response: 158088872  
 Conc: 23.66 ng/ml