

Data Path : Z:\pestpcbsrv\HPCHEM1\ECD_D\Data\PD071125\
 Data File : PD089450.D
 Signal(s) : Signal #1: ECD1A.ch Signal #2: ECD2B.ch
 Acq On : 11 Jul 2025 10:06
 Operator : AR\AJ
 Sample : I.BLK
 Misc :
 ALS Vial : 2 Sample Multiplier: 1

Instrument :
 ECD_D
 ClientSampleId :
 I.BLK

Integration File signal 1: autoint1.e
 Integration File signal 2: autoint2.e
 Quant Time: Jul 11 22:48:43 2025
 Quant Method : Z:\pestpcbsrv\HPCHEM1\ECD_D\Method\PD061825.M
 Quant Title : GC Extractables
 QLast Update : Wed Jun 18 05:39:05 2025
 Response via : Initial Calibration
 Integrator: ChemStation

Volume Inj. : 1 µl
 Signal #1 Phase : ZB-MR2 Signal #2 Phase: ZB-MR2
 Signal #1 Info : 30M x 0.32mm x0.5 Signal #2 Info : 30M x 0.32mm x 0.25µm

Compound	RT#1	RT#2	Resp#1	Resp#2	ng/ml	ng/ml
System Monitoring Compounds						
1) SA Tetrachlo...	3.550	2.879	55719393	395.4E6	19.529	23.320
28) SA Decachlor...	9.072	8.070	79282461	397.7E6	20.186	20.119
Target Compounds						
2) A alpha-BHC	0.000	3.381	0	4258958	N.D.	0.159 #
3) MA gamma-BHC...	0.000	3.723	0	228120	N.D.	0.009 #
4) MA Heptachlor	0.000	4.065f	0	453663	N.D.	0.018 #
5) MB Aldrin	0.000	4.368	0	153526	N.D.	0.006 #
6) B beta-BHC	0.000	4.034	0	739821	N.D.	0.069 #
7) B delta-BHC	4.778	4.254	2241306	824157	0.437	0.033 #
8) B Heptachlo...	5.684	0.000	2684293	0	0.556	N.D. #
9) A Endosulfan I	6.107f	5.226f	1601286	5818603	0.355	0.279
10) B gamma-Chl...	0.000	5.120	0	10272327	N.D.	0.429 #
11) B alpha-Chl...	0.000	5.197	0	9204538	N.D.	0.402 #
12) B 4,4'-DDE	0.000	5.372	0	1399236	N.D.	0.061 #
13) MA Dieldrin	0.000	5.506	0	644520	N.D.	0.028 #
14) MA Endrin	0.000	5.792	0	44468204	N.D.	2.048 #
15) B Endosulfa...	6.770f	6.095	1137425	1003142	0.282	0.050 #
16) A 4,4'-DDD	6.700	5.933	464216	664058	0.135	0.035 #
17) MA 4,4'-DDT	7.024	0.000	62067	0	0.016	N.D. #
18) B Endrin al...	6.916	0.000	471074	0	0.154	N.D. #
20) A Methoxychlor	0.000	6.746	0	630459	N.D.	0.059 #
22) Mirex	8.116	7.174	277885	5425498	0.091	0.325 #
23) Chlordane-1	0.000	3.891	0	571765	N.D.	0.613 #
24) Chlordane-2	0.000	4.484	0	14337532	N.D.	15.067 #
25) Chlordane-3	0.000	5.120	0	10272327	N.D.	3.458 #
26) Chlordane-4	0.000	5.197	0	9204538	N.D.	3.672 #
27) Chlordane-5	0.000	6.095	0	1003142	N.D.	0.886 #

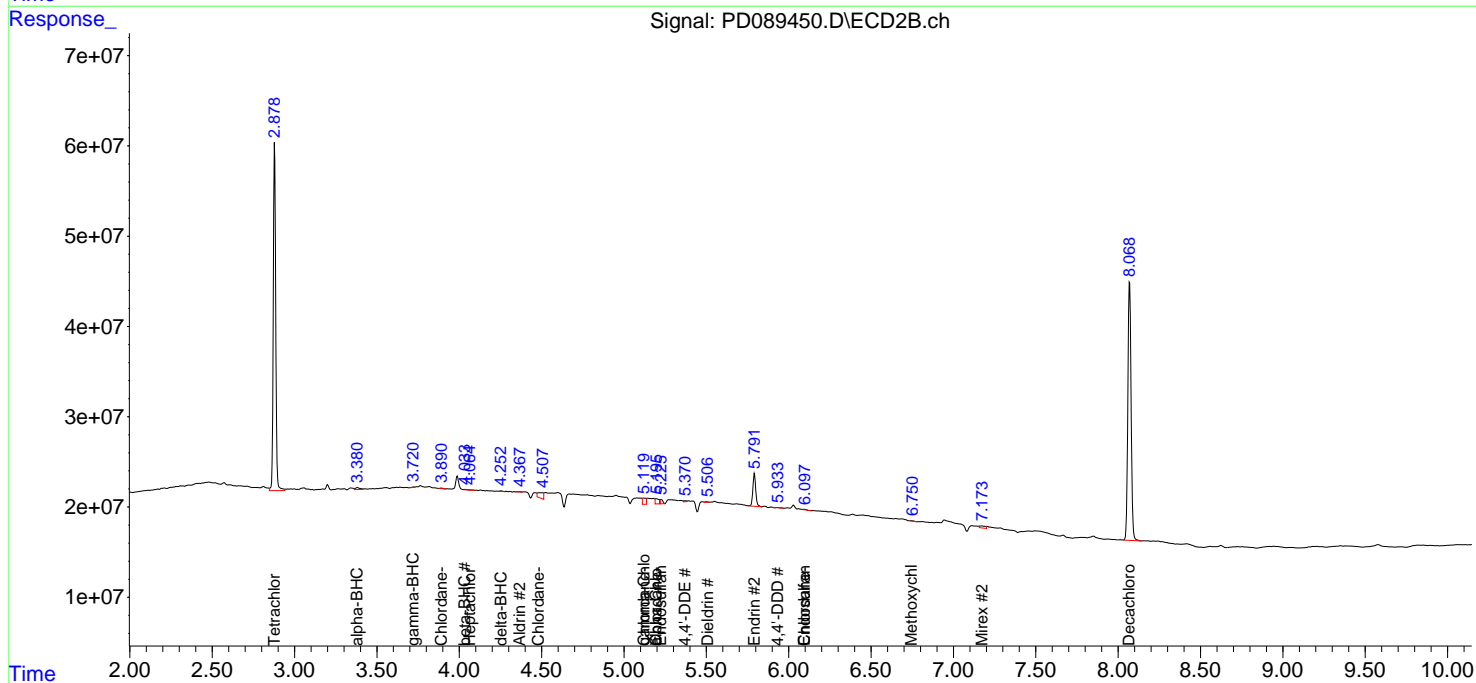
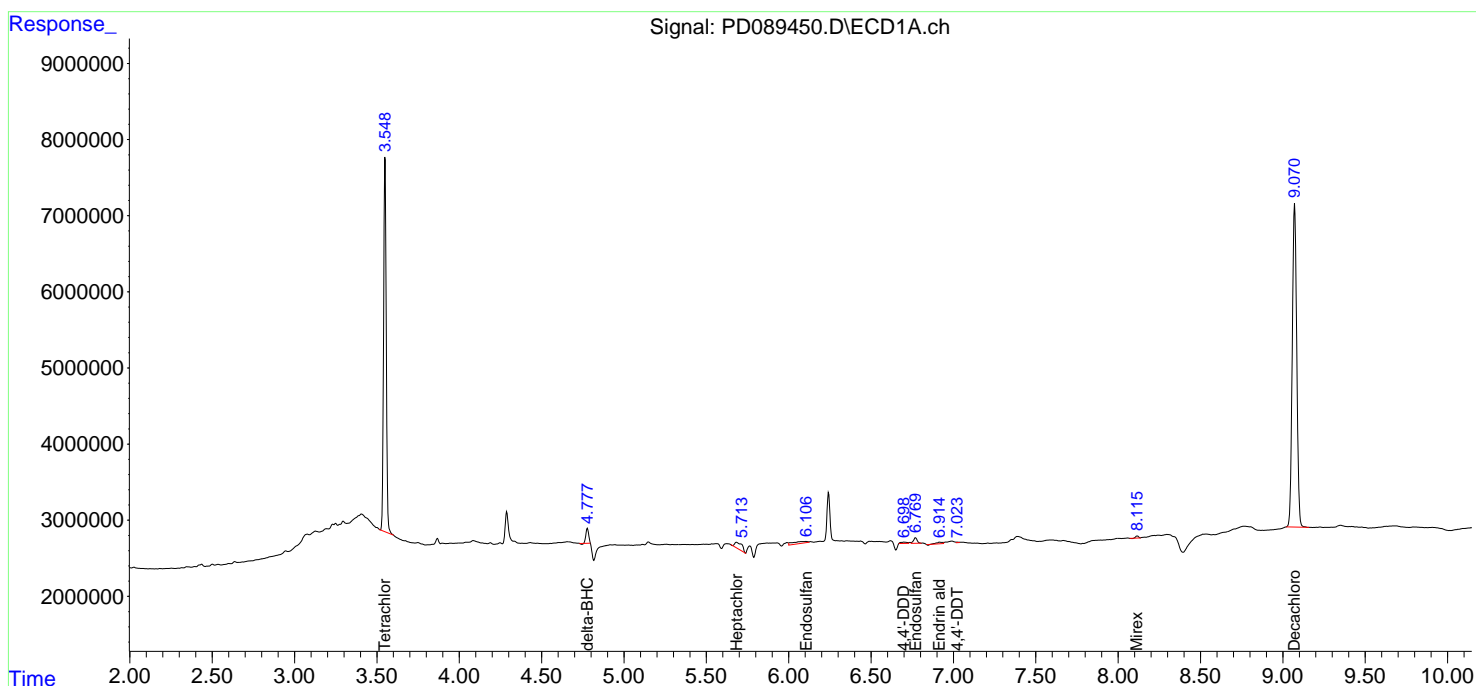
(f)=RT Delta > 1/2 Window (#)=Amounts differ by > 25% (m)=manual int.

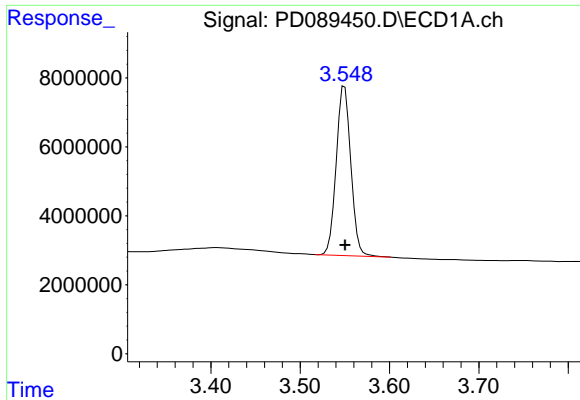
Data Path : Z:\pestpcbsrv\HPCHEM1\ECD_D\Data\PD071125\
 Data File : PD089450.D
 Signal(s) : Signal #1: ECD1A.ch Signal #2: ECD2B.ch
 Acq On : 11 Jul 2025 10:06
 Operator : AR\AJ
 Sample : I.BLK
 Misc :
 ALS Vial : 2 Sample Multiplier: 1

Instrument :
 ECD_D
 ClientSampleId :
 I.BLK

Integration File signal 1: autoint1.e
 Integration File signal 2: autoint2.e
 Quant Time: Jul 11 22:48:43 2025
 Quant Method : Z:\pestpcbsrv\HPCHEM1\ECD_D\Method\PD061825.M
 Quant Title : GC Extractables
 QLast Update : Wed Jun 18 05:39:05 2025
 Response via : Initial Calibration
 Integrator: ChemStation

Volume Inj. : 1 µl
 Signal #1 Phase : ZB-MR1 Signal #2 Phase: ZB-MR2
 Signal #1 Info : 30M x 0.32mm x0.5 Signal #2 Info : 30M x 0.32mm x 0.25µm

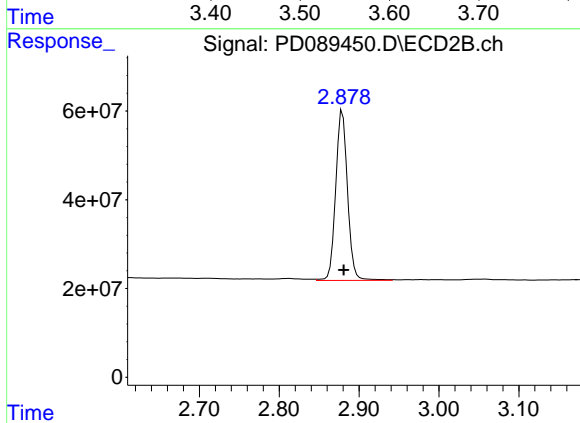




#1 Tetrachloro-m-xylene

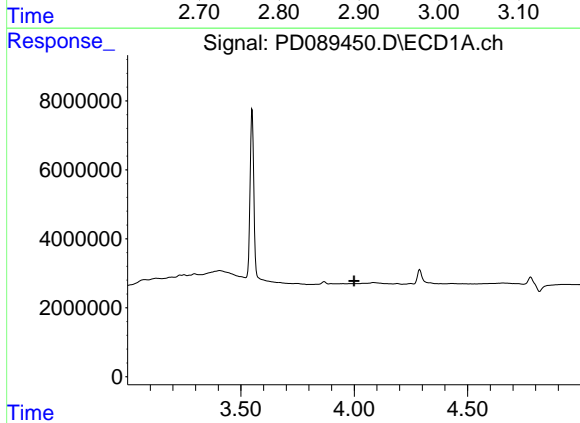
R.T.: 3.550 min
 Delta R.T.: 0.000 min
 Response: 55719393
 Conc: 19.53 ng/ml

Instrument :
 ECD_D
 ClientSampleId :
 I.BLK



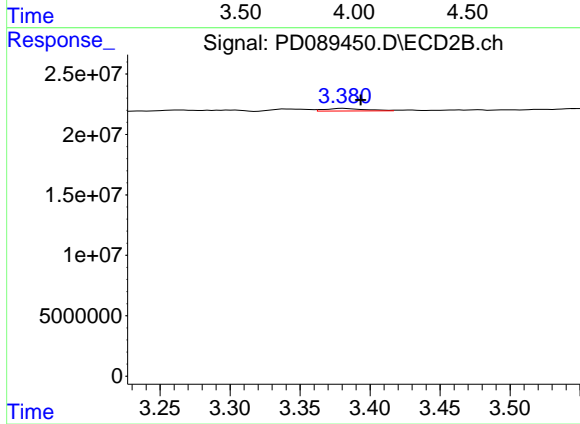
#1 Tetrachloro-m-xylene

R.T.: 2.879 min
 Delta R.T.: -0.002 min
 Response: 395352949
 Conc: 23.32 ng/ml



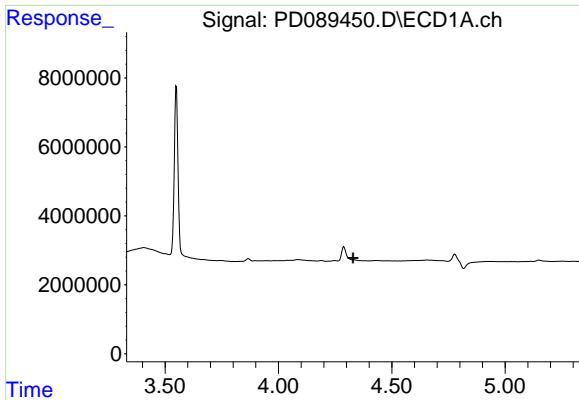
#2 alpha-BHC

R.T.: 0.000 min
 Exp R.T. : 3.999 min
 Response: 0
 Conc: N.D.



#2 alpha-BHC

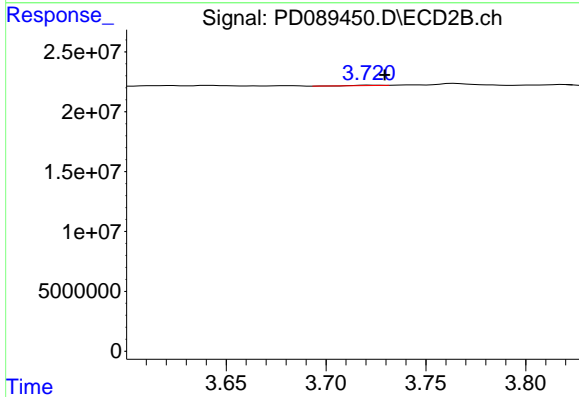
R.T.: 3.381 min
 Delta R.T.: -0.012 min
 Response: 4258958
 Conc: 0.16 ng/ml



#3 gamma-BHC (Lindane)

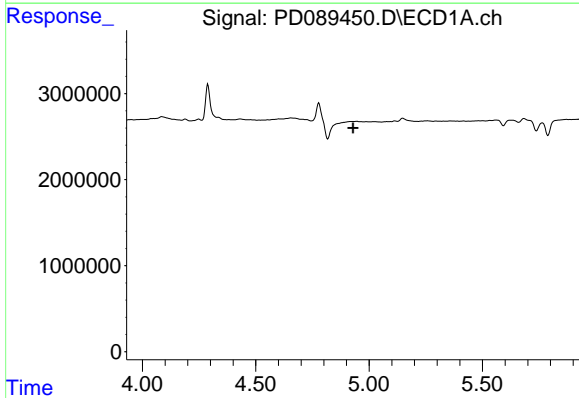
R.T.: 0.000 min
 Exp R.T.: 4.330 min
 Response: 0
 Conc: N.D.

Instrument :
 ECD_D
 ClientSampleId :
 I.BLK



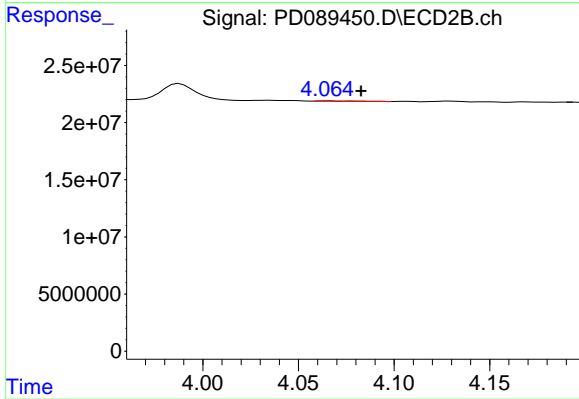
#3 gamma-BHC (Lindane)

R.T.: 3.723 min
 Delta R.T.: -0.007 min
 Response: 228120
 Conc: 0.01 ng/ml



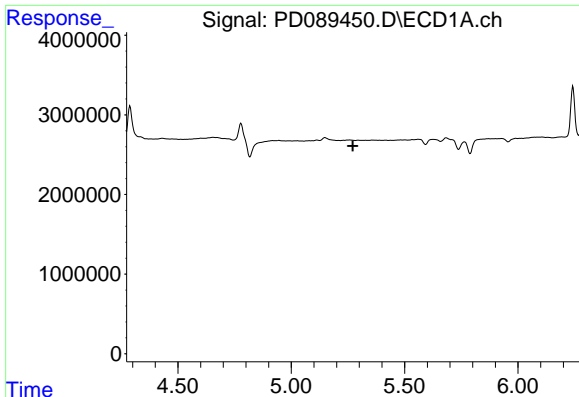
#4 Heptachlor

R.T.: 0.000 min
 Exp R.T.: 4.929 min
 Response: 0
 Conc: N.D.



#4 Heptachlor

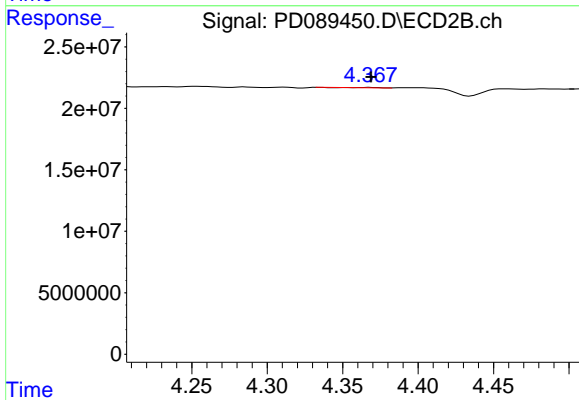
R.T.: 4.065 min
 Delta R.T.: -0.018 min
 Response: 453663
 Conc: 0.02 ng/ml



#5 Aldrin

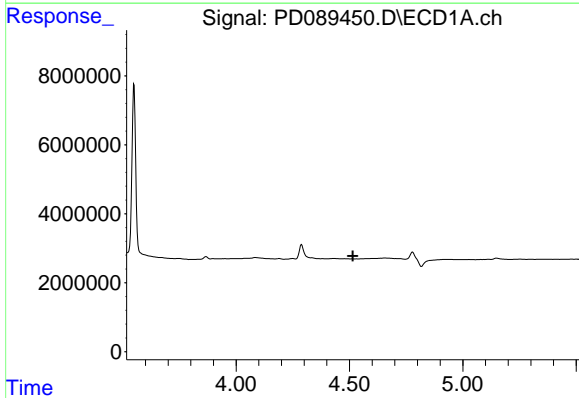
R.T.: 0.000 min
 Exp R.T.: 5.271 min
 Response: 0
 Conc: N.D.

Instrument :
 ECD_D
 ClientSampleId :
 I.BLK



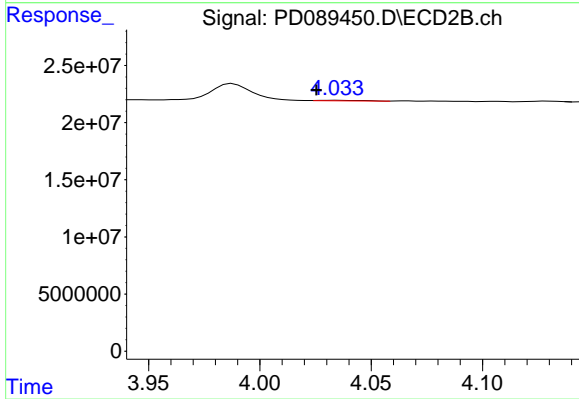
#5 Aldrin

R.T.: 4.368 min
 Delta R.T.: 0.000 min
 Response: 153526
 Conc: 0.01 ng/ml



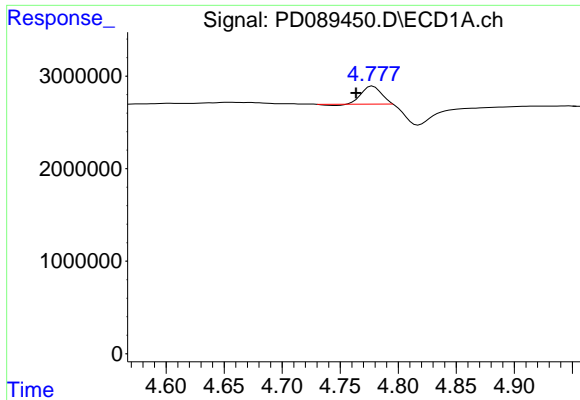
#6 beta-BHC

R.T.: 0.000 min
 Exp R.T.: 4.515 min
 Response: 0
 Conc: N.D.



#6 beta-BHC

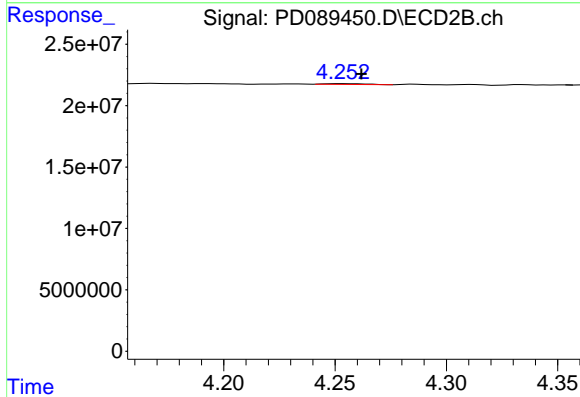
R.T.: 4.034 min
 Delta R.T.: 0.009 min
 Response: 739821
 Conc: 0.07 ng/ml



#7 delta-BHC

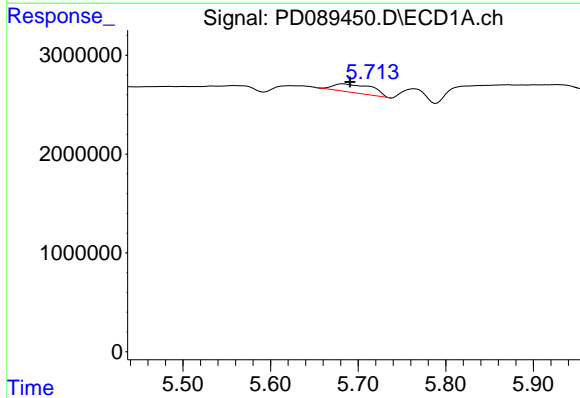
R.T.: 4.778 min
 Delta R.T.: 0.014 min
 Response: 2241306
 Conc: 0.44 ng/ml

Instrument :
 ECD_D
 ClientSampleId :
 I.BLK



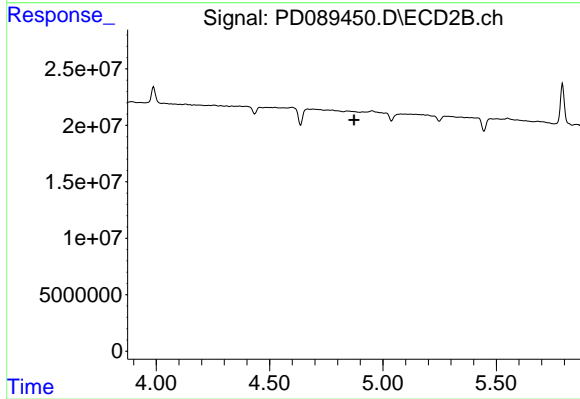
#7 delta-BHC

R.T.: 4.254 min
 Delta R.T.: -0.008 min
 Response: 824157
 Conc: 0.03 ng/ml



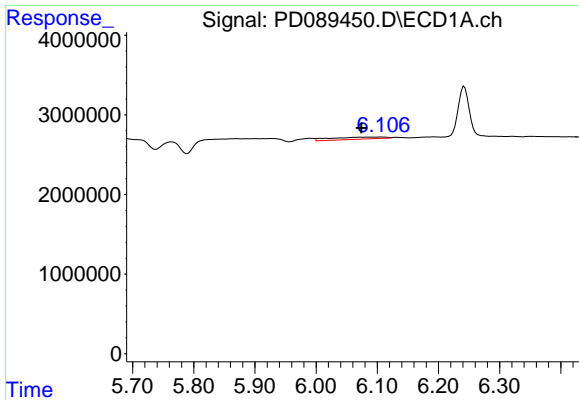
#8 Heptachlor epoxide

R.T.: 5.684 min
 Delta R.T.: -0.007 min
 Response: 2684293
 Conc: 0.56 ng/ml



#8 Heptachlor epoxide

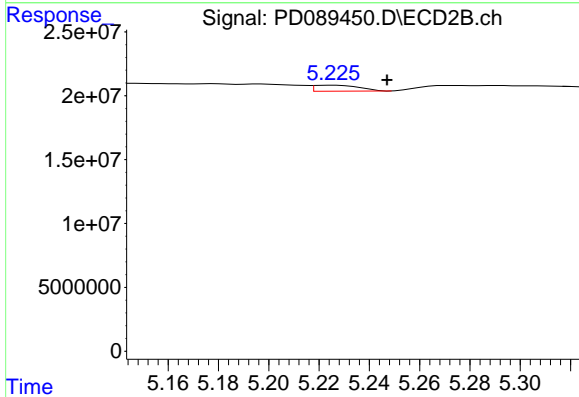
R.T.: 0.000 min
 Exp R.T. : 4.873 min
 Response: 0
 Conc: N.D.



#9 Endosulfan I

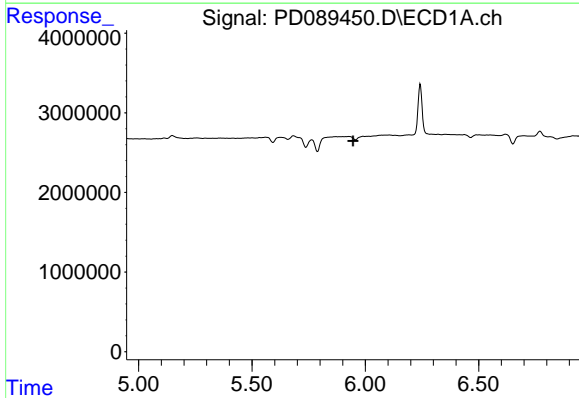
R.T.: 6.107 min
 Delta R.T.: 0.033 min
 Response: 1601286
 Conc: 0.36 ng/ml

Instrument :
 ECD_D
 ClientSampleId :
 I.BLK



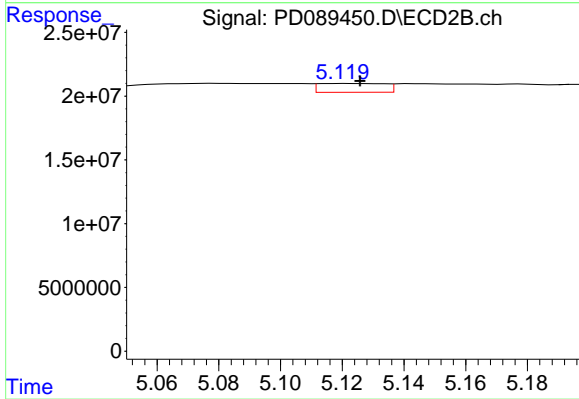
#9 Endosulfan I

R.T.: 5.226 min
 Delta R.T.: -0.021 min
 Response: 5818603
 Conc: 0.28 ng/ml



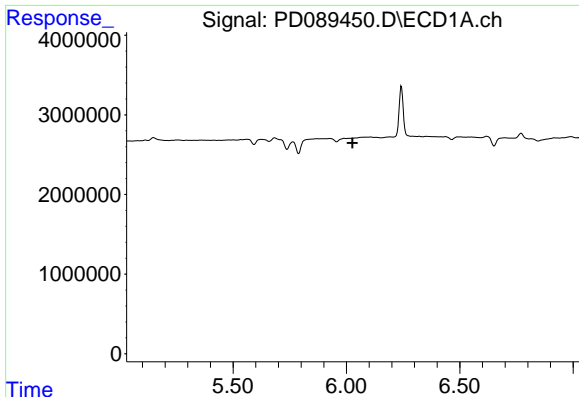
#10 gamma-Chlordane

R.T.: 0.000 min
 Exp R.T. : 5.946 min
 Response: 0
 Conc: N.D.



#10 gamma-Chlordane

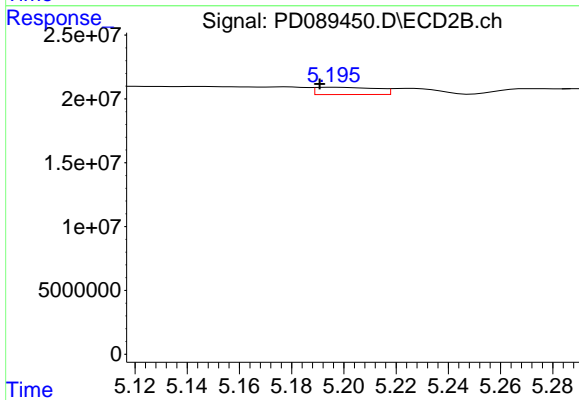
R.T.: 5.120 min
 Delta R.T.: -0.006 min
 Response: 10272327
 Conc: 0.43 ng/ml



#11 alpha-Chlordane

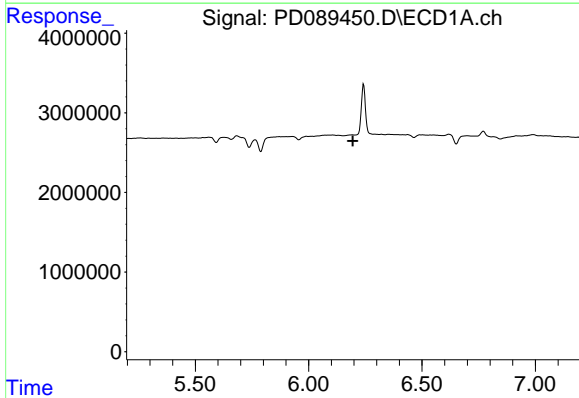
R.T.: 0.000 min
 Exp R.T.: 6.027 min
 Response: 0
 Conc: N.D.

Instrument :
 ECD_D
 ClientSampleId :
 I.BLK



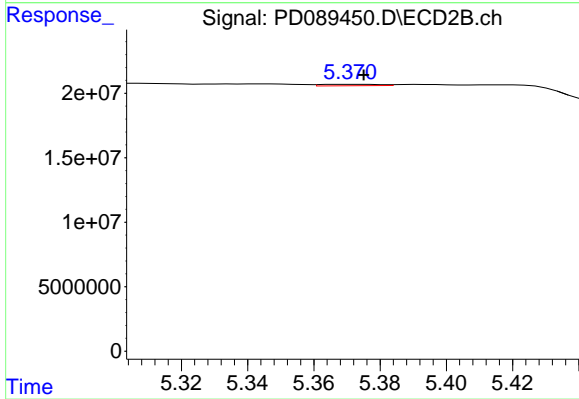
#11 alpha-Chlordane

R.T.: 5.197 min
 Delta R.T.: 0.006 min
 Response: 9204538
 Conc: 0.40 ng/ml



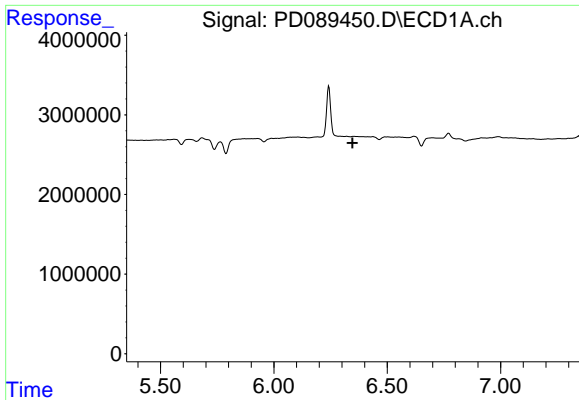
#12 4,4'-DDE

R.T.: 0.000 min
 Exp R.T.: 6.195 min
 Response: 0
 Conc: N.D.



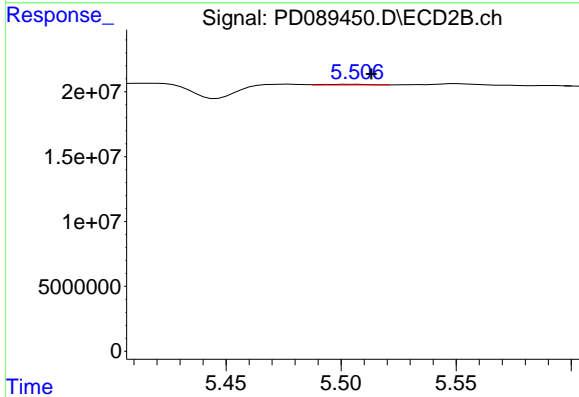
#12 4,4'-DDE

R.T.: 5.372 min
 Delta R.T.: -0.003 min
 Response: 1399236
 Conc: 0.06 ng/ml

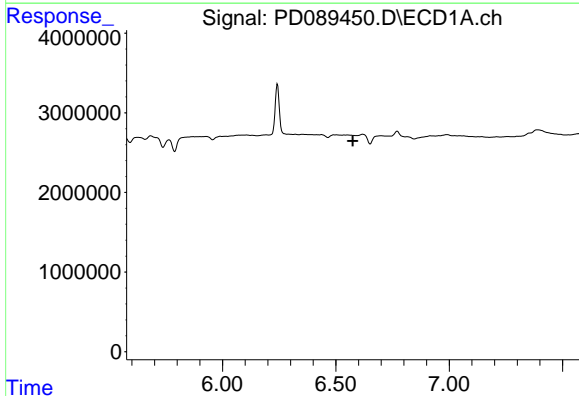


#13 Dieldrin
 R.T.: 0.000 min
 Exp R.T.: 6.347 min
 Response: 0
 Conc: N.D.

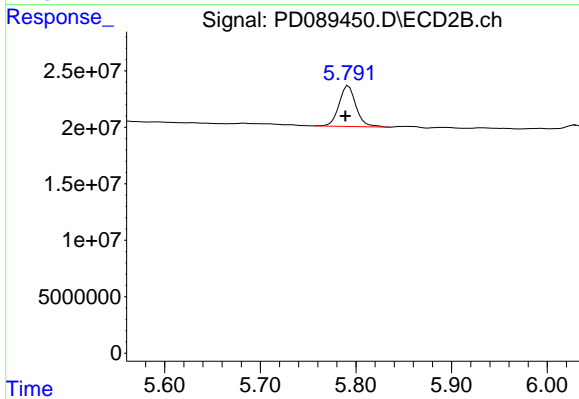
Instrument : ECD_D
 ClientSampleId : I.BLK



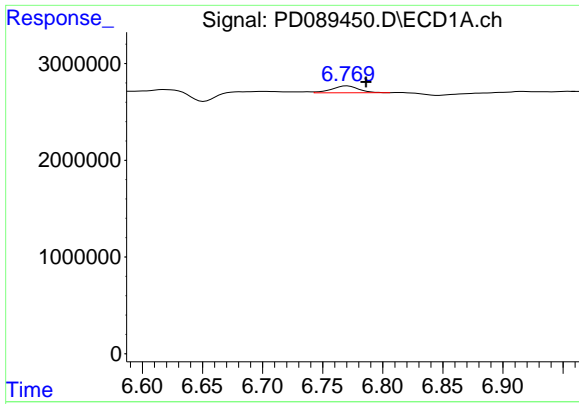
#13 Dieldrin
 R.T.: 5.506 min
 Delta R.T.: -0.007 min
 Response: 644520
 Conc: 0.03 ng/ml



#14 Endrin
 R.T.: 0.000 min
 Exp R.T.: 6.574 min
 Response: 0
 Conc: N.D.



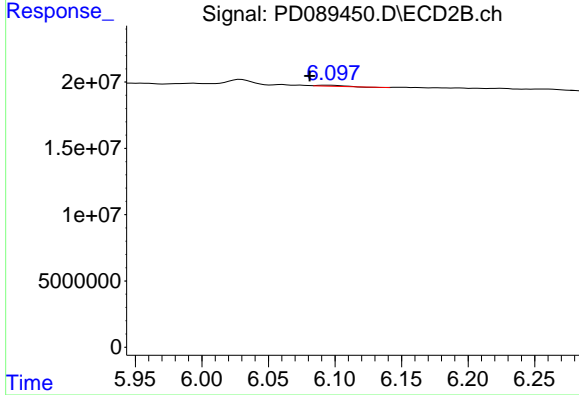
#14 Endrin
 R.T.: 5.792 min
 Delta R.T.: 0.003 min
 Response: 44468204
 Conc: 2.05 ng/ml



#15 Endosulfan II

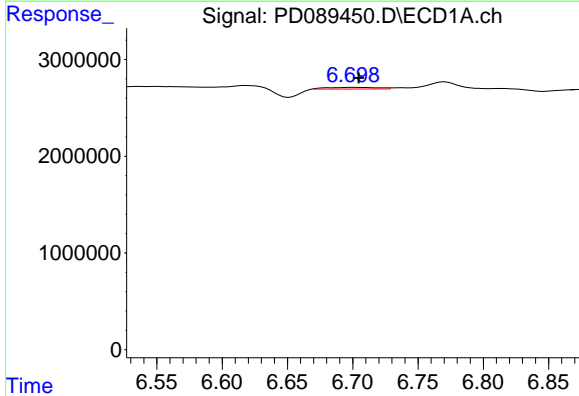
R.T.: 6.770 min
 Delta R.T.: -0.016 min
 Response: 1137425
 Conc: 0.28 ng/ml

Instrument :
 ECD_D
 ClientSampleId :
 I.BLK



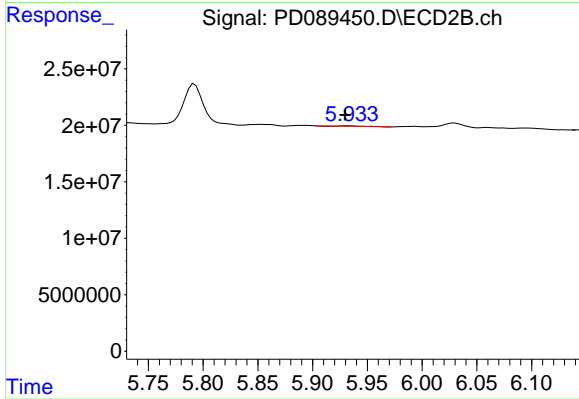
#15 Endosulfan II

R.T.: 6.095 min
 Delta R.T.: 0.014 min
 Response: 1003142
 Conc: 0.05 ng/ml



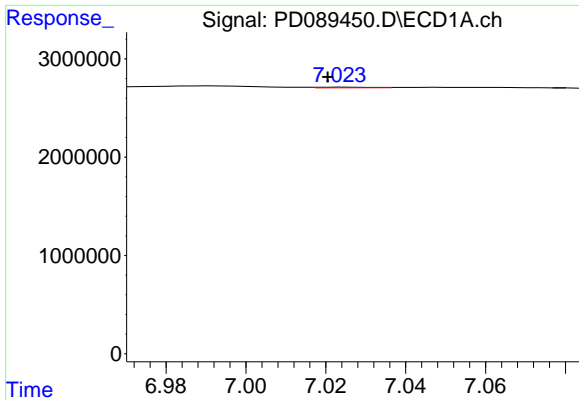
#16 4,4'-DDD

R.T.: 6.700 min
 Delta R.T.: -0.005 min
 Response: 464216
 Conc: 0.14 ng/ml



#16 4,4'-DDD

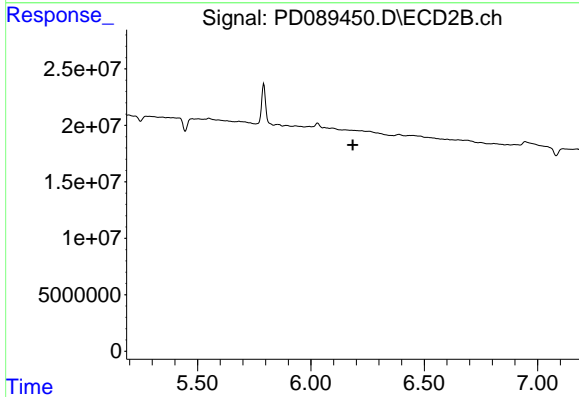
R.T.: 5.933 min
 Delta R.T.: 0.003 min
 Response: 664058
 Conc: 0.03 ng/ml



#17 4,4'-DDT

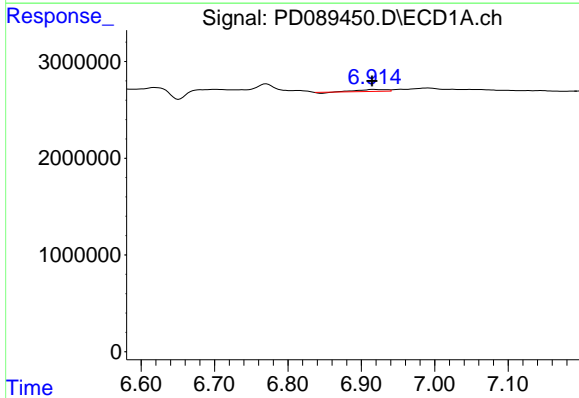
R.T.: 7.024 min
 Delta R.T.: 0.003 min
 Response: 62067
 Conc: 0.02 ng/ml

Instrument :
 ECD_D
 ClientSampleId :
 I.BLK



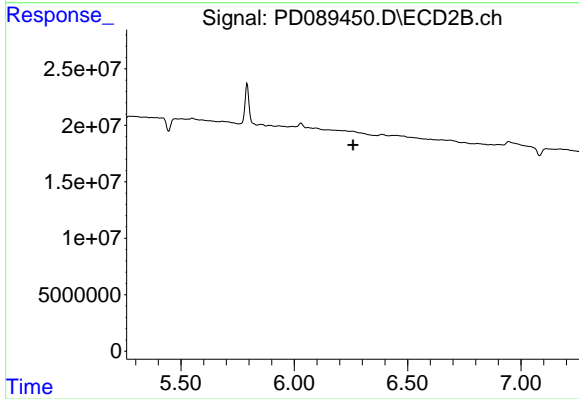
#17 4,4'-DDT

R.T.: 0.000 min
 Exp R.T. : 6.184 min
 Response: 0
 Conc: N.D.



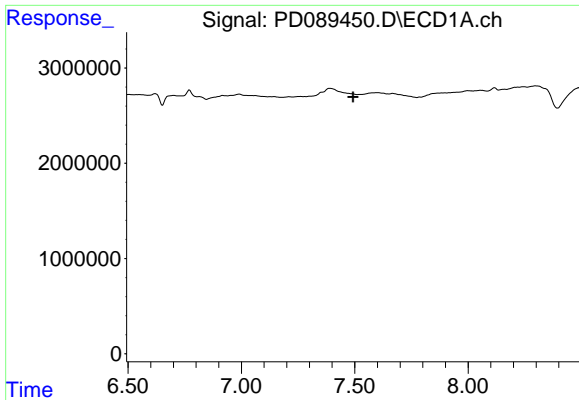
#18 Endrin aldehyde

R.T.: 6.916 min
 Delta R.T.: 0.001 min
 Response: 471074
 Conc: 0.15 ng/ml



#18 Endrin aldehyde

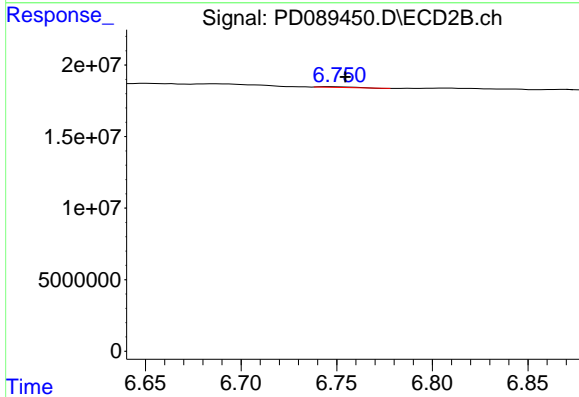
R.T.: 0.000 min
 Exp R.T. : 6.259 min
 Response: 0
 Conc: N.D.



#20 Methoxychlor

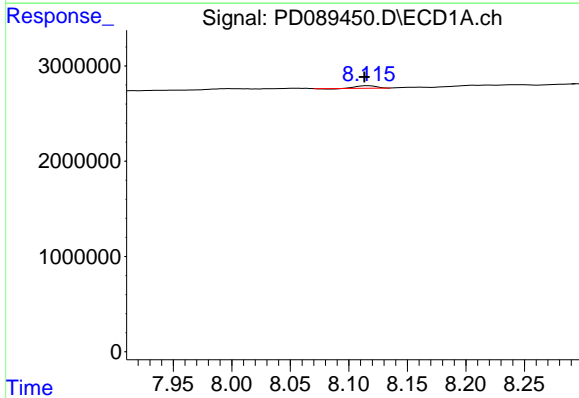
R.T.: 0.000 min
 Exp R.T.: 7.493 min
 Response: 0
 Conc: N.D.

Instrument :
 ECD_D
 ClientSampleId :
 I.BLK



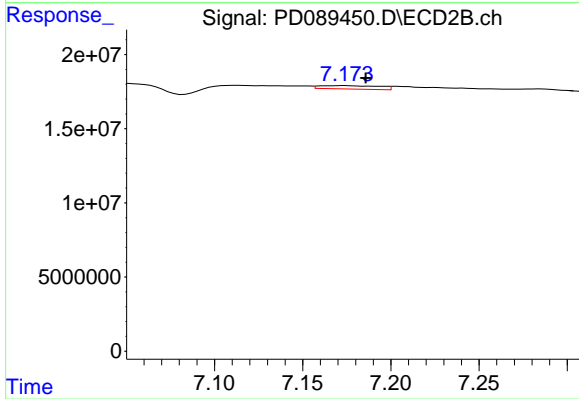
#20 Methoxychlor

R.T.: 6.746 min
 Delta R.T.: -0.008 min
 Response: 630459
 Conc: 0.06 ng/ml



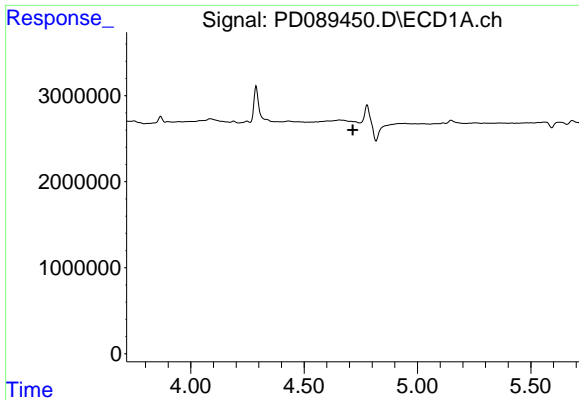
#22 Mirex

R.T.: 8.116 min
 Delta R.T.: 0.003 min
 Response: 277885
 Conc: 0.09 ng/ml



#22 Mirex

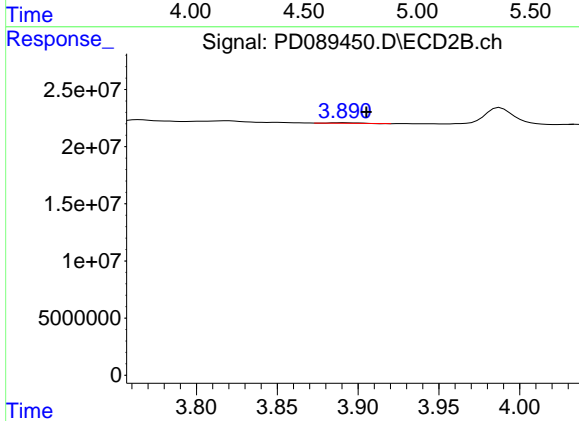
R.T.: 7.174 min
 Delta R.T.: -0.012 min
 Response: 5425498
 Conc: 0.33 ng/ml



#23 Chlordane-1

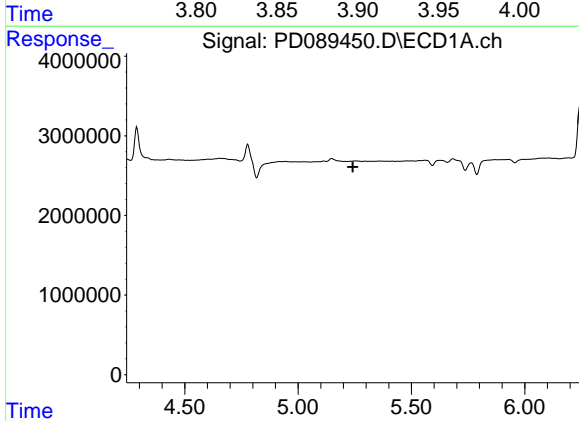
R.T.: 0.000 min
 Exp R.T. : 4.715 min
 Response: 0
 Conc: N.D.

Instrument :
 ECD_D
 ClientSampleId :
 I.BLK



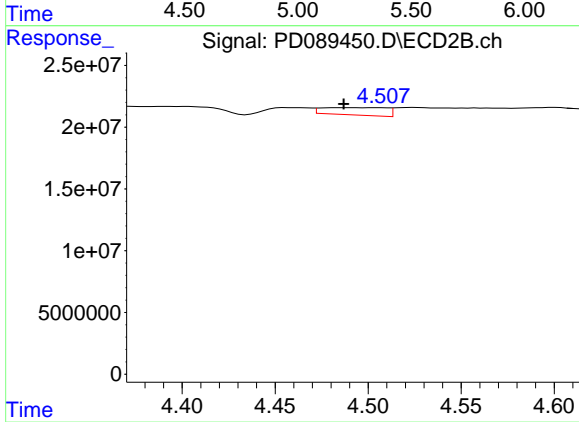
#23 Chlordane-1

R.T.: 3.891 min
 Delta R.T.: -0.014 min
 Response: 571765
 Conc: 0.61 ng/ml



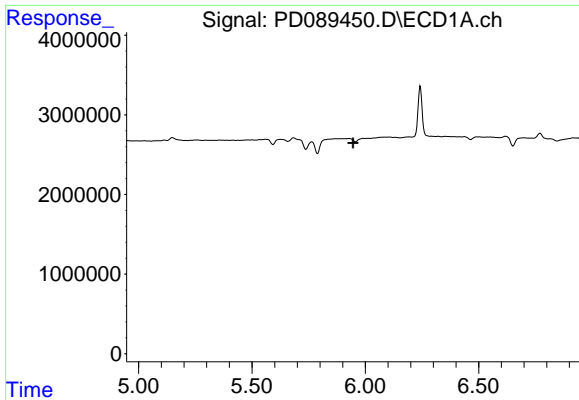
#24 Chlordane-2

R.T.: 0.000 min
 Exp R.T. : 5.241 min
 Response: 0
 Conc: N.D.



#24 Chlordane-2

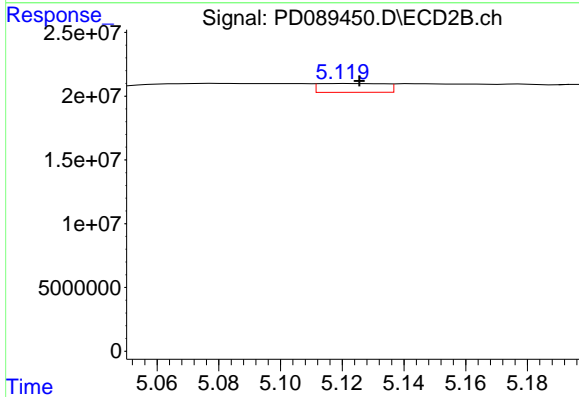
R.T.: 4.484 min
 Delta R.T.: -0.003 min
 Response: 14337532
 Conc: 15.07 ng/ml



#25 Chlordane-3

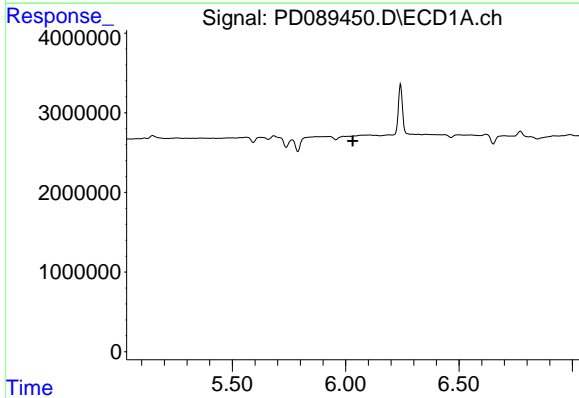
R.T.: 0.000 min
 Exp R.T.: 5.946 min
 Response: 0
 Conc: N.D.

Instrument :
 ECD_D
 ClientSampleId :
 I.BLK



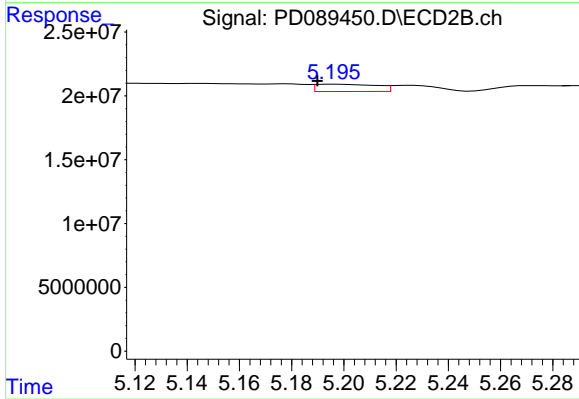
#25 Chlordane-3

R.T.: 5.120 min
 Delta R.T.: -0.005 min
 Response: 10272327
 Conc: 3.46 ng/ml



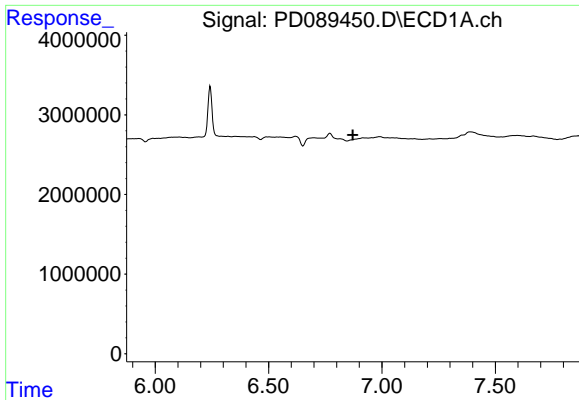
#26 Chlordane-4

R.T.: 0.000 min
 Exp R.T.: 6.032 min
 Response: 0
 Conc: N.D.



#26 Chlordane-4

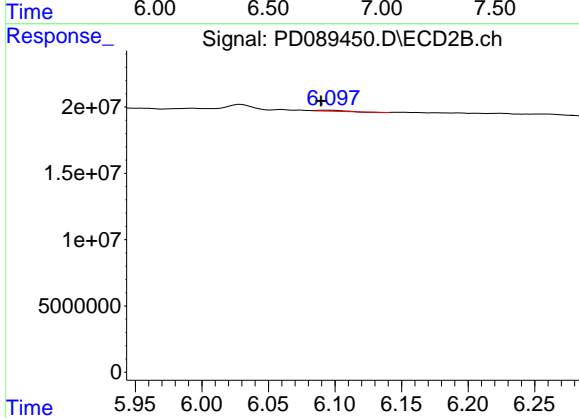
R.T.: 5.197 min
 Delta R.T.: 0.007 min
 Response: 9204538
 Conc: 3.67 ng/ml



#27 Chlordane-5

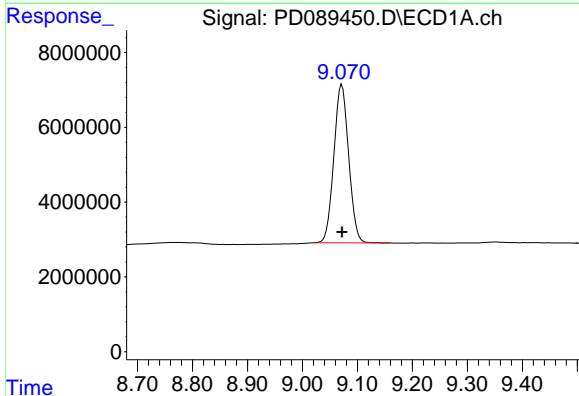
R.T.: 0.000 min
 Exp R.T.: 6.871 min
 Response: 0
 Conc: N.D.

Instrument :
 ECD_D
 ClientSampleId :
 I.BLK



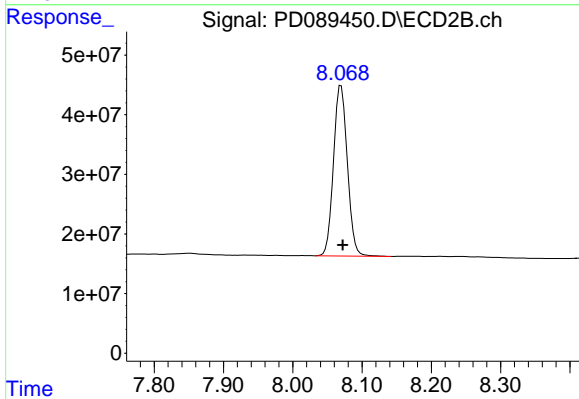
#27 Chlordane-5

R.T.: 6.095 min
 Delta R.T.: 0.006 min
 Response: 1003142
 Conc: 0.89 ng/ml



#28 Decachlorobiphenyl

R.T.: 9.072 min
 Delta R.T.: 0.000 min
 Response: 79282461
 Conc: 20.19 ng/ml



#28 Decachlorobiphenyl

R.T.: 8.070 min
 Delta R.T.: -0.002 min
 Response: 397745574
 Conc: 20.12 ng/ml