

Data Path : Z:\pestpcbsrv\HPCHEM1\ECD_D\Data\PD071125\
 Data File : PD089451.D
 Signal(s) : Signal #1: ECD1A.ch Signal #2: ECD2B.ch
 Acq On : 11 Jul 2025 10:20
 Operator : AR\AJ
 Sample : PEM
 Misc :
 ALS Vial : 3 Sample Multiplier: 1

Instrument :
 ECD_D
 ClientSampleId :

Integration File signal 1: autoint1.e
 Integration File signal 2: autoint2.e
 Quant Time: Jul 11 22:49:11 2025
 Quant Method : Z:\pestpcbsrv\HPCHEM1\ECD_D\Method\PD061825.M
 Quant Title : GC Extractables
 QLast Update : Wed Jun 18 05:39:05 2025
 Response via : Initial Calibration
 Integrator: ChemStation

Volume Inj. : 1 µl
 Signal #1 Phase : ZB-MR2 Signal #2 Phase: ZB-MR2
 Signal #1 Info : 30M x 0.32mm x0.5 Signal #2 Info : 30M x 0.32mm x 0.25µm

Compound	RT#1	RT#2	Resp#1	Resp#2	ng/ml	ng/ml
System Monitoring Compounds						
1) SA Tetrachlo...	3.550	2.880	61946166	408.3E6	21.712	24.084
28) SA Decachlor...	9.072	8.069	78252302	391.6E6	19.924	19.807
Target Compounds						
2) A alpha-BHC	3.998	3.391	59413516	336.0E6	10.193	12.539
3) MA gamma-BHC...	4.329	3.728	59485151	304.3E6	10.657	12.291
4) MA Heptachlor	0.000	4.077	0	1957945	N.D.	0.078 #
5) MB Aldrin	5.253f	4.363	422976	275635	0.080	0.011 #
6) B beta-BHC	4.515	4.023	24761652	134.4E6	11.219	12.505
7) B delta-BHC	4.776	4.251	1216742	1160646	0.237	0.047 #
8) B Heptachlo...	5.681	4.863	2270679	12759264	0.471	0.583
9) A Endosulfan I	6.101f	5.227f	314621	3696276	0.070	0.177 #
10) B gamma-Chl...	5.941	5.124	390426	33755252	0.082	1.411 #
11) B alpha-Chl...	6.032	5.185	1643882	10365284	0.340	0.453 #
12) B 4,4'-DDE	6.195	5.373	433551	2917134	0.099	0.127 #
13) MA Dieldrin	6.366f	5.484f	1445779	-3091817	0.301	N.D. #
14) MA Endrin	6.574	5.786	209.2E6	1138.1E6	50.706	52.412
15) B Endosulfa...	6.806f	6.084	1723749	5392603	0.427	0.267 #
16) A 4,4'-DDD	6.704	5.927	9257615	62882277	2.697	3.287
17) MA 4,4'-DDT	7.021	6.180	364.3E6	2014.1E6	96.159	99.317
18) B Endrin al...	6.915	6.255	1952386	19715339	0.637	1.288 #
20) A Methoxychlor	7.492	6.751	429.0E6	2017.3E6	212.293	187.340
21) B Endrin ke...	7.629	6.988	6237220	55797119	1.531	2.583 #
22) Mirex	8.118	7.174	210263	29546978	0.069	1.772 #
23) Chlordane-1	0.000	3.899	0	1444331	N.D.	1.549 #
24) Chlordane-2	5.253	4.482	422976	5494342	1.937	5.774 #
25) Chlordane-3	5.941	5.124	390426	33755252	0.453	11.365 #
26) Chlordane-4	6.032	5.185	1643882	10365284	1.565	4.135 #
27) Chlordane-5	6.868	6.084	93484	5392603	0.512	4.765 #

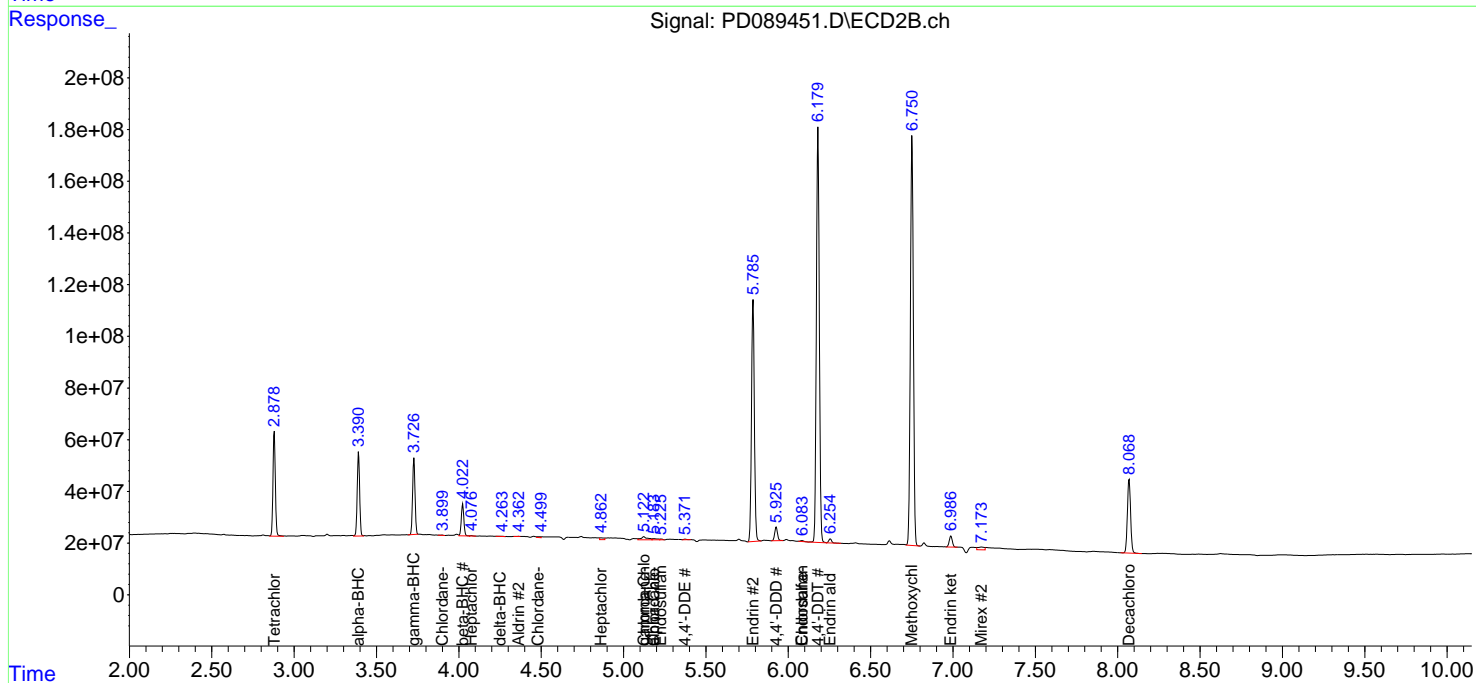
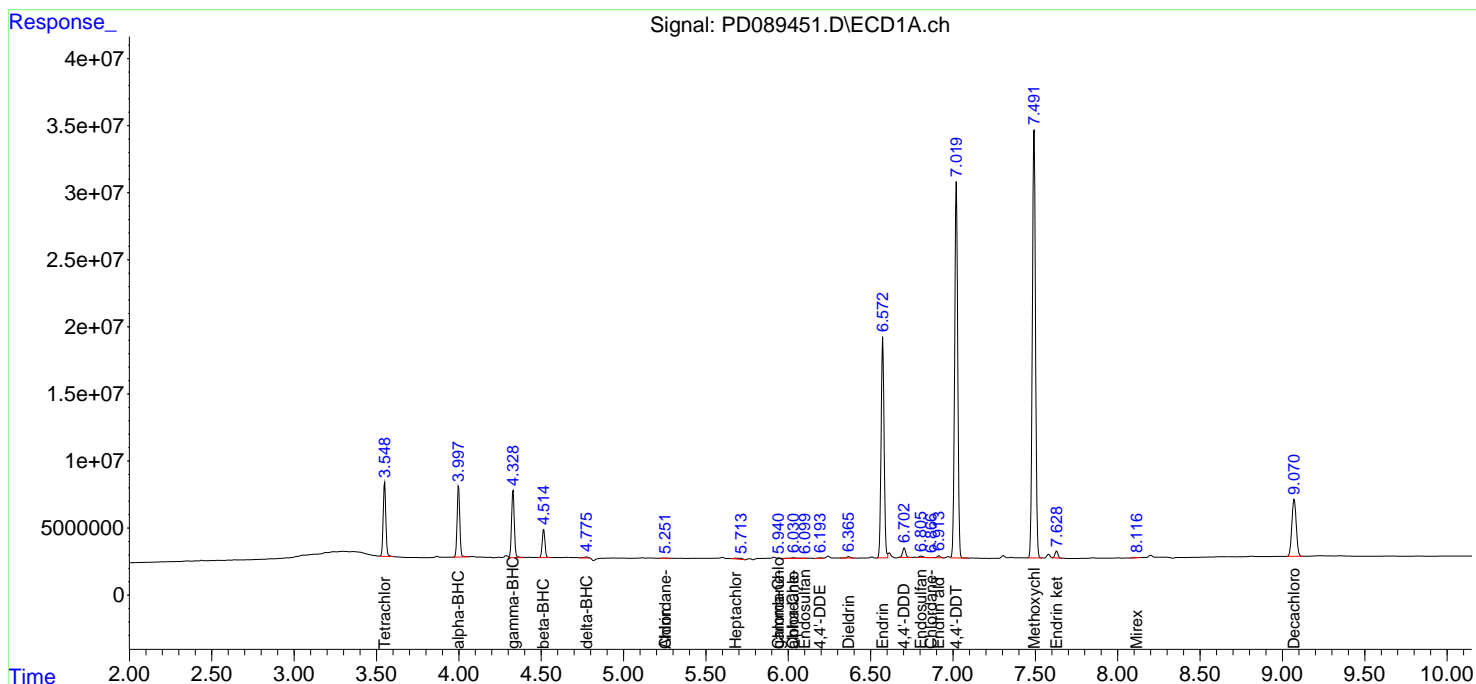
(f)=RT Delta > 1/2 Window (#)=Amounts differ by > 25% (m)=manual int.

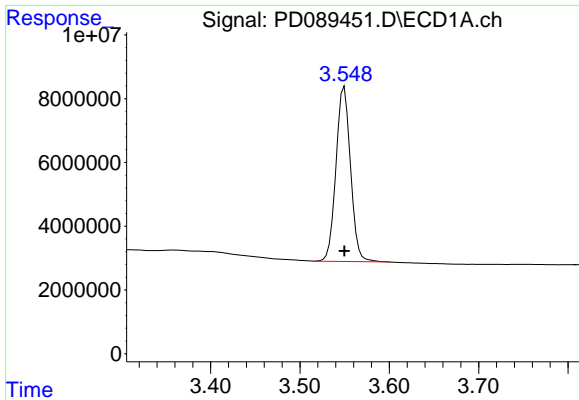
Data Path : Z:\pestpcbsrv\HPCHEM1\ECD_D\Data\PD071125\
 Data File : PD089451.D
 Signal(s) : Signal #1: ECD1A.ch Signal #2: ECD2B.ch
 Acq On : 11 Jul 2025 10:20
 Operator : AR\AJ
 Sample : PEM
 Misc :
 ALS Vial : 3 Sample Multiplier: 1

Instrument :
 ECD_D
 ClientSampleId :

Integration File signal 1: autoint1.e
 Integration File signal 2: autoint2.e
 Quant Time: Jul 11 22:49:11 2025
 Quant Method : Z:\pestpcbsrv\HPCHEM1\ECD_D\Method\PD061825.M
 Quant Title : GC Extractables
 QLast Update : Wed Jun 18 05:39:05 2025
 Response via : Initial Calibration
 Integrator: ChemStation

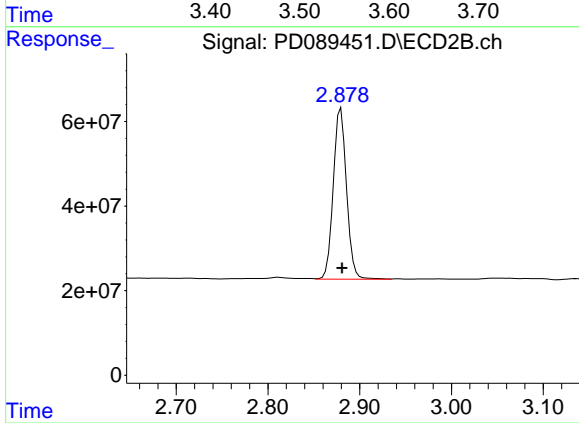
Volume Inj. : 1 µl
 Signal #1 Phase : ZB-MR1 Signal #2 Phase: ZB-MR2
 Signal #1 Info : 30M x 0.32mm x0.5 Signal #2 Info : 30M x 0.32mm x 0.25µm



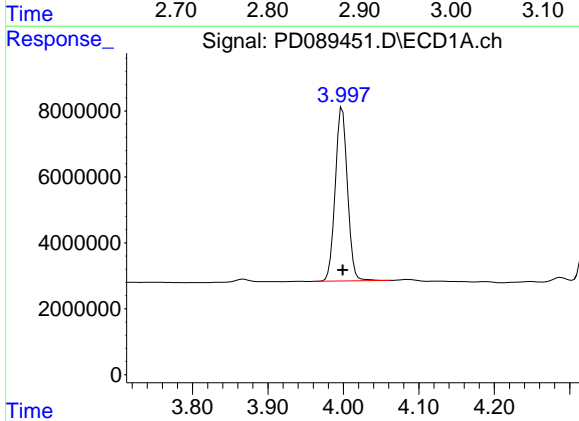


#1 Tetrachloro-m-xylene
R.T.: 3.550 min
Delta R.T.: 0.000 min
Response: 61946166
Conc: 21.71 ng/ml

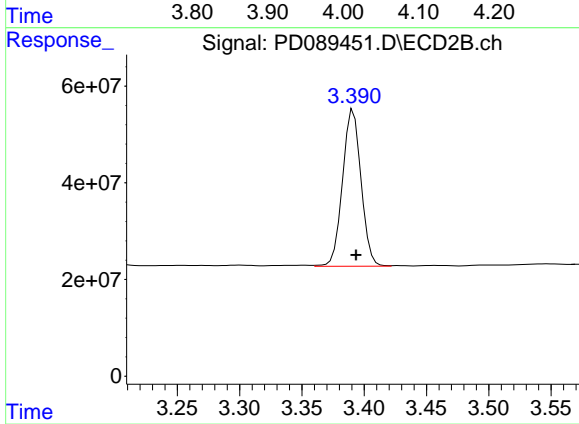
Instrument :
ECD_D
ClientSampleId :



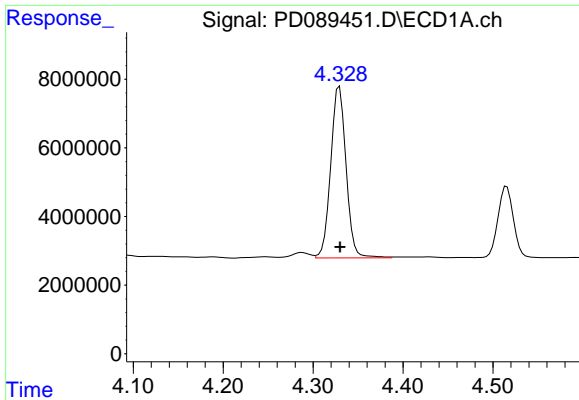
#1 Tetrachloro-m-xylene
R.T.: 2.880 min
Delta R.T.: -0.001 min
Response: 408302917
Conc: 24.08 ng/ml



#2 alpha-BHC
R.T.: 3.998 min
Delta R.T.: 0.000 min
Response: 59413516
Conc: 10.19 ng/ml

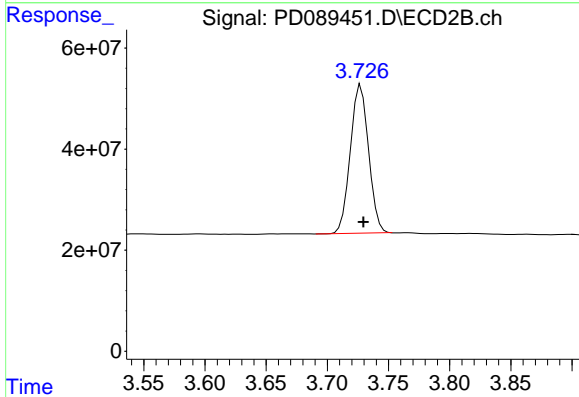


#2 alpha-BHC
R.T.: 3.391 min
Delta R.T.: -0.002 min
Response: 335999724
Conc: 12.54 ng/ml

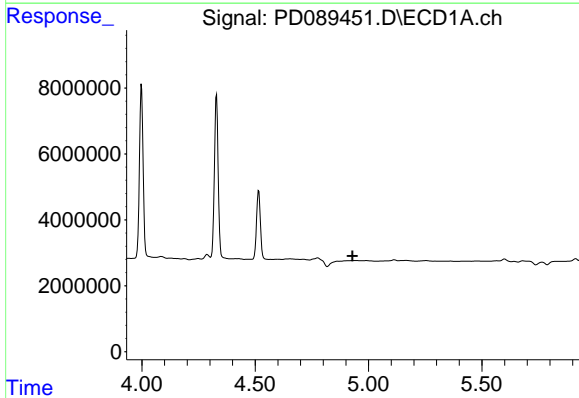


#3 gamma-BHC (Lindane)
 R.T.: 4.329 min
 Delta R.T.: 0.000 min
 Response: 59485151
 Conc: 10.66 ng/ml

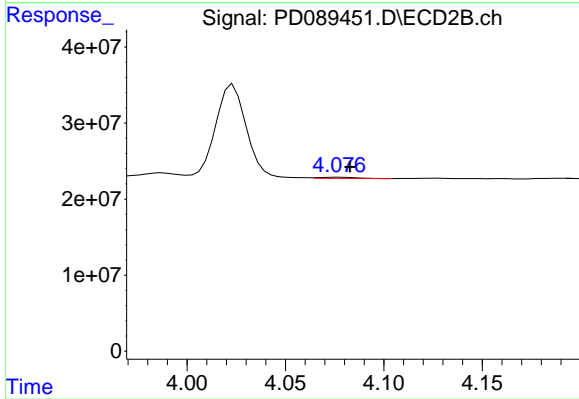
Instrument :
 ECD_D
 ClientSampleId :



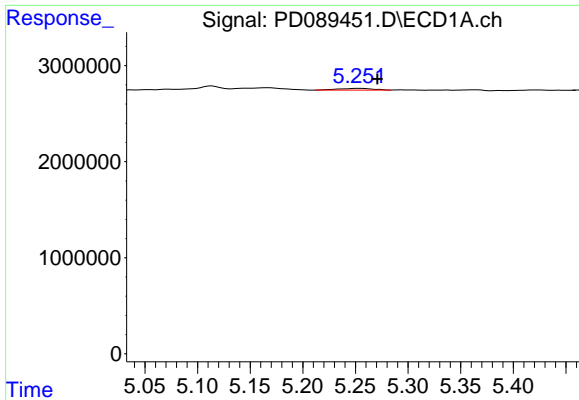
#3 gamma-BHC (Lindane)
 R.T.: 3.728 min
 Delta R.T.: -0.002 min
 Response: 304279915
 Conc: 12.29 ng/ml



#4 Heptachlor
 R.T.: 0.000 min
 Exp R.T. : 4.929 min
 Response: 0
 Conc: N.D.

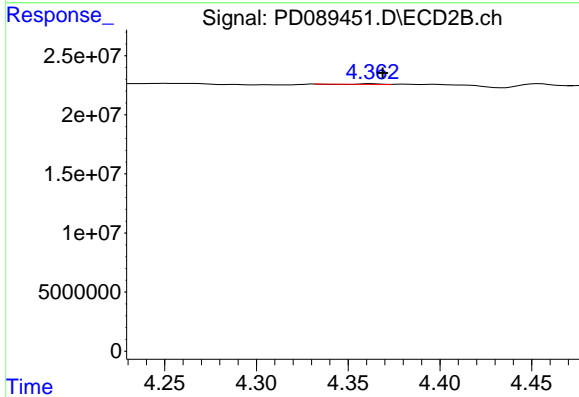


#4 Heptachlor
 R.T.: 4.077 min
 Delta R.T.: -0.005 min
 Response: 1957945
 Conc: 0.08 ng/ml

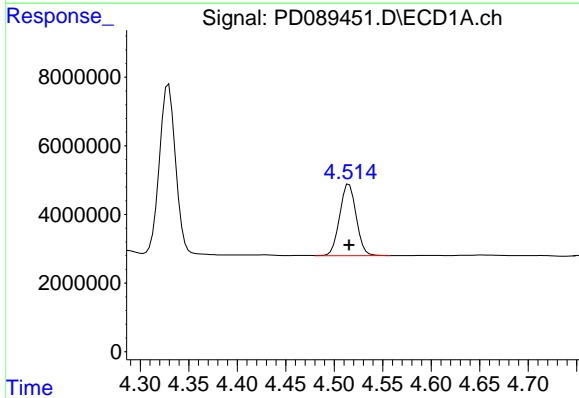


#5 Aldrin
 R.T.: 5.253 min
 Delta R.T.: -0.018 min
 Response: 422976
 Conc: 0.08 ng/ml

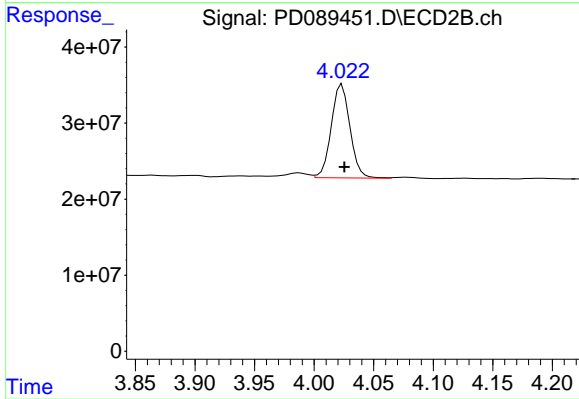
Instrument :
 ECD_D
 ClientSampleId :



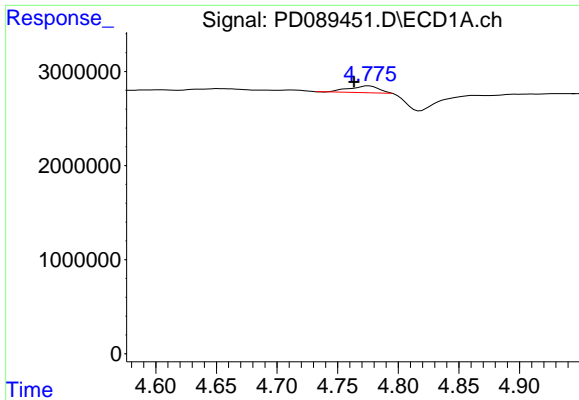
#5 Aldrin
 R.T.: 4.363 min
 Delta R.T.: -0.006 min
 Response: 275635
 Conc: 0.01 ng/ml



#6 beta-BHC
 R.T.: 4.515 min
 Delta R.T.: 0.000 min
 Response: 24761652
 Conc: 11.22 ng/ml



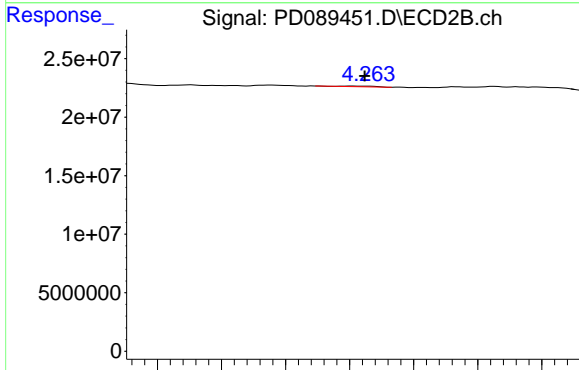
#6 beta-BHC
 R.T.: 4.023 min
 Delta R.T.: -0.002 min
 Response: 134380516
 Conc: 12.50 ng/ml



#7 delta-BHC

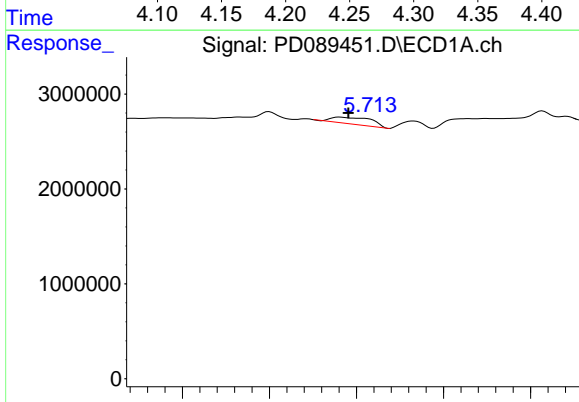
R.T.: 4.776 min
 Delta R.T.: 0.012 min
 Response: 1216742
 Conc: 0.24 ng/ml

Instrument :
 ECD_D
 ClientSampleId :



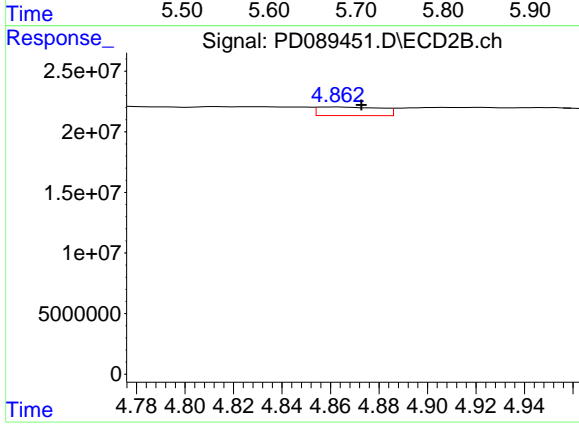
#7 delta-BHC

R.T.: 4.251 min
 Delta R.T.: -0.011 min
 Response: 1160646
 Conc: 0.05 ng/ml



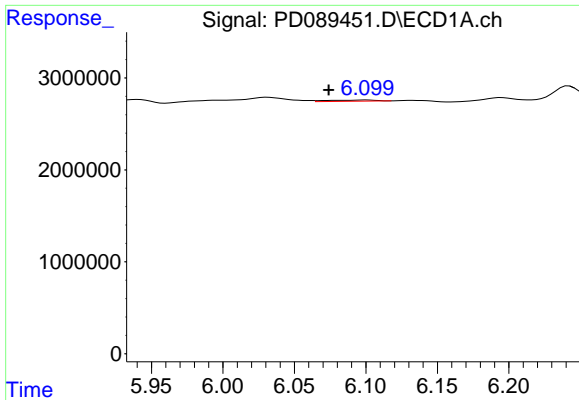
#8 Heptachlor epoxide

R.T.: 5.681 min
 Delta R.T.: -0.010 min
 Response: 2270679
 Conc: 0.47 ng/ml



#8 Heptachlor epoxide

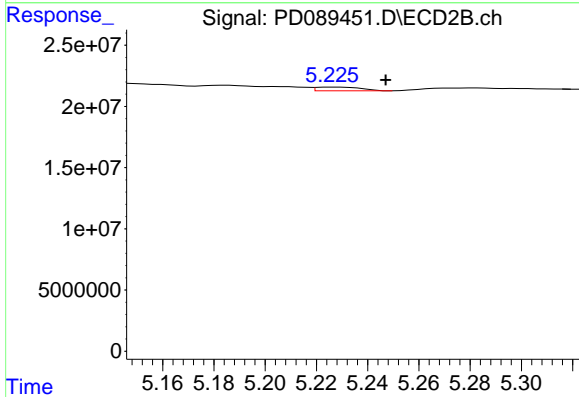
R.T.: 4.863 min
 Delta R.T.: -0.010 min
 Response: 12759264
 Conc: 0.58 ng/ml



#9 Endosulfan I

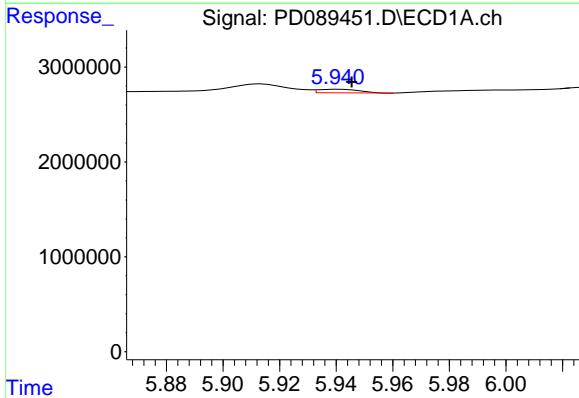
R.T.: 6.101 min
 Delta R.T.: 0.027 min
 Response: 314621
 Conc: 0.07 ng/ml

Instrument :
 ECD_D
 ClientSampleId :



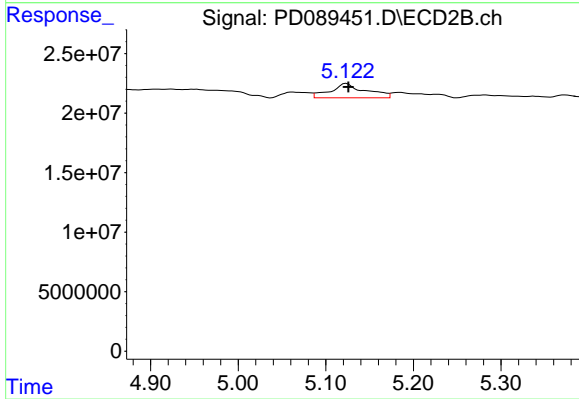
#9 Endosulfan I

R.T.: 5.227 min
 Delta R.T.: -0.021 min
 Response: 3696276
 Conc: 0.18 ng/ml



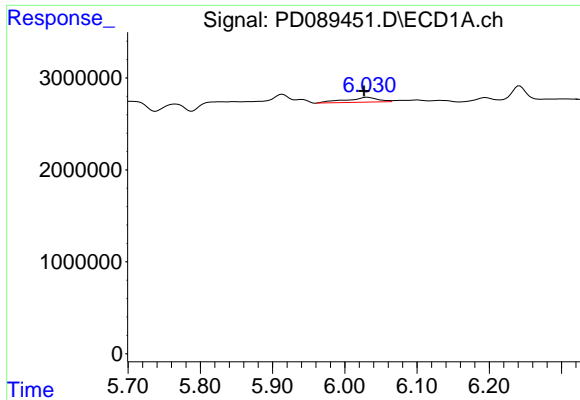
#10 gamma-Chlordane

R.T.: 5.941 min
 Delta R.T.: -0.005 min
 Response: 390426
 Conc: 0.08 ng/ml



#10 gamma-Chlordane

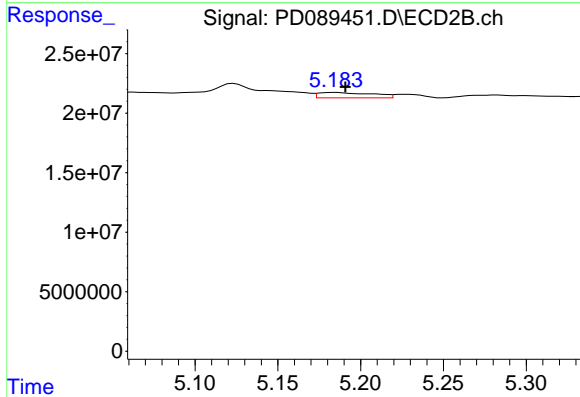
R.T.: 5.124 min
 Delta R.T.: -0.002 min
 Response: 33755252
 Conc: 1.41 ng/ml



#11 alpha-Chlordane

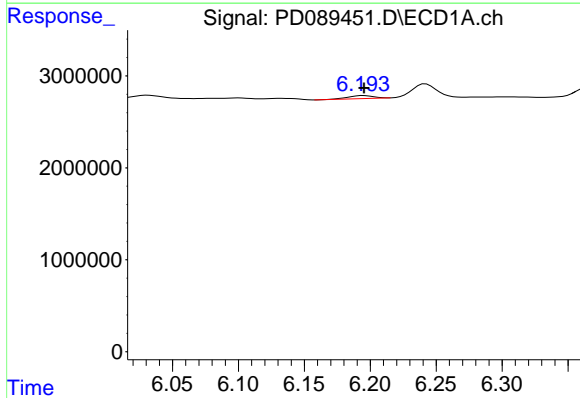
R.T.: 6.032 min
 Delta R.T.: 0.005 min
 Response: 1643882
 Conc: 0.34 ng/ml

Instrument :
 ECD_D
 ClientSampleId :



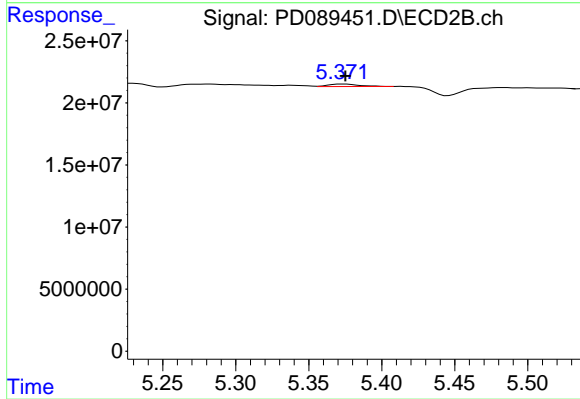
#11 alpha-Chlordane

R.T.: 5.185 min
 Delta R.T.: -0.006 min
 Response: 10365284
 Conc: 0.45 ng/ml



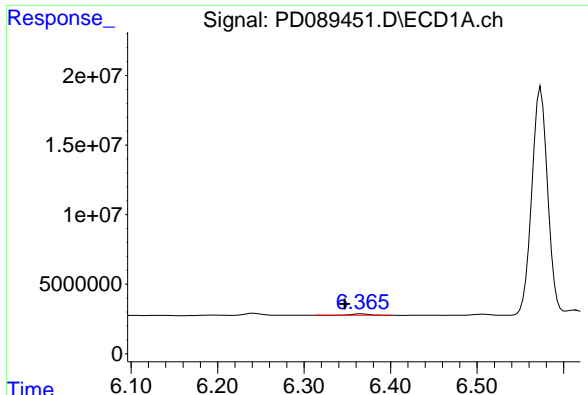
#12 4,4'-DDE

R.T.: 6.195 min
 Delta R.T.: 0.000 min
 Response: 433551
 Conc: 0.10 ng/ml



#12 4,4'-DDE

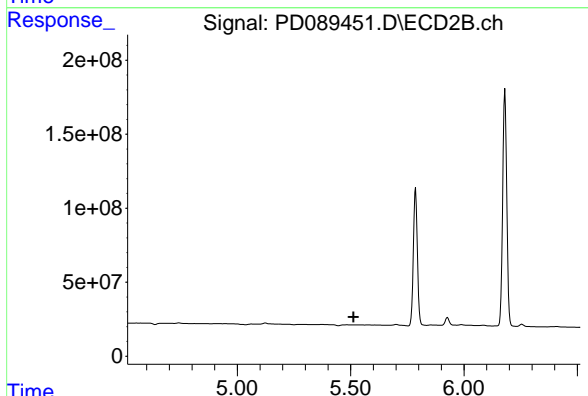
R.T.: 5.373 min
 Delta R.T.: -0.002 min
 Response: 2917134
 Conc: 0.13 ng/ml



#13 Dieldrin

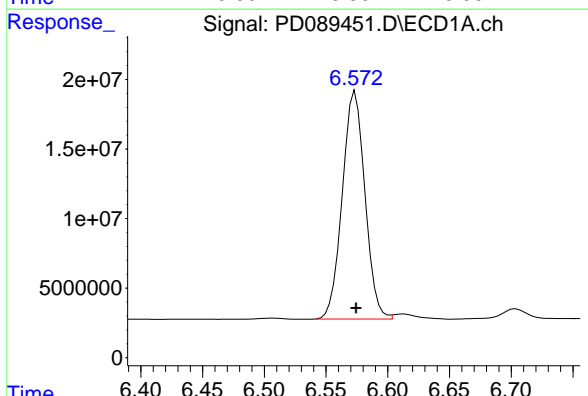
R.T.: 6.366 min
 Delta R.T.: 0.019 min
 Response: 1445779
 Conc: 0.30 ng/ml

Instrument :
 ECD_D
 ClientSampleId :



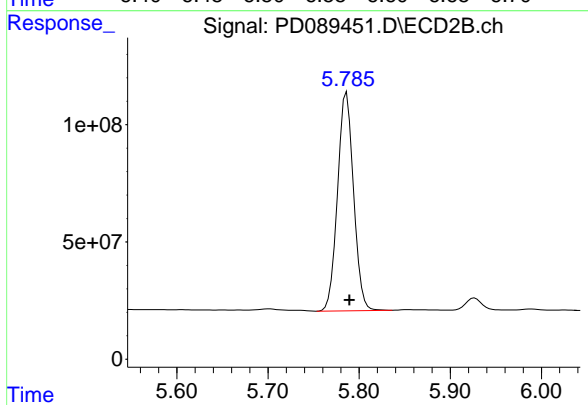
#13 Dieldrin

R.T.: 5.484 min
 Delta R.T.: -0.029 min
 Response: -3091817
 Conc: N.D.



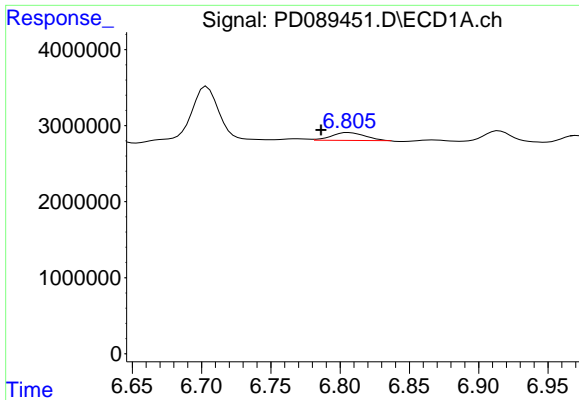
#14 Endrin

R.T.: 6.574 min
 Delta R.T.: 0.000 min
 Response: 209190736
 Conc: 50.71 ng/ml



#14 Endrin

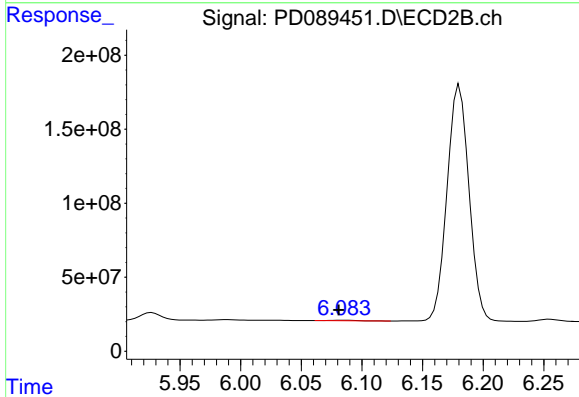
R.T.: 5.786 min
 Delta R.T.: -0.003 min
 Response: 1138070076
 Conc: 52.41 ng/ml



#15 Endosulfan II

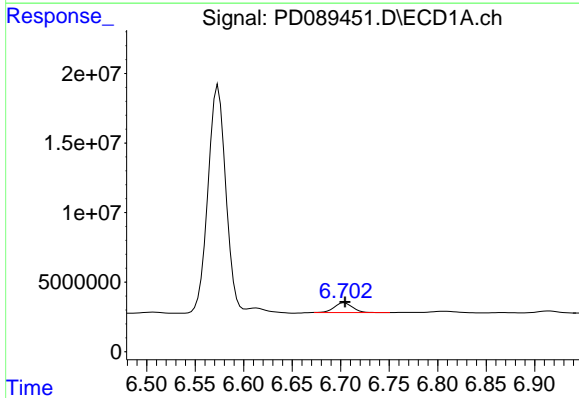
R.T.: 6.806 min
 Delta R.T.: 0.020 min
 Response: 1723749
 Conc: 0.43 ng/ml

Instrument :
 ECD_D
 ClientSampleId :



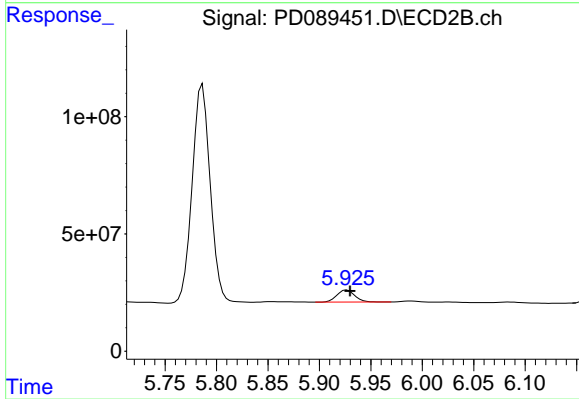
#15 Endosulfan II

R.T.: 6.084 min
 Delta R.T.: 0.004 min
 Response: 5392603
 Conc: 0.27 ng/ml



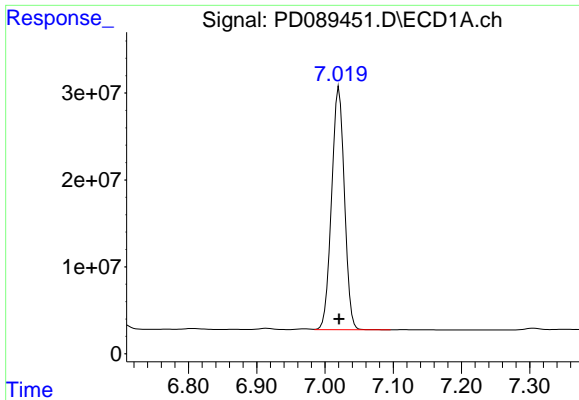
#16 4,4'-DDD

R.T.: 6.704 min
 Delta R.T.: 0.000 min
 Response: 9257615
 Conc: 2.70 ng/ml



#16 4,4'-DDD

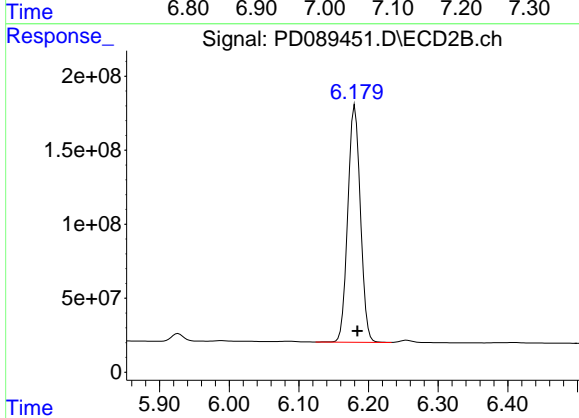
R.T.: 5.927 min
 Delta R.T.: -0.003 min
 Response: 62882277
 Conc: 3.29 ng/ml



#17 4,4'-DDT

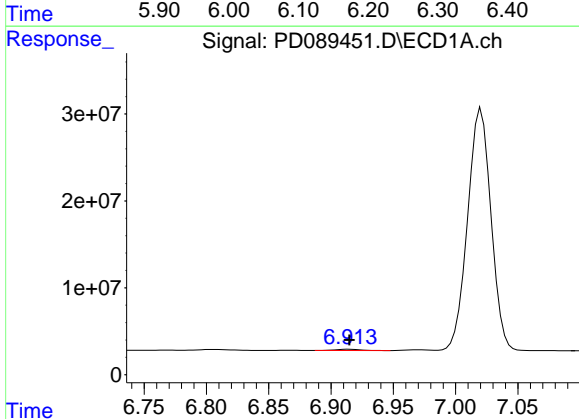
R.T.: 7.021 min
 Delta R.T.: 0.000 min
 Response: 364269700
 Conc: 96.16 ng/ml

Instrument :
 ECD_D
 ClientSampleId :



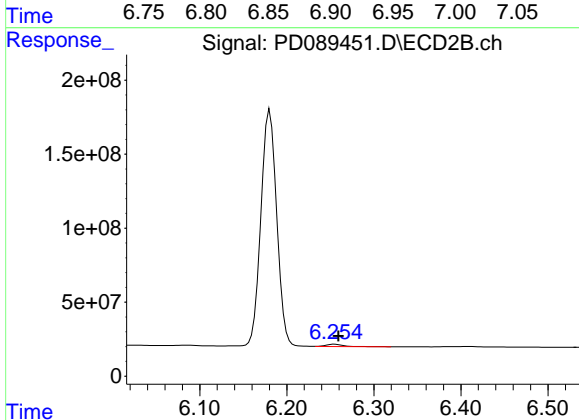
#17 4,4'-DDT

R.T.: 6.180 min
 Delta R.T.: -0.004 min
 Response: 2014089263
 Conc: 99.32 ng/ml



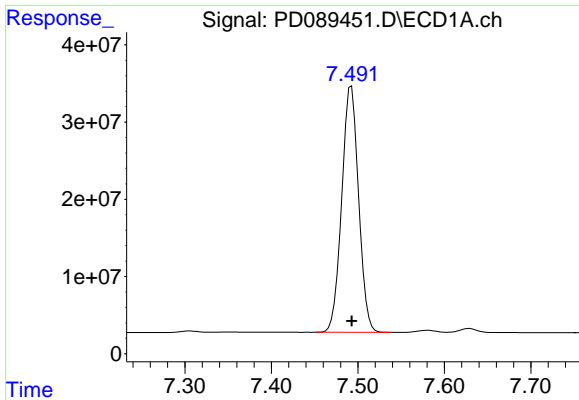
#18 Endrin aldehyde

R.T.: 6.915 min
 Delta R.T.: 0.000 min
 Response: 1952386
 Conc: 0.64 ng/ml



#18 Endrin aldehyde

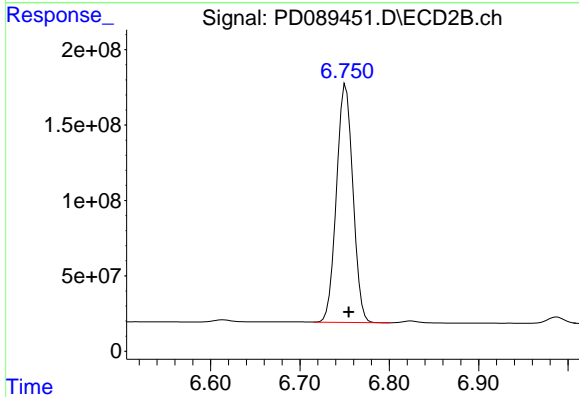
R.T.: 6.255 min
 Delta R.T.: -0.004 min
 Response: 19715339
 Conc: 1.29 ng/ml



#20 Methoxychlor

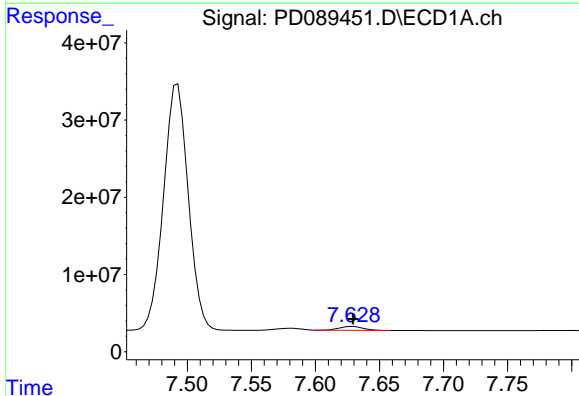
R.T.: 7.492 min
 Delta R.T.: 0.000 min
 Response: 428965852
 Conc: 212.29 ng/ml

Instrument :
 ECD_D
 ClientSampleId :



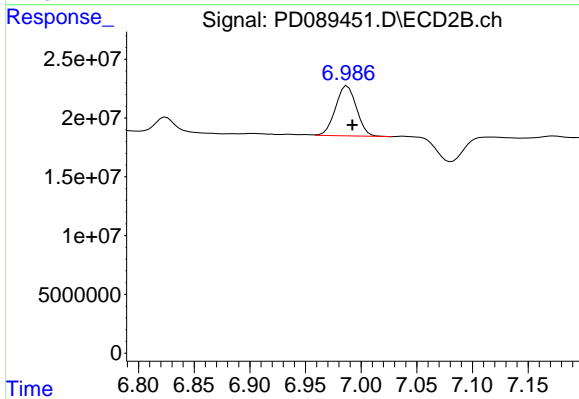
#20 Methoxychlor

R.T.: 6.751 min
 Delta R.T.: -0.003 min
 Response: 2017296001
 Conc: 187.34 ng/ml



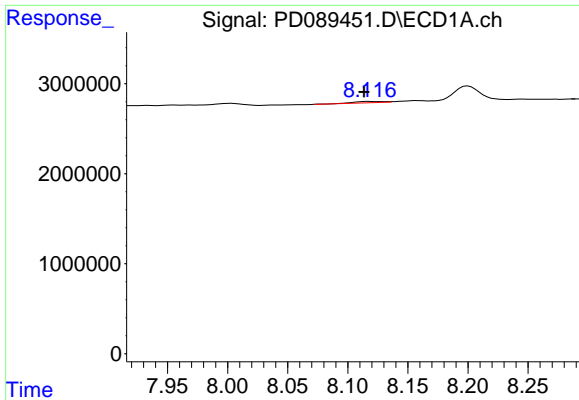
#21 Endrin ketone

R.T.: 7.629 min
 Delta R.T.: 0.000 min
 Response: 6237220
 Conc: 1.53 ng/ml



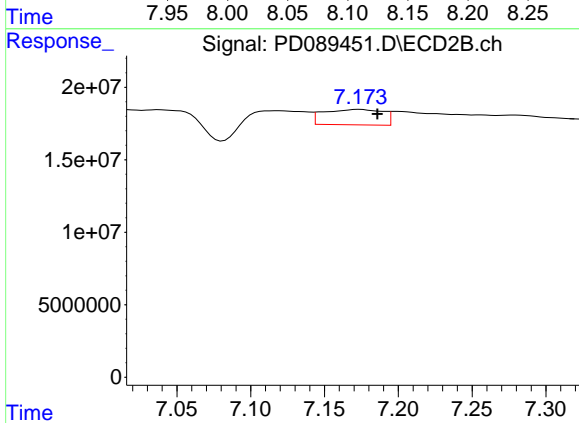
#21 Endrin ketone

R.T.: 6.988 min
 Delta R.T.: -0.004 min
 Response: 55797119
 Conc: 2.58 ng/ml

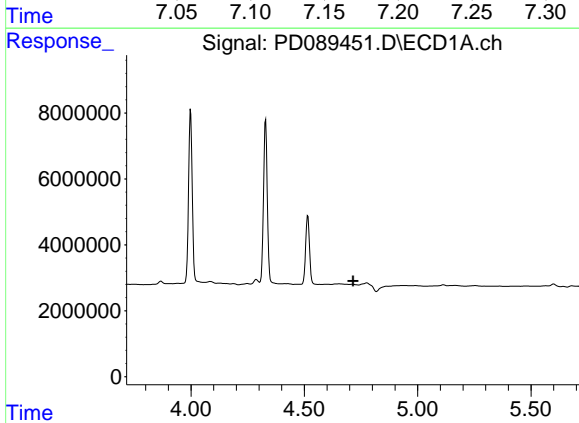


#22 Mirex
 R.T.: 8.118 min
 Delta R.T.: 0.004 min
 Response: 210263
 Conc: 0.07 ng/ml

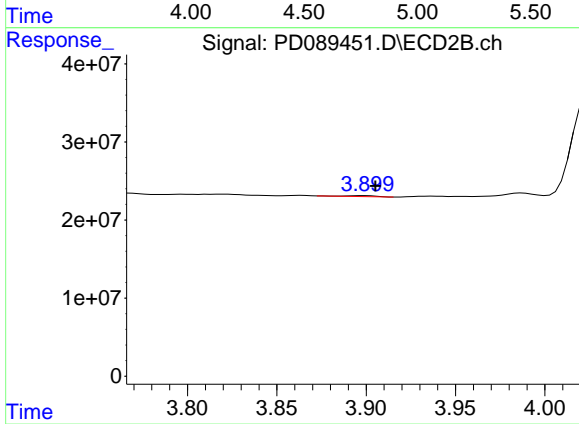
Instrument :
 ECD_D
 ClientSampleId :



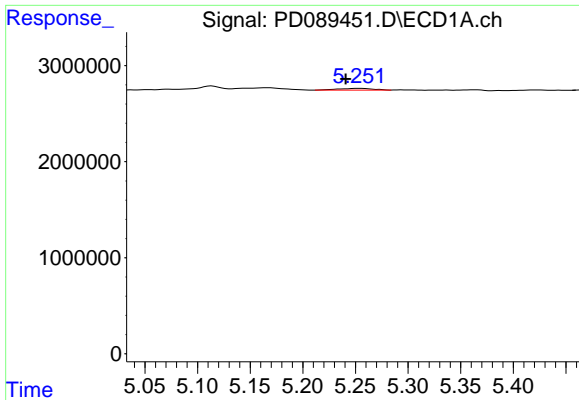
#22 Mirex
 R.T.: 7.174 min
 Delta R.T.: -0.012 min
 Response: 29546978
 Conc: 1.77 ng/ml



#23 Chlordane-1
 R.T.: 0.000 min
 Exp R.T. : 4.715 min
 Response: 0
 Conc: N.D.



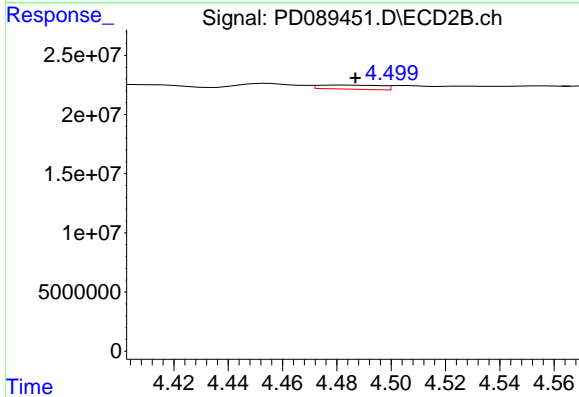
#23 Chlordane-1
 R.T.: 3.899 min
 Delta R.T.: -0.006 min
 Response: 1444331
 Conc: 1.55 ng/ml



#24 Chlordane-2

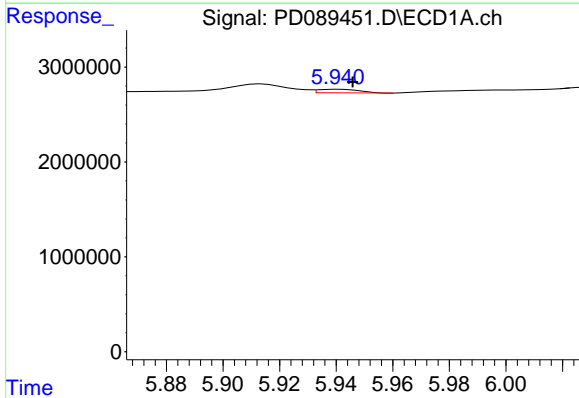
R.T.: 5.253 min
 Delta R.T.: 0.012 min
 Response: 422976
 Conc: 1.94 ng/ml

Instrument :
 ECD_D
 ClientSampleId :



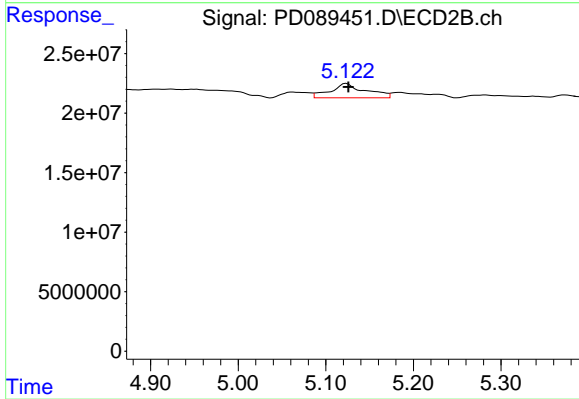
#24 Chlordane-2

R.T.: 4.482 min
 Delta R.T.: -0.004 min
 Response: 5494342
 Conc: 5.77 ng/ml



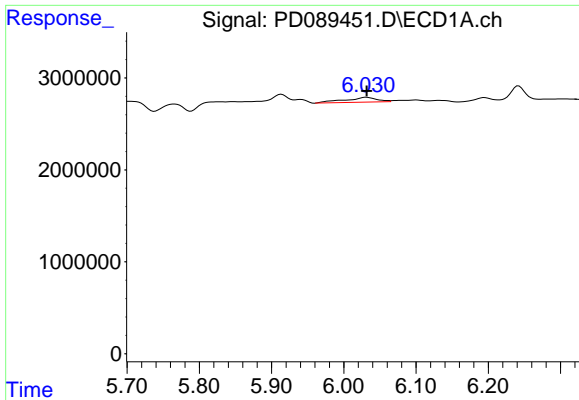
#25 Chlordane-3

R.T.: 5.941 min
 Delta R.T.: -0.005 min
 Response: 390426
 Conc: 0.45 ng/ml



#25 Chlordane-3

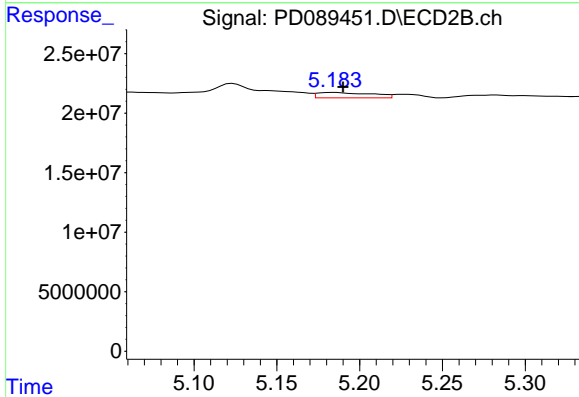
R.T.: 5.124 min
 Delta R.T.: -0.002 min
 Response: 33755252
 Conc: 11.36 ng/ml



#26 Chlordane-4

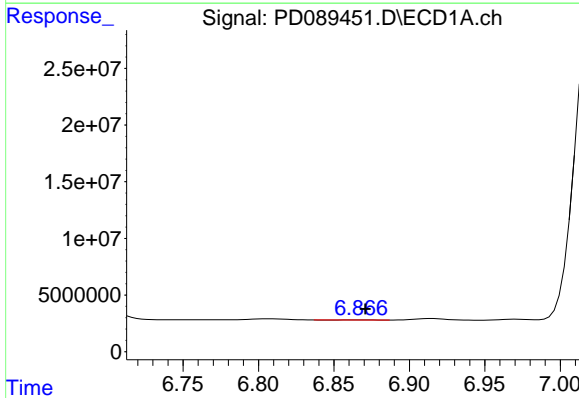
R.T.: 6.032 min
 Delta R.T.: 0.000 min
 Response: 1643882
 Conc: 1.56 ng/ml

Instrument :
 ECD_D
 ClientSampleId :



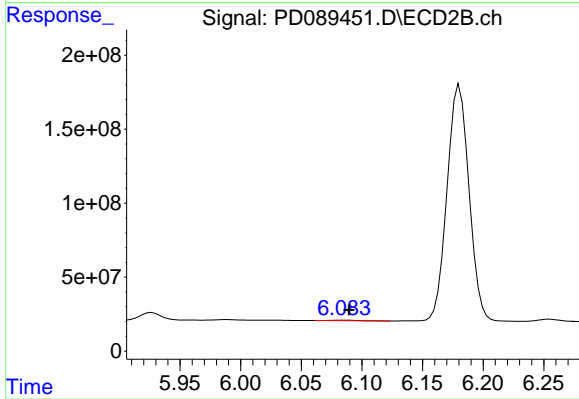
#26 Chlordane-4

R.T.: 5.185 min
 Delta R.T.: -0.005 min
 Response: 10365284
 Conc: 4.13 ng/ml



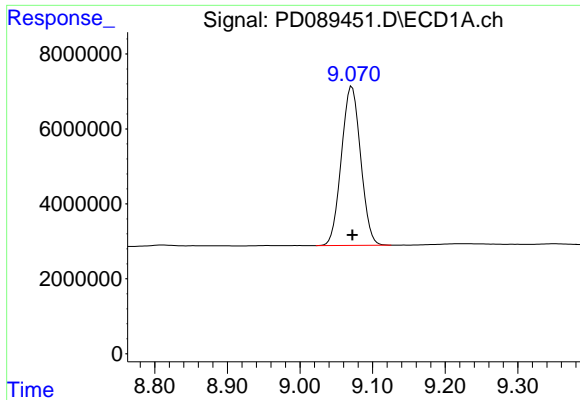
#27 Chlordane-5

R.T.: 6.868 min
 Delta R.T.: -0.003 min
 Response: 93484
 Conc: 0.51 ng/ml



#27 Chlordane-5

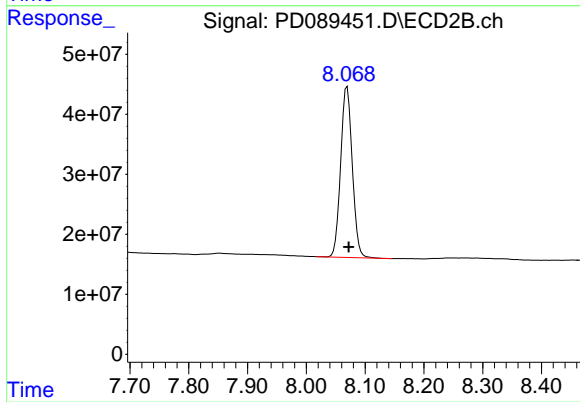
R.T.: 6.084 min
 Delta R.T.: -0.005 min
 Response: 5392603
 Conc: 4.77 ng/ml



#28 Decachlorobiphenyl

R.T.: 9.072 min
Delta R.T.: 0.000 min
Response: 78252302
Conc: 19.92 ng/ml

Instrument :
ECD_D
ClientSampleId :



#28 Decachlorobiphenyl

R.T.: 8.069 min
Delta R.T.: -0.003 min
Response: 391583283
Conc: 19.81 ng/ml