

Data Path : Z:\pestpcbsrv\HPCHEM1\ECD_D\Data\PD071125\
 Data File : PD089453.D
 Signal(s) : Signal #1: ECD1A.ch Signal #2: ECD2B.ch
 Acq On : 11 Jul 2025 13:01
 Operator : AR\AJ
 Sample : PB168810BL
 Misc :
 ALS Vial : 5 Sample Multiplier: 1

Instrument :
 ECD_D
 ClientSampleId :

Integration File signal 1: autoint1.e
 Integration File signal 2: autoint2.e
 Quant Time: Jul 11 22:50:19 2025
 Quant Method : Z:\pestpcbsrv\HPCHEM1\ECD_D\Method\PD061825.M
 Quant Title : GC Extractables
 QLast Update : Wed Jun 18 05:39:05 2025
 Response via : Initial Calibration
 Integrator: ChemStation

Volume Inj. : 1 µl
 Signal #1 Phase : ZB-MR2 Signal #2 Phase: ZB-MR2
 Signal #1 Info : 30M x 0.32mm x0.5 Signal #2 Info : 30M x 0.32mm x 0.25µm

Compound	RT#1	RT#2	Resp#1	Resp#2	ng/ml	ng/ml

System Monitoring Compounds						
1) SA Tetrachlo...	3.557	2.878	47158864	336.6E6	16.529	19.854
28) SA Decachlor...	9.082	8.072	66353362	341.4E6	16.894	17.269
Target Compounds						
2) A alpha-BHC	0.000	3.381	0	5501383	N.D.	0.205 #
3) MA gamma-BHC...	0.000	3.723	0	560839	N.D.	0.023 #
4) MA Heptachlor	0.000	4.104f	0	257212	N.D.	0.010 #
5) MB Aldrin	0.000	4.375	0	317761	N.D.	0.013 #
7) B delta-BHC	4.786f	4.259	161685	-48421	0.031	N.D. #
9) A Endosulfan I	6.046f	0.000	84402	0	0.019	N.D. #
10) B gamma-Chl...	0.000	5.127	0	2583447	N.D.	0.108 #
11) B alpha-Chl...	6.046f	5.176	84402	2225163	0.017	0.097 #
12) B 4,4'-DDE	0.000	5.359f	0	1163837	N.D.	0.051 #
13) MA Dieldrin	0.000	5.483f	0	745325	N.D.	0.032 #
14) MA Endrin	0.000	5.793	0	3328033	N.D.	0.153 #
15) B Endosulfa...	6.779	0.000	1925849	0	0.477	N.D. #
17) MA 4,4'-DDT	7.004f	6.192	291650	1839902	0.077	0.091
18) B Endrin al...	0.000	6.265	0	4657365	N.D.	0.304 #
20) A Methoxychlor	0.000	6.749	0	672845	N.D.	0.062 #
24) Chlordane-2	0.000	4.478	0	680465	N.D.	0.715 #
25) Chlordane-3	0.000	5.127	0	2583447	N.D.	0.870 #
26) Chlordane-4	6.046	5.176	84402	2225163	0.080	0.888 #

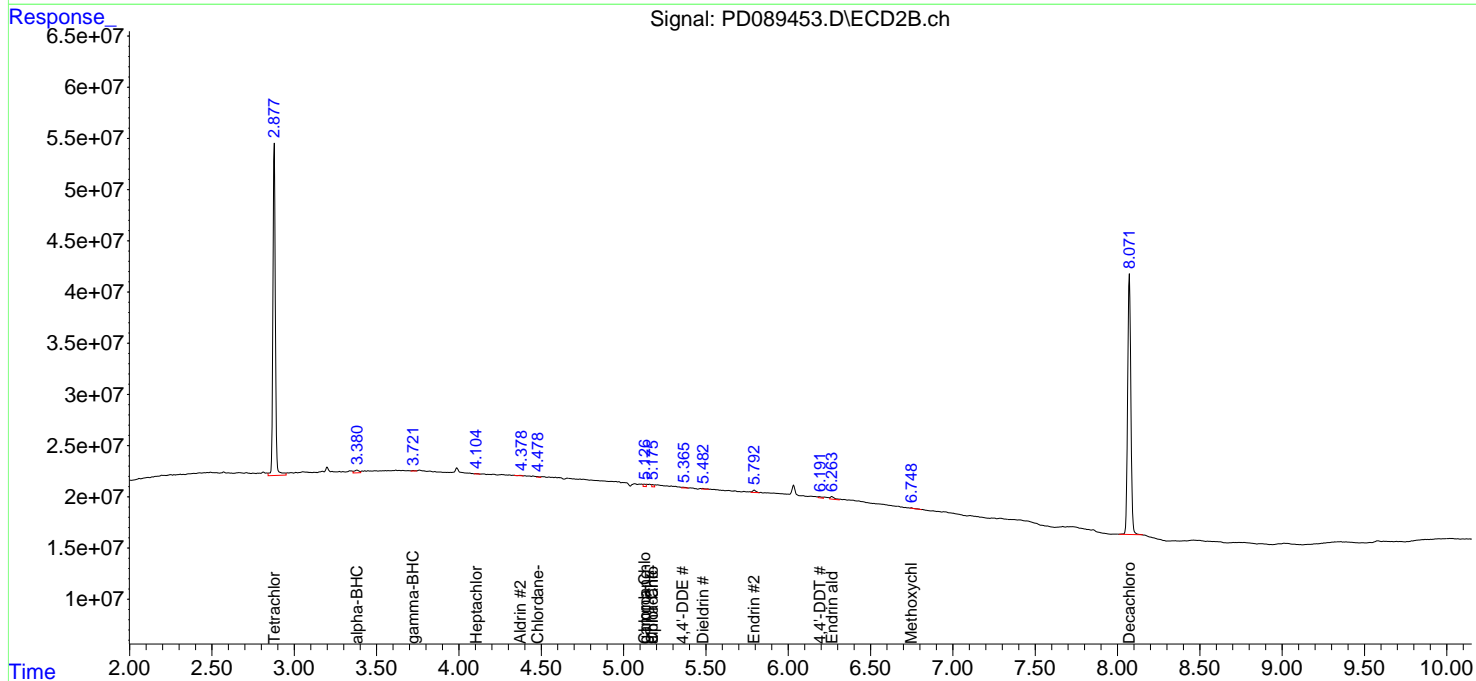
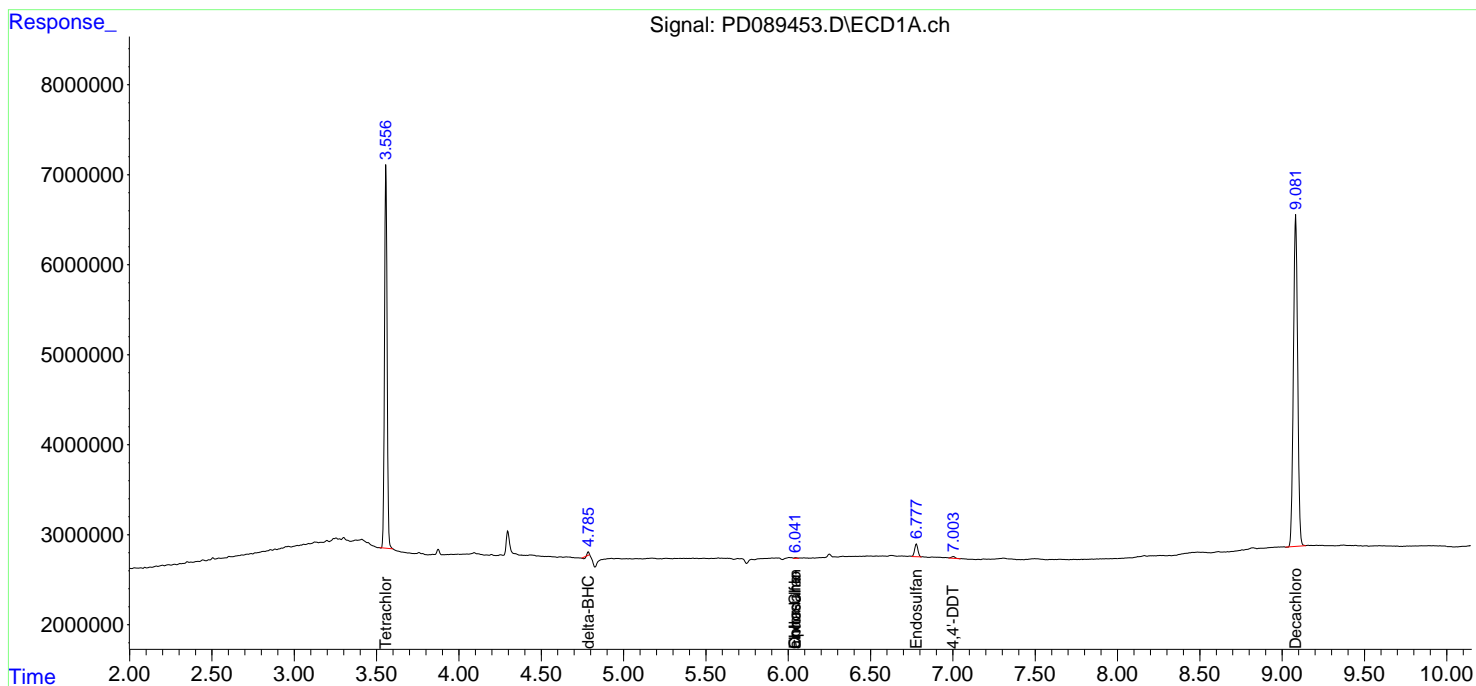
(f)=RT Delta > 1/2 Window (#)=Amounts differ by > 25% (m)=manual int.

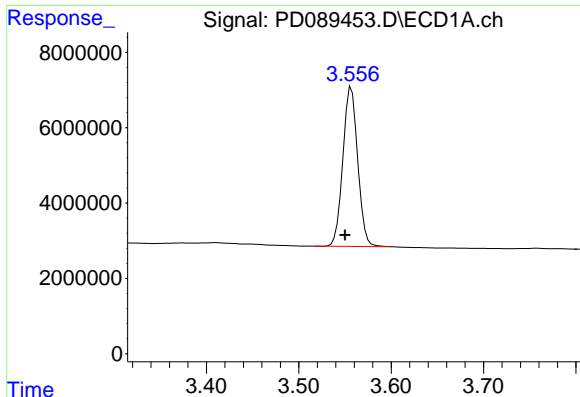
Data Path : Z:\pestpcbsrv\HPCHEM1\ECD_D\Data\PD071125\
 Data File : PD089453.D
 Signal(s) : Signal #1: ECD1A.ch Signal #2: ECD2B.ch
 Acq On : 11 Jul 2025 13:01
 Operator : AR\AJ
 Sample : PB168810BL
 Misc :
 ALS Vial : 5 Sample Multiplier: 1

Instrument :
 ECD_D
 ClientSampleId :

Integration File signal 1: autoint1.e
 Integration File signal 2: autoint2.e
 Quant Time: Jul 11 22:50:19 2025
 Quant Method : Z:\pestpcbsrv\HPCHEM1\ECD_D\Method\PD061825.M
 Quant Title : GC Extractables
 QLast Update : Wed Jun 18 05:39:05 2025
 Response via : Initial Calibration
 Integrator: ChemStation

Volume Inj. : 1 µl
 Signal #1 Phase : ZB-MR1 Signal #2 Phase: ZB-MR2
 Signal #1 Info : 30M x 0.32mm x0.5 Signal #2 Info : 30M x 0.32mm x 0.25µm

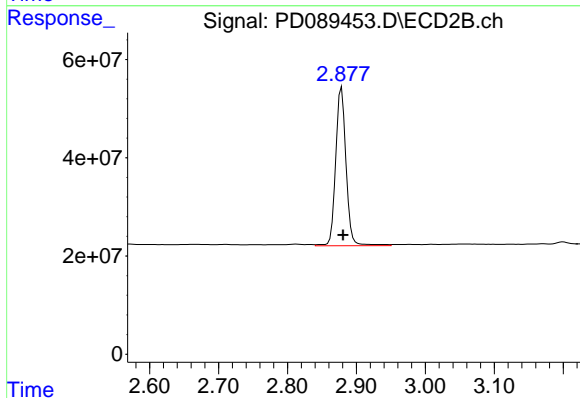




#1 Tetrachloro-m-xylene

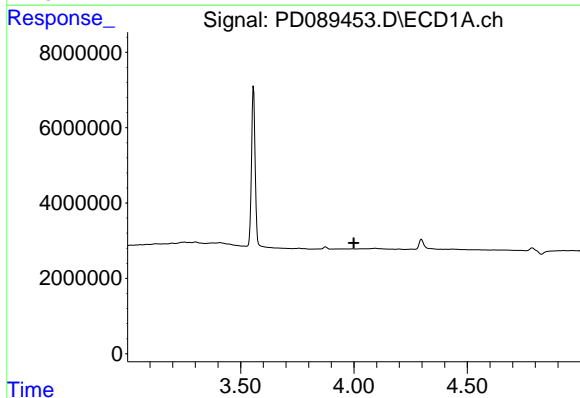
R.T.: 3.557 min
 Delta R.T.: 0.007 min
 Response: 47158864
 Conc: 16.53 ng/ml

Instrument :
 ECD_D
 ClientSampleId :



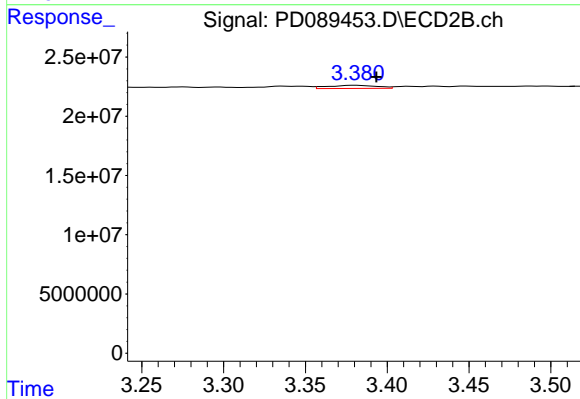
#1 Tetrachloro-m-xylene

R.T.: 2.878 min
 Delta R.T.: -0.002 min
 Response: 336592703
 Conc: 19.85 ng/ml



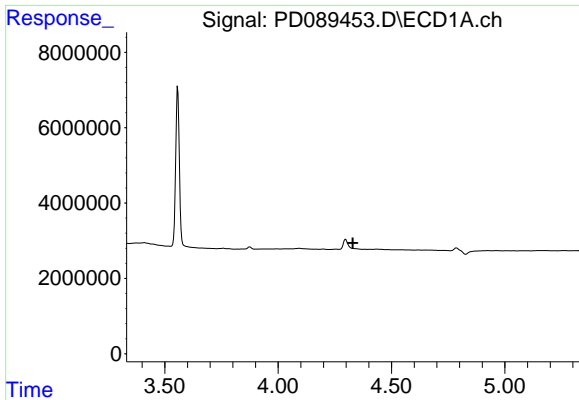
#2 alpha-BHC

R.T.: 0.000 min
 Exp R.T. : 3.999 min
 Response: 0
 Conc: N.D.



#2 alpha-BHC

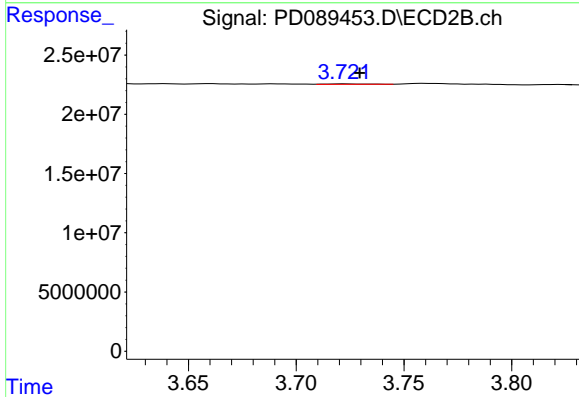
R.T.: 3.381 min
 Delta R.T.: -0.012 min
 Response: 5501383
 Conc: 0.21 ng/ml



#3 gamma-BHC (Lindane)

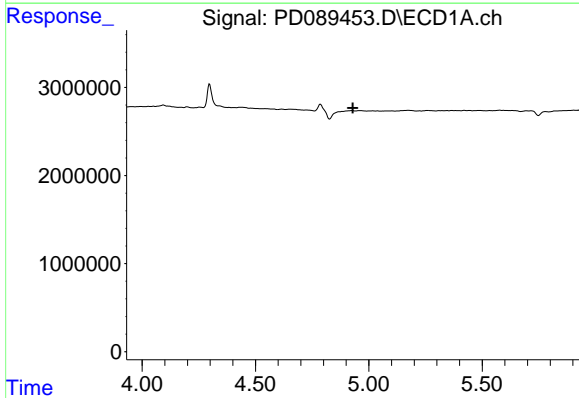
R.T.: 0.000 min
 Exp R.T. : 4.330 min
 Response: 0
 Conc: N.D.

Instrument :
 ECD_D
 ClientSampleId :



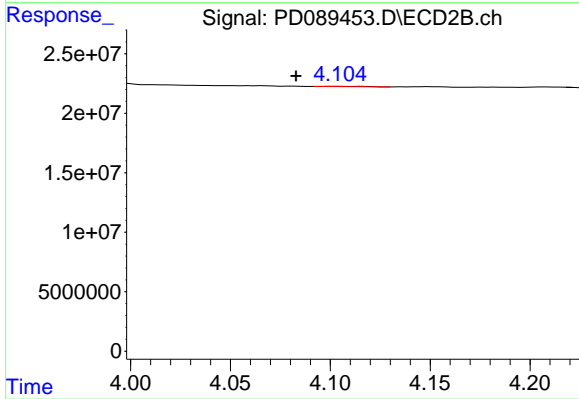
#3 gamma-BHC (Lindane)

R.T.: 3.723 min
 Delta R.T.: -0.007 min
 Response: 560839
 Conc: 0.02 ng/ml



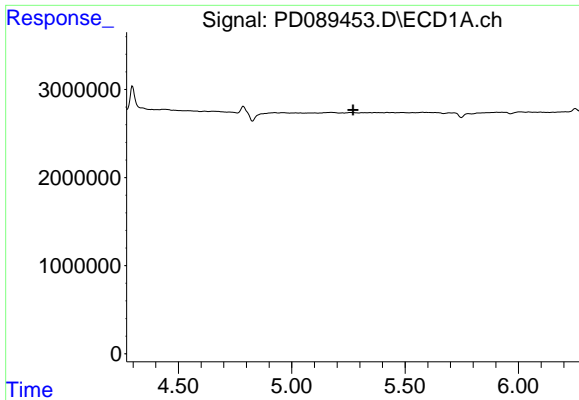
#4 Heptachlor

R.T.: 0.000 min
 Exp R.T. : 4.929 min
 Response: 0
 Conc: N.D.



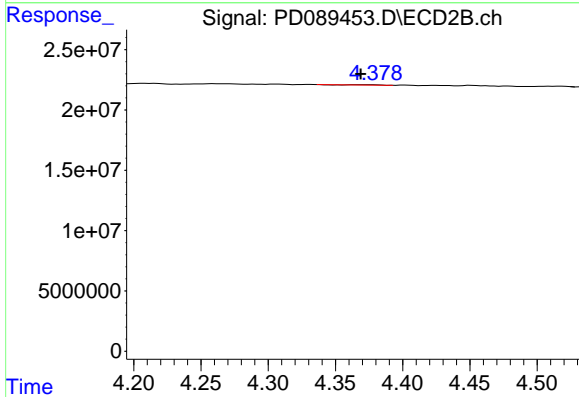
#4 Heptachlor

R.T.: 4.104 min
 Delta R.T.: 0.021 min
 Response: 257212
 Conc: 0.01 ng/ml

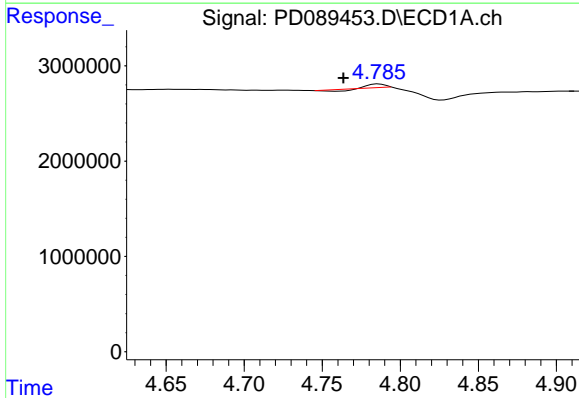


#5 Aldrin
 R.T.: 0.000 min
 Exp R.T.: 5.271 min
 Response: 0
 Conc: N.D.

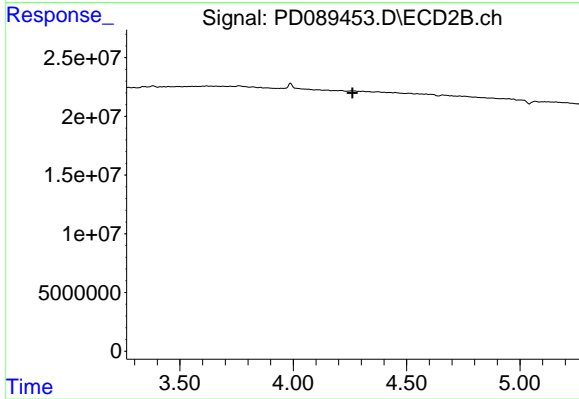
Instrument :
 ECD_D
 ClientSampleId :



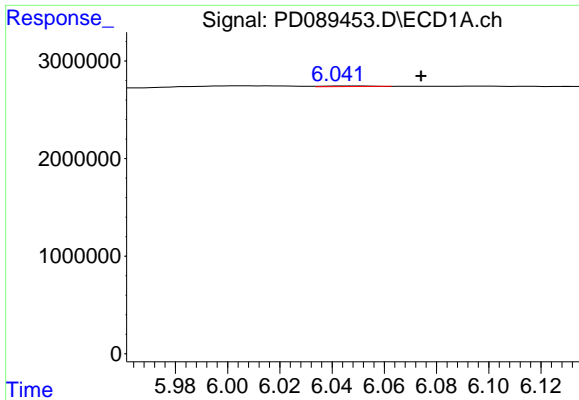
#5 Aldrin
 R.T.: 4.375 min
 Delta R.T.: 0.006 min
 Response: 317761
 Conc: 0.01 ng/ml



#7 delta-BHC
 R.T.: 4.786 min
 Delta R.T.: 0.023 min
 Response: 161685
 Conc: 0.03 ng/ml



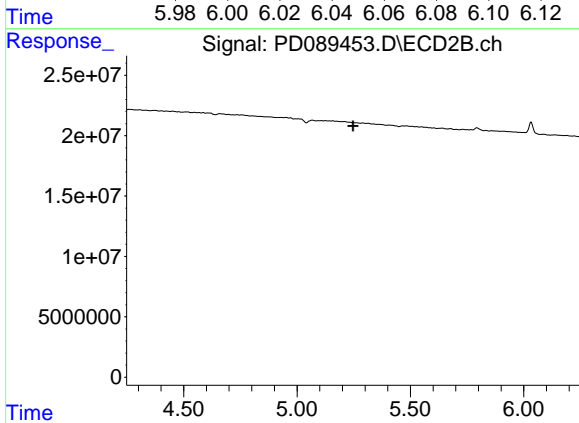
#7 delta-BHC
 R.T.: 4.259 min
 Delta R.T.: -0.003 min
 Response: -48421
 Conc: N.D.



#9 Endosulfan I

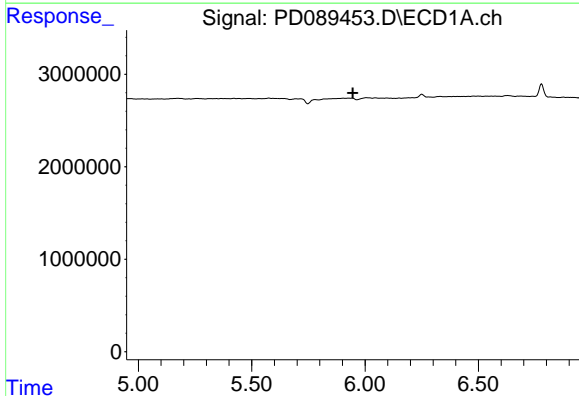
R.T.: 6.046 min
 Delta R.T.: -0.028 min
 Response: 84402
 Conc: 0.02 ng/ml

Instrument :
 ECD_D
 ClientSampleId :



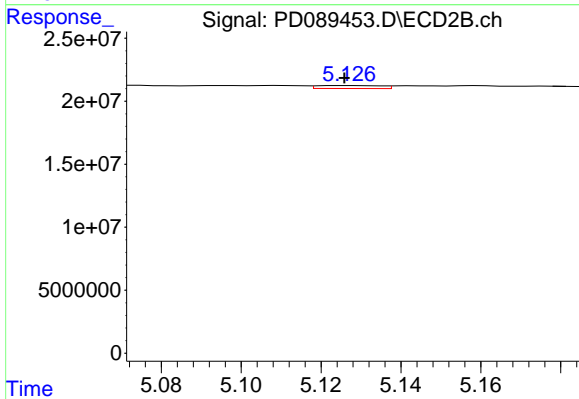
#9 Endosulfan I

R.T.: 0.000 min
 Exp R.T. : 5.247 min
 Response: 0
 Conc: N.D.



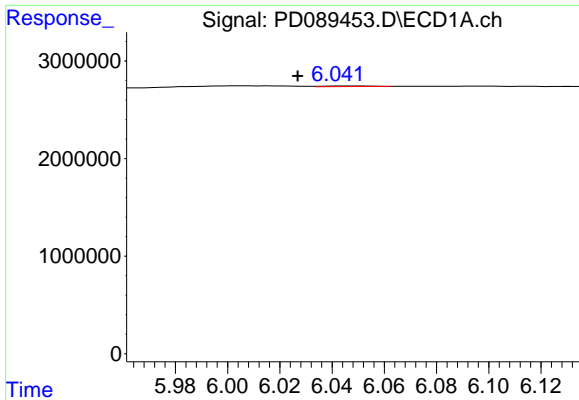
#10 gamma-Chlordane

R.T.: 0.000 min
 Exp R.T. : 5.946 min
 Response: 0
 Conc: N.D.



#10 gamma-Chlordane

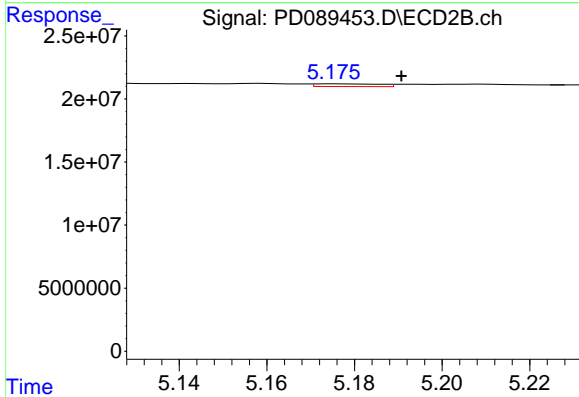
R.T.: 5.127 min
 Delta R.T.: 0.000 min
 Response: 2583447
 Conc: 0.11 ng/ml



#11 alpha-Chlordane

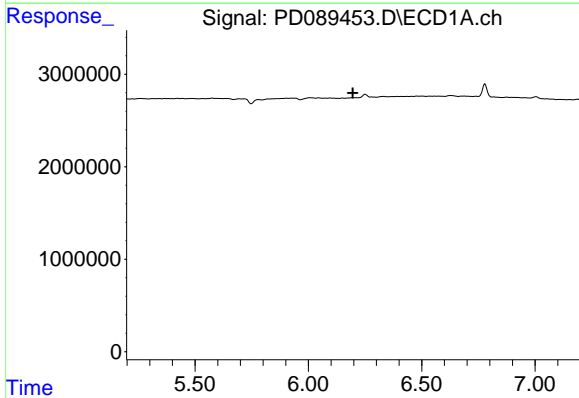
R.T.: 6.046 min
 Delta R.T.: 0.019 min
 Response: 84402
 Conc: 0.02 ng/ml

Instrument :
 ECD_D
 ClientSampleId :



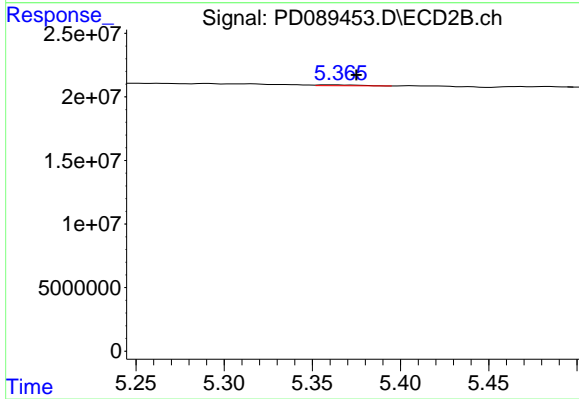
#11 alpha-Chlordane

R.T.: 5.176 min
 Delta R.T.: -0.015 min
 Response: 2225163
 Conc: 0.10 ng/ml



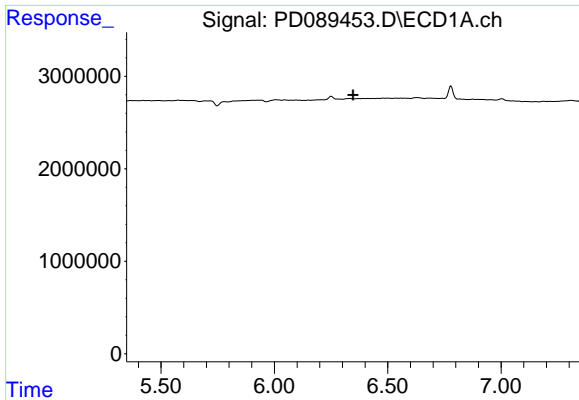
#12 4,4'-DDE

R.T.: 0.000 min
 Exp R.T. : 6.195 min
 Response: 0
 Conc: N.D.



#12 4,4'-DDE

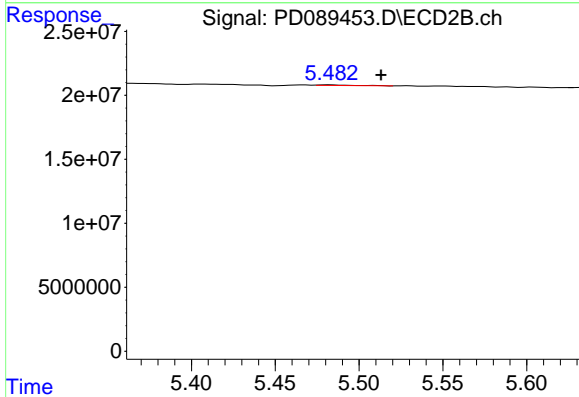
R.T.: 5.359 min
 Delta R.T.: -0.016 min
 Response: 1163837
 Conc: 0.05 ng/ml



#13 Dieldrin

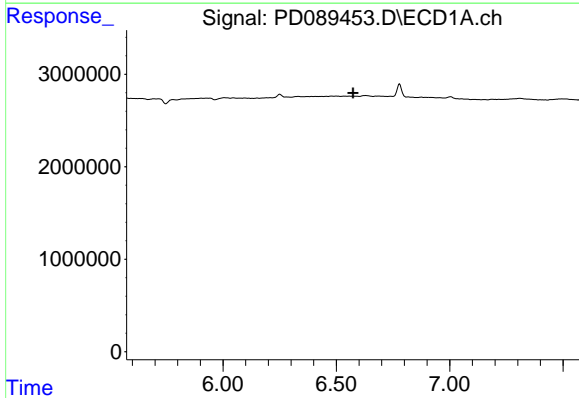
R.T.: 0.000 min
 Exp R.T.: 6.347 min
 Response: 0
 Conc: N.D.

Instrument :
 ECD_D
 ClientSampleId :



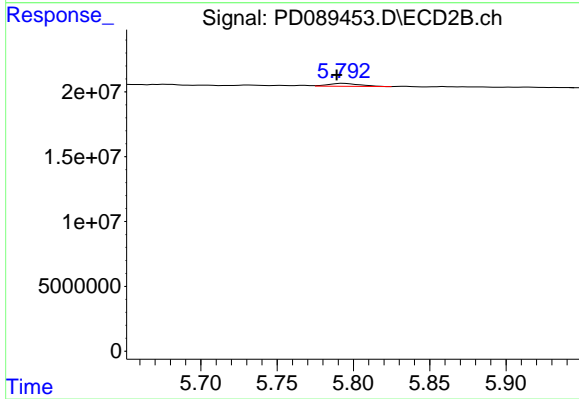
#13 Dieldrin

R.T.: 5.483 min
 Delta R.T.: -0.030 min
 Response: 745325
 Conc: 0.03 ng/ml



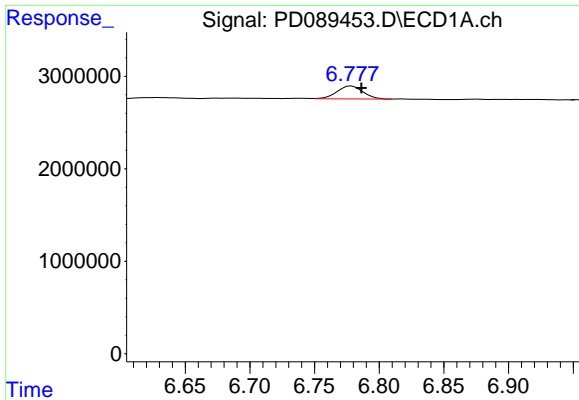
#14 Endrin

R.T.: 0.000 min
 Exp R.T.: 6.574 min
 Response: 0
 Conc: N.D.



#14 Endrin

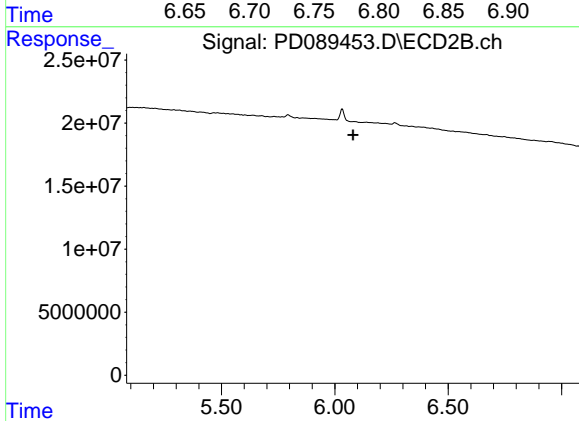
R.T.: 5.793 min
 Delta R.T.: 0.004 min
 Response: 3328033
 Conc: 0.15 ng/ml



#15 Endosulfan II

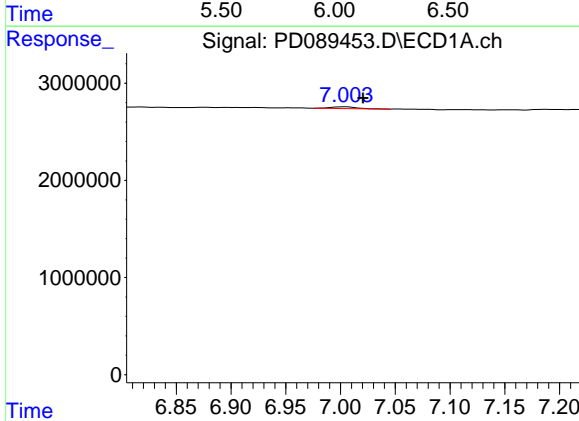
R.T.: 6.779 min
 Delta R.T.: -0.008 min
 Response: 1925849
 Conc: 0.48 ng/ml

Instrument :
 ECD_D
 ClientSampleId :



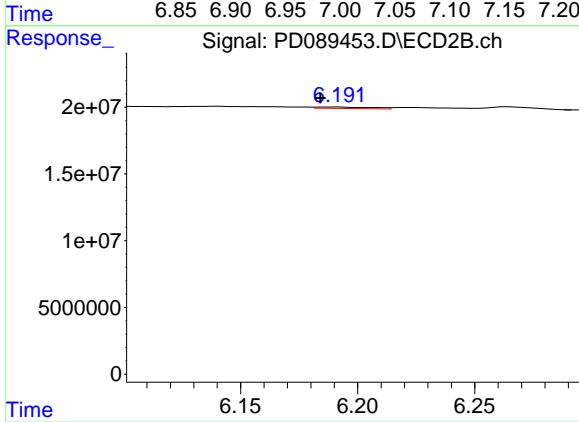
#15 Endosulfan II

R.T.: 0.000 min
 Exp R.T. : 6.081 min
 Response: 0
 Conc: N.D.



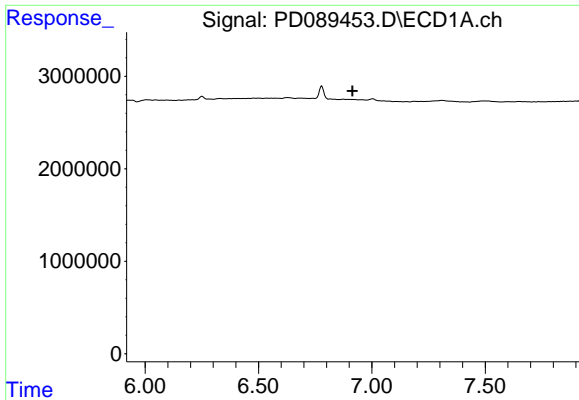
#17 4,4'-DDT

R.T.: 7.004 min
 Delta R.T.: -0.016 min
 Response: 291650
 Conc: 0.08 ng/ml



#17 4,4'-DDT

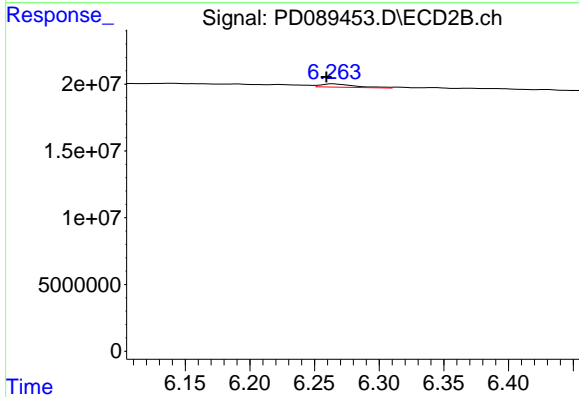
R.T.: 6.192 min
 Delta R.T.: 0.007 min
 Response: 1839902
 Conc: 0.09 ng/ml



#18 Endrin aldehyde

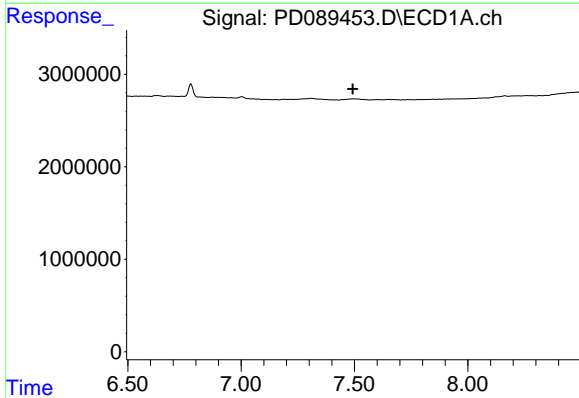
R.T.: 0.000 min
 Exp R.T.: 6.915 min
 Response: 0
 Conc: N.D.

Instrument :
 ECD_D
 ClientSampleId :



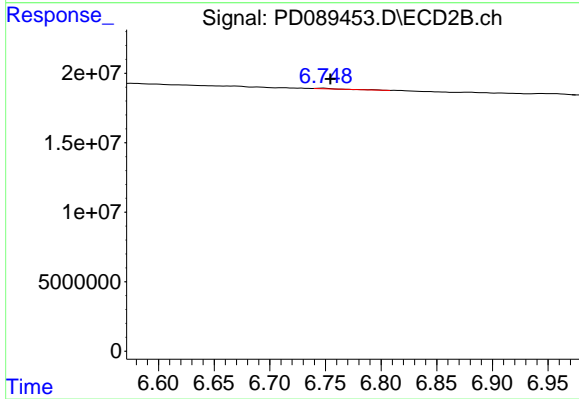
#18 Endrin aldehyde

R.T.: 6.265 min
 Delta R.T.: 0.006 min
 Response: 4657365
 Conc: 0.30 ng/ml



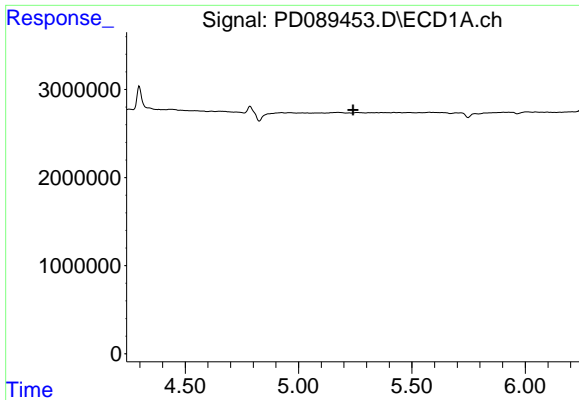
#20 Methoxychlor

R.T.: 0.000 min
 Exp R.T.: 7.493 min
 Response: 0
 Conc: N.D.



#20 Methoxychlor

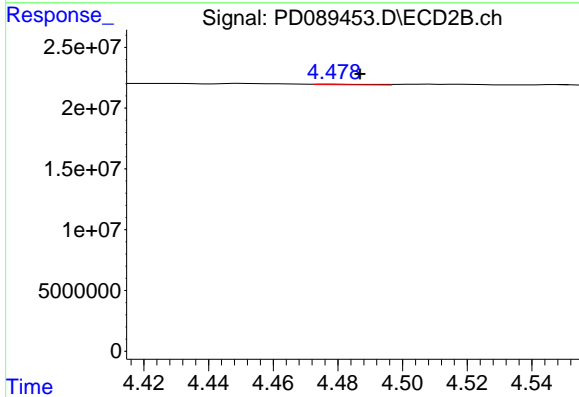
R.T.: 6.749 min
 Delta R.T.: -0.006 min
 Response: 672845
 Conc: 0.06 ng/ml



#24 Chlordane-2

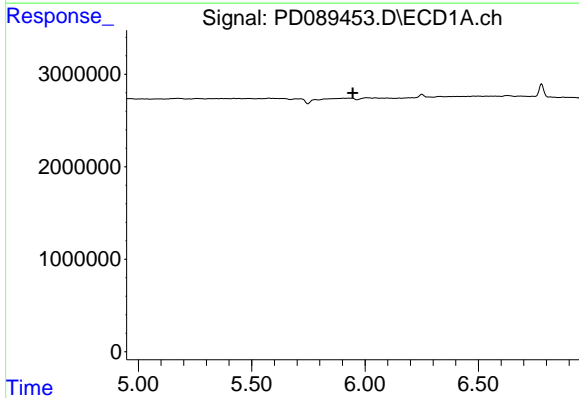
R.T.: 0.000 min
 Exp R.T.: 5.241 min
 Response: 0
 Conc: N.D.

Instrument :
 ECD_D
 ClientSampleId :



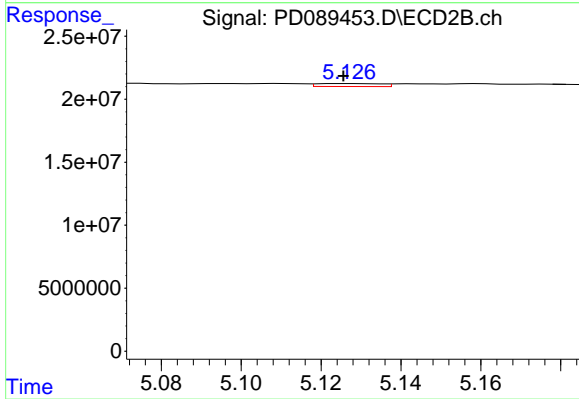
#24 Chlordane-2

R.T.: 4.478 min
 Delta R.T.: -0.009 min
 Response: 680465
 Conc: 0.72 ng/ml



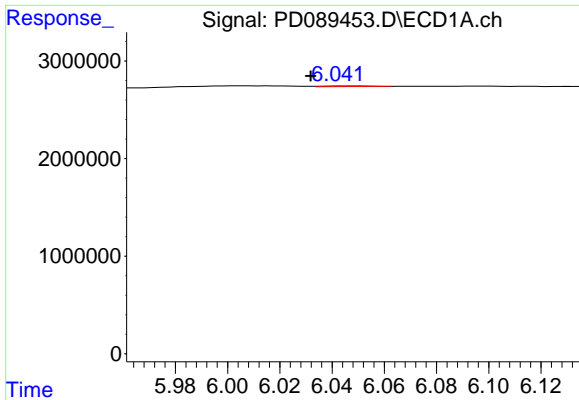
#25 Chlordane-3

R.T.: 0.000 min
 Exp R.T.: 5.946 min
 Response: 0
 Conc: N.D.



#25 Chlordane-3

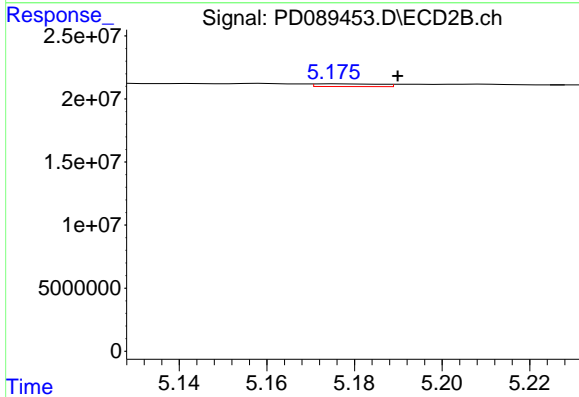
R.T.: 5.127 min
 Delta R.T.: 0.001 min
 Response: 2583447
 Conc: 0.87 ng/ml



#26 Chlordane-4

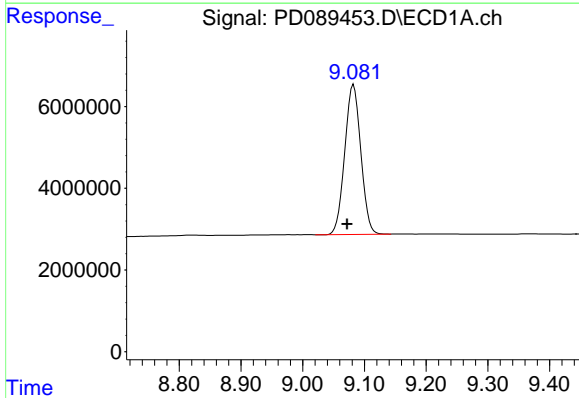
R.T.: 6.046 min
 Delta R.T.: 0.014 min
 Response: 84402
 Conc: 0.08 ng/ml

Instrument :
 ECD_D
 ClientSampleId :



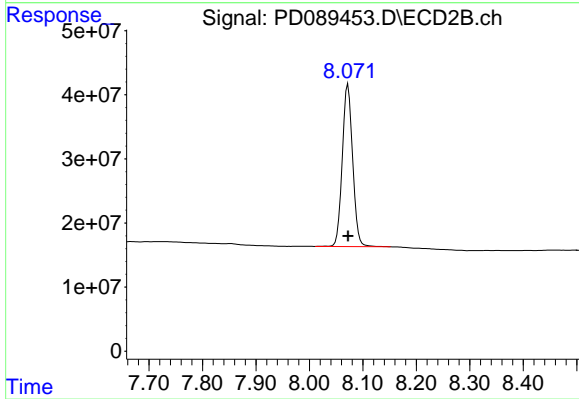
#26 Chlordane-4

R.T.: 5.176 min
 Delta R.T.: -0.014 min
 Response: 2225163
 Conc: 0.89 ng/ml



#28 Decachlorobiphenyl

R.T.: 9.082 min
 Delta R.T.: 0.010 min
 Response: 66353362
 Conc: 16.89 ng/ml



#28 Decachlorobiphenyl

R.T.: 8.072 min
 Delta R.T.: 0.000 min
 Response: 341412130
 Conc: 17.27 ng/ml