

Data Path : Z:\pestpcbsrv\HPCHEM1\ECD_D\Data\PD071125\
 Data File : PD089454.D
 Signal(s) : Signal #1: ECD1A.ch Signal #2: ECD2B.ch
 Acq On : 11 Jul 2025 13:15
 Operator : AR\AJ
 Sample : PB168810BS
 Misc :
 ALS Vial : 6 Sample Multiplier: 1

Instrument :
 ECD_D
 ClientSampleId :

Integration File signal 1: autoint1.e
 Integration File signal 2: autoint2.e
 Quant Time: Jul 11 22:50:38 2025
 Quant Method : Z:\pestpcbsrv\HPCHEM1\ECD_D\Method\PD061825.M
 Quant Title : GC Extractables
 QLast Update : Wed Jun 18 05:39:05 2025
 Response via : Initial Calibration
 Integrator: ChemStation

Volume Inj. : 1 µl
 Signal #1 Phase : ZB-MR2 Signal #2 Phase: ZB-MR2
 Signal #1 Info : 30M x 0.32mm x0.5 Signal #2 Info : 30M x 0.32mm x 0.25µm

	Compound	RT#1	RT#2	Resp#1	Resp#2	ng/ml	ng/ml

System Monitoring Compounds							
1)	SA Tetrachlo...	3.550	2.879	44833691	333.1E6	15.714	19.648 #
28)	SA Decachlor...	9.072	8.070	64927993	333.2E6	16.531	16.853
Target Compounds							
2)	A alpha-BHC	3.999	3.391	280.4E6	1381.9E6	48.109	51.568
3)	MA gamma-BHC...	4.330	3.727	268.1E6	1256.5E6	48.033	50.754
4)	MA Heptachlor	4.929	4.080	259.9E6	1233.3E6	47.672	49.256
5)	MB Aldrin	5.270	4.366	258.5E6	1254.6E6	48.648	51.808
6)	B beta-BHC	4.516	4.023	102.6E6	542.8E6	46.470	50.515
7)	B delta-BHC	4.764	4.260	262.5E6	1283.5E6	51.135	51.600
8)	Heptachlo...	5.690	4.870	230.7E6	1152.1E6	47.831	52.612
9)	A Endosulfan I	6.073	5.244	218.3E6	1093.0E6	48.438	52.439
10)	B gamma-Chl...	5.945	5.123	231.5E6	1234.8E6	48.340	51.615
11)	B alpha-Chl...	6.026	5.188	233.7E6	1173.7E6	48.298	51.260
12)	B 4,4'-DDE	6.195	5.372	211.5E6	1177.0E6	48.503	51.361
13)	MA Dieldrin	6.346	5.510	233.7E6	1191.3E6	48.718	51.332
14)	MA Endrin	6.574	5.787	179.3E6	996.7E6	43.450	45.903
15)	B Endosulfa...	6.786	6.077	193.6E6	1026.9E6	47.951	50.843
16)	A 4,4'-DDD	6.705	5.927	170.4E6	1010.2E6	49.654	52.811
17)	MA 4,4'-DDT	7.020	6.181	163.6E6	945.4E6	43.177	46.619
18)	B Endrin al...	6.914	6.256	144.2E6	768.1E6	47.076	50.164
19)	B Endosulfa...	7.149	6.480	177.2E6	984.2E6	46.190	50.161
20)	A Methoxychlor	7.492	6.752	80087416	458.1E6	39.635	42.544
21)	B Endrin ke...	7.630	6.989	189.8E6	1064.4E6	46.590	49.276
22)	Mirex	8.113	7.183	119.5E6	692.7E6	39.306	41.534
23)	Chlordane-1	0.000	3.905	0	428885	N.D.	0.460 #
24)	Chlordane-2	5.270f	4.503	258.5E6	9709064	1183.909	10.203 #
25)	Chlordane-3	5.945	5.123	231.5E6	1234.8E6	268.361	415.720 #
26)	Chlordane-4	6.026	5.188	233.7E6	1173.7E6	222.413	468.216 #
27)	Chlordane-5	0.000	6.077	0	1026.9E6	N.D.	907.388 #

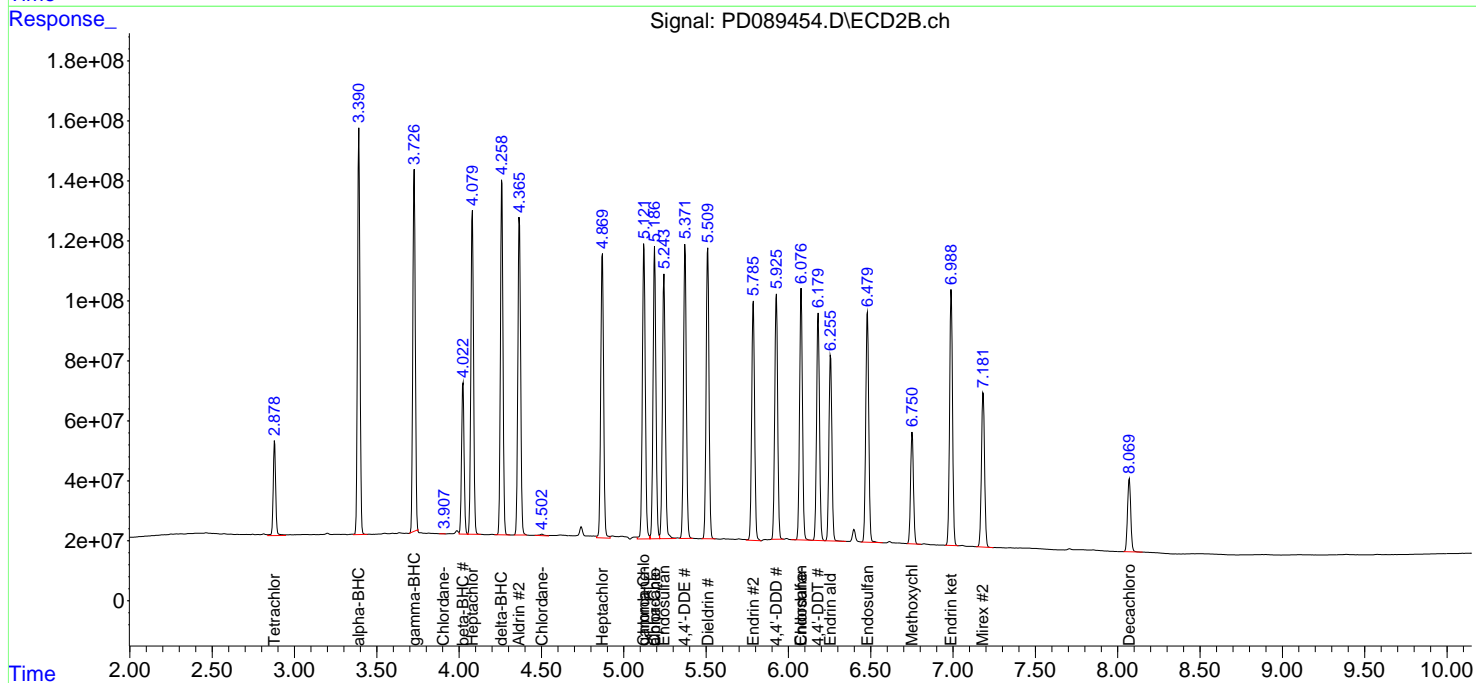
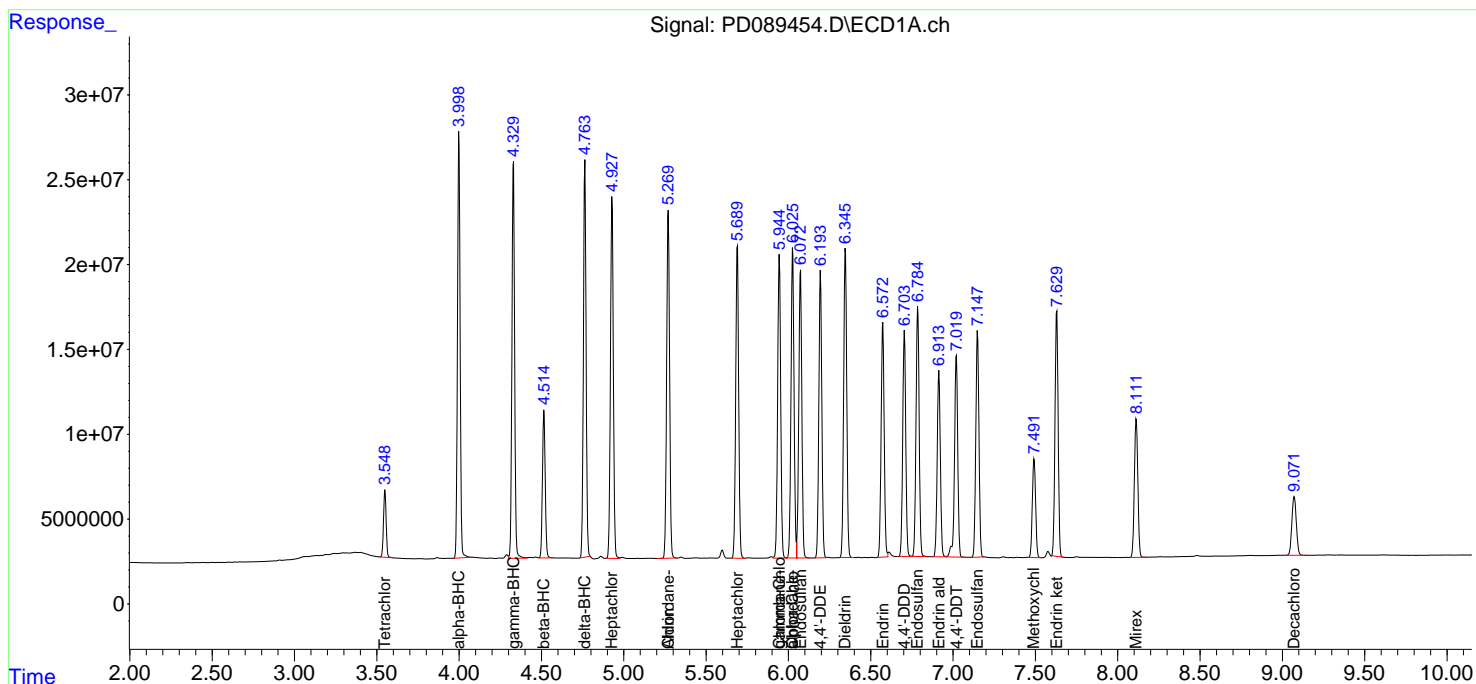
(f)=RT Delta > 1/2 Window (#)=Amounts differ by > 25% (m)=manual int.

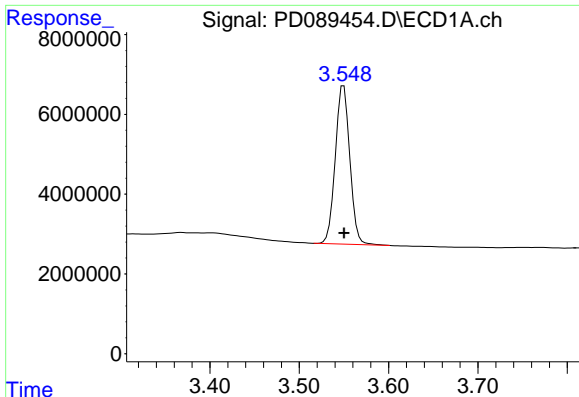
Data Path : Z:\pestpcbsrv\HPCHEM1\ECD_D\Data\PD071125\
 Data File : PD089454.D
 Signal(s) : Signal #1: ECD1A.ch Signal #2: ECD2B.ch
 Acq On : 11 Jul 2025 13:15
 Operator : AR\AJ
 Sample : PB168810BS
 Misc :
 ALS Vial : 6 Sample Multiplier: 1

Instrument :
 ECD_D
 ClientSampleId :

Integration File signal 1: autoint1.e
 Integration File signal 2: autoint2.e
 Quant Time: Jul 11 22:50:38 2025
 Quant Method : Z:\pestpcbsrv\HPCHEM1\ECD_D\Method\PD061825.M
 Quant Title : GC Extractables
 QLast Update : Wed Jun 18 05:39:05 2025
 Response via : Initial Calibration
 Integrator: ChemStation

Volume Inj. : 1 µl
 Signal #1 Phase : ZB-MR1 Signal #2 Phase: ZB-MR2
 Signal #1 Info : 30M x 0.32mm x0.5 Signal #2 Info : 30M x 0.32mm x 0.25µm

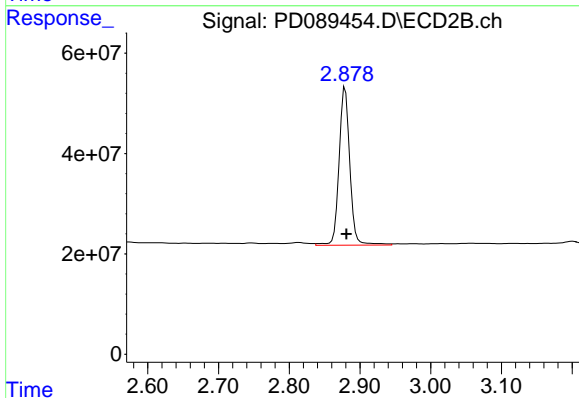




#1 Tetrachloro-m-xylene

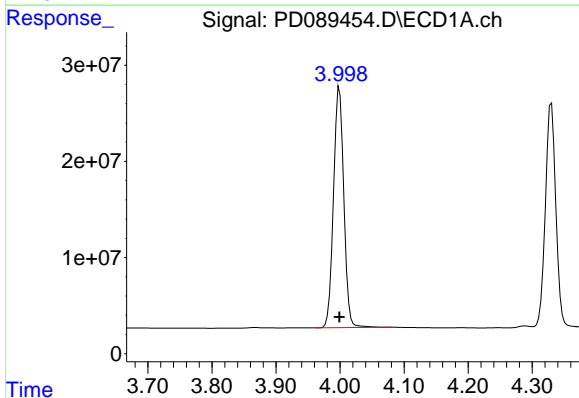
R.T.: 3.550 min
 Delta R.T.: 0.000 min
 Response: 44833691
 Conc: 15.71 ng/ml

Instrument :
 ECD_D
 ClientSampleId :



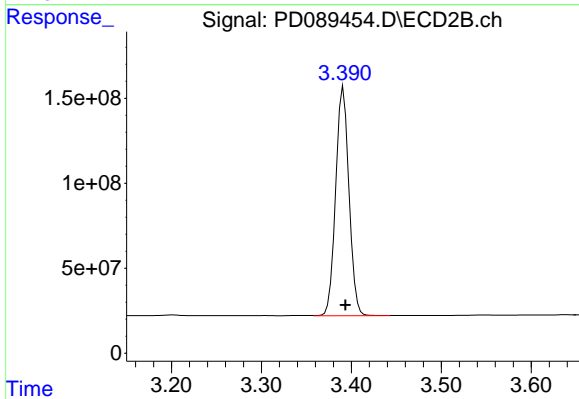
#1 Tetrachloro-m-xylene

R.T.: 2.879 min
 Delta R.T.: -0.002 min
 Response: 333099176
 Conc: 19.65 ng/ml



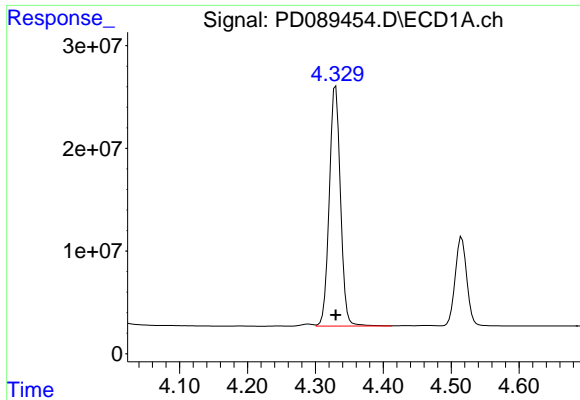
#2 alpha-BHC

R.T.: 3.999 min
 Delta R.T.: 0.000 min
 Response: 280427987
 Conc: 48.11 ng/ml



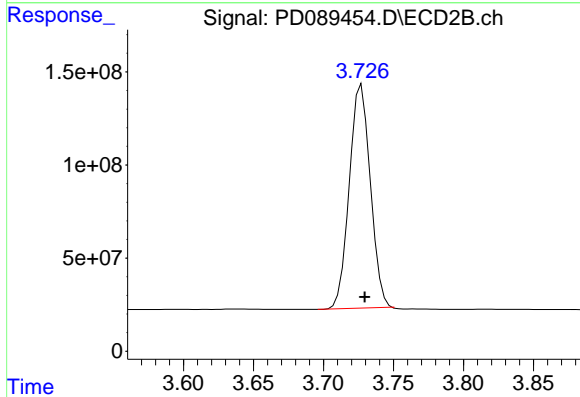
#2 alpha-BHC

R.T.: 3.391 min
 Delta R.T.: -0.002 min
 Response: 1381865474
 Conc: 51.57 ng/ml

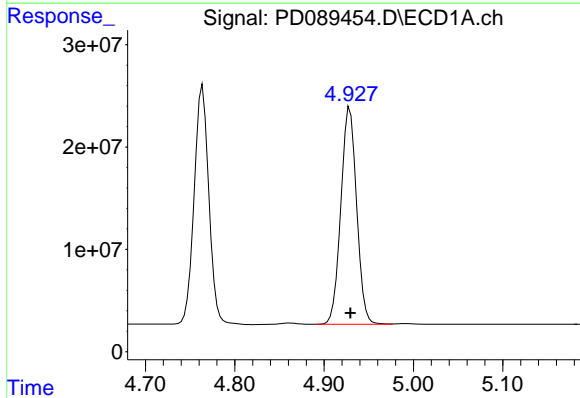


#3 gamma-BHC (Lindane)
 R.T.: 4.330 min
 Delta R.T.: 0.000 min
 Response: 268104441
 Conc: 48.03 ng/ml

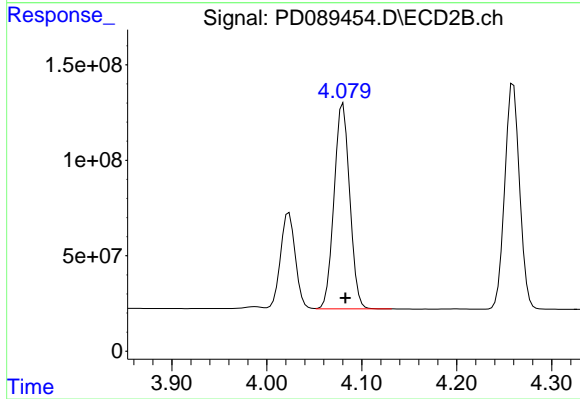
Instrument :
 ECD_D
 ClientSampleId :



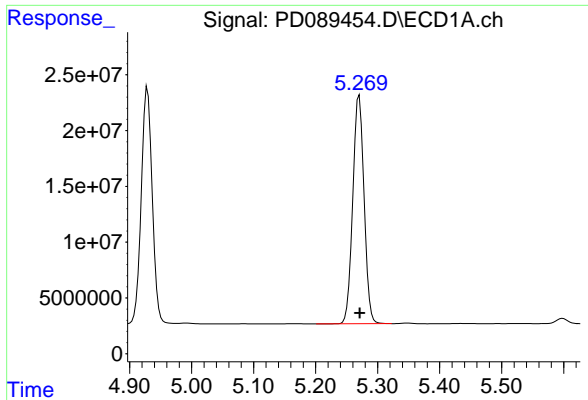
#3 gamma-BHC (Lindane)
 R.T.: 3.727 min
 Delta R.T.: -0.002 min
 Response: 1256500917
 Conc: 50.75 ng/ml



#4 Heptachlor
 R.T.: 4.929 min
 Delta R.T.: 0.000 min
 Response: 259905201
 Conc: 47.67 ng/ml



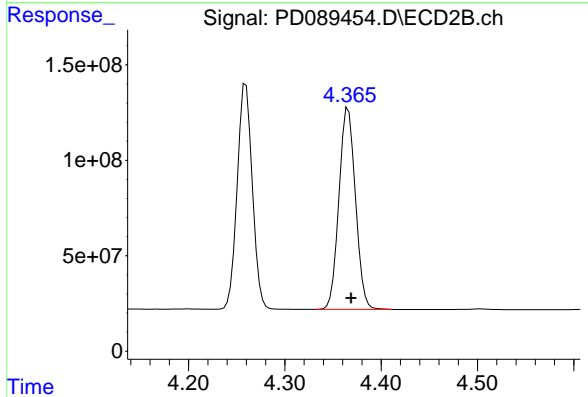
#4 Heptachlor
 R.T.: 4.080 min
 Delta R.T.: -0.002 min
 Response: 1233287081
 Conc: 49.26 ng/ml



#5 Aldrin

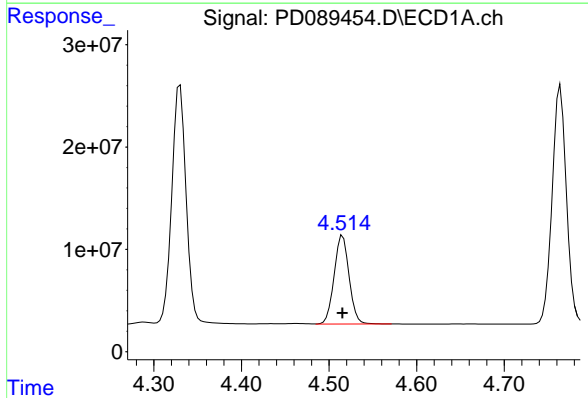
R.T.: 5.270 min
 Delta R.T.: 0.000 min
 Response: 258463504
 Conc: 48.65 ng/ml

Instrument :
 ECD_D
 ClientSampleId :



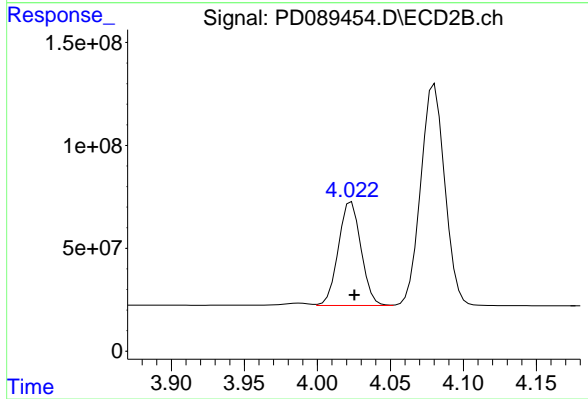
#5 Aldrin

R.T.: 4.366 min
 Delta R.T.: -0.003 min
 Response: 1254644701
 Conc: 51.81 ng/ml



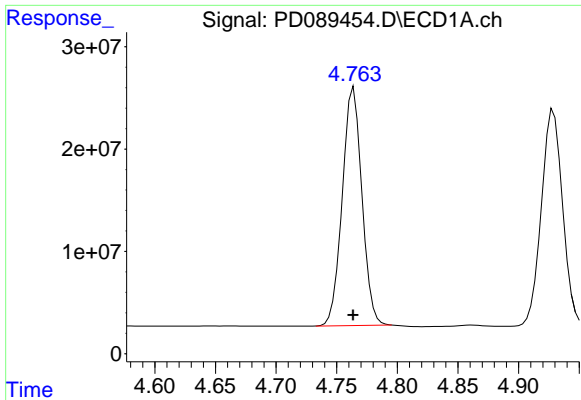
#6 beta-BHC

R.T.: 4.516 min
 Delta R.T.: 0.000 min
 Response: 102565619
 Conc: 46.47 ng/ml



#6 beta-BHC

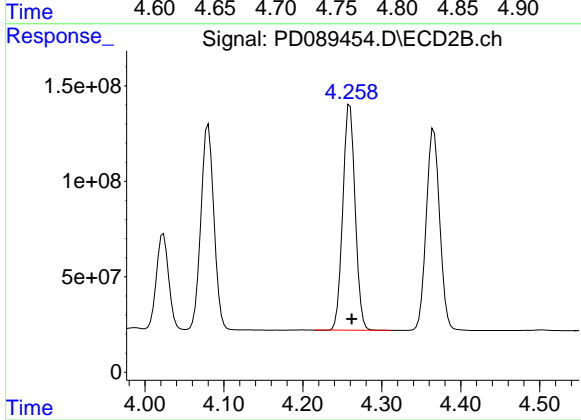
R.T.: 4.023 min
 Delta R.T.: -0.002 min
 Response: 542848932
 Conc: 50.52 ng/ml



#7 delta-BHC

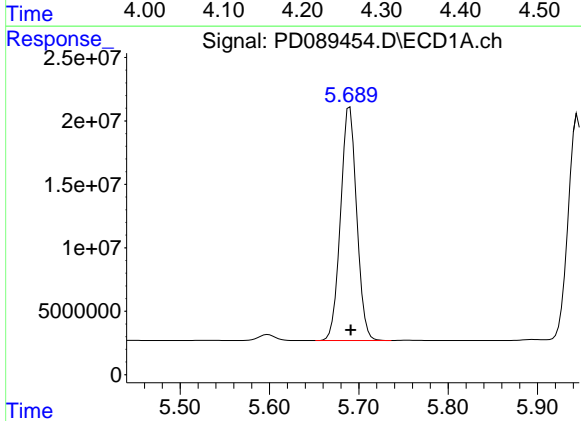
R.T.: 4.764 min
Delta R.T.: 0.000 min
Response: 262472880
Conc: 51.14 ng/ml

Instrument :
ECD_D
ClientSampleId :



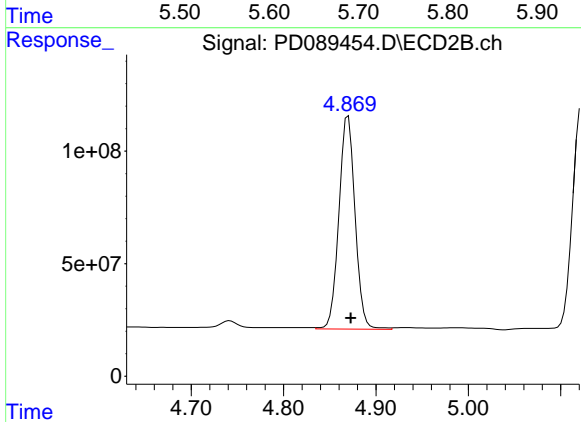
#7 delta-BHC

R.T.: 4.260 min
Delta R.T.: -0.002 min
Response: 1283470551
Conc: 51.60 ng/ml



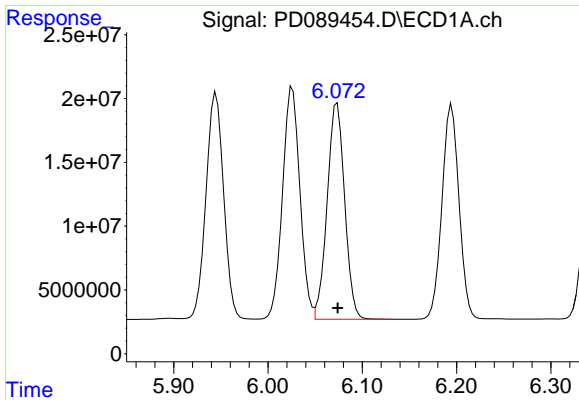
#8 Heptachlor epoxide

R.T.: 5.690 min
Delta R.T.: 0.000 min
Response: 230733200
Conc: 47.83 ng/ml



#8 Heptachlor epoxide

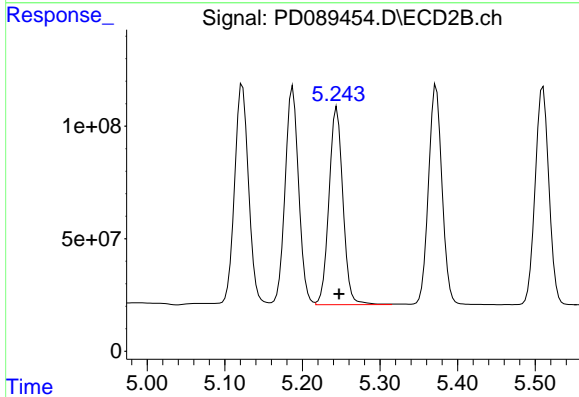
R.T.: 4.870 min
Delta R.T.: -0.003 min
Response: 1152093054
Conc: 52.61 ng/ml



#9 Endosulfan I

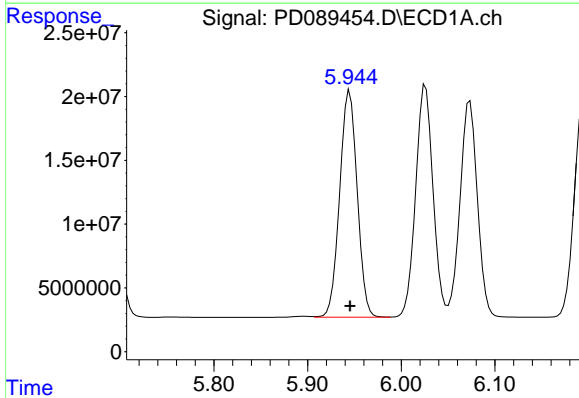
R.T.: 6.073 min
 Delta R.T.: 0.000 min
 Response: 218332483
 Conc: 48.44 ng/ml

Instrument :
 ECD_D
 ClientSampleId :



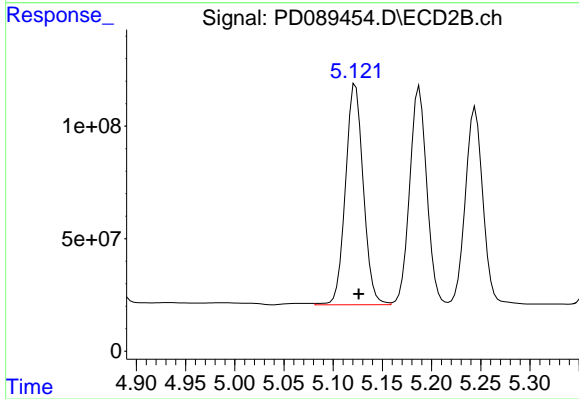
#9 Endosulfan I

R.T.: 5.244 min
 Delta R.T.: -0.003 min
 Response: 1092966471
 Conc: 52.44 ng/ml



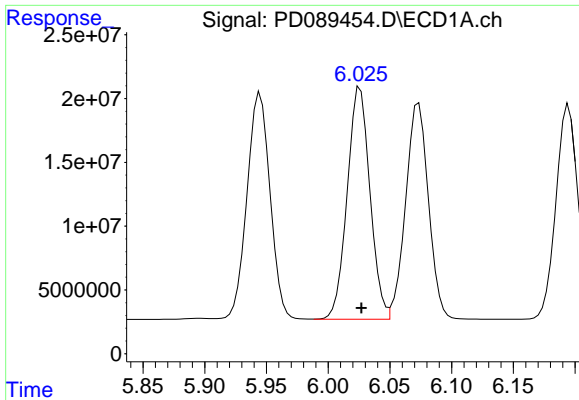
#10 gamma-Chlordane

R.T.: 5.945 min
 Delta R.T.: 0.000 min
 Response: 231456891
 Conc: 48.34 ng/ml



#10 gamma-Chlordane

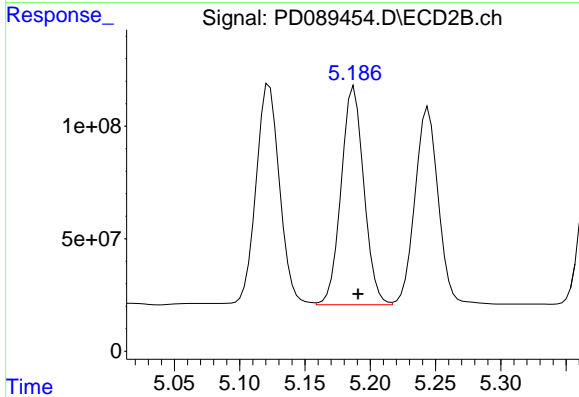
R.T.: 5.123 min
 Delta R.T.: -0.003 min
 Response: 1234770155
 Conc: 51.61 ng/ml



#11 alpha-Chlordane

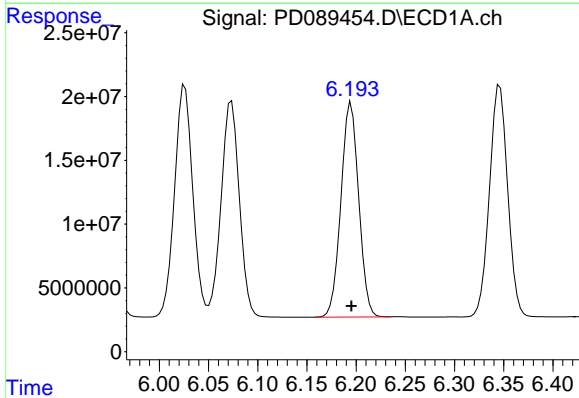
R.T.: 6.026 min
 Delta R.T.: 0.000 min
 Response: 233690730
 Conc: 48.30 ng/ml

Instrument :
 ECD_D
 ClientSampleId :



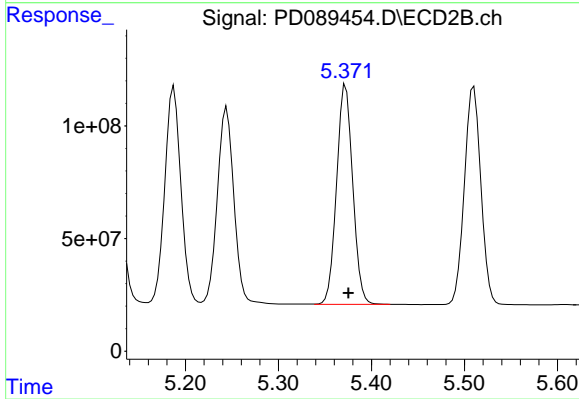
#11 alpha-Chlordane

R.T.: 5.188 min
 Delta R.T.: -0.003 min
 Response: 1173685466
 Conc: 51.26 ng/ml



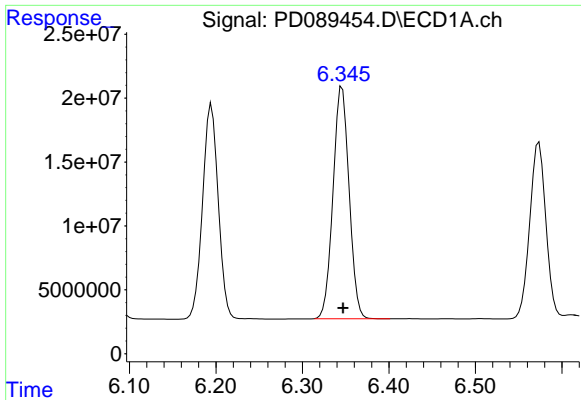
#12 4,4'-DDE

R.T.: 6.195 min
 Delta R.T.: 0.000 min
 Response: 211524952
 Conc: 48.50 ng/ml



#12 4,4'-DDE

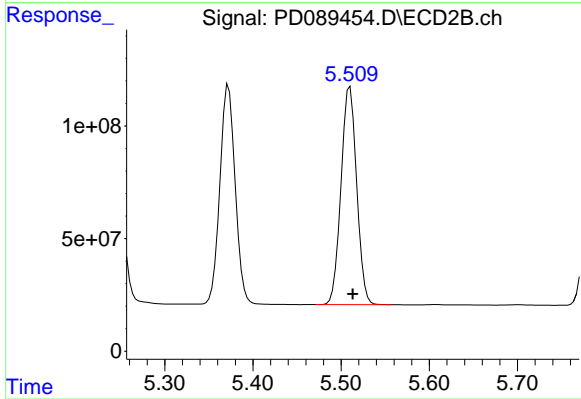
R.T.: 5.372 min
 Delta R.T.: -0.003 min
 Response: 1177000446
 Conc: 51.36 ng/ml



#13 Dieldrin

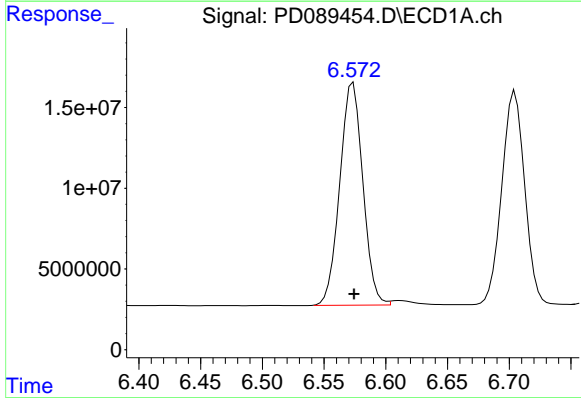
R.T.: 6.346 min
 Delta R.T.: 0.000 min
 Response: 233721384
 Conc: 48.72 ng/ml

Instrument :
 ECD_D
 ClientSampleId :



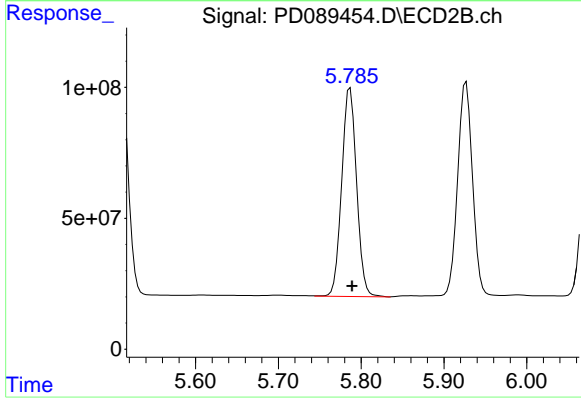
#13 Dieldrin

R.T.: 5.510 min
 Delta R.T.: -0.003 min
 Response: 1191327989
 Conc: 51.33 ng/ml



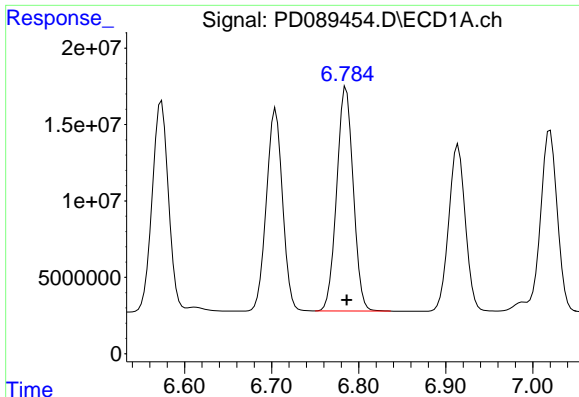
#14 Endrin

R.T.: 6.574 min
 Delta R.T.: 0.000 min
 Response: 179258295
 Conc: 43.45 ng/ml



#14 Endrin

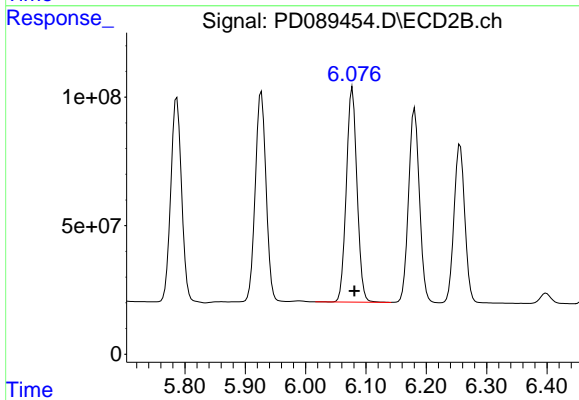
R.T.: 5.787 min
 Delta R.T.: -0.002 min
 Response: 996742245
 Conc: 45.90 ng/ml



#15 Endosulfan II

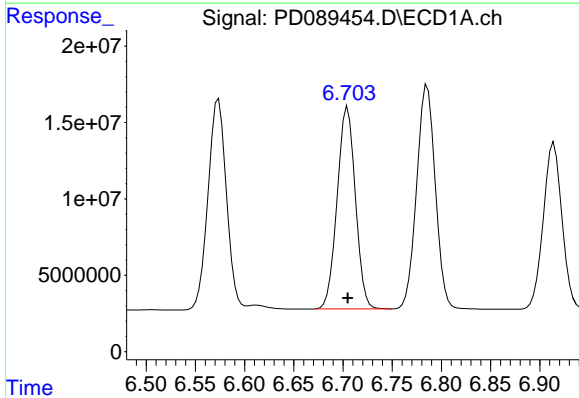
R.T.: 6.786 min
 Delta R.T.: 0.000 min
 Response: 193558747
 Conc: 47.95 ng/ml

Instrument :
 ECD_D
 ClientSampleId :



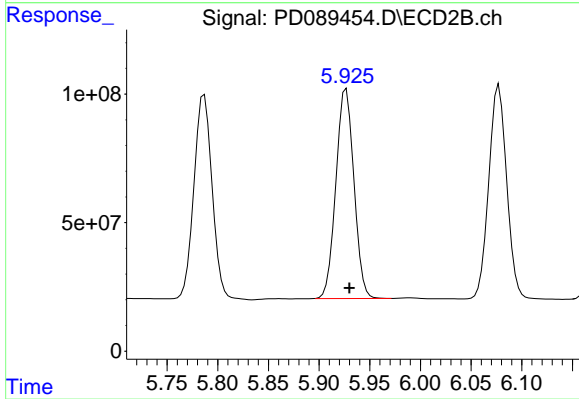
#15 Endosulfan II

R.T.: 6.077 min
 Delta R.T.: -0.003 min
 Response: 1026855151
 Conc: 50.84 ng/ml



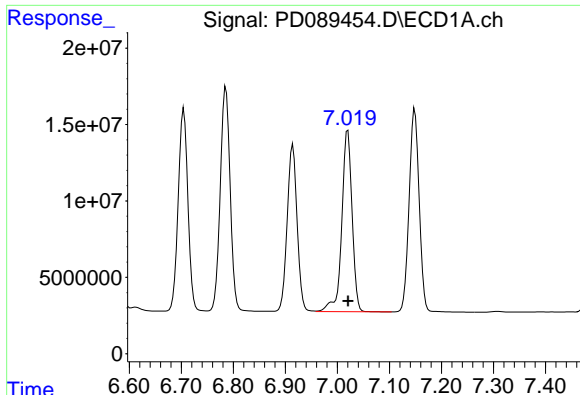
#16 4,4'-DDD

R.T.: 6.705 min
 Delta R.T.: 0.000 min
 Response: 170413719
 Conc: 49.65 ng/ml



#16 4,4'-DDD

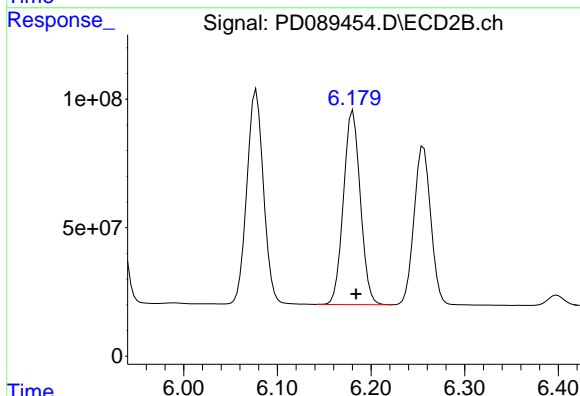
R.T.: 5.927 min
 Delta R.T.: -0.003 min
 Response: 1010247197
 Conc: 52.81 ng/ml



#17 4,4'-DDT

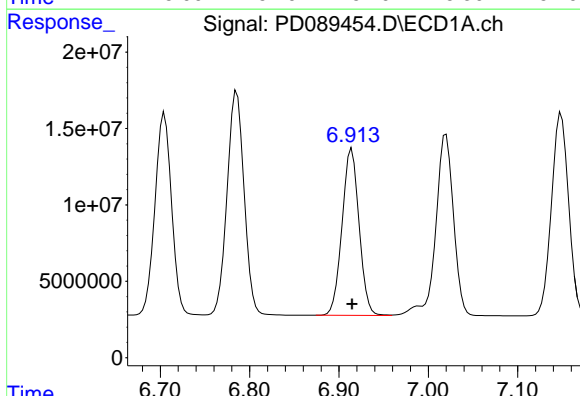
R.T.: 7.020 min
 Delta R.T.: 0.000 min
 Response: 163561647
 Conc: 43.18 ng/ml

Instrument :
 ECD_D
 ClientSampleId :



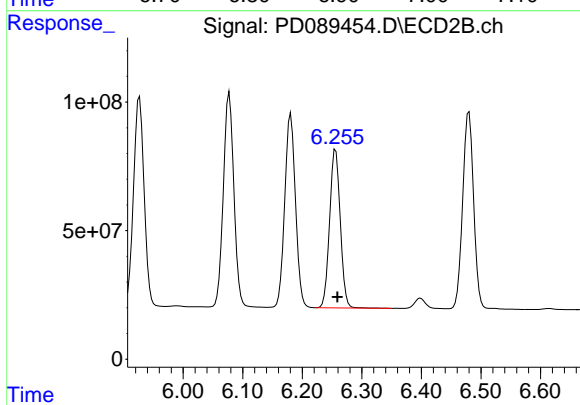
#17 4,4'-DDT

R.T.: 6.181 min
 Delta R.T.: -0.003 min
 Response: 945408128
 Conc: 46.62 ng/ml



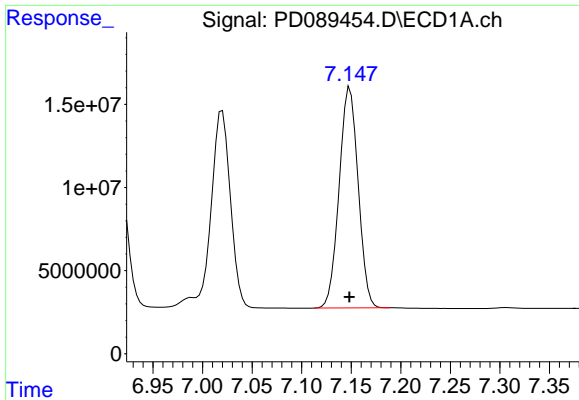
#18 Endrin aldehyde

R.T.: 6.914 min
 Delta R.T.: 0.000 min
 Response: 144237370
 Conc: 47.08 ng/ml



#18 Endrin aldehyde

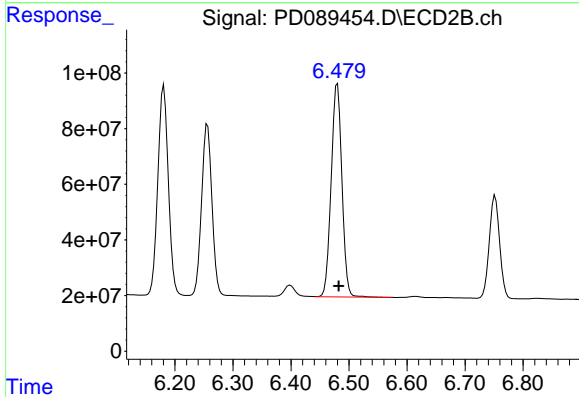
R.T.: 6.256 min
 Delta R.T.: -0.003 min
 Response: 768074266
 Conc: 50.16 ng/ml



#19 Endosulfan Sulfate

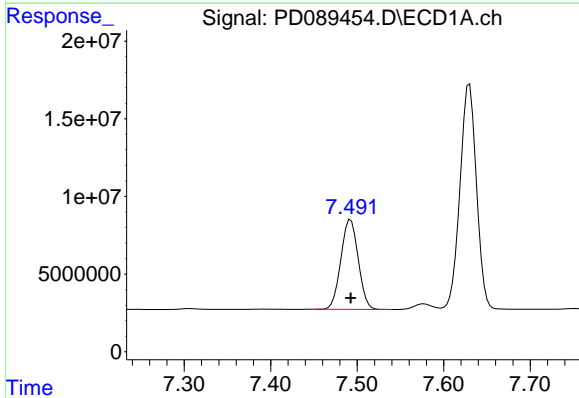
R.T.: 7.149 min
 Delta R.T.: 0.000 min
 Response: 177240144
 Conc: 46.19 ng/ml

Instrument :
 ECD_D
 ClientSampleId :



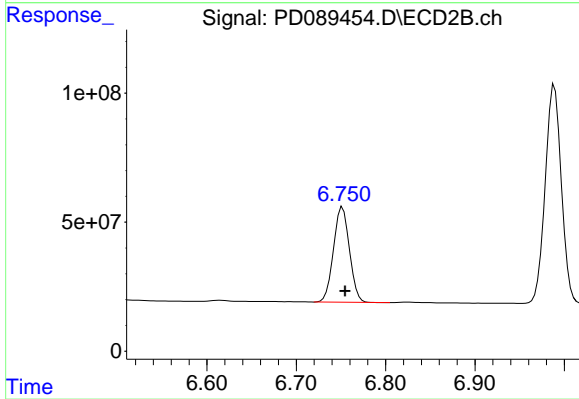
#19 Endosulfan Sulfate

R.T.: 6.480 min
 Delta R.T.: -0.003 min
 Response: 984208735
 Conc: 50.16 ng/ml



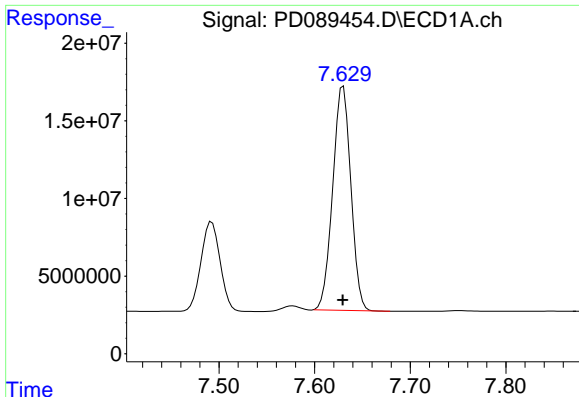
#20 Methoxychlor

R.T.: 7.492 min
 Delta R.T.: 0.000 min
 Response: 80087416
 Conc: 39.63 ng/ml



#20 Methoxychlor

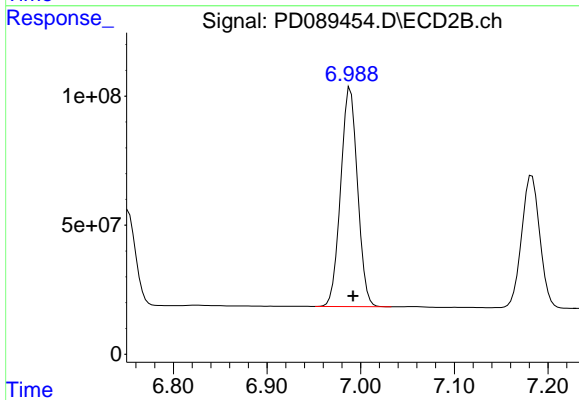
R.T.: 6.752 min
 Delta R.T.: -0.003 min
 Response: 458112948
 Conc: 42.54 ng/ml



#21 Endrin ketone

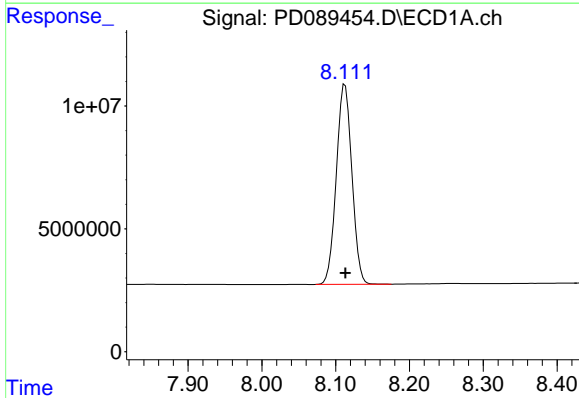
R.T.: 7.630 min
 Delta R.T.: 0.000 min
 Response: 189764940
 Conc: 46.59 ng/ml

Instrument :
 ECD_D
 ClientSampleId :



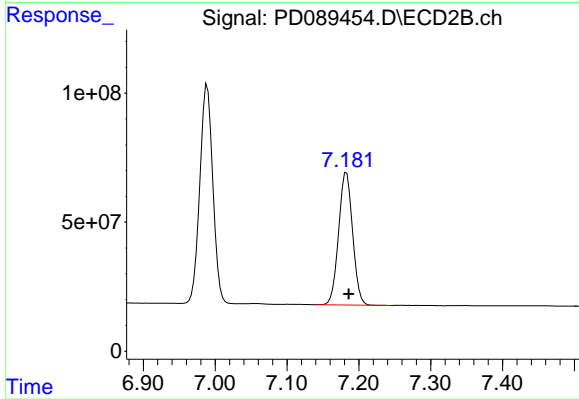
#21 Endrin ketone

R.T.: 6.989 min
 Delta R.T.: -0.003 min
 Response: 1064448980
 Conc: 49.28 ng/ml



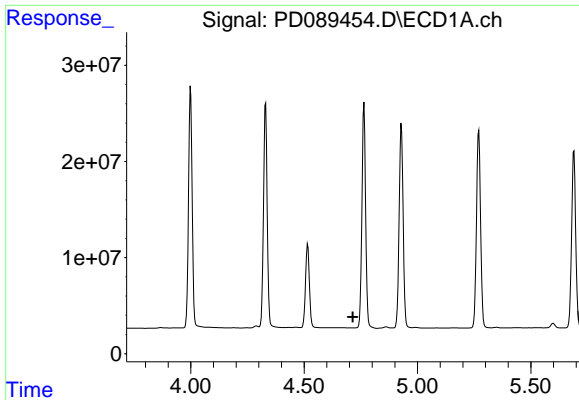
#22 Mirex

R.T.: 8.113 min
 Delta R.T.: 0.000 min
 Response: 119495380
 Conc: 39.31 ng/ml



#22 Mirex

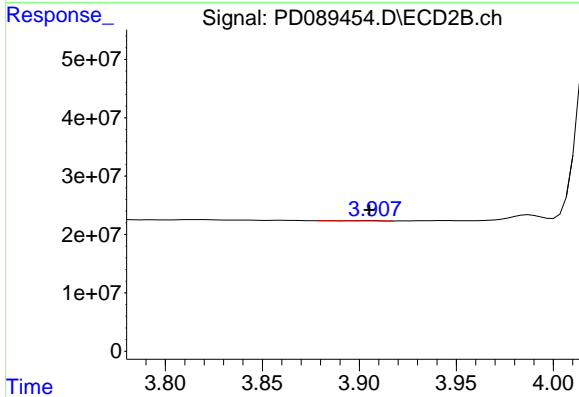
R.T.: 7.183 min
 Delta R.T.: -0.003 min
 Response: 692715290
 Conc: 41.53 ng/ml



#23 Chlordane-1

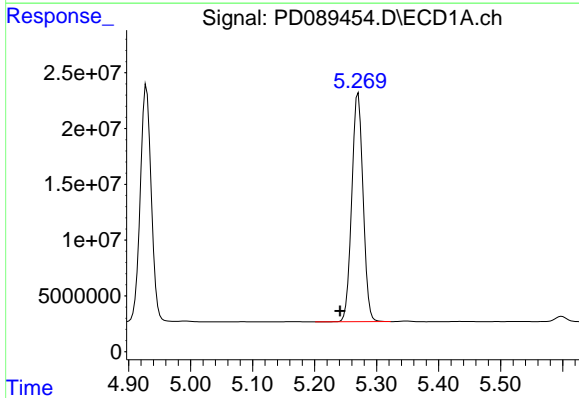
R.T.: 0.000 min
 Exp R.T.: 4.715 min
 Response: 0
 Conc: N.D.

Instrument :
 ECD_D
 ClientSampleId :



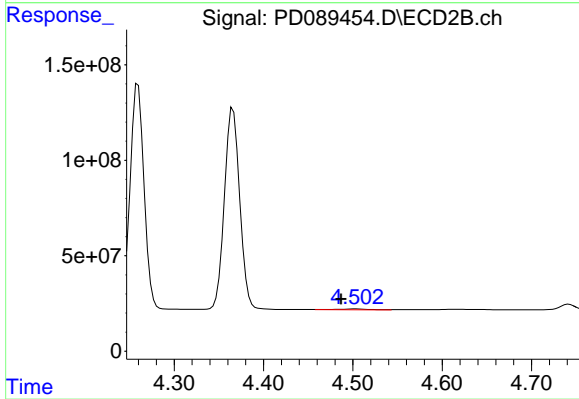
#23 Chlordane-1

R.T.: 3.905 min
 Delta R.T.: 0.000 min
 Response: 428885
 Conc: 0.46 ng/ml



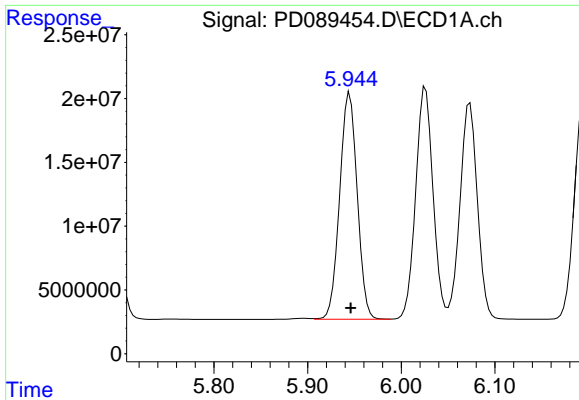
#24 Chlordane-2

R.T.: 5.270 min
 Delta R.T.: 0.029 min
 Response: 258463504
 Conc: 1183.91 ng/ml



#24 Chlordane-2

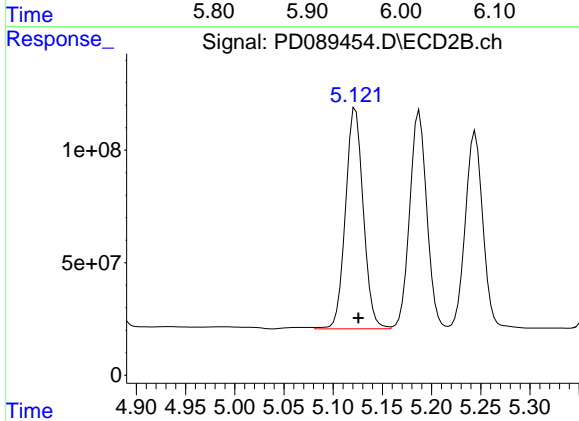
R.T.: 4.503 min
 Delta R.T.: 0.016 min
 Response: 9709064
 Conc: 10.20 ng/ml



#25 Chlordane-3

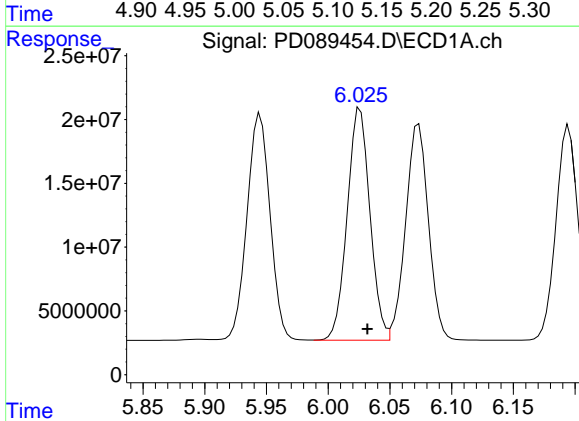
R.T.: 5.945 min
 Delta R.T.: 0.000 min
 Response: 231456891
 Conc: 268.36 ng/ml

Instrument :
 ECD_D
 ClientSampleId :



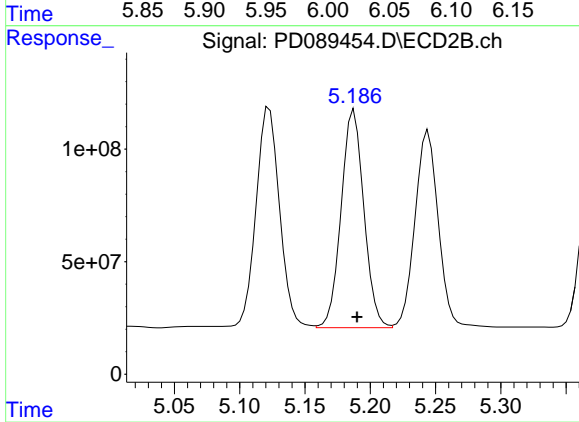
#25 Chlordane-3

R.T.: 5.123 min
 Delta R.T.: -0.003 min
 Response: 1234770155
 Conc: 415.72 ng/ml



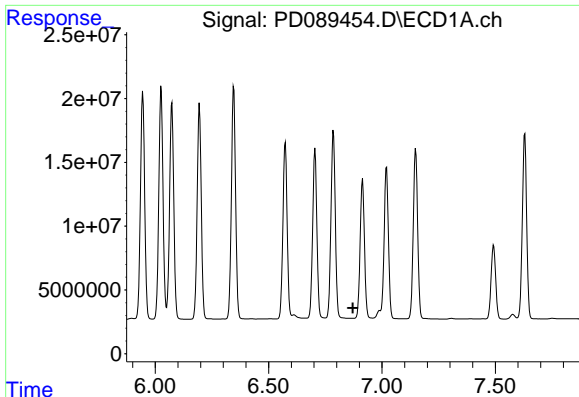
#26 Chlordane-4

R.T.: 6.026 min
 Delta R.T.: -0.006 min
 Response: 233690730
 Conc: 222.41 ng/ml



#26 Chlordane-4

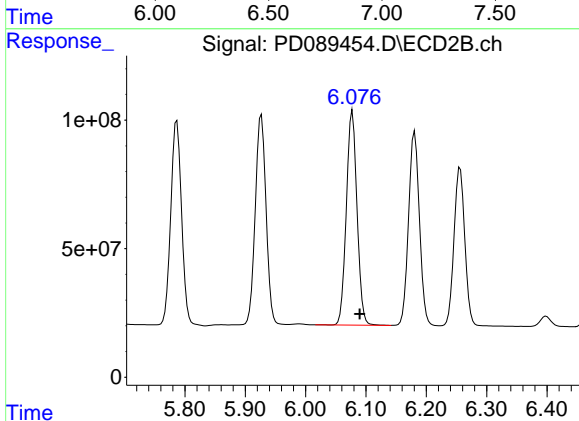
R.T.: 5.188 min
 Delta R.T.: -0.002 min
 Response: 1173685466
 Conc: 468.22 ng/ml



#27 Chlordane-5

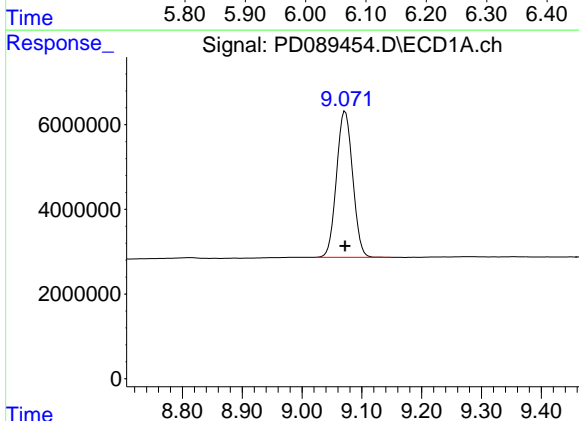
R.T.: 0.000 min
 Exp R.T.: 6.871 min
 Response: 0
 Conc: N.D.

Instrument :
 ECD_D
 ClientSampleId :



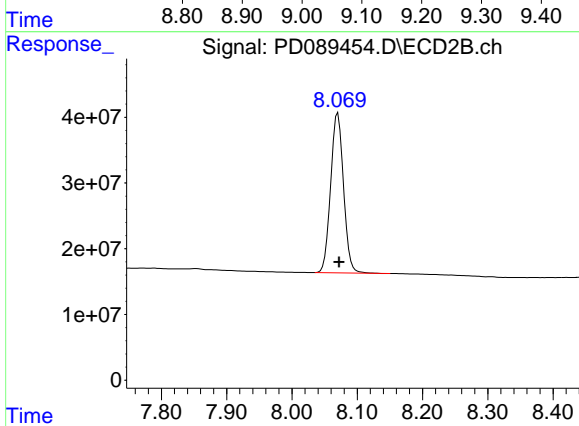
#27 Chlordane-5

R.T.: 6.077 min
 Delta R.T.: -0.012 min
 Response: 1026855151
 Conc: 907.39 ng/ml



#28 Decachlorobiphenyl

R.T.: 9.072 min
 Delta R.T.: 0.000 min
 Response: 64927993
 Conc: 16.53 ng/ml



#28 Decachlorobiphenyl

R.T.: 8.070 min
 Delta R.T.: -0.002 min
 Response: 333188072
 Conc: 16.85 ng/ml