

Data Path : Z:\pestpcbsrv\HPCHEM1\ECD\_D\Data\PD071125\  
 Data File : PD089457.D  
 Signal(s) : Signal #1: ECD1A.ch Signal #2: ECD2B.ch  
 Acq On : 11 Jul 2025 13:56  
 Operator : AR\AJ  
 Sample : Q25560-01MS  
 Misc :  
 ALS Vial : 9 Sample Multiplier: 1

Instrument :  
 ECD\_D  
 ClientSampleId :

Integration File signal 1: autoint1.e  
 Integration File signal 2: autoint2.e  
 Quant Time: Jul 11 22:51:38 2025  
 Quant Method : Z:\pestpcbsrv\HPCHEM1\ECD\_D\Method\PD061825.M  
 Quant Title : GC Extractables  
 QLast Update : Wed Jun 18 05:39:05 2025  
 Response via : Initial Calibration  
 Integrator: ChemStation

Volume Inj. : 1 µl  
 Signal #1 Phase : ZB-MR2 Signal #2 Phase: ZB-MR2  
 Signal #1 Info : 30M x 0.32mm x0.5 Signal #2 Info : 30M x 0.32mm x 0.25µm

	Compound	RT#1	RT#2	Resp#1	Resp#2	ng/ml	ng/ml
-----							
System Monitoring Compounds							
1)	SA Tetrachlo...	3.550	2.880	33659321	737.0E6	11.797	43.474 #
28)	SA Decachlor...	9.071	8.069	45006386	323.3E6	11.459	16.354 #
Target Compounds							
2)	A alpha-BHC	3.999	3.392	242.2E6	1293.7E6	41.557	48.276
3)	MA gamma-BHC...	4.330	3.728	284.5E6	1033.6E6	50.971	41.750
4)	MA Heptachlor	4.929	4.081	239.7E6	1129.0E6	43.961	45.092
5)	MB Aldrin	5.270	4.367	246.5E6	1065.7E6	46.401	44.004
6)	B beta-BHC	4.516	4.025	65977385	742.5E6	29.893	69.090 #
7)	B delta-BHC	4.764	4.261	226.8E6	1106.7E6	44.185	44.493
8)	Heptachlo...	5.690	4.871	223.7E6	1166.2E6	46.363	53.257
9)	A Endosulfan I	6.073	5.247	203.1E6	1126.9E6	45.062	54.066
10)	B gamma-Chl...	5.945	5.124	246.5E6	1573.2E6	51.487	65.762 #
11)	B alpha-Chl...	6.027	5.188	294.4E6	1406.6E6	60.852	61.430
12)	B 4,4'-DDE	6.195	5.373	155.1E6	1074.6E6	35.570	46.892 #
13)	MA Dieldrin	6.346	5.511	207.4E6	1199.1E6	43.240	51.665
14)	MA Endrin	6.573	5.788	168.9E6	968.0E6	40.931	44.578
15)	B Endosulfa...	6.785	6.079	164.9E6	968.1E6	40.841	47.933
16)	A 4,4'-DDD	6.703	5.928	144.1E6	705.8E6	42.001	36.899
17)	MA 4,4'-DDT	7.020	6.181	163.1E6	891.4E6	43.053	43.957
18)	B Endrin al...	6.914	6.257	125.0E6	691.8E6	40.787	45.179
19)	B Endosulfa...	7.148	6.481	151.8E6	821.0E6	39.550	41.842
20)	A Methoxychlor	7.492	6.752	65805389	426.5E6	32.567	39.610
21)	B Endrin ke...	7.629	6.989	160.3E6	828.4E6	39.351	38.350
22)	Mirex	8.113	7.183	105.4E6	613.3E6	34.669	36.772
23)	Chlordane-1	4.714	3.904	-2684297	292.4E6	N.D.	313.641
24)	Chlordane-2	5.237	4.491	38119350	263.6E6	174.608	276.997 #
25)	Chlordane-3	5.945	5.124	246.5E6	1573.2E6	285.834	529.664 #
26)	Chlordane-4	6.027	5.188	294.4E6	1406.6E6	280.226	561.116 #
27)	Chlordane-5	6.869	6.079	10939901	968.1E6	59.860	855.449 #

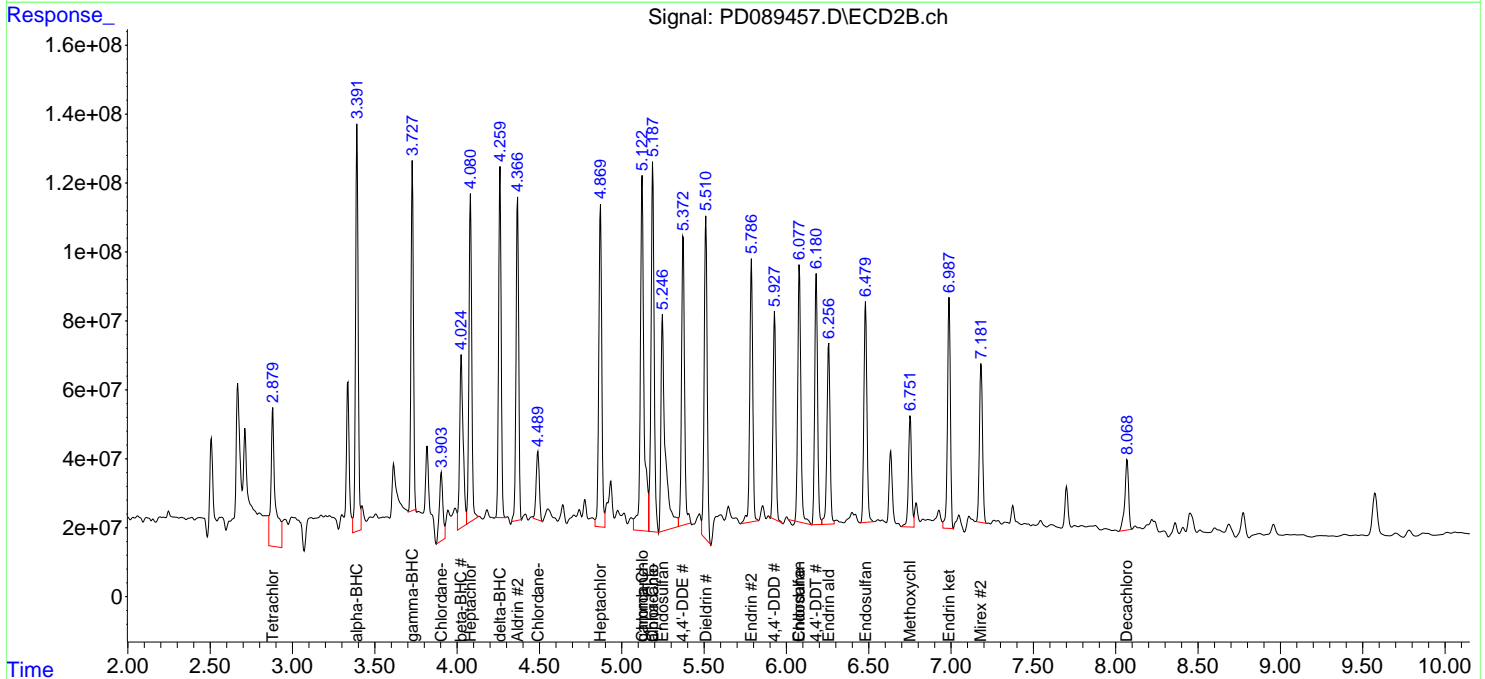
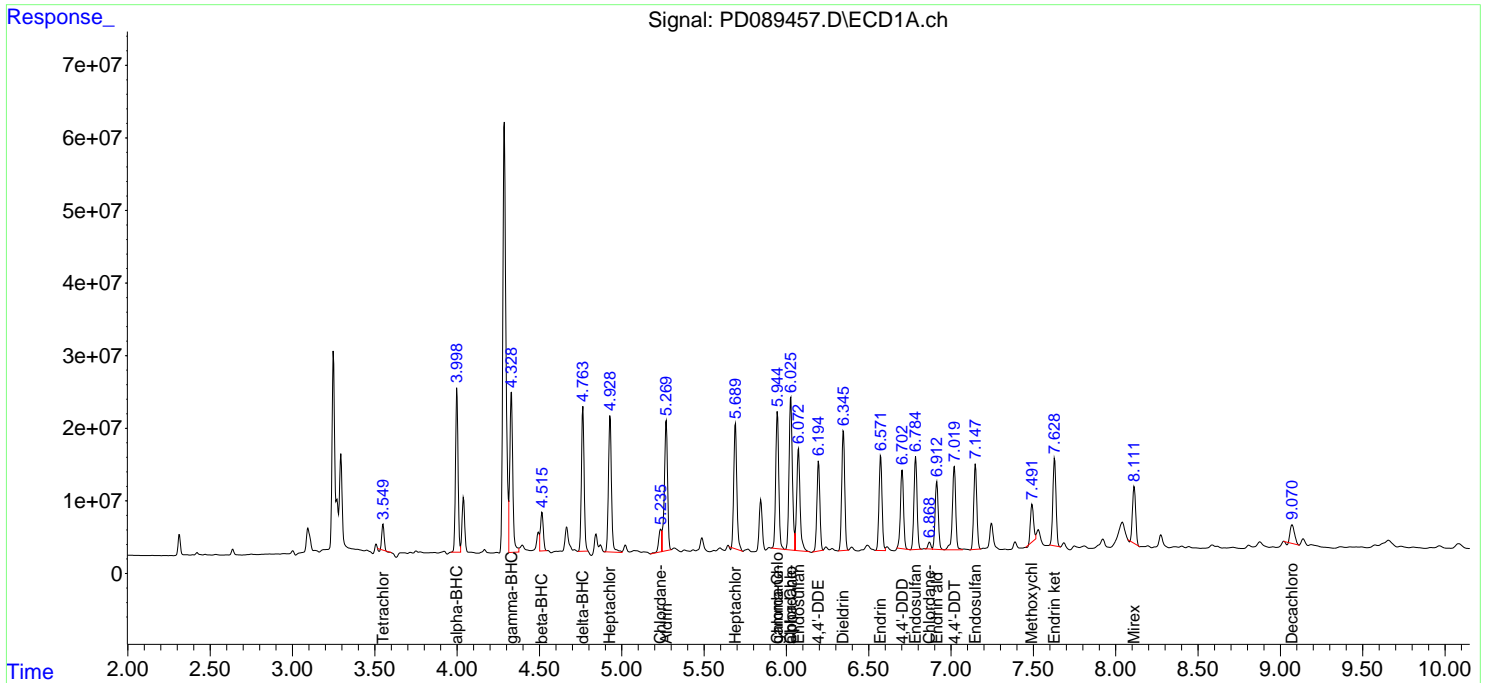
(f)=RT Delta > 1/2 Window (#)=Amounts differ by > 25% (m)=manual int.

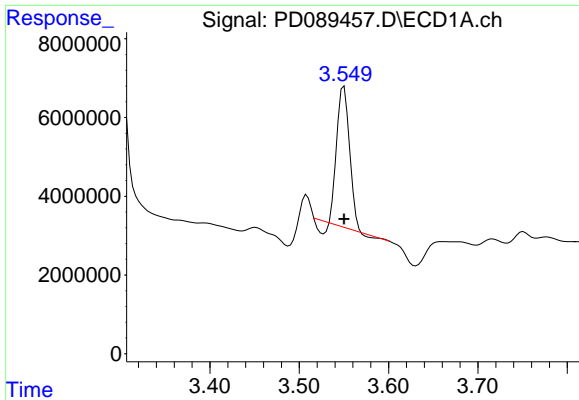
Data Path : Z:\pestpcbsrv\HPCHEM1\ECD\_D\Data\PD071125\  
 Data File : PD089457.D  
 Signal(s) : Signal #1: ECD1A.ch Signal #2: ECD2B.ch  
 Acq On : 11 Jul 2025 13:56  
 Operator : AR\AJ  
 Sample : Q25560-01MS  
 Misc :  
 ALS Vial : 9 Sample Multiplier: 1

Instrument :  
 ECD\_D  
 ClientSampleId :

Integration File signal 1: autoint1.e  
 Integration File signal 2: autoint2.e  
 Quant Time: Jul 11 22:51:38 2025  
 Quant Method : Z:\pestpcbsrv\HPCHEM1\ECD\_D\Method\PD061825.M  
 Quant Title : GC Extractables  
 QLast Update : Wed Jun 18 05:39:05 2025  
 Response via : Initial Calibration  
 Integrator: ChemStation

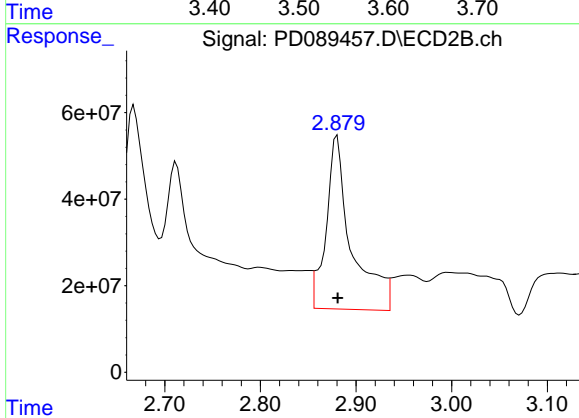
Volume Inj. : 1 µl  
 Signal #1 Phase : ZB-MR1 Signal #2 Phase: ZB-MR2  
 Signal #1 Info : 30M x 0.32mm x0.5 Signal #2 Info : 30M x 0.32mm x 0.25µm



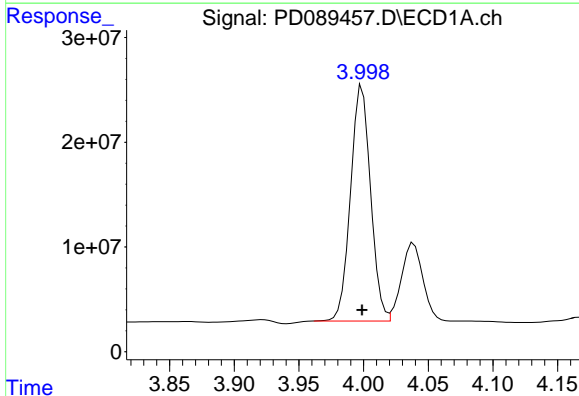


#1 Tetrachloro-m-xylene  
 R.T.: 3.550 min  
 Delta R.T.: 0.000 min  
 Response: 33659321  
 Conc: 11.80 ng/ml

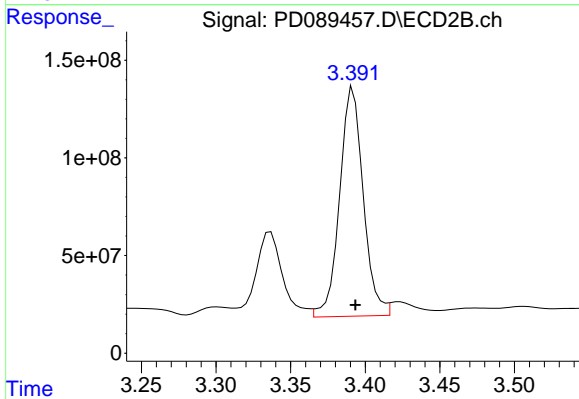
Instrument :  
 ECD\_D  
 ClientSampleId :



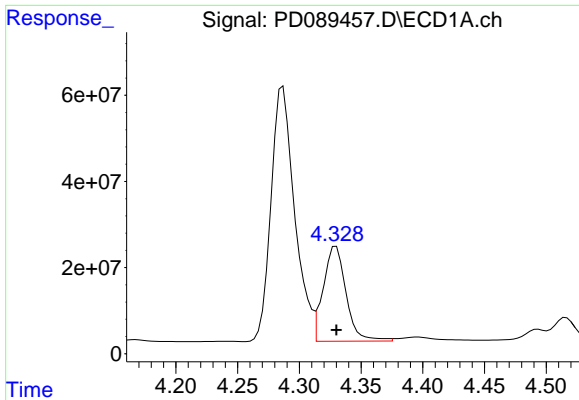
#1 Tetrachloro-m-xylene  
 R.T.: 2.880 min  
 Delta R.T.: 0.000 min  
 Response: 737021752  
 Conc: 43.47 ng/ml



#2 alpha-BHC  
 R.T.: 3.999 min  
 Delta R.T.: 0.000 min  
 Response: 242239022  
 Conc: 41.56 ng/ml

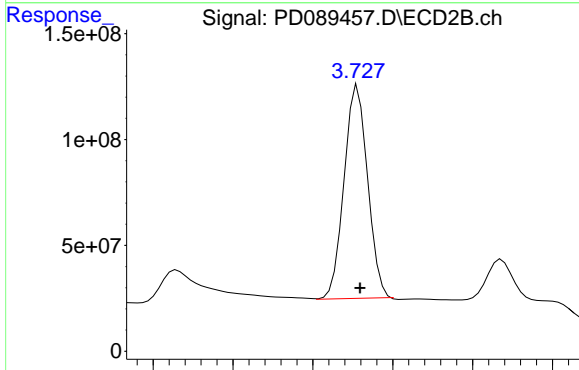


#2 alpha-BHC  
 R.T.: 3.392 min  
 Delta R.T.: -0.001 min  
 Response: 1293652651  
 Conc: 48.28 ng/ml

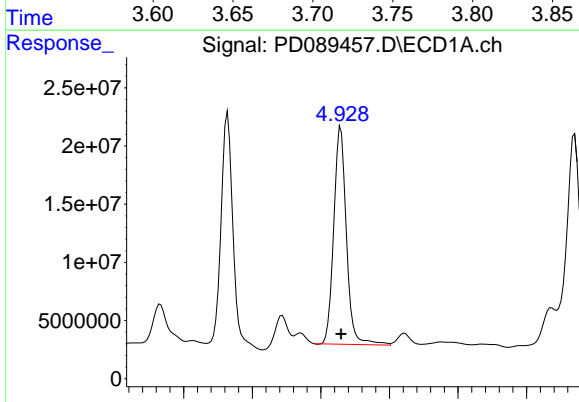


#3 gamma-BHC (Lindane)  
 R.T.: 4.330 min  
 Delta R.T.: 0.000 min  
 Response: 284502066  
 Conc: 50.97 ng/ml

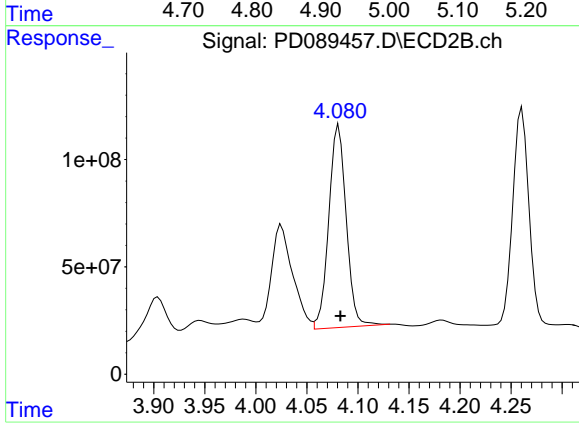
Instrument :  
 ECD\_D  
 ClientSampleId :



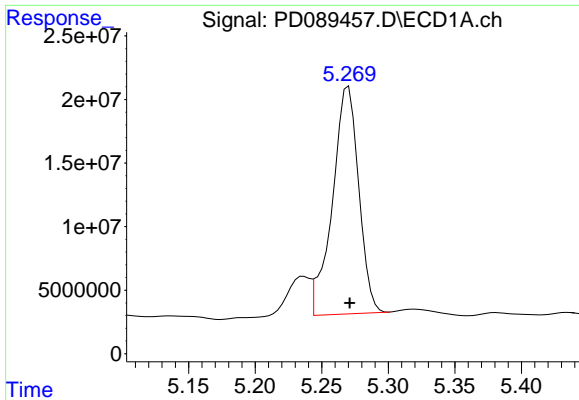
#3 gamma-BHC (Lindane)  
 R.T.: 3.728 min  
 Delta R.T.: -0.001 min  
 Response: 1033599257  
 Conc: 41.75 ng/ml



#4 Heptachlor  
 R.T.: 4.929 min  
 Delta R.T.: 0.000 min  
 Response: 239672422  
 Conc: 43.96 ng/ml

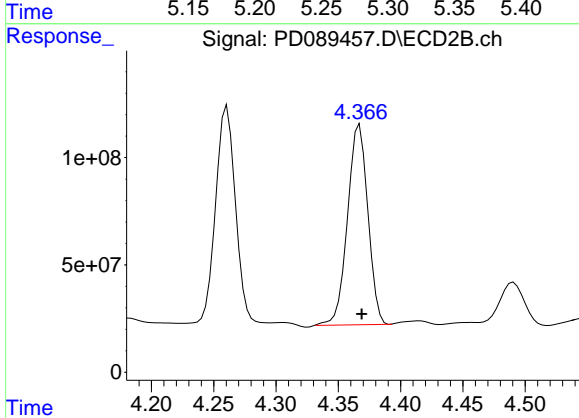


#4 Heptachlor  
 R.T.: 4.081 min  
 Delta R.T.: -0.002 min  
 Response: 1129038446  
 Conc: 45.09 ng/ml

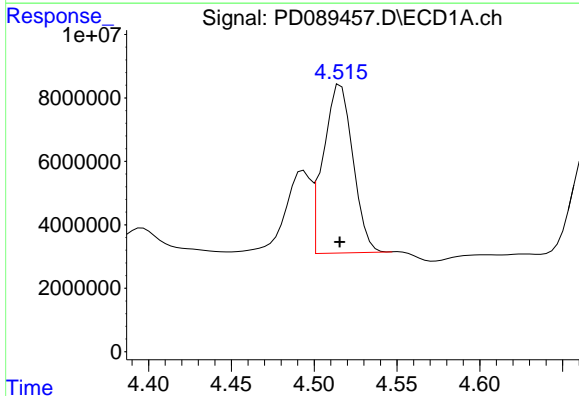


#5 Aldrin  
 R.T.: 5.270 min  
 Delta R.T.: 0.000 min  
 Response: 246529176  
 Conc: 46.40 ng/ml

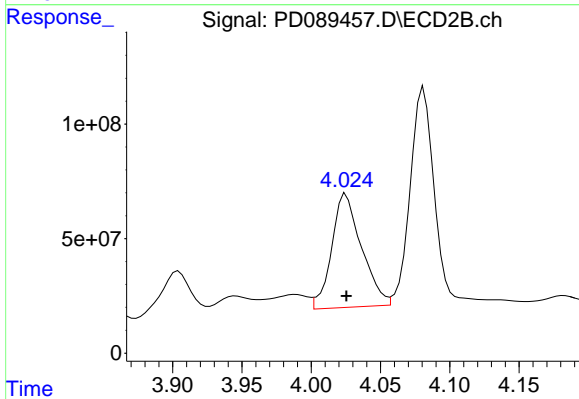
Instrument :  
 ECD\_D  
 ClientSampleId :



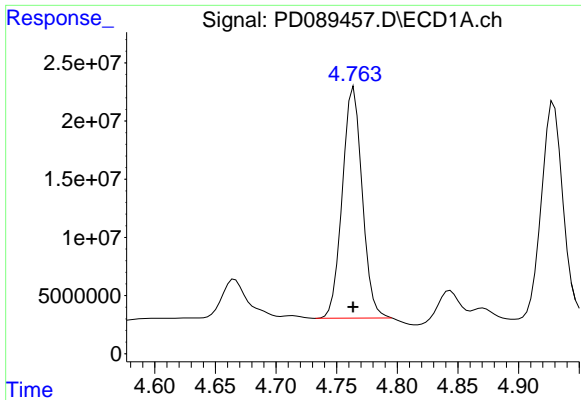
#5 Aldrin  
 R.T.: 4.367 min  
 Delta R.T.: -0.002 min  
 Response: 1065654526  
 Conc: 44.00 ng/ml



#6 beta-BHC  
 R.T.: 4.516 min  
 Delta R.T.: 0.000 min  
 Response: 65977385  
 Conc: 29.89 ng/ml



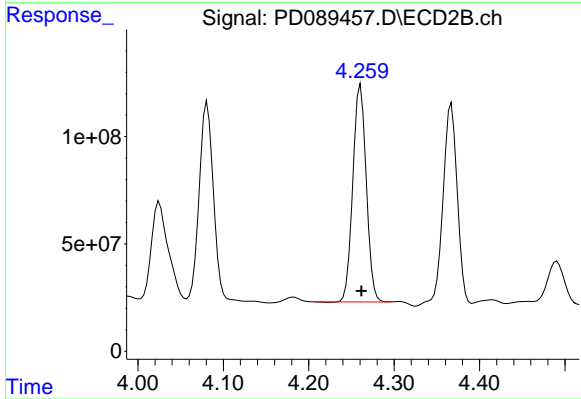
#6 beta-BHC  
 R.T.: 4.025 min  
 Delta R.T.: 0.000 min  
 Response: 742455700  
 Conc: 69.09 ng/ml



#7 delta-BHC

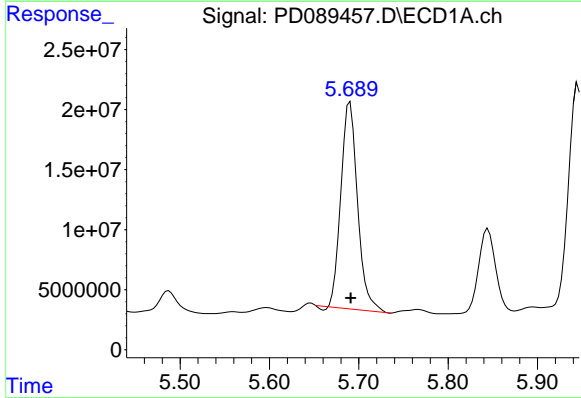
R.T.: 4.764 min  
Delta R.T.: 0.000 min  
Response: 226795716  
Conc: 44.18 ng/ml

Instrument :  
ECD\_D  
ClientSampleId :



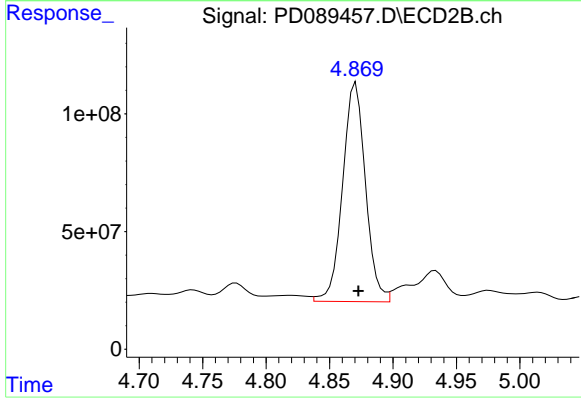
#7 delta-BHC

R.T.: 4.261 min  
Delta R.T.: -0.001 min  
Response: 1106690629  
Conc: 44.49 ng/ml



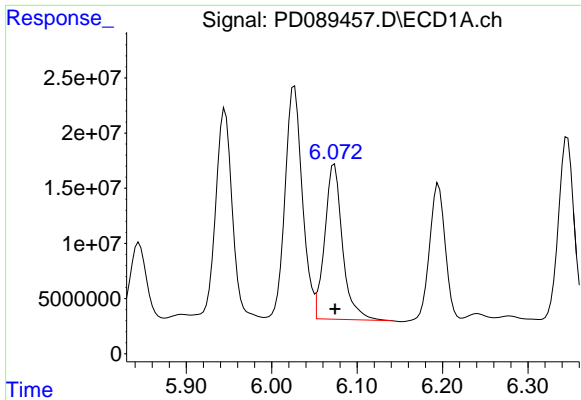
#8 Heptachlor epoxide

R.T.: 5.690 min  
Delta R.T.: 0.000 min  
Response: 223650277  
Conc: 46.36 ng/ml



#8 Heptachlor epoxide

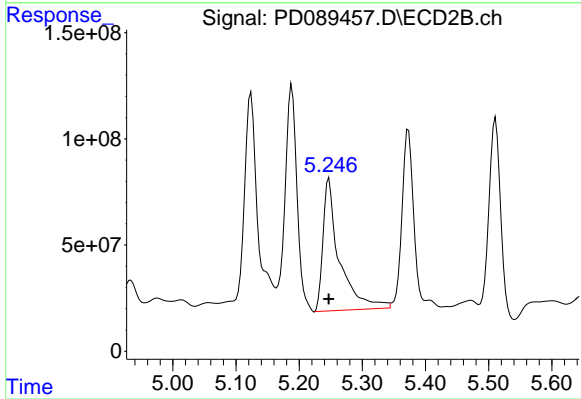
R.T.: 4.871 min  
Delta R.T.: -0.002 min  
Response: 1166221282  
Conc: 53.26 ng/ml



#9 Endosulfan I

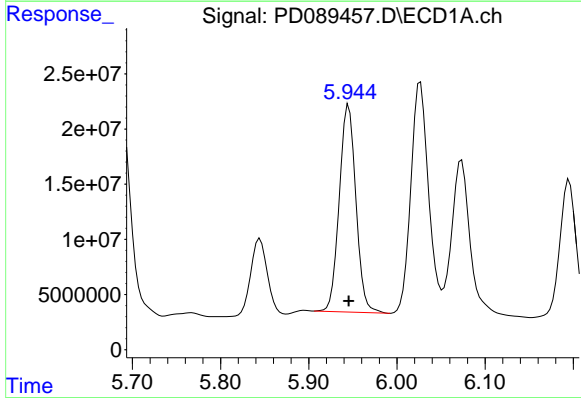
R.T.: 6.073 min  
 Delta R.T.: 0.000 min  
 Response: 203112856  
 Conc: 45.06 ng/ml

Instrument :  
 ECD\_D  
 ClientSampleId :



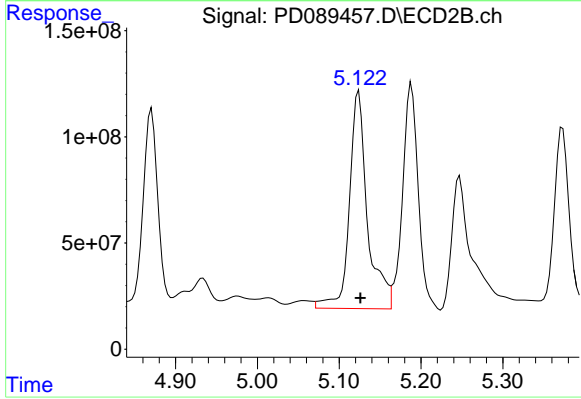
#9 Endosulfan I

R.T.: 5.247 min  
 Delta R.T.: 0.000 min  
 Response: 1126867940  
 Conc: 54.07 ng/ml



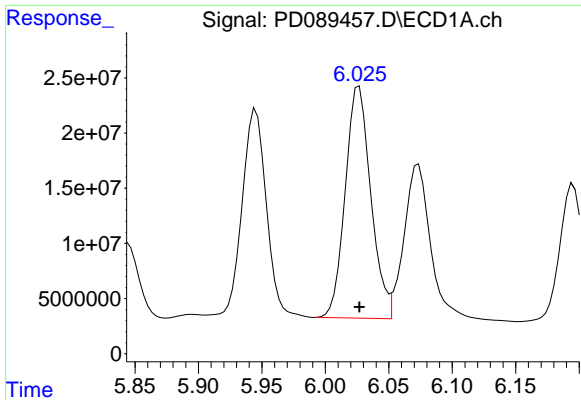
#10 gamma-Chlordane

R.T.: 5.945 min  
 Delta R.T.: 0.000 min  
 Response: 246526854  
 Conc: 51.49 ng/ml



#10 gamma-Chlordane

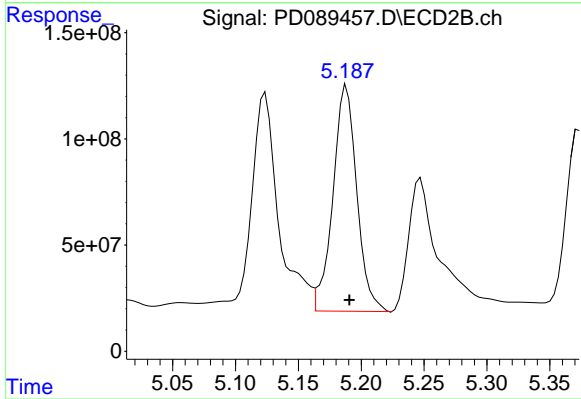
R.T.: 5.124 min  
 Delta R.T.: -0.002 min  
 Response: 1573208117  
 Conc: 65.76 ng/ml



#11 alpha-Chlordane

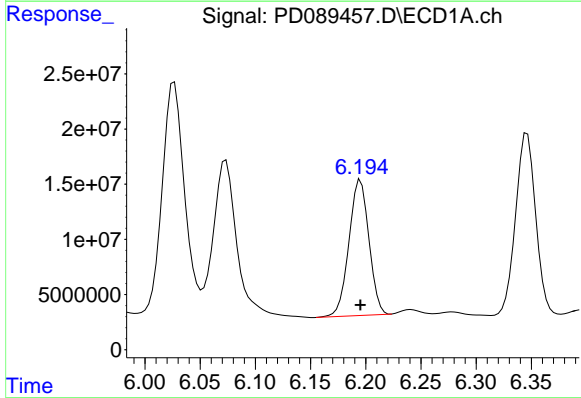
R.T.: 6.027 min  
 Delta R.T.: 0.000 min  
 Response: 294435931  
 Conc: 60.85 ng/ml

Instrument :  
 ECD\_D  
 ClientSampleId :



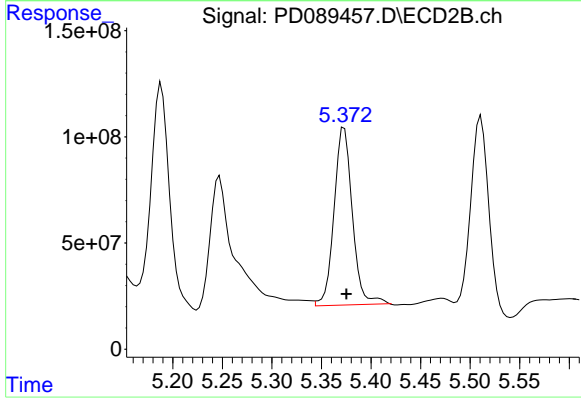
#11 alpha-Chlordane

R.T.: 5.188 min  
 Delta R.T.: -0.002 min  
 Response: 1406561184  
 Conc: 61.43 ng/ml



#12 4,4'-DDE

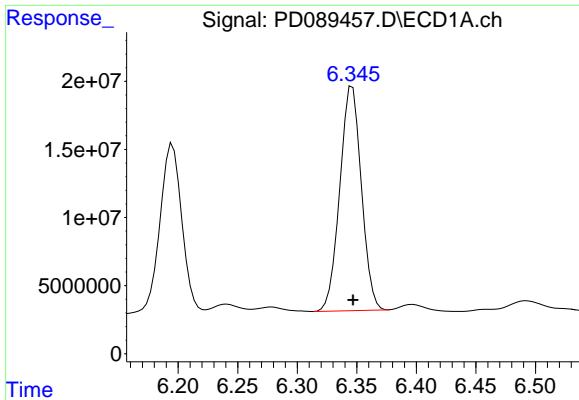
R.T.: 6.195 min  
 Delta R.T.: 0.000 min  
 Response: 155123661  
 Conc: 35.57 ng/ml



#12 4,4'-DDE

R.T.: 5.373 min  
 Delta R.T.: -0.002 min  
 Response: 1074581898  
 Conc: 46.89 ng/ml

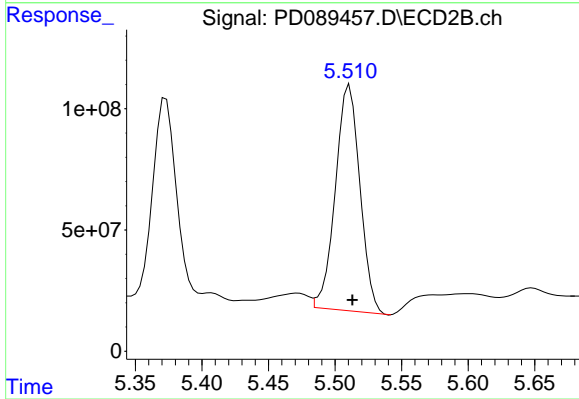




#13 Dieldrin

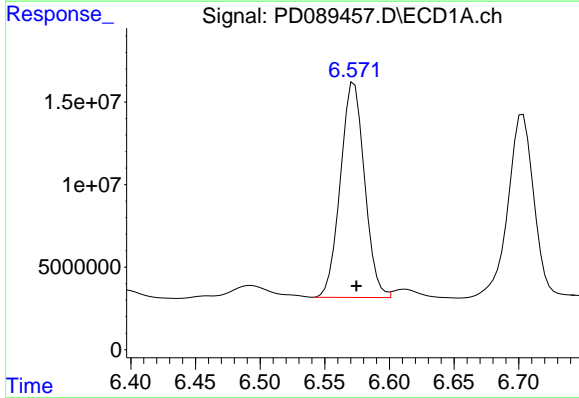
R.T.: 6.346 min  
 Delta R.T.: 0.000 min  
 Response: 207440059  
 Conc: 43.24 ng/ml

Instrument :  
 ECD\_D  
 ClientSampleId :



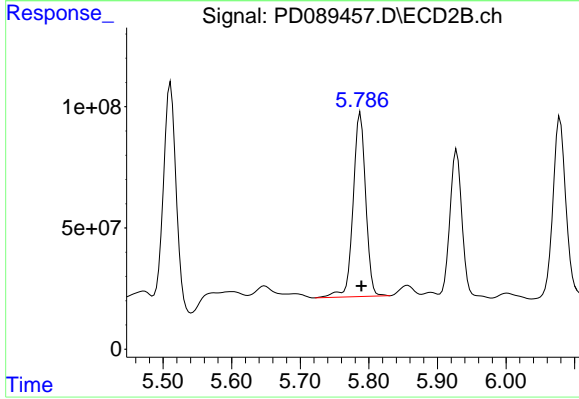
#13 Dieldrin

R.T.: 5.511 min  
 Delta R.T.: -0.002 min  
 Response: 1199069024  
 Conc: 51.67 ng/ml



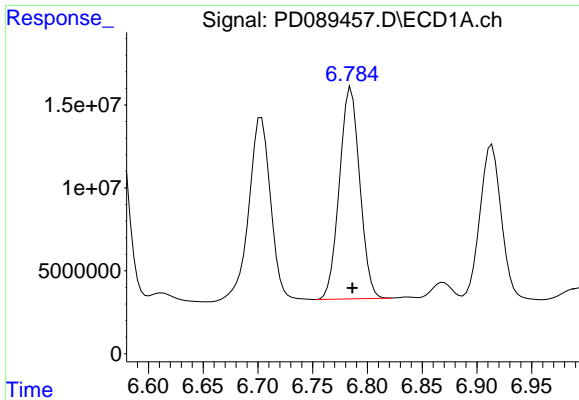
#14 Endrin

R.T.: 6.573 min  
 Delta R.T.: -0.002 min  
 Response: 168863769  
 Conc: 40.93 ng/ml



#14 Endrin

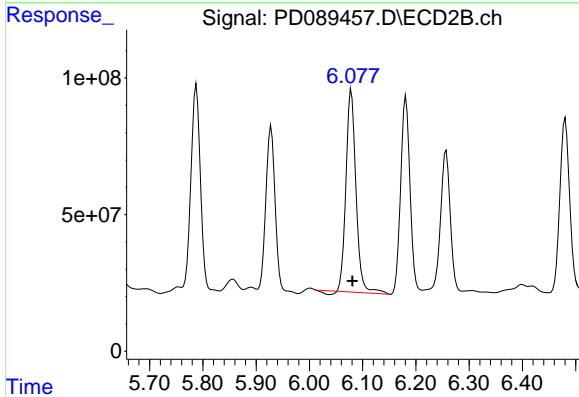
R.T.: 5.788 min  
 Delta R.T.: -0.001 min  
 Response: 967968370  
 Conc: 44.58 ng/ml



#15 Endosulfan II

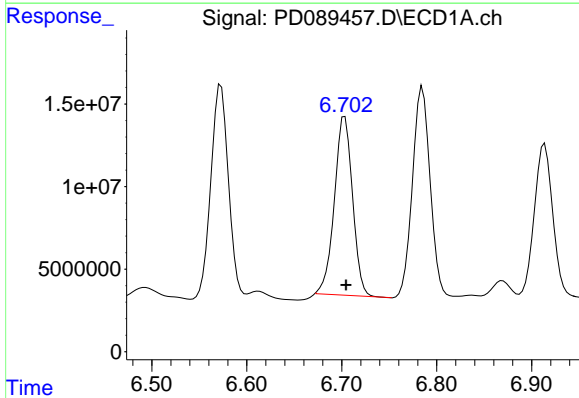
R.T.: 6.785 min  
Delta R.T.: -0.001 min  
Response: 164858487  
Conc: 40.84 ng/ml

Instrument :  
ECD\_D  
ClientSampleId :



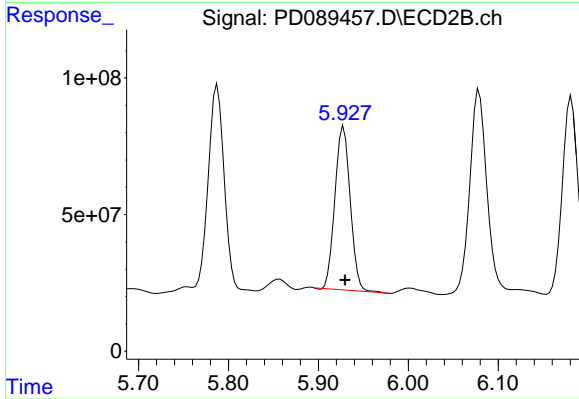
#15 Endosulfan II

R.T.: 6.079 min  
Delta R.T.: -0.002 min  
Response: 968078587  
Conc: 47.93 ng/ml



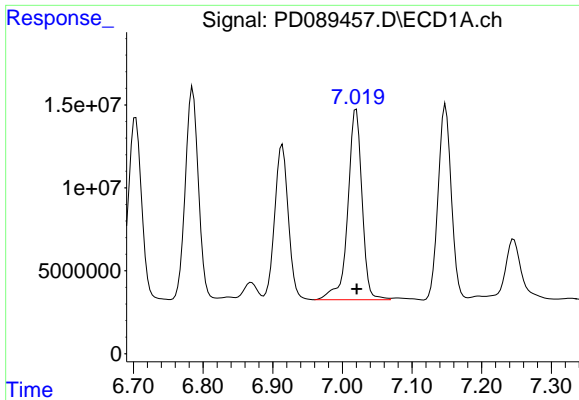
#16 4,4'-DDD

R.T.: 6.703 min  
Delta R.T.: -0.001 min  
Response: 144148383  
Conc: 42.00 ng/ml



#16 4,4'-DDD

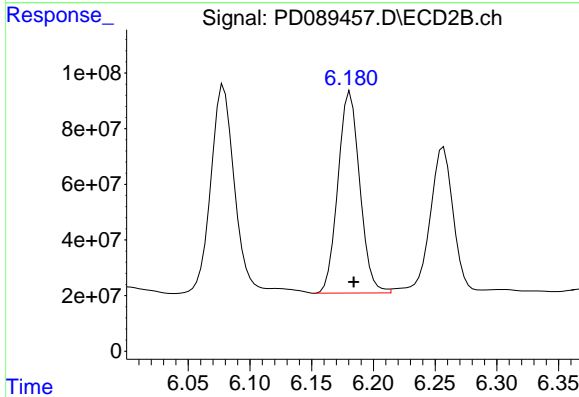
R.T.: 5.928 min  
Delta R.T.: -0.002 min  
Response: 705848177  
Conc: 36.90 ng/ml



#17 4,4'-DDT

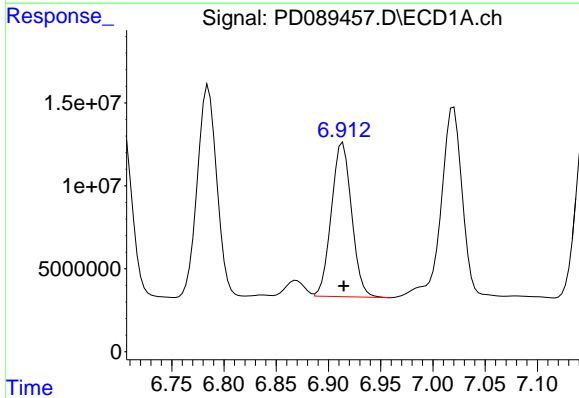
R.T.: 7.020 min  
 Delta R.T.: 0.000 min  
 Response: 163093187  
 Conc: 43.05 ng/ml

Instrument :  
 ECD\_D  
 ClientSampleId :



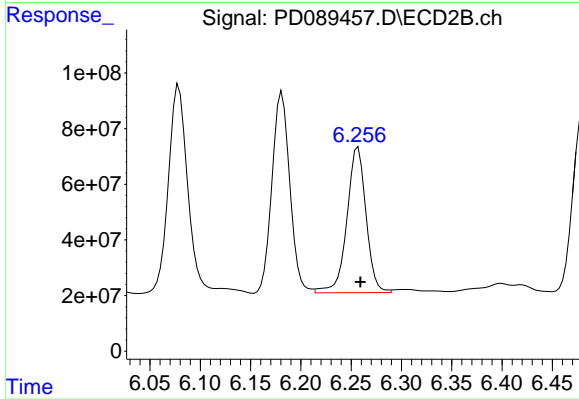
#17 4,4'-DDT

R.T.: 6.181 min  
 Delta R.T.: -0.003 min  
 Response: 891425505  
 Conc: 43.96 ng/ml



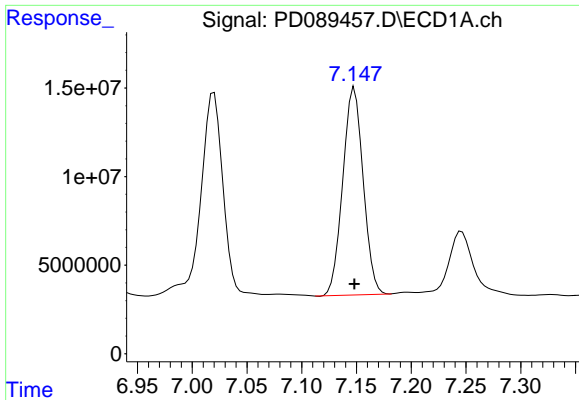
#18 Endrin aldehyde

R.T.: 6.914 min  
 Delta R.T.: 0.000 min  
 Response: 124968770  
 Conc: 40.79 ng/ml



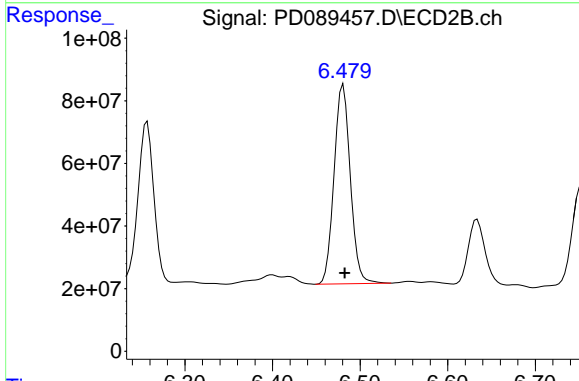
#18 Endrin aldehyde

R.T.: 6.257 min  
 Delta R.T.: -0.002 min  
 Response: 691753633  
 Conc: 45.18 ng/ml

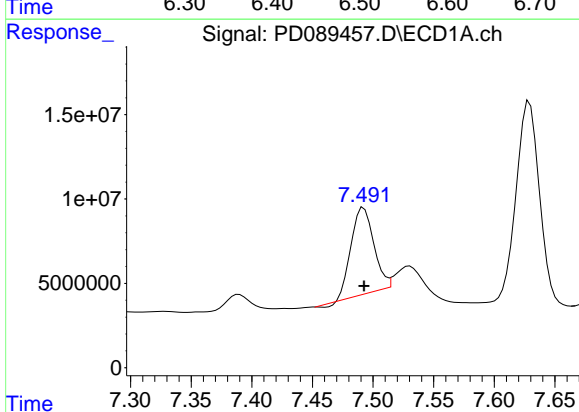


#19 Endosulfan Sulfate  
 R.T.: 7.148 min  
 Delta R.T.: 0.000 min  
 Response: 151763777  
 Conc: 39.55 ng/ml

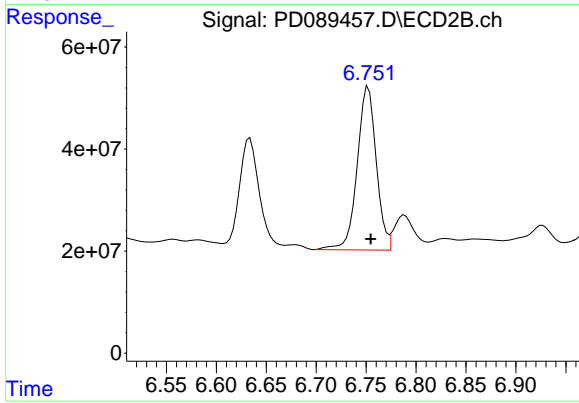
Instrument :  
 ECD\_D  
 ClientSampleId :



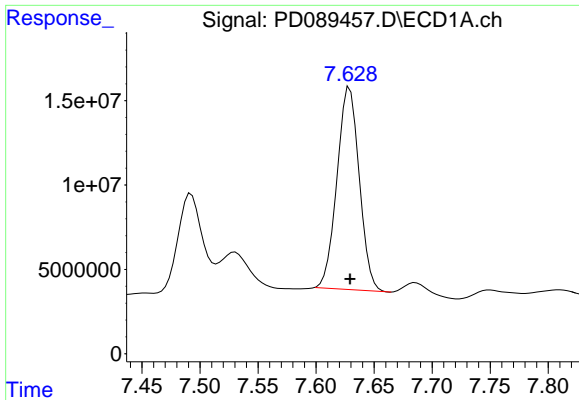
#19 Endosulfan Sulfate  
 R.T.: 6.481 min  
 Delta R.T.: -0.002 min  
 Response: 820993893  
 Conc: 41.84 ng/ml



#20 Methoxychlor  
 R.T.: 7.492 min  
 Delta R.T.: 0.000 min  
 Response: 65805389  
 Conc: 32.57 ng/ml



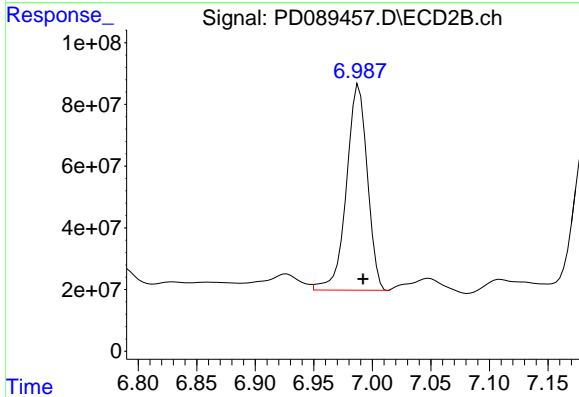
#20 Methoxychlor  
 R.T.: 6.752 min  
 Delta R.T.: -0.002 min  
 Response: 426526191  
 Conc: 39.61 ng/ml



#21 Endrin ketone

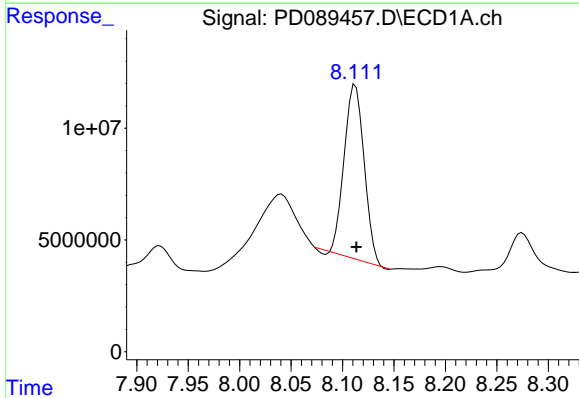
R.T.: 7.629 min  
 Delta R.T.: 0.000 min  
 Response: 160281153  
 Conc: 39.35 ng/ml

Instrument :  
 ECD\_D  
 ClientSampleId :



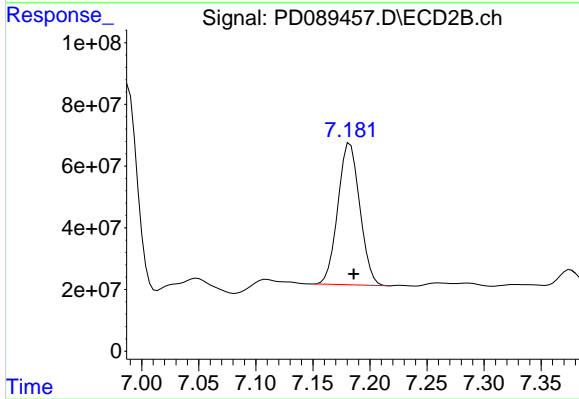
#21 Endrin ketone

R.T.: 6.989 min  
 Delta R.T.: -0.003 min  
 Response: 828425206  
 Conc: 38.35 ng/ml



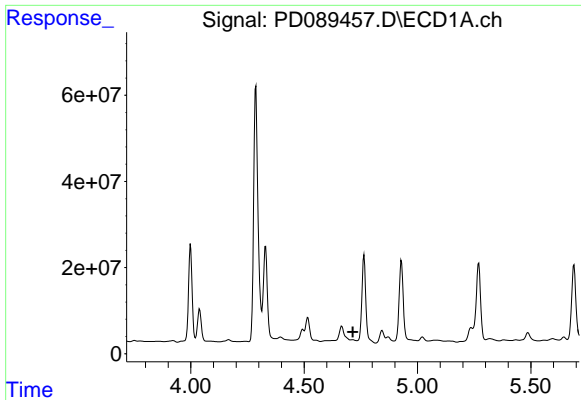
#22 Mirex

R.T.: 8.113 min  
 Delta R.T.: 0.000 min  
 Response: 105398506  
 Conc: 34.67 ng/ml



#22 Mirex

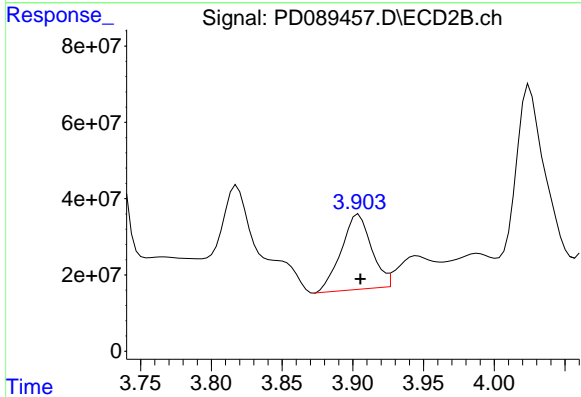
R.T.: 7.183 min  
 Delta R.T.: -0.003 min  
 Response: 613284121  
 Conc: 36.77 ng/ml



#23 Chlordane-1

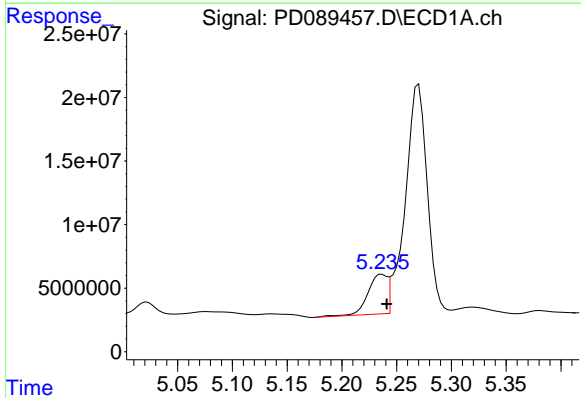
R.T.: 4.714 min  
 Delta R.T.: -0.001 min  
 Response: -2684297  
 Conc: N.D.

Instrument :  
 ECD\_D  
 ClientSampleId :



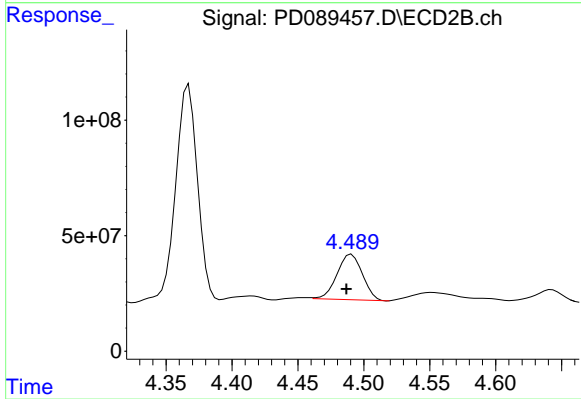
#23 Chlordane-1

R.T.: 3.904 min  
 Delta R.T.: -0.001 min  
 Response: 292392208  
 Conc: 313.64 ng/ml



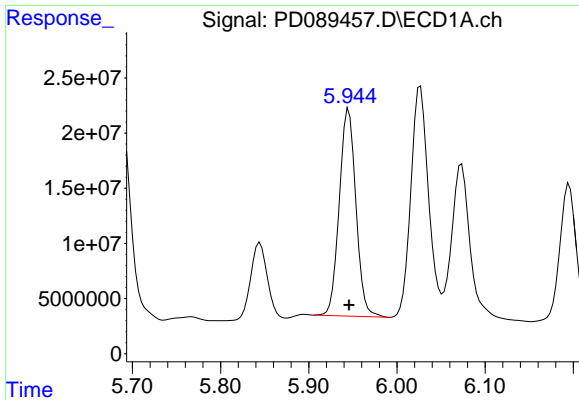
#24 Chlordane-2

R.T.: 5.237 min  
 Delta R.T.: -0.004 min  
 Response: 38119350  
 Conc: 174.61 ng/ml



#24 Chlordane-2

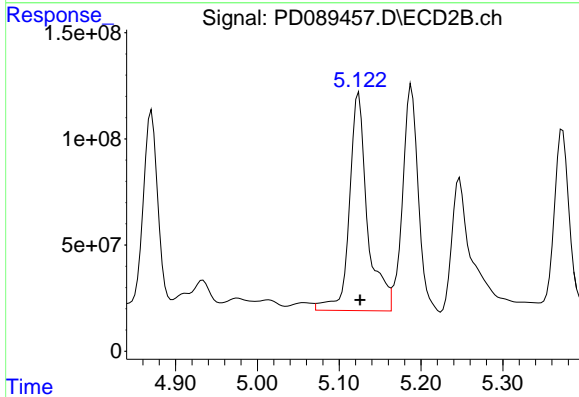
R.T.: 4.491 min  
 Delta R.T.: 0.004 min  
 Response: 263595286  
 Conc: 277.00 ng/ml



#25 Chlordane-3

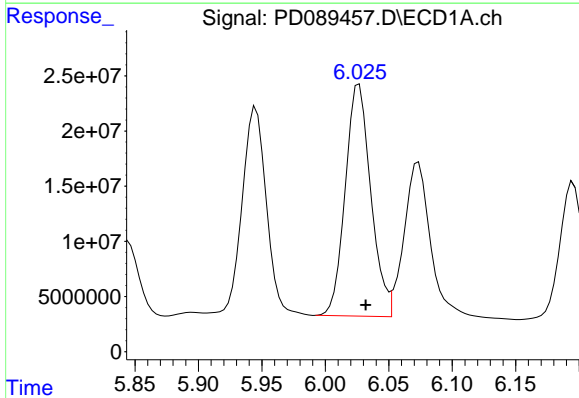
R.T.: 5.945 min  
 Delta R.T.: 0.000 min  
 Response: 246526854  
 Conc: 285.83 ng/ml

Instrument :  
 ECD\_D  
 ClientSampleId :



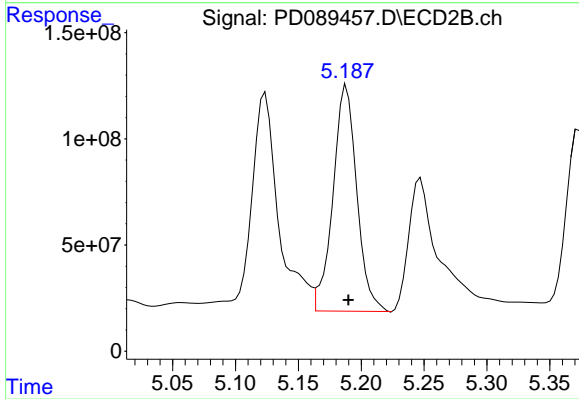
#25 Chlordane-3

R.T.: 5.124 min  
 Delta R.T.: -0.002 min  
 Response: 1573208117  
 Conc: 529.66 ng/ml



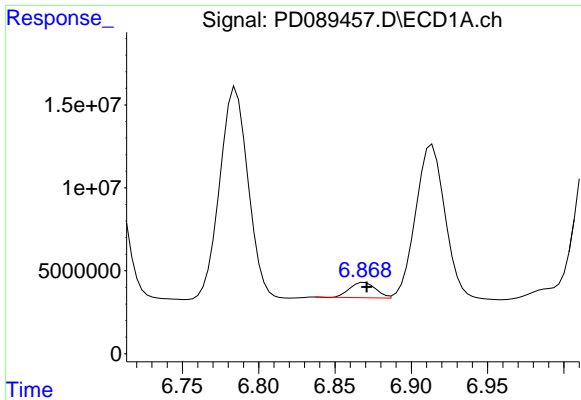
#26 Chlordane-4

R.T.: 6.027 min  
 Delta R.T.: -0.005 min  
 Response: 294435931  
 Conc: 280.23 ng/ml



#26 Chlordane-4

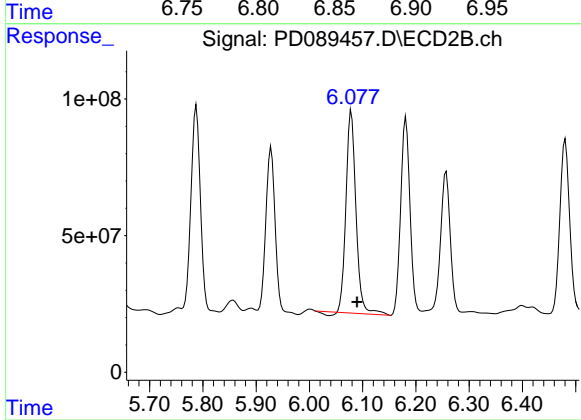
R.T.: 5.188 min  
 Delta R.T.: -0.001 min  
 Response: 1406561184  
 Conc: 561.12 ng/ml



#27 Chlordane-5

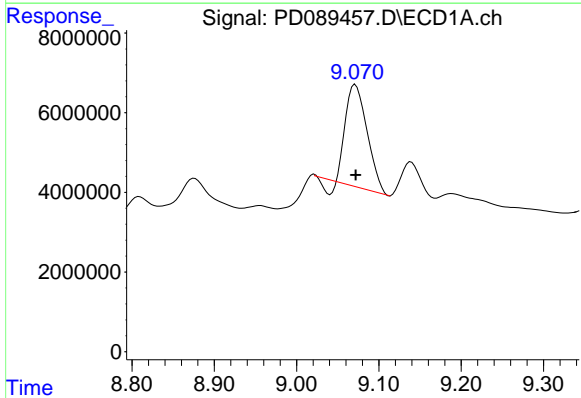
R.T.: 6.869 min  
Delta R.T.: -0.002 min  
Response: 10939901  
Conc: 59.86 ng/ml

Instrument :  
ECD\_D  
ClientSampleId :



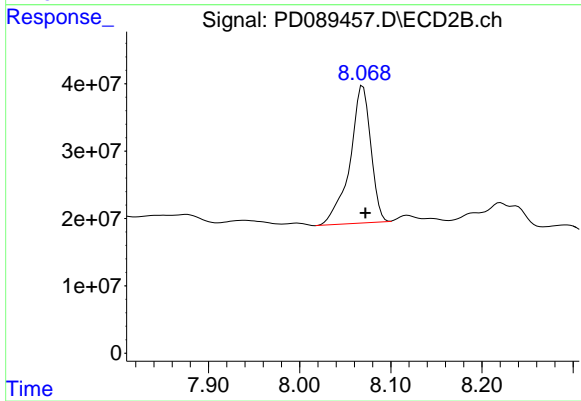
#27 Chlordane-5

R.T.: 6.079 min  
Delta R.T.: -0.011 min  
Response: 968078587  
Conc: 855.45 ng/ml



#28 Decachlorobiphenyl

R.T.: 9.071 min  
Delta R.T.: 0.000 min  
Response: 45006386  
Conc: 11.46 ng/ml



#28 Decachlorobiphenyl

R.T.: 8.069 min  
Delta R.T.: -0.003 min  
Response: 323320126  
Conc: 16.35 ng/ml