

Data Path : Z:\pestpcbsrv\HPCHEM1\ECD_D\Data\PD071125\
 Data File : PD089459.D
 Signal(s) : Signal #1: ECD1A.ch Signal #2: ECD2B.ch
 Acq On : 11 Jul 2025 14:23
 Operator : AR\AJ
 Sample : Q2564-01
 Misc :
 ALS Vial : 11 Sample Multiplier: 1

Instrument :
 ECD_D
 ClientSampleId :

Integration File signal 1: autoint1.e
 Integration File signal 2: autoint2.e
 Quant Time: Jul 11 22:52:16 2025
 Quant Method : Z:\pestpcbsrv\HPCHEM1\ECD_D\Method\PD061825.M
 Quant Title : GC Extractables
 QLast Update : Wed Jun 18 05:39:05 2025
 Response via : Initial Calibration
 Integrator: ChemStation

Volume Inj. : 1 µl
 Signal #1 Phase : ZB-MR2 Signal #2 Phase: ZB-MR2
 Signal #1 Info : 30M x 0.32mm x0.5 Signal #2 Info : 30M x 0.32mm x 0.25µm

Compound	RT#1	RT#2	Resp#1	Resp#2	ng/ml	ng/ml

System Monitoring Compounds						
1) SA Tetrachlo...	3.550	2.881	20718915	119.2E6	7.262	7.031
28) SA Decachlor...	9.070	8.069	45978265	217.9E6	11.706	11.021
Target Compounds						
2) A alpha-BHC	0.000	3.411f	0	9650788	N.D.	0.360 #
3) MA gamma-BHC...	0.000	3.702f	0	3381957	N.D.	0.137 #
4) MA Heptachlor	4.949f	4.099f	537074	7154095	0.099	0.286 #
5) MB Aldrin	5.294f	4.347f	145042	5729675	0.027	0.237 #
6) B beta-BHC	0.000	4.048f	0	5598132	N.D.	0.521 #
7) B delta-BHC	4.776	4.235f	1047822	5847792	0.204	0.235
8) B Heptachlo...	5.692	4.863	753967	7205719	0.156	0.329 #
9) A Endosulfan I	6.069	5.250	359378	2501528	0.080	0.120 #
10) B gamma-Chl...	5.943	5.149f	2578950	8206980	0.539	0.343 #
11) B alpha-Chl...	6.030	5.187	2786798	4176368	0.576	0.182 #
12) B 4,4'-DDE	6.194	5.374	2033789	12136546	0.466	0.530
13) MA Dieldrin	6.344	5.509	77899	1487315	0.016	0.064 #
14) MA Endrin	0.000	5.793	0	11413486	N.D.	0.526 #
15) B Endosulfa...	0.000	6.102f	0	3151622	N.D.	0.156 #
16) A 4,4'-DDD	0.000	5.925	0	2887195	N.D.	0.151 #
17) MA 4,4'-DDT	7.018	6.181	4514650	11005119	1.192	0.543 #
18) B Endrin al...	0.000	6.248	0	1849241	N.D.	0.121 #
19) B Endosulfa...	7.168f	6.484	-62961	1382419	N.D.	0.070
20) A Methoxychlor	0.000	6.731f	0	1227111	N.D.	0.114 #
23) Chlordane-1	0.000	3.913	0	6962418	N.D.	7.468 #
24) Chlordane-2	5.233	4.477	201262	2190547	0.922	2.302 #
25) Chlordane-3	5.943	5.149f	2578950	8206980	2.990	2.763
26) Chlordane-4	6.030	5.187	2786798	4176368	2.652	1.666 #
27) Chlordane-5	6.878	6.102	15326	3151622	0.084	2.785 #

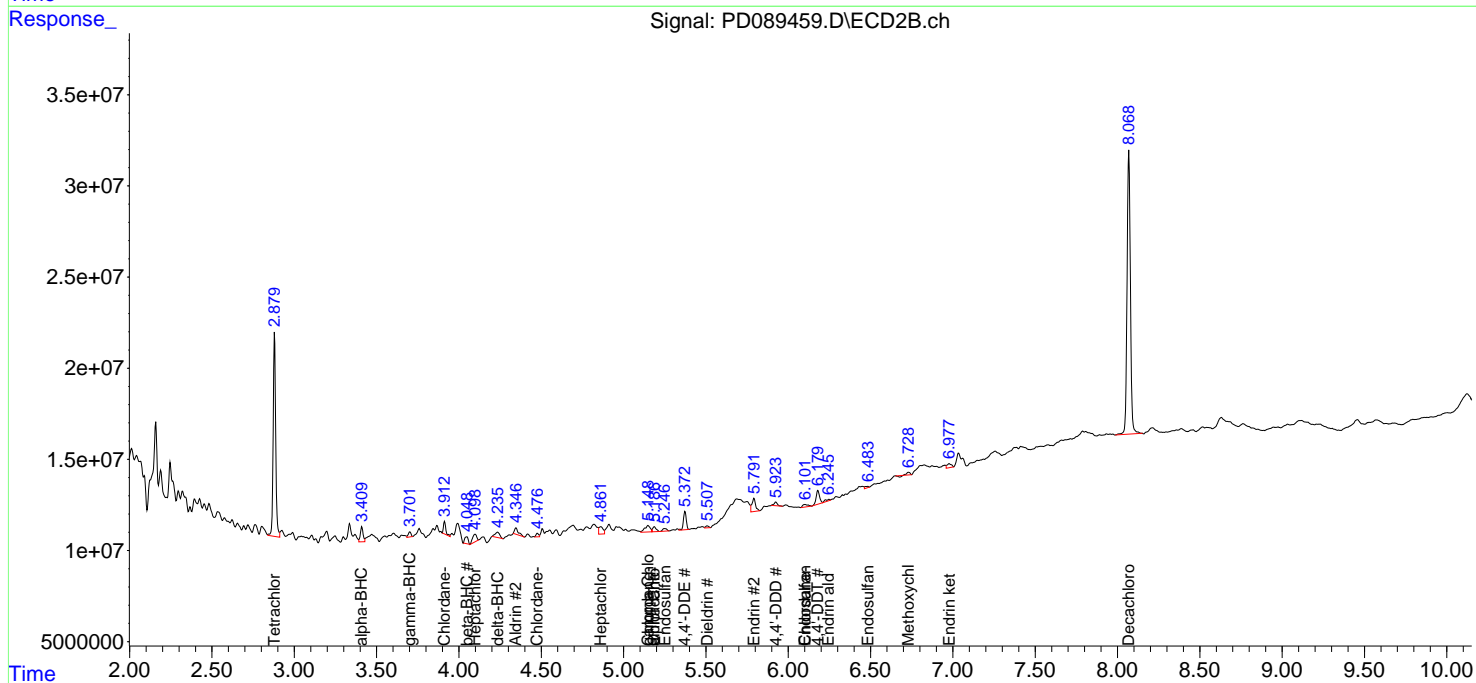
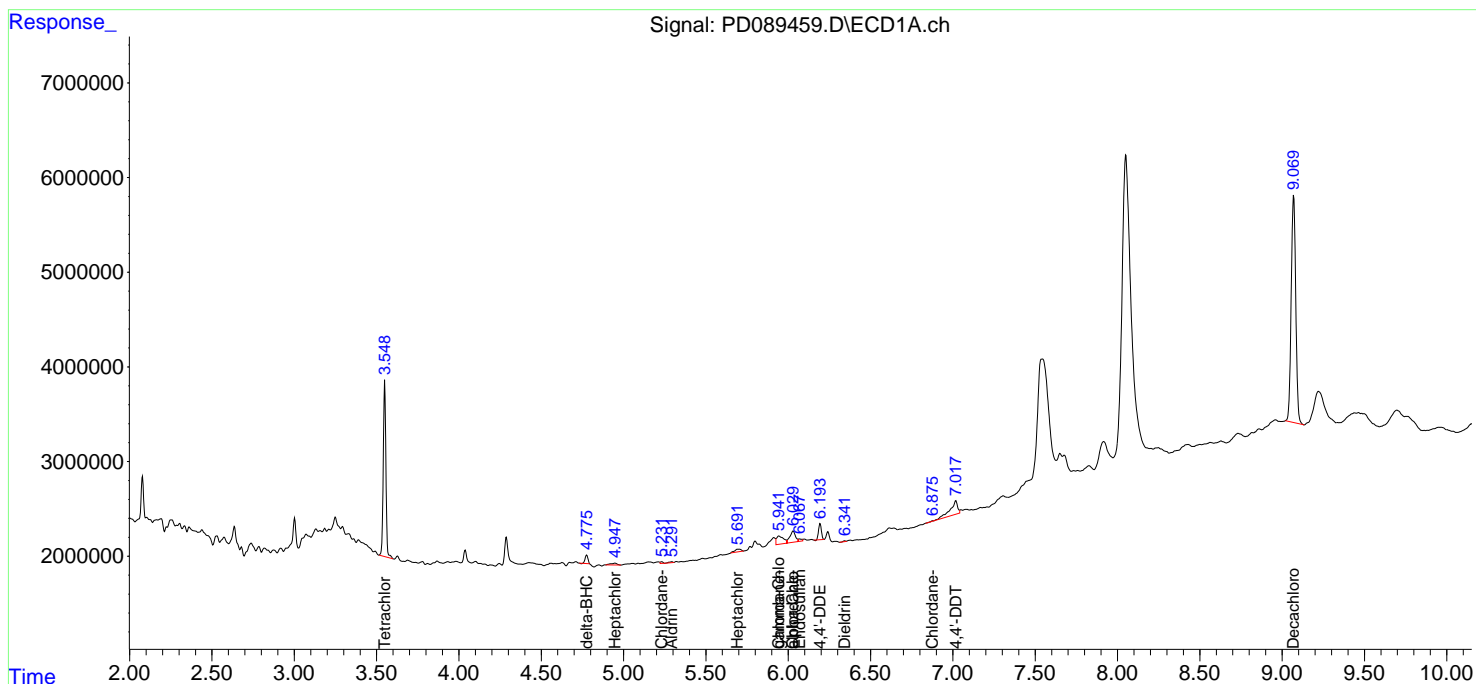
(f)=RT Delta > 1/2 Window (#)=Amounts differ by > 25% (m)=manual int.

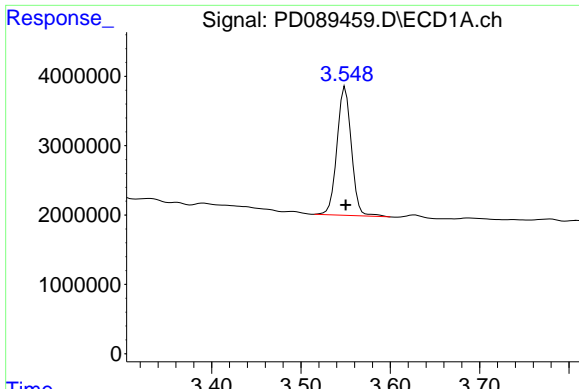
Data Path : Z:\pestpcbsrv\HPCHEM1\ECD_D\Data\PD071125\
 Data File : PD089459.D
 Signal(s) : Signal #1: ECD1A.ch Signal #2: ECD2B.ch
 Acq On : 11 Jul 2025 14:23
 Operator : AR\AJ
 Sample : Q2564-01
 Misc :
 ALS Vial : 11 Sample Multiplier: 1

Instrument :
 ECD_D
 ClientSampleId :

Integration File signal 1: autoint1.e
 Integration File signal 2: autoint2.e
 Quant Time: Jul 11 22:52:16 2025
 Quant Method : Z:\pestpcbsrv\HPCHEM1\ECD_D\Method\PD061825.M
 Quant Title : GC Extractables
 QLast Update : Wed Jun 18 05:39:05 2025
 Response via : Initial Calibration
 Integrator: ChemStation

Volume Inj. : 1 µl
 Signal #1 Phase : ZB-MR1 Signal #2 Phase: ZB-MR2
 Signal #1 Info : 30M x 0.32mm x0.5 Signal #2 Info : 30M x 0.32mm x 0.25µm

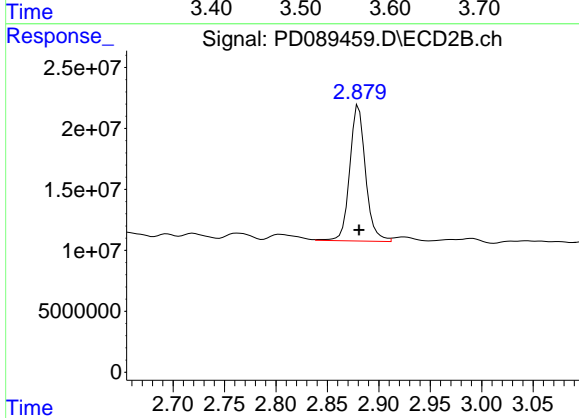




#1 Tetrachloro-m-xylene

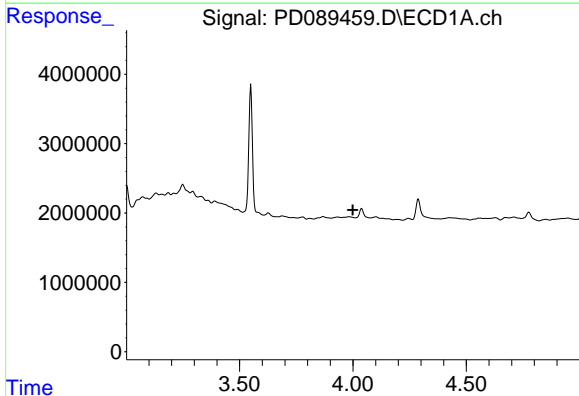
R.T.: 3.550 min
 Delta R.T.: 0.000 min
 Response: 20718915
 Conc: 7.26 ng/ml

Instrument :
 ECD_D
 ClientSampleId :



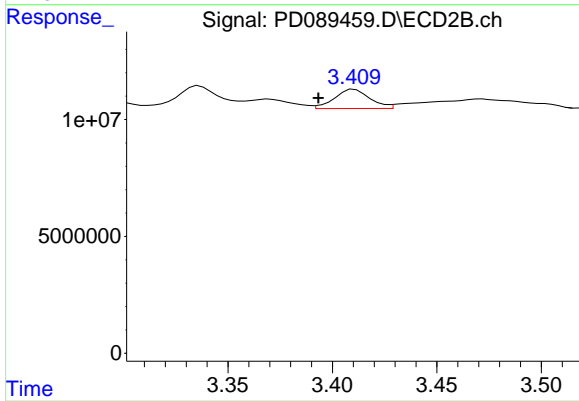
#1 Tetrachloro-m-xylene

R.T.: 2.881 min
 Delta R.T.: 0.000 min
 Response: 119205739
 Conc: 7.03 ng/ml



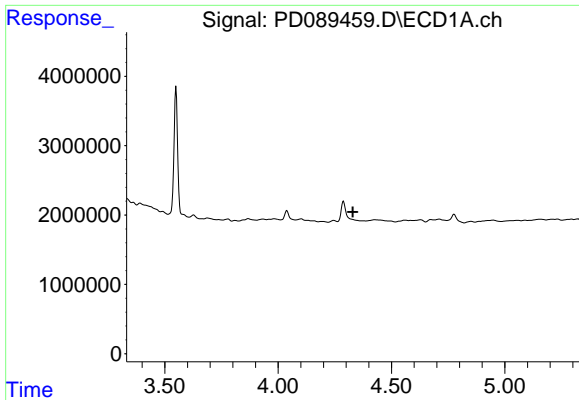
#2 alpha-BHC

R.T.: 0.000 min
 Exp R.T. : 3.999 min
 Response: 0
 Conc: N.D.



#2 alpha-BHC

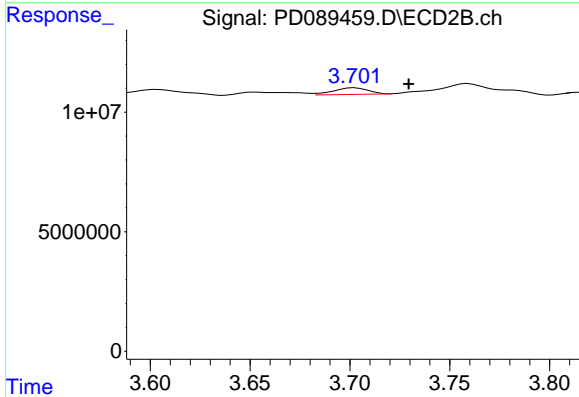
R.T.: 3.411 min
 Delta R.T.: 0.017 min
 Response: 9650788
 Conc: 0.36 ng/ml



#3 gamma-BHC (Lindane)

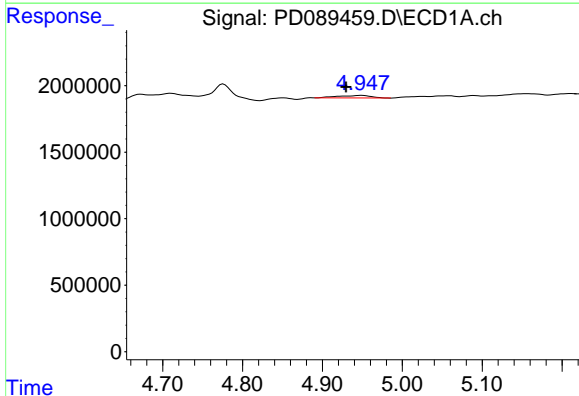
R.T.: 0.000 min
 Exp R.T.: 4.330 min
 Response: 0
 Conc: N.D.

Instrument :
 ECD_D
 ClientSampleId :



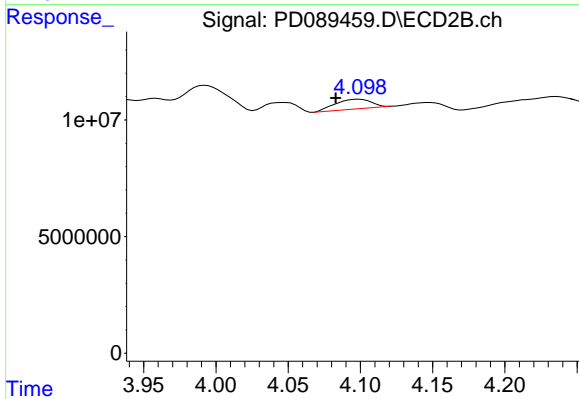
#3 gamma-BHC (Lindane)

R.T.: 3.702 min
 Delta R.T.: -0.027 min
 Response: 3381957
 Conc: 0.14 ng/ml



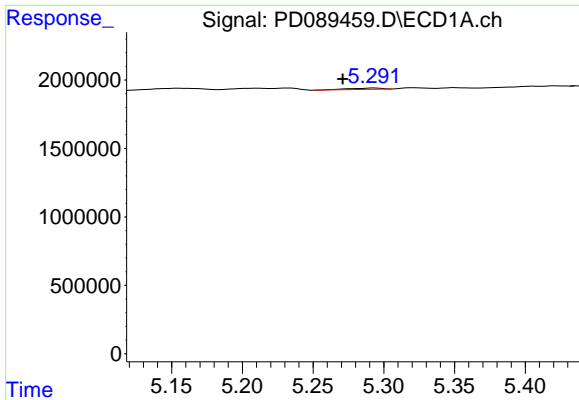
#4 Heptachlor

R.T.: 4.949 min
 Delta R.T.: 0.019 min
 Response: 537074
 Conc: 0.10 ng/ml



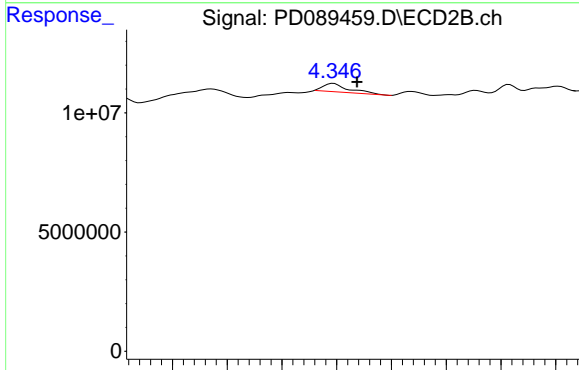
#4 Heptachlor

R.T.: 4.099 min
 Delta R.T.: 0.017 min
 Response: 7154095
 Conc: 0.29 ng/ml

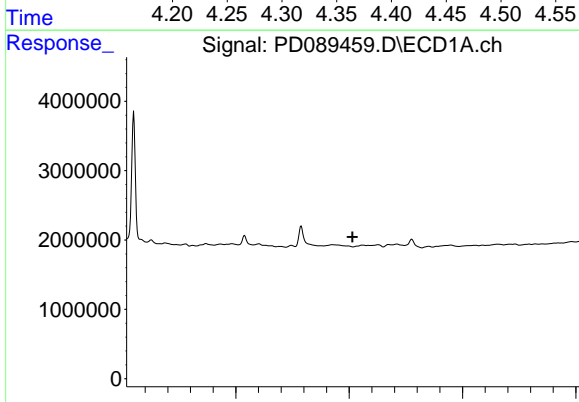


#5 Aldrin
 R.T.: 5.294 min
 Delta R.T.: 0.023 min
 Response: 145042
 Conc: 0.03 ng/ml

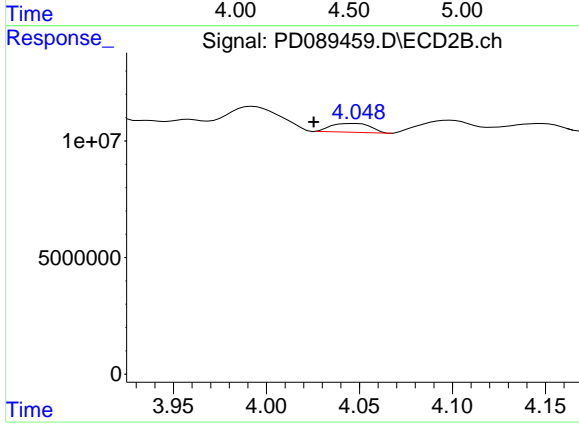
Instrument :
 ECD_D
 ClientSampleId :



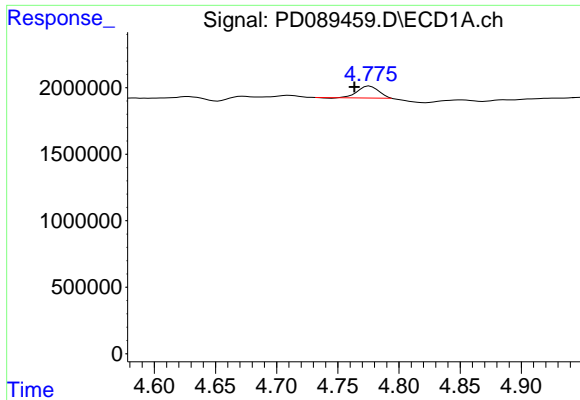
#5 Aldrin
 R.T.: 4.347 min
 Delta R.T.: -0.022 min
 Response: 5729675
 Conc: 0.24 ng/ml



#6 beta-BHC
 R.T.: 0.000 min
 Exp R.T. : 4.515 min
 Response: 0
 Conc: N.D.



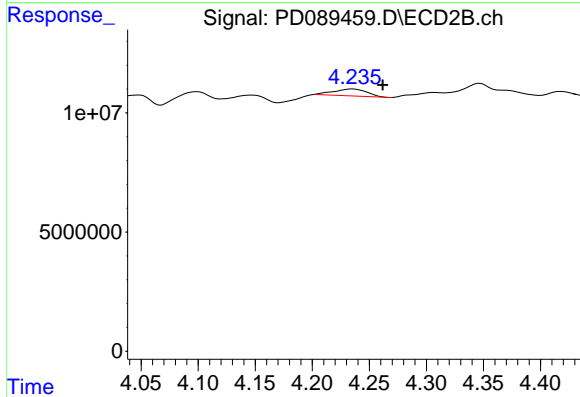
#6 beta-BHC
 R.T.: 4.048 min
 Delta R.T.: 0.023 min
 Response: 5598132
 Conc: 0.52 ng/ml



#7 delta-BHC

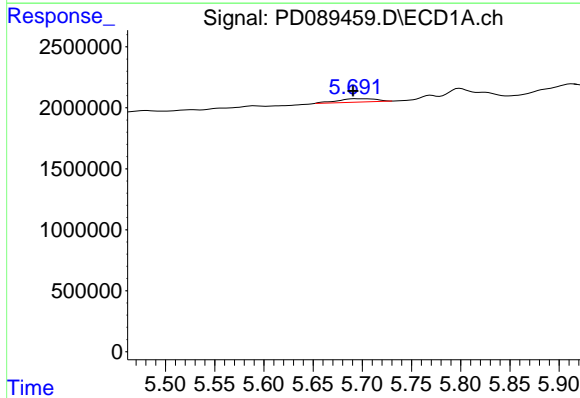
R.T.: 4.776 min
 Delta R.T.: 0.013 min
 Response: 1047822
 Conc: 0.20 ng/ml

Instrument :
 ECD_D
 ClientSampleId :



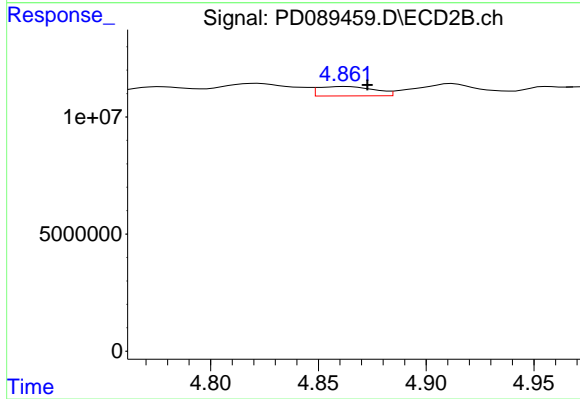
#7 delta-BHC

R.T.: 4.235 min
 Delta R.T.: -0.027 min
 Response: 5847792
 Conc: 0.24 ng/ml



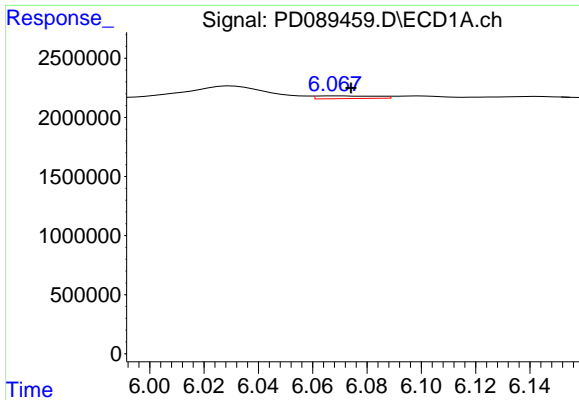
#8 Heptachlor epoxide

R.T.: 5.692 min
 Delta R.T.: 0.001 min
 Response: 753967
 Conc: 0.16 ng/ml



#8 Heptachlor epoxide

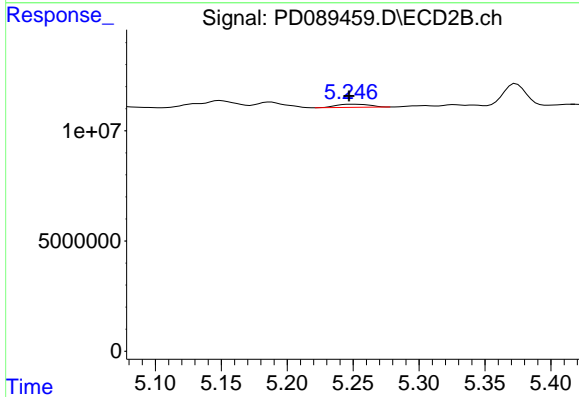
R.T.: 4.863 min
 Delta R.T.: -0.010 min
 Response: 7205719
 Conc: 0.33 ng/ml



#9 Endosulfan I

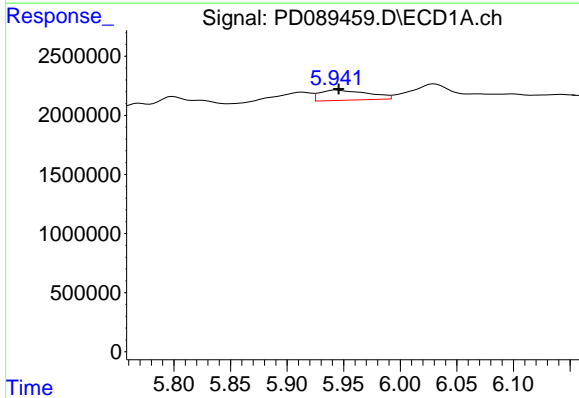
R.T.: 6.069 min
 Delta R.T.: -0.005 min
 Response: 359378
 Conc: 0.08 ng/ml

Instrument :
 ECD_D
 ClientSampleId :



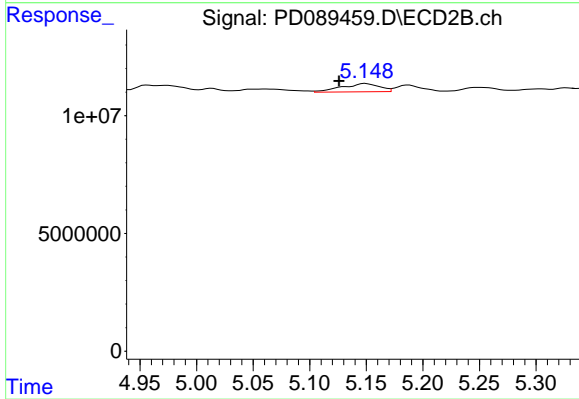
#9 Endosulfan I

R.T.: 5.250 min
 Delta R.T.: 0.003 min
 Response: 2501528
 Conc: 0.12 ng/ml



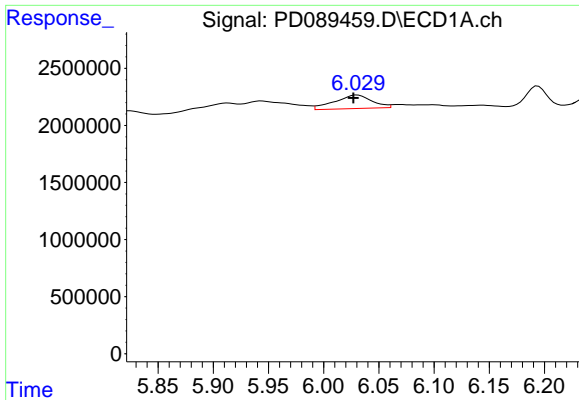
#10 gamma-Chlordane

R.T.: 5.943 min
 Delta R.T.: -0.002 min
 Response: 2578950
 Conc: 0.54 ng/ml



#10 gamma-Chlordane

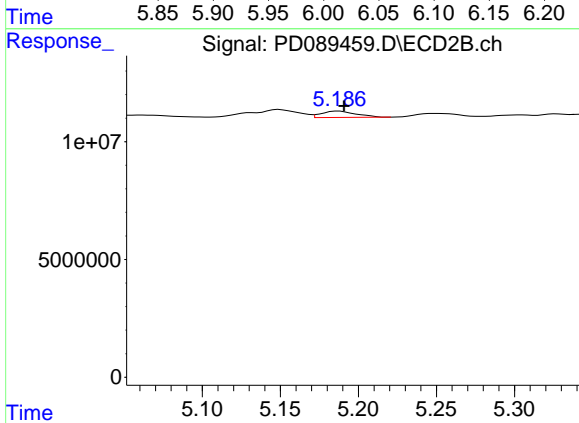
R.T.: 5.149 min
 Delta R.T.: 0.024 min
 Response: 8206980
 Conc: 0.34 ng/ml



#11 alpha-Chlordane

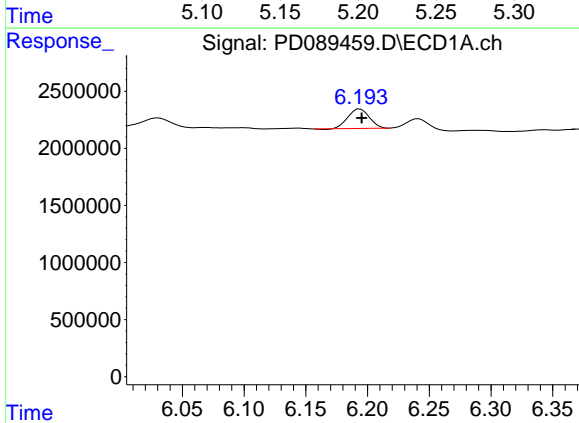
R.T.: 6.030 min
 Delta R.T.: 0.003 min
 Response: 2786798
 Conc: 0.58 ng/ml

Instrument :
 ECD_D
 ClientSampleId :



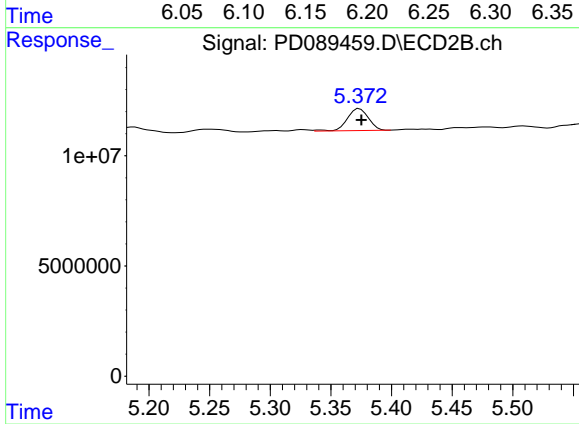
#11 alpha-Chlordane

R.T.: 5.187 min
 Delta R.T.: -0.003 min
 Response: 4176368
 Conc: 0.18 ng/ml



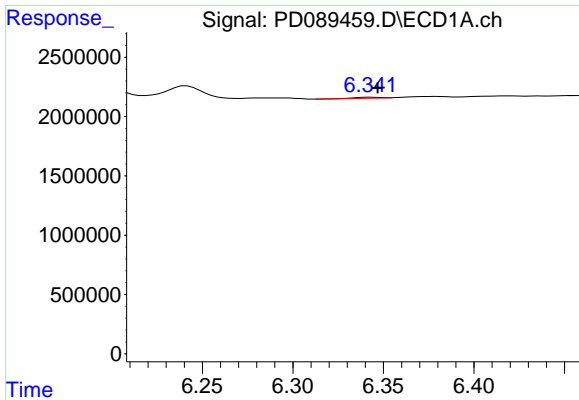
#12 4,4'-DDE

R.T.: 6.194 min
 Delta R.T.: -0.001 min
 Response: 2033789
 Conc: 0.47 ng/ml



#12 4,4'-DDE

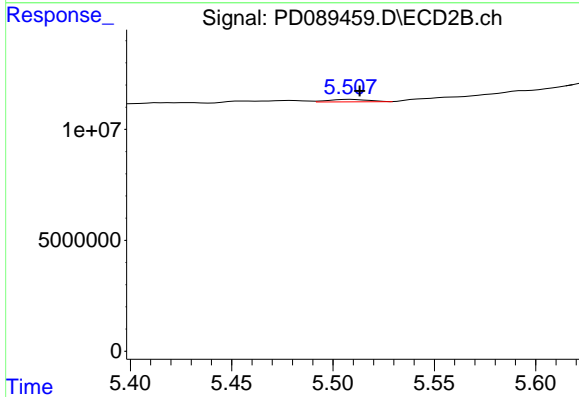
R.T.: 5.374 min
 Delta R.T.: -0.001 min
 Response: 12136546
 Conc: 0.53 ng/ml



#13 Dieldrin

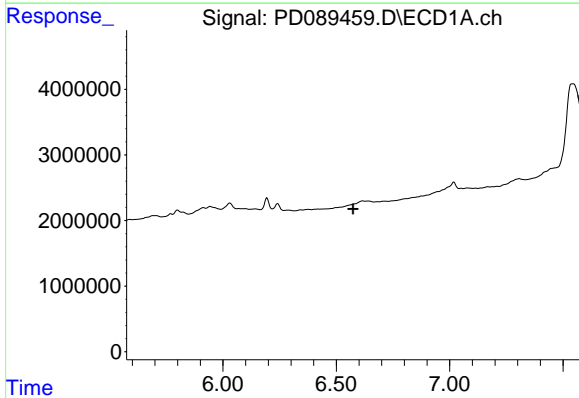
R.T.: 6.344 min
 Delta R.T.: -0.003 min
 Response: 77899
 Conc: 0.02 ng/ml

Instrument :
 ECD_D
 ClientSampleId :



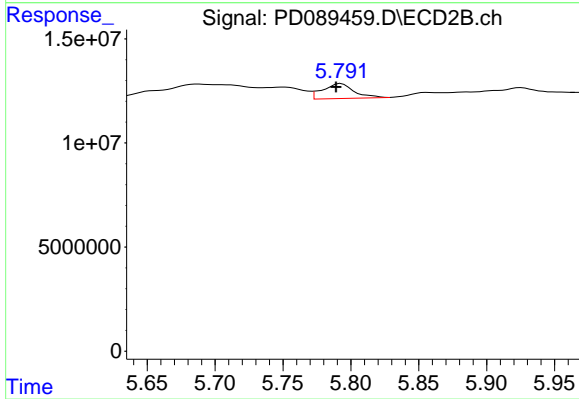
#13 Dieldrin

R.T.: 5.509 min
 Delta R.T.: -0.004 min
 Response: 1487315
 Conc: 0.06 ng/ml



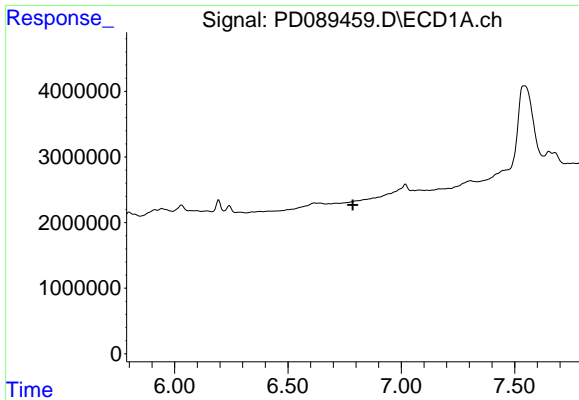
#14 Endrin

R.T.: 0.000 min
 Exp R.T. : 6.574 min
 Response: 0
 Conc: N.D.



#14 Endrin

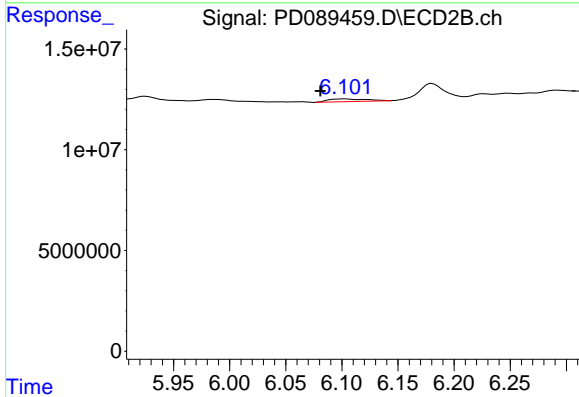
R.T.: 5.793 min
 Delta R.T.: 0.004 min
 Response: 11413486
 Conc: 0.53 ng/ml



#15 Endosulfan II

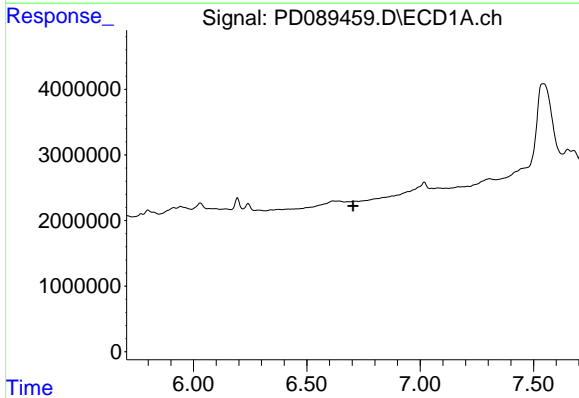
R.T.: 0.000 min
 Exp R.T.: 6.786 min
 Response: 0
 Conc: N.D.

Instrument :
 ECD_D
 ClientSampleId :



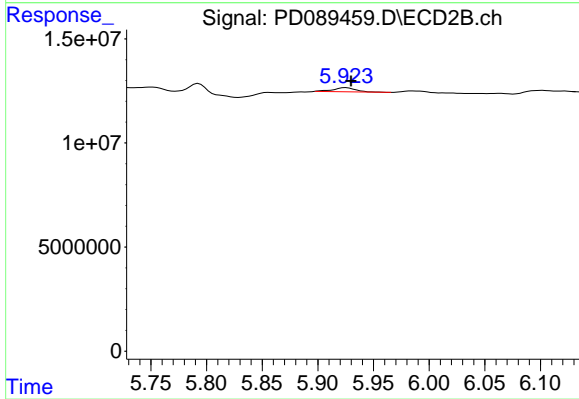
#15 Endosulfan II

R.T.: 6.102 min
 Delta R.T.: 0.022 min
 Response: 3151622
 Conc: 0.16 ng/ml



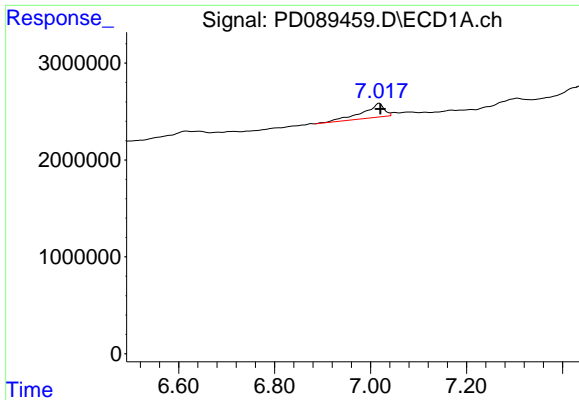
#16 4,4'-DDD

R.T.: 0.000 min
 Exp R.T.: 6.705 min
 Response: 0
 Conc: N.D.



#16 4,4'-DDD

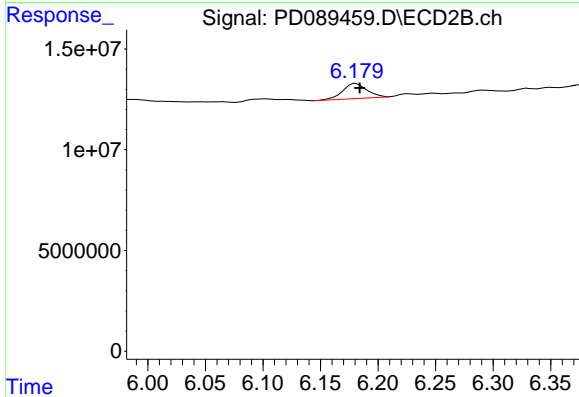
R.T.: 5.925 min
 Delta R.T.: -0.005 min
 Response: 2887195
 Conc: 0.15 ng/ml



#17 4,4'-DDT

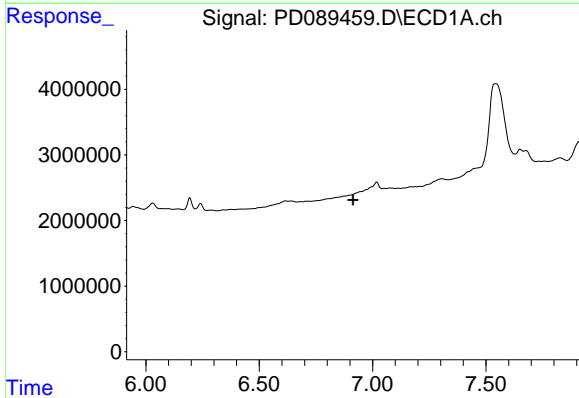
R.T.: 7.018 min
 Delta R.T.: -0.002 min
 Response: 4514650
 Conc: 1.19 ng/ml

Instrument :
 ECD_D
 ClientSampleId :



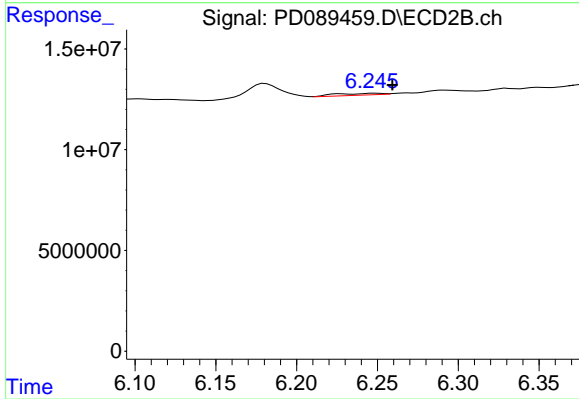
#17 4,4'-DDT

R.T.: 6.181 min
 Delta R.T.: -0.003 min
 Response: 11005119
 Conc: 0.54 ng/ml



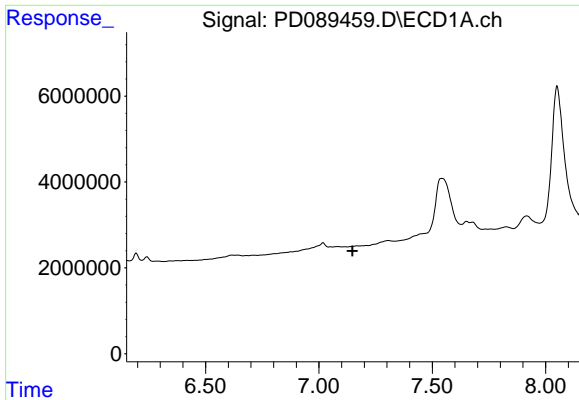
#18 Endrin aldehyde

R.T.: 0.000 min
 Exp R.T. : 6.915 min
 Response: 0
 Conc: N.D.



#18 Endrin aldehyde

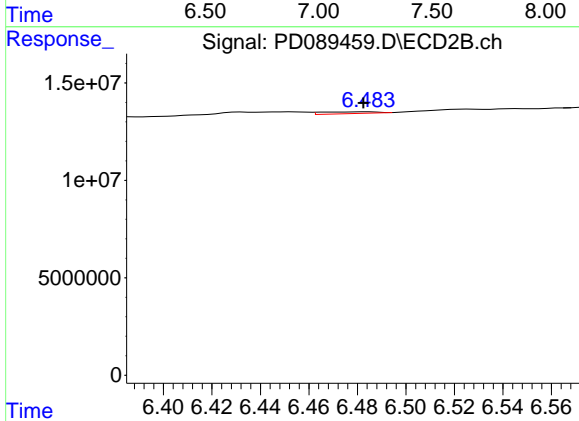
R.T.: 6.248 min
 Delta R.T.: -0.011 min
 Response: 1849241
 Conc: 0.12 ng/ml



#19 Endosulfan Sulfate

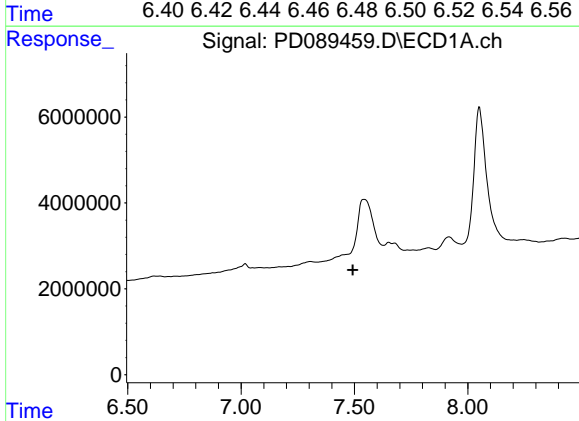
R.T.: 7.168 min
 Delta R.T.: 0.020 min
 Response: -62961
 Conc: N.D.

Instrument :
 ECD_D
 ClientSampleId :



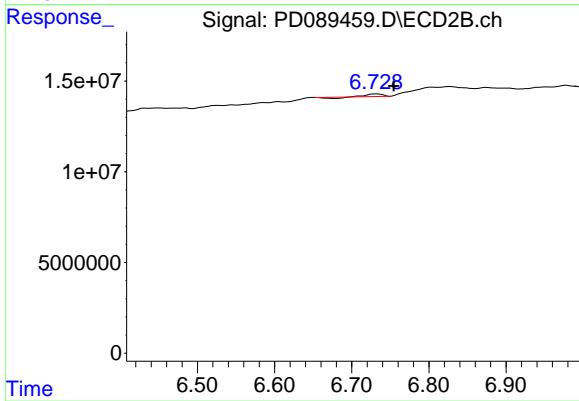
#19 Endosulfan Sulfate

R.T.: 6.484 min
 Delta R.T.: 0.002 min
 Response: 1382419
 Conc: 0.07 ng/ml



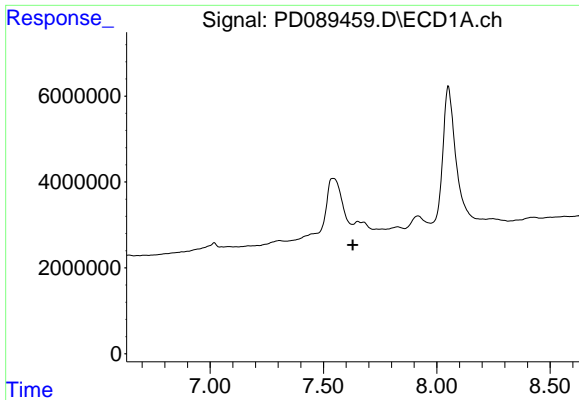
#20 Methoxychlor

R.T.: 0.000 min
 Exp R.T. : 7.493 min
 Response: 0
 Conc: N.D.



#20 Methoxychlor

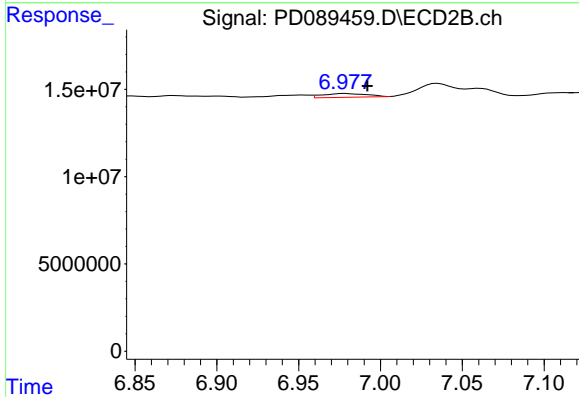
R.T.: 6.731 min
 Delta R.T.: -0.023 min
 Response: 1227111
 Conc: 0.11 ng/ml



#21 Endrin ketone

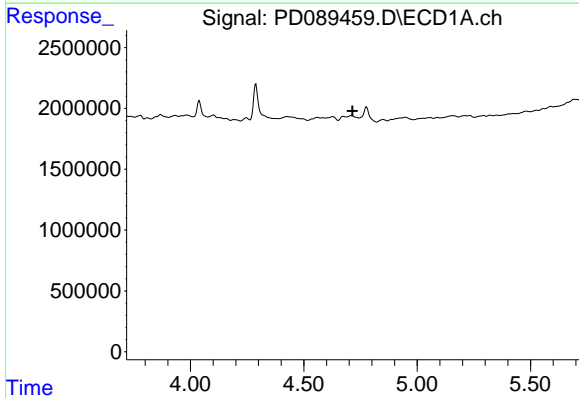
R.T.: 7.651 min
 Delta R.T.: 0.022 min
 Response: -803018
 Conc: N.D.

Instrument :
 ECD_D
 ClientSampleId :



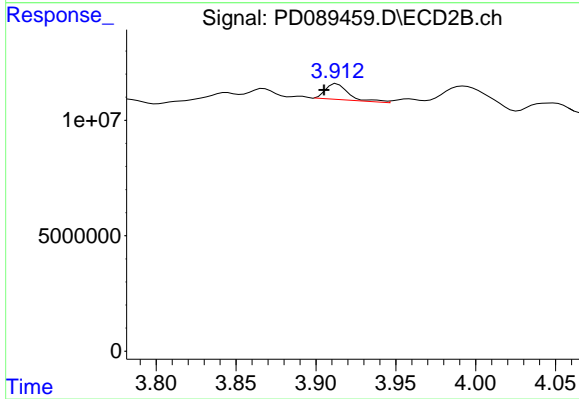
#21 Endrin ketone

R.T.: 6.978 min
 Delta R.T.: -0.014 min
 Response: 4078459
 Conc: 0.19 ng/ml



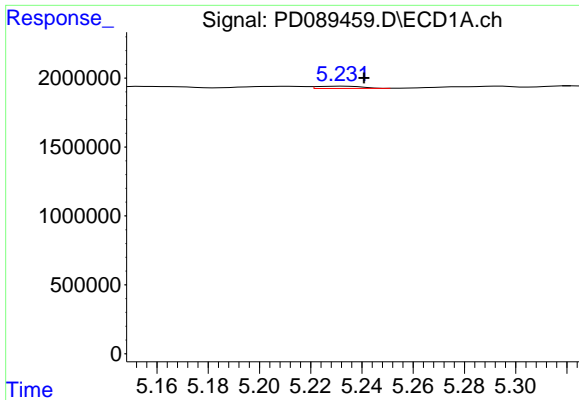
#23 Chlordane-1

R.T.: 0.000 min
 Exp R.T. : 4.715 min
 Response: 0
 Conc: N.D.



#23 Chlordane-1

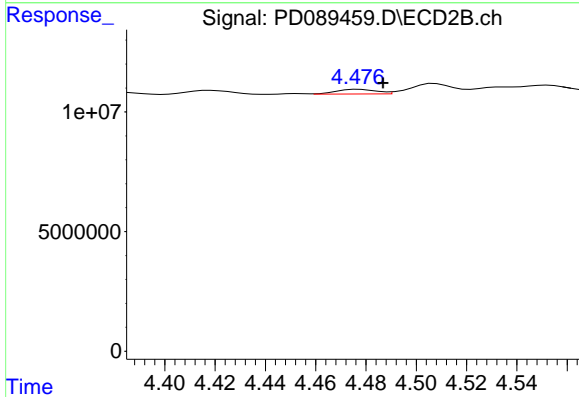
R.T.: 3.913 min
 Delta R.T.: 0.008 min
 Response: 6962418
 Conc: 7.47 ng/ml



#24 Chlordane-2

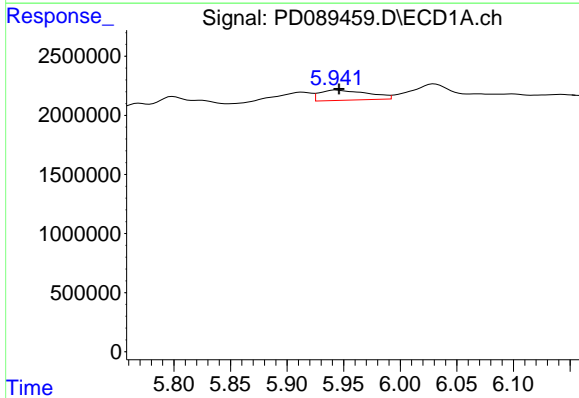
R.T.: 5.233 min
 Delta R.T.: -0.008 min
 Response: 201262
 Conc: 0.92 ng/ml

Instrument :
 ECD_D
 ClientSampleId :



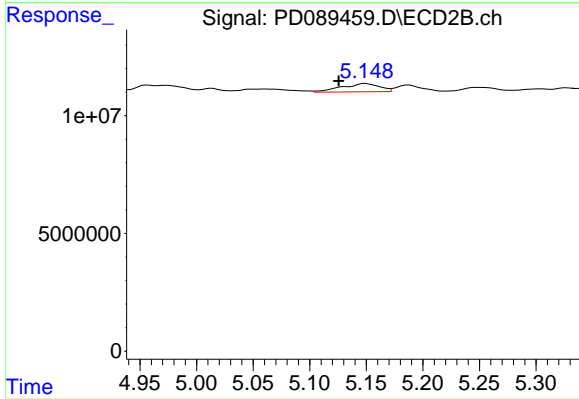
#24 Chlordane-2

R.T.: 4.477 min
 Delta R.T.: -0.010 min
 Response: 2190547
 Conc: 2.30 ng/ml



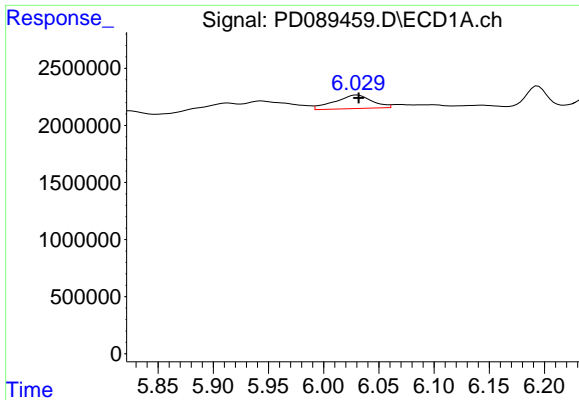
#25 Chlordane-3

R.T.: 5.943 min
 Delta R.T.: -0.002 min
 Response: 2578950
 Conc: 2.99 ng/ml



#25 Chlordane-3

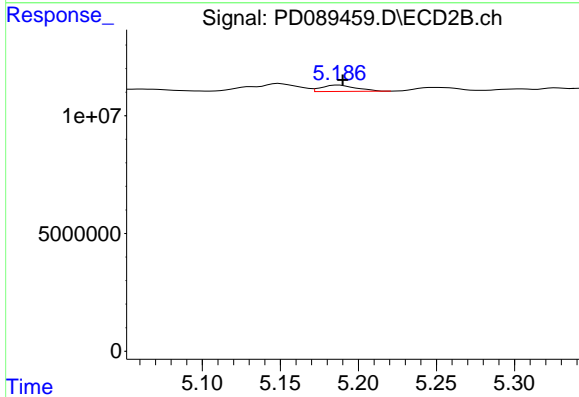
R.T.: 5.149 min
 Delta R.T.: 0.024 min
 Response: 8206980
 Conc: 2.76 ng/ml



#26 Chlordane-4

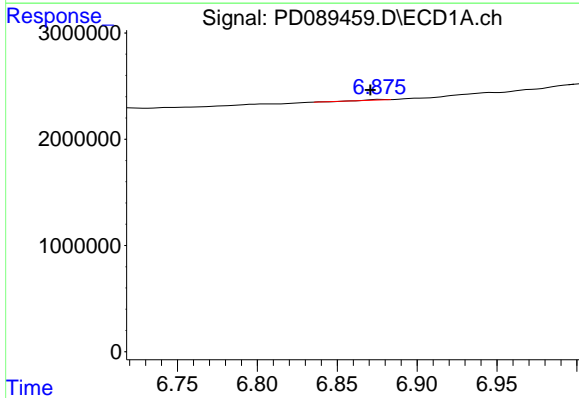
R.T.: 6.030 min
 Delta R.T.: -0.002 min
 Response: 2786798
 Conc: 2.65 ng/ml

Instrument :
 ECD_D
 ClientSampleId :



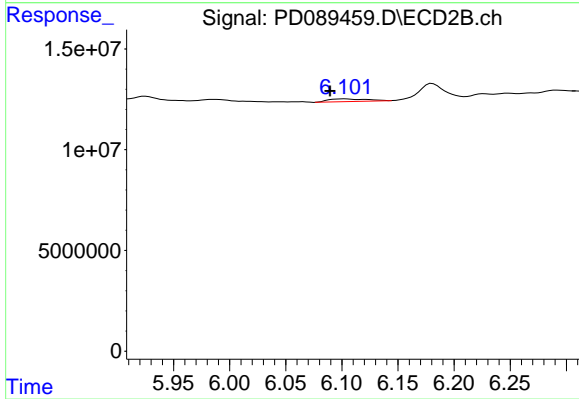
#26 Chlordane-4

R.T.: 5.187 min
 Delta R.T.: -0.003 min
 Response: 4176368
 Conc: 1.67 ng/ml



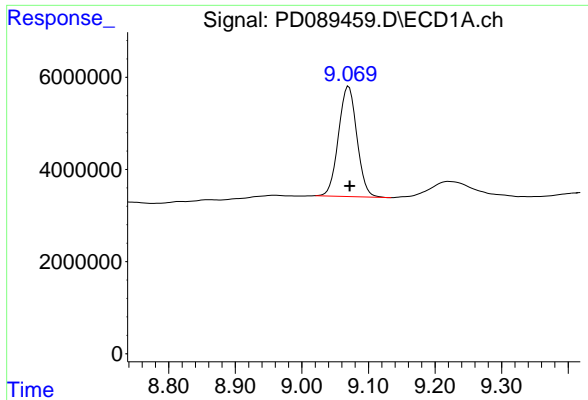
#27 Chlordane-5

R.T.: 6.878 min
 Delta R.T.: 0.007 min
 Response: 15326
 Conc: 0.08 ng/ml



#27 Chlordane-5

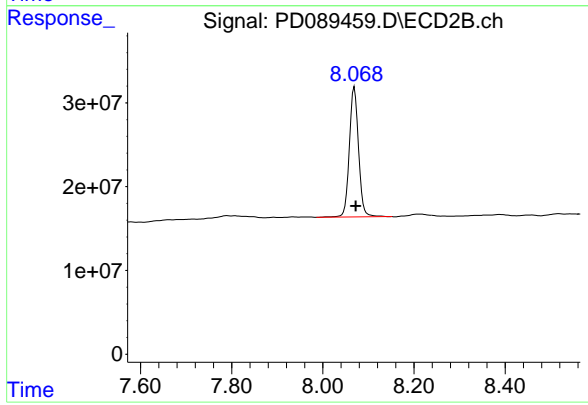
R.T.: 6.102 min
 Delta R.T.: 0.013 min
 Response: 3151622
 Conc: 2.78 ng/ml



#28 Decachlorobiphenyl

R.T.: 9.070 min
Delta R.T.: -0.002 min
Response: 45978265
Conc: 11.71 ng/ml

Instrument :
ECD_D
ClientSampleId :



#28 Decachlorobiphenyl

R.T.: 8.069 min
Delta R.T.: -0.003 min
Response: 217881919
Conc: 11.02 ng/ml