

Data Path : Z:\pestpcbsrv\HPCHEM1\ECD_D\Data\PD071125\
 Data File : PD089460.D
 Signal(s) : Signal #1: ECD1A.ch Signal #2: ECD2B.ch
 Acq On : 11 Jul 2025 14:36
 Operator : AR\AJ
 Sample : Q2564-03
 Misc :
 ALS Vial : 12 Sample Multiplier: 1

Instrument :
 ECD_D
 ClientSampleId :

Integration File signal 1: autoint1.e
 Integration File signal 2: autoint2.e
 Quant Time: Jul 11 22:52:33 2025
 Quant Method : Z:\pestpcbsrv\HPCHEM1\ECD_D\Method\PD061825.M
 Quant Title : GC Extractables
 QLast Update : Wed Jun 18 05:39:05 2025
 Response via : Initial Calibration
 Integrator: ChemStation

Volume Inj. : 1 µl
 Signal #1 Phase : ZB-MR2 Signal #2 Phase: ZB-MR2
 Signal #1 Info : 30M x 0.32mm x0.5 Signal #2 Info : 30M x 0.32mm x 0.25µm

Compound	RT#1	RT#2	Resp#1	Resp#2	ng/ml	ng/ml

System Monitoring Compounds						
1) SA Tetrachlo...	3.550	2.882	20221290	164.3E6	7.087	9.694 #
28) SA Decachlor...	9.073	8.069	43613683	211.7E6	11.104	10.709
Target Compounds						
2) A alpha-BHC	0.000	3.416f	0	12553840	N.D.	0.468 #
3) MA gamma-BHC...	0.000	3.734	0	26304963	N.D.	1.063 #
4) MA Heptachlor	4.944	4.096	20158808	5143718	3.698	0.205 #
5) MB Aldrin	5.256	4.373	42097569	18903840	7.924	0.781 #
6) B beta-BHC	4.493f	0.000	2717307	0	1.231	N.D. #
8) B Heptachlo...	5.681	4.864	63165395	18090302	13.094	0.826 #
9) A Endosulfan I	6.102f	5.244	20154363	1027.6E6	4.471	49.305 #
10) B gamma-Chl...	5.928f	5.121	27907718	27051187	5.829	1.131 #
11) B alpha-Chl...	6.028	5.197	29443467	20147290	6.085	0.880 #
12) B 4,4'-DDE	6.172f	5.375	193.8E6	93009450	44.443	4.059 #
13) MA Dieldrin	0.000	5.512	0	73806533	N.D.	3.180 #
14) MA Endrin	6.565	5.790	8361264	46177934	2.027	2.127
15) B Endosulfa...	6.763f	6.065f	33124097	57816166	8.206	2.863 #
16) A 4,4'-DDD	6.688f	5.933	8856892	64871817	2.581	3.391 #
17) MA 4,4'-DDT	7.021	6.188	27545069	188.8E6	7.271	9.312 #
18) B Endrin al...	6.943f	6.243f	5738242	1863.0E6	1.873	121.677 #
19) B Endosulfa...	0.000	6.492	0	130.9E6	N.D.	6.674 #
20) A Methoxychlor	7.464f	6.737f	11386789	16924505	5.635	1.572 #
21) B Endrin ke...	7.613f	6.989	5753776	85560175	1.413	3.961 #
22) Mirex	8.084f	7.170f	7564461	204.5E6	2.488	12.261 #
23) Chlordane-1	4.728	3.884f	9249753	104.8E6	43.218	112.451 #
24) Chlordane-2	5.256	4.475	42097569	18049667	192.831	18.967 #
25) Chlordane-3	5.928	5.121	27907718	27051187	32.357	9.108 #
26) Chlordane-4	6.028	5.197	29443467	20147290	28.023	8.037 #
27) Chlordane-5	6.858	6.103	208904	19386347	1.143	17.131 #

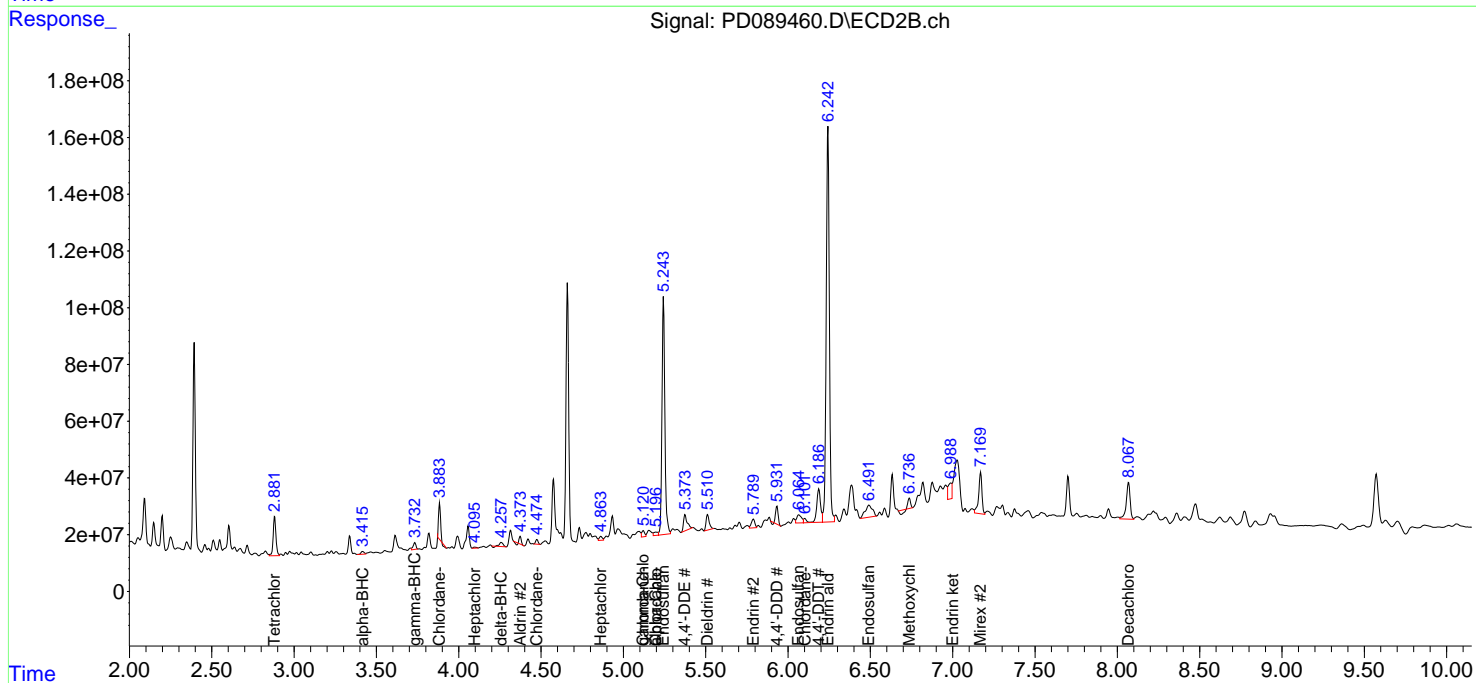
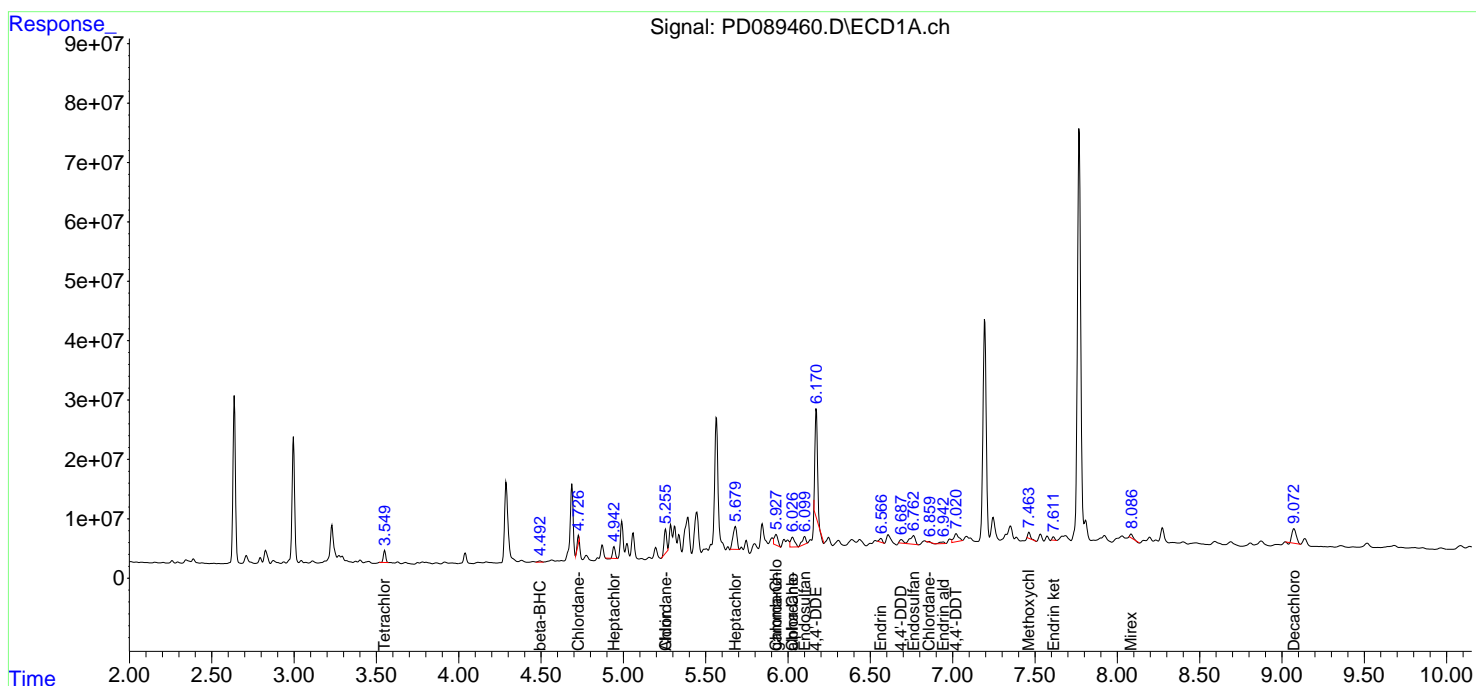
(f)=RT Delta > 1/2 Window (#)=Amounts differ by > 25% (m)=manual int.

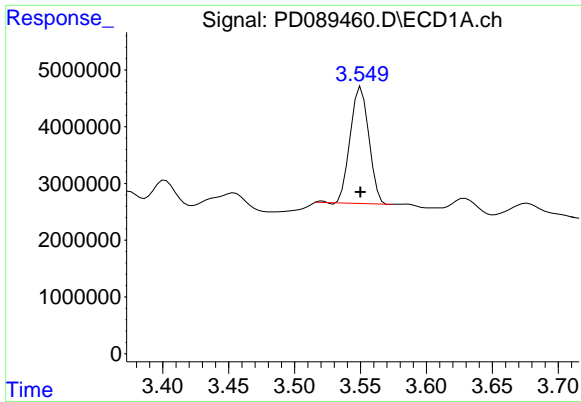
Data Path : Z:\pestpcbsrv\HPCHEM1\ECD_D\Data\PD071125\
 Data File : PD089460.D
 Signal(s) : Signal #1: ECD1A.ch Signal #2: ECD2B.ch
 Acq On : 11 Jul 2025 14:36
 Operator : AR\AJ
 Sample : Q2564-03
 Misc :
 ALS Vial : 12 Sample Multiplier: 1

Instrument :
 ECD_D
 ClientSampleId :

Integration File signal 1: autoint1.e
 Integration File signal 2: autoint2.e
 Quant Time: Jul 11 22:52:33 2025
 Quant Method : Z:\pestpcbsrv\HPCHEM1\ECD_D\Method\PD061825.M
 Quant Title : GC Extractables
 QLast Update : Wed Jun 18 05:39:05 2025
 Response via : Initial Calibration
 Integrator: ChemStation

Volume Inj. : 1 µl
 Signal #1 Phase : ZB-MR1 Signal #2 Phase: ZB-MR2
 Signal #1 Info : 30M x 0.32mm x0.5 Signal #2 Info : 30M x 0.32mm x 0.25µm

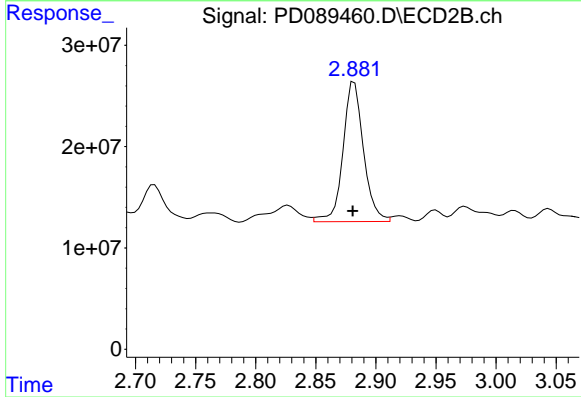




#1 Tetrachloro-m-xylene

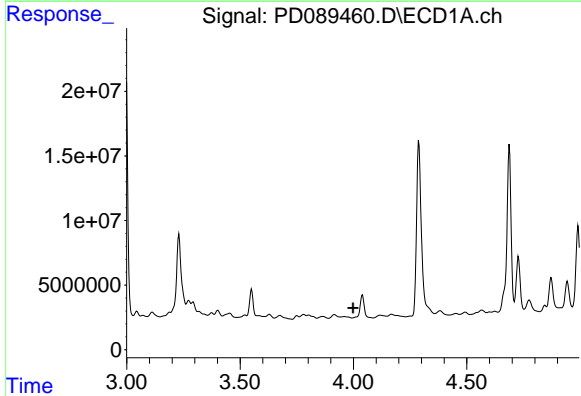
R.T.: 3.550 min
 Delta R.T.: 0.000 min
 Response: 20221290
 Conc: 7.09 ng/ml

Instrument :
 ECD_D
 ClientSampleId :



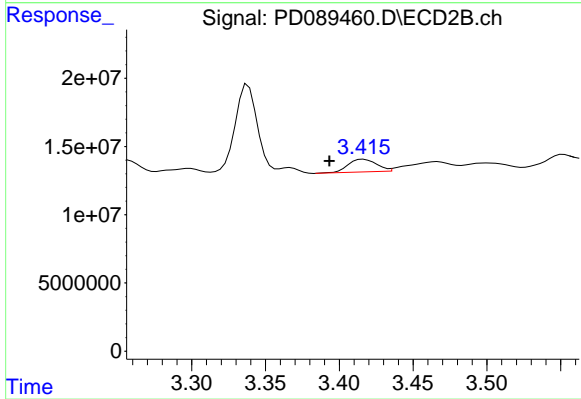
#1 Tetrachloro-m-xylene

R.T.: 2.882 min
 Delta R.T.: 0.001 min
 Response: 164349901
 Conc: 9.69 ng/ml



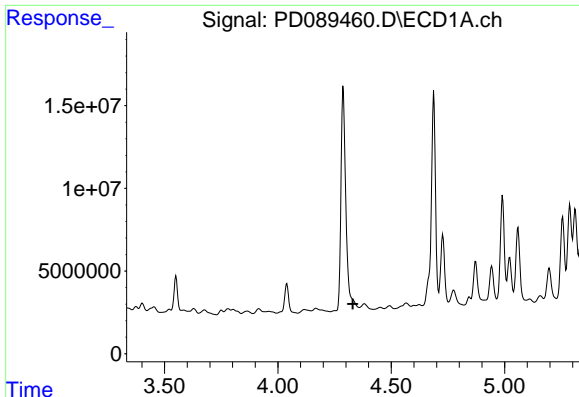
#2 alpha-BHC

R.T.: 0.000 min
 Exp R.T. : 3.999 min
 Response: 0
 Conc: N.D.



#2 alpha-BHC

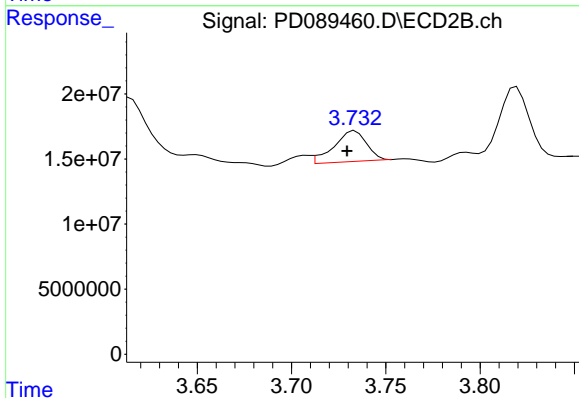
R.T.: 3.416 min
 Delta R.T.: 0.023 min
 Response: 12553840
 Conc: 0.47 ng/ml



#3 gamma-BHC (Lindane)

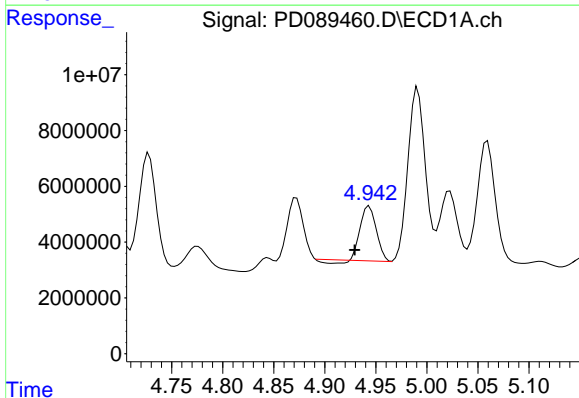
R.T.: 0.000 min
 Exp R.T.: 4.330 min
 Response: 0
 Conc: N.D.

Instrument :
 ECD_D
 ClientSampleId :



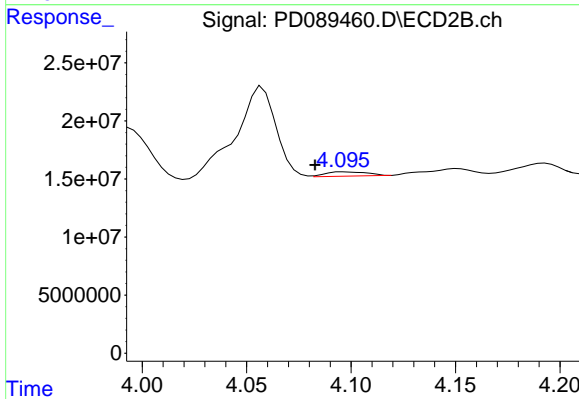
#3 gamma-BHC (Lindane)

R.T.: 3.734 min
 Delta R.T.: 0.004 min
 Response: 26304963
 Conc: 1.06 ng/ml



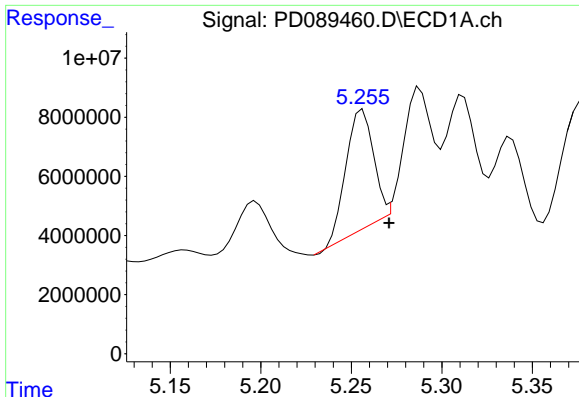
#4 Heptachlor

R.T.: 4.944 min
 Delta R.T.: 0.014 min
 Response: 20158808
 Conc: 3.70 ng/ml



#4 Heptachlor

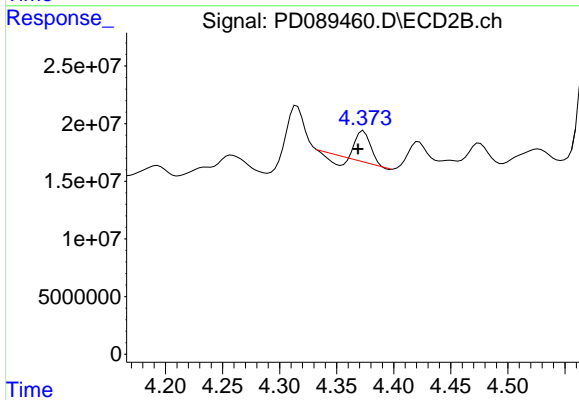
R.T.: 4.096 min
 Delta R.T.: 0.014 min
 Response: 5143718
 Conc: 0.21 ng/ml



#5 Aldrin

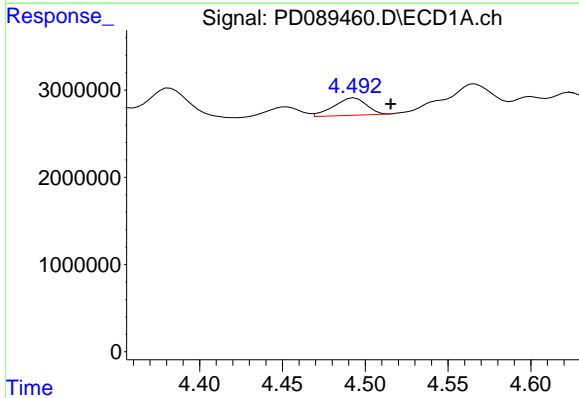
R.T.: 5.256 min
 Delta R.T.: -0.015 min
 Response: 42097569
 Conc: 7.92 ng/ml

Instrument :
 ECD_D
 ClientSampleId :



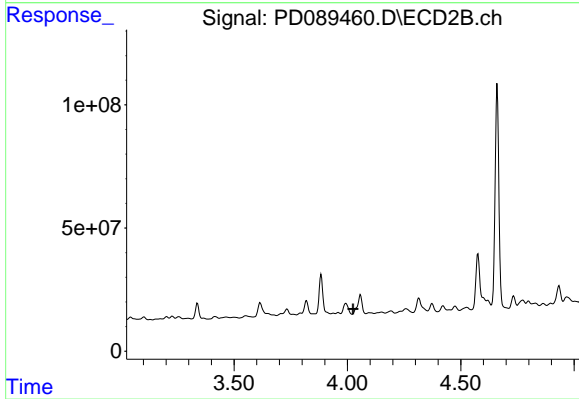
#5 Aldrin

R.T.: 4.373 min
 Delta R.T.: 0.005 min
 Response: 18903840
 Conc: 0.78 ng/ml



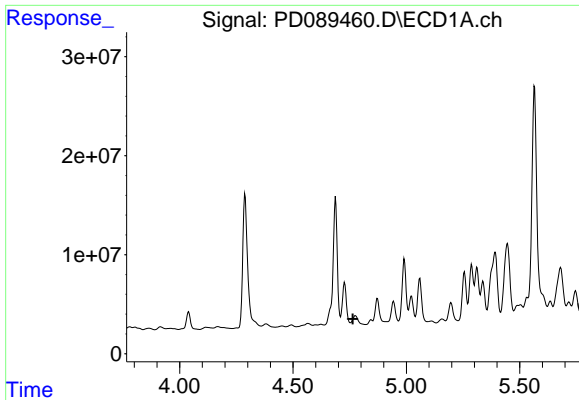
#6 beta-BHC

R.T.: 4.493 min
 Delta R.T.: -0.022 min
 Response: 2717307
 Conc: 1.23 ng/ml



#6 beta-BHC

R.T.: 0.000 min
 Exp R.T. : 4.025 min
 Response: 0
 Conc: N.D.

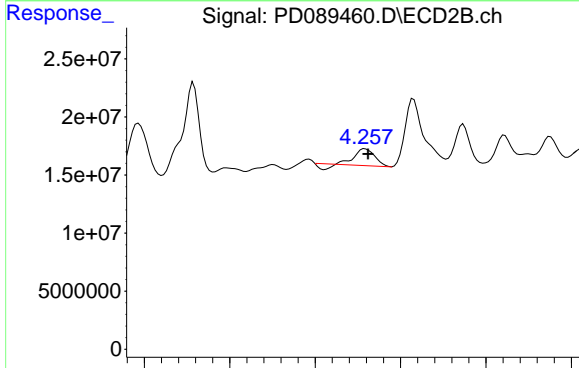


#7 delta-BHC

R.T.: 4.776 min
 Delta R.T.: 0.012 min
 Response: -10545006
 Conc: N.D.

Instrument :
 ECD_D
 ClientSampleId :

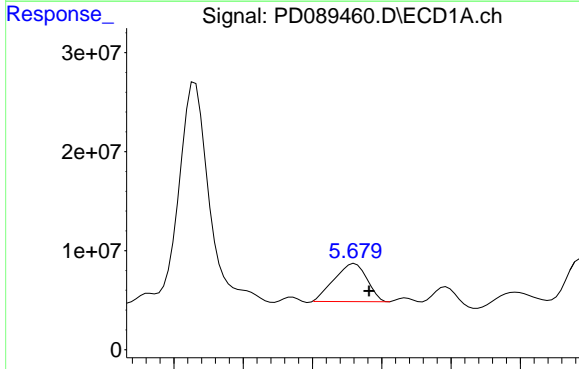
Time



#7 delta-BHC

R.T.: 4.258 min
 Delta R.T.: -0.004 min
 Response: 20349055
 Conc: 0.82 ng/ml

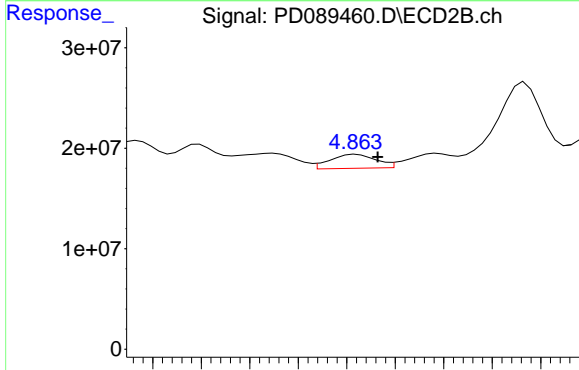
Time



#8 Heptachlor epoxide

R.T.: 5.681 min
 Delta R.T.: -0.010 min
 Response: 63165395
 Conc: 13.09 ng/ml

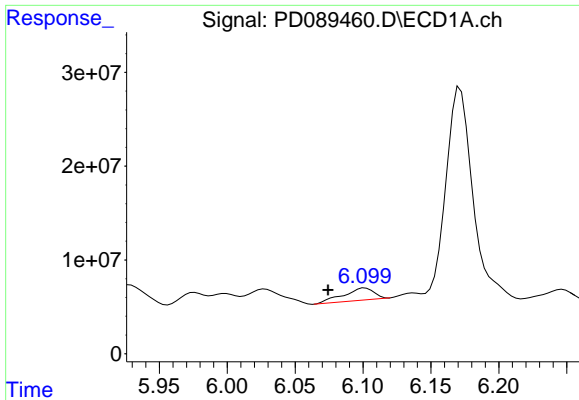
Time



#8 Heptachlor epoxide

R.T.: 4.864 min
 Delta R.T.: -0.009 min
 Response: 18090302
 Conc: 0.83 ng/ml

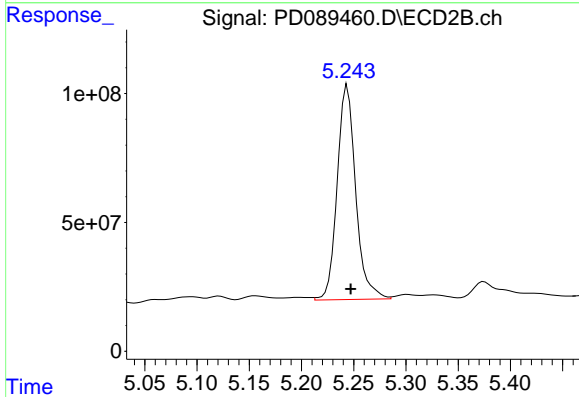
Time



#9 Endosulfan I

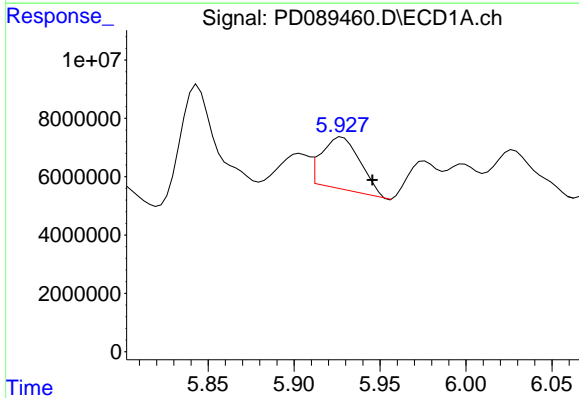
R.T.: 6.102 min
 Delta R.T.: 0.027 min
 Response: 20154363
 Conc: 4.47 ng/ml

Instrument :
 ECD_D
 ClientSampleId :



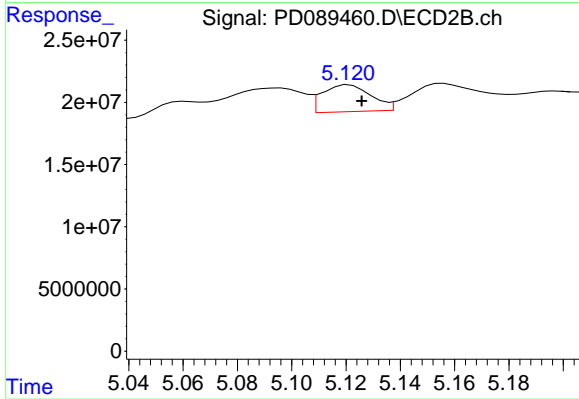
#9 Endosulfan I

R.T.: 5.244 min
 Delta R.T.: -0.003 min
 Response: 1027634406
 Conc: 49.30 ng/ml



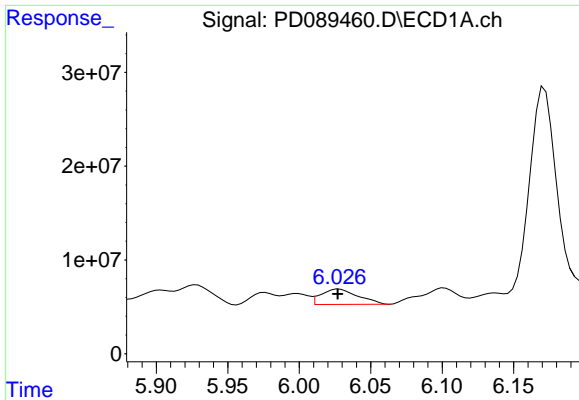
#10 gamma-Chlordane

R.T.: 5.928 min
 Delta R.T.: -0.018 min
 Response: 27907718
 Conc: 5.83 ng/ml



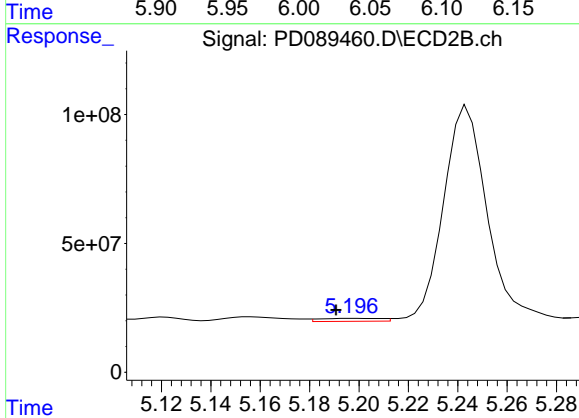
#10 gamma-Chlordane

R.T.: 5.121 min
 Delta R.T.: -0.005 min
 Response: 27051187
 Conc: 1.13 ng/ml

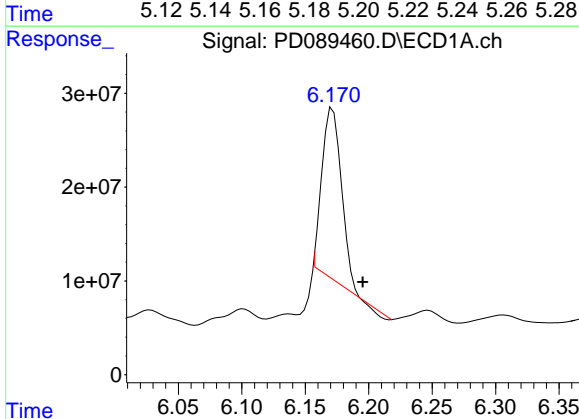


#11 alpha-Chlordane
 R.T.: 6.028 min
 Delta R.T.: 0.000 min
 Response: 29443467
 Conc: 6.09 ng/ml

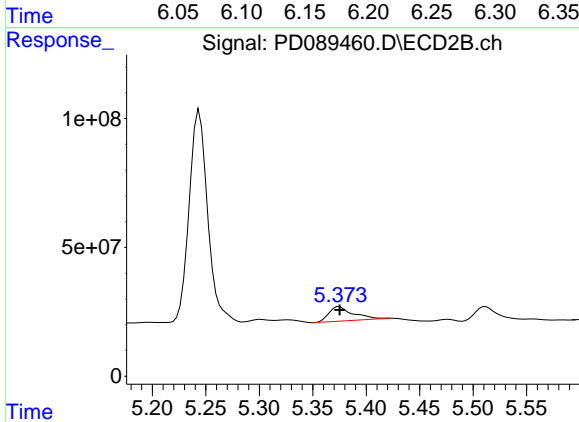
Instrument :
 ECD_D
 ClientSampleId :



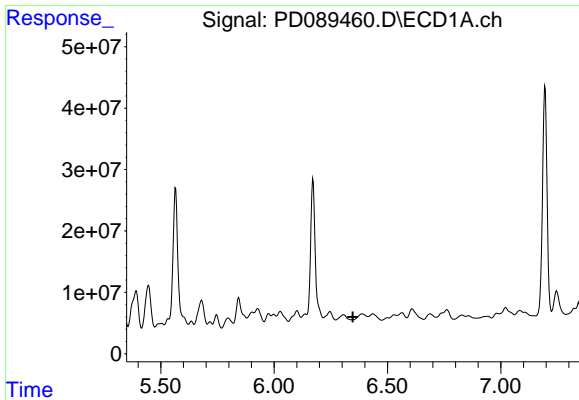
#11 alpha-Chlordane
 R.T.: 5.197 min
 Delta R.T.: 0.007 min
 Response: 20147290
 Conc: 0.88 ng/ml



#12 4,4'-DDE
 R.T.: 6.172 min
 Delta R.T.: -0.024 min
 Response: 193816355
 Conc: 44.44 ng/ml



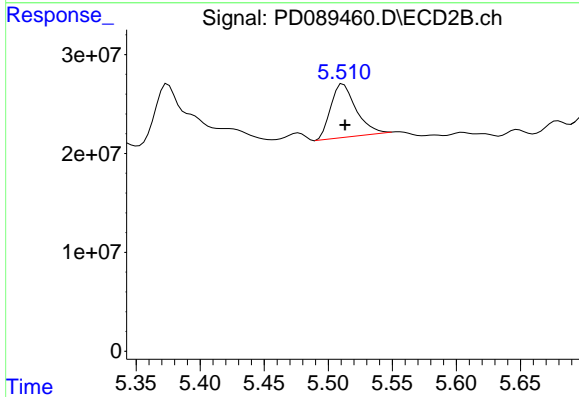
#12 4,4'-DDE
 R.T.: 5.375 min
 Delta R.T.: 0.000 min
 Response: 93009450
 Conc: 4.06 ng/ml



#13 Dieldrin

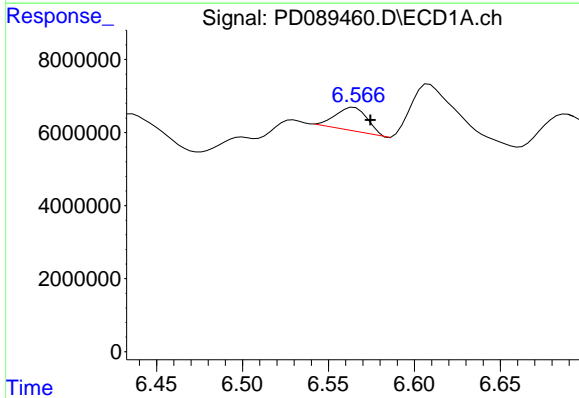
R.T.: 0.000 min
 Exp R.T.: 6.347 min
 Response: 0
 Conc: N.D.

Instrument :
 ECD_D
 ClientSampleId :



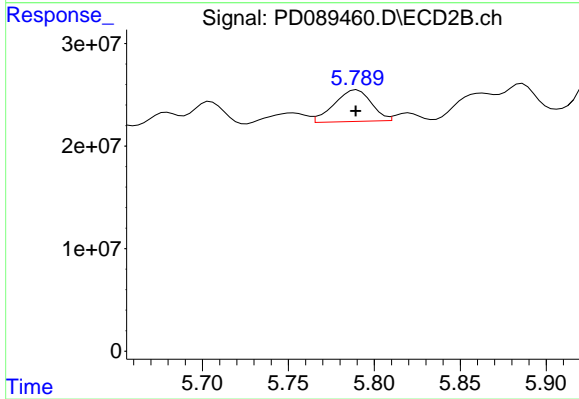
#13 Dieldrin

R.T.: 5.512 min
 Delta R.T.: -0.001 min
 Response: 73806533
 Conc: 3.18 ng/ml



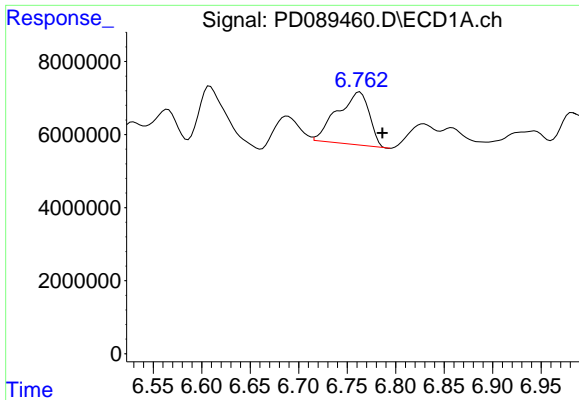
#14 Endrin

R.T.: 6.565 min
 Delta R.T.: -0.009 min
 Response: 8361264
 Conc: 2.03 ng/ml



#14 Endrin

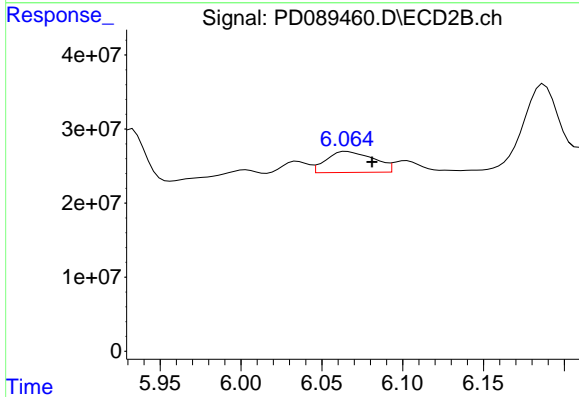
R.T.: 5.790 min
 Delta R.T.: 0.000 min
 Response: 46177934
 Conc: 2.13 ng/ml



#15 Endosulfan II

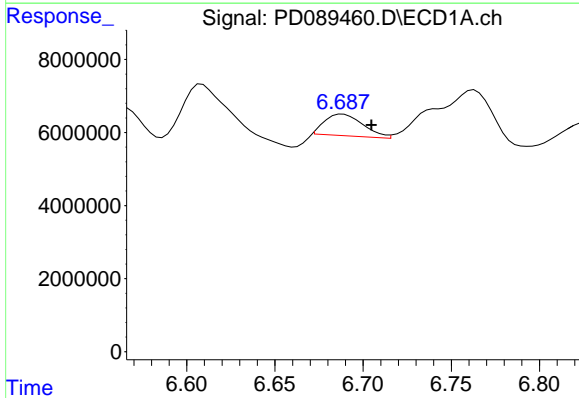
R.T.: 6.763 min
 Delta R.T.: -0.023 min
 Response: 33124097
 Conc: 8.21 ng/ml

Instrument :
 ECD_D
 ClientSampleId :



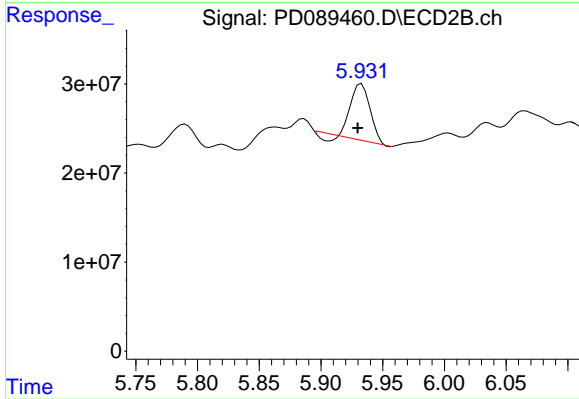
#15 Endosulfan II

R.T.: 6.065 min
 Delta R.T.: -0.016 min
 Response: 57816166
 Conc: 2.86 ng/ml



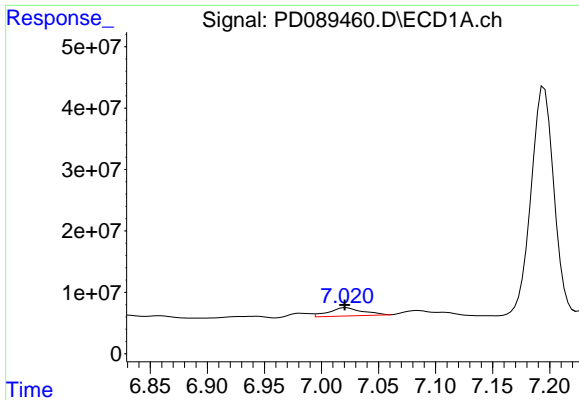
#16 4,4'-DDD

R.T.: 6.688 min
 Delta R.T.: -0.016 min
 Response: 8856892
 Conc: 2.58 ng/ml



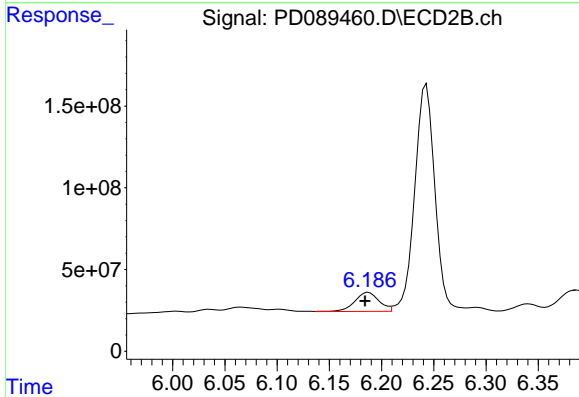
#16 4,4'-DDD

R.T.: 5.933 min
 Delta R.T.: 0.003 min
 Response: 64871817
 Conc: 3.39 ng/ml

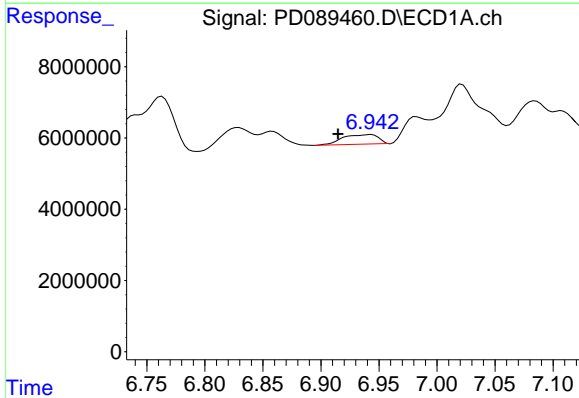


#17 4,4'-DDT
 R.T.: 7.021 min
 Delta R.T.: 0.001 min
 Response: 27545069
 Conc: 7.27 ng/ml

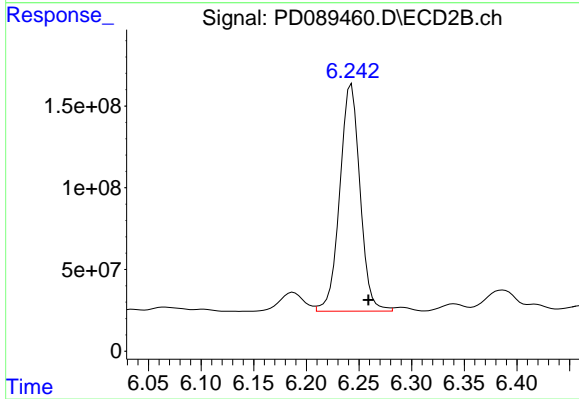
Instrument :
 ECD_D
 ClientSampleId :



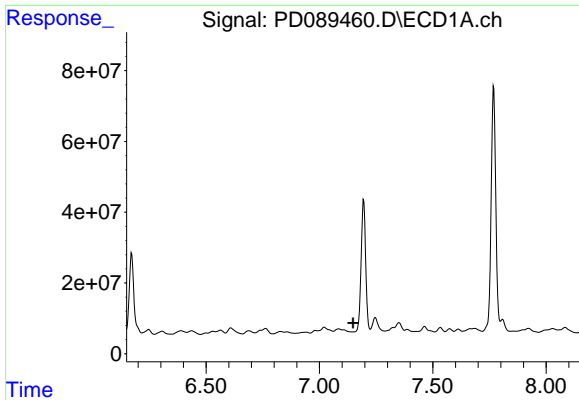
#17 4,4'-DDT
 R.T.: 6.188 min
 Delta R.T.: 0.003 min
 Response: 188846103
 Conc: 9.31 ng/ml



#18 Endrin aldehyde
 R.T.: 6.943 min
 Delta R.T.: 0.028 min
 Response: 5738242
 Conc: 1.87 ng/ml

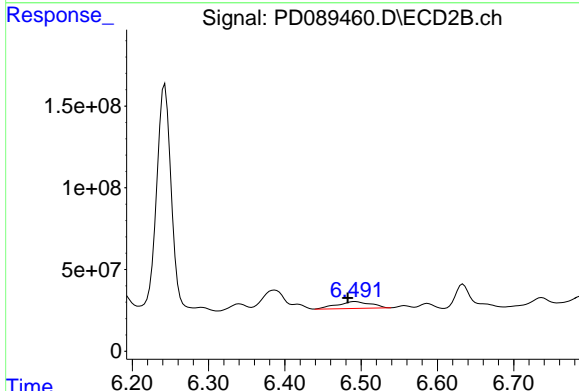


#18 Endrin aldehyde
 R.T.: 6.243 min
 Delta R.T.: -0.016 min
 Response: 1863035965
 Conc: 121.68 ng/ml

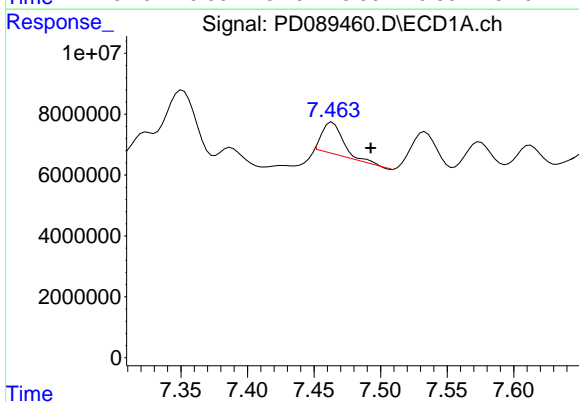


#19 Endosulfan Sulfate
 R.T.: 0.000 min
 Exp R.T.: 7.148 min
 Response: 0
 Conc: N.D.

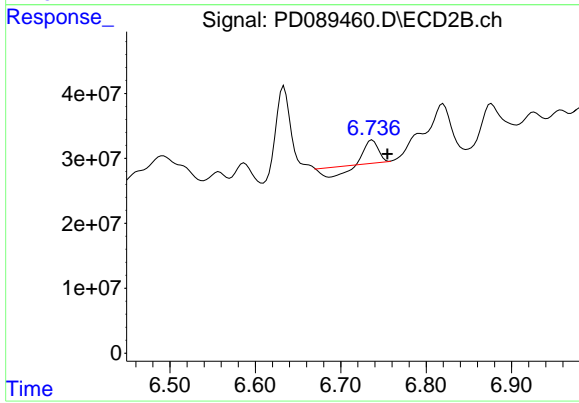
Instrument :
 ECD_D
 ClientSampleId :



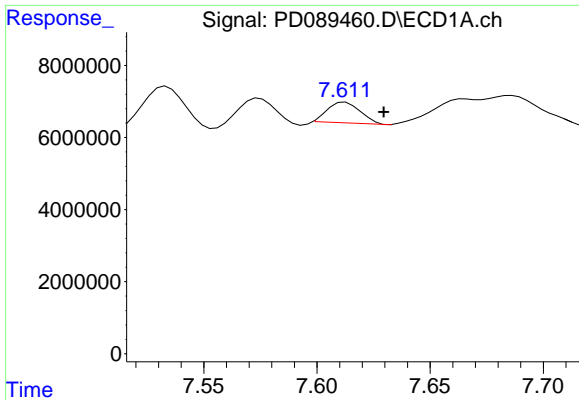
#19 Endosulfan Sulfate
 R.T.: 6.492 min
 Delta R.T.: 0.010 min
 Response: 130948772
 Conc: 6.67 ng/ml



#20 Methoxychlor
 R.T.: 7.464 min
 Delta R.T.: -0.029 min
 Response: 11386789
 Conc: 5.64 ng/ml



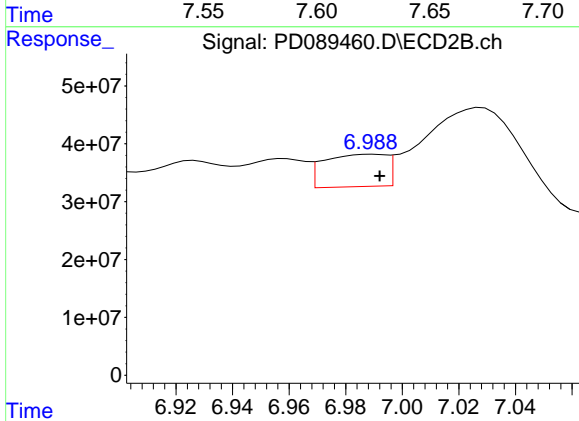
#20 Methoxychlor
 R.T.: 6.737 min
 Delta R.T.: -0.018 min
 Response: 16924505
 Conc: 1.57 ng/ml



#21 Endrin ketone

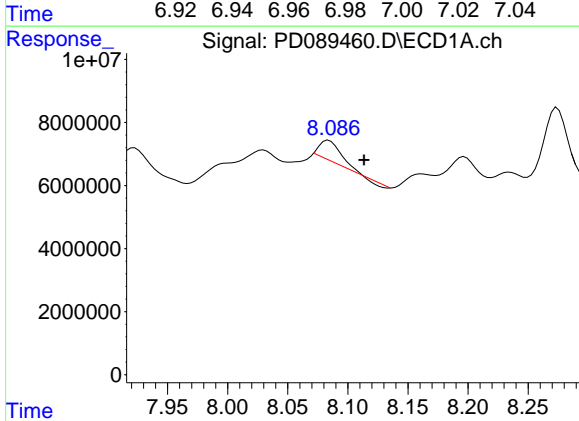
R.T.: 7.613 min
 Delta R.T.: -0.017 min
 Response: 5753776
 Conc: 1.41 ng/ml

Instrument :
 ECD_D
 ClientSampleId :



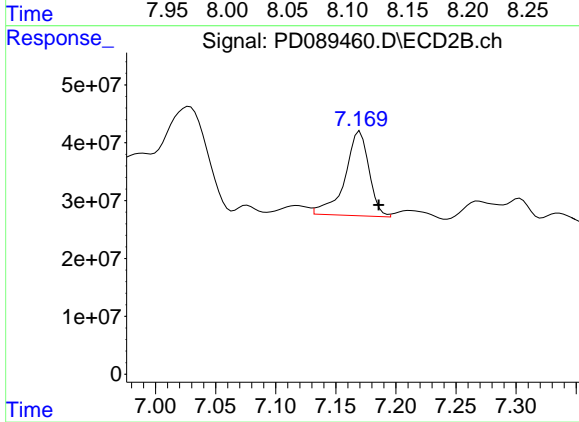
#21 Endrin ketone

R.T.: 6.989 min
 Delta R.T.: -0.003 min
 Response: 85560175
 Conc: 3.96 ng/ml



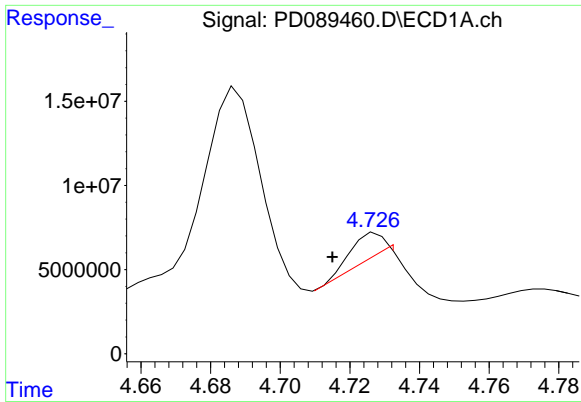
#22 Mirex

R.T.: 8.084 min
 Delta R.T.: -0.029 min
 Response: 7564461
 Conc: 2.49 ng/ml



#22 Mirex

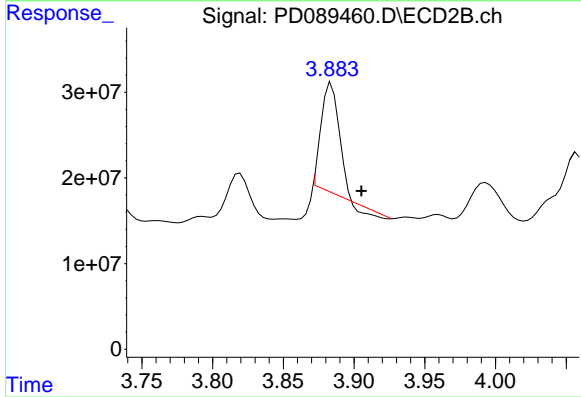
R.T.: 7.170 min
 Delta R.T.: -0.016 min
 Response: 204492459
 Conc: 12.26 ng/ml



#23 Chlordane-1

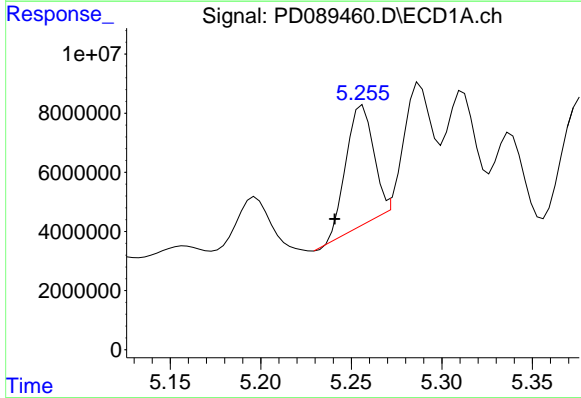
R.T.: 4.728 min
 Delta R.T.: 0.013 min
 Response: 9249753
 Conc: 43.22 ng/ml

Instrument :
 ECD_D
 ClientSampleId :



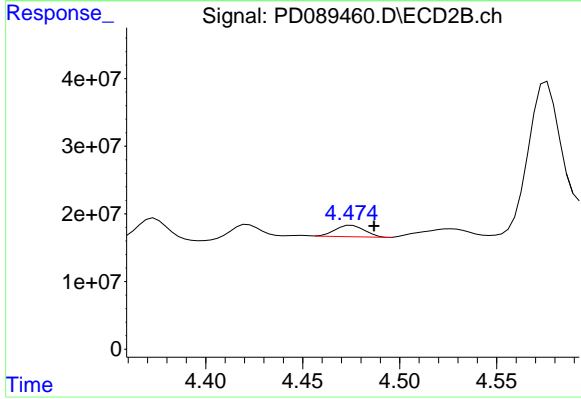
#23 Chlordane-1

R.T.: 3.884 min
 Delta R.T.: -0.021 min
 Response: 104832738
 Conc: 112.45 ng/ml



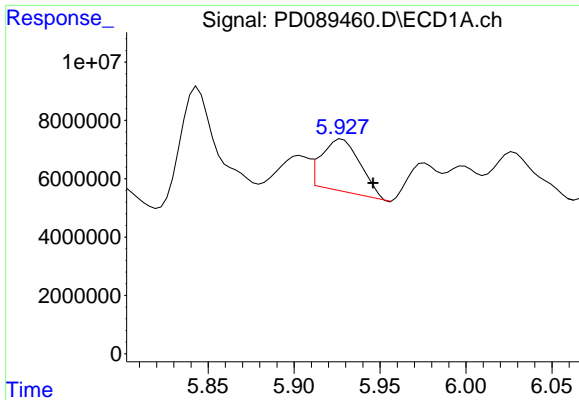
#24 Chlordane-2

R.T.: 5.256 min
 Delta R.T.: 0.015 min
 Response: 42097569
 Conc: 192.83 ng/ml



#24 Chlordane-2

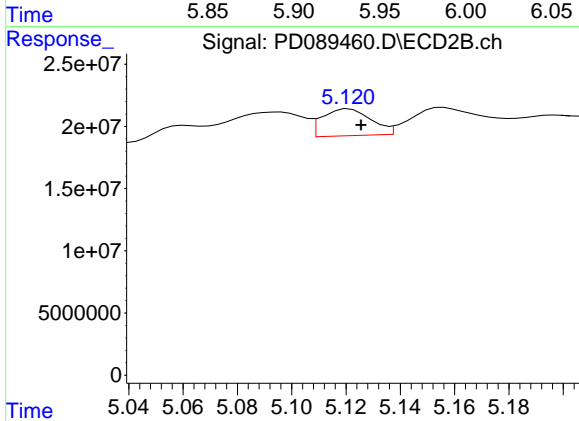
R.T.: 4.475 min
 Delta R.T.: -0.012 min
 Response: 18049667
 Conc: 18.97 ng/ml



#25 Chlordane-3

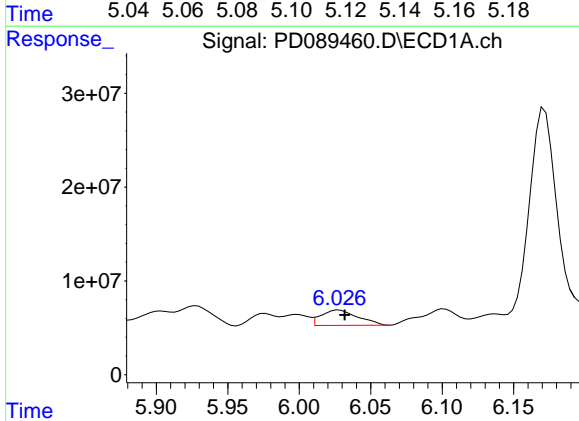
R.T.: 5.928 min
 Delta R.T.: -0.018 min
 Response: 27907718
 Conc: 32.36 ng/ml

Instrument :
 ECD_D
 ClientSampleId :



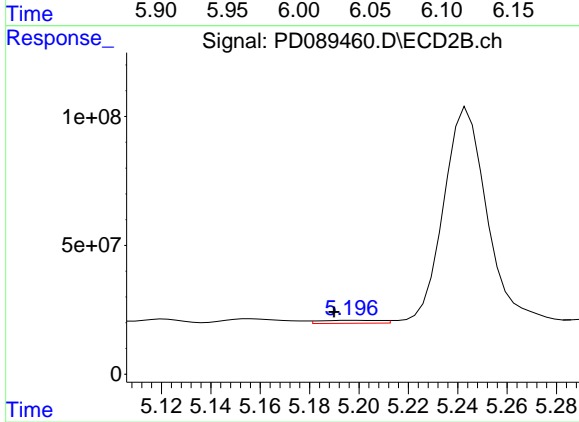
#25 Chlordane-3

R.T.: 5.121 min
 Delta R.T.: -0.004 min
 Response: 27051187
 Conc: 9.11 ng/ml



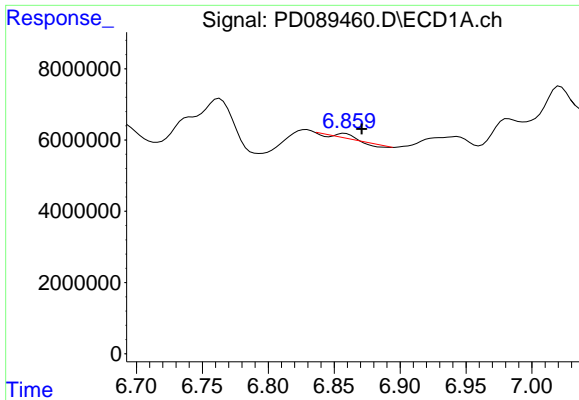
#26 Chlordane-4

R.T.: 6.028 min
 Delta R.T.: -0.004 min
 Response: 29443467
 Conc: 28.02 ng/ml



#26 Chlordane-4

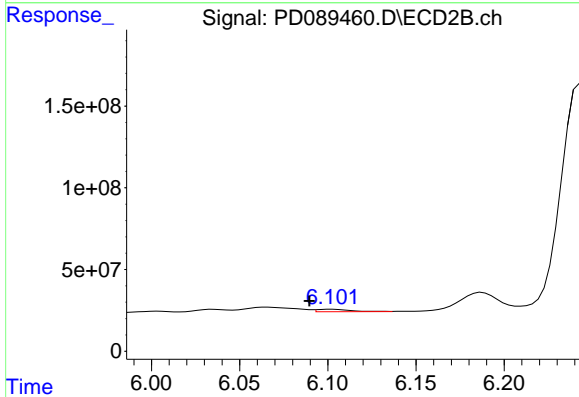
R.T.: 5.197 min
 Delta R.T.: 0.008 min
 Response: 20147290
 Conc: 8.04 ng/ml



#27 Chlordane-5

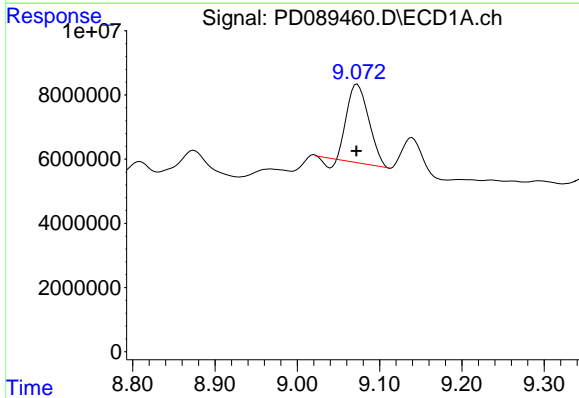
R.T.: 6.858 min
 Delta R.T.: -0.013 min
 Response: 208904
 Conc: 1.14 ng/ml

Instrument :
 ECD_D
 ClientSampleId :



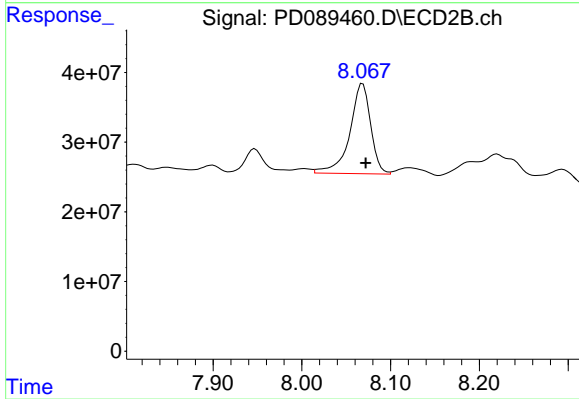
#27 Chlordane-5

R.T.: 6.103 min
 Delta R.T.: 0.013 min
 Response: 19386347
 Conc: 17.13 ng/ml



#28 Decachlorobiphenyl

R.T.: 9.073 min
 Delta R.T.: 0.001 min
 Response: 43613683
 Conc: 11.10 ng/ml



#28 Decachlorobiphenyl

R.T.: 8.069 min
 Delta R.T.: -0.004 min
 Response: 211717783
 Conc: 10.71 ng/ml